

Lots 401 - 410



Lot #401: ART GLASS ANGULAR JARDINIERE

The ivory exterior applied at the front with blue flowers and foliate branch, on amber faux bois supports, peach interior; 7 x 4 x 4 in.
Estimate: \$ 100.00 - \$ 200.00



Lot #402: RELIEF-DECORATED GLASS BOWL

With everted rim and relief molded with 9 fish, unmarked; 5 3/8 in. tall, 8 1/2 in. diam.
Estimate: \$ 200.00 - \$ 300.00



Lot #403: ENGRAVED OVERLAY GLASS OVOID VASE

The blue to white ground with blossoming branches; 8 3/4 in. tall, 6 1/4 in. diam.
Estimate: \$ 200.00 - \$ 400.00



Lot #404: FRENCH LARGE ENAMELED GLASS VASE

The fluted baluster-form bowl shading from vaseline to clear and enameled with lavender iris blooms and purple leaves and dragonflies at the neck; 20 x 7 in.
Estimate: \$ 300.00 - \$ 500.00



Lot #405: VAL ST. LAMBERT CAMEO CUT GLASS VASE

Incised, "Made in Belgium Val St. Lambert," the gourd-form bowl cut with poppy stems in lavender on satin ground; 8 1/2 in. tall, 5 in. diam.

Estimate: \$ 200.00 - \$ 300.00



Lot #406: THREE POMONA GLASS MATTE-GROUND ARTICLES

Comprising a tripod bowl with inverted rim, a vase with ruffled rim and applied scroll band and a tumbler with flower head band; 2 3/4 in. to 3 3/4 in. tall, 2 5/8 to 4 in. diam.

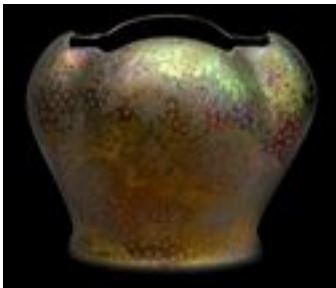
Estimate: \$ 200.00 - \$ 300.00



Lot #407: PISGAH POTTERY VASE

Marked in relief Pisgah Forest 1942, centering kneeling figure; the squat tapered bowl with floating blue crystals on yellow ground, mauve-glazed interior; 4 7/8 in. tall, 6 3/4 in. diam.

Estimate: \$ 100.00 - \$ 200.00



Lot #408: SIGNED WELLER IRIDESCENT METALLIC GLAZED POTTERY VASE

Of quatrefoil cross section, with 3-petal springs and dots on metallic ground, copper luster interior; 5 1/8 x 7 x 5 1/2 in.

Estimate: \$ 200.00 - \$ 300.00



Lot #409: CONTEMPORARY JAPANESE POTTERY VASE

Of angular tapered-form with tiered sword blade bands, signed; 11 3/4 x 4 3/4 in.

Estimate: \$ 100.00 - \$ 200.00

Lot #410: STEUBEN GLASS TABLE SERVICE

12-7 1/4 in. water goblets with knopped teardrop stem, 12-5 3/4 in. wine glasses, 12-5 in. champagne glasses, 11-8 1/2 in. plates and 12-4 1/2 in. beaker-form finger bowls together with original Steuben bags and fitted silvered paper boxes.

Estimate: \$ 1000.00 - \$ 1500.00



[To Top](#)



Lots 411 - 420



Lot #411: DRESDEN PORCELAIN SMALL BOTTLE VASE: SERENADE

With underglaze blue beehive and titled; full round with Venus reclining and Eros with mandolin, landscape on reverse; 4 in. tall.

Estimate: \$ 100.00 - \$ 200.00



Lot #412: DRESDEN PORCELAIN TRIPOD URN, LINER AND COVER

Marked Dresden in blue beneath a lamb, a beehive and 333 in iron red; decorated with Greek figures and Greek fret bands, the supports on gilt lion's paw feet and stepped base; 17 1/2 in. tall, 7 1/2 in. diam.

Estimate: \$ 800.00 - \$ 1200.00



Lot #413: VIENNA PORCELAIN MYTHOLOGICAL VASE: PARIS AND HELEN

With 3 figure groups on dotted gilt ground within cobalt bands, beehive mark and titled and inscribed "Bourges"; together with a Dresden scent bottle with gilt-metal hinged stopper and figure-decorated cup and saucer; 2 3/8 to 5 3/4 in. tall, 2 3/4 to 4 1/2 in. diam.

Estimate: \$ 200.00 - \$ 300.00



Lot #414: MEISSEN PORCELAIN FIGURE OF A PEACOCK

Standing with tail trailing behind, underglaze blue, crossed swords, impressed in script R172 x above 144; 3 1/2 x 7 1/4 in.

Estimate: \$ 100.00 - \$ 200.00



Lot #415: BROWN-GLAZED POTTERY COFFEE POT AND COVER
The ovoid bowl relief molded with stags and does, the cover with bird knop; 9 1/2 x 11 1/4 in.
Estimate: \$ 300.00 - \$ 400.00



Lot #416: LARGE STONEWARE OVOID URN
With ring bands and c-scroll handles; 29 3/4 x 18 1/2 in.
Estimate: \$ 300.00 - \$ 500.00



Lot #417: ENGLISH PEARLWARE PLATE
Centered by a stag on green spongeware ground, relief molded harp and flower border; 10 1/4 in. diam.
Estimate: \$ 100.00 - \$ 200.00



Lot #418: ENGLISH PORCELAIN PART TEA SERVICE IN THE JAPAN PATTERN
Comprising: 8-8 1/2 in. plates, 6-9 1/4 in. plates, 7 coffee cups, 9 tea cups, 10 saucers, 2 boat-form sugar bowls and covers and 1 creamer.
Estimate: \$ 500.00 - \$ 700.00



Lot #419: SET OF 26 SPODE NEW STONE CHINA DINNER PLATES, 24 SOUP PLATES AND 22 DESSERT PLATES
In the Japan pattern, impressed mark and numbered in iron red 3504; 8 to 9 1/2 in. diam.
Estimate: \$ 1200.00 - \$ 1800.00



Lot #420: PAIR OF SPODE NEW STONE CHINA SOUP TUREENS, COVERS AND STANDS, IN THE JAPAN PATTERN
Impressed mark and numbered in iron red 3504; the bowls with gilt raised handles, the dome covers with arch handles and the shallow boat-form stands with raised solid handles; 10 1/2 in. tall.
Estimate: \$ 1500.00 - \$ 2000.00

Lots 421 - 430



Lot #421: SET OF FOUR SPODE NEW STONE CHINA VEGETABLE DISHES AND COVERS, A FRUIT BOWL AND A PLATTER

In the japan pattern, impressed mark and numbered in iron red: the dishes with slightly concave sides, the covers with gilt arch handles, the bowl with notched corners and the platter of chamfered rectangular form. Estimate: \$ 1500.00 - \$ 2000.00



Lot #422: ROYAL CROWN DERBY RED AVES PATTERN PART DINNER SERVICE

Comprising 9-10 1/2 in. dinner plates, 12-8 1/2 in. lunch plates, 12-6 in. bread and butter plates, 5-5 1/4 in. dishes, 9 teacups and 8 saucers, 1 gravy boat and separate stand, 1 coffee pot, 1 teapot, 1 creamer and 1 covered sugar bowl.

Estimate: \$ 600.00 - \$ 800.00



Lot #423: MING-STYLE GLAZED POTTERY FIGURE

Wearing turquoise robe on hardwood stand, mounted as a lamp; 18 1/4 in. tall.

Estimate: \$ 800.00 - \$ 1200.00



Lot #424: MING-STYLE POTTERY FIGURE

18 in. tall, mounted on lampstand.

Estimate: \$ 800.00 - \$ 1200.00



Lot #425: PAIR OF FAMILLE VERTE PORCELAIN TABLE SCREENS ON WOOD FRAME

The one with a bird on prunus branch, the other with figures watching the training of a crane, pewter-inlaid frames and pierced stands; panels: 8 3/4 x 11 1/2 in., with stands: 13 x 12 3/8 in.

Estimate: \$ 600.00 - \$ 800.00



Lot #426: CHINESE BLUE AND WHITE PORCELAIN YEN YEN VASE

The baluster lower section with lobed floral panels beneath a beaker neck, 2 concentric ring underglaze blue mark; 17 1/4 in. tall.

Estimate: \$ 400.00 - \$ 600.00



Lot #427: FAMILLE NOIRE PORCELAIN VASE

Enameled with mythical bird amidst flowering branches, base drilled, hardwood stand; 18 1/2 in. tall.

Estimate: \$ 400.00 - \$ 600.00



Lot #428: FAMILLE VERTE PORCELAIN BALUSTER-FORM VASE

With bird, rockwork and chrysanthemum decoration, on Louis XV-style gilt-bronze base; to finial: 45 1/2 in. tall.

Estimate: \$ 600.00 - \$ 800.00



Lot #429: CHINESE CARVED HARDWOOD BENCH WITH DREAM STONE PANEL

The oxbow top rail above stone panel and cloud band arms, the concave-fronted seat on molded legs; 41 x 40 in.

Estimate: \$ 2000.00 - \$ 4000.00



Lot #430: SET OF TWELVE CHINESE PAINTED PAPER PANELS

Each with birds in flight, flowers and aquatic birds, giltwood frames; 8 ft. 21 1/4 in.

Estimate: \$ 2000.00 - \$ 3000.00

Lots 431 - 440



Lot #431: CHINESE CARVED HARDWOOD ALTAR TABLE

The long top above pierced cloud band frieze with bi discs, on paneled legs joined by lateral oxbow stretchers and ending in scroll feet; 33 x 6 ft. 4 in. x 19 in.

Estimate: \$ 3000.00 - \$ 5000.00



Lot #432: PAIR OF CHINESE CARVED ELM ARMCHAIRS

Each oxbow top rail above spoon-shaped splat relief-carved with figure and characters, plank seat on carved rails and brackets and rounded legs joined by box stretcher; 45 x 23 in.

Estimate: \$ 700.00 - \$ 1000.00



Lot #433: CHINESE EXPORT LACQUER ALTAR TABLE

The overhung top with central landscape panel and shaped floral reserves, above pierced frieze and supports joined by mushroom stretchers, gilt highlights; 33 x 4 ft. 2 in. x 17 in.

Estimate: \$ 800.00 - \$ 1200.00



Lot #434: CHINESE COROMANDEL SIX-FOLD PARTIAL SCREEN

The front incised with mythical birds within borders showing household implements and bird reserves, mounted with engraved brass hinges, the reverse with painted floral panels; probably part of a larger screen, 7 ft. 3 in. x 15 in. each panel.

Estimate: \$ 700.00 - \$ 900.00



Lot #435: CHINESE CARVED HARDWOOD ALTAR TABLE

The narrow rectangular top above pierced rails and brackets and angular legs ending in block feet; 41 1/4 x 5 ft. 8 3/4 in. x 13 3/4 in.

Estimate: \$ 700.00 - \$ 900.00



Lot #436: CHINESE BRASS-MOUNTED CARVED HARDWOOD TABLE CABINET

With graduated tray tiers and incorporating an arrangement of shelves, drawers and sliding doors, with bird and foliate panels; 29 1/2 x 33 1/4 x 13 1/2 in.

Estimate: \$ 400.00 - \$ 600.00



Lot #437: JAPANESE CLOISONNE ENAMEL SMALL VASE

Showing 2 roosters on a blue green ground, unsigned; 4 3/4 in. tall.

Estimate: \$ 200.00 - \$ 300.00



Lot #438: JAPANESE CLOISONNE ENAMEL JARDINIERE

With tan, orange and blue floral rondels spaced by lappets on mirror black field, iron red, tan and sky blue foliate bands; 8 3/4 in. tall, 12 1/2 in. diam.

Estimate: \$ 200.00 - \$ 300.00



Lot #439: JAPANESE CLOISONNE ENAMEL BOX

The hinged cover with oblong lobed blue panel enclosing butterflies, on chrysanthemum ground, the gilt-metal interior with incised butterflies and flowers; 2 5/8 x 4 3/4 in.

Estimate: \$ 100.00 - \$ 200.00

END OF AUCTION

[To Top](#)

