

Lots 501 - 510



Lot #501: GROUP OF FIVE SILVER TEA ARTICLES

Comprising a 4 3/4 in. spherical teapot and similar sugar bowl by Peter Guille, London, a 3 7/8 in. bowl by Peter Guille, New York and a pair of Ensko 3 1/2 in. bowls.

Estimate: \$ 400.00 - \$ 600.00

Lot #502: NO LOT



Lot #503: GROUP OF BOXED SILVER-PLATED SPOONS AND KNIVES TOGETHER WITH MISC. SILVER PLATE.

Estimate: \$ 75.00 - \$ 100.00



Lot #504: GROUP OF SILVER AND SILVER-PLATED ARTICLES

Estimate: \$ 150.00 - \$ 250.00



Lot #505: ENGLISH SILVER-PLATED TWO-HANDLED TEA TRAY AND TWO OTHERS

Retailed by Bailey, Banks and Biddle, with engraved surface and shell-cast border, the other two with inscriptions.

Estimate: \$ 100.00 - \$ 200.00



Lot #506: PAIR OF SHEFFIELD PLATE VEGETABLE DISHES AND COVERS ON WARMING STANDS

Each with gadroon edges, the flat dome covers with twist-off loop handle, the stands with turned handles, bun feet.

Estimate: \$ 300.00 - \$ 500.00



Lot #507: PAIR OF ENGLISH SILVER-PLATED TABLE CANDLESTICKS

Each column stem with everted egg-and-dart rim, conforming base; 8 1/2 in. tall.

Estimate: \$ 250.00 - \$ 350.00



Lot #508: VICTORIAN SILVER-PLATED KETTLE ON WARMING STAND
Elkington & Co., Birmingham: the octafoil bowl with swing handle, fluted s-scroll spout, the stand on s-scroll legs ending in shell feet.
Estimate: \$ 300.00 - \$ 500.00



Lot #509: ENGLISH SILVER-PLATED BISCUIT BARREL
The pierced and relief-molded cylindrical panel with handles and blue glass liner.
Estimate: \$ 200.00 - \$ 400.00

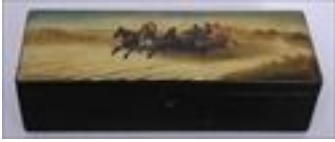


Lot #510: RUSSIAN LACQUER EGG-FORM LIDDED BOX
The one side painted with Christ Resurrected, the other a city plaza with tower and onion domes, inscribed on gilt interior; 4 x 6 1/2 x 4 1/8 in.
Estimate: \$ 300.00 - \$ 500.00

[To Top](#)



Lots 511 - 520



Lot #511: RUSSIAN LACQUER RECTANGULAR BOX

The hinged top with Troika, carrying driver and a peasant couple, thatched cottages to rear, medallion mark on inside of lid; 3 1/4 x 11 1/4 x 4 in.

Estimate: \$ 300.00 - \$ 400.00



Lot #512: RUSSIAN HAND-PAINTED PORCELAIN PLATE

Centered by a child with hands on hips, beneath an inscription and signed; 9 5/8 in. diam.

Estimate: \$ 400.00 - \$ 600.00



Lot #513: TWO RUSSIAN SILVER-GILT AND NIELLO SNUFF BOXES AND A SCANDANAVIAN CUP

Marks for Moscow, 1842 and 1845: the larger with scrollwork surface within Greek fret borders, the other black-ground flat surface with flowerheads within quatrefoils or crescents, the cup engraved AIS, ASD, 1687.

Estimate: \$ 250.00 - \$ 450.00



Lot #514: GROUP OF FOUR CONTINENTAL SNUFF BOXES

Comprising a Russian enamel and silver gilt cushion-form box, an 800 silver box with enamel panel of reclining female, an octagonal 800 silver gilt and enamel box and a turquoise-mounted gilt-metal box with portrait rondel.

Estimate: \$ 200.00 - \$ 400.00



Lot #515: RUSSIAN CHAMPLEVE AND SILVER GILT CIRCULAR BOX AND COVER

Marks for Faberge, K. Armfeld; 3 3/4 in. diam.

Estimate: \$ 800.00 - \$ 1200.00



Lot #516: SET OF TWELVE RUSSIAN CHAMPLEVE SILVER GILT COFFEE SPOONS

With spiral twist spindle handle, floral and foliate underside.

Estimate: \$ 300.00 - \$ 500.00



Lot #517: RUSSIAN CHAMPLEVE ENAMEL SILVER GILT MINIATURE KOVSH

With pearlwork lip and overlapping scrollwork.
Estimate: \$ 300.00 - \$ 500.00



Lot #518: SET OF TEN RUSSIAN CHAMPLEVE ENAMEL AND PARCEL GILT TEA SPOONS

Marked Klingert, with turquoise-ground spindle handles, under bowl with pearlwork and scrollwork; 4 3/8 in. long.
Estimate: \$ 200.00 - \$ 400.00



Lot #519: PAIR OF RUSSIAN CHAMPLEVE ENAMEL AND PARCEL GILT SERVING SPOONS

With spiral twist spindle handles, underside of bowls with pearl work enclosing vine fret work; 7 3/4 in. long.
Estimate: \$ 200.00 - \$ 400.00



Lot #520: THREE RUSSIAN ENAMEL AND PARCEL GILT CUPS

Together with a tea cup.
Estimate: \$ 200.00 - \$ 300.00

[To Top](#)



Lots 521 - 530



Lot #521: CONTINENTAL CHAMPLEVE ENAMEL AND PARCEL GILT TEA STRAINER

Marks 925, S and another mark; the everted rim with flowerheads and anthemia.

Estimate: \$ 200.00 - \$ 300.00



Lot #522: RUSSIAN BRONZE FIGURE OF A RIFLEMAN

The supine figure with backsack and head resting on raised fists, rifle to one side, lapis lazuli specimen base, unmarked.

Estimate: \$ 300.00 - \$ 500.00



Lot #523: RUSSIAN BRONZE TROIKA GROUP

Impressed signature in Cyrillic for L. Gratchev; modeled as a three-horse drawn sled with driver and a couple, malachite base.

Estimate: \$ 600.00 - \$ 800.00



Lot #524: EUROPEAN SCHOOL: FAREWELL KISS

Bronze molded in two parts with mounted soldier in a farewell embrace, with foundry mark for C. F. Woerffel, St. Petersburg and with signature in Cyrillic for L. Gratchev.

Estimate: \$ 1400.00 - \$ 1600.00



Lot #525: RUSSIAN BRONZE EQUESTRIAN GROUP

The rider and horse descending rocky incline, impressed signature in Cyrillic and with foundry mark for C. F. Woerffel, three separate pieces; 10 x 8 1/4 in.

Estimate: \$ 300.00 - \$ 500.00



Lot #526: AFTER F. PAUTROT, BIRD ON BRANCH

Copper patinated metal on gilt-bronze base, impressed signature, together with a patinated metal figure of a dead bird, and a metal group of fighting birds.

Estimate: \$ 300.00 - \$ 400.00



Lot #527: FAUSTA MENGARINI (1893-1952), BUST OF A BABY

Bronze, incised signature and inscribed Roma 1930, black striated marble base, 11 3/4 in. tall (inc. base).

Estimate: \$ 1200.00 - \$ 1800.00



Lot #528: AFTER LAVERGNE, PECHEUR

Modeled as a bare foot boy with straw hat adjusting fishing rod, impressed signature and brass plaque; 21 1/2 in. tall.

Estimate: \$ 400.00 - \$ 600.00



Lot #529: ITALIAN CARVED MARBLE FIGURE GROUP, AFTER THE ANTIQUE

Carved as two nude wrestlers, oval base; 17 x 20 x 12 in.

Estimate: \$ 400.00 - \$ 600.00



Lot #530: AFTER ISADORE-JULES BONHEUR (1827-1901), BULL

Gilt bronze figure, oval base with impressed signature, I. Bonheur; 5 x 6 3/4 in.

Estimate: \$ 300.00 - \$ 500.00

[To Top](#)



Lots 531 - 540



Lot #531: AFTER FERVILLE-SUAN, "LE FRISE HOLLANDAISE"

Bronze sledding group, impressed signature, alabaster and red and black marble base; 24 1/2 x 25 in. Provenance: According to the consignor, this bronze is from the estate of Jimmy Donohue and was exhibited at the Chicago World's Fair.

Estimate: \$ 700.00 - \$ 900.00



Lot #532: MACHAULT: DANCER WITH TRIANGLE

Bronze patinated metal on black marble base.

Estimate: \$ 200.00 - \$ 300.00



Lot #533: AFTER J. GREGOIRE, SEATED NYMPH WITH LYRE

Bronze, on black marble base, traces of gilding; 22 x 13 in.

Estimate: \$ 700.00 - \$ 1000.00



Lot #534: E. DROUOT: "ROSEE"

Gilt bronze figure carrying two water urns, impressed signature, plaque-applied base.

Estimate: \$ 600.00 - \$ 800.00



Lot #535: E. ALLAND: "DIANA"

Bronze, modeled as a drapery hung nude blowing a horn, holding another in her left hand, red and black marble stepped base, impressed signature.

Estimate: \$ 400.00 - \$ 600.00



Lot #536: CARVED STONE FIGURE OF A DRAPED NUDE

Inscribed: A. Frilli, Firenze; 23 in. tall.

Estimate: \$ 300.00 - \$ 500.00



Lot #537: E. FIASCHI: CARVED MARBLE BUST OF A YOUNG WOMAN

Parted hair with fillet, down-cast eyes gazing to right, rim of bodice seen at left shoulder, incised signature, marble base.

Estimate: \$ 700.00 - \$ 900.00



Lot #538: SWISS 10 3/4 IN. BRASS CYLINDER MUSIC BOX IN INLAID BURL WALNUT CASE

Playing ten airs, with menu card, organ unit, crank, stop/play and change/repeat levers, the case with gilt-metal drop handles, 12 1/2 x 23 in.

Estimate: \$ 1500.00 - \$ 2000.00



Lot #539: REGINA MAHOGANY 16 IN. DISC MUSIC BOX

With 1896 label: the flattened dome top with beaded band, the case with crank and petal tip lower edge, together with mahogany stand enclosed by a door, on shaped legs, together with 20 16 in. discs; 46 x 22 1/2 x 20 1/4 in.

Estimate: \$ 2000.00 - \$ 3000.00



Lot #540: SWISS 3 1/2 IN. SILVERED METAL CYLINDER MUSIC BOX IN DECAL-MOUNTED GRAINED CASE

With crank and stop/start and change/repeat levers, 5 x 14 3/4 in.

Estimate: \$ 150.00 - \$ 250.00

[To Top](#)



Lots 541 - 550



Lot #541: SWISS 8 3/4 IN. SILVERED METAL CYLINDER MUSIC BOX IN MARQUETRY-INLAID AND WALNUT CASE WITH DECAL DECORATION

With Jacot's Safety Check and the other 1884-1887 patents, stop/play lever and change/repeat dial, 8 x 24 1/4 in.

Estimate: \$ 400.00 - \$ 600.00



Lot #542: REGINA 12 1/4 IN. DISC OAK MUSIC BOX

With multiple patents from 1889-1897, with crank-activated movement, together with 48 disks.

Estimate: \$ 700.00 - \$ 900.00



Lot #543: SWISS 11 IN. BRASS CYLINDER MUSIC BOX IN MARQUETRY-INLAID ROSEWOOD AND WALNUT CASE

Playing six airs with menu card, the left hinged side opening to reveal three levers, 5 1/2 x 19 1/4 in.

Estimate: \$ 250.00 - \$ 450.00



Lot #544: SWISS 13 IN. BRASS CYLINDER MUSIC BOX IN MARQUETRY-INLAID ROSEWOOD CASE

The lid with music trophy opening to a six-bell movement playing 10 airs, with menu card, crank and two levers, 10 x 23 1/4 in.

Estimate: \$ 1200.00 - \$ 1800.00



Lot #545: TWO 9 IN. SILVERED METAL CYLINDERS FITTED INTO AN OAK BOX

Together with "Ideal Music Box" menu cards, box 17 in. long.

Estimate: \$ 100.00 - \$ 200.00



Lot #546: SWISS 13 IN. BRASS CYLINDER MUSIC BOX IN MARQUETRY-INLAID ROSEWOOD AND GRAINED CASE

The hinged top opening to glass panel and a hinged drop left side revealing three levers, 5 1/4 x 20 1/2 in.

Estimate: \$ 400.00 - \$ 600.00



Lot #547: SWISS 13 IN. SILVERED METAL MUSIC BOX IN MARQUETRY-INLAID ROSEWOOD AND GRAINED CASE

The top with music trophy opening to a movement with Jacot's Safety Check, 1886 patent and playing 10 airs with menu, tune, play/repeat and change time at will dials, 8 x 27 3/4 in.

Estimate: \$ 1000.00 - \$ 1500.00



Lot #548: REGINA 15 1/2 IN. DISC MAHOGANY MUSIC BOX ON MATCHING STAND

The hinged lid with print with 1876 patent, the case with crank handle and leaf banding, the stand with pull-out lateral slides and a door opening to vertical dividers together with approx. 84 discs, serial #35518, 41 x 24 in.
Estimate: \$ 2000.00 - \$ 3000.00



Lot #549: AFTER MENZEL, CONVIVIAL MEAL

Photomechanical print in colors, 35 1/2 x 29 1/2 in. (sight), signed and inscribed in the plate lower left.
Estimate: \$ 50.00 - \$ 75.00



Lot #550: GROUP OF SEVEN GLASS FIGURES

Comprising a Steuben eagle on sphere, a Steuben frog, two Lalique frogs, two Lalique eagle heads, car mascots and a Lalique bull; heights: 3 to 6 in.
Estimate: \$ 300.00 - \$ 500.00

[To Top](#)



Lots 551 - 556



Lot #551: WALNUT FOLDING BOOKREST

14 1/2 x 13 in.

Estimate: \$ 250.00 - \$ 350.00



Lot #552: PAIR OF CHIPPENDALE-STYLE WALL SHELVES

Estimate: \$ 200.00 - \$ 400.00



Lot #553: CHIPPENDALE-STYLE MAHOGANY TILT-TOP TEA TABLE

The piecrust top on bird cage support, above a pear-form pedestal and tripod snake feet, 28 3/4 in. tall, 20 1/2 in. diam.

Estimate: \$ 500.00 - \$ 700.00



Lot #554: CHIPPENDALE-STYLE PINE MIRROR

Early 20th c.; repaired.

Estimate: \$ 300.00 - \$ 500.00



Lot #555: ROCOCO REVIVAL CARVED AND MARQUETRY-INLAID WALNUT SIDE CHAIR

The pierced back with mountain goat oval, the seat with running doe rondel, cabriole legs.

Estimate: \$ 100.00 - \$ 200.00



Lot #556: ROCOCO-STYLE GILT-METAL-MOUNTED MARQUETRY-INLAID OCCASIONAL TABLE

The serpentine bead-rimmed top with bow-knotted floral sprays, mother-of-pearl dots, on cabriole legs, 29 in. tall, 29 in. diam.

Estimate: \$ 300.00 - \$ 400.00

END OF AUCTION

To Top

