

# Lots 1 – 100



## **Lot #1: NORTHWEST PERSIAN RUNNER**

The dark blue field with octagons & squares spaced by serrated leaves; primary barber pole border & 2 guard borders; together with a wine red ground mat. 45 in. x 10 ft. 6 1/2 in. & 23 1/2 in. x 34 1/2 in. From St. Mary's Convent, Peekskill, N.Y.  
Estimate: \$700 - \$900



## **Lot #2: ORIENTAL RUNNER**

The rose field with flower head & trellis overlay within primary cobalt flower head border & 4 guard borders. Approx. 10 ft. 2 1/2 in. x 30 1/2 in.  
Estimate: \$300 - \$500



## **Lot #3: NORTHWEST PERSIAN RUNNER**

The saffron field with lattice overlay enclosing flower heads, primary serrated leaf border & two guard borders; 10 ft. 3 in. x 41 in. From St. Mary's Convent, Peekskill, N.Y.  
Estimate: \$600 - \$800

## **Lot #4: NO LOT**



## **Lot #5: TURKISH MERCERIZED COTTON PRAYER RUG**

The oatmeal ground with mihrab & mosque lamp, within salmon flowerhead border & 6 guard borders; approx. 64 1/2 in. x 44 in.  
Estimate: \$200 - \$300

## **Lot #6: NO LOT**



## **Lot #7: TURKISH CARPET**

The dusty rose field with stylized floral lattice overlay within primary cream border & 2 guard borders. Approx. 8 ft. 3 in. x 6 ft. 1 in.  
Estimate: \$400 - \$600



**Lot #8: HERIZ CARPET**

The wine red & cobalt medallion anchored to a wine red field within stepped ivory spandrels, within cobalt meander border & 2 guard borders. Approx. 9 ft. 2 in. x 7 ft. 3 1/4 in.

Estimate: \$600 - \$800



**Lot #9: PERSIAN CARPET**

The oblong latched hexagonal sky blue medallion on cobalt field within stepped rust field & multiple borders. Approx. 10 ft. 2 in. x 7 ft. 10 in.

Estimate: \$600 - \$800

**Lot #10: NO LOT**



**Lot #11: CHINESE WOOL WORK CARPET**

The oatmeal ground with floating rondels & brackets within Greek fret, saw tooth & floral meander borders; approx. 11 ft. 7 1/2 in. x 8 ft. 9 in.

Estimate: \$500 - \$700



**Lot #12: CHINESE WOOL WORK CARPET**

The oatmeal field with floating rondels & corner brackets within saw tooth, fret & meander borders; approx. 11 ft. 10 1/2 in. x 8 ft. 10 in.

Estimate: \$500 - \$700



**Lot #13: CARPET**

The brick hexagonal medallion anchored to a cobalt herati field within bird spandrels, primary border & 4 guard borders. Approx. 13 ft. x 9 ft.

Estimate: \$400 - \$600



**Lot #14: PERSIAN CARPET**

The rose field with mosque lamps within ivory primary border & multiple guard borders; Approx. 14 ft. 8 in. x 14 ft. 6 in.

Estimate: \$800 - \$1,200



**Lot #15: PERSIAN CARPET**

The sky blue medallion anchored to an indigo vine work ground with ivory spandrels, within primary indigo border & 4 guard borders. 16 ft. 1 3/4 in. x 9 ft. 6 1/2 in.

Estimate: \$700 - \$900



**Lot #16: SAROUK CARPET**

The wine red field worked with flower field urns & floral branches, within primary midnight blue border & six guard borders. Approx. 19 ft. x 11 ft.

Estimate: \$3,000 - \$5,000



**Lot #17: AMERICAN PIECED COTTON QUILT**

Worked with an oval wreath of interlaced flower branches, within tasseled swag surrounded in salmon, green & yellow; approx. 7 ft. 2 1/2 in. x 5 ft. 5 in.

Estimate: \$200 - \$400



**Lot #18: AMERICAN SILKWORK MOURNING PICTURE**

A maiden & willow tree flanking a memorial inscribed: "In Memory of 3 infants, children of Mr. Benjamin & Mrs. Deborah Cooker (?)... Inscribed to the memory of departed innocence by a bereaved sister."  
Estimate: \$200 - \$400



**Lot #19: AMERICAN SILKWORK MOURNING PICTURE**

Worked as a church yard with willow tree flanking a weeping maiden beside a monument with urn inscribed "Memento Mori" above, "To the Memory of Capt. Thos. Chandler, who was lost at sea, January 1825. Aged 55 years. Capt. James Peterson who died January 22nd 1825 aged 34 years. John J. Peterson, died May 8th, 1825. Aged 18 months." The black oval mat inscribed in gold, "Wrought by Matilda Chandler of Duxbury, AE: 13, 1814."  
Dimensions: 20 ½ x 16 ½ (image, sight) Frame : 25 x 20 ¼ in  
Estimate: \$800 - \$1,200



**Lot #20: SILKWORK PICTURE WITH GOLD METALLIC THREAD & PAINTED SILK PANEL**

Centered by a view of Washington crossing the Delaware after Leutze, set onto crossed flags beneath the eagle of the Republic, the base with cannon balls, anchor crossed cannons & "E Pluribus Unum" on black silk ground; 43 in. x 27 1/2 in.  
Estimate: \$800 - \$1,200



**Lot #21: PENNSYLVANIA CHIPPENDALE MAHOGANY CHEST-OF-DRAWERS**

Containing 2 short & 3 long cock beaded drawers fitted with brass drop handles raised on ogee bracket feet; 37 1/2 in. x 37 1/4 in. x 18 1/2 in.

Estimate: \$1,500 - \$2,500



**Lot #22: AMERICAN CHIPPENDALE STYLE-CARVED MAHOGANY SIDE CHAIR**

With shell carved top rail, pierced baluster splat, drop-in seat, gadroon rails, cabriole legs & claw & ball feet.

Estimate: \$300 - \$500



**Lot #23: NEW ENGLAND MAHOGANY PIER MIRROR WITH EGLOMISE PANEL**

With triple cluster 1/2 round pilasters, the panel with gilt metal floral stems on sky blue diamond reserve & ivory ground; 37 in. x 18 1/2 in.

Estimate: \$400 - \$600



**Lot #24: SET OF FOUR NEW YORK GOTHIC REVIVAL MAHOGANY SIDE CHAIRS**

Each top rail pierced with trefoils above open work pointed arch back, the seat on sabre legs. For a similar chair see "The Gothic Revival Style in America, 1830-1870," plates 2 & 3.

Estimate: \$1,000 - \$1,500



**Lot #25: FEDERAL-STYLE MAHOGANY POLE SCREEN WITH OVAL FLORAL SILKWORK PANEL**

With two rectangular leaves, straight frieze, on round tapered legs ending in pad feet. Height: 28 1/2 in., width with leaves raised: 46 1/4 in.

Estimate: \$200 - \$300



**Lot #26: PHILADELPHIA CHIPPENDALE-STYLE CARVED MAHOGANY BLOCK FRONT LOW BOY**

The drawers carved with shells & acanthus leaves; 1/4 reeded pilasters, on cabriole legs ending in claw & ball feet; 29 1/4 in. x 33 in. x 21 1/4 in.

Estimate: \$600 - \$800



**Lot #27: CARVED MAHOGANY CORNER CHAIR**

The horseshoe top rail above pierced beaker splats, the seat on turned legs joined by an X-stretcher.

Estimate: \$200 - \$400



**Lot #28: NEW ENGLAND FEDERAL MAHOGANY SETTEE WITH BIRD'S EYE MAPLE PANELS**

With low back, free-standing reeded arm supports & the seat on swelling reeded legs surmounted by bird's eye panels; 78 in. long.

Estimate: \$3,000 - \$5,000



**Lot #29: FEDERAL CHERRY CHEST-OF-DRAWERS**

The rectangular top above 4 drawers with incised stringing fitted with brass oval drop handles, on bracket feet; 37 1/2 in. x 44 1/4 in. x 20 in.

Estimate: \$1,000 - \$1,500



**Lot #30: LATE FEDERAL CARVED MAHOGANY BEDSIDE TABLE**

The square top above 2 drawers & raised on spiral leaf-carved legs. 28 in. x 18 1/4 in. x 17 in.

Estimate: \$150 - \$250

**Lot #31: NO LOT**



**Lot #32: EDWARDIAN MARQUETRY INLAID MAHOGANY VITRINE CABINET WITH LABEL OF GEORGE C. FLINT CO. N.Y., N.Y.**

The vine work inlaid frieze above a central glass door flanked by diamond lattice glazed panels opening to a mirror backed interior; slightly splayed legs joined by a shelf; 55 3/4 in. x 37 3/4 in. x 13 in. From St. Mary's Convent, Peekskill, NY.

Estimate: \$400 - \$600



**Lot #33: RENAISSANCE REVIVAL WALNUT EXTENSION DINING TABLE**

With round ends, on block pedestal with applied burl panels & rondels & 4 down swept legs, with 8 extra leaves in a fitted box; 26 in. x 48 in. x 216 in. From St. Mary's Convent, Peekskill, NY.

Estimate: \$700 - \$900



**Lot #34: AMERICAN CLASSICAL MAHOGANY & MAHOGANY VENEERED SIDE TABLE**

With shaped flame veneered drawer. 28 in. x 22 1/4 in. x 15 3/4 in.

Estimate: \$75 - \$125



**Lot #35: FEDERAL INLAID MAHOGANY CARD TABLE**

The folding top with checkered edge, plain playing surface, above central panel on square tapered legs; 30 1/4 in. x 36 in. x 17 1/4 in.

Estimate: \$1,000 - \$1,500



**Lot #36: FEDERAL MAHOGANY PEMBROKE TABLE**

With 2 D-shaped leaves, frieze drawer & molded legs ending in casters; 27 1/2 in. x 18 1/2 in. x 35 1/2 in.

Estimate: \$1,000 - \$1,500





**Lot #37: LATE FEDERAL DOUBLE GATE-LEG TABLE**

With two deep rectangular leaves, raised on partially ring turned legs; 29 in. x 41 3/4 in. x 19 3/4 in.

Estimate: \$700 - \$900



**Lot #38: AMERICAN ROCOCO REVIVAL ROSEWOOD SIDE TABLE**

The serpentine top above a drawer, spiral twist legs & a shelf; 29 1/4 in. x 22 in. x 13 3/4 in.

Estimate: \$200 - \$400



**Lot #39: FEDERAL INLAID MAHOGANY SERPENTINE FRONTED SIDEBOARD**

Containing 3 cock beaded frieze drawers above an arrangement of 2 bottle drawers & 4 doors spaced by pendant bellflowers. 40 1/2 in. x 5 Ft. 6 in. x 25 in.

Estimate: \$3,000 - \$4,000



**Lot #40: RENAISSANCE-STYLE CARVED OAK HALL ARMCHAIR**

From St. Mary's Convent, Peekskill, NY.

Estimate: \$400 - \$600



**Lot #41: PAIR OF AMERICAN CLASSICAL MAHOGANY SIDE CHAIRS**

Each with solid urn splat, bow-fronted drop-in seat & sabre legs.

Estimate: \$300 - \$500



**Lot #42: AMERICAN RENAISSANCE REVIVAL WALNUT STEP-BACK BOOKCASE**

The flat top above a pair of glass doors, the base containing two drawers with drop handles. 82 1/4 in. x 43 1/2 in. x 17 1/4 in.

Estimate: \$500 - \$700



**Lot #43: RENAISSANCE REVIVAL STAINED OAK & WALNUT VENEERED BOOKCASE**

Enclosed by a pair of arched glazed doors flanked by guilloche carved corbels & vertical walnut raised panels, the base containing 2 drawers; 57 in. x 54 1/4 in. x 15 1/4 in. From St. Mary's Convent, Peekskill, NY.

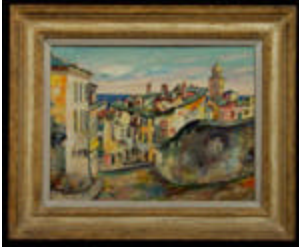
Estimate: \$500 - \$700



**Lot #44: MAX BAND (1900 - 1974) TOWNSCAPE WITH CHURCH**

Oil on canvas, 24 in. x 19 3/4 in. signed lower left "Max Band."

Estimate: \$600 - \$800



**Lot #45: ELISEE MACLET (1881 - 1962) VILLAGE NEAR CLIFF**

Oil on canvas, 19 3/4 in. x 25 3/4 in., signed lower right "Maclet," & identified on a partial label on the stretcher as "No. 1223/Artist Maclet/Vielle Rue a Bastia, Corse."

Estimate: \$2,000 - \$4,000



**Lot #46: EUGENE GALIEN-LALOUÉ (1854 - 1941) CITY STREETS**

Oil on canvas, 15 in. x 18 in., signed lower left "E. Galien Laloue".

Estimate: \$2,000 - \$3,000



**Lot #47: ELISEE MACLET (1881 - 1962) CORSICAN PORT**

Oil on canvas, 19 3/4 in. x 28 3/4 in., signed lower left "Maclet" & identified on an old gallery label on the stretcher as "#547/Maclet/Bord de mer a Roskoff."

Estimate: \$3,000 - \$5,000



**Lot #48: MARIA V.K. LISZT (1902 - 1992) CAPE ANN BOATS**

Oil on artist-board, 20 in. x 15 3/4 in., signed lower right "M. Liszt."

Estimate: \$500 - \$700



**Lot #49: CHARLES D. CAHOON (1861 - 1951) BOY & DOG ON CAPE COD VILLAGE ROAD**

Oil on board, 13 3/4 in. x 10 1/2 in. signed lower right, C.D. Cahoon.

Estimate: \$800 - \$1,200



**Lot #50: RIVER SCENE WITH MOORED ROW BOAT**

Pastel, 13 1/2 in. x 23 1/2 in. (sight), signed lower left S. Weis (?).

Estimate: \$200 - \$400



**Lot #51: JULES DUPRE (1811 - 1889) THE DRINKING POOL**

Oil on canvas, 25 7/8 in. x 32 1/8 in., signed "Jules Dupre," with an old gallery label on verso.

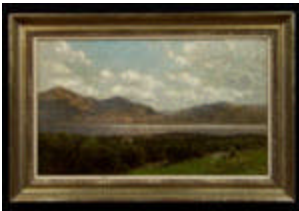
Estimate: \$7,000 - \$9,000



**Lot #52: COW & SHEEP**

Pencil sketch with highlighting, 6 in. x 9 5/8 in; signed lower right "Charles G. Morgan."

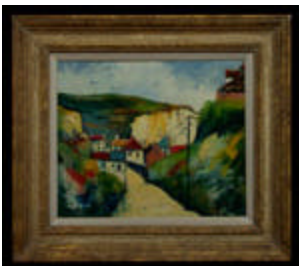
Estimate: \$150 - \$250



**Lot #53: JOHN BUNYAN BRISTOL (1826 - 1909) LANDSCAPE WITH FIGURE**

Oil on canvas, 18 in. x 30 in. signed lower left "J.B. Bristol."

Estimate: \$500 - \$700



**Lot #54: ELISEE MACLET (1881 - 1962) LANDSCAPE NEAR ROSCOFI**

Oil on artist-board, 18 in. x 21 1/2 in, signed lower left "Maclet."

Estimate: \$2,000 - \$4,000



**Lot #55: MOUNTAIN FARM**

Oil on canvas, 32 in. x 50 in., signed & dated lower left "F. Rosenthal/31."

Estimate: \$200 - \$400



**Lot #56: COUNTRY ROAD**

Oil on canvas, 12 7/8 in. x 18 7/8 in.

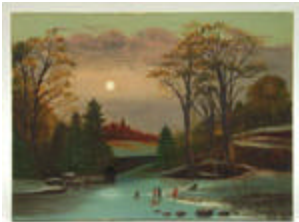
Estimate: \$175 - \$225



**Lot #57: HARBOR SCENE**

Oil on wooden panel, 17 1/2 in. x 24 in.

Estimate: \$200 - \$300



**Lot #58: ICE FISHING & SKATING PARTY ON A MOONLIT NIGHT**

Oil on canvas, 17 in. x 23 in., the reverse with the name Oscar Ball.

Estimate: \$400 - \$600



**Lot #59: LOUIS C. MALBRANCHE (1790 - 1838) PAIR OF WINTER SCENES**

Oil on artist-board; both signed faintly lower right

"Malbranche," approx. 9 in. x 11 3/16 in.

Estimate: \$2,500 - \$3,500



**Lot #60: THE MEETING**

English School, oil on canvas, 14 in. x 12 in. in a gilt frame.  
Estimate: \$300 - \$500



**Lot #61: PORTRAIT OF A LADY IN PINK**

Oil on canvas, 16 1/4 in. x 13 in., signed & dated lower left  
"Carl Gutherz/Paris 1893." From St. Mary's Convent,  
Peekskill, N.Y.  
Height: 17 3/4 in.  
Estimate: \$400 - \$600



**Lot #62: CHARLES CHAPLIN (1825 - 1891) NUDE WOMAN WITH CHERUBS**

Red chalk on paper, 17 7/8 in. x 12 3/8 in. signed & dated  
lower left, "Ch. Chaplin/ 1869."  
Estimate: \$100 - \$200



**Lot #63: TWO PICTURES OF NATIVE AMERICANS**

One a sepia-toned photogravure of "Tewa Girls" after a  
photograph by Curtis; the other a black & white photograph.  
Larger: 22 7/8 in. x 26 13/16 in. From the Estate of  
Frederick W. Hughes.  
Estimate: \$100 - \$200



**Lot #64: EDWIN W. DEMING (1860 - 1942) TRIBAL MEETING**

Oil sketch on artist-board, 16 in. x 20 in., signed lower right "E.W. Deming."

Estimate: \$1,500 - \$1,800



**Lot #65: PORTRAIT ON BIRCH BARK**

In a birch bark frame, 24 3/4 in. x 19 1/4 in. From the Estate of Frederick W. Hughes.

Estimate: \$300 - \$500



**Lot #66: AFTER GEORGE CATLIN (1794 - 1872) "BUFFALO HUNT, CHASING BACK"**

Hand-colored lithograph from Catlin's North American Indian Collection.

12 inches x 17 5/8 inches (image)

From the Estate of Frederick W. Hughes

Estimate: \$800 - \$1,200



**Lot #67: TWO SOUTHWEST INDIAN VESSELS**

Comprising a spherical pot with wave & saw-tooth bands in cream, ivory & black & a small black & white decorated pot.

Heights: 3 in. & 8 1/2 in., Diameters: 4 1/2 in. to 11 in.

From St. Mary's Convent, Peekskill, New York.

Estimate: \$250 - \$350



**Lot #68: THREE SOUTHWEST INDIAN POTTERY BOWLS & A SHALLOW DISH**

With stylized feather decoration. Heights: 2 1/2 in. to 4 in.,

Diameters: 9 in. to 11 in. From St. Mary's Convent, Peekskill, New York.

Estimate: \$400 - \$600



**Lot #69: FOUR SOUTHWEST INDIAN POTTERY VESSELS**  
Comprising a large squat spherical storage jar with feathered shoulder & 3 small jars.  
Heights: 2 1/2 in. to 8 in., Diameters: 3 1/2 in. to 14 in.  
From St. Mary's Convent, Peekskill, N.Y.  
Estimate: \$400 - \$600



**Lot #70: ROOKWOOD FLAMBE-GLAZED OVOID VASE**  
Impressed Roman numeral XX; decorated with pine boughs & cones. 12 3/4 in. tall. From St. Mary's Convent, Peekskill, New York.  
Estimate: \$700 - \$900



**Lot #71: DELFT BLUE & WHITE PLATE**  
With bamboo, lotus & willow motifs; 8 3/4 in. diameter.  
Estimate: \$100 - \$200



**Lot #72: GROUP OF ENGLISH CERAMIC TABLE ARTICLES**  
Comprising: a Spode "2635" sauce tureen, cover & stand with gilt butterfly handles, a 14 1/2 in. Ashworth ironstone 2-handled tureen, cover & stand with iron red, black & gold foliate decoration, an improved ironstone China tear-form spoon rest & a Ridgway crescent-form dish & cover. Approx. 6 pcs.  
Estimate: \$200 - \$300



**Lot #73: SET OF TWELVE OCTAGONAL DINNER PLATES WITH TRANSFER DECORATED GRISAILLE SCENES**  
Retailed by A. Schmidt & Son, New York; together with 2 English grisaille decorated plates with landscape views.  
Width of set: 9 3/4 in.  
Estimate: \$200 - \$300





**Lot #74: SET OF SIX ROYAL COPENHAGEN POTS DE CREME & COVERS & A SEVRES PORCELAIN STAND**

The cups with underglaze blue wave mark, the stand with crossed L's enclosing, "N.N." beneath a cap, on underglazed ground, each with floral clusters, the cups with basketweave bands & rose bud knobs.

Estimate: \$500 - \$700



**Lot #75: MEISSEN BLUE ONION PATTERN BOWL**

With everted partially notched rim. 15 3/4 in. diameter.

Estimate: \$300 - \$500



**Lot #76: SEVRES PORCELAIN PUCE FLORAL DECORATED SUCRIER & COVER**

The marks include TX, underglaze blue, crossed L's enclosing the number "2", above fleur de lis & BD in script; with gilt apple knob; 4 in. tall & 3 1/2 in. diameter.

Estimate: \$250 - \$350



**Lot #77: TWELVE MINTON SERVICE PLATES WITH MAROON BORDERS & GILT EMBOSSED BANDS**

Retailed by Tiffany & Co.; 10 1/4 in. diameter

Estimate: \$300 - \$400



**Lot #78: TWELVE ROYAL WORCESTER VICEROY PATTERN TEA CUPS & SAUCERS, TWELVE ARENFELDT LIMOGES 12-SIDED SOUP PLATES WITH GILT EMBOSSED BORDERS & TWELVE BREAD & BUTTER PLATES**

(approx. 48 pcs) diameters of plates: 8 1/2 in. & 6 1/2 in.

Estimate: \$400 - \$600



**Lot #79: TWELVE ROYAL DOULTON SERVICE PLATES & TWELVE SIMILAR DOULTON BURSLEM PLATES WITH COBALT BORDERS & GILT DECORATION**

The service plates retailed by Tiffany & Co.; 10 12/ in. & 8 1/4 in. diameter.

Estimate: \$450 - \$650



**Lot #80: PAIR OF CHELSEA GOLD ANCHOR MARK PORCELAIN FIGURAL CANDLESTICKS**

The one modeled as a hound with paw on a pheasant, the other as a fox, floral encrusted tree trunk & base; 11 in. tall.

Estimate: \$300 - \$500



**Lot #81: MEISSEN PORCELAIN FLORAL PAINTED CUP & SAUCER WITH SKY BLUE BORDER**

With underglaze blue AR monogram; together with a Chelsea style transfer decorated bird cup & saucer & gilt decorated cup & saucer.

Estimate: \$150 - \$250



**Lot #82: ASSEMBLED GROUP OF THREE GRADUATED IRONSTONE IMARI PATTERN TWO-HANDLED VASES**

The largest with pierced bell-form cover. Height: 9 3/4 in.

Estimate: \$125 - \$175



**Lot #83: NYPHENBURG IVORY-GLAZED PORCELAIN FIGURE OF BACCHUS**

With impressed shield mark; 14 3/4 in. tall.

Estimate: \$350 - \$450



**Lot #84: MEISSEN IVORY-GLAZED FIGURE OF A PARROT PERCHED ON A TREE STUMP**

Underglaze blue cross swords; with floral encrusted naturalistic base & ivy entwined trunk, 17 1/4 in. tall.  
Estimate: \$200 - \$400



**Lot #85: SET OF FOUR NYMPHENBURG IVORY-GLAZED PORCELAIN FIGURES OF THE SEASONS**

With impressed shield mark; comprising 2 identical figures of summer, 1 of fall & 1 of winter; together with a Nymphenburg group of a girl & peacock; Heights: 4 1/8 in. to 6 1/2 in.  
Estimate: \$700 - \$900



**Lot #86: TWO SEVRES PORCELAIN COBALT GROUND SUCRIERS & COVERS**

Marks interlaced L's enclosing "C" above 2 lined & with salmon initials NS, the other with plain L's mark: the one with bird reserves molded ring handles & pine cone knob, the second with gilt brickwork. Diameter of each 3 1/2 in. Heights: 5 in. & 3 3/4 in.  
Estimate: \$300 - \$400



**Lot #87: PAIR OF PARIS PORCELAIN OVOID MANTLE URNS & A PAIR OF PARIS EMERALD GREEN GROUND SCENT BOTTLE & STOPPERS**

The urns with floral encrusted swags on gilt & royal blue ground; the bottles by Rihouet with "jeweled" cabochons & oval floral reserves. Heights: 9 3/4 in. & 3 1/2 in.  
Estimate: \$400 - \$600



**Lot #88: PAIR OF WEDGWOOD TAN & BLACK JASPERWARE PEAR-FORM BUD VASES**

Impressed Wedgwood, one with capital A & small wing mark; 5 in. tall.  
Estimate: \$100 - \$150



**Lot #89: PAIR OF ITALIAN GRAND TOUR BRONZE CANDLESTICKS**

Each cast with a canon, spears, helmets & quiver of arrows, on concave sided base. Height: 13 in. From St. Mary's Convent, Peekskill, New York.

Estimate: \$300 - \$400



**Lot #90: NAPOLEON III BRASS INLAID BURL & KINGWOOD LIQUEUR CASE**

The serpentine fronted double hinged top & front opening to a removable tiered tray fitted with 2 glass decanters & stoppers & six assembled stemmed liqueurs; 11 1/4 in. x 13 1/2 in.

Estimate: \$250 - \$350



**Lot #91: FRENCH LIQUEUR SET IN A CASE IN THE FORM OF A STACK OF 4 TOOLED LEATHER BOOKS**

The hinged lid opening to 2 gilt decorated block form glass decanters & stoppers & 6 cylindrical liqueurs.

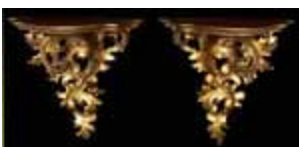
Estimate: \$200 - \$300



**Lot #92: CONTINENTAL INLAID WALNUT TOBACCO BOX**

The hinged lid with slide enclosed compartment above 1/4 veneered sides, molded base. 7 1/2 in. x 12 3/4 in. x 9 1/4 in.

Estimate: \$400 - \$600



**Lot #93: PAIR OF ITALIAN ROCOCO-STYLE CARVED GILTWOOD WALL BRACKETS**

Each shell carved shelf on open work scrolling foliate support; 11 1/4 in. x 10 1/2 in. x 5 3/4 in.

Estimate: \$250 - \$450



**Lot #94: PAIR OF LOUIS XVI-STYLE ORMOLU MOUNTED WHITE MARBLE CASOULETTES**

Each with reversible lid/candle nozzle, on tripod form headed legs & encircled base; 8 3/8 in. tall.

Estimate: \$700 - \$900



**Lot #95: PAIR OF EMPIRE-STYLE ORMOLU THREE LIGHT CANDELABRA**

Each with reeded stem, foliate cast arms, removable drip pans & concave sided base; 18 3/4 in. tall.

Estimate: \$600 - \$800



**Lot #96: PAIR OF REGENCY-STYLE BRASS MOUNTED CUT GLASS CANDLESTICKS**

With diamond faceted ovoid stems, prism hung drip pans & spherical nozzles with removable candle holders; height: 10 3/4 in.

Estimate: \$700 - \$900



**Lot #97: CHARLES X-STYLE BRONZE & GILT BRONZED MOUNTED GLASS COMPOTE & A CHARLES X TRENCHER SALT**

The compote with lobed dish on reeded & acanthus cast stem & the square base on lion's paw feet. Heights: 11 1/2 in. & 2 1/4 in. Diameters: 9 in. & 3 3/4 in.

Estimate: \$350 - \$550



**Lot #98: CONTINENTAL ENAMEL DECORATED RUBY GLASS COFFRET**

Estimate: \$100 - \$150



**Lot #99: CHARIOTEER SPELTER FIGURE GROUP**

20 1/4 in. tall

Estimate: \$300 - \$500



**Lot #100: SWISS 19-INCH CYLINDER MUSIC BOX IN A  
MARQUETRY INLAID**

**ROSEWOOD CONSOLE, BY C. PAILLARD & CO., ST.  
CROIX**

The hinged lid with bird's eye maple interior; length over  
handles: 34 1/2 in. From St. Mary's Church, Peekskill, NY.

Estimate: \$2,000 - \$4,000