

Lots 201 - 210



**Lot #201: Charles L. Fenton (American, 1808-1877):
Pair of Portraits of a Husband and Wife**

Oil on canvas, portrait of husband signed and dated 1835 on verso, framed; 29 3/4 x 25 in. Provenance: Ex Collection of Robertson and Mary Paige Alford, Norfolk, CT.

Estimate: \$ 400.00 - \$ 600.00



Lot #202: Lucy Garriot: Town Square with Fountain

Etching, signed in pencil lower left, matted and framed; 7 1/2 x 3 3/4 in. (image).

Estimate: \$ 20.00 - \$ 40.00



Lot #203: L. Candelle: Landscape with Cows

Watercolor on paper, signed lower right, framed; 12 1/2 x 24 1/2 in. (sight).

Estimate: \$ 400.00 - \$ 600.00



Lot #204: Japanese Painted Paper Fan

Mounted on paper; fan 8 1/2 x 19 in.

Estimate: \$ 150.00 - \$ 250.00



**Lot #205: English School: Portrait of William
MacPhearson**

Oil on canvas, relined, on a new stretcher, inscribed on verso W. MacPhearson 1821 and John Ainslie, with original label from Dundee; 39 1/2 x 33 1/2 in.

Estimate: \$ 800.00 - \$ 1200.00



Lot #206: After Jessie Wilcox Smith: "Beauty and the Beast"

Reproduction print, matted; 12 x 9 in. (image).
Estimate: \$ 25.00 - \$ 50.00



Lot #207: European School: Still Life with Floral Arrangement

Oil on canvas, 31 5/8 x 19 5/8 in.
Estimate: \$ 500.00 - \$ 1000.00



Lot #208: Continental School: Two Landscapes with Castles

Mixed media on paper, framed; 4 x 5 1/4 in. (sight).
Estimate: \$ 50.00 - \$ 100.00



Lot #209: J. Gould and H.C. Richter, Publishers: Three Prints from "The Birds of Great Britain"

Hand-colored lithographs, matted and framed; 20 1/2 x 13 3/4 and 13 3/4 x 20 1/2 in. (sight).
Estimate: \$ 300.00 - \$ 600.00



Lot #210: After Louis Icart: "Eve"

Engraved and painted wood panel, framed; 30 3/4 x 19 1/4 in.
Estimate: \$ 100.00 - \$ 200.00

Lots 211 - 220



Lot #211: Attributed to Johannes Bosboom: Church Interior with Figures

Watercolor, pen and ink on paper, initialed lower left; 14 x 10 1/4 in. (image).

Estimate: \$ 1000.00 - \$ 2000.00



Lot #212: Italian School: Grand Canal, Venice

Pen, ink and wash on paper, unsigned, framed; 4 7/8 x 7 1/4 in. (image).

Estimate: \$ 30.00 - \$ 50.00

Lot #213: NO LOT



Lot #214: After Bauer: Ruins in a Landscape

Print, matted and framed; 17 1/4 x 14 in. (sight).

Estimate: \$ 100.00 - \$ 200.00



Lot #215: American School: Portrait of a Lady

Oil on copper, 12 x 10 in.

Estimate: \$ 300.00 - \$ 500.00



Lot #216: After Annibale Carracci: Holy Family

Hand-colored engraving, framed; 4 5/8 x 6 in. (sight).

Estimate: \$ 30.00 - \$ 50.00



Lot #217: Attributed to Johannes Bosboom: Church Interior

Watercolor on paper, 12 x 8 5/8 in. (sight), signed "J Bosboom" lower left and inscribed indistinctly lower right.
Estimate: \$ 1000.00 - \$ 2000.00



Lot #218: Italian School: Classical Scene with Figures

Pen, ink and pencil on paper, unframed; 10 3/4 x 15 3/4 in. (sheet).
Estimate: \$ 50.00 - \$ 75.00



Lot #219: German School: Set of Four Drawings

Ink and watercolor, three with extensive notation; 6 1/4 x 7 3/8 in. (image, sight).
Estimate: \$ 500.00 - \$ 700.00



Lot #220: 19th C. School: Winter Landscape

Pastel on paperboard, matted and framed; 13 1/4 x 5 1/4 in.
Provenance: Property of the Berkshire Museum, Pittsfield, Mass.
Estimate: \$ 100.00 - \$ 200.00

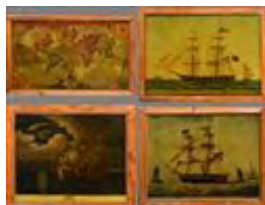
[Back](#)

[Back to Index](#)

[Next](#)

Lots 221 - 230

Lot #221: NO LOT



Lot #222: Four Colored Reverse Glass Prints, Framed

Including "William Thomas of Sunderland," "Diana Van Amsterdam," "His Majesty's Ship Mediator" and "A New and Correct Map of the World"; largest 25 3/4 x 42 in. (frame).

Estimate: \$ 300.00 - \$ 500.00



Lot #223: European School: The Reluctant Horse

Oil on cradled panel, 12 3/8 x 16 in.

Estimate: \$ 800.00 - \$ 1200.00



Lot #224: Continental School: Figure Group

Pencil and chalk on paper, matted and framed; 12 1/4 x 8 1/4 in. (sight).

Estimate: \$ 100.00 - \$ 200.00



Lot #225: J. Gould and H.C. Richter, Publishers: Four Prints from "The Birds of Great Britain"

Hand-colored lithographs, matted and framed; 13 3/4 x 20 1/2 in. (sight).

Estimate: \$ 400.00 - \$ 800.00



Lot #226: American School (19th C.): Landscape with Huntsman

Oil on canvas laid down on board, unsigned, unframed; 19 1/4 x 16 in.

Estimate: \$ 200.00 - \$ 400.00



Lot #227: Myrtle Jean McLane (1878-1964): Three Women in a Landscape

Oil on canvas, signed and dated '78; 22 x 29 7/8 in.
Estimate: \$ 1500.00 - \$ 3000.00



Lot #228: E. S. Colborne: Portrait of a Boy

Oil on canvas, signed and dated 1903 lower right,
framed; 27 1/8 x 20 1/4 in.
Estimate: \$ 100.00 - \$ 200.00



Lot #229: J. Gould and H.C. Richter, Publishers: Four Prints from "The Birds of Great Britain"

Hand-colored lithographs, matted and framed; 20 1/2 x 13 3/4 in. (sight).
Estimate: \$ 400.00 - \$ 800.00



Lot #230: Currier and Ives, Publishers (1834-1907): "Woodcock Shooting" and "The Trout Pool"

Hand-colored lithographs, matted and framed; larger 9 1/2 x 13 in. (sight).
Estimate: \$ 150.00 - \$ 250.00

[Back](#)

[Back to Index](#)

[Next](#)

Lots 231 - 240



Lot #231: After Francois Flamand, Dit le Quesnoi (1594-1646): The Holy Family with St. John the Baptist

Terracotta, inscribed Francois Flamand and with the date 1637, in giltwood frame with engraved copper plate on back; 15 x 12 in. and 21 x 18 in.

Estimate: \$ 800.00 - \$ 1200.00



Lot #232: Napoleon III Gilt-Brass Mounted Enameled Opaque White Glass Candlestick, Mounted as a Lamp

26 1/4 in. overall.

Estimate: \$ 50.00 - \$ 75.00



Lot #233: Pair of Napoleon III Brass-Mounted Porcelain Carcel Lamps, Electrified

23 in. overall.

Estimate: \$ 50.00 - \$ 75.00



Lot #234: Continental Gilt and Blue Enameled White Opaline Glass Bottle-Form Vase, Mounted as a Lamp

13 1/2 (27 1/2 in. overall).

Estimate: \$ 200.00 - \$ 400.00



Lot #235: Pair of Paris Porcelain Jacob Petit-Style Gilt and Polychrome Decorated Chinoiserie Figural Candlesticks, Mounted as Lamps

13 in. (25 3/4 in. overall).

Estimate: \$ 500.00 - \$ 700.00



**Lot #236: Chinese Green Crackle-Glazed Porcelain
Bottle-Form Vase, Mounted as a Lamp**

13 1/4 in. (18 in. overall).
Estimate: \$ 50.00 - \$ 75.00



**Lot #237: Pair of Continental Gilt and Polychrome
Decorated Porcelain Bottle-Form Vases, Mounted as
Lamps**

One badly damaged and repaired; 28 3/8 in. (overall).
Estimate: \$ 100.00 - \$ 200.00



**Lot #238: Empire-Style Gilt-Bronze Candlestick,
Mounted as a Lamp**

11 3/4 in. (18 3/4 in. overall).
Estimate: \$ 400.00 - \$ 600.00



**Lot #239: Pair of Louis XV-Style Gilt-Metal
Candlesticks, Mounted as Lamps**

13 in. (27 1/2 in. overall), 6 1/4 in. diam.
Estimate: \$ 75.00 - \$ 100.00



**Lot #240: George III-Style Cut-Glass Five-Light
Chandelier**

17 3/4 in., 18 1/2 in. diam.
Estimate: \$ 175.00 - \$ 200.00

[Back](#)

[Back to Index](#)

[Next](#)

Lots 241 - 250



Lot #241: Pair of Late Victorian Gilt-Metal Mounted Art Glass Urns, Converted to Table Lamps

21 1/2 in. overall.

Estimate: \$ 500.00 - \$ 700.00



Lot #242: Louis XV-Style Gilt-Metal and Glass Bead Six-Light Chandelier, Modern

36 in., 18 1/2 in. diam.

Estimate: \$ 50.00 - \$ 75.00



Lot #243: Italian Neoclassical-Style Carved, Cream-Painted and Parcel-Gilt Candlestick, Mounted as a Lamp

23 1/4 in. (39 in. overall). Provenance: Ex Collection of Robertson and Mary Paige Alford, Norfolk, CT.

Estimate: \$ 200.00 - \$ 400.00



Lot #244: Louis XV-Style Gilt-Metal and Glass Six-Light Chandelier

24 in., 21 in. diam. Provenance: Ex Collection of Robertson and Mary Paige Alford, Norfolk, CT.

Estimate: \$ 500.00 - \$ 750.00



Lot #245: Limoges Gilt and Polychrome Decorated Porcelain Punch Bowl on Stand

9 1/4 in., 14 1/4 in. diam.

Estimate: \$ 400.00 - \$ 800.00

Lot #246: Twenty Assorted Staffordshire Transfer-Printed Table Articles



Including two 'Medina' pattern plates, three 'Medina' pattern tea bowls with matching saucers, 'Medina' pattern platter, Wedgwood 'Washington Vase' pattern plate, bowl and covered vegetable dish, milk jug, teapot, sugar bowl, two 'Colonial Times' pattern bread & butter plates, 'Dora' pattern bowl, 'Colonial Times' pattern dish and a flow blue bowl.

Estimate: \$ 200.00 - \$ 400.00



Lot #247: Victorian-Style Porcelain Lemonade Cooler, Modern

Marked "Two's Company"; 10 1/2 in.

Estimate: \$ 150.00 - \$ 250.00

Lot #248: Staffordshire Brown Transfer-Printed 'Tuscan Rose' Pattern Part Dinner Service



Comprising four dinner plates, four soup plates, four bread & butter plates, two dessert plates, meat platter, stand, oval dish, water pitcher and reticulated basket. Together with a brown transfer-printed teapot; dinner plates 10 3/8 in. diam., pitcher 8 1/2 in.

Estimate: \$ 150.00 - \$ 200.00

Lot #249: Four Staffordshire Flow Blue 'Manilla' Pattern Plates



Together with four assorted flow blue 'Chapoo' pattern plates, two blue transfer-printed 'Nonpareil' pattern plates, four R & M Co. blue transfer-printed Revolutionary War battle scene plates and five other Staffordshire blue transfer-printed table articles; 'Manilla' plates 9 7/8 in. diam.

Estimate: \$ 200.00 - \$ 400.00



Lot #250: Sevres-Style Gilt-Brass Mounted Gilt and Polychrome Transfer-Decorated Porcelain Dresser Box

5 x 10 3/4 x 7 in.

Estimate: \$ 50.00 - \$ 100.00

Lots 251 - 260



Lot #251: Shelley Bone China Individual Breakfast Service

Muffin dish 4 in., 7 1/4 in. diam.

Estimate: \$ 100.00 - \$ 150.00



Lot #252: Gefle Sweden Pottery Part Dinner Service

Comprising ten dinner plates (9 1/2 in. diam.), twelve soup plates (9 1/2 diam.), seven salad plates (8 1/4 in. diam.), eleven dessert plates, sauceboat with attached stand, oval serving bowl, two graduated oval serving dishes, pair of two-handled oval dishes and a water pitcher.

Estimate: \$ 75.00 - \$ 125.00



Lot #253: Staffordshire Salt-Glazed Stoneware Plate

Together with eight porcelain and pottery table articles; stoneware plate 9 3/4 in. diam.

Estimate: \$ 200.00 - \$ 300.00



Lot #254: English 'Japan' Pattern Child's Tea Cup and Saucer

1 x 2 1/2 in.

Estimate: \$ 25.00 - \$ 50.00



Lot #255: Five French and English Creamware Table Articles

Including a reticulated plate stamped "Altrohlau," a basketweave plate with reticulated border, a pair of oval basketweave bowls with reticulated borders and an oval basketweave dish with reticulated border; oval dish 12 1/4 in.

Estimate: \$ 100.00 - \$ 150.00



Lot #256: English Porcelain Miniature Tea Service

Tray 9 1/2 x 5 7/8 in.

Estimate: \$ 700.00 - \$ 900.00



Lot #257: Two Staffordshire Lusterware Milk Jugs

Together with a Noritake porcelain seven-piece part dinner service, seven Lenox porcelain 'Ming' pattern plates (9 in. diam.), three Limoges porcelain soup plates, five German porcelain fruit bowls and two Spode porcelain teacups; larger lusterware jug 6 x 7 3/4 in.

Provenance: Ex Collection of Robertson and Mary Paige Alford, Norfolk, CT.

Estimate: \$ 100.00 - \$ 200.00



Lot #258: Paris Porcelain-Style Parcel-Gilt Reticulated Basket, Retailed by Bonwit Teller

5 3/8 x 13 1/2 in. Provenance: Ex Collection of Robertson and Mary Paige Alford, Norfolk, CT.

Estimate: \$ 200.00 - \$ 400.00



Lot #259: English Ironstone 'Timor' Pattern Covered Vegetable Dish

Together with three porcelain teacups and five saucers; vegetable dish 6 1/4 x 11 1/2 in.

Estimate: \$ 75.00 - \$ 125.00



Lot #260: Staffordshire Transfer-Printed Creamware 'Lord Nelson' Jug

8 x 8 in.

Estimate: \$ 100.00 - \$ 200.00

[Back](#)

[Back to Index](#)

[Next](#)

Lots 261 - 270



**Lot #261: Royal Copenhagen Porcelain 'Flora Danica'
Part Dinner Service**

Comprising two dinner plates (10 1/8 in. diam.), two reticulated plates (10 1/4 in. diam.), two soup plates, seven bread & butter plates and an oval serving dish.

Estimate: \$ 300.00 - \$ 500.00



**Lot #262: Spode-Copeland Pearlware 'Tumbledown Dick'
Pattern Two-Handled Basket**

Together with Mottahedeh/Vista Alegre Chinese Export-style porcelain dish and pomegranate-form covered box; basket 14 1/4 x 12 in.

Estimate: \$ 100.00 - \$ 200.00



**Lot #263: Pair of Paris Porcelain Gilt and Polychrome
Decorated Mantel Vases**

Together with a French gilt-banded opaline glass cuspidor; vases 12 x 9 1/2 in.

Estimate: \$ 50.00 - \$ 100.00



**Lot #264: French Chinese Export-Style Porcelain Punch
Bowl, Retailed by Tiffany & Co.**

5 1/2 in., 11 1/4 in. diam.

Estimate: \$ 75.00 - \$ 100.00



**Lot #265: Continental Blanc-de-Chine Porcelain Model of
a Stag**

Marked in underglaze blue; repaired; 19 1/2 x 19 3/4 in.

Estimate: \$ 300.00 - \$ 600.00



**Lot #266: Eight German Pewter-Mounted Stoneware
Steins**

10 3/4 in., 4 1/2 in. diam.

Estimate: \$ 100.00 - \$ 200.00



Lot #267: Richard Ginori Gilt and Polychrome Decorated Porcelain Part Dinner Service

Comprising ten bowls (8 in. diam.), eight bread & butter plates (6 3/4 in. diam.), seven teacup saucers and three demitasse cup saucers.

Estimate: \$ 75.00 - \$ 125.00



Lot #268: Eleven German Gilt and Polychrome Decorated Porcelain Reticulated Plates

Together with three Spode-Copeland porcelain teacups, four saucers, six Rosenthal porcelain bouillon cups, an English porcelain teacup, four saucers, four Wedgwood creamware plates and a Blue Willow saucer; German plates 7 in.

Provenance: Property of the Crane Family, Dalton, MA

Estimate: \$ 50.00 - \$ 75.00



Lot #269: Majolica Pitcher

9 in.

Estimate: \$ 300.00 - \$ 500.00



Lot #270: Pair of Coalport Gilt and Polychrome Decorated Cobalt Blue-Ground Porcelain Vegetable Dishes and Covers

Together with seven Coalport porcelain demitasse cups and eight saucers; vegetable dishes 6 x 11 1/4 in. handle to handle.

Estimate: \$ 150.00 - \$ 250.00

[Back](#)

[Back to Index](#)

[Next](#)

Lots 271 - 280



Lot #271: Set of Twelve Cauldron Gilt Decorated Porcelain Dinner Plates, Retailed by Davis Collamore & Co. Ltd., New York

10 1/4 in. diam. Provenance: Property of the Crane Family, Dalton, MA

Estimate: \$ 50.00 - \$ 75.00



Lot #272: Set of Twelve Creil et Montreau Transfer-Printed Ironstone 'Les Sports' Bread & Butter Plates

6 5/8 diam.

Estimate: \$ 100.00 - \$ 200.00



Lot #273: Eleven Wedgwood Gilt and Polychrome Decorated Porcelain Plates

Together with five Royal Worcester Aesthetic Movement porcelain plates; Wedgwood plates 8 7/8 in.

Estimate: \$ 200.00 - \$ 300.00



Lot #274: Pair of Victorian Porcelain Hand-Form Vases

Together with four Royal Copenhagen porcelain 'Flora Danica' salts, two porcelain teacups and saucers, a bouillon cup and saucer, two demitasse cups and saucers, a Royal Doulton figure and four other porcelain table articles; 7 1/2 in.

Estimate: \$ 200.00 - \$ 400.00



Lot #275: English Blue Transfer-Printed Porcelain Open Vegetable Bowl

2 x 12 1/2 in.

Estimate: \$ 100.00 - \$ 150.00



Lot #276: English Miniature Porcelain Tea Service

Tray 9 3/8 x 5 3/4 in.

Estimate: \$ 700.00 - \$ 900.00



Lot #277: Set of Twelve Minton Gilt Decorated Porcelain Dinner Plates

10 1/4 in. diam.

Estimate: \$ 100.00 - \$ 200.00



Lot #278: Iberian Majolica Model of a Peacock

Repaired. 25 1/2 x 14 1/2 in.

Estimate: \$ 400.00 - \$ 600.00



Lot #279: Spode-Copeland Gilt and Polychrome Transfer-Decorated Porcelain Part Tea Service, Retailed by Tiffany & Co., New York

Comprising teapot, sugar bowl, cream pitcher, ten teacups, ten saucers and twelve dessert plates; teapot 5 1/2 in., plates 8 in. diam.

Estimate: \$ 200.00 - \$ 300.00



Lot #280: Pair of Italian Neoclassical-Style Maiolica Urns

13 1/2 in., 5 in. diam.

Estimate: \$ 300.00 - \$ 500.00

[Back](#)

[Back to Index](#)

[Next](#)

Lots 281 - 290



Lot #281: Thirteen English Gilt and Polychrome Decorated Porcelain Dessert Plates

8 3/4 in. diam.

Estimate: \$ 150.00 - \$ 250.00



Lot #282: Minton Gilt Decorated Porcelain Part Dinner Service, Retailed by Davis Collamore & Co., Ltd., New York

Comprising twelve dinner plates (10 in. diam.), twelve soup plates (9 1/2 in. diam.) and twelve bread and butter plates.

Estimate: \$ 300.00 - \$ 500.00



Lot #283: Eight Staffordshire Table Articles

Including a blue transfer-printed coffee pot, two lusterware teapots, two lusterware cream pitchers, teapot, brown transfer-printed milk jug and a polychrome transfer-printed milk jug; coffee pot 11 in.

Estimate: \$ 100.00 - \$ 150.00



Lot #284: Sixteen English and Continental Porcelain and Pottery Table Articles

Including a Staffordshire red transfer-printed bowl, a pair of porcelain reticulated square dishes, a Belleek porcelain shell-form dish, two pottery trivets, a Capodimonte porcelain dish, assorted maiolica, a millefiori glass dish, a set of enameled metal coral-form placecard holders, three biscuit porcelain leaf-form bowls and an Art Nouveau-style pottery mug.

Estimate: \$ 200.00 - \$ 300.00



Lot #285: Twenty-One Assorted Staffordshire Blue Transfer-Printed Table Articles

Including plates, bowls, vegetable dish, two bone dishes, teapot, water pitcher and sauceboat. Together with a Royal Copenhagen porcelain 'Blue Onion' pattern stand and a Japanese blue and white porcelain dish; tallest 9 1/4 in.

Estimate: \$ 150.00 - \$ 250.00



Lot #286: English Porcelain Miniature Tea Service

Tray 9 1/2 x 5 7/8 in.

Estimate: \$ 700.00 - \$ 900.00



Lot #287: French Blue Transfer-Printed and Gilt Ironstone Part Game Service

Comprising a meat platter (17 1/2 in. wide) and seven plates (9 1/4 in. diam.). Together with six Ridgways blue transfer-printed plates, five assorted Staffordshire meat platters and a French faience round platter.
Estimate: \$ 300.00 - \$ 50.00



Lot #288: Coalport Gilt and Polychrome Transfer-Decorated Porcelain Part Tea and Coffee Service

Comprising a covered muffin dish, open bowl, cream pitcher, open sugar bowl, six plates, thirteen teacups, fourteen teacup saucers, six demitasse cups and six demitasse-cup saucers; muffin dish 5 in., 9 in. diam.
Estimate: \$ 200.00 - \$ 400.00



Lot #289: Royal Cornwall, Ltd. Gilt and Polychrome Decorated Porcelain 'Raphael' Pattern Pots-de-Crème Set

Comprising twelve pots and twelve stands. Together with a wall rack; pots 3 in.
Estimate: \$ 100.00 - \$ 200.00



Lot #290: Portuguese Majolica Tureen, Cover and Stand, Modern

9 x 18 1/2 in. Provenance: The Collection of James Beard.
Estimate: \$ 150.00 - \$ 250.00

[Back](#)

[Back to Index](#)

[Next](#)

Lots 291 - 300



Lot #291: Staffordshire Polychrome and Transfer-Printed Part Tea Service

Comprising six teacups, six saucers and six dessert plates; plates 7 1/4 in. diam.

Estimate: \$ 100.00 - \$ 125.00



Lot #292: Set of Twelve KPM Berlin Gilt Porcelain Octagonal Reticulated Dessert Plates

Marked with underglaze blue scepter and KPM; 8 x 8 in.

Estimate: \$ 200.00 - \$ 300.00



Lot #293: Three English Ironstone Sauce Tureens with Stands

Together with an ironstone soup tureen and cover; soup tureen 11 1/2 x 13 1/2 in.

Estimate: \$ 150.00 - \$ 250.00



Lot #294: Royal Vienna Gilt and Polychrome Decorated Porcelain Cream Pitcher, Sugar Bowl and Hot Milk Jug

Together with twelve Royal Vienna-style porcelain cups and saucers (six of each), a Royal Vienna-style bowl and a Dresden porcelain chocolate pot; tallest 9 1/2 in.

Estimate: \$ 500.00 - \$ 1000.00



Lot #295: Fifteen Assorted Staffordshire Table Articles

Including a teapot, sugar bowl, oval dish, six milk jugs, covered vegetable dish, three assorted plates and two hot-water dishes; tallest 7 1/8 in.

Estimate: \$ 300.00 - \$ 500.00



Lot #296: English Porcelain Miniature Tea Service

Tray 7 1/4 x 6 in.

Estimate: \$ 700.00 - \$ 900.00



Lot #297: Pair of Neoclassical-Style Gilt Plaster Wall Brackets

9 1/2 x 6 x 5 1/2 in.

Estimate: \$ 50.00 - \$ 75.00



Lot #298: Austrian Rock Crystal-Inset Silver-Gilt, Pink Enamel and Cloisonné Enamel Covered Box

2 1/4 x 4 1/2 x 3 1/2 in.

Estimate: \$ 200.00 - \$ 400.00



Lot #299: Czechoslovakian Green-Flashed Cut Glass Centerpiece Bowl

8 1/2 in., 11 in. diam.

Estimate: \$ 100.00 - \$ 200.00



Lot #300: Federal-Style Grain-Painted and Decorated Shelf Clock, Toad Hall, Cooperstown, NY

23 1/4 x 14 x 8 in.

Estimate: \$ 100.00 - \$ 200.00

[Back](#)

[Back to Index](#)

[Next](#)