

Lots 101 - 110



Lot #101: LOUIS XVI-STYLE GILT-BRONZE MOUNTED VEINED BLUE MARBLE TWO-HANDLED URN

The baluster-form bowl with foliate-cast angular handles and egg-and-dart base ring, the attached cover with foliate knob; 9 5/8 x 7 1/2 in.

Estimate: \$ 300.00 - \$ 500.00



Lot #102: CHINESE BLUE AND WHITE CRACKLE-GLAZED BALUSTER-FORM VASE WITH LOUIS XVI-STYLE GILT-BRONZE MOUNTS

The bowl depicting a group of 5 figures in relief beneath a pine tree, the neck with 2 figures amidst clouds, flanked by foliate-cast bifurcated handles, the base with ribbon-bound husk ring and leaf tip and bead bands; 22 x 12 in.

Estimate: \$ 3000.00 - \$ 5000.00



Lot #103: PAIR OF WILLIAM IV GLASS-MOUNTED BRONZE AND MARBLE OIL LAMPS WITH HURRICANE SHADES

Each cast as a spiral-fluted cornucopium rising from a boar's head supporting the prism-hung drip pan, on cylindrical pedestal and molded base; to shade rim: 24 x 15 1/2 in.

Estimate: \$ 2000.00 - \$ 3000.00



**Lot #104: EMPIRE-STYLE CUT-GLASS
MOUNTED GILT-BRONZE SIX-LIGHT
CANDELABRUM ON TOLE PEINTE
PEDESTAL**

The main ring with entrelac bands and supporting wreath-backed c-scroll arms and centering an anthemion applied ring, joined to base by faceted drops, the black-ground pedestals on leaf-backed lion's paw feet; 30 x 16 1/2 in.

Estimate: \$ 600.00 - \$ 800.00



**Lot #105: CHARLES X EGLIMISE AND
ROSEWOOD BAROMETER**

The oblong hexagonal dial with gilt shells on an opaque ground, the shaped border panels with radial rondels, beneath a lyre-form crest centering a thermometer dial; 34 1/4 x 20 1/4 in.

Estimate: \$ 800.00 - \$ 1200.00



**Lot #106: PAIR OF LOUIS XVI-STYLE
GILT-METAL MOUNTED WHITE
MARBLE URNS**

Each ovoid bowl with pierced ribbon and laurel flanked by bifurcated reeded handles, the slender neck with petal tip band, on flared stem and a base with notched corners, raised on later painted wooden stands, drilled; 21 in., with stand: 24 1/2 in.

Estimate: \$ 700.00 - \$ 1000.00

**Lot #107: FRENCH RENAISSANCE-
STYLE PAINTED AND GILT-METAL
MOUNTED ONYX THREE-PIECE
CLOCK GARNITURE**



Retailed by Tiffany and Co., NY: the 4 1/2 in. clock dial set into an architectural breakarch case with free-standing columns beneath grotesque head and onion dome; the five-light candelabra with griffen handles beneath raised central arm and c-scroll arms, each on flared bracket feet; 27 1/4 in. and 25 1/2 in. x 15 1/2 in. and 9 in. x 8 3/4 in.

Estimate: \$ 4000.00 - \$ 6000.00

**Lot #108: PAIR OF LOUIS XVI-STYLE
GILT-METAL AND WHITE MARBLE SIX-
LIGHT FIGURAL CANDELABRA**



Each modeled as a playful putto with grape fillet in his hair, supporting the grape entwined cornucopium from which rise the s-scroll arms, on fluted base fitted with ribbon-tied floral swags; 29 1/4 x 14 in.

Estimate: \$ 1200.00 - \$ 1800.00

**Lot #109: PAIR OF LOUIS XVI-STYLE
GILT-BRONZE AND MARBLE
CANDLESTICKS**



Each triangular horizontal-fluted stem with leaf tips and husk swags beneath fluted shoulder and urn cup, foliate and husk lower section on white marble base; 10 1/2 in., 4 3/4 in. diam.

Estimate: \$ 500.00 - \$ 800.00



**Lot #110: EMPIRE-STYLE GILT-METAL
FIGURE OF CUPID**

Modeled seated with upraised arms, on black
lacquer block-form pedestal and black marble
base; 8 1/2 x 4 3/4 in.

Estimate: \$ 250.00 - \$ 450.00

[To Top](#)

[Back](#)

[Next](#)

Lots 111 - 120



Lot #111: ENGLISH WALNUT AND EBONIZED WOOD PEAT PAIL

The tapered ringed body with ebonized rim, 2 molded bands and base and swing handle, now fitted with a brass liner; 13 1/2 in., 12 1/2 in. diam.

Estimate: \$ 800.00 - \$ 1200.00



Lot #112: ASSEMBLED SET OF FOUR FRENCH BRASS CANDLESTICKS

Each octagonal tapered stem with conforming shoulder and nozzle, bell-form base; 9 1/4 to 9 1/2 in. x 5 to 5 1/2 in.

Estimate: \$ 1000.00 - \$ 1500.00



Lot #113: GROUP OF THREE FRENCH BRASS-MOUNTED OPALINE BOXES

Comprising 2 of rectangular-form in green or opaque and one small oval box; 2 3/8 to 4 5/8 x 3 to 5 1/2 in.

Estimate: \$ 300.00 - \$ 500.00



Lot #114: RENAISSANCE-STYLE BRONZE-MOUNTED MARBLE CLOCK

Retailed by J.W. Benson, London: the 4 3/4 in. dial with incised gilt numerals, within drum case above pendants and a balustraded base, with front urns, bun feet; 19 1/4 x 9 x 8 in.

Estimate: \$ 700.00 - \$ 900.00



Lot #115: PAIR OF ENGLISH ENGRAVED FROSTED GLASS WINE COOLERS AND A PAIR OF MATCHING DECANTERS

Each matt bowl with quatrefoil florettes and fret bands, the coolers with clear liners with roll over rims; 7 1/4 and 11 1/4 in., 9 and 4 in. diam. Estimate: \$ 600.00 - \$ 800.00



Lot #116: CHARLES X-STYLE GILT-METAL-MOUNTED CUT-GLASS CAMPANI-FORM URN

The bowl with blue borders and diagonal leaf and diamond-faceted bands, fitted with egg-and-dart rim, leaf-capped scroll handles, flute stem husk wreath and notched base; 14 in., 8 1/4 in. diam.

Estimate: \$ 700.00 - \$ 900.00



Lot #117: LOUIS XVI-STYLE GILT-BRONZE MANTEL CLOCK

The 7 in. enamel dial signed, "Raingo Freres a Paris" beneath bow knot and set into glass-sided case with petal tip encadrements, above base panels relief cast with playful cherubs; 20 x 12 1/2 x 7 1/2 in.

Estimate: \$ 600.00 - \$ 800.00



Lot #118: ASSEMBLED PAIR OF CUT AMBER GLASS JARS AND COVERS

Each faceted bowl with lobed everted rim on knopped stem and 13-sided foot, the bell-form covers with prismatic knobs; 16 and 16 1/4 in., 7 7/8 diam. of each.

Estimate: \$ 300.00 - \$ 500.00



Lot #119: LOUIS-PHILIPPE GILT-BRONZE FIGURAL CLOCK

The 3 1/2 in. dial within a block case applied with anthemion at the front, surmounted by a group modeled as a Medieval couple in a boat, the base with acanthus band and scroll feet; 22 1/4 x 13 x 6 1/4 in.

Estimate: \$ 700.00 - \$ 1000.00



Lot #120: VICTORIAN BURR WALNUT TABLE CABINET

Enclosed by a pair of doors opening to 3 drawers with brass recessed ring handles, the sides with drop handle, on a plinth.

Estimate: \$ 400.00 - \$ 600.00

[To Top](#)

[Back](#)

[Next](#)

Lots 121 - 130



Lot #121: REGENCY FIGURED MAHOGANY TEA CADDY

The flattened dome hinged lid opening to mixing bowl recess and 2 lidded silvered paper-lined compartments, applied base; 6 3/4 x 12 1/4 x 5 3/4 in.

Estimate: \$ 300.00 - \$ 500.00



Lot #122: GEORGE III INLAID MAHOGANY TEA CADDY

The hinged 1/4-veneered lid with stellate medallion and brass drop handle, the case with diamond trellis stringing at the front and sides and with grid pattern on reverse; 5 5/8 x 9 1/8 x 5 1/8 in.

Estimate: \$ 700.00 - \$ 900.00



Lot #123: CONTINENTAL SILVER- MOUNTED TORTOISESHELL BOX

The lid with applied belted armorial, cabochons and foliate corners and beaded borders, the case with husk lower edge, raised on mask-headed feet; 2 1/8 x 8 1/8 x 11 1/8 in.

Estimate: \$ 1200.00 - \$ 1800.00



**Lot #124: ENGLISH SILVER-MOUNTED
TORTOISESHELL-WRAPPED TEA
CADDY**

The silver Mappin & Webb, Sheffield, 1896, of oval cross section, "Tea," beneath sloping shoulder and cylindrical cap; 3 7/8 x 3 in.
Estimate: \$ 300.00 - \$ 500.00



**Lot #125: VICTORIAN BRASS-MOUNTED
TIN ARTIST'S BOX**

Retailed by Evans & Son, Tyseley, B'ham: the hinged top with brass drop handle and a name plaque, "H. Price," the brass slide lock above a plain case; 9 1/4 x 12 1/4 x 8 1/2 in.
Estimate: \$ 150.00 - \$ 250.00



**Lot #126: BIEDERMEIER
TORTOISESHELL VENEERED SEWING
BOX**

The lid with green-stained ivory oval, pewter line-inlay and ivory edge, opening to a removable red-paper-lined tray with lidded and open compartments, the case with ivory spines; 3 1/2 x 12 x 10 in.
Estimate: \$ 2000.00 - \$ 3000.00



**Lot #127: ENGLISH SILVER-MOUNTED
VELVET DRESSING TABLE MIRROR**

Birmingham, 1900: the beveled plate within pierced flowerhead and vine-work border beneath shaped crest monogrammed A; 17 1/4 x 11 1/2 in.
Estimate: \$ 400.00 - \$ 600.00



**Lot #128: NAPOLEON III BRASS-INLaid
BURRWOOD AND TULIPWOOD LAP
DESK**

The double hinged top with central engraved monogram, opening to a recess backed by 2 glass wells and a lidded pen tray; 4 1/4 x 14 1/4 x 12 in. Provenance: From the estate of Fernando Sanchez.

Estimate: \$ 300.00 - \$ 500.00



**Lot #129: REGENCY TORTOISESHELL
VENEERED BOMBE TEA CADDY**

The flattened dome lid with silver-plate plaque, opening to 2 lidded compartments, the case with pewter line inlay and raised on ivory bun feet.

Estimate: \$ 800.00 - \$ 1200.00



**Lot #130: BIEDERMEIER
TORTOISESHELL VENEERED BOX**

The removable lid opening to a fabric-lined interior, above unembellished case raised on bun feet.

Estimate: \$ 700.00 - \$ 900.00

[To Top](#)

[Back](#)

[Next](#)

Lot 121



Click image above to enlarge

[Back](#)

Lot 122



[Click image above to enlarge](#)

[Back](#)

Lot 123



Click image above to enlarge

[Back](#)

Lots 131 - 140

Lot #131: TWO ENGLISH SILVER-HANDLED TORTOISESHELL PAGE CUTTERS



William Comyns, London, 1904, and S.J., London, 1895: the first initialed, "M.R.S." and dated 1905 beneath 2 identical scenes of pairs of lovers, rope bands and grotesque heads, the other chased with rococo scrollwork; 18 3/4 and 15 1/2 in.

Estimate: \$ 500.00 - \$ 700.00



Lot #132: ENGLISH RED-GROUND TORTOISESHELL VENEERED BOX

The hinged lid with chamfered edges, the plain case on ivory ball feet; 2 1/2 x 6 1/4 in.

Estimate: \$ 700.00 - \$ 900.00



Lot #133: FRENCH WALLPAPER FRAGMENT

8 ft. 1/2 in. x 6 ft. 3 1/2 in., laid down on paper backing.

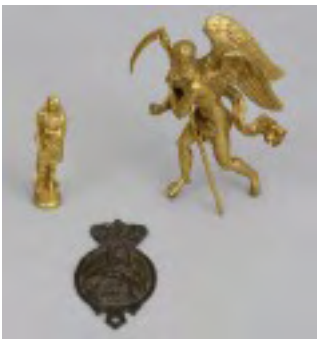
Estimate: \$ 400.00 - \$ 600.00



Lot #134: GILT BRONZE FIGURE OF LORENZO DE MEDICI, AFTER MICHELANGELO AND TWO BUSTS

The figure, a reduction of that in the Laurencian Library, the first bust Sevres bisque of Marie Antoinette, impressed Le Courneur, the other cast metal, on a pedestal with rondel of crowned eagle; 5 1/4 to 8 3/4 in.

Estimate: \$ 250.00 - \$ 450.00



Lot #135: TWO GILT-METAL FIGURAL ARTICLES AND A RELIEF-CAST MOUNT

The 2, a seal modeled as a 17th c. gentleman or a clock mount, the oval mount modeled with a hooded figure and a boar's head, beneath a pierced crown; 3 3/4 to 6 1/4 in. x 1 to 4 1/4 in.

Estimate: \$ 300.00 - \$ 400.00



Lot #136: BAROQUE-STYLE PAINTED AND GILT-METAL PILLAR CLOCK

The enamel dial within floral wreath beneath the breakarch crest raised on spiral reeded columns, the base with pendant foliate border; 19 x 12 x 4 3/4 in.

Estimate: \$ 500.00 - \$ 700.00



Lot #137: LARGE ROCK CRYSTAL SPECIMEN AND THREE DECORATIVE MARBLE OBELISKS

The largest obelisk on veined marble pedestal and verde antico base, the quartz specimen with pentagonal point; 7 1/2 to 15 in.

Estimate: \$ 400.00 - \$ 600.00



**Lot #138: LARGE NEOCLASSICAL
CARVED MARBLE OBELISK ON
BERLIN PORCELAIN PEDESTAL**

The flared sides fitted with alabaster pyrimidical top, the rococo-style pedestal modeled with shell-tip cartouches and bell-flower socles; 20 5/8 x 6 1/4 in.

Estimate: \$ 400.00 - \$ 600.00



**Lot #139: MORESQUE GILT-METAL
MOUNTED ALABASTER
THERMOMETER AND MATCHING
BAROMETER**

Each contained in a turret-form case with pointed shield mounts beneath an onion dome, the stem with pilasters and pierced lambrequin band, button feet; 15 x 5 x 4 1/2 in.

Estimate: \$ 800.00 - \$ 1200.00



**Lot #140: RENAISSANCE-STYLE GILT-
METAL MOUNTED MAROON-GROUND
ENAMELED-CERAMIC CLOCK**

The 3 3/4 in. chapter ring within egg-and-dart surround and flanked by dragons, the ovoid case with enameled flowers and griffen handles beneath beaker neck also with griffens, dome cover and leaf and cabochon feet; 37 1/4 x 15 1/2 in.

Estimate: \$ 1000.00 - \$ 1500.00

[To Top](#)

[Back](#)

[Next](#)

Lots 141 - 150



Lot #141: PAIR OF ITALIAN CARVED MARBLE AND SCAGLIOLA BUSTS OF BLACKAMOORS

The man bearded with tassled cap and draped cloak, the woman with scagliola striped scarf and specimen marble cloak; losses to inset marble; 20 and 19 1/2 in.

Estimate: \$ 1000.00 - \$ 1500.00



Lot #142: NEOCLASSICAL-STYLE MARBLE THREE-PART PEDESTAL

With Carrara marble top and base, and veined violet marble shaft; chips to white rim; 46 3/4 in., diam of top: 14 in., diam. of base: 14 1/2 in.

Estimate: \$ 600.00 - \$ 800.00



Lot #143: LOUIS PHILIPPE GILT-BRONZE FIGURAL MANTEL CLOCK

The 3 1/2 in. face within a rockwork case centered by the figure of a youth gazing at a barefoot nymph, the base with panel relief cast with mask head and vases; 21 1/2 x 15 1/2 x 7 1/2 in.

Estimate: \$ 700.00 - \$ 1000.00



Lot #144: CHARLES X ORMOLU-MOUNTED BLACK MARBLE PILLAR CLOCK

The enameled dial, signed, "Blanc Fils Rue Honore No 34," within drapery-hung surround, on Ionic columns surmounted by foliate and anthemion mounts, the base on leaf-capped lion's paw feet; mounts lacking to upper right; 21 x 11 x 6 1/4 in.

Estimate: \$ 500.00 - \$ 800.00



Lot #145: CHINESE GLAZED POTTERY ELEPHANT-FORM GARDEN SEAT

The oblong octagonal saddle seat above relief-molded side flaps, on black-ground base; 21 3/4 x 24 in.

Estimate: \$ 500.00 - \$ 1000.00



Lot #146: PAIR OF CHINESE CLOISSONNÉ VASES

Each cylindrical bowl with 2 panels of ducks or cranes amidst lotus blooms, on a lattice ground with ribbon-bound floral branches; 21 in., 18 in. diam. Provenance: Property from the collection of Gordon Getty.

Estimate: \$ 1000.00 - \$ 2000.00



Lot #147: CAST IRON URN WITH PINK MARBELIZED SURFACE

The squat reeded bowl with beaded rim and foot; 11 3/4 in., 11 in. diam.

Estimate: \$ 200.00 - \$ 300.00



Lot #148: PAIR OF CAST IRON PAINTED FINIALS

28 1/2 in. x 8 ft.

Estimate: \$ 500.00 - \$ 700.00



Lot #149: JAPANESE BRONZE MASSIVE VASE

The tripod bowl applied with song birds and bamboo shoots, flanked by peacocks, the neck with bamboo reserves, grotesque mask headed legs resting on a circular base; 32 1/2 x 19 in.

Estimate: \$ 600.00 - \$ 800.00



Lot #150: BERLIN BLACK LACQUER FAIENCE JAR AND COVER

The baluster-form bowl with chinoiserie scene of a figure peering out of the door of a garden pavilion, flanked by rockwork in relief and other figures, the cover with hen knop; approx. 28 1/2 x 12 in.

Estimate: \$ 1000.00 - \$ 2000.00

[To Top](#)

[Back](#)

[Next](#)

Lots 151 - 160



Lot #151: PAIR OF FRENCH CLOISONNÉ-MOUNTED GREEN ONYX MANTEL VASES

Each ovoid bowl with leaf-modeled scroll handles, beneath a turquoise-ground beaker neck, the short flared stem on shaped base with finials; 12 3/4 x 5 3/4 in.

Estimate: \$ 400.00 - \$ 600.00



Lot #152: PAIR OF BLUE AND WHITE DELFT VASES

Each baluster-form bowl with figural scenes of a man with a fan and lion or 2 men amidst rockwork, below tapered necks with swelling top and flared rim; 12 7/8 x 6 in.

Estimate: \$ 1000.00 - \$ 1500.00



Lot #153: ENGLISH PORCELAIN TEA SERVICE

In the Japan pattern, comprising: 12-8 3/4 in. plates; 1-14 3/4 in. oval fruit bowl; 2-10 3/4 in. oval dishes; 1-10 1/2 in. oval dish; 1-11 1/4 in. oval dish; 2 shell-form dishes and 2-7 1/2 in. sauce tureens and stands. Provenance: Stair & Co., NY.

Estimate: \$ 2000.00 - \$ 3000.00



Lot #154: TWELVE SPODE COPELAND PORCELAIN SOUP PLATES

Retailed by Tyndale & Mitchell, Philadelphia; each serpentine gilt gadroon rim and cobalt blue lobed border enclosing iron red floral swags; 10 1/2 in. diam.

Estimate: \$ 300.00 - \$ 500.00



Lot #155: ENGLISH PORCELAIN PART DINNER SERVICE IN THE FAMILLE ROSE PALETTE

Comprising 36-10 in. plates; 24-8 3/4 in. plates; 10-9 7/8 in. soup plates; 17 graduated platters, 9 1/4 to 22 1/2 in.; 1-13 3/4 in. 2-handled tureen and cover and 1-15 3/4 in. stand; 2-12 1/4 in. oval vegetable dishes and covers; 2-7 1/2 in. sauce tureens and covers; 2-8 1/4 in. stands and 1-10 1/2 in. stemmed fruit compote; 96 pieces.

Estimate: \$ 1500.00 - \$ 2000.00



Lot #156: TWELVE MINTON HAND-PAINTED CHINA FISH PLATES

Retailed by D.B. Bedell & Co., N.Y., depicting various fish, identified on reverse, most signed by W. Merpith; 9 in. diam.

Estimate: \$ 700.00 - \$ 1000.00



Lot #157: ENGLISH PORCELAIN SCENIC DESSERT SERVICE

Comprising 18-9 1/2 in plates; 4-9 3/4 in. footed single-handled plates; 2-14 in. 2-handled red footed plates; 2-12 in. oval 2-handled footed plate and 1-15 in. stemmed compote, variously depicting rural scenes, within blue and yellow borders; 27 pieces.

Estimate: \$ 500.00 - \$ 800.00

**Lot #158: ENGLISH IRONSTONE
EXTENSIVE DINNER SERVICE IN A
JAPAN PATTERN**



Comprising 26-10 1/2 in. plates; 19-9 in. plates; 12-10 in. soup plates; 14 graduated platters, 10 1/2 to 21 in.; 1-20 1/4 in. well-and-tree platter; 1-12 1/2 in. oval meat dish strainer; 1-11 1/4 in. stemmed fruit compote; 1-13 1/4 in. 2-handled tureen and cover and 1-13 in. scalloped stand; 76 pieces.

Estimate: \$ 2000.00 - \$ 3000.00

**Lot #159: GROUP OF TEN BLACK
BASALTES TABLE ARTICLES**



Comprising a 3-piece tea set with relief-molded milking scenes, 2 teapots, a coffee pot with basketweave surface, a creamer, a covered sugar bowl and a Wedgwood beaker, dated 1929; 2 1/2 to 6 1/2 in.

Estimate: \$ 400.00 - \$ 600.00

**Lot #160: PAIR OF PARIS PORCELAIN
MANTEL VASES**



Each of oval section with gilt-edged scalloped rim and tapered sides centering a figural scene of a boy or a girl, shell and scroll-molded foot; 8 3/4 x 9 1/4 in.

Estimate: \$ 500.00 - \$ 700.00

[To Top](#)

[Back](#)

[Next](#)

Lots 161 - 170



Lot #161: PARIS PORCELAIN TUREEN, COVER AND STAND AND LATER GILT-METAL LINER

The ovoid bowl with swan head handles, flanking floral clusters and gilt husks on a cobalt ground above relief-molded acanthus band, the cover with gilt-metal knob, conforming stand, the 2-tier liner pierced and with later brass pineapple knob; 12 x 18 in.

Estimate: \$ 800.00 - \$ 1200.00



Lot #162: PARIS PORCELAIN SIXTEEN-PIECE COFFEE SERVICE

Comprising 2 graduated pots, creamer, covered sugar bowl and 6 cups and saucers, each with rustic scenes of turreted buildings and figures, within gilt surrounds; 3 3/4 to 9 3/4 in.

Estimate: \$ 800.00 - \$ 1200.00



Lot #163: ASSEMBLED GROUP OF HEREND PORCELAIN TABLE ARTICLES

Comprising 1-12 in. tureen; 2-15 in. stands; 12-11 in. dinner plates; 12-9 1/2 in. soup plates; 11-8 3/4 in. lunch plates, all in Italian fruit pattern, and 12-11 in. dinner plates; 2-10 1/2 in. lunch plates and 10-6 in. butter plates, in the Rothschild bird pattern, and 1-19 3/4 in. 2-handled platter; 1-21 3/4 in. platter in the Queen Victoria pattern and 6 Meissen 7 in. plates; 70 pieces. Provenance: From the estate of Margaret Truman-Daniel.

Estimate: \$ 800.00 - \$ 1200.00

Lot #164: DOCCIA PORCELAIN COFFEE POT, A GERMAN PORCELAIN POT AND A MEISSEN VASE



The first of pear-form with floral sprigs, bracket spout and s-scroll handle, top-form knob, the second with fruit clusters and floral knobs, the vase with 2 bird panels, c-scroll handles and applied flowers and fruit; 7 3/4 to 9 1/4 in.

Estimate: \$ 300.00 - \$ 500.00

Lot #165: GROUP OF SEVEN CONTINENTAL GLAZED CERAMIC TABLE ARTICLES



Comprising a Doccia charger with iron red, blue, purple and green floral sprays, an oval platter with pink rose heads, 2 plates, an oval salt, a blue and white platter (restored) and a peacock plate (restored); 4 to 15 in.

Estimate: \$ 400.00 - \$ 600.00

Lot #166: PAIR OF PARIS PORCELAIN CAMPANI-FORM VASES



Each 2-handled bowl with everted gilt rim and loop handles and a continuous scene of cottage by a lake, set into green marbelized bases; 9 3/4 x 5 3/4 in.

Estimate: \$ 500.00 - \$ 700.00

Lot #167: PAIR OF DRESDEN PORCELAIN GOLD-GROUND VASES



Each ovoid bowl with 2 rustic scenes of cottages or mountains, flanked by winged swan's head handles, square bases, marked Dresden; 13 1/4 x 7 1/2 in.

Estimate: \$ 500.00 - \$ 700.00



**Lot #168: SITZENDORF PORCELAIN
FLORAL-ENCRUSTED LARGE URN,
COVER AND STAND**

The inverted bell-form bowl with floral reserves flanked by bifurcated c-scroll handles, the pierced cover with floral knob and the stand with sprigs, on c-scroll feet; 38 3/4 x 18 in.

Estimate: \$ 2000.00 - \$ 3000.00



**Lot #169: PAIR OF MEISSEN
PORCELAIN FLORAL ENCRUSTED
VASES AND COVERS**

Each inverted bell-form bowl encrusted with 5 petaled blossoms and applied with song birds perched on flowering branches, each dome cover with parrot atop cherries and floral branches, underglaze blue crossed swords mark; approx. 22 1/4 x 12 1/2 in.

Estimate: \$ 2500.00 - \$ 3500.00



**Lot #170: PAIR OF CONTINENTAL
PORCELAIN VASES**

Each ovoid cobalt ground with 2 etched gilt rondels depicting the muses of painting, sculpture, architecture and writing, the husk and foliate raised handles with coiled serpents, the bell-form base on porphyry stand; 18 1/4 x 8 in.

Estimate: \$ 3000.00 - \$ 5000.00

[To Top](#)

[Back](#)

[Next](#)

Lots 171 - 180



Lot #171: PAIR OF PARIS PORCELAIN MANTEL VASES

Each ovoid bowl with 2 grisaille views of Roman ruins, within gilt surrounds, flanked by gilt winged swan's head handles; 11 5/8 x 6 in.
Estimate: \$ 1000.00 - \$ 1500.00



Lot #172: GOTHIC-STYLE PORCELAIN- MOUNTED GILT-METAL MANTEL CLOCK

The 4 in. dial within a pointed arch case with pierced crest, on canted free-standing columns, with gold ground front panel depicting equestrians, and 4 lateral military trophy panels, on stepped feet; 19 1/4 x 10 3/4 x 6 1/2 in.
Estimate: \$ 2000.00 - \$ 3000.00



Lot #173: CHINESE EXPORT PORCELAIN ROSE MEDALLION FRUIT BOWL

Angular tapered bowl with notched corners, the exterior with continuous scene of ladies at garden pursuits, beneath bird and floral border; 5 x 10 1/2 in.
Estimate: \$ 2000.00 - \$ 3000.00



Lot #174: TWO CANTON BLUE AND WHITE GRADUATED HEXAFOIL BOWLS

Each with typical lake side view within lattice surround and outer border; 3 in., 8 3/8 in. diam. and 3 1/4 in. and 9 5/8 in. diam.

Estimate: \$ 2000.00 - \$ 3000.00



Lot #175: CONTINENTAL SILVER-ON-BRASS BASIN

The monogrammed bowl within pierced vine and putti border, repoussé with paired putti each holding a goose eating fruit; 2 3/4 in., 16 3/4 in. diam. Provenance: From the estate of Fernando Sanchez.

Estimate: \$ 200.00 - \$ 400.00



Lot #176: PAIR OF REGENCY TOLE PEINTE CHESTNUT URNS AND COVERS

Each tapered bowl with gilt lion-head ring drop handles and identical scene of shepherd with cows and sheep and a milk maid, oval bases; 12 1/2 x 7 x 4 1/2 in.

Estimate: \$ 800.00 - \$ 1200.00



Lot #177: CHINESE FOUR-PIECE CANTON ENAMEL-MOUNTED PEWTER GARNITURE

Comprising a large urn with fu dog cover and separate stand and a pair of candlesticks, variously fitted with figural, butterfly and flower plaques, some replaced with reverse paintings on glass and plastic; 31 1/2 x 9 1/2 x 7 in., candlesticks: 23 x 6 in.

Estimate: \$ 800.00 - \$ 1200.00



**Lot #178: CHINESE EXPORT ROSE
MEDALLION PUNCH BOWL**

Interior with figure panels spaced by bird and peony panels; 6 3/4 in., 16 in. diam.

Estimate: \$ 800.00 - \$ 1200.00



**Lot #179: PAIR OF MASSIVE CHINESE
BLACK-GROUND CLOISONNÉ
MASSIVE VASES**

Each of baluster form richly decorated with birds and butterflies amidst chrysanthemums, the sloping shoulder with 8 alternating yellow or sky blue floral reserves, beneath phoenix neck; 40 in., approx. 14 in. diam.

Estimate: \$ 2000.00 - \$ 3000.00



**Lot #180: JAPANESE TERRACOTTA-
GROUND CLOISONNÉ MASSIVE VASE**

Of baluster form, decorated with a bird perched on a blossoming prunus tree, above early summer blooms; 35 1/4 in., 12 1/2 in. diam.

Estimate: \$ 800.00 - \$ 1200.00

[To Top](#)

[Back](#)

[Next](#)

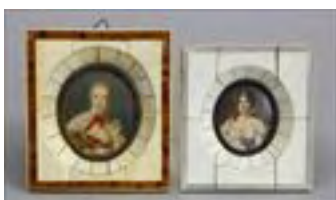
Lots 181 - 190



Lot #181: TWO WATERCOLOR PORTRAITS ON IVORY AND A GERMAN PORCELAIN MINIATURE PORTRAIT

The one rectangular, depicting a princess, the other circular of Marie Antoinette, gilt-metal frame, the porcelain oval of Princess Louise, in giltwood frame, fitted into tooled leather case; 4 x 3 1/4 in. to 5 1/2 x 4 in.

Estimate: \$ 200.00 - \$ 400.00



Lot #182: TWO PAINTED OVAL PORTRAITS ON IVORY

The one depicting Madame de Pompadour holding a key, signed Bourlyn, in tortoiseshell and ivory frame, the other an Empire girl, in ivory frame with engraved diagonal stripes; 4 3/8 x 3 7/8 in. and 4 x 3 5/8 in.

Estimate: \$ 150.00 - \$ 250.00



Lot #183: CONTINENTAL GLAZED EARTHENWARE FIGURE GROUP: MOTHER AND CHILD

Modeled as a 16th c. lady of fashion, wearing a plumed hat and chain-belted gown, holding a child in her arm and playing with his hands; 36 1/2 x 13 x 9 in.

Estimate: \$ 700.00 - \$ 1000.00



Lot #184: STAFFORDSHIRE FIGURE OF MINERVA AND AN ENAMEL BOX

The figure holding a torch above helmet, quiver of arrows and other weapons, the circular box with grid-pattern yellow lid centering a pink rose bud, opening to a mirror on the reverse; 8 x 3 in. and 1 1/8 x 1 7/8 in.

Estimate: \$ 200.00 - \$ 300.00



Lot #185: SIX CONTINENTAL PORCELAIN FIGURES

Comprising a Furstenburg barefoot boy blacksmith, a peasant woman with a fish and pan, a girl with a basket of flowers on her head, a Meissen girl jester and a Naples pair of a girl with a guitar and a youth with a recorder.

Estimate: \$ 200.00 - \$ 400.00



Lot #186: PAIR OF CONTINENTAL IVORY-GLAZED PORCELAIN GROUPS AND FOUR PORCELAIN FIGURES

The pair each incorporating 3 classical figures on circular greek key fret base, together with ivory-glazed figure of summer, a figure from commedia del arte, a Naples girl holding border of apron and a Naples blackamoor with camel; 2 5/8 to 9 1/4 in.

Estimate: \$ 250.00 - \$ 350.00



Lot #187: KPM PORCELAIN PLAQUE: CHERUB PLAYING A MANDOLIN

Inscribed Vienna lower left and impressed KPM beneath a scepter on the reverse, framed; 8 1/4 x 6 1/8 in.

Estimate: \$ 1500.00 - \$ 2500.00



Lot #188: CONTINENTAL HAND-PAINTED PORCELAIN CABINET PLATE

Signed Dieriel, showing an 18th c. beauty in the manner of Gainsborough, gilt cavetto and bleeding heart and lattice bands; 9 1/2 in. diam.
Estimate: \$ 400.00 - \$ 600.00



Lot #189: TWO CONTINENTAL HAND-PAINTED PORCELAIN CABINET PLATES

The one Vienna, titled "Mildred," and signed by Dietz, the other Haviland & Co. Limoges, titled "Fleurs Ecloses," signed by E. Furland, showing a maiden with pink sash, within gilt highlighted cobalt border; 9 1/2 and 9 1/4 in. diam.

Estimate: \$ 300.00 - \$ 400.00



Lot #190: PAIR OF CHELSEA GOLD ANCHOR MARK FIGURAL BOCCAGE CANDLESTICKS

Modeled as Minerva with raised left arm and flanked by a shield and an owl, or Jupiter holding a sword and flanked at the right by a cock; 11 3/4 x 8 in. and 11 1/4 x 7 3/4 in.

Estimate: \$ 400.00 - \$ 600.00

[To Top](#)

[Back](#)

[Next](#)

Lots 191 - 200



Lot #191: PAIR OF DERBY PORCELAIN POTPOURRI AND COVERS

Each hemispherical cobalt bowl with pierced border and 3 ram's head handles spaced by 3 floral reserves on tripod feet and covers with pomegranate knobs; 11 1/4 in., 10 in.

Estimate: \$ 1500.00 - \$ 2500.00



Lot #192: TWO MAJOLICA LEAF-FORM DISHES AND TWO PLATES

One impressed Etruscan Majolica: the 2 plates impressed 33 with overlapping leaves; 9 and 9 3/4 in., 8 1/4 in. diam.

Estimate: \$ 200.00 - \$ 300.00



Lot #193: TWO PAIRS OF WEDGWOOD GREEN-GLAZED POTTERY CAKE PLATES

Impressed marks and OPV: the larger 2-handled baskets centering grape leaves and chrysanthemum heads, the other with leaves and berries on woven ground; 10 3/4 and 10 1/2 in.

Estimate: \$ 400.00 - \$ 600.00



Lot #194: PAIR OF WEDGWOOD GREEN-GLAZED POTTERY CABBAGE LEAF PLATES

Impressed mark and COV O: each leaf on basketweave ground; 8 in.

Estimate: \$ 100.00 - \$ 200.00



**Lot #195: ASSEMBLED SET OF FOUR
TURQUOISE-GLAZED GRAPE PLATES**

Variously marked, one with JG monogram:
each relief-decorated with green leaves and
ferns, within ochre edges; 8 1/2 in. diam.

Estimate: \$ 100.00 - \$ 200.00



**Lot #196: PAIR OF MAJOLICA GRAPE
LEAF PLATES**

Unmarked, each with green and brown-stained
leaf on basketweave ground; 9 in. diam.

Estimate: \$ 150.00 - \$ 250.00



**Lot #197: MAJOLICA GRAPE LEAF
MOLDED PLATE**

Unmarked, in shades of green, yellow and
brown; 7 3/4 in. diam.

Estimate: \$ 200.00 - \$ 300.00



**Lot #198: PAIR OF ETRUSCAN
MAJOLICA GRAPE LEAF PLATES**

Impressed rondel mark; with yellow-tipped or
pink-tipped leaf on brown or pink basketweave
ground; 7 3/4 in. diam.

Estimate: \$ 300.00 - \$ 400.00



**Lot #199: FOUR WEDGWOOD DAPPLE-
GLAZED POTTERY SHELL-FORM
PLATES AND A SINGLE PLATE**

Impressed MTV marks and AUU for 1866: the
single also dappled in shades of blue and
brown; 8 3/8 in.

Estimate: \$ 300.00 - \$ 500.00



**Lot #200: WEDGWOOD POTTERY
SHELL DISH AND TWO LEAF DISHES**

Impressed Wedgwood, No C and L: in tones of green and brown, together with green-glazed leaf-molded 2-handled plate and a pink, yellow, turquoise and green dish; 9 to 11 1/2 in.

Estimate: \$ 150.00 - \$ 250.00

[To Top](#)

[Back](#)

[Next](#)