

Lots 201 - 210



Lot #201: SARREGUEMES FAIENCE CONCH SHELL WALL CISTERN AND COVER

With underglaze black mark and impressed 522 and L74: the tapered fluted bowl with pink, green and yellow bands and relief molded with green aquatic leafage, and with lead spigot, the cover conforming; 17 1/2 x 12 1/2 x 7 1/4 in.
Estimate: \$ 800.00 - \$ 1200.00



Lot #202: RENAISSANCE-STYLE MAJOLICA OVAL FOOTED CENTERPIECE

The central tortoiseshell-glazed recess within a border relief-decorated with cornucopia, oval cartouches and lobed medallions, egg-and-dart rim; 2 1/4 x 14 in.
Estimate: \$ 500.00 - \$ 700.00



Lot #203: PAIR OF ETRUSCAN MAJOLICA SHELL-FORM DISHES

Impressed rondel mark: each with 8 pink-tipped overlapping shells centering green marine plants; 5 1/2 in. diam.
Estimate: \$ 50.00 - \$ 75.00



Lot #204: MAJOLICA LOBSTER PLATE
Realistically modeled with the lobster on sandy ground within shell and marine plant border, impressed 1160; 2 1/4 in., 10 1/4 in. diam.
Estimate: \$ 800.00 - \$ 1200.00



Lot #205: PAIR OF MAJOLICA OYSTER PLATES

Unmarked, each with alternating pink and ivory recess spaced by coral branches, centering a cobalt butter recess; 10 in. diam.

Estimate: \$ 300.00 - \$ 500.00



Lot #206: ETRUSCAN MAJOLICA SHELL CENTERPIECE

Modeled with 8 pink, green and brown overlayed oyster shells centered by green aquatic leaves, impressed rondel mark; 13 3/4 x 9 1/4 in.

Estimate: \$ 150.00 - \$ 250.00



Lot #207: MAJOLICA TORTOISESHELL-GLAZED TEN-LOBED BOWL

In tones of green, yellow and brown; 3 3/8 in., 10 1/2 in. diam.

Estimate: \$ 200.00 - \$ 300.00



Lot #208: MAJOLICA LOBSTER PLATE

Realistically rendered on sandy base surrounded by shells and marine plants, unmarked; 3 in., 11 1/2 in. diam.

Estimate: \$ 2000.00 - \$ 4000.00



**Lot #209: TWO SIMILAR MAJOLICA
FISH-FORM WATER PITCHERS AND A
MILK JUG**

Unmarked, the 2 molded as leaping with open mouths, the last with green grape clusters in relief on faux bois ground; 7 1/4 to 10 1/4 in.
Estimate: \$ 150.00 - \$ 250.00



Lot #210: MAJOLICA LOBSTER PLATE
Realistically modeled with the lobster on sandy ground, within mussel, clam and marine plant surround, unmarked; 2 7/8 in., 13 in. diam.
Estimate: \$ 2500.00 - \$ 4500.00

[To Top](#)

[Back](#)

[Next](#)

Lots 211 - 220



Lot #211: PAIR OF MAJOLICA OYSTER PLATES

Unmarked, with alternating pink and green recesses centering cobalt sauce recess, on fish roe ground; 10 in. diam.

Estimate: \$ 300.00 - \$ 400.00



Lot #212: PAIR OF MAJOLICA TURQUOISE-GROUND OYSTER PLATES

Unmarked, each recess spaced by marine branches; 9 1/4 in. diam.

Estimate: \$ 200.00 - \$ 400.00



Lot #213: SET OF FOUR MINTONS TURQUOISE-GROUND OYSTER PLATES

Impressed factory and registry marks, the recesses spaced by conch and clam shells centering claw shell and bead enclosed green sauce recesses.

Estimate: \$ 600.00 - \$ 800.00



Lot #214: FOUR MINTONS MAJOLICA OYSTER PLATES

Each with impressed factory and registry marks, each 6-part plate with dappled recesses spaced by conch and clam shells, centering clam shells and bead sauce recess; 9 in. diam.

Estimate: \$ 500.00 - \$ 700.00



**Lot #215: PAIR OF CONTINENTAL
PORCELAIN OYSTER PLATES**

Each with scalloped rim and painted with pansies centering an 8-petal flowerhead; 8 in. diam.

Estimate: \$ 300.00 - \$ 500.00



**Lot #216: PALISSYWARE-STYLE
FAIENCE OVAL BASIN**

Relief molded with Venus and Cupid and 4 putti, within a border with mask heads spaced by circular and oval depressions; 2 7/8 x 19 1/2 x 16 in.

Estimate: \$ 800.00 - \$ 1200.00



**Lot #217: CONTINENTAL SCHOOL
(19TH C.): LANDSCAPE WITH FIGURES**

Reverse painting on glass, ebonized and parcel-gilt frame; image: 18 1/4 x 20 1/4 in., frame: 23 1/2 x 25 1/2 in.

Estimate: \$ 400.00 - \$ 600.00



**Lot #218: CONTINENTAL SCHOOL:
PAIR OF OVAL PORTRAITS OF
GENTLEMEN**

Oil on canvas, contained in baroque-style carved giltwood frames; extensive losses to one frame; 10 1/2 x 8 1/2 in.

Estimate: \$ 500.00 - \$ 800.00



**Lot #219: ITALIAN SCHOOL: MARY
AND THE CHRIST CHILD**

Oil on canvas, 15 3/4 in. diam., unsigned.

Estimate: \$ 1000.00 - \$ 1500.00



**Lot #220: EUROPEAN SCHOOL:
PORTRAIT OF A SAINT**

Oil on copper, 7 x 5 5/16 in. Provenance: The collection of Fernando Sanchez.

Estimate: \$ 700.00 - \$ 900.00

[To Top](#)

[Back](#)

[Next](#)

Lots 221 - 230



**Lot #221: FOLLOWER OF RAPHAEL:
THE TRANSFIGURATION**

Oil on copper, 13 1/2 x 9 1/2 in., unsigned.

Estimate: \$ 3000.00- \$ 4000.00



**Lot #222: MANNER OF FRA
BARTOLOMEO: HOLY FAMILY**

Oil on canvas, relined, 14 5/8 x 9 7/8 in.

Estimate: \$ 500.00 - \$ 700.00



**Lot #223: MANNER OF FRA
BARTOLOMEO: MADONNA AND
CHILD**

Oil on wood panel, 15 1/8 x 13 1/4 in.

Estimate: \$ 400.00 - \$ 600.00



**Lot #224: FOLLOWER OF GIOVANNI
SALVI: MADONNA AND CHILD**

Oil on canvas, relined, 32 x 25 5/8 in., unsigned.

Estimate: \$ 3000.00 - \$ 4000.00



Lot #225: ITALIAN SCHOOL: JESUS, MARY, JOHN, ANNE AND THE LAMB

Oil on canvas, 27 3/4 x 21 1/2 in.

Estimate: \$ 2000.00 - \$ 4000.00



Lot #226: MANNER OF G.G. DAL SOLE: CHRIST AND THE SAMARIAN WOMAN

Oil on wood panel, 8 1/8 x 10 3/8 in.

Estimate: \$ 300.00 - \$ 500.00



Lot #227: EUROPEAN SCHOOL: THE INFANT JESUS SUCKLING

Oil on panel, 43 1/4 x 36 3/4 in., bearing initials lower left, PPR. Panel split and separated in three places.

Estimate: \$ 300.00 - \$ 500.00



Lot #228: MANNER OF FERNANDO SOTOMAYER (1875-1960): TWO WOMAN PRAYING

Oil on canvas, 34 1/2 x 26 1/2 in., unstretched; bearing signature lower right.

Estimate: \$ 300.00 - \$ 500.00



Lot #229: EUROPEAN SCHOOL: PORTRAIT OF A YOUNG WOMAN

Oil on canvas, relined, 14 1/8 x 10 3/8 in. (oval), in an Italian-style gilded corner frame.

Estimate: \$ 800.00 - \$ 1200.00



**Lot #230: EUROPEAN SCHOOL:
CHARLES II**

Oil on cradled panel, 13 /8 x 10 in.

Estimate: \$ 700.00 - \$ 900.00

[To Top](#)

[Back](#)

[Next](#)

Lots 231 - 240



**Lot #231: ADOLF HENNING (1809-1900):
PORTRAIT OF A GENTLEMAN**

Oil on canvas, 12 x 10 in., signed, dated and inscribed lower left, A. Henning/Berlin/1848.
Estimate: \$ 800.00- \$ 1200.00



**Lot #232: ATTRIBUTED TO JOHN
HOPPNER: PORTRAIT OF LADY**

Oil on canvas, 30 x 25 in., signed and dated lower right.
Estimate: \$ 1000.00 - \$ 1500.00



**Lot #233: BRITISH SCHOOL: "THOMAS
2ND LORD LILFORD"**

Oil on canvas, relined, 49 x 39 1/4 in.
Estimate: \$ 2000.00 - \$ 3000.00



Lot #234: BRITISH SCHOOL: FULL-LENGTH PORTRAIT OF A BOY

Oil on canvas, relined, 68 x 42 in., signed and dated G. Claussen 1912 lower right.

Estimate: \$ 1500.00 - \$ 3000.00



Lot #235: E. BARIÉ: LAWYER AND CLIENT

Oil on canvas, 21 3/4 x 27 in., signed lower right.

Estimate: \$ 800.00 - \$ 1200.00



Lot #236: CIRCLE OF DONDUCCI: BATTLE SCENE

Oil on canvas, relined, 12 1/2 x 20 1/2 in.

Estimate: \$ 1500.00 - \$ 2000.00



Lot #237: EUROPEAN SCHOOL: MERRYMAKING

Oil on canvas, relined, 9 5/8 x 12 7/8 in., unsigned.

Estimate: \$ 400.00 - \$ 600.00



Lot #238: FLEMISH SCHOOL: DAILY CHORES

Oil on wood panel; 12 x 15 1/2 in., unsigned.

Estimate: \$ 1000.00 - \$ 1500.00



**Lot #239: ITALIAN SCHOOL:
CONSULTING THE SYBIL**

Oil on canvas, 38 1/2 x 55 in.

Estimate: \$ 4000.00 - \$ 6000.00



**Lot #240: STYLE OF FRANCOIS
BOUCHER: VENUS AT THE FORGE OF
VULCAN**

Oil on canvas, relined, 18 x 21 5/8 in., unsigned.

Estimate: \$ 800.00 - \$ 1200.00

[To Top](#)

[Back](#)

[Next](#)

Lots 241 - 250



**Lot #241: FOLLOWER OF NICHOLAS
VLEUGHEL'S: TWO MUSES**

Oil on wood panel, 10 1/8 x 7 3/4 in., unsigned.

Provenance: Property from the Nasher Museum of Art at Duke University.

Estimate: \$ 1500.00- \$ 2000.00



**Lot #242: AMERICAN SCHOOL: MAIDEN
AND PUTTO**

Oil on wood panel, 12 x 16 in., signed lower left, N. Bingham.

Estimate: \$ 200.00 - \$ 300.00



**Lot #243: EUROPEAN SCHOOL: TETE A
TETE**

Oil on canvas, relined, 18 x 32 in., unsigned.

Estimate: \$ 1000.00 - \$ 1500.00



**Lot #244: MANNER OF DAVID TENIERS:
LEISURE TIME**

Oil on canvas, relined 16 x 11 3/4 in., unsigned.

Provenance: Property from the Nasher Museum of Art at Duke University.

Estimate: \$ 800.00 - \$ 1200.00



**Lot #245: LÉON CAILLE (1836-1907):
FAMILY GATHERING**

Oil on canvas, 28 7/8 x 39 1/2 in., signed and dated 1889 lower right.

Estimate: \$ 3000.00 - \$ 5000.00



Lot #246: EUROPEAN SCHOOL: WOMAN AND ANIMALS IN A LANDSCAPE

Oil on wood panel, 12 1/2 x 16 1/2 in.

Estimate: \$ 200.00 - \$ 300.00



Lot #247: EUROPEAN SCHOOL: EXPANSIVE LANDSCAPE

Oil on canvas, relined; 28 x 54 in.

Estimate: \$ 3000.00 - \$ 5000.00



Lot #248: CHARLES-EMILE JACQUE (1813-1894): LANDSCAPE WITH SHEEP AND SHEPHERD

Oil on wood panel, 13 1/4 x 9 3/4 in., signed lower right.

Estimate: \$ 2000.00 - \$ 3000.00



Lot #249: CHARLES-EMILE JACQUE (1813-1894): SHEPHERD AND SHEEP

Oil on wood panel, 12 3/4 x 10 1/8 in., signed lower left and inscribed and dated 1892 on verso.

Estimate: \$ 1800.00 - \$ 2200.00



Lot #250: ALBERT HENRI JON GOS (1852-1942): ALPEN LANDSCAPE

Oil on canvas, 32 x 25 3/4 in., signed twice lower right and center. Property sold to benefit the Brooklyn Museum.

Estimate: \$ 800.00 - \$ 1200.00

Lots 251 - 260



Lot #251: LANDSCAPE WITH LARGE TREES

Oil on canvas, 25 x 39 in., signed lower right.
Estimate: \$ 1000.00- \$ 1500.00



Lot #252: LOUIS CLESSE (1880-1961): CLOUDY SKY

Oil on masonite, 21 5/8 x 25 5/8 in., signed and dated 1946 lower right.
Estimate: \$ 1500.00 - \$ 2500.00



Lot #253: MANNER OF MICHAEL CARREE: ANIMALS GRAZING BY RUINS

Oil on canvas, 20 7/8 x 28 7/8 in. Provenance: Property from the Nasher Museum of Art at Duke University.
Estimate: \$ 1800.00 - \$ 2200.00



Lot #254: VILLAGE SCENE WITH WOMAN AND GEESE

Oil on canvas, relined, 23 1/2 x 31 1/2 in., signed lower right.
Estimate: \$ 1000.00 - \$ 1500.00



Lot #255: LANDSCAPE WITH TREES

Oil on canvas, 16 x 20 in., signed lower right.

Estimate: \$ 400.00 - \$ 600.00



**Lot #256: EUROPEAN SCHOOL:
MILKING TIME**

Oil on panel, 15 x 22 in., signed illegibly and dated 1852 lower right; 15 x 22 in.

Estimate: \$ 600.00 - \$ 800.00



**Lot #257: CONTINENTAL SCHOOL:
LANDSCAPE WITH FIGURES AND
ANIMALS**

Oil on panel, 18 3/4 x 25 1/2 in., unsigned.

Estimate: \$ 1500.00 - \$ 2500.00



**Lot #258: WOMAN WALKING
THROUGH A FIELD OF RED FLOWERS**

Oil on canvas, 21 x 31 in., signed lower left.

Estimate: \$ 2000.00 - \$ 3000.00



**Lot #259: ENDRE KOMAROMI-KACZ
(1880-1969): INTERIOR SCENE**

Oil on panel, 15 1/8 x 13 1/2 in., signed lower right.

Estimate: \$ 800.00 - \$ 1200.00



**Lot #260: EUROPEAN SCHOOL: STILL
LIFE WITH FRUIT AND TAZZA**

Oil on canvas, relined, 23 1/4 x 19 in.,
unsigned. Provenance: The collection of
Fernando Sanchez.

Estimate: \$ 1500.00 - \$ 2000.00

[To Top](#)

[Back](#)

[Next](#)

Lots 261 - 270



Lot #261: MANNER OF JACOB VAN HULSDONEK: NATURE MORTE AUX RAISINS

Oil on canvas, laid down on panel, 12 1/2 x 16 in., unsigned. Provenance: Property from the Nasher Museum of Art at Duke University.
Estimate: \$ 2000.00- \$ 4000.00



Lot #262: CONTINENTAL SCHOOL: STILL LIFE WITH FLOWERS

Oil on panel, 15 1/2 x 11 3/4 in. (sight), unsigned and with Hungarian export stamp on the backing.
Estimate: \$ 500.00 - \$ 800.00



Lot #263: MANNER OF FELIX ZIEM: VENICE

Oil on wood panel, 18 x 21 3/4 in., signed lower right.
Estimate: \$ 10,000.00 - \$ 15,000.00



Lot #264: RUSSIAN PAINTED WOOD ICON

Depicting the Virgin with attendants and mourners, beneath heavenly saints amidst clouds; 19 1/4 x 14 1/2 in.
Estimate: \$ 500.00 - \$ 800.00



**Lot #265: RUSSIAN PAINTED WOOD
ICON OF A SAINT**

Depicted standing in a gold-ground recessed niche, the bearded and hooded saint, wearing a maroon cloak and holding white beads, flanked at the base by an inscription and the date 1780; 9 1/4 x 6 1/2 in.

Estimate: \$ 300.00 - \$ 400.00



**Lot #266: RUSSIAN PAINTED WOOD
ICON**

Depicting Christ on a donkey with attendants entering Jerusalem, with kneeling and standing followers; 13 1/4 x 11 in.

Estimate: \$ 250.00 - \$ 450.00



**Lot #267: RUSSIAN PAINTED WOOD
ICON**

Centered by the Madonna and Child flanked by angels beneath God the Father and cherub heads, the base with 3 ecclesiastical saints, gilt highlights; 13 x 9 1/2 in.

Estimate: \$ 500.00 - \$ 800.00



**Lot #268: RUSSIAN PAINTED WOOD
ICON**

Centered by the Madonna and crowned Christ child, bordered by 14 scenes from the life of Christ from Annunciation to the Descent of the Holy Ghost; 20 x 15 1/4 in.

Estimate: \$ 600.00 - \$ 800.00



**Lot #269: RUSSIAN PAINTED WOOD
TRYPTYCH**

Centered by a breakarch panel of the Madonna and Child, the hinged doors depicting St. George and the Dragon, and St. George piercing the enemy; open: 10 x 13 3/4 in., closed: 10 x 7 in.

Estimate: \$ 200.00 - \$ 300.00



**Lot #270: BRONZE FIGURE OF THE
DANCING FAUN, AFTER THE ANTIQUE**

The nude god holding tympana, with right foot resting on a base; 21 1/2 in.

Estimate: \$ 1200.00 - \$ 1800.00

[To Top](#)

[Back](#)

[Next](#)

Lots 271 - 280



Lot #271: H. DUMAIGE: PAIR OF ALLEGORICAL SEATED FIGURES, AFTER THE ANTIQUE

Bronze, impressed H. Dumaige Scept.: each modeled on a cushioned stool, the one holding a book and a pen, the other a scroll, on rectangular stepped base; 15 1/2 x 8 3/8 x 7 5/8 in., 15 3/8 x 8 3/8 x 7 5/8 in.

Estimate: \$ 1000.00- \$ 1500.00



Lot #272: GILT-BRONZE FIGURE OF THETIS

Modeled seated at the edge of an anvil, with right foot resting on her helmet next to a shield, the base with incised title; 14 3/4 x 6 5/8 x 5 in.

Estimate: \$ 300.00 - \$ 500.00



Lot #273: GILT-BRONZE FIGURE OF PSYCHE

Modeled as a sandaled classical maiden seated on a triangular pedestal and holding an oil lamp and a quiver of arrows, on a breakfront black marble base centering "Psyche," 17 1/4 x 17 1/2 x 7 1/2 in.

Estimate: \$ 500.00 - \$ 700.00



**Lot #274: PAIR OF BRONZE
ALLEGORICAL FIGURES OF
CLASSICAL MAIDENS**

Each modeled barefoot, the one holding an oil lamp and a book inscribed "Scencia," the other holding a butterfly, with lyre at her feet, on black marble-mounted base; 19 in., 7 1/4 in. diam.

Estimate: \$ 400.00 - \$ 600.00



Lot #275: BRONZE FIGURE GROUP

Modeled as a reclining classical maiden resting her left hand on a lyre, flanked by a seated child holding a book, the base applied with gilt ribbon-bound husks; 11 1/2 x 17 1/2 x 6 in.

Estimate: \$ 300.00 - \$ 500.00



**Lot #276: THREE BRONZE FIGURES OF
CLASSICAL MAIDENS, AFTER THE
ANTIQUE**

The largest, impressed J. Clesinger, wearing a diadem and with hands holding necklace beads, the next with head bowed and holding a lyre, the last holding the rim of her shawl; 15 3/4, 17 1/4 and 18 in., 5 and 5 1/4 in. diam.

Estimate: \$ 600.00 - \$ 800.00



**Lot #277: FRENCH BRONZE FIGURE
GROUP**

Modeled as an eagle baring aloft a classical maiden holding an ewer and a tazza, on cloud swirl base; 12 x 8 1/2 in.

Estimate: \$ 400.00 - \$ 600.00



Lot #278: P. PONSARD: "CUPID"

Bronze patinated metal lamp stand, impressed name, modeled semi-nude, holding a bow, peering around a column, sheath of arrows at his feet; to capital: 16 7/8 x 7 1/2 in.
Estimate: \$ 300.00 - \$ 400.00



Lot #279: PEIFFER: "CLASSICAL MAIDENS"

Two bronze figures, with traces of gilding, impressed signature, each modeled standing, the one holding a fruit-filled cornucopium and a fruit-hung column and a cock, the other holding a baton and a pouch and flanked by a lion skin hung column and a peacock; 20 x 9 1/4 x 7 in. and 20 1/4 x 9 1/4 x 7 in.
Estimate: \$ 1200.00 - \$ 1800.00



Lot #280: E.E. CROFTS: CASSANDRA

Bronze, unsigned, with raised right arm, parted hair and open mouth, on stained walnut base applied with English silver plaque; 15 5/8 x 5 3/4 x 7 1/2 in.
Estimate: \$ 500.00 - \$ 800.00

[To Top](#)

[Back](#)

[Next](#)

Lots 281 - 290



Lot #281: H. DUMAIGE: "QUEEN DIDO"

Bronze, impressed signature, modeled seated on a swan stool, wearing a crenallated diadem, long earrings and matching necklace, oval base; 12 3/4 x 15 x 7 3/4 in.

Estimate: \$ 1000.00- \$ 1500.00



Lot #282: MOREAU: VENUS AND AMOR

Bronze, impressed signature: modeled as a kneeling barefoot Roman lady with chignon coiffure, embracing the standing figure of Amor, oval base; 12 1/2 x 14 x 5 1/2 in.

Estimate: \$ 500.00 - \$ 700.00



Lot #283: BRONZE GROUP: MOTHER AND SON

Modeled as an 18th c. cloaked female holding the tricorn hat of her son, circular base; 19 x 9 in.

Estimate: \$ 1000.00 - \$ 1500.00



Lot #284: CHRISTINE PLATTNER: GIRL WITH BABY

Bronze, impressed signature and dated 1901: modeled as a girl with a single braid struggling with a baby, raised on ebonized wood flared pedestal; 11 5/8 x 5 1/2 x 5 in.

Estimate: \$ 500.00 - \$ 800.00



Lot #285: L. GREGOIRE AND SASTANIERES: "LA FILLE" AND "LE GARCON"

Bronzes, impressed L. Gregoire or Sastanieres sculpt, she modeled with a wood-handled winnowing basket, he holding a fishing lure, next to a basket; 19 1/2 x 9 in. and 19 x 7 in.
Estimate: \$ 1000.00 - \$ 1500.00



Lot #286: E. LE GUILLERMIN: BUST OF A GIRL IN A BONNET

Gilt-bronze, impressed signature, modeled as a full-cheeked girl wearing bow-tied bonnet, impressed signature, veined red marble socle and base; 11 1/2 x 6 3/4 in.
Estimate: \$ 300.00 - \$ 500.00



Lot #287: A. PEIFFER: HEAD OF AN 18TH C. GIRL

Bronze, impressed signature: modeled with a lace cap and long curls gazing at a butterfly on her shoulder, waisted stem and square base, also impressed Boyer; 10 1/2 x 6 3/4 x 3 3/4 in.
Estimate: \$ 300.00 - \$ 500.00



Lot #288: FRENCH BRONZE BUST OF AN 18TH C. YOUTH

Impressed F. Barbedienne Fondateur: with parted long hair and wearing a jabot and a cloak over his left shoulder, ebonized wood base; 12 5/8 x 8 x 5 1/2 in.
Estimate: \$ 300.00 - \$ 500.00



**Lot #289: VAN DER STRAETON: BUST
OF AN 18TH C. LADY**

Bronze, impressed signature, the head turned to right, wearing a tricorn hat and ribbon choker, the bodice centered by a bow; 21 1/2 x 10 x 8 in.

Estimate: \$ 700.00 - \$ 1000.00



**Lot #290: "VOLTAIRE" AND
"ROUSSEAU"**

Bronze, each modeled standing and holding a walking stick, Voltaire with a scroll in his right pocket, Rousseau holding a scroll in his right hand; 12 3/4 and 12 in.

Estimate: \$ 500.00 - \$ 800.00

[To Top](#)

[Back](#)

[Next](#)

Lots 291 - 300



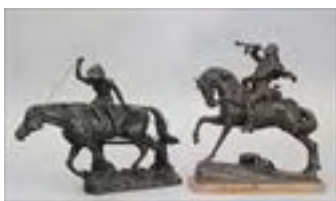
Lot #291: DUCHOISELLE: "RAPHAEL"

Bronze, impressed signature, the Renaissance artist modeled holding a sketch book and pen, standing next to an Ionic pillar flanked by a palette and brushes; 14 7/8 x 8 3/4 x 4 3/4 in.
Estimate: \$ 500.00- \$ 700.00



Lot #292: AFTER JEAN JULES B. SALMSON: PAIR OF BRONZES

Modeled as 18th c. artists, each with incised signature; 22 and 22 1/2 in.
Estimate: \$ 3000.00 - \$ 5000.00



Lot #293: TWO BRONZE EQUESTRIANS

The one, impressed with rubbed mark Henrick, of a 17th c. gentleman blowing a horn, on marble base, the other, impressed Ei fu, of a barefoot boy in a straw hat driving a cart horse; 13 1/2 x 11 1/2 in., 12 x 16 1/4 in.
Estimate: \$ 1000.00 - \$ 1500.00



Lot #294: Q. RUSSONY: "JOAN OF ARK"

Modeled in armor holding a sword and gazing upwards, on veined marble base, impressed signature; 22 1/2 in.
Estimate: \$ 700.00 - \$ 900.00



Lot #295: I. BOCSE: PAIR OF FIGURES OF KNIGHTS

Bronze, each with impressed signature and dated '84, each modeled as a 16th c. knight in armor, holding a lance and shield on circular molded base; 14 3/4 in., diam. at base: 4 3/4 in. Estimate: \$ 600.00 - \$ 800.00



Lot #296: PAOLO, PRINCE TROUBETZKOY: PORTRAIT HEAD OF A YOUNG BOY

Bronze, signed lower right below shoulder and dated 1915; 12 x 12 in. Estimate: \$ 3000.00 - \$ 5000.00



Lot #297: BRONZE-PATINATED METAL FIGURE OF A HIKER

Modeled walking, holding a shot gun and a pipe, with back pack topped by an axe, on cast stone base; 11 1/2 x 6 1/2 in. Estimate: \$ 300.00 - \$ 500.00



Lot #298: FRENCH BRONZE FIGURE : "ARCHER, ME SIECLE"

Unsigned bronze, modeled as a young man tightening his bow, a chained sheath of arrows suspended from his back, the circular base with title plaque; 25 x 12 in., 8 in. diam. of base. Estimate: \$ 2000.00 - \$ 4000.00



Lot #299: CHARLES ANFRIE: "LE BAYARD"

Bronze with impressed signature, modeled as a sailor carrying a hatchet and a rifle, wearing a cap inscribed, "Le Bayard," and gazing to the left with his hand screening his eyes; 17 x 10 1/2 x 7 in.

Estimate: \$ 700.00 - \$ 1000.00



Lot #300: AFTER P.J. MENE: EWE WITH LAMB

Iron cast, modeled with a lamb suckling a ewe with a bell around her neck, impressed signature and dated 1845; 5 3/4 x 9 in.

Estimate: \$ 300.00 - \$ 500.00



Lot #300A: AFTER ANTOINE-LOUIS BARYE: "RECUMBENT LIONESS"

Bronze, impressed signature, together with a patinated metal figure of a recumbent hound, indistinctly signed and a Gorham Co. bronze figure of a collie, impressed E.E. Codman; 3 1/8 x 7 1/4 in., 4 x 6 3/4 in. and 4 1/2 x 5 1/2 in.

Estimate: \$ 500.00 - \$ 700.00

[To Top](#)

[Back](#)

[Next](#)