

## Lots 301 - 310



### **Lot #301: TWO FRENCH BRONZE FIGURES OF GAME BIRDS**

The larger, a pheasant, impressed Birot, with bird amidst ferns gazing at a mouse, the other, impressed Pautrot, Paris 1879, with raised wings and displayed tail feathers, gazing downward; 12 1/2 x 15 1/2 in. and 11 1/2 x 11 1/2 in.

Estimate: \$ 700.00- \$ 1000.00



### **Lot #302: L. BUREAUD: PHEASANT**

Bronze, modeled on a rocky ledge, gazing upward above raspberry branches, impressed signature and, B. 1691 and set with medallion, "Societe des bronze de Paris;" 11 1/4 x 10 1/2 in.

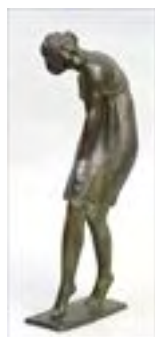
Estimate: \$ 400.00 - \$ 600.00



### **Lot #303: J. MOIGNIEZ: PHEASANT ON A STUMP WITH WEASEL**

Bronze, impressed signature: modeled with the left claw on a tree stump, gazing at the weasel emerging from the ground, oval molded base; 13 1/2 x 12 1/2 x 7 1/2 in.

Estimate: \$ 800.00 - \$ 1200.00



### **Lot #304: HOWARD: CECIL DE BLAQUERRE**

Bronze, impressed signature, modeled as a barefoot dancer with head bowed, wearing a knee-length skirt; 19 x 8 x 5 1/8 in.

Estimate: \$ 500.00 - \$ 800.00



**Lot #305: E. VILLANIS: "ESMERALDA"**

Bronze, incised signature: modeled as a barefoot gypsy girl holding a tambourine and playing cards, the base relief cast with the title; 18 x 6 1/2 x 4 in.

Estimate: \$ 1000.00 - \$ 1500.00



**Lot #306: MATHUIN MOREAU: "BATHER WITH PARASOL"**

Bronze, impressed Moreau Math Scpt: modeled in swimming costume, seated on a rocky ledge gazing down on a crab; 19 1/2 x 7 x 7 in.

Estimate: \$ 1000.00 - \$ 1500.00



**Lot #307: FRENCH ART NOUVEAU GILT-BRONZE BUST OF A MAIDEN**

Unsigned, the head turned to the right, wearing a diadem with sun burst front piece, rising from a tapered pedestal cast with sunflower stem, flared base; 22 x 11 x 4 7/8 in.

Estimate: \$ 800.00 - \$ 1200.00



**Lot #308: F. SAKADY: MONK GIVING PRAISE**

Bronze, impressed signature, black laminate stand; 13 5/8 in.

Estimate: \$ 550.00 - \$ 750.00



**Lot #309: ITALIAN RENAISSANCE-  
STYLE CARVED WALNUT STOOL**

The rectangular seat on trestles carved with mask heads and blind cartouches, joined by a turned stretcher; 16 1/2 x 18 1/2 in.

Estimate: \$ 400.00 - \$ 600.00



**Lot #310: PAIR OF BAROQUE-STYLE  
VERDIGRIS-PAINTED PAPIER MACHE  
LIONS ON WOOD PEDESTALS**

Each beast recumbent facing forward with growling mouth, each pedestal with raised notched panels, on flared plinth; 44 1/4 x 19 1/4 x 4 ft. 1 3/4 in.

Estimate: \$ 2000.00 - \$ 3000.00

[To Top](#)

[Back](#)

[Next](#)

## **Lots 311 - 320**



**Lot #311: PAIR OF ITALIAN BAROQUE  
CARVED WOOD ANGEL-FORM  
PRICKET STICKS, MOUNTED AS  
LAMPS**

Each wearing sandals and a belted tunic, holding a cornucopium arm with serpent tail, standing on rockwork, applied chamfered base, traces of white paint; figures: 36 in.

Estimate: \$ 3000.00- \$ 5000.00



**Lot #312: CONTINENTAL BAROQUE-  
STYLE TORTOISESHELL VENEERED  
TABLE CABINET**

With chamfered glazed sides, the glass door opening to gilt-backed interior, on bun feet; 28 7/8 x 33 3/4 x 13 3/4 in.

Estimate: \$ 1000.00- \$ 2000.00



**Lot #313: FRENCH BAROQUE CARVED  
WALNUT CABINET A DEUX CORPS**

The upper part with molded cornice above wings and cherub heads and a pair of fielded panel doors spaced by fluted columns with brickwork bases, the lower part also enclosed by a pair of doors and raised on bun feet; 6 ft. 5 in. x 4 ft. 11 1/2 in. x 25 in.

Estimate: \$ 2000.00 - \$ 3000.00



**Lot #314: PAIR OF CONTINENTAL  
BAROQUE-STYLE BRASS-MOUNTED  
CARVED-WOOD FIVE-LIGHT WALL  
APPLIQUES**

Each tiered support with fruit-filled basket above pendant acanthus leaf band and bell-flower pendant, the s-scroll arms ending in ringed nozzles, traces of gilding and paint; 21 x 24 in.

Estimate: \$ 800.00 - \$ 1200.00



**Lot #315: ITALIAN BAROQUE-STYLE  
TRESTLE TABLE**

The rectangular solid top above a wooden and iron base, 20th c.; 29 x 30 1/2 x 6 ft. 8 1/2 in.

Estimate: \$ 800.00 - \$ 1200.00



**Lot #316: PAIR OF ITALIAN BAROQUE-  
STYLE CARVED, PAINTED AND  
PARCEL-GILT CANDLESTICKS,  
MOUNTED AS LAMPS**

Each spiral fluted stem with Corinthian capital picked out in pink and blue, fitted to a stepped base; 14 1/2 x 5 1/2 in.

Estimate: \$ 400.00 - \$ 600.00



**Lot #317: PAIR OF ITALIAN CARVED  
GILTWOOD COLUMNS**

Each slightly swelling spiral fluted stem with Corinthian capital and resting on a later marbelized plinth; 7 ft. 4 in. x 10 1/4 x 9 1/2 in.

Estimate: \$ 2000.00 - \$ 3000.00



**Lot #318: FLORENTINE BAROQUE  
CARVED WALNUT CREDENZA**

The molded top above 2 fluted frieze drawers and 2 doors with wood pulls, flanked by Ionic stop-fluted pilasters, the fluted base on bracket feet; 37 x 34 1/4 x 15 3/4 in.

Estimate: \$ 800.00 - \$ 1200.00



**Lot #319: PAIR OF BAROQUE-STYLE  
BRASS FOUR-LIGHT CANDELABRA  
LAMPS**

Each globe and thimble-turned stem with central dish and s-scroll arms, on dome base; 17 3/4 x 12 1/2 in.

Estimate: \$ 1500.00 - \$ 2000.00



**Lot #320: ITALIAN BAROQUE WALNUT  
SGABELLO**

With shaped back rest, the oblong octagonal molded overhang seat on box rails and turned and block legs joined by box stretchers; 41 1/2 x 10 1/2 x 15 1/4 in.

Estimate: \$ 400.00 - \$ 600.00

[To Top](#)

[Back](#)

[Next](#)

## Lots 321 - 330



### **Lot #321: DUTCH BAROQUE MARQUETRY-INLAID CENTER TABLE**

The top with oval panel depicting a richly flower-filled urn on tassled table cover, flanked by birds, with bone and walnut checkered edge, above a frieze drawer and spiral twist legs joined by waved h-stretcher, bun feet; 29 x 39 1/2 x 28 1/2 in. Provenance: From the estate of Fernando Sanchez.

Estimate: \$ 2000.00 - \$ 3000.00



### **Lot #322: PAIR OF CONTINENTAL BAROQUE-STYLE WALNUT AND STAMPED LEATHER SIDE CHAIRS**

Each brass-studded vinework stamped back with shaped crest, above stamped seat on turned and block legs, joined at the front by pierced stretcher, ending in scroll feet; 4 ft. 7 1/4 in. x 22 in. Provenance: From the estate of Fernando Sanchez.

Estimate: \$ 1200.00 - \$ 1800.00



### **Lot #323: ITALIAN BAROQUE-STYLE CARVED GILTWOOD SMALL MIRROR**

The plate within tiered leaf surround and a pierced frame carved with pomegranates and leaf scrolls; 19 1/2 x 17 in.

Estimate: \$ 400.00 - \$ 600.00





**Lot #324: ITALIAN BAROQUE CARVED AND PAINTED WOOD URN, MOUNTED AS A LAMP**

The spherical part-reeded bowl on leaf-banded stem and square base, filled with a spray of 3 floral stems and foliage; 28 1/2 x 7 x 7 1/2 in. Estimate: \$ 700.00 - \$ 900.00



**Lot #325: VENETIAN ROCOCO-STYLE CARVED, PAINTED AND PARCEL-GILT SHELL-FORM GROTTO TABLE**

The fluted shell-form top backed by tiered conch shells, raised on tripod black and gilt dolphin-form legs joined by a 3-shell shelf and resting on shell feet; 29 x 20 x 20 1/2 in. Estimate: \$ 800.00 - \$ 1200.00



**Lot #326: ITALIAN ROCOCO-STYLE CLEAR AND GREEN GLASS HUNG PAINTED-METAL SIX-LIGHT CHANDELIER**

The pear-form skeletal frame with turned giltwood finials and supporting s-scroll decorative arms and the candle arms ending in tole 8-petal nozzles and joined by faceted swags and green pendants; approx. 4 ft., 36 in. diam.

Estimate: \$ 2000.00 - \$ 3000.00



**Lot #327: PAIR OF ROCOCO-STYLE CARVED, RED-STAINED AND PARCEL-GILT WALL PANELS**

Each vertical piece pierced and carved with acanthus leaf scrolls, gilt highlights; 4 ft. 9 in. x 18 in. Provenance: The estate of Fernando Sanchez.

Estimate: \$ 600.00 - \$ 800.00





**Lot #328: DUTCH ROCOCO-STYLE  
MARQUETRY-INLAID SIDE CHAIR**

The shaped top rail centered by a mask head with mother-of-pearl eyes, above a bird and flower urn splat and floral uprights, the scallop-fronted drop-in seat on shell-carved cabriole legs ending in trifoil feet; 43 3/4 x 20 3/4 in.

Provenance: From the estate of Fernando Sanchez.

Estimate: \$ 600.00 - \$ 800.00



**Lot #329: DUTCH ROCOCO  
MARQUETRY-INLAID GAMES TABLE**

The folding top with outset corners, and with a bird perched on a flower-filled basket, opening to a green baize-lined surface with playing cards at the candle rests, raised on cabriole legs ending in pointed feet; 30 x 32 1/2 x 14 in.

Provenance: From the estate of Fernando Sanchez.

Estimate: \$ 1500.00 - \$ 2000.00



**Lot #330: DUTCH OAK TRIPOD TABLE**

The oval scalloped top above a turned stem and terminating in 3 legs; 28 x 24 x 33 1/2 in.

Estimate: \$ 250.00 - \$ 450.00

[Back](#)

[To Top](#)

[Next](#)

## Lots 331 - 340



### **Lot #331: DUTCH WALNUT CABINET**

The serpentine cresting above a single glazed and carved door above a Bombé case, the three drawers with rococo handles, the whole raised on animal paw feet; 7 ft. x 5 ft. 1 1/2 in. x 20 in.

Provenance: Property from the collection of Fernando Sanchez.

Estimate: \$ 800.00 - \$ 1200.00



### **Lot #332: DUTCH PAINTED TRIPOD TABLE**

The oval scalloped top painted with faux marble and blue decoration raised on turned stem with 3 legs; 29 1/2 x 3 x 28 in.

Estimate: \$ 1000.00 - \$ 1500.00



### **Lot #333: CONTINENTAL ROCOCO-STYLE PORCELAIN MIRROR**

The shaped plate within gilt-highlighted scrollwork frame applied with colorful flowerheads; approx. 46 x 28 1/2 in.

Estimate: \$ 1000.00 - \$ 1500.00



**Lot #334: SOUTH GERMAN ROCOCO  
INLAID WALNUT TWO-PIECE BUREAU  
CABINET**

The stepped scallop-fronted section containing 12 small drawers with brass drop handles centering a door with crowned cypher, the slant front flap above a 3 drawer concave-fronted case, on block feet, inlaid with strapwork and stellate medallions; 6 ft. 3/4 in. x 4 ft. 1 in. x 29 1/2 in.

Estimate: \$ 4000.00 - \$ 6000.00



**Lot #335: SOUTH GERMAN INLAID  
WALNUT BOOKCASE CHEST OF  
DRAWERS**

The upper part enclosed by a pair of 2-pane glazed doors above an open recess, the lower part with cross-banded top above 3 drawers fitted with brass urn-cast drop handles, on block feet; 6 ft. 8 1/ in. x 4 ft. 2 1/2 in. x 24 1/2 in.

Estimate: \$ 2500.00 - \$ 3500.00



**Lot #336: SOUTH GERMAN INLAID  
COMMODE**

The scallop-fronted top with fretwork panels above 3 drawers with brass drop handles and applied lower edge, on bun feet; 34 x 42 x 22 3/4 in.

Estimate: \$ 2500.00 - \$ 3500.00



**Lot #337: SWEDISH RED-PAINTED  
LONG CASE CLOCK**

The pierced cresting above a circular gilt door opening to reveal a painted tin face, the case with fluted door and raised on a blockwork base, movement lacking and now with an electric movement; 7 ft. 3 in. x 19 x 13 in.  
Estimate: \$ 2000.00 - \$ 3000.00



**Lot #338: DUTCH ROCOCO WALNUT  
HANGING CABINET**

The swan's neck pediment above a pair of 2-pane glass doors opening to a blue-stained interior, above a shallow drawer with brass bat's wing drop handles; 35 x 34 x 8 1/2 in.  
Estimate: \$ 500.00 - \$ 700.00



**Lot #339: VENETIAN ROCOCO-STYLE  
ETCHED GLASS MIRROR**

The shaped beveled plate within foliate and floral-engraved border plates, beneath a shaped crest; 5 ft. 9 1/4 in. x 35 1/2 in.  
Estimate: \$ 1500.00 - \$ 2500.00



**Lot #340: FLEMISH 17TH C.-STYLE  
UPHOLSTERED BENCH**

Stretcher replaced; 26 x 43 x 22 in.  
Estimate: \$ 600.00 - \$ 800.00

[To Top](#)

[Back](#)

[Next](#)

## Lots 341 - 350



### **Lot #341: ITALIAN CONSOLE TABLE**

The demilune top above 3 scrolling legs joined by a stretcher, made up of old parts; 33 x 44 x 21 in.

Estimate: \$ 1500.00 - \$ 2500.00



### **Lot #342: ITALIAN CARVED, PAINTED AND PARCEL-GILT TRAY-TOP TABLE**

The chamfered rectangular top with molded edge above a flowerhead and shell and foliate-carved frieze and raised on pendant leaf-carved cabriole legs, later painted celadon with blue highlights; 30 1/4 x 27 1/4 x 18 1/2 in.

Estimate: \$ 600.00 - \$ 800.00



### **Lot #343: VENETIAN ROCOCO-STYLE GREEN-STAINED AND INLAID OAK CENTER TABLE**

The overhang scalloped top with stellate center, above a pierced frieze carved with shellwork, on leaf-carved cabriole legs ending in trifid feet; 20 1/4 x 43 x 25 1/2 in.

Estimate: \$ 1500.00 - \$ 2500.00



**Lot #344: VENETIAN ROCOCO-STYLE  
CARVED AND GREEN STAINED SIDE  
TABLE**

The scalloped top with cream-enclosed green panel, above a scalloped frieze on pendant leaf-carved cabriole legs ending in pieds de biche; 29 1/2 x 37 1/4 x 27 in.

Estimate: \$ 600.00 - \$ 800.00



**Lot #345: VENETIAN ROCOCO-STYLE  
CARVED, CREAM-PAINTED AND  
PARCEL-GILT HEADBOARD**

The padded panel with shell-crested tassled lambrequin, flanked at the corners by plumes; 6 ft. 1 in. x 7 ft.

Estimate: \$ 800.00 - \$ 1200.00



**Lot #346: VENETIAN ROCOCO-STYLE  
CARVED AND RED-PAINTED  
DRESSING TABLE**

The cartouche-shape swing plate with pierced shell crest, the glass-paneled serpentine-fronted top above pierced frieze drawer and carved with flowers and shellwork and painted with chinoiserie figures, on cabriole legs ending in scroll toes; 5 ft. 4 1/2 in. x 39 x 18 1/2 in.

Estimate: \$ 1200.00 - \$ 1800.00



**Lot #347: ITALIAN 17TH C.-STYLE  
WALNUT TRESTLE TABLE**

The rectangular top above vase-form splayed legs, joined at stretcher by iron cross braces; 29 1/2 x 53 3/4 x 31 in.

Estimate: \$ 2000.00 - \$ 3000.00





**Lot #348: ITALIAN MOTHER-OF-PEARL  
INLAID ROSEWOOD WORK TABLE**

The hinged top with flower-filled urn within pewter-inlaid vinework surround, opening to a fitted interior with hinged mirror, the case with sawtooth edge and the pedestal on concave base and s-scroll feet; 31 3/4 x 20 1/2 x 16 3/4 in.

Estimate: \$ 800.00 - \$ 1200.00



**Lot #349: ITALIAN ROCOCO-STYLE  
CARVED WALNUT OPEN ARMCHAIR**

The cartouche-shape back within scrollwork frame, the s-form arms on bracket supports and the turned legs joined by box stretcher; 4 ft. 2 in. x 28 in.

Estimate: \$ 700.00 - \$ 900.00



**Lot #349A: BACCARAT-STYLE 16-LIGHT  
CHANDELIER**

Measuring 54 x 40 in.

Estimate: \$ 4000.00 - \$ 6000.00



**Lot #350: EIGHT-LIGHT GLASS AND  
GILT-METAL ITALIAN CHANDELIER**

36 x 27 in.

Estimate: \$ 800.00 - \$ 1200.00

[To Top](#)

[Back](#)

[Next](#)

## **Lots 351 - 360**



### **Lot #351: PAIR OF ITALIAN ROCOCO CARVED WALNUT SIDE CHAIRS**

Each padded back with serpentine crest, and the upholstered seat on lateral double scroll front legs and angular rear legs joined by waved x-stretcher; 46 1/2 x 21 1/2 in.

Estimate: \$ 1500.00 - \$ 2500.00



### **Lot #352: ITALIAN ROCOCO IVORY-INLAID WALNUT CONSOLE TABLE**

The cross-banded serpentine-fronted top centered by a flower-filled basket and 2 birds, on burrwood ground, within nut-laden foliate vinework, the frieze with flower center and carved lower edge, on cabriole leg; 28 1/2 x 35 3/4 x 17 3/4 in.

Estimate: \$ 800.00 - \$ 1200.00



### **Lot #353: PAIR OF FAUX PAINTED CONTINENTAL SIDE TABLES**

Each with scalloped top above a turned stemmed with tripod legs; 27 1/2 x 22 1/2 x 24 in.

Estimate: \$ 600.00 - \$ 800.00



**Lot #354: CONTINENTAL ROCOCO  
CARVED, PAINTED AND PARCEL-GILT  
MIRROR**

The frame with pseudo pilasters supporting a shaped and pierced crest with flame-enclosed cabochon rondels, foliage and shell tips, conforming base; 47 1/4 x 25 in.

Estimate: \$ 2500.00 - \$ 4500.00



**Lot #355: ITALIAN EBONIZED, GILT  
AND MARBLE-MOUNTED MIRROR**

36 x 30 1/2 in.

Estimate: \$ 800.00 - \$ 1200.00



**Lot #356: TWO ITALIAN ROCOCO-  
STYLE CARVED GILTWOOD GROTTTO  
PIECES**

Comprising a chair with shell back and seat, dolphin-form arms and conch shell legs and a shell-top table on tripod dolphin legs joined by a shelf with shell specimen. Provenance:

Property from the collection of Gordon Getty.

Estimate: \$ 1000.00 - \$ 2000.00



**Lot #357: ROCOCO REVIVAL CARVED  
GILTWOOD OVERMANTEL MIRROR**

The frame carved with beading and ribbon-bound flower bands and surmounted by a serpentine pierced crest with shell-tipped c-scrolls and floral branches; 6 ft. 4 in. x 43 1/2 in.

Estimate: \$ 1000.00 - \$ 1500.00



**Lot #358: RED PAINTED SWEDISH  
COMMODE**

The rectangular top above 3 long drawers on  
splayed legs; ft. 1/2 in. x 3 ft. x 21 in.

Estimate: \$ 2000.00 - \$ 3000.00



**Lot #359: WILLIAM AND MARY  
CARVED WALNUT ARMCHAIR**

The shaped top rail with relief-carved  
strapwork above spoon-shape slats, the s-form  
armrests on vase supports, the seat on  
rectangular trumpet-form legs joined by waved  
x-stretcher; 44 x 23 x 18 3/4 in.

Estimate: \$ 600.00 - \$ 800.00



**Lot #360: QUEEN ANNE INLAID  
WALNUT CHEST ON STAND**

The cross-banded molded top above 2 short and  
3 long drawers with brass bat's wing drop  
handles, the 3-drawer kneehole stand with  
scroll apron and cabriole legs ending in pad  
feet; 5 ft. 1 1/2 in. x 37 3/4 x 20 in.

Estimate: \$ 2000.00 - \$ 3000.00

[To Top](#)

[Back](#)

[Next](#)

## **Lots 361 - 370**



### **Lot #361: PAIR OF QUEENE ANNE WALNUT SIDE CHAIRS WITH TAPESTRY UPHOLSTERY**

Each arched padded backrest with flower-filled urn panel removed by rear hinge, the upholstered seat on cabriole legs ending in pad feet; 40 x 20 in. Provenance: Property from the Cooper-Hewitt National Design Museum, to be sold for the benefit of the Aquisitions fund.

Estimate: \$ 3000.00 - \$ 5000.00



### **Lot #362: LOUIS XIV GILTWOOD OVERMANTEL MIRROR**

63 1/4 x 44 1/2 in.

Estimate: \$ 1500.00 - \$ 2500.00



### **Lot #363: PAIR OF REGENCE-STYLE CARVED OAK FAUTEUILS A LA REINE**

Each padded back with foliate and incised diamond lattice frame, flanked by padded arms, the concave-fronted seat on foliate-carved cabriole legs; 33 1/4 x 25 1/2 in.

Estimate: \$ 500.00 - \$ 700.00



**Lot #364: LOUIS XV CARVED OAK  
MARBLE-TOP CONSOLE TABLE**

The later brown and white mottled marble top above a carved frieze and raised on carved cabriole legs; 28 1/2 x 41 1/2 x 32 1/4 in.

Estimate: \$ 2000.00 - \$ 3000.00



**Lot #365: PAIR OF LOUIS XV-STYLE  
CUT-GLASS MOUNTED GILT-BRONZE  
WALL APPLIQUES**

Each pear-form skeletal framework with acanthus scrollwork and fitted with beaded faceted and plain tear drops; 28 1/2 x 13 1/2 x 7 in.

Estimate: \$ 2000.00 - \$ 3000.00



**Lot #366: CONTINENTAL CARVED AND  
GILT MIRROR**

The naturalistic carved frame with bow knot at the base; 29 1/2 x 26 in.

Estimate: \$ 1000.00 - \$ 1500.00



**Lot #367: CONTINENTAL SIX-LIGHT  
GLASS AND BEADED CHANDELIER**

26 x 37 in.

Estimate: \$ 1000.00 - \$ 1500.00

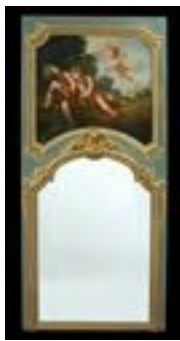




**Lot #368: LOUIS XV CARVED  
GILTWOOD CONSOLE WITH MARBLE  
TOP**

The veined pink marble serpentine-fronted top above a shell and foliate frieze on crosshatched and diagonal reeded ground, raised on foliate-carved double scroll legs; 30 1/4 x 31 1/2 x 17 in.

Estimate: \$ 2500.00 - \$ 4500.00



**Lot #369: LOUIS XV-STYLE PAINTED  
AND PARCEL-GILT TRUMEAU**

The rectangular painting depicting a putto and 2 young boys, above an arched rectangular mirror plate, the whole painted in light blue, green and gold; 8 ft. x 3 ft. x 1 1/4 in.

Estimate: \$ 3000.00 - \$ 5000.00



**Lot #370: LOUIS XV CARVED  
GILTWOOD MIRROR**

The painted frame carved with acorn-laden oak leaves entwined in s-scrolls, the crest with floral cluster and the base with smaller cluster; 4 ft. 2 in. x 32 1/2 in.

Estimate: \$ 600.00 - \$ 800.00

[To Top](#)

[Back](#)

[Next](#)

## **Lots 371 - 380**



**Lot #371: SET OF FOUR LOUIS XV  
CARVED, PAINTED AND PARCEL-GILT  
FAUTEUILS EN CABRIOLET AND FOUR  
MATCHING CHAISES**

Each cartouche-shape back with flower and leaf crest, the fauteuils with padded arms, on flowerhead-carved cabriole legs ending in scroll toes; 35 x 23 in. and 35 x 20 in.

Estimate: \$ 4000.00 - \$ 6000.00



**Lot #372: LOUIS XV-STYLE BRASS  
THREE-LIGHT BOULIOTTE LAMP**

The urn stem rising from a scalloped base, supporting the c-scroll arms, centering an adjustable green tole shade; 20 5/8 in., diam. of shade: 13 1/4 in.

Estimate: \$ 300.00 - \$ 500.00



**Lot #373: LOUIS XV PROVINCIAL-  
STYLE FRUITWOOD BUREAU PLAT**

The molded top above 3 drawers with metal drop handles, on angular cabriole legs; 30 7/8 x 4 ft. 2 in.

Estimate: \$ 1000.00 - \$ 1500.00

**Lot #374: PAIR OF LOUIS XV CARVED  
GILTWOOD SMALL CONSOLES WITH  
MARBLE TOPS**



Each serpentine-fronted Brocatelle marble top above a pierced frieze carved with central leaf-enclosed cross-hatched cabochon and fluting and raised on shell, leaf and flower and chain-carved cabriole legs, joined by a stretcher; 32 1/4 x 29 x 15 in.

Estimate: \$ 5000.00 - \$ 7000.00

**Lot #375: LOUIS XV-STYLE CARVED,  
PAINTED AND PARCEL-GILT DAY BED**



Each padded end with slightly roll-over flower carved crest, on ribbon-bound tiered leaf supports continuing into the scroll feet, joined by rails at each side; 42 x 7 ft. 3 in. x 4 ft. 6 in. Provenance: From the estate of Fernando Sanchez.

Estimate: \$ 1200.00 - \$ 1800.00

**Lot #376: CONTINENTAL PAINTED AND  
PARCEL-GILT WALL BRACKET**



With interlocking c-scroll and carved foliage; 17 x 28 in.

Estimate: \$ 1500.00 - \$ 2000.00

**Lot #377: LOUIS XV-STYLE GILT-  
BRONZE MOUNTED KINGWOOD  
BUREAU PLAT**



The shaped top with gold-tooled green leather panel and a molded rim, above a frieze drawer at one front and tiered leaf edges, the cabriole legs with female-headed espagnolettes and spines continuing to scroll toes; 30 x 4 ft. 6 in. x 29 in.

Estimate: \$ 1000.00 - \$ 1500.00



**Lot #378: LOUIS XV-STYLE CARVED  
ROSEWOOD FAUTEUIL A LA REINE**

Retailed by Guerier Freres, Paris: the cartouche back with flower carved crest, the arms on voluted supports and the serpentine seat on flower-carved cabriole legs; 37 3/4 x 24 1/2 x 22 1/2 in.

Estimate: \$ 300.00 - \$ 500.00



**Lot #379: LOUIS XV-STYLE CARVED  
GILTWOOD MIRROR**

The molded and strapwork frame within pierced flower and shell-form border with mirror plates shaped crest and apron; 5 ft. x 39 1/2 in. Provenance: From the estate of Fernando Sanchez.

Estimate: \$ 1500.00 - \$ 2000.00



**Lot #380: LOUIS XV ROSEWOOD  
PARQUETRY WRITING DESK**

The fall front opening to reveal a fitted interior and well above a case fitted with 2 cupboard doors and 8 drawers, the feet ending in ormolu sabots, 18th c., 35 x 4 ft. 6 in. x 16 in. Property sold to benefit the Brooklyn Museum.

Estimate: \$ 2000.00 - \$ 3000.00

[To Top](#)

[Back](#)

[Next](#)

## **Lots 381 - 390**



### **Lot #381: LOUIS XV PROVINCIAL WALNUT BUREAU PLAT**

The 2-plank overhang top above 2 drawers fitted with later pulls, raised on angular cabriole legs; 30 x 4 ft. 9 3/4 in. x 32 1/2 in.

Estimate: \$ 2000.00 - \$ 3000.00



### **Lot #382: LOUIS XV-STYLE GILT- METAL MOUNTED AND FLORAL MARQUETRY INLAID TABLE EN CHIFFONIERE**

The crossbanded gilt-rimmed top inlaid with flower-filled fluted bowl, above a side drawer and 2 drawers sans traverse at the front, each side with flower filled bowl, on slender cabriole legs with foliate scroll sabots; 28 3/4 x 12 x 10 in. Provenance: Property from the Cooper-Hewitt National Design Museum, to be sold for the benefit of the Aquisitions fund.

Estimate: \$ 1500.00 - \$ 2500.00



### **Lot #383: LOUIS XV GILT-BRONZE MOUNTED BLACK LACQUER COMMODE**

Of serpentine outline and bombé contour, the breche d'aleppes marble top above 2 drawers sans traverse with gilt chinoiserie figures in garden setting, the sides also decorated; 33 3/4 x 4 ft. 3 in. x 26 1/2 in. Provenance: Property from the Cooper-Hewitt National Design Museum, to be sold for the benefit of the Aquisitions fund.

Estimate: \$ 7000.00 - \$ 9000.00



**Lot #384: GEORGE II-STYLE  
MAHOGANY AND PARCEL-GILT  
MIRROR**

The rectangular plate within bead-and-reel inner band and a drapery-hung frame surmounted by stepped cornice with drapery swag;

Estimate: \$ 700.00 - \$ 900.00



**Lot #385: LOUIS XV-XVI  
TRANSITIONAL INLAID BOIS  
AMARANTH COMMODE WITH  
MARBLE TOP**

The molded breakfront top above 3 short and 2 long drawers, sans traverse, with narrow cross-banding and gilt-bronze husk-cast ring drop handles and bow-knotted key escutcheons, on cabriole legs ending in leaf scroll sabots; 33 x 4 ft. 8 1/2 x 22 1/2 in.

Estimate: \$ 4000.00 - \$ 6000.00



**Lot #386: REGENCE EBONIZED  
MARBLE-TOP SIDE TABLE**

The grey-mottled top above a frieze fitted with 2 drawers raised on angular cabriole legs ending in ormolu sabots; 28 1/2 x 19 1/2 x 30 in.

Estimate: \$ 1800.00 - \$ 2200.00



**Lot #387: GEORGE II-STYLE WALNUT  
AND PARCEL GILT OVERMANTLE  
MIRROR**

The horizontal plate above 3 base plates, within petal tip and egg-and-dart borders; 45 1/2 x 4 ft. 9 in.

Estimate: \$ 2000.00 - \$ 3000.00





**Lot #388: GEORGE II CARVED  
GILTWOOD MIRROR**

The beveled plate within narrow leaf-carved frame surmounted by a pierced crest carved with shellwork and c-scrolls, pierced shell-carved apron; 37 1/4 x 19 1/2 in.

Estimate: \$ 1800.00 - \$ 2200.00



**Lot #389: PAIR OF PORCELAIN  
CAMPANI-FORM URNS, MOUNTED AS  
LAMPS**

Each bowl with 2 mythic bird panels, flanked by sky blue handles rising from a gilt ram's heads, on husk-cast metal bases; 26 1/2 in.

Estimate: \$ 1000.00 - \$ 1500.00



**Lot #390: SET OF THREE LOUIS XVI-  
STYLE GILTWOOD AND GILT-METAL  
FIVE-LIGHT WALL APPLIQUES**

Each bow knotted ribbon back plate with garden or painting trophy and supporting the c-scroll candle arms; 43 x 21 1/2 in.

Estimate: \$ 1200.00 - \$ 1800.00

[To Top](#)

[Back](#)

[Next](#)

## **Lots 391 - 400**



### **Lot #391: LOUIS XVI MAHOGANY MARBLE TOP COMMODE**

Grey mottled top above 3 short and 2 long drawers, raised on turned fluted legs; 32 1/2 x 58 3/4 x 19 1/2 in.

Estimate: \$ 2500.00 - \$ 4500.00



### **Lot #392: SET OF FOUR LOUIS XVI- STYLE CUT-GLASS MOUNTED GILT- METAL FIVE-LIGHT WALL APPLIQUES**

Each backplate with flambeau urn above husk swags, guilloche and berry pendant, supporting the leaf cast and beaded c-scroll arms joined by faced swags and beveled drops; 21 1/2 x 18 x 11 1/2 in.

Estimate: \$ 1500.00 - \$ 2500.00



### **Lot #393: LOUIS XVI-STYLE MAHOGANY CIRCULAR TRIPOD TABLE**

The circular brass-bound mahogany top raised on a fluted stem, the whole raised on angular cabriole legs; 28 1/2 in., 33 1/2 in. diam.

Estimate: \$ 1000.00 - \$ 1500.00



**Lot #394: LOUIS XVI-STYLE STEEL AND GILT-METAL THREE-LIGHT BOUILLOTTE LAMP**

The ebonized vine-wrapped stem rising from pierced galleried base and the goat-headed arms with leafy drip pans and nozzles, adjustable black tole shade; 34 in., 9 1/2 in. diam. of base. Estimate: \$ 1000.00 - \$ 2000.00



**Lot #395: SET OF FOUR LOUIS XVI-STYLE GILT-BRONZE TWO-LIGHT WALL APPLIQUES**

Each bow-knotted back supporting pendant grape clusters and the acanthus leaf-cast scroll arms ending in drapery-hung nozzles; 22 x 12 x 6 3/4 in. Estimate: \$ 2500.00 - \$ 4500.00



**Lot #395A: LOUIS XV-STYLE BUREAU PLAT**

The top with inset leather, frieze fitted with a single drawer; the whole raised on angular cabriole legs; 27 1/2 x 42 x 27 in. Estimate: \$ 1000.00 - \$ 1500.00



**Lot #396: SET OF SIX LOUIS XVI-STYLE CARVED AND PAINTED FAUTEUILS A LA REINE**

Each rectangular padded back within entrelac borders with acanthus crest, with padded arms, the seat above guilloche rails and angular stop-fluted legs; 38 x 23 x 21 in. Estimate: \$ 4000.00 - \$ 6000.00



**Lot #397: LOUIS XVI-STYLE CARVED AND PAINTED WALL PANEL**

The vertical fielded panel applied with a bow-knotted music trophy, on green-ground with rosettes at corners, within cream molded border; 5 ft. 6 1/4 in. x 33 1/2 in.

Estimate: \$ 1000.00 - \$ 1500.00



**Lot #398: CONTINENTAL CARVED GILTWOOD WALL BRACKET**

The oblong shelf with gilt cut out leather pendant leaf edge above brass nail heads and flute and flower-carved lower section.

Provenance: Property from the collection of Bronson Pinchot.

Estimate: \$ 400.00 - \$ 600.00

**Lot #399: NO LOT**



**Lot #400: PAIR OF LOUIS XVI-STYLE GILT-METAL TWO-LIGHT WALL APPLIQUES**

Each bow-knotted ribbon back supporting the flower-filled basket from which rise s-scroll arms; 17 x 10 x 4 5/8 in.

Estimate: \$ 700.00 - \$ 900.00

[To Top](#)

[Back](#)

[Next](#)