

Lots 401 - 410



**Lot #401: LOUIS XVI-STYLE GILTWOOD
SUNBURST MIRROR**

Of typical form; 26 in.

Estimate: \$ 600.00 - \$ 800.00



**Lot #402: SET OF TWELVE LOUIS XVI-
STYLE WHITE-PAINTED CHAIRS**

Each with arch-shaped back raised on padded seat and supported by 4 turned and fluted legs, 20th c., 36 x 20 x 19 in.

Estimate: \$ 4000.00 - \$ 6000.00



**Lot #403: EARLY GEORGE III-STYLE
CARVED MAHOGANY TWO-CHAIR
BACK SETTEE**

The serpentine foliate-carved top rail above 2 pierced baluster splats, the upholstered seat on canted fret-carved legs; 39 1/4 x 4 ft. 1 1/2 in.
Note: Property sold to benefit the Brooklyn Museum.

Estimate: \$ 800.00 - \$ 1200.00



**Lot #404: EARLY GEORGE III CARVED
MAHOGANY SILVER TABLE**

The top with narrow cross banding above blind fretwork frieze and pierced legs with brackets and ending in block toes; 26 3/4 x 32 1/2 x 21 1/4 in.

Estimate: \$ 500.00 - \$ 700.00



**Lot #405: GEORGE III-STYLE
MAHOGANY PREDESTAL DESK**

Rectangular leather inset top above a frieze fitted with 3 drawers, raised on pedestals, fitted with 3 drawers and cupboard doors; 28 1/2 x 48 x 25 3/4 in.

Estimate: \$ 2000.00 - \$ 3000.00



**Lot #406: PAIR OF GEORGE III CARVED
GILTWOOD THREE-LIGHT WALL
APPLIQUES**

Each oval mirror plate flanked by foliate branches and surmounted by floral sprays, s-form candle arms above a fluted and half-round fan and floral pendant; 42 x 20 1/2 x 8 1/4 in.

Estimate: \$ 3000.00 - \$ 5000.00



**Lot #407: PAIR OF GEORGE III-STYLE
BRASS AND CARVED WOOD SINGLE-
LIGHT WALL APPLIQUES WITH
ETCHED GLASS SHADES**

Each circular foliate back plate with s-scroll arm ending in waisted nozzle and the shade acid etched with flower and foliate band; 17 1/2 x 6 in.

Estimate: \$ 1000.00 - \$ 2000.00



**Lot #408: GEORGIAN-STYLE GILT-
METAL AND BRONZE THREE-LIGHT
SMALL HALL LANTERN**

The waved glass plates enclosing the candlestick arms, beneath s-scroll rods to ceiling ring; 20 1/2 x 8 3/4 in.

Estimate: \$ 200.00 - \$ 400.00



**Lot #409: IRISH GEORGE III INLAID
MAHOGANY WHEEL BAROMETER**

Spear and Co. College Green, Dublin:
incorporating barometer and thermometer dials,
within shaped case beneath swan's neck
pediment; 38 1/4 x 10 in.
Estimate: \$ 800.00 - \$ 1200.00



**Lot #410: PAIR OF CHINESE
CHIPPENDALE-STYLE MAHOGANY
HANGING SHELVES**

Each galleried and pagoda roof top above fret
bands and open shelves with pierced canted
corners and sides; 44 1/4 x 34 1/2 x 9 1/2 in.
Provenance: Property from the Cooper-Hewitt
National Design Museum, to be sold for the
benefit of the Aquisitions fund.
Estimate: \$ 1500.00 - \$ 2500.00

[To Top](#)

[Back](#)

[Next](#)

Lots 411 - 420



Lot #411: CHINESE BRASS-MOUNTED RED LACQUER CABINET ON STAND

The rectangular hinged top with engraved lock plate above a pair of doors incised with dragons, the sides with vases and drop handles, the stand on block legs with pendant foliage; 43 3/4 x 19 x 14 1/2 in.

Estimate: \$ 800.00 - \$ 1200.00



Lot #412: FAMILLE ROSE PORCELAIN TURQUOISE-GROUND BALUSTER- FORM JAR AND COVER, MOUNTED AS A LAMP

Worked with iron red dragon rondels, the ground with birds, flowers and fruit, giltwood base on bracket feet; 30 1/2 in.

Estimate: \$ 400.00 - \$ 600.00



Lot #413: GEORGE III MAHOGANY CHEST OF DRAWERS

The molded top above 4 graduated cock-beaded drawers fitted with brass drop handles, raised on bracket feet; 36 1/4 x 37 3/4 x 20 3/4 in.

Estimate: \$ 800.00 - \$ 1200.00



Lot #414: PAIR OF FRENCH METAL-MOUNTED ENAMELED GLASS PEAR-FORM OIL LAMPS

Each decorated in the Canton-style with lobed figure reserves, butterflies, fruiting branches and flowers, the base with grape clusters, and the pierced collar with nuts and foliage, electrified; 19 in.

Estimate: \$ 1000.00 - \$ 1500.00



Lot #415: GEORGE III MAHOGANY READING TABLE

The rectangular top above a frieze fitted with a drawer that opens at both sides, fitted with a leather-lined writing slide, the whole raised on line-inlaid square tapering legs; 28 1/2 x 26 x 25 in.

Estimate: \$ 2000.00 - \$ 3000.00



Lot #416: SET OF TEN GEORGE III-STYLE CARVED MAHOGANY DINING CHAIRS

Incorporating 2 armchairs, each trefoil top rail centering Prince-of-Wales plumes and drapery swags, the upholstered seat on square tapered legs ending in block toes; 38 x 23 in. and 37 1/2 x 20 1/2 in.

Estimate: \$ 2500.00 - \$ 4500.00



Lot #417: GEORGE III BRASS-MOUNTED STEEL COAL GRATE WITH CAST-IRON BACK

The breakarch plate with crane and animal above date 1697, the serpentine front with pierced scrollwork band flanked by urn finials, on tapered legs; 30 3/4 x 22 1/2 x 10 1/2 in.

Estimate: \$ 1000.00 - \$ 1500.00



Lot #418: ENGLISH BRASS SERPENTINE-FRONTED FENDER

With applied upper rim and molded base; 5 3/4 x 42 1/4 x 7 1/2 in.

Estimate: \$ 250.00 - \$ 450.00



Lot #419: BRASS FIRE FENDER AND A PAIR OF TOOL RESTS

The serpentine front continuing around to tiered lobed finials, the rests with reeded ball finials and trestle feet; 14 3/4 x 38 1/2 in. and 9 1/2 x 6 1/2 in.

Estimate: \$ 300.00 - \$ 500.00



Lot #420: SET OF FOUR GEORGE III-STYLE CREAM-GROUND PAINTED SHIELD-BACK SIDE CHAIRS

Each openwork back with pierced stamped splats, flanked by shaped arms and the slightly bowed seats on square, tapered legs, painted with berries and foliate vines; 36 x 6 ft. 6 in. x 21 1/2 in.

Estimate: \$ 1000.00 - \$ 1500.00

[To Top](#)

[Back](#)

[Next](#)

Lots 421 - 430



Lot #421: PAIR OF GEORGE III-STYLE CREAM-GROUND PAINTED FOUR-CHAIR BACK SETTEES

The openwork shield backs with pierced stamped splats flanked by shaped arms and the slightly bowed seats on square, tapered legs, painted with berries and foliate vines; 36 x 6 ft. 6 in. x 21 1/2 in.

Estimate: \$ 2500.00 - \$ 4500.00



Lot #422: GEORGE III MAHOGANY TWO-PIECE BOOKCASE CABINET

The upper section with coved cornice above 3 11-pane glazed doors with gothic lancet bars, the outset lower section enclosed by 3 doors, on bracket feet, back, right and left 4 in. section of cornice missing; 8 ft. 4 1/4 in. x 5 ft. 4 in. x 23 1/2 in.

Estimate: \$ 3000.00 - \$ 5000.00



Lot #423: GEORGE III SATINWOOD-INLAID MAHOGANY HANGING CABINET

The cornice with raised satinwood central panel, above a pair of 8-pane glazed doors with gothic lancet bars, molded base; 42 1/2 x 36 1/4 x 10 in.

Estimate: \$ 800.00 - \$ 1200.00



Lot #424: GEORGE III-STYLE INLAID SATINWOOD CHEVAL MIRROR

The rectangular swing plate on block supports with urn finials and cross-banding, above 2 cross bars and inlaid down-swept legs ending in brass box casters; 6 ft. x 30 x 24 1/4 in.

Estimate: \$ 1000.00 - \$ 2000.00



Lot #425: SET OF EIGHT GEORGE III CARVED MAHOGANY GOTHIC DINING CHAIRS

Including 2 armchairs, each serpentine top rail above pierced back with 4 lancet bands, the arms with conforming panels, the drop-in seat on bead-and-reel canted and bracketed legs; 38 3/4 x 21 in. and 39 1/4 x 24 1/2 in.

Estimate: \$ 5000.00 - \$ 10,000.00



Lot #426: GEORGE III MAHOGANY SERPENTINE-FRONTED SIDE TABLE

The top with veneered edge and flame-veneered frieze, raised on square tapered legs; 36 1/4 x 5 ft. 5 3/4 in. x 22 3/4 in.

Estimate: \$ 2000.00 - \$ 3000.00



Lot #427: GEORGE III INLAID MAHOGANY AND SATINWOOD MINIATURE CABINET

Enclosed by a cross-banded door with oval fan medallion and checkered stringing, flanked by fan and checkered-inlaid panels and diamond panels, above 5 drawers with ivory pulls; 16 1/4 x 16 1/2 x 10 in.

Estimate: \$ 1200.00 - \$ 1800.00



**Lot #428: SET OF SEVEN ASSEMBLED
CARVED MAHOGANY DINING CHAIRS**

Including 2 armchairs, each serpentine top rail above pierced baluster splat and the drop-in seat on canted legs joined by h-stretcher; 38 x 21 in. and 39 x 22 1/4 in.

Estimate: \$ 2000.00 - \$ 3000.00



**Lot #429: GEORGE III MAHOGANY
MINIATURE CHEST OF DRAWERS**

The rectangular top above 2 short and 3 long drawers fitted with brass pulls, on bracket feet; 15 3/4 x 14 3/4 x 8 1/2 in.

Estimate: \$ 300.00 - \$ 500.00



**Lot #430: GEORGE III BRASS-MOUNTED
MAHOGANY WINE COOLER ON STAND**

Of oval outline with 2 brass bands and drop handles, fitted with 2-handled lead liner, the separate stand on flared legs fitted with brackets; 22 3/4 x 25 in.

Estimate: \$ 1500.00 - \$ 2500.00

[To Top](#)

[Back](#)

[Next](#)

Lots 431 - 440

Lot #431: PAIR OF GEORGE III-STYLE CARVED, PAINTED AND PARCEL-GILT CONSOLE TABLES



Each pink mottled marbelized top above Vitruvian scrollwork black-ground frieze, the elephant head front supporting bead and husk swags, on paw feet resting on marbelized plinth. Provenance: Property from the collection of Mr. Gordon Getty.

Estimate: \$ 2500.00 - \$ 4500.00

Lot #432: GEORGE III INLAID MAHOGANY GAMES TABLE



The top with sliding panel opening to a checkerboard and peg bars, and backgammon wells, the frieze containing two drawers with ivory pulls, on tapered legs ending in brass box casters; 30 x 30 1/4 x 20 1/4 in.

Estimate: \$ 2000.00 - \$ 4000.00



Lot #433: PAIR OF CHINESE BLACK-GLAZED VASES, MOUNTED AS LAMPS

Each angular tapered bowl with gilt chinoiserie figures amidst gardens or water, beneath cylindrical neck; 18 in.

Estimate: \$ 800.00 - \$ 1200.00



Lot #434: PAIR OF GEORGE III-STYLE CARVED MAHOGANY STOOLS

Each serpentine drop-in seat on plain rails and hipped cabriole legs carved with shell-enclosed cabochons and pendant bell flowers ending in claw and ball feet; 20 x 21 x 17 1/2 in.

Estimate: \$ 1000.00 - \$ 1500.00



Lot #435: GEORGE III-STYLE CARVED GILTWOOD OVAL MIRROR

The pierced framework carved with rose branches and husk swags amidst s and c-scrolls and surmounted by two birds at the shoulders centering a tiered scrollwork crest; 5 ft. 2 in. x 39 1/2 in.

Estimate: \$ 2500.00 - \$ 3500.00



Lot #436: GEORGE III-STYLE INLAID MAHOGANY BOW-FRONT SIDE TABLE

The cross-banded top above a cock-beaded drawer with brass oval drop handles, on square, tapered legs; 30 x 44 x 20 in.

Estimate: \$ 2000.00 - \$ 4000.00



Lot #437: GEORGE III-STYLE CARVED MAHOGANY TRIPOD TEA TABLE

The tilting pie crust top on bird cage support and vase-form pedestal, the cabochon and foliate-carved legs ending in leaf-tip club feet; 30 in., 35 3/4 in. diam.

Estimate: \$ 500.00 - \$ 700.00

**Lot #438: PAIR OF GEORGE III
MAHOGANY CARVED LIBRARY
ARMCHAIRS**

Each needlepoint upholstered back and seat with acanthus carved arms, the seat raised on cabriole legs with scroll feet and plain rear feet and legs, one leg stamped "Gibside," 41 x 25 1/2 x 23 in.



This pair of George III library armchairs, are stamped "Gibside" on the seat rails and on the inner sides of the legs. Gibside Hall, Durham County, was the ancestral home of Elizabeth Bowes-Lyon, later Queen Elizabeth, the Queen Mother. Her forbear, George Bowes inherited the estate in 1721. He profited handsomely from the coal trade and ploughed his money back into the development of Gibside. Under his stewardship which lasted until his death in 1760, he added a wing to the Hall, built a Mausoleum Chapel and Classical stables, erected the Column of Liberty (the tallest structure outside of London at the time), and created a Gothic Banqueting Hall and an Orangery. Most notable, however, was the massive landscaping project he undertook on the estate's 500 acres, creating one of the greatest 18th C. parks in Northern England. In 1760, his only child, Mary Eleanor, inherited all his properties, including Gibside, and over one million pounds. In turn, the estate then passed to John Bowes-Lyon, her eldest son by the ninth Earl of Strathmore. He shared his grandfather's passion for Gibside and made considerable improvements to the structures as well as replanting the woods that had been destroyed by his stepfather. In 1832, the property passed to John Bowes, the son of the tenth Earl of Strathmore. When he died childless in 1885, the estate reverted to the Earls of Strathmore, the Bowes-Lyon family. In the early part of the 20th century, Gibside was rented to a local solicitor and during World

War I, Land Army Girls were billeted in the servants' quarters. After a fire in 1920, the Hall was dismantled and everything of value was removed to Glamis Castle, the seat of the Earls of Strathmore in Scotland. It is likely that this is when the chairs were stamped with their place of origin.

Estimate: \$ 10,000.00 - \$ 15,000.00



Lot #439: SET OF TEN CHIPPENDALE-STYLE CARVED MAHOGANY DINING CHAIRS

Including 2 armchairs; each serpentine top rail above pierced baluster splat, the upholstered seat on acanthus-carved cabriole legs ending in claw and ball feet; 38 x 28 1/2 in.

Estimate: \$ 2500.00 - \$ 3500.00



Lot #440: CHINOISERIE MAROON-GROUND LACQUER TWO-TIER TABLE

The graduated oblong quatrefoil tiers relief gessoed with a crane, a duck, hens and song birds, amidst flowering branches, on c-scroll supports; 31 3/4 x 39 1/4 x 29 1/2 in.

Estimate: \$ 1000.00 - \$ 2000.00

[To Top](#)

[Back](#)

[Next](#)

Lots 441 - 450



Lot #441: LATE GEORGE III CARVED MAHOGANY GAMES TABLE

The rectangular folding top with round corners and a reeded edge, on square tapered and reeded legs and rear gate leg, surmounted by applied rectangles; 29 3/4 x 34 x 17 in.

Estimate: \$ 600.00 - \$ 800.00



Lot #442: REGENCY-STYLE GLASS-HUNG IVORY-PAINTED METAL SIX-LIGHT CHANDELIER

The primary pierced ring with cast vinework above tiered prism drops and supporting the scroll arms joined by swags, joined to the ceiling spray by chains, centering tiered pendant; 38 in., 29 in. diam.

Estimate: \$ 1000.00 - \$ 1500.00



Lot #443: REGENCY BRASS-MOUNTED EBONY-INLAID READING TABLE

The hinged top with removable rest and rising on brass hinges, above 2 double-hinged candle arms, on ring-turned pedestal and tripod legs ending in brass lion's paw casters; 28 x 20 x 14 1/2 in.

Estimate: \$ 1000.00 - \$ 1500.00



Lot #444: REGENCY-STYLE GILT-METAL AND GLASS CHANDELIER

The gilt-metal rim hung with glass drops; 25 x 22 in.

Estimate: \$ 800.00 - \$ 1200.00



Lot #445: REGENCY EBONIZED AND ORMOLU-MOUNTED RECAMIER

Of typical form; 29 x 79 x 26 3/4 in.

Estimate: \$ 2000.00 - \$ 3000.00



Lot #446: REGENCY-STYLE CARVED MAHOGANY TWO-PEDESTAL DINING TABLE

The divided top with grooved edge and the ringed pedestals on quadruple down-swept reeded legs ending in brass lion's paw feet, with 2 extra leaves; 11 ft. 3 in.

Estimate: \$ 2000.00 - \$ 3000.00



Lot #447: REGENCY CARVED GILTWOOD LARGE CONVEX MIRROR

With ebonized reeded inner border, the ball-applied cavetto with ribbon-bound reeded outer edge; 35 1/2 in. diam.

Estimate: \$ 1500.00 - \$ 2500.00



Lot #448: THREE CHINESE PORCELAIN VASES, MOUNTED AS LAMPS

Comprising one mirror of angular baluster-form with green, yellow and aubergine floral cluster, one of famille rose with flowers and household implements, and a blue-ground lamp with gilt bats and cloud border; vases: 11 to 15 1/2 in., overall: 23 1/4 to 29 1/4 in.

Estimate: \$ 500.00 - \$ 800.00



Lot #449: REGENCY ROSEWOOD SIDE CABINET

The slightly overhang brass inlaid top, above a frieze mounted with 2 drawers and a pair of doors, fitted with brass grills and silk pleated panels, ending in turned feet; 36 x 37 x 13 in.

Estimate: \$ 2000.00 - \$ 4000.00



Lot #450: PAIR OF REGENCY-STYLE GILTWOOD-MOUNTED ROSEWOOD AND LACQUER CABINETS

Each rectangular mottled buff marble top above a pair of doors with gilt chinoiserie lake views, within gilt borders and kingwood crossbanding, the gilt banded base on lion's paw front feet; 33 1/2 x 45 1/2 x 23 in. Provenance: Property from the collection of Mr. Gordon Getty.

Estimate: \$ 2500.00 - \$ 3500.00

[To Top](#)

[Back](#)

[Next](#)

Lots 451 - 460



Lot #451: REGENCY CAST STONE MANTELPIECE

The rectangular top above horizontal grooved frieze centering a raised panel and raised on columned supports surmounted by rondels; 4 ft. 1 1/2 in. x 4 ft. 7 1/2 in. x 8 1/2 in. Provenance: Property from the collection of Bronson Pinchot.

Estimate: \$ 700.00 - \$ 900.00



Lot #452: REGENCY BLACK LACQUER CHINOISERIE CABINET

With mirror-backed single shelf superstructure, the top above a pair of recessed doors flanked by free-standing columns continuing into shaped feet, decorated in relief with gilt landscape and lake view; 4 ft. x 46 1/2 in. x 17 1/4 in.

Estimate: \$ 4000.00 - \$ 6000.00



Lot #453: REGENCY CARVED GILTWOOD OVAL MIRROR

With ebonized reeded inner band and a ball-applied cavetto border within reeding; 33 1/2 x 27 1/2 in.

Estimate: \$ 1000.00 - \$ 1500.00



**Lot #454: REGENCY ROSEWOOD
THREE-DIVISION CANTERBURY**

The dipped top rails on s-form supports, the base containing a drawer with turned pulls, on turned legs ending in brass cup casters; 24 3/4 x 20 1/4 x 16 1/4 in.

Estimate: \$ 800.00 - \$ 1200.00



**Lot #455: PAIR OF REGENCY CARVED
MAHOGANY SIDE CHAIRS**

2 ft. 8 in. x 19 1/2 x 18 in.

Estimate: \$ 400.00 - \$ 600.00

Lot #456: NO LOT



**Lot #457: REGENCY MAHOGANY
BREAKFRONT BOOKCASE**

The cresting above four glazed doors with gothic arch mullions, each compartment fitted with 2 shelves, the lower section with a pair of cupboard doors, flanked by single cupboard doors and raised on plain plinth; 7 ft. 5 in. x 7 ft. 1 in. x 12 in.

Estimate: \$ 4000.00 - \$ 6000.00



**Lot #458: SET OF SIX REGENCY INLAID
MAHOGANY SIDE CHAIRS**

Each turned top rail above blind oval and 4 spindles, the upholstered seat with lower reeded edge, raised on turned legs; 33 1/4 x 20 in.

Estimate: \$ 1500.00 - \$ 2500.00



Lot #459: REGENCY CARVED, PAINTED AND PARCEL-GILT OCTAGONAL TOP TABLE

The cafe au lait and ivory top with gilt-applied edge, the vase and spiral-fluted stem on 3-arm base with reeded brackets and tripod lion's legs; 25 1/2 x 17 1/2 in. Provenance: From the collection of Mr. Gordon Getty.
Estimate: \$ 800.00 - \$ 1200.00



Lot #460: PAIR OF EDWARDIAN INLAID SATINWOOD TWO-TIER TABLES

Each circular galleried top with diagonal checkered stringing, above a shelf and raised on tripod inlaid legs ending in brass lion's paw casters; 27 1/2 in., 18 in. diam. Provenance: From the collection of Mr. Gordon Getty.
Estimate: \$ 700.00 - \$ 900.00

[To Top](#)

[Back](#)

[Next](#)

Lots 461 - 470



Lot #461: WILLIAM IV INLAID MAHOGANY CELLARET ON STAND

The cross-banded hinged top and front raised on a gadroon stand with ringed and spiral reeded legs ending in brass cup casters; 23 x 21 x 12 3/4 in.

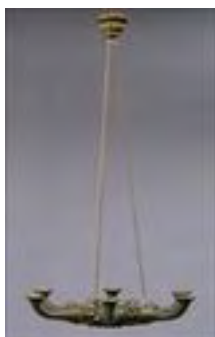
Estimate: \$ 1500.00 - \$ 2500.00



Lot #462: PAIR OF NEOCLASSICAL- STYLE AMETHYSTINE QUARTZ AND GLASS-MOUNTED GILTWOOD TWO- LIGHT WALL APPLIQUES

Each tapered mirror glass-backed trellis back plate supporting the leafy s-scroll metal arms ending in leafy nozzles; 21 x 11 1/2 x 8 in.

Estimate: \$ 800.00 - \$ 1200.00



Lot #463: ITALIAN NEOCLASSICAL CARVED, GREEN PAINTED AND PARCEL-GILT SIX-LIGHT CHANDELIER

The shallow bowl, carved on the underside with a Medusa head with snake-entwined hair, supporting the arms spaced by grotesque masks and joined to ceiling plate by chains; approx. 4 ft. 9 in., 35 in. diam.

Estimate: \$ 1200.00 - \$ 1800.00



**Lot #464: PAIR OF ITALIAN
NEOCLASSICAL-STYLE GILTWOOD
LAMPS**

Each urn-form bowl incised with leaf tips, waisted neck and stem and square base; 7 1/2 x 3 in.

Estimate: \$ 400.00 - \$ 600.00



**Lot #465: TWO NEOCLASSICAL
CARVED ALABASTER VASES**

Both now fitted as lamps, electrified with a bulb in the interior. The largest 16 x 9 1/2 in., the second, 15 1/2 x 12 in. Provenance: Property from the collection of Bronson Pinchot.

Estimate: \$ 800.00 - \$ 1200.00



**Lot #466: SINGLE NEO-CLASSICAL
CARVED ALABASTER VASE**

Now fitted as a lamp, electrified with a bulb in the interior; 32 1/4 x 15 in. Provenance: Property from the collection of Bronson Pinchot.

Estimate: \$ 800.00 - \$ 1200.00



**Lot #467: NEOCLASSICAL-STYLE
ALABASTER HANGING FIXTURE**

The hemispherical bowl with channeled rim and sloping shoulder, the interior 3 lights attached to ropework supports joined to ceiling cap; approx. 24 1/2 in., 21 3/4 in. diam.

Provenance: Property from the collection of Bronson Pinchot.

Estimate: \$ 800.00 - \$ 1200.00



**Lot #468: NEOCLASSICAL-STYLE
CARVED, SILVERED AND PARCEL-
GILT CORINTHIAN CAPITAL TABLE
WITH MARBLE TOP**

The rectangular pink and grey mottled top,
above inverted tiered leaf and scroll capital; 19
x 28 1/2 x 25 1/2 in.

Estimate: \$ 800.00 - \$ 1200.00



**Lot #469: ITALIAN NEOCLASSICAL
CARVED, PAINTED AND GILTWOOD
SETTEE**

The 3 paneled back within husk bands on gilt
ground flanked by paneled arms, the narrow
seat above grapevine rails and raised on vase
and fluted legs; 30 x 5 ft. 11 in. 18 in.

Estimate: \$ 1000.00 - \$ 1500.00



**Lot #470: PAIR OF SAMSONS FAMILLE
ROSE ARMORIAL PORCELAIN LAMPS**

Each baluster-form bowl enameled with
colorful floral sprays and puce diaper borders,
with bianco sur bianco moldings, silvered wood
bases; 30 1/2 in.

Estimate: \$ 1000.00 - \$ 2000.00

[To Top](#)

[Back](#)

[Next](#)

Lots 471 - 480



**Lot #471: ITALIAN NEOCLASSICAL
WALNUT AND PARCEL-GILT
KNEEHOLE DESK**

The rectangular molded top above a 5-drawer kneehole with gilt with petal-tip moldings and an applied husk lower edge continuing around into rear, raised on round, tapered legs with fluted capitals; 31 1/2 x 5 ft. 2 1/2 in. x 26 3/4 in.

Estimate: \$ 3000.00 - \$ 5000.00



**Lot #472: CONTINENTAL PAINTED
CRESTING WITH ARMORIAL AT
CENTER**

24 in. x 5 ft. 4 in.

Estimate: \$ 1200.00 - \$ 1800.00



**Lot #473: SET OF FOUR EMPIRE-STYLE
BRONZE AND GILT-BRONZE FOUR-
LIGHT WALL APPLIQUES**

Each circular leaf-cast plate supporting an orb from which radiate the light arms, with stylized vinework; 6 1/4 x 11 1/2 x 10 3/4 in.

Estimate: \$ 1800.00 - \$ 2200.00



**Lot #474: ITALIAN NEOCLASSICAL
CARVED OAK COMMODOE**

The top with inset rounded front corners and applied edge, above a guilloche-carved shallow drawer and 3 long drawers with raised bell-flower rondel and brass ring drop handles, on short fluted front leg; 37 3/4 x 4 ft. 7 1/4 in. x 24 in.

Estimate: \$ 2500.00 - \$ 3500.00



**Lot #475: ITALIAN NEOCLASSICAL
CARVED OAK OPEN ARMCHAIR**

The stepped top rail with urn and husk swags in relief flanked by padded armrests, the seat with brass nail head upholstery on round stop-fluted legs; 37 1/2 x 26 x 21 in.

Estimate: \$ 500.00 - \$ 700.00



**Lot #476: PARIS PORCELAIN FINELY
PAINTED SCENIC VASE, MOUNTED AS
A LAMP**

The ovoid bowl with 2 scenes, the one with fisherman, an arched bridge and towers on rocky outcrop, the other with deer and distant mountain, winged cherub head handles, etched base, on later brass stand; vase: 15 1/2 in., overall: 33 in.

Estimate: \$ 800.00 - \$ 1200.00



**Lot #477: SET OF EIGHT CONTINENTAL
SIDE CHAIRS**

Each serpentine cresting rail above a vase-shaped splat, the rush seat raised on angular front cabriole legs.

Estimate: \$ 1500.00 - \$ 2500.00



**Lot #478: NEOCLASSICAL-STYLE
CARVED PAINTED AND PARCEL-GILT
PIER MIRROR**

The arched plate flanked by 1/2-round Ionic stop-fluted columns supporting a flat cornice, the base with drapery swags, on toupie feet; 47 1/2 x 28 in.

Estimate: \$ 700.00 - \$ 1000.00



**Lot #479: PAIR OF CONTINENTAL
PAINTED DEMILUNE CONSOLE
TABLES**

Each with beaded edges and raised on square tapering legs; 30 1/2 x 46 1/2 x 23 in.

Estimate: \$ 1000.00 - \$ 1500.00



**Lot #480: CONTINENTAL
NEOCLASSICAL PROVINCIAL CHERRY
DINING TABLE**

The 2-plank overhang top above a box frieze with central drawer with brass pull, on square tapered legs; 27 1/4 x 4 ft. 11 in. x 30 3/4 in.

Estimate: \$ 1000.00 - \$ 1500.00

[To Top](#)

[Back](#)

[Next](#)

Lots 481 - 490



Lot #481: ITALIAN NEOCLASSICAL INLAID WALNUT COMMODE

The crossbanded top with stringing and central oval and line-inlaid edge, above 3 drawers with crossbanding and brass oval beaded drop handles, on tapered fluted legs; 41 3/4 x 4 ft. 3 1/4 in. x 24 in.

Estimate: \$ 3000.00 - \$ 5000.00



Lot #482: PAIR OF PORCELAIN BALUSTER-FORM LAMPS

Each ovoid bowl with blue-ribbon hung garden trophies, supporting floral swags, bronze-patinated metal bases; 29 in.

Estimate: \$ 1000.00 - \$ 2000.00



Lot #483: ITALIAN NEOCLASSICAL- STYLE GILT-METAL MOUNTED EBONIZED AND PARCEL-GILT TORCHERE

The circular top with Vitruvian scrollwork band on central spiral reeded support and 3 paneled legs surmounted by lion's heads, joined by a platform and ending in paw feet; 40 in., 11 1/2 in. diam.

Estimate: \$ 700.00 - \$ 900.00



Lot #484: DIRECTOIRE-STYLE GREY-PAINTED BERGERE A L'OREILLES

The shaped wings continuing down to padded arms on free-standing vase supports, the seat on paneled rails and short tapered legs, surmounted by diamond medallions; 36 1/2 x 24 in.

Estimate: \$ 600.00 - \$ 800.00



Lot #485: DIRECTOIRE WALNUT THREE-TIER TABLE

The rectangular top with wooden gallery raised on turned legs; 30 x 8 1/4 x 11 in.

Estimate: \$ 600.00 - \$ 800.00



Lot #486: BIEDERMEIER FRUITWOOD SETTEE WITH PENWORK PLAQUES

The curved top rail with scroll ends, and eagle panel and lion head rondels, the seat flanked by free-standing black lacquer columns with gilt leaf-tip capitals, beneath Cupid plaques, on block feet; 39 in., 5 ft. 10 in. x 29 in.

Estimate: \$ 1500.00 - \$ 2500.00



Lot #487: DIRECTOIRE CREAM-PAINTED AND PARCEL-GILT CENTER TABLE

The top fitted with a rectangular veined marble panel above a frieze with gilt urns within oblong blue diamond bands, raised on round, tapered legs surmounted by pendant leaf collars and reeded rondels; 31 x 35 1/4 x 23 1/2 in.

Estimate: \$ 1000.00 - \$ 1500.00



**Lot #488: BIEDERMEIER SYCAMORE
AND EBONIZED WOOD CHEST OF
DRAWERS**

The rectangular top above 3 drawers with brass heart-form key escutcheons, and an ebonized applied lower edge, raised on square tapered legs; 34 x 41 1/2 x 19 in.

Estimate: \$ 1800.00 - \$ 2200.00



**Lot #489: BIEDERMEIER WALNUT
DAYBED**

With tiered s-scroll rest, the padded seat on plain rails raised on black legs with applied feet; 34 in. x 6 ft. 8 in.

Estimate: \$ 2000.00 - \$ 3000.00



**Lot #490: PAIR OF BIEDERMEIER-
STYLE INLAID SATINWOOD
ARMCHAIRS AND FOUR MATCHING
SIDE CHAIRS**

Each out scroll top rail above stick and central splat with classical figures, the seat on plain rail and splayed legs; 33 1/2 x 22 3/4 in. and 32 1/4 x 17 1/2 in.

Estimate: \$ 800.00 - \$ 1200.00

[To Top](#)

[Back](#)

[Next](#)

Lots 491 - 500



Lot #491: BIEDERMEIER INLAID FRUITWOOD CENTER TABLE

The fixed circular overhanging top above shallow line-inlaid frieze, the triangular concave-sided line-inlaid pedestal on conforming base and block feet; 28 1/2 in., 40 1/4 in. diam.

Estimate: \$ 700.00 - \$ 900.00



Lot #492: SWEDISH NEOCLASSICALFOUR-DRAWER PAINTED COMMODE

The rectangular top above 4 drawers flanked by quarter columns raised on bracket feet; made up of old parts; 28 x 28 x 15 in.

Estimate: \$ 1500.00 - \$ 2000.00



Lot #493: PAIR OF BIEDERMEIER INLAID WALNUT SIDE CHAIRS

The pair with openwork backrests with line inlay above padded seats and sabre legs.

Provenance: Property from the collection of Gordon Getty.

Estimate: \$ 700.00 - \$ 900.00



Lot #494: EMPIRE-STYLE GILT-METAL MOUNTED ALABASTER CHANDELIER

The egg-and-dart ring fitted with a shallow alabaster bowl, joined to the ceiling plate by 3 reeded rods; approx. 23 in., 23 in. diam.

Estimate: \$ 1000.00 - \$ 2000.00



**Lot #495: EMPIRE MAHOGANY
PEDESTAL CENTER TABLE**

The circular top on triangular flared pedestal with incised lines, resting on concave-sided base and scroll feet, applied with rondels; 29 1/2 in., 40 in. diam.

Estimate: \$ 1000.00 - \$ 1500.00



**Lot #496: EMPIRE-STYLE BRONZE AND
GILT-METAL TEN-LIGHT
CHANDELIER**

The shallow dish support with applied drapery-swag rim and supporting the swan-form arms, centering the figure of a lady with a hat, joined to ceiling plate by reeded rods; approx. 22 1/2 x 32 in.

Estimate: \$ 2500.00 - \$ 4500.00



**Lot #497: EMPIRE-STYLE GILTWOOD
MIRROR WITH EGLOMISE PLATES**

Incorporating a rectangular and an arched plate with gilt urn and husk swags, the border plates with swans, rosettes and tiered leaf branch decorations; 4 ft. 1 in. x 37 in.

Estimate: \$ 700.00 - \$ 1000.00



**Lot #498: PAIR OF EMPIRE-STYLE GILT-
BRONZE BOUILLOTTE LAMPS**

Each pierced dish-shaped base centering a fluted stem and rod from which rise the arms with eagle heads supporting the urn nozzles, with adjustable black-ground tole shade; 27 in., 16 in. diam.

Estimate: \$ 1500.00 - \$ 2500.00



**Lot #499: CHARLES X MARQUETRY-
INLAID BIRD'S EYE MAPLE DROP-
LEAF CENTER TABLE**

The top with foliate central medallion and corners, the reeded vase stem on cruciform legs with pierced 1/4 sun ray brackets; 29 x 19 1/2 x 25 1/2 in.

Estimate: \$ 2500.00 - \$ 3500.00



**Lot #500: PAIR OF EMPIRE GILT-
METAL MOUNTED MAHOGANY
DEMILUNE CONSOLE TABLES**

Each verde antico marble top above a frieze drawer, raised on column supports with flower-head die cast capitals and bases, on mirror-backed platform; 34 1/4 x 38 x 14 1/2 in.

Estimate: \$ 1800.00 - \$ 2200.00

[To Top](#)

[Back](#)

[Next](#)