

Lots 501 - 510



Lot #501: LARGE PAINTED AND PARCEL-GILT BRACKET

The long rectangular top with stop fluted molding above a v-shaped carved support; 23 x 54 x 9 in.

Estimate: \$ 600.00 - \$ 800.00



Lot #502: VICTORIAN PAPIER-MACHÉ URN, MOUNTED AS A LAMP

The ovoid grey-ground bowl with 2 scenes of pairs of Renaissance lovers flanked by gilt vinework, fitted to a giltwood base; overall: 30 3/4 in., urn: 15 in.

Estimate: \$ 600.00 - \$ 800.00



Lot #503: VICTORIAN BAMBOO MANTLEPIECE AND OVERMANTEL MIRROR

The mirror with pagoda crest, the rectangular shelf above the hearth recess applied with satsumaware rondels and lacquer panels, the sides with lacquer mask heads and panels; 8 ft. 10 1/2 x 4 ft. 8 in. x 18 1/2 in.

Estimate: \$ 3000.00 - \$ 5000.00



Lot #504: VICTORIAN MOTHER-OF-PEARL INLAID PAPIER MACHE SEWING TABLE

The hinged scalloped top with floral sprays, opening to fabric-lined compartmented interior, above a pleated spool drawer and lyre supports; 32 1/4 x 19 1/4 x 15 in.

Provenance: From the collection of Mr. Gordon Getty.

Estimate: \$ 800.00 - \$ 1200.00



Lot #505: VICTORIAN-STYLE BRASS-MOUNTED CAMPAIGN DESK

The top with gold-tooled leather panel and a brass edge above a leather-lined pull-out slide and 2 frieze drawers, each pedestal with 3 drawers at one front and a door at reverse, on plinth; 31 1/4 x 4 ft. 3 in. x 35 in.

Estimate: \$ 1000.00 - \$ 1500.00



Lot #506: PAIR OF VICTORIAN GILT HANGING SHELVES

Each incorporating three mirror-backed shelves on "bamboo" supports, with ribbon-looped crest and ribbon swags at base; 26 x 11 1/2 x 5 1/2 in.

Estimate: \$ 500.00 - \$ 700.00



Lot #507: VICTORIAN BRASS-MOUNTED BURRWOOD DRESSING CHEST WITH SILVER-LIDDED GLASS FITMENTS

The hinged lid with engraved lion armorial opening to a hinged tooled leather flap and a mirror, above a removable tray and compartments fitted with 10 silver-lidded glass boxes or bottles, possibly Thomas Dexter, London, 1843; on later stand; 6 x 14 x 10 1/4 in., overall: 22 x 14 3/4 x 11 1/4 in.

Estimate: \$ 2000.00 - \$ 3000.00



Lot #508: MAHOGANY VICTORIAN KNEEHOLE DESK

The narrow rectangular top with gold tooled green leather panel above 9 drawers, knee hole front with cock beading and brass ring drop handles centering a recessed door, on plinth; 30 1/4 x 4 x 20 3/4 in.

Estimate: \$ 1800.00 - \$ 2200.00



**Lot #509: VICTORIAN-STYLE ROSEWOOD
CURULE STOOL**

The rectangular tufted seat above arcaded rails and curule legs joined by an h-stretcher; 17 x 37 x 18 in.

Estimate: \$ 1000.00 - \$ 2000.00



**Lot #510: TURKISH EXPORT ENAMELED
BRASS AND COPPER AND EBONY-VENEERED
PEDESTAL TABLE**

The octagonal tray top with central rondel and 8 fan-shape panels in tones of ivory, yellow, pink and blue, within gadroon edge, the turned and leaf-carved stem on concave-sided base and claw feet; 27 1/4 x 27 3/4 in.

Provenance: From the collection of Mr. Gordon Getty.

Estimate: \$ 400.00 - \$ 600.00

[To Top](#)

[Back](#)

[Next](#)

Lots 511 - 520



Lot #511: CONTINETAL BLUE AND CREAM PAINTED TRIPOD TABLE

The circular top with shaped apron raised on reeded stem and 3 reeded legs; 25 1/2 x 17 in.
Estimate: \$ 200.00 - \$ 400.00



Lot #512: ART NOUVEAU GILT-BRONZE TABLE LAMP

The leaf-clad columnar stem on flared leaf-fluted base encircled by egg-and-dart band, fitted with pleated fabric shade, weighted; 26 1/4 in., 9 in. diam. of base. Note: Property sold to benefit the Brooklyn Museum.
Estimate: \$ 800.00 - \$ 1200.00



Lot #513: PAIR OF EDWARDIAN CARVED GILTWOOD TUB-BACK BERGERES

Each curved back with leaf-bound reeded rail continuing around into the armrests, the bow-fronted seat above floral garlands and fluted front legs, stamped ER (Edward VIII); 30 x 24 in. Provenance: H.M. Queen Alexandra (1844-1925), consort of Edward VII of England. Queen Alexandra was considered one of the most beautiful and fashionable women in Europe. In 1907, the Danish born queen and her sister the Dowager Empress of Russia purchased a villa, Hvidore, near Copenhagen, furnishing it with pieces of their respective royal homes. These chairs passed into private hands prior to the sale of Hvidore in 1925.

Estimate: \$ 1200.00 - \$ 1800.00



Lot #514: PAIR OF BAROQUE-STYLE SILVER-PLATED CANDLESTICKS

Each circular stem with flower and foliate swags beneath a broad drip pan with fluted rim, the dome base repoussé with 3 mask heads and floral garlands; 12 1/2 in., 8 1/2 in. diam.

Provenance: From the state of Fernando Sanchez.

Estimate: \$ 400.00 - \$ 600.00



Lot #515: PAIR OF CONTINENTAL BAROQUE-STYLE SILVER-PLATED BEAKERS

With pseudo hallmarks: each tapered bowl with petal tip lip, repoussé flowerheads and c-scrolls, molded foot; 10 7/8 in., 4 3/4 in. diam.

Provenance: From the estate of Fernando Sanchez.

Estimate: \$ 300.00 - \$ 500.00



Lot #516: PAIR OF GEORGE II ARMORIAL SILVER BERRY DISHES

Maker's mark rubbed off on one and unclear on the other, G.W. in gothic beneath 3-ball crown, London, 1744: each with scalloped and flute gallery centering rearing lion rising from crenellated tower, holding a flag beneath a crown, on tripod scroll feet; 2 1/4 in., 10 1/8 in. diam., approx. 34 oz.

Estimate: \$ 800.00 - \$ 1200.00



Lot #517: GEORGE II WOOD-HANDLED SILVER BRANDY WARMER

Probably John Gammon, London, 1730: the squat pear-form bowl with bracket spout and raised silver and turned wood handle; 2 1/8 x 6 in., approx. 3.04 oz.

Estimate: \$ 350.00 - \$ 450.00



Lot #518: GEORGE III ARMORIAL SILVER HOT WATER KETTLE ON STAND

John Emes, London, 1794 and 1799: the part-reeded bowl with leaf scroll and loose ring handles, with reeded spigot, the cover with falcon knop, on reeded legs ending in lion's paw feet centering a removable warmer, on ring stand, the concave base on ball feet, 1913 inscription on underside; 16 5/8 x 14 in., over 115 oz.

Estimate: \$ 2500.00 - \$ 3500.00



Lot #519: PAIR OF ENGLISH ARMORIAL SILVER-PLATED WINE BOTTLE COASTERS

Each shallow footed bowl with beaded ring, pierced flute border and rearing horse holding a crown, within belted surround and Greek fret border, mark I.D. & S.; 2 3/4 in., 8 in. diam.

Estimate: \$ 300.00 - \$ 500.00



Lot #520: TWO IRISH SMALL PLATES

The smaller possibly Matthew West, Dublin, undated, with spiral flute and beaded border, the other marks rubbed, Dublin, with engraved grape cluster armorial fluted cavetto and scalloped everted rim; 4 1/8 and 5 in. diam., approx. 4.05 oz.

Estimate: \$ 250.00 - \$ 350.00

[To Top](#)

[Back](#)

[Next](#)

Lots 521 - 530



Lot #521: SCOTTISH GEORGE III SILVER GOBLET

John McDonald, Edinburgh, 1815, the shaped part-reeded bowl with molded lip, flared stem and circular foot; 6 3/4 in., 3 3/8 in. diam.

Provenance: From the estate of Margaret Truman-Daniel.

Estimate: \$ 250.00 - \$ 350.00



Lot #522: SET OF THREE REGENCY SILVER SALTS AND FOUR AUSTRIAN SILVER SALTS

The 3 marked W.E., London, 1817, with dipped gadroon rims and reeded bases, the Austrian group comprising a pair of 2-handled boat-form, another stemmed boat-form and the last with circular roll-over rim, date marks rubbed, 18__; 2 to 3 1/4 in., approx. 22 oz.

Estimate: \$ 500.00 - \$ 800.00



Lot #523: THREE AUSTRIAN SILVER SNUFF BOXES AND A GEORGE IV SILVER BOX

The 3 variously engraved with "Thesus-Tempel," or rococo scrollwork and inscribed "Duesay Rezso," the George IV marked TB Birmingham, 1825, with reeded surface centering blind rectangle; 2 5/8 to 3 1/4 in., approx. 8.05 oz.

Estimate: \$ 500.00 - \$ 800.00



**Lot #524: CONTINENTAL SILVER
CIGARETTE CASE**

The woven basketweave case with sapphire thumb piece, 5 impressed marks; 1/2 x 4 3/4 x 3 1/4 in.

Estimate: \$ 600.00 - \$ 800.00



**Lot #525: TIFFANY AND CO. SILVER
EXTENSIVE FLATWARE SERVICE IN
THE "ENGLISH KINGS" PATTERN**

Comprising 18 hollow-handled dinner knives, 18 hollow-handled lunch knives, 18 steak knives, 18 fruit knives, 18 dessert knives, 17 butter knives, 16 dinner forks, 17 lunch forks, 18 fish forks, 18 cake forks, 18 salad forks, 18 oyster forks, 18 teaspoons, 18 iced tea spoons, 18 table spoons, 17 cream soup spoons, 18 bullion spoons, 18 grapefruit spoons, 18 demitasse spoons, 2-piece carving set and 1 cake server, 339 pieces; approx. 395 oz., excluding knives and servers.

Estimate: \$ 10,000.00 - \$ 15,000.00



**Lot #526: TWELVE FRENCH
MONOGRAMMED SILVER-GILT
LUNCH FORKS WITH IVORY HANDLES**

In the Renaissance-style, with lion-head collars and grotesque mask terminals, the reverse chased with acanthus foliage; together with a Georg Jensen Acorn pattern cake server, an English silver-gilt server, C.J.V.; London, 1969, and an American Server; 8 1/4 in.

Estimate: \$ 200.00 - \$ 300.00



**Lot #527: ENGLISH SILVER-PLATED
GALLERIED TRAY**

The oval surface within pierced surround with roll-over handles, on 4 bun feet; 3 5/8 x 27 1/2 in.

Estimate: \$ 300.00 - \$ 400.00



**Lot #528: AMERICAN MONOGRAMMED
SILVER TRAY**

Retailed by Bailey, Banks & Biddle: of oblong serpentine outline with applied shell and foliate border, centering script monogram; 21 1/2 x 17 1/2 x 13 1/2 in.

Estimate: \$ 400.00 - \$ 600.00



**Lot #529: GROUP OF ENGLISH SILVER
SMALL TABLE ARTICLES**

James Robinson, London, 1965 and 1966; comprising 4 chamber candlesticks, 4 octagonal trencher salts, and 4 baluster-form pepperettes; 1 1/4 to 4 1/8 in. x 1 3/4 to 3 in., approx. 41 oz.

Estimate: \$ 400.00 - \$ 600.00



**Lot #530: TWO ENGLISH SILVER-
PLATED TWO-HANDLED TEA TRAYS**

The one by TB & Co., of chamfered rectangular outline with molded rim and engraved bands, the other Mappin and Webb's Prince's plate, with serpentine gadroon rim and central armorial; 27 1/2 and 28 in.

Estimate: \$ 300.00 - \$ 400.00

[To Top](#)

[Back](#)

[Next](#)

Lots 531 - 540



Lot #531: SET OF TWELVE BUCCELLATI SILVER SERVICE PLATES

With serpentine molded rims; 12 in. diam., approx. 270 oz.

Estimate: \$ 4000.00 - \$ 6000.00



Lot #532: PAIR OF LATIN AMERICAN SILVER-PLATED COLUMN-FORM SHORT CANDLESTICKS

Each reeded stem with cylindrical nozzle and square removable drip pan, on square part-reeded weighted base; 6 5/8 x 3 1/2 in.

Provenance: From the estate of Fernando Sanchez.

Estimate: \$ 400.00 - \$ 600.00



Lot #533: PAIR OF CONTINENTAL SILVER COLUMN-FORM CANDLESTICKS

Impressed Schiff and 13: each flared reeded stem with shell, cabochon and scroll nozzle and removable drip pan, the quadruple footed base on attached concave-sided stand; 11 3/4 x 6 3/8 in., approx. 30 oz. Provenance: From the estate of Fernando Sanchez.

Estimate: \$ 800.00 - \$ 1200.00



**Lot #534: BAILEY, BANKS & BIDDLE CO.
EXCLUSIVE DESIGN FIVE-PIECE TEA
AND COFFEE SERVICE, MATCHING
TRAY AND KETTLE STAND**

Comprising 2 pots, covered sugar bowl, creamer and waste pail and kettle stand, and a 30 1/2 in. tray, repoussé and chased with floral garlands and with applied ribbon-bound husk bands and rose heads; 4 1/4 x 9 3/4 in., approx. 230 oz.
Estimate: \$ 3000.00 - \$ 5000.00



**Lot #535: CONTINENTAL SILVER-
STEMMED GLASS COMPOTE**

The tiered stem with lion heads, petal-tip banded dish, strawberry-banded ring and lobed base, repoussé with acanthus leaves and husks, on fluted scroll feet, the shallow bowl with sawtooth rim; 12 5/8 in., 12 1/2 in. diam.
Provenance: From the estate of Fernando Sanchez.
Estimate: \$ 600.00 - \$ 800.00



**Lot #536: PAIR OF GERMAN SILVER
FIVE-LIGHT CANDELABRA**

Each reeded column stem on flared base with husk borders, the removable five-light section with petal-tip banded drip pans and nozzles; 22 x 16 in. Provenance: From the estate of Fernando Sanchez.
Estimate: \$ 3500.00 - \$ 4500.00

Lot #537: GROUP OF EIGHT BELGIAN SILVER-PLATED TABLE ARTICLES AND TWO PLATES



The 8 retailed by Wiskemann, Bruxelles: comprising 3 graduated angular serpentine platters, the largest inscribed, "La Reserve Albert-Plaque," an oblong platter, 2 graduated oval dishes, a circular dish and a gravy boat, all with shell handles, together with 2 circular serpentine plates; 6 1/2 to 20 in. Provenance: From the estate of Fernando Sanchez. Estimate: \$ 300.00 - \$ 500.00

Lot #538: CONTINENTAL SILVER FOUR-PIECE TEA AND COFFEE SERVICE



Comprising 2 pots, a creamer and a covered sugar bowl, each ovoid bowl with ribbon-bound reed shoulder above bow-knotted ovals and flared, fluted legs ending in scroll toes; 7 1/4 to 12 in., approx. 92 oz. Provenance: From the estate of Fernando Sanchez. Estimate: \$ 800.00 - \$ 1200.00

Lot #539: PAIR OF AUSTRIAN ENGRAVED SILVER CANDLESTICKS



Each slender urn stem with tasseled swags and pendant flowers beneath an urn nozzle, the tiered base with blind oval, scrollwork and flowerheads, on pierced tripod feet; 12 3/4 in. 5 1/2 in. diam., approx. 18 oz. Provenance: From the estate of Fernando Sanchez. Estimate: \$ 500.00 - \$ 700.00



**Lot #540: TWO PAIRS OF AUSTRIAN
ENGRAVED SILVER CANDLESTICKS**

Each slender urn stem with pendant leafage and dots beneath urn nozzle, the bell-form base with blind shield and foliage, one pair on pierced tripod feet; 13 1/2 and 12 3/8 in., 5 6/8 in.

diams., approx. 36.05 oz. Provenance: From the estate of Fernando Sanchez.

Estimate: \$ 1000.00 - \$ 1500.00

[To Top](#)

[Back](#)

[Next](#)

Lots 541 - 550



Lot #541: AMERICAN MONOGRAMMED SILVER OCTAGONAL URN-FORM WATER PITCHER

Mark is EB monogram: with molded serpentine rim, double scroll handle and dome base; 10 3/4 in., approx. 24 oz. Provenance: From the estate of Fernando Sanchez.

Estimate: \$ 250.00 - \$ 350.00



Lot #542: FRENCH SILVER FIGURE ON STAND

Impressed with crowned 'P' within cartouche and another rubbed mark: modeled as an 18th c. gentleman wearing a chained Maltese cross and holding a scroll engraved with buildings, on triangular husk-hung and foliate repoussé base; 7 x 3 7/8 in., approx. 6 oz. Provenance: From the estate of Fernando Sanchez.

Estimate: \$ 250.00 - \$ 450.00



Lot #543: AUSTRIAN ENGRAVED SILVER TALL CANDLESTICK

The flared hexagonal stem with 5-petaled flowerheads, beneath an urn nozzle with saw tooth band, the drum lower section with tassels, on bell-form base and pierced tripod feet; 16 3/4 in., 6 1/2 in. diam. Provenance: From the estate of Fernando Sanchez.

Estimate: \$ 400.00 - \$ 600.00



Lot #544: PAIR OF CONTINENTAL SILVER-PLATED CANDLESTICKS

Each column with die-cast band of acanthus leaves, beneath an urn nozzle with grapevines, the weighted base also with grapevines, impressed on base; 11 1/2 in., 5 in. diam.

Provenance: From the estate of Fernando Sanchez.

Estimate: \$ 300.00 - \$ 400.00



Lot #545: GORHAM SILVER FOUR-PIECE TEA AND COFFEE SERVICE AND A REED AND BARTON TRAY

Variously impressed with hour glass, pitcher and key for 1901, 1903 and 1906: each of footed pear-form, repoussé and chased with baroque flowers and scrolls, the 2-handled tray with blind cartouche and strapwork, notched corners; 6 1/8 to 9 3/4 in.

Estimate: \$ 2500.00 - \$ 3500.00



Lot #546: AMERICAN SILVER STEMMED FRUIT BOWL

Retailed by Chester Billings & Son: the fluted bowl with everted pierced waved border, repoussé with flowers and scrolls, the domed base with conforming border; 6 3/4 in., 15 1/2 in. diam., approx. 65 oz.

Estimate: \$ 2000.00 - \$ 3000.00



Lot #547: ENGLISH ARMORIAL SILVER-PLATED HOT WATER KETTLE ON STAND AND AN ARMORIAL TRAY

The angular part-gadrooned bowl with engraved armorial at the shoulder, on reeded legs, joined by concave-fronted base, the tray with engraved surface, gadroon rim and reeded handles; 17 5/8 in., tray: 30 in.

Estimate: \$ 700.00 - \$ 900.00



Lot #548: GERMAN SILVER CENTERPIECE STAND

The central stem with fish scale, entrelac mask head and cornucopia bands, flanked at either side by a seated cherub holding a flambeau torch or a wreath, the shaped base with oval blind cartouches and beaded or foliate scroll feet; 9 1/4 x 13 x 10 1/4 in. Provenance: From the estate of Margaret Truman-Daniel.

Estimate: \$ 300.00 - \$ 500.00



Lot #549: FIVE GORHAM SILVER TABLE ARTICLES

Comprising a 29 in. two-handled tea tray, and a pear-form footed coffee pot, each with pentagon numeral 5 for 1955, a rococo floral-chased 4 1/2 pint water pitcher, square numeral 5 for 1945, a 1952 after dinner coffee pot and a 1956 presentation cake plate. Provenance: From the estate of Margaret Truman-Daniel.

Estimate: \$ 700.00 - \$ 1000.00

**Lot #550: BIGELOW KENNARD & SON
SILVER GILT COFFEE POT, AN
INTERNATIONAL TEAPOT AND A
CONTINENTAL TEAPOT**



The first richly repoussé with flowers and foliage above wave-form banded base, script monogram on underside, the teapot of squat spherical form, and the last of octagonal pear-form with bracket spout, wood handle and dome hinged lid, inscribed "800" on base; 4 3/8 to 10 1/4 in., approx. combined weight 71 oz. Estimate: \$ 700.00 - \$ 1000.00

[To Top](#)

[Back](#)

[Next](#)

Lots 551 - 560



**Lot #551: LAZZARO BALDI:
CONVERSION OF ST. PAUL**

Engraving on paper, 9 7/8 x 7 1/2 in. (image).

Estimate: \$ 500.00 - \$ 700.00



**Lot #552: RICHARD WESTALL (1765-
1836): PROPHETIC FIGURE**

Sepia wash over pencil on paper laid down on card stock, 7 7/8 x 5 1/4 in., initialed lower right in pencil. Provenance: Property from the estate of Professor Frank Anderson Trapp, to provide funds for the acquisition of art by the National Gallery of Art, Washington, D.C.

Estimate: \$ 300.00 - \$ 500.00



**Lot #553: EMILE VERNET (1789-1863):
STUDIES OF ZOUAVES & PUTTI**

Pencil, watercolor and ink on colored paper, 10 1/2 x 5 7/8 in. Provenance: Property from the estate of Professor Frank Anderson Trapp, to provide funds for the acquisition of art by the National Gallery of Art, Washington, D.C.

Estimate: \$ 500.00 - \$ 700.00



**Lot #554: ARY SCHEFFER (1795-1858):
SEATED WOMAN**

Graphite on paper, 8 1/2 x 6 1/8 in. Provenance: Property from the estate of Professor Frank Anderson Trapp, to provide funds for the acquisition of art by the National Gallery of Art, Washington, D.C.

Estimate: \$ 300.00 - \$ 500.00



Lot #555: CONTINENTAL SCHOOL (19TH C.): VIEW OF SINTRA

Watercolor on paper, 9 3/4 x 16 in., inscribed lower right "M. de Marialva/Paris 1811."

Provenance: Property from the estate of Professor Frank Anderson Trapp, to provide funds for the acquisition of art by the National Gallery of Art, Washington, D.C.

Estimate: \$ 800.00 - \$ 1200.00



Lot #556: JEAN LÉON GÉROME (1824-1904): PROFILE SKETCH

Red chalk on paper, 9 1/2 x 8 3/4 in., initialed in pencil. Provenance: Property from the estate of Professor Frank Anderson Trapp, to provide funds for the acquisition of art by the National Gallery of Art, Washington, D.C.

Estimate: \$ 300.00 - \$ 500.00



Lot #557: EUROPEAN SCHOOL: TWO DRAWINGS

Sepia ink wash on paper, 4 5/16 x 4 11/16 in. (sight) and 7 x 5 5/16 in. (sight), the smaller initialed lower right.

Estimate: \$ 150.00 - \$ 250.00



Lot #558: DUTCH SCHOOL: LANDSCAPE

Ink and wash on paper, 9 1/4 x 7 1/2 in. (image, sight).

Estimate: \$ 500.00 - \$ 700.00



Lot #559: DUTCH SCHOOL: FIGURAL SKETCH

Pencil on paper, 4 3/4 x 7 1/8 in. (sight).

Estimate: \$ 500.00 - \$ 700.00



Lot #560: AFTER REMBRANDT: BEGGAR WITH A WOODEN LEG

Etching on paper, 4 3/8 x 2 5/8 in. (sight),
trimmed to plate edge.

Estimate: \$ 400.00 - \$ 600.00

[To Top](#)

[Back](#)

[Next](#)

Lots 561 - 570



**Lot #561: ATTRIBUTED TO C.N. COYPEL:
FIGURE OF A DRAPED NUDE**

Crayon on paper, 7 1/2 x 10 in.

Estimate: \$ 800.00 - \$ 1200.00



**Lot #562: FOUR ARCHITECTURAL
ENGRAVINGS**

" Arco di Tito Vespasiano," after Le Grey, 6 3/4 x 8 5/8 in. (sheet), carved fragments, after Piranesi, 18 3/4 x 25 1/8 in., and 2 Italian views, after Rossini, 21 3/4 x 25 1/2 and 28 5/8 x 21 5/8 in. Provenance: Property from the estate of Professor Frank Anderson Trapp, to provide funds for the acquisition of art by the National Gallery of Art, Washington, D.C.

Estimate: \$ 400.00 - \$ 600.00



**Lot #563: LILIUM CORONA IMPERIALIS
AND PAEONIA**

Two hand-colored book plates, 13 3/8 x 8 7/8 in. (sight), both initialed in the plate lower right, H.

Estimate: \$ 200.00 - \$ 300.00



Lot #564: AFTER GOYA: PLATE 54 (THE SHAMEFACED ONE) FROM LOS CAPRICHOS

Etching and aquatint, 8 3/8 x 5 7/8 in. (plate, sight).

Estimate: \$ 500.00 - \$ 700.00



Lot #565: GERMAN SCHOOL: SHEEP IN A LANDSCAPE

Watercolor on paper, 6 3/4 x 10 7/16 in., laid down on cardboard, signed lower left, AJ Groenenwegner.

Estimate: \$ 200.00 - \$ 400.00



Lot #566: EUROPEAN SCHOOL: WINDMILLS IN THE LOWLANDS

Pastel on paper, 10 1/4 x 14 1/4 in. (sight), initialed lower right, A.B.B.

Estimate: \$ 200.00 - \$ 300.00



Lot #567: SANTIAGO HERNANDEZ (1833-1908): "CAMINO DE TLAHUAPAN"

Ink and wash on paper, 13 1/2 x 20 1/2 in. (image, sight), titled and signed lower left.

Estimate: \$ 1500.00 - \$ 2500.00



**Lot #568: AFTER J.J. TISSOT: UN
AVOCAT**

Watercolor on paper, 9 x 6 in. (sight), unsigned.

Estimate: \$ 200.00 - \$ 400.00



Lot #569: ENGLISH SCHOOL: SHRIMPS

Watercolor on paper, 10 5/8 x 8 5/8 in.,
unsigned.

Estimate: \$ 150.00 - \$ 250.00



**Lot #570: EUROPEAN SCHOOL: THREE
DRAWINGS**

The 1st two, ink and wash, 7 x 10 in. and
charcoal on paper 15 1/2 x 11 in. both stamped
JFM, the third, red chalk, 9 7/8 x 15 3/4 in.

Estimate: \$ 200.00 - \$ 400.00

[To Top](#)

[Back](#)

[Next](#)

Lots 571 - 580



Lot #571: ITALIAN SCHOOL: ANCIENT ARTIFACTS

Six engravings on paper, 7 1/2 x 11 1/4 in. (sight), each labeled in the plate, Roccheggiani fecit.

Estimate: \$ 400.00 - \$ 600.00



Lot #572: DOBBS PUBLISHING: SET OF FOUR ENGLISH BOTANICAL LITHOGRAPHS

Borders embossed with husk garlands, butterflies and birds at the corners, matted and giltwood frames, 2 embossed "Dobbs London," sight: 7 1/2 x 5 in., frame: 17 1/2 x 14 in.

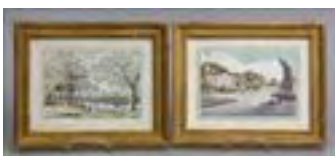
Estimate: \$ 400.00 - \$ 600.00



Lot #573: G. NICHOL, PUBLISHER: TWO VIEWS OF CHINESE SUBURBS

Engravings with hand-coloring, 11 1/8 x 17 1/4 in. (image, sight).

Estimate: \$ 400.00 - \$ 600.00



Lot #574: JOANNES CONRAD: VIEWS OF COUNTRY HOUSES

Suite of 8 watercolors, signed or initialed and numbered 1-8, giltwood frame; 9 x 11 1/4 in., sight: 6 3/4 x 9 in.

Estimate: \$ 700.00 - \$ 900.00



Lot #575: SET OF EIGHT ITALIAN HAND-COLORED ENGRAVINGS: "FAMIGLIE NOBILI"

Plates 1, 23, 25, 31, 34, 36, 53 and 66, each displaying 16 noble coats of arms, matted and framed; 23 1/2 x 17 1/4 in., impression: 14 3/4 x 9 1/2 in.

Estimate: \$ 800.00 - \$ 1200.00



Lot #576: FIVE FRENCH HAND-COLORED ENGRAVINGS

" Marine Pavilions," by Benard, after Goussier, contained in giltwood frames; 16 1/2 x 11 1/4 in. and 10 x 14 in.

Estimate: \$ 600.00 - \$ 800.00



Lot #577: HELENE MASS (b. 1871): VILLAGE STREET

Lithograph in colors, 12 1/4 x 15 1/4 in. (image, sight), initialed in the plate and inscribed and signed in pencil below the image.

Estimate: \$ 200.00 - \$ 300.00



Lot #578: AFTER JEAN DUPLESSI-BERTAUX (C.1747-C.1820): BATTLE OF AUSTERLITZ, 2 DECEMBER 1805

Engraving on silk with hand coloring, 18 1/8 x 11 1/8 in. (image, sight).

Estimate: \$ 300.00 - \$ 500.00



Lot #579: AMERICAN STICED AND PRINTED SILK PANEL: "NATIONAL FLAGS"

Some inscribed, "Factory No. 2153, Third Dist. NY," worked with 77 flag panels, laid down on silk backing, in giltwood frame; 24 x 25 1/2 in.
Estimate: \$ 300.00 - \$ 500.00



Lot #580: AFTER JEAN LURCAT: "LE COQ"

Tapestry panel, unsigned, worked with a brightly patterned cock, on a tan ground; 4 ft. 8 1/4 in. x 3 ft. 2 1/4 in.
Estimate: \$ 2500.00 - \$ 3500.00

[To Top](#)

[Back](#)

[Next](#)

Lots 581 - 590



Lot #581: NEEDLEWORK RUG

Centered by a colorful floral spray, within chain and floral border; 4 ft. 3 in. x 3 ft. 7 in.

Provenance: Property from the collection of Gordon Getty.

Estimate: \$ 400.00 - \$ 600.00



Lot #582: NEEDLEWORK LONG RUG

Worked with central rosettes, c-scrolls, lilies and other flowers and lyres, within tassled trellis border; 7 ft. 2 in. x 4 ft. 7 in. Provenance:

Property from the collection of Gordon Getty. .

Estimate: \$ 400.00 - \$ 600.00



Lot #583: MACHINE-WOVEN NEEDLEPOINT RUG

The pink and green rosettes and wreaths within cream surround on pink ground scrollwork borders; approx, 7 ft. 7 1/2 in. x 5 ft. 5 3/4 in.

Estimate: \$ 300.00 - \$ 500.00



Lot #584: NEEDLEWORK AUBUSSON CARPET

Centered by a colorful floral spray within husk oval anchored to a tan-ground, the rose Pompadour borders worked with floral rondels and architectural panels; approx. 13 ft. 10 1/2 in. x 9 ft. 10 in.

Estimate: \$ 800.00 - \$ 1200.00



Lot #585: AUBUSSON CARPET

The ivory field worked with alternating floral wreaths and beaded ring medallions, within ribbon-bound reeded border; approx. 12 ft. 6 1/2 in. x 9 ft. 1 1/4 in.

Estimate: \$ 800.00 - \$ 1200.00



Lot #586: FOUR FLOWER-WORKED TAPESTRY-COVERED THROW PILLOW

The pair: 12 x 19 in., 13 x 16 in. and 12 1/2 x 19 in.

Estimate: \$ 800.00 - \$ 1200.00



Lot #587: TEKKE TURCOMAN RUG

The wine red field worked with 3 rows of 8 gulls; 4 ft. 2 1/2 in. x 5 ft. 6 1/2 in.

Estimate: \$ 100.00 - \$ 200.00



Lot #588: CAUCASIAN RUNNER

Worked with 5 conjoined octagonals in oatmeal and terracotta, on a cobalt ground, primary latch border and terracotta or brown guard borders; 3 ft. 5 in. x 7 ft. 9 1/2 in.

Estimate: \$ 700.00 - \$ 900.00



Lot #589: NORTHWEST PERSIAN LONG RUG

The cobalt field with lattice overlay, within primary ivory flowerhead and vine border and 2 brick-ground meander borders; approx. 13 ft. 2 in. x 6 ft. 6 1/2 in.

Estimate: \$ 1000.00 - \$ 2000.00



**Lot #590: PERSIAN IVORY-GROUND
SMALL CARPET**

Worked with stylized flowers and leafage
within 6 borders; approx. 9 ft. 10 1/2 in. x 6 ft.
7 in.

Estimate: \$ 1500.00 - \$ 2500.00

END OF AUCTION

[To Top](#)

[Back](#)