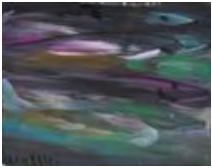


Lots 201 - 210



Lot #201: JOSEPH RAFFAEL (b. 1933): GOLDFISH

Lithograph in color on gray toned paper, signed in yellow pencil, 12 x 16 1/4 in. (sheet), numbered 23/40 and dated 1980.
Estimate: \$ 200.00 - \$ 300.00



Lot #202: MERTON CLIVETTE (1868-1931): GROUP FISH #105

Gouache on paper, 22 5/8 x 28 3/8 in. (sheet), signed. Provenance: Estate of Merton Clivette; thence by descent in the family. For more information see Stair auction, December 4, 2010, lots 138 – 152.
Estimate: \$ 500.00 - \$ 1000.00



Lot #203: GEORGE COPELAND AULT (1891-1948): PROVINCETOWN WATERFRONT

Watercolor and pencil on paper, 15 1/2 x 18 in. (sight), signed and dated '21 in pencil. Note: Proceeds from sale to benefit the Olana Partnership.
Estimate: \$ 1500.00 - \$ 3000.00



Lot #204: 20TH C. SCHOOL: BEACHSCAPE WITH SAILBOATS

Gouache on paper, 8 1/4 x 11 1/4 in. (image), signed Wimercuse and dated 1946.
Estimate: \$ 200.00 - \$ 300.00



Lot #205: FRENCH SCHOOL: "RETOUR DU CHATEAU D'ARQUES"

Watercolor on paper, 7 1/8 x 10 1/4 in., signed Fabritzius and dated '65 and with Shepard Gallery, NYC exhibition label on verso. Provenance: Estate of Louis S. Auchincloss
Estimate: \$ 300.00 - \$ 500.00



Lot #206: FRENCH SCHOOL: VIEW OF VERSAILLES/WESTERN FACADE

Pen and ink with watercolor on paper, 12 1/4 x 18 in. (image), unsigned.
Estimate: \$ 700.00 - \$ 900.00



Lot #207: ENGLISH SCHOOL: THE RYE HOUSE
Charcoal on toned paper, 10 x 14 1/2 in. (image), unsigned.
Estimate: \$ 400.00 - \$ 600.00



Lot #208: BRITISH SCHOOL: PRIMITIVE CASTLE VIEW
Watercolor on paper, 16 5/8 x 20 5/8 in. (sight).
Estimate: \$ 300.00 - \$ 600.00



Lot #209: BENJAMIN WILLIAMS LEADER (1831-1923): FIGURES ON A PATH THROUGH THE WOODS
Watercolor on paper, 9 1/4 x 13 1/4 in. (sight), signed and dated 1894.
Estimate: \$ 200.00 - \$ 400.00



Lot #210: JAMES A.M. WHISTLER (1834-1903): BILLINGSGATE
Etching on paper, 6 x 8 7/8 in. (plate, sight); signed and dated 1859 in the plate.
Estimate: \$ 400.00 - \$ 600.00

Lots 211 - 220



Lot #211: JAMES MCNEIL WHISTLER (1834-1903): "ALDERNEY STREET," 1881

Etching and tone on paper, 6 7/8 x 4 3/8 in. (plate), inscribed "Gazette des Beaux-Arts" and "Imp Cadert," with butterfly mark in the impression; framed.

Estimate: \$ 300.00 - \$ 500.00



Lot #212: AFTER JAMES ABBOTT MCNEILL WHISTLER: "ROTHERLITHE"

Etching, 5 3/4 x 8 1/2 in. (plate), signed in the plate and dated 1859 lower right.

Estimate: \$ 5.00 - \$ 10.00



Lot #213: EUROPEAN SCHOOL: STROLLING FIGURES

Pastel on paper, 15 x 9 3/4 in. (sight), dated Jan.10, 1890, signed faintly; framed.

Estimate: \$ 300.00 - \$ 500.00



Lot #214: CONTINENTAL SCHOOL: PASTORAL SCENE WITH SHEPHERD AND DISTANT CASTLE

Sepia wash and pen and ink on paper, 14 1/4 x 19 in., unsigned.

Estimate: \$ 300.00 - \$ 600.00



Lot #215: FLEMISH SCHOOL: COUNTRY LANDSCAPE WITH FIGURES AND DISTANT VILLAGE

Brown pen and ink with watercolor on paper, 7 3/4 x 11 3/4 in. (sheet).

Estimate: \$ 200.00 - \$ 400.00



Lot #216: CONTINENTAL SCHOOL: FOREST VALLEY LANDSCAPE

Pen and ink with wash on paper, 14 1/2 x 19 in. (image), unsigned.

Estimate: \$ 300.00 - \$ 500.00



Lot #217: EUROPEAN SCHOOL: FIGURES IN A LANDSCAPE

Charcoal sketch on paper, 12 1/8 x 8 7/8 in. (sight), unsigned, framed.
Estimate: \$ 400.00 - \$ 600.00



Lot #218: FRANCIS HUY: FIGURE IN MOUNTAIN LANDSCAPE

Watercolor on paper, 2 3/4 x 4 1/4 in. (sight), signed, Chamberlin Gallery exhibition label on verso.
Estimate: \$ 75.00 - \$ 125.00



Lot #219: ATTRIBUTED TO HENRI-CHARLES MANGUIN: LANDSCAPE SKETCH WITH NOTATION

Ink on paper, 4 1/2 x 6 1/2 in. (sight); estate stamp recto.
Estimate: \$ 200.00 - \$ 400.00



Lot #220: FRENCH SCHOOL: PASTORAL LANDSCAPE WITH FARM HOUSE

Pen with watercolor and ink on paper; 6 1/2 x 8 7/8 in. (sheet).
Estimate: \$ 200.00 - \$ 400.00

[Back](#)

[Back to Index](#)

[Next](#)

Lots 221 - 230



Lot #221: AMERICAN SCHOOL: EASTHAMPTON

Watercolor on paper; 10 x 15 in.
Estimate: \$ 500.00 - \$ 700.00



Lot #222: FRENCH SCHOOL: RIVER LANDSCAPE WITH RUINED BRIDGE

Watercolor on paper, 7 1/4 x 10 1/2 in. (sight), signed indistinctly lower right.
Estimate: \$ 200.00 - \$ 300.00



Lot #223: ALFRED GEORGE STEVENS (1817-1875): HORSE-DRAWN CART LEAVING A VILLAGE

Watercolor on paper, 9 1/2 x 13 1/2 in., signed.
Estimate: \$ 250.00 - \$ 500.00



Lot #224: EUROPEAN SCHOOL: CART WITH FIGURES, TOWN IN THE DISTANCE

Watercolor, partial signature, and dated 1838.
Estimate: \$ 200.00 - \$ 400.00



Lot #225: 20TH C. SCHOOL: MAN AND DONKEY

Pen and ink on paper, 10 3/4 x 8 1/2 in. (sight), bearing signature Marc Chagall.
Estimate: \$ 50.00 - \$ 100.00



Lot #226: KARL SCHMIDT (1890-1962): PURPLE MOUNTAIN LANDSCAPE

Watercolor on paper, 4 1/4 x 6 1/2 in. (image), signed.
Estimate: \$ 200.00 - \$ 400.00



Lot #227: FRANCOIS AUGUSTE ORTMANS (1827-1884): CHICKENS IN A YARD
Pencil and watercolor on paper, 10 1/2 x 7 3/8 in. (sight), signed, dated Juin 75; framed.
Estimate: \$ 150.00 - \$ 250.00



Lot #228: FRANZ KOBEL (1749-1822) : LANDSCAPE WITH COWS
Watercolor and pen, 10 1/2 x 12 3/4 in. (sight), signed upper right F. Kobel, 1796.
Estimate: \$ 300.00 - \$ 500.00



Lot #229: FREDERICK E. BODKIN (19TH/20TH C.): PASTORAL LANDSCAPE WITH COWS GRAZING
Watercolor on paper, 14 1/2 x 20 3/4 in., signed and dated lower right.
Estimate: \$ 300.00 - \$ 500.00



Lot #230: FRENCH SCHOOL: "VILLA DE LA CIOTAT-PROJET DE MARCHE COUVERT"
Pen, ink and watercolor, 22 1/2 x 36 1/4 in., stamped "Projet Approuvé."
Estimate: \$ 500.00 - \$ 700.00

Lots 231 - 240



Lot #231: SITE ARCHITECTS: PERPETUAL SAVINGS AND LOAN BANK - SOUTH DAKOTA
Pen and black ink, 18 x 23 1/4 in. (image), signed SITE SSSW - W, titled and dated 1980.
Estimate: \$ 1000.00 - \$ 1500.00



Lot #232: D. H. BURNHAM & CO.: "PROPOSED ADDITION TO THE CITY STATE BANK BUILDING, WELLS AND RANDOLPH STREET, CHICAGO"
Black and red ink drawing on paper, 48 x 36 1/2 in. (image), signed D.H. Burnham and dated 1927.
Estimate: \$ 1200.00 - \$ 1800.00



Lot #233: 20TH C. SCHOOL: "A CANAL THROUGH THE CITY"
Charcoal and pencil on paper, 15 x 12 3/4 in. (image), with artist's monogram and dated '86.
Estimate: \$ 200.00 - \$ 300.00



Lot #234: ENGLISH SCHOOL: D.H. EVANS DEPARTMENT STORE
15 1/2 x 8 in. (sight). Note: Dan Harries Evans was born in South Wales in 1856. He moved to London in 1878 and opened a small shop selling linen drapery and fancy goods. By 1885 he was letting three adjoining properties on Oxford St. In 1882 he moved to 290-294 Oxford and expanded his lines to include groceries, general provisions and glassware. In the years following, he acquired a board of directors and investors so that by 1906 the Evans occupied 290-320 Oxford and proposals were made to revamp the block he now leased. Evans retired in 1915. In 1935 after various mergers and acquisitions the company relocated to an island site, bordered by Oxford, Old Cavendish and Henrietta Streets and Chapel Place. Louis Blanc was hired to design the new building. In 1954 DH Evans Co Ltd became a wholly-owned subsidiary of Harrods Ltd, which was subsequently purchased by House of Fraser. In 1987 D.H. Evans was renamed House of Fraser.
Estimate: \$ 400.00 - \$ 800.00



Lot #235: 20TH C. SCHOOL: INTERIOR OF MODERNIST BANK
Pencil and charcoal on paper, 14 1/2 x 18 1/2 in. (image), signed illegibly and dated '57.
Estimate: \$ 150.00 - \$ 250.00



Lot #236: 20TH C. SCHOOL: "KOWLOON BAY DEPOT"
Watercolor and pencil on paper, 20 x 29 1/2 in. (image), titled, signed Sidney Ferry and dated '78.
Estimate: \$ 300.00 - \$ 500.00



Lot #237: AMERICAN SCHOOL: THE WOOLWORTH BUILDING AT NIGHT

Pencil and charcoal on paper, 32 x 15 in. (image), unsigned, circa 1930.
Estimate: \$ 1000.00 - \$ 1500.00



Lot #238: ENGLISH SCHOOL: ARCHITECTURAL RENDERING

Gouache on paper, 7 3/4 x 13 5/8 in. (sight).
Estimate: \$ 300.00 - \$ 500.00



Lot #239: AMERICAN SCHOOL: A GRANITE FACADE TO A NEWSPAPER OFFICE

Pen, ink, pencil and gray wash on paper, 38 x 25 in., unsigned.
Estimate: \$ 800.00 - \$ 1200.00



Lot #240: EUROPEAN SCHOOL: STUDY FOR AN ESCALATOR

Pencil, chalk and gouache, 12 x 7 3/4 in. (sight).
Estimate: \$ 200.00 - \$ 400.00

[Back](#)

[Back to Index](#)

[Next](#)

Lots 241 - 250



Lot #241: 20TH C. SCHOOL: BUILDING FACADE

Oil on panel en grisailles, 18 5/8 x 12 1/8 in.
Estimate: \$ 300.00 - \$ 500.00



Lot #242: AMERICAN SCHOOL: EARLY RENDERING OF THE WOOLWORTH BUILDING

Black chalk and/or pencil on paper, 32 3/4 x 15 1/8 in. (sight), unsigned.
Estimate: \$ 700.00 - \$ 900.00



Lot #243: 20TH C. SCHOOL: MERCANTILE BUILDING

Charcoal on paper, 18 3/4 x 11 1/2 in. (image), signed T. de Postels lower left. Note: Theodore August de Postels (1873-1960) was a member of the American Institute of Architects from 1926 until his death in 1960. Primarily an architectural draftsman rather than a designer, he authored several books on drafting techniques including "Fundamentals of Perspective" (1949) and "Perspector" (1952).
Estimate: \$ 700.00 - \$ 900.00



Lot #244: AMERICAN SCHOOL: ARCHITECTURAL RENDERING OF CORNER DEPARTMENT STORE

Pencil and charcoal on paper, 21 x 27 in. (image), signed Burnharn & Hammond, Inc.
Estimate: \$ 400.00 - \$ 800.00



Lot #245: 20TH C. SCHOOL: "19 RECTOR STREET"

Watercolor and pencil on paper, 23 1/4 x 17 3/4 in., signed Alexander Zamshnick.
Estimate: \$ 600.00 - \$ 800.00



Lot #246: ENGLISH SCHOOL: DESIGN FOR A REFRESHMENT STAND

Pencil, ink and watercolor on paper, 14 3/4 x 24 5/8 in. (sight), Tannelli Studios, Designer Pierre Blouke Associates.
Estimate: \$ 500.00 - \$ 1000.00



Lot #247: 20TH C. SCHOOL: BANK INTERIOR

Graphite and pencil on paper, 18 1/2 x 25 1/2 in. (image), signed Tom Harvey and dated '65 lower right.
Estimate: \$ 600.00 - \$ 800.00



Lot #248: 20TH C. SCHOOL: "THE CITY OF LONDON IN 1964"

Collaged newspaper and architectural photographs on a hand-colored lithographic print, 15 x 23 in. (image), signed J.A. Anthony.
Estimate: \$ 200.00 - \$ 400.00



Lot #249: 20TH C. BRITISH SCHOOL: OFFICE AND SHOP FACADES

Gouache on paper, 20 5/8 x 26 1/4 in. (sight), signed: Tom Harvey and dated indistinctly.
Estimate: \$ 200.00 - \$ 400.00



Lot #250: BRITISH SCHOOL: TRANMERE BRANCH OF MIDLAND BANK

Watercolor and ink on paper, 12 x 15 3/4 in. (sight), design by A. Neville Hold, FRIBA and drawn by N. Hampson. Note: Tranmere is near Birkenhead, UK.
Estimate: \$ 250.00 - \$ 350.00

[Back](#)

[Back to Index](#)

[Next](#)

Lots 251 - 260



Lot #251: ENGLISH SCHOOL: "D.H. EVANS: THE FIRST SALE AT LONDON'S MOST MODERN SHOP"
Charcoal and colored chalk on paper, 13 1/4 x 10 1/4 in. (image).
Estimate: \$ 200.00 - \$ 300.00



Lot #252: ENGLISH SCHOOL: "D.H. EVANS: LONDON'S MOST MODERN SHOP"
Gouache and mixed media on paper, 12 x 7 1/2 in. (image), unsigned.
Estimate: \$ 200.00 - \$ 400.00



Lot #253: ENGLISH SCHOOL: "WAREHOUSE SHEPHERDESS WALK FOR MESSRS. PILKINGTON BROTHERS, DRAWING NO. 60"
Pen and ink with pencil on paper, 19 x 29 1/2 in. (image), architects noted Sir John Simpson and Maxwell Ayrton and dated 1917.
Estimate: \$ 800.00 - \$ 1200.00



Lot #254: D.H. EVANS & CO. LTD. PROPOSAL
Sepia ink on paper, 8 1/2 x 10 in. (sight).
Estimate: \$ 100.00 - \$ 200.00



Lot #255: 20TH C. SCHOOL: RENDERING OF A MODERNIST BUILDING
Watercolor and pencil on paper, 12 1/2 x 19 1/4 in. (image), signed L.J. Bentley and dated '60.
Estimate: \$ 300.00 - \$ 500.00



Lot #256: ENGLISH SCHOOL: DESIGN FOR A MODERN BRITISH SHOPPING CENTER
Ink and watercolor, 13 x 19 1/2 in. (sight), signed and dated LJ Bentley '60.
Estimate: \$ 300.00 - \$ 500.00



Lot #257: ENGLISH SCHOOL: DESIGN FOR A MODERN BRITISH BUILDING

Ink and watercolor on paper, unsigned.

Estimate: \$ 500.00 - \$ 700.00



Lot #258: ENGLISH SCHOOL: "DESIGN FOR THE BELFREY ROOM"

Watercolor and pencil on paper, 18 1/4 x 29 in. (image), signed and titled upper left, from the design firm Nina Campbell Ltd.

Estimate: \$ 300.00 - \$ 500.00



Lot #259: ENGLISH SCHOOL: INTERIOR STUDY OF A LECTURE HALL

Pencil and watercolor on paper, 17 3/4 x 27 in. (sight), by the firms of Albert W. Moore & Nicolas & Dixon-Spain. Note: J. E. Dixon-Spain and Charles Nicholas designed the New Gallery Cinema in London in 1925. They designed the Aladdin Lamp Factory in Greenford, UK in 1932.

Estimate: \$ 400.00 - \$ 800.00



Lot #260: ENGLISH SCHOOL: STUDY OF A YELLOW BRICK BUILDING

Watercolor with pencil and ink, 20 1/4 x 19 5/8 in., signed E.J. Thring, lower right.

Estimate: \$ 300.00 - \$ 500.00



Lot #260A: ENGLISH SCHOOL: BUILDING DESIGN

Watercolor on paper, 25 1/2 x 25 1/4 in. (sight), designed by Chaikiu & Nesher and drawn by W. Warman.

Estimate: \$ 200.00 - \$ 400.00

Lots 261 - 270



Lot #261: ENGLISH SCHOOL: PERSPECTIVE OF AN ENGLISH SHOPPING CENTER
Pen, pencil and watercolor on paper, 12 3/4 x 23 3/4 in. (sight), signed L.J. Bentley and dated 50.
Estimate: \$ 400.00 - \$ 800.00



Lot #261A: ENGLISH SCHOOL: ARCHITECTURAL RENDERING
Watercolor on paper, 13 5/8 x 21 1/4 in (sight), signed and dated: LJ Bentley 61.
Estimate: \$ 300.00 - \$ 500.00



Lot #262: ENGLISH SCHOOL: STORE FACADES
Pencil and watercolor, 11 x 15 3/4 in. (sight), illegibly signed and dated '60.
Estimate: \$ 400.00 - \$ 600.00



Lot #263: FRENCH SCHOOL: "CASINO CHARBONNIERES"
Watercolor and pencil on paper, 13 x 21 1/2 in. (image), signed, titled, dated 1927, and dedicated lower right, from the Lyon architectural firm Trevoux.
Estimate: \$ 400.00 - \$ 800.00



Lot #264: FRENCH SCHOOL: STORE FACADE
For Lecompte watch and jewelry shop, mixed media on paper; 7 7/8 x 15 1/8 in. (sight).
Estimate: \$ 400.00 - \$ 800.00



Lot #265: FRENCH SCHOOL: S. VILTARD AUX PRODUITS DE LA MER
Gouache on paper, 22 x 27 in. (sight).
Estimate: \$ 400.00 - \$ 600.00



Lot #266: 20TH C. SCHOOL: ART MODERNE ENTRY
Watercolor with pen and ink on paper, 18 1/2 x 15 1/2 in., unsigned.
Estimate: \$ 300.00 - \$ 500.00



Lot #267: FRENCH SCHOOL: "UN MARCHÉ COUVERT" (STREET VIEW)

Ink and watercolor on paper, 27 x 39 in. (sight).
Estimate: \$ 700.00 - \$ 900.00



Lot #268: 20TH C. SCHOOL: "DIRECTORS R. VT. INTERIOR DESIGN"

Watercolor and pencil on paper, 8 1/2 x 8 in. (image), signed in pencil Niedcren Walbridge Co.
Estimate: \$ 200.00 - \$ 400.00



Lot #269: FRENCH SCHOOL: " A LA MARQUIS DE SEVIGNE"

Mixed media on paper, 16 1/4 x 24 in. (image), signed F. Ethy, The Artis Group exhibition label on verso.
Estimate: \$ 700.00 - \$ 900.00



Lot #269A: 20TH C. SCHOOL: ARCHITECTURAL RENDERING OF A DEPARTMENT STORE

Mixed media on paper, 15 1/2 x 29 in., unsigned.
Estimate: \$ 800.00 - \$ 1200.00



Lot #270: FRENCH SCHOOL: BOULANGERIE

Gouache on paper, 21 x 29 1/2 in. (sight), proposed design by Taillard.
Estimate: \$ 300.00 - \$ 500.00

Lots 271 - 280



Lot #271: FRENCH SCHOOL: "BIJOUTERIE"

Gouache on paper, 21 x 26 in. (sight).
Estimate: \$ 400.00 - \$ 600.00



Lot #272: 20TH C. SCHOOL: "TRIPERIE, BOUCHERIE, VOLAILLES"

Watercolor and pencil on paper, 21 1/4 x 30 in. (image), unsigned, circa 1930.
Estimate: \$ 1000.00 - \$ 1500.00



Lot #273: FRENCH SCHOOL: STUDY FOR A SMALL COTTAGE

Ink and watercolor, 16 1/2 x 15 3/4 in., with faded architects stamp.
Estimate: \$ 400.00 - \$ 800.00



Lot #274: FRENCH SCHOOL: "FAYARD"

Watercolor on paper, 25 1/2 x 36 1/2 in. (sight), initialed and dated '29.
Estimate: \$ 500.00 - \$ 700.00



Lot #275: FRENCH SCHOOL: PROPOSAL FOR A CINEMA IN CANNES

Gouache on paper, 14 1/4 x 34 1/2 in. (sight), E. Bruyneel, architect.
Estimate: \$ 400.00 - \$ 600.00



Lot #276: FRENCH SCHOOL: "BOULANGERIE, GLAZES, PÂTISSERIE"

Gouache and mixed media on paper, 21 1/2 x 29 1/4 in. (image), stamped R. Taillard Installateur.
Estimate: \$ 1000.00 - \$ 1500.00



Lot #277: FRENCH SCHOOL: "DERAMAIX"

Watercolor and pencil on paper, 11 x 19 in. (image), signed Robert Baratte and dated 1955 in pencil.
Estimate: \$ 550.00 - \$ 750.00



Lot #278: FRENCH SCHOOL: RESTAURANT INTERIOR
Perspective drawing; pencil and watercolor, 8 1/4 x 12 1/2 (sight).
Estimate: \$ 300.00 - \$ 500.00



Lot #279: FRENCH SCHOOL: ARCHITECTURAL RENDERING OF STOREFRONTS AND STREET VIEW
Pen and ink with watercolor, 21 1/2 x 14 in. (image), unsigned.
Estimate: \$ 200.00 - \$ 400.00



Lot #280: 20TH C. SCHOOL: "BON MARCHE"
Pencil with pen and ink and gray wash, 15 x 22 in. (image), signed illegibly and dated '78.
Estimate: \$ 700.00 - \$ 900.00

[Back](#)

[Back to Index](#)

[Next](#)

Lots 281 - 290



Lot #281: FRENCH SCHOOL: DESIGN FOR A PARFUMERIE

Ink and watercolor on paper, 31 1/4 x 13 7/8 in. (sight), illegibly signed and dated 1908.
Estimate: \$ 500.00 - \$ 700.00



Lot #282: FRENCH SCHOOL: "UN MARCHÉ COUVERT" (CROSS SECTION)

Ink and watercolor on paper, 20 x 32 in. (sight).
Estimate: \$ 500.00 - \$ 700.00



Lot #283: EUROPEAN SCHOOL: MODERNIST BUILDING WITH FIGURES

Watercolor and mixed media on paper, 11 1/2 x 11 3/4 in. (image), signed illegibly and dated 1929.
Estimate: \$ 200.00 - \$ 400.00



Lot #284: FRENCH SCHOOL: BUTCHER'S STOREFRONT

Gouache on paper, 11 1/8 x 13 1/4 in. (sight); stamped by the designer.
Estimate: \$ 600.00 - \$ 800.00



Lot #285: FRENCH SCHOOL: "BOULANGERIE"

Gouache on paper, 20 3/4 x 26 1/4 in. (sight).
Estimate: \$ 400.00 - \$ 600.00



Lot #286: FRENCH SCHOOL: "UN MARCHÉ COUVERT, FACADE"

Pen and ink with watercolor on paper, 27 1/2 x 36 1/2 in. (image), unsigned.
Estimate: \$ 800.00 - \$ 1200.00



Lot #287: FRENCH SCHOOL: DESIGN FOR A DOORWAY AND A WINDOW GATE

Pencil and watercolor on paper; 37 1/2 x 15 3/4 in.

Estimate: \$ 400.00 - \$ 800.00



Lot #288: FRENCH SCHOOL: "PROJET POUR MONSIEUR LENFANT"

Perspective drawing; mixed media on paper, 11 1/2 x 18 1/2 in. (sight).

Estimate: \$ 300.00 - \$ 500.00



Lot #289: 20TH C. SCHOOL: A RUN ON THE BANK

Watercolor and pencil on paper, 17 1/2 x 23 1/2 in. (image), signed Astine and dated 1939 in pencil.

Estimate: \$ 600.00 - \$ 800.00



Lot #290: FRENCH SCHOOL: DESIGN FOR "LA CUISINE DE CHEZ SOI"

Gouache on paper, 14 3/4 x 20 1/4 in. (sight).

Estimate: \$ 500.00 - \$ 700.00

[Back](#)

[Back to Index](#)

[Next](#)

Lots 291 - 300



Lot #291: FRENCH SCHOOL: "COIFFEUR"

Perspective drawing for a hair salon; watercolor on paper, 11 x 9 in. (sight).
Estimate: \$ 300.00 - \$ 500.00



Lot #292: FRENCH SCHOOL: RESTAURANT INTERIOR

Oil on paper, 10 1/4 x 10 1/4 in. (sight).
Estimate: \$ 300.00 - \$ 500.00



Lot #293: FRENCH SCHOOL: CORNER "PATISSERIE"

Gouache on paper, 27 x 21 1/2 in. (sight).
Estimate: \$ 500.00 - \$ 700.00



Lot #294: FRENCH SCHOOL: "SCOLER CLÔTURES"

Perspective drawing for a Fence Co.; watercolor on paper, 7 7/8 x 11 1/2 in. (sight).
Estimate: \$ 300.00 - \$ 500.00



Lot #295: ITALIAN SCHOOL: "BANCA MUTUA POPOLA: VEDUTA PROSPECTICA"

Pen and brown and black ink, 15 x 17 1/2 in. (sight), illegibly signed, titled and dated 1912.
Estimate: \$ 600.00 - \$ 800.00



Lot #296: J.D. HARVEY (20TH C.): DESIGN FOR GODFREY PHILLIPS PTY, LTD. (AUSTRALIA)

Pen, ink, charcoal and watercolor on paper, signed and dated '53.
Estimate: \$ 600.00 - \$ 800.00



Lot #297: EUROPEAN SCHOOL: BUILDING ELEVATION

Ink, pencil and wash on paper, 21 x 30 in. (sight).
Estimate: \$ 800.00 - \$ 1200.00



Lot #298: FRENCH SCHOOL: "PROPRIETE DE MON. COLLIGNON"

Pen and ink with watercolor on paper, 20 x 24 in. (image), titled with architect noted M. Merle.
Estimate: \$ 300.00 - \$ 500.00



Lot #299: EUROPEAN SCHOOL: FRIEZE DESIGN

Watercolor on paper, 4 5/8 x 8 3/4 in. (sight).
Estimate: \$ 150.00 - \$ 250.00



Lot #300: CHARLES GANES LANDER: VIEW OF THE ROYAL EXCHANGE AND BANK OF SCOTLAND

Watercolor and pencil on paper, 16 x 24 in. (image), signed lower left.
Estimate: \$ 700.00 - \$ 900.00

[Back](#)

[Back to Index](#)

[Next](#)