

## Lots 501 - 510



**Lot #501: EUROPEAN SCHOOL: LANDSCAPE WITH ROOFTOPS**

Oil on panel, 20 1/4 x 29 in., bearing signature Egon Schiele and dated 1917 lower right.  
Estimate: \$ 700.00 - \$ 900.00



**Lot #502: EUROPEAN SCHOOL: URBAN SCENE WITH ROOFTOPS**

Oil on panel, 16 x 18 in., bearing signature Egon Schiele and dated 1918 lower right.  
Estimate: \$ 250.00 - \$ 450.00



**Lot #503: EUROPEAN SCHOOL: SAILBOAT ON RIVER**

Oil on canvas, 15 1/2 x 17 1/2 in., bearing signature P. Signac lower left.  
Estimate: \$ 50.00 - \$ 100.00



**Lot #504: EUROPEAN SCHOOL : LANDSCAPE WITH CHURCH**

Oil on panel, 8 1/2 x 10 1/2 in., bearing signature P. Signac lower left, Galerie Kleinmann & Co. label on verso.  
Estimate: \$ 300.00 - \$ 500.00



**Lot #505: EUROPEAN SCHOOL: RIVER SCENE WITH FIGURE IN BOAT**

Oil on canvas, 32 x 40 in., bearing signature Sisley lower right.  
Estimate: \$ 800.00 - \$ 1000.00



**Lot #506: EUROPEAN SCHOOL: STREET SCENE**

Oil on canvas, 19 1/4 x 28 1/4 in., bearing signature Sisley lower right.  
Estimate: \$ 500.00 - \$ 700.00



**Lot #507: EUROPEAN SCHOOL: LANDSCAPE WITH BOATS**

Watercolor on paper, 9 1/2 x 13 1/2 in. (image), bearing signature Sisley lower left and dated '73.  
Estimate: \$ 300.00 - \$ 500.00



**Lot #508: EUROPEAN SCHOOL: LANDSCAPE WITH RIVER**

Oil on panel, 12 3/4 x 17 3/4 in., bearing Sisley signature lower left.  
Estimate: \$ 300.00 - \$ 500.00



**Lot #509: EUROPEAN SCHOOL: MOORED RIVER BOATS**

Oil on canvas, 12 x 21 3/4 in., bearing signature Sisley and dated '79 lower right.  
Estimate: \$ 200.00 - \$ 400.00



**Lot #510: EUROPEAN SCHOOL: STUDIES OF HEADS, TIGER AND BOTTLE**

Oil on board, 5 1/4 x 6 1/2 in., bearing signature J. Sorolla.  
Estimate: \$ 100.00 - \$ 150.00

[Back](#)

[Back to Index](#)

[Next](#)

## Lots 511 - 520



**Lot #511: SPANISH SCHOOL: PORTRAIT OF A YOUNG GIRL WITH HOOP**  
Oil on cradled panel, 16 x 10 in., bearing inscription and signature Aurarita Bastida/J. Sorillo.  
Estimate: \$ 400.00 - \$ 600.00



**Lot #512: EUROPEAN SCHOOL: URBAN SCENE**  
Oil on canvas, 9 1/2 x 17 3/4 in., bearing signature J. Sorolla lower left  
Estimate: \$ 600.00 - \$ 800.00



**Lot #513: EUROPEAN SCHOOL: MOUNTAIN SCENE**  
Oil on canvas, 25 3/4 x 20 in., bearing signature Soutine lower right.  
Estimate: \$ 200.00 - \$ 300.00



**Lot #514: SCHOOL OF PARIS: "PAYSAGE"**  
Oil on canvas, 29 x 36 1/4 in., bearing signature Soutine lower left.  
Estimate: \$ 300.00 - \$ 500.00



**Lot #515: 20TH C. SCHOOL: "L'EXPOSITION DE PEINTURE"**  
Oil on masonite, 30 c 39 1/2 in., signed Albert Tarika lower left, Roosevelt Field Art Center Inc exhibition label on verso.  
Estimate: \$ 150.00 - \$ 250.00



**Lot #516: EUROPEAN SCHOOL: SACRÉ COEUR**  
Oil on canvas, 21 1/2 x 28 in., bearing signature Maurice Utrillo.  
Estimate: \$ 150.00 - \$ 250.00



**Lot #517: EUROPEAN SCHOOL: THE GENDARMERIE**

Oil on canvas, 31 1/4 x 41 in., bearing signature Maurice Utrillo lower left.  
Estimate: \$ 700.00 - \$ 900.00



**Lot #518: EUROPEAN SCHOOL: VILLAGE STREET SCENE**

Oil on canvas, 42 x 27 1/4 in., bearing signature Maurice Utrillo lower right.  
Estimate: \$ 800.00 - \$ 1000.00



**Lot #519: EUROPEAN SCHOOL: SACRÉ COEUR**

Oil on canvas, 21 3/4 x 13 in., bearing signature Maurice Utrillo lower right.  
Estimate: \$ 400.00 - \$ 600.00



**Lot #520: EUROPEAN SCHOOL: VILLAGE SCENE WITH WINDMILL**

Oil on canvas, 19 1/2 x 23 1/2 in., bearing signature Maurice Utrillo lower right.  
Estimate: \$ 300.00 - \$ 500.00

[Back](#)

[Back to Index](#)

[Next](#)

## Lots 521 - 530



**Lot #521: FRENCH SCHOOL: CITYSCAPE**

Oil on canvas, 13 x 16 1/4 in., bearing signature Maurice Utrillo lower right.  
Estimate: \$ 300.00 - \$ 500.00



**Lot #522: EUROPEAN SCHOOL: LANDSCAPE WITH WINDMILL**

Oil on canvas, 8 3/4 x 10 1/2 in., bearing signature Maurice Utrillo lower right.  
Estimate: \$ 200.00 - \$ 300.00



**Lot #523: EUROPEAN SCHOOL: STREET SCENE IN WINTER**

Oil on canvas, 21 3/4 x 28 1/4 in., bearing signature Maurice Utrillo lower right.  
Estimate: \$ 700.00 - \$ 900.00



**Lot #524: EUROPEAN SCHOOL: TWO SEATED WOMAN**

Oil on canvas, 24 x 18 1/8 in., bearing signature Van Dongen lower right and dated '77, the Godfrey Phillips Galleries label on verso.  
Estimate: \$ 700.00 - \$ 900.00



**Lot #525: EUROPEAN SCHOOL: STANDING FEMALE NUDE WEARING RED SHOES**

Oil on canvas, 20 x 9 in., bearing signature V. Dongen lower right.  
Estimate: \$ 300.00 - \$ 500.00



**Lot #526: FRENCH SCHOOL: ROAD AND HOUSES IN THE SNOW**

Oil on canvas, 18 x 21 3/4 in., bearing signature Vlaminck.  
Estimate: \$ 300.00 - \$ 500.00



**Lot #527: EUROPEAN SCHOOL: WINTER STREET SCENE**

Oil on canvas, relined, 17 x 20 in., bearing Vlaminck signature lower left.  
Estimate: \$ 300.00 - \$ 500.00



**Lot #528: EUROPEAN SCHOOL: CITYSCAPE**

Oil on canvas, 14 3/4 x 21 in., bearing signature Vlaminck lower left.  
Estimate: \$ 400.00 - \$ 600.00



**Lot #529: EUROPEAN SCHOOL: URBAN SCENE WITH ROADWAY**

Oil on canvas, 21 1/2 x 17 in, bearing signature Vlaminck lower right.  
Estimate: \$ 400.00 - \$ 600.00



**Lot #530: EUROPEAN SCHOOL: RIVER SCENE WITH BRIDGE**

Oil on canvas, 22 x 25 3/4 in., bearing signature Vlaminck lower right.  
Estimate: \$ 300.00 - \$ 500.00

[Back](#)

[Back to Index](#)

[Next](#)

## Lots 531 - 540



**Lot #531: EUROPEAN SCHOOL: "AZURE"**  
Oil on canvas, 18 x 21 3/4 in., bearing signature Vlamincq.  
Estimate: \$ 250.00 - \$ 450.00



**Lot #532: EUROPEAN SCHOOL: "LE SALON DE MADAME CAILLEBOTTE"**  
Oil on canvas, 17 1/2 x 24 in., bearing signature Vuillard lower left, old label on verso.  
Estimate: \$ 500.00 - \$ 700.00



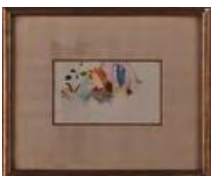
**Lot #533: EUROPEAN SCHOOL: PORTRAIT OF BEARDED MAN IN RED SHIRT**  
Oil on board, 21 1/4 x 18 in., bearing signature E. Vuillard lower left.  
Estimate: \$ 200.00 - \$ 400.00



**Lot #534: EUROPEAN SCHOOL: PAIR OF FLORAL STILL LIFES**  
Each watercolor and pencil on board, both signed John Wenger and dated 1938 or '37, together with a watercolor, signed Alan and dated '70; 22 x 30 in.  
Estimate: \$ 300.00 - \$ 500.00



**Lot #535: FRENCH SCHOOL: KNEELING WOMAN**  
Sculpture, 20 in.  
Estimate: \$ 250.00 - \$ 450.00



**Lot #536: EUROPEAN SCHOOL: THREE WOMAN IN PROFILE**  
Watercolor on paper, 6 x 10 in. (image), initialed lower right.  
Estimate: \$ 150.00 - \$ 250.00



**Lot #537: EUROPEAN SCHOOL: STREET SCENE WITH FIGURES**

Oil on canvas, 30 1/4 x 38 1/2 in., initialed R lower right.

Estimate: \$ 800.00 - \$ 1000.00



**Lot #538: EUROPEAN SCHOOL: STREET SCENE WITH FIGURES**

Oil on canvas, 18 1/4 x 15 in., initialed B lower left.

Estimate: \$ 500.00 - \$ 700.00



**Lot #539: EUROPEAN SCHOOL: YOUNG GIRL IN GREEN CHAIR**

Oil on panel, 5 3/4 x 4 1/2 in., initialed and dated '73.

Estimate: \$ 150.00 - \$ 250.00



**Lot #540: EUROPEAN SCHOOL: PORTRAIT OF FATHER AND SON**

Charcoal on paper, 15 x 9 1/2 in. (image), signed and dated '60.

Estimate: \$ 150.00 - \$ 250.00

[Back](#)

[Back to Index](#)

[Next](#)



## Lots 541 - 550



**Lot #541: EUROPEAN SCHOOL: PORTRAIT OF A WOMAN WITH FLOWER**  
Pastel and charcoal on paper, 20 1/2 x 15 in. (image), indistinctly signed lower left.  
Estimate: \$ 200.00 - \$ 300.00



**Lot #542: EUROPEAN SCHOOL: PORTRAIT OF A YOUNG WOMAN**  
Oil on canvas, 13 3/4 x 10 3/4 in., signed illegibly lower right.  
Estimate: \$ 200.00 - \$ 400.00



**Lot #543: EUROPEAN SCHOOL: SEATED FEMALE NUDE**  
Oil on canvas, 23 3/4 x 17 3/4 in., signed illegibly.  
Estimate: \$ 200.00 - \$ 400.00



**Lot #544: EUROPEAN SCHOOL: PASTORAL SCENE WITH GRAZING COWS**  
Oil on panel, 14 3/4 x 21 1/2 in., signed and dated '55 lower right.  
Estimate: \$ 300.00 - \$ 500.00



**Lot #545: EUROPEAN SCHOOL: PARK SCENE**  
Oil on canvas, 15 x 27 1/2 in., indistinctly signed lower right.  
Estimate: \$ 300.00 - \$ 500.00



**Lot #546: EUROPEAN SCHOOL: LANDSCAPE WITH FIGURES**  
Oil on canvas, 9 1/2 x 13 in., illegibly signed lower left.  
Estimate: \$ 300.00 - \$ 500.00



**Lot #547: EUROPEAN SCHOOL: ABSTRACT FOREST SCENE**

Watercolor on paper, 19 3/4 x 28 in. (image), signed in pencil illegibly and dated '71.  
Estimate: \$ 200.00 - \$ 300.00



**Lot #548: EUROPEAN SCHOOL: PORTRAIT OF A GENTLEMAN**

Oil on canvas, relined, 18 x 15 in.  
Estimate: \$ 200.00 - \$ 400.00



**Lot #549: EUROPEAN SCHOOL: STREET SCENE WITH HORSE AND FLOWER CART**

Oil on artistboard, 11 1/2 x 15 1/2 in., unsigned.  
Estimate: \$ 100.00 - \$ 150.00



**Lot #550: EUROPEAN SCHOOL: FIGURE IN PRISMATIC LANDSCAPE**

Oil on canvas, 16 1/2 x 25 1/2 in., unsigned.  
Estimate: \$ 200.00 - \$ 400.00

[Back](#)

[Back to Index](#)

[Next](#)

## Lots 551 - 560



**Lot #551: EUROPEAN SCHOOL: WINTERSCAPE**

Oil on canvas, 24 x 32 in.  
Estimate: \$ 300.00 - \$ 400.00



**Lot #552: EUROPEAN SCHOOL: THE RECITAL**

Oil on canvas, 23 1/2 x 29 in., unsigned.  
Estimate: \$ 500.00 - \$ 700.00



**Lot #553: EUROPEAN SCHOOL: AUTUMN RIVER SCENE**

Oil on canvas, 21 x 27 1/2 in., unsigned.  
Estimate: \$ 300.00 - \$ 400.00



**Lot #554: EUROPEAN SCHOOL: ABSTRACT FEMALE CARYATID**

Oil on canvas, 36 1/2 x 21 in., unsigned.  
Estimate: \$ 400.00 - \$ 600.00



**Lot #555: EUROPEAN SCHOOL: STUDY OF WOMAN'S HEAD AND FIGURE OF MAN**

Oil on wood panel, 5 1/2 x 9 1/4 in., unsigned.  
Estimate: \$ 100.00 - \$ 150.00



**Lot #556: 20TH C. SCHOOL: LANDSCAPE WITH BATHERS IN FOREST**

Oil on canvas, 22 x 26 1/4 in., unsigned.  
Estimate: \$ 500.00 - \$ 700.00



**Lot #557: EUROPEAN SCHOOL: ORIENTAL MAN RECLINING AND SMOKING**

Oil on canvas, 14 1/2 x 20 1/2 in., unsigned.  
Estimate: \$ 300.00 - \$ 500.00



**Lot #558: EUROPEAN SCHOOL: THE CONVERSATION**

Oil on panel, 10 3/4 x 7 1/4 in., unsigned.  
Estimate: \$ 200.00 - \$ 300.00



**Lot #559: EUROPEAN SCHOOL: HORSE AND JOCKEY**

Oil on panel, 10 1/4 x 12 1/2 in., unsigned.  
Estimate: \$ 100.00 - \$ 200.00



**Lot #560: EUROPEAN SCHOOL: LANDSCAPE WITH OLIVE TREES**

Oil on canvas, 9 1/2 x 13 in.  
Estimate: \$ 300.00 - \$ 500.00

[Back](#)

[Back to Index](#)

[Next](#)

## Lots 561 - 570



**Lot #561: EUROPEAN SCHOOL: THE CHASE**

Oil on canvas, 27 1/2 x 55 in., unsigned.

Estimate: \$ 400.00 - \$ 600.00



**Lot #562: EUROPEAN SCHOOL: LANDSCAPE WITH FIGURES IN THE WOODS**

Oil on canvas, 27 1/2 x 55 in., unsigned.

Estimate: \$ 500.00 - \$ 700.00



**Lot #563: EUROPEAN SCHOOL: INTERIOR TAVERN SCENE**

Oil on panel, 9 3/4 x 12 1/2 in., unsigned.

Estimate: \$ 250.00 - \$ 450.00



**Lot #564: EUROPEAN SCHOOL: SKETCHING IN THE DUNES**

Oil on canvas, 9 3/4 x 20 1/4 in., unsigned.

Estimate: \$ 250.00 - \$ 450.00



**Lot #565: EUROPEAN SCHOOL: VENETIAN SCENE**

Oil on canvas, 18 x 22 in., unsigned.

Estimate: \$ 400.00 - \$ 800.00



**Lot #566: EMPIRE-STYLE GILT FRAME**

26 1/2 x 22 in. (interior).

Estimate: \$ 100.00 - \$ 200.00

**END OF SATURDAY SESSION**



**Lot #567: FLEMISH BAROQUE EBONIZED AND PAINT DECORATED OCTAGONAL MIRROR**

With central octagonal plate surrounded by eight shaped mirror plates, contained in a molded frame; 32 1/2 x 31 1/2 in.  
Estimate: \$ 2000.00 - \$ 4000.00



**Lot #568: PAIR OF SMALL ITALIAN ROCOCO CARVED WALNUT MIRRORS**

Each plate within vine-entwined border with shellwork, c-scroll, flower and leaf crest; 28 3/4 x 14 1/2 in. Provenance:  
Estate of Louis S. Auchincloss  
Estimate: \$ 700.00 - \$ 900.00



**Lot #569: ITALIAN BAROQUE-STYLE CARVED GILTWOOD OVERMANTLE MIRROR**

The four-part plate within leaf-entwined frame with flowerheads, surmounted by a cherub head beneath swan's neck crest;  
4 ft. 8 in. x 5 ft. 3 in.  
Estimate: \$ 1500.00 - \$ 3000.00



**Lot #570: FLEMISH BAROQUE-STYLE REPOUSSÉ BRASS AND BLACK STAINED WOOD MIRROR**

The beveled main plate within canted lateral plates spaced by flowerhead and branch bands and fruit corners; 32 1/2 x 28 in.  
Estimate: \$ 1000.00 - \$ 1500.00

[Back](#)

[Back to Index](#)

[Next](#)

## Lots 571 - 580



**Lot #571: VENETIAN ROCOCO-STYLE ETCHED GLASS MIRROR**

The oblong octagonal beveled plate within subsidiary plates etched with scrolls and spaced by spiral twist rods and joined by flowers, the shaped crest with flower-filled basket, shaped base; 52 x 33 1/2 in.  
Estimate: \$ 800.00 - \$ 1200.00



**Lot #572: REGENCE-STYLE CARVED GILTWOOD SMALL MIRROR**

The slightly arched plate within a frame carved with beading and scrolling foliage on cross-hatched ground; 28 x 24 1/2 in.  
Estimate: \$ 300.00 - \$ 600.00



**Lot #573: PAIR OF SWEDISH NEOCLASSICAL-STYLE CARVED, PAINTED AND PARCEL-GILT WALL MIRRORS**

Each frame with Corinthian pilasters with ball finials and a shaped foliate-carved crest, the base with tiered bellflower tablet and foliate banding; 37 1/2 x 24 1/2 in.  
Estimate: \$ 1000.00 - \$ 2000.00



**Lot #574: SWEDISH NEOCLASSICAL CARVED, PAINTED AND PARCEL-GILT WALL MIRROR**

The rectangular mirror plate within petal-tip surround and an arched frame with lyre crest, engaged columns and grapevine entwined base panel; 41 x 22 3/4 in.  
Estimate: \$ 800.00 - \$ 1200.00



**Lot #575: ITALIAN ROCOCO WALNUT MINIATURE BUREAU BOOKCASE**

The breackarch cornice above a mirrored door opening to pigeonholes, the slant flap enclosing fitted interior, above three-drawer serpentine-fronted case; 29 x 19 x 18 3/8 in.  
Estimate: \$ 1000.00 - \$ 2000.00



**Lot #576: ITALIAN BAROQUE-STYLE PAINTED AND PARCEL-GILT WALL BRACKET**

8 1/2 x 9 1/2 x 8 in.  
Estimate: \$ 800.00 - \$ 1200.00



**Lot #577: ITALIAN ROCOCO-STYLE CARVED AND PAINTED CANAPÉ**

The arched and shell-carved crest rail above padded back and seat, raised on cabriole legs ending in scroll feet; 37 1/2 x 6 ft 7 in. x 28 in.

Estimate: \$ 1500.00 - \$ 2000.00



**Lot #578: PAIR OF LOUIS XV-STYLE CARVED AND PAINTED BERGÈRES D'ENFANT**

Each caned backrest with flower and foliate rails continuing to padded serpentine seat and cabriole legs; 29 x 20 1/4 in.

Estimate: \$ 400.00 - \$ 600.00



**Lot #579: PAIR OF LOUIS XV-STYLE CARVED BEECHWOOD BERGÈRES**

Each with balloon-shaped padded back and arms, the serpentine-fronted seat on cabriole legs carved at the knees with flower stems; 34 x 28 1/2 in.

Estimate: \$ 800.00 - \$ 1200.00



**Lot #580: LOUIS XV-STYLE CARVED AND PAINTED BERGÈRE EN CABRIOLET**

The serpentine top rail above cane back and the padded arms also with cane panels, the serpentine-fronted seat on cabriole legs; 37 1/2 x 29 1/2 in. Provenance: Estate of Louis S. Auchincloss

Estimate: \$ 1000.00 - \$ 2000.00

[Back](#)

[Back to Index](#)

[Next](#)



## Lots 581 - 590



**Lot #581: LOUIS XV-STYLE GILT-METAL MOUNTED TULIPWOOD AND KINGWOOD MARQUETRY PEDESTAL**

The veined gray marble top above a bombé case with foliate-inlaid vinework quarter-veneered front panel and foliate mounts and sabots; 4 ft. 6 in. x 15 x 15 in.

Estimate: \$ 1000.00 - \$ 1500.00



**Lot #582: LOUIS XV-STYLE GILT-METAL MOUNTED TULIPWOOD AND KINGWOOD MARQUETRY SECRETAIRE À ABATTANT**

The serpentine-fronted fleur de peche marble top above a shaped frieze and a fall front with spray of flowers, opening to two drawers and open recess, above three drawers, the legs ending in foliate and paw sabots; 4 ft. 1 1/4 in. x 27 1/4 x 13 in.

Estimate: \$ 1200.00 - \$ 1800.00



**Lot #583: LOUIS XV-STYLE GILT-METAL MOUNTED BURR WALNUT PETIT BUREAU PLAT**

The top with tooled leather panel and leaf-cast edge, above two frieze drawers and raised on cabriole legs with spines continuing into scroll sabots; 28 x 36 x 20 1/4 in.

Estimate: \$ 800.00 - \$ 1200.00



**Lot #584: LOUIS XV-STYLE GILT-METAL MOUNTED KINGWOOD AND TULIPWOOD CHIFFONIER**

The serpentine-fronted marble top above a pair of quarter-veneered doors and five drawers with foliate cast keyhole escutcheons, the corners with spine mounts continuing into the scrolling sabots; 4 ft. 7 in. x 25 x 15 1/2 in.

Estimate: \$ 1200.00 - \$ 1800.00



**Lot #585: LOUIS XV FRUITWOOD RAFRAICHISOIR**

The top inset with marble and two zinc tins, the frieze fitted with drawer; 28 x 23 x 16 in.

Estimate: \$ 1000.00 - \$ 1500.00



**Lot #586: LOUIS XV PROVINCIAL GILT-METAL MOUNTED WALNUT COMMODE**

The case of serpentine outline and bombé contour, containing three drawers sans traverse with foliate-cast handles, raised on spayed legs ending in cabochon and foliate sabots, mounts of later date; 33 x 4 ft. 7 1/2 in. x 24 in.

Estimate: \$ 3000.00 - \$ 5000.00



**Lot #587: PAIR OF TRANSITIONAL LOUIS XV/XVI KINGWOOD AND TULIPWOOD PARQUETRY MARBLE-TOP ENCOIGNURES**

Each case with kingwood veneered single door; 35 3/4 x 25 1/4 x 13 in.  
Estimate: \$ 3000.00 - \$ 5000.00



**Lot #588: TRANSITIONAL LOUIS XV/XVI GILT-BRONZE AND PORCELAIN-MOUNTED MAHOGANY TABLE EN CHIFFONIER**

The galleried top fitted with "Sevres" style porcelain tray with floral oval on sky blue ground, above a shallow drawer with entwined branch mount, the legs joined by a galleried burrwood shelf; 28 1/2 x 14 x 11 3/4 in.  
Estimate: \$ 1500.00 - \$ 3000.00



**Lot #589: LOUIS XVI-STYLE GILT BRONZE-MOUNTED EBONIZED AND LACQUER MARBLE-TOP SIDE CABINET**

Case fitted with single door; 34 x 25 x 7 in.  
Estimate: \$ 2000.00 - \$ 3000.00



**Lot #590: LOUIS XVI-STYLE MAHOGANY AND ORMOLU-MOUNTED D-SHAPE CABINET WITH MARBLE TOP**

The bowfront cabinet with shaped marble, below three center drawers flanked by cupboards; 35 3/4 x 7 ft. 4 in. x 27 in.  
Estimate: \$ 5000.00 - \$ 10,000.00

[Back](#)

[Back to Index](#)

[Next](#)

## Lots 591 - 600



**Lot #591: LOUIS XVI BRASS-MOUNTED MAHOGANY MARBLE-TOP CONSOLE DESSERTTE**

The pierced three-quarter galleried top above a frieze drawer with ring-drop handle, on fluted legs joined by a shelf and ending in thimble sabots; 35 x 38 x 17 3/3 in. Provenance: Estate of Louis S. Auchincloss

Estimate: \$ 1500.00 - \$ 2000.00



**Lot #592: TWO SIMILAR LOUIS XVI-STYLE KINGWOOD AND TULIPWOOD PARQUETRY TABLES À ÉCRIRE**

Each hinged top with diamond lattice panel and rising on ratchet support, above a slide and a drawer and raised on square, tapered legs ending in box sabots; 29 7/8 x 16 1/4 x 11 in. Provenance: Estate of Louis S. Auchincloss

Estimate: \$ 800.00 - \$ 1200.00



**Lot #593: LOUIS XVI-STYLE GILT-METAL MOUNTED OVAL GUÉRIDON**

The veined pink marble top above frieze with applied band and foliate mounts, raised on reeded legs joined by interlaced stretchers and ending in leaf-banded feet; 29 x 22 x 17 in.

Estimate: \$ 500.00 - \$ 1000.00



**Lot #594: LOUIS XVI GILT-BRONZE MOUNTED TULIPWOOD AND FRUITWOOD MARQUETRY MARBLE-TOP COMMODE**

The rectangular top above three drawers sans traverse with ribbon-twist border on green-stained ground, shaped apron, raised on square tapered legs, the mounts of later date; 33 x 37 1/2 x 19 1/4 in.

Estimate: \$ 2000.00 - \$ 3000.00



**Lot #595: TRANSITIONAL LOUIS XV/XVI-STYLE GILT-BRONZE MOUNTED TULIPWOOD MARBLE-TOP BIBLIOTHÈQUE**

The three-quarter galleried top above two pairs of tambour doors with herringbone parquetry, centering a shallow secretaire drawer, the rounded corners raised on cabriole legs ending in scroll sabots; 47 1/4 x 40 x 16 1/4 in.

Estimate: \$ 2000.00 - \$ 3000.00



**Lot #596: RUSSIAN NEOCLASSICAL-STYLE GILT-METAL MOUNTED MAHOGANY EXTENSION DINING TABLE**

The divided top with gilt-metal edge above molded frieze spaced by horizontal panels, raised on fluted legs ending in thimble sabots, with two extra leaves; 30 x 8 ft. 8 in. x 5 ft.

Estimate: \$ 1000.00 - \$ 2000.00



**Lot #597: LOUIS XVI MAHOGANY MARBLE-TOP BONHEUR DU JOUR, STAMPED M. OHNEBERG (MARTIN OHNEBERG, MASTER 1773)**

The upper section with three-quarter galleried top above two mirrored doors over two short drawers flanked by fluted pilasters, the lower section with a leather-lined flap over a frieze drawer above two cupboard doors flanked by fluted pilasters, on square, fluted, tapered legs.

Estimate: \$ 1000.00 - \$ 2000.00



**Lot #598: LOUIS XVI-STYLE CARVED WALNUT FAUTEUIL A LA REINE**

The padded back with flower-carved breakarch crest, the padded armrests on ribbon-bound cornucopia supports, the bow-fronted seat raised on stop-fluted legs; 45 1/2 x 30 1/2 in.

Estimate: \$ 300.00 - \$ 600.00



**Lot #599: LOUIS XVI-STYLE CARVED GILTWOOD TABOURET A PIEDS**

The tooled leather seat above beaded and petal rip rails, on stop-fluted legs surmounted by paterae; 8 x 14 1/2 x 11 1/2 in.

Estimate: \$ 300.00 - \$ 500.00



**Lot #600: PAIR OF LOUIS XVI-STYLE GILT-METAL MOUNTED TULIPWOOD, SATINWOOD AND PARQUETRY TRICOTEUSES**

Stamped Fundacao, R.E.S.S., each tray top with bowed breakfront ends, on lyre-form supports joined by a pierced galleried shelf, on downswept legs; 28 1/4 x 28 1/2 x 13 1/2 in.

Estimate: \$ 600.00 - \$ 800.00