

Lots 301 - 310



Lot #301: STAFFORDSHIRE FIGURAL PITCHER OF ADMIRAL NELSON

Modeled with one sleeve tucked in waistcoat; 12 in.

Estimate: \$ 250.00 - \$ 350.00



Lot #302: FOUR STAFFORDSHIRE TABLE ARTICLES

Including a Prattware pitcher, a Queen's Rose pitcher, a stoneware Toby jug and a Wedgwood Imari pattern teapot; 5 to 9 in.

Estimate: \$ 200.00 - \$ 400.00



Lot #303: THREE STAFFORDSHIRE TABLE ARTICLES

Including a Bacchus jug, a hound jug and a plate with luster decoration. Together with a pair of porcelain figural candlesticks; pitchers 4 1/2 to 6 1/2 in., plate 7 3/4 in. diam.

Estimate: \$ 300.00 - \$ 600.00



Lot #304: FOUR STAFFORDSHIRE MUGS

One with transfer-printed decoration of a landscape with cottage; two with polychrome decoration of roses; and the last with relief-molded decoration of figures and spray of flowers; 3 1/2 to 4 1/2 in., 3 3/4 to 4 1/4 in. diam.

Estimate: \$ 200.00 - \$ 400.00



Lot #305: TEN STAFFORDSHIRE TABLE ARTICLES

Including a spatterware saucer and plate in the "School House" pattern, two creamware plates, a marbled ironstone plate, a flow blue plate, a red transfer-printed pitcher, a purple transfer-printed sugar bowl, a transfer-printed and polychromed saucer and a blue transfer-printed tea bowl; plates 6 to 9 3/4 in. diam.

Estimate: \$ 300.00 - \$ 600.00



Lot #306: SIX STAFFORDSHIRE PEARLWARE CHILD'S PLATES

Each of round, hexagonal or octagonal form, with transfer-printed and relief-molded decoration; 6 1/4 to 7 1/2 in. diam.

Estimate: \$ 200.00 - \$ 400.00



Lot #307: TWO STAFFORDSHIRE TRANSFER-PRINTED CHILD'S MUGS AND A RED TRANSFER-PRINTED CHILD'S TEA CUP

Together with a lusterware cup and two English porcelain mugs; tallest 2 1/2 in.

Estimate: \$ 100.00 - \$ 200.00



Lot #308: FIVE STAFFORDSHIRE TRANSFER-PRINTED CHILD'S MUGS

Including a "Dr. Franklin's Maxims" mug and several "Seasons" mugs. Together with a transfer-printed and gilt porcelain cup; tallest 2 7/8 in.

Estimate: \$ 200.00 - \$ 400.00



Lot #309: THREE STAFFORDSHIRE TRANSFER-PRINTED CHILD'S MUGS

Including a mochware mug with brown band and transfer decoration of dogs. Together with a transfer-printed "Victoria" mug and two porcelain mugs; tallest 2 3/4 in.

Estimate: \$ 150.00 - \$ 250.00



Lot #310: SEVEN STAFFORDSHIRE BLUE TRANSFER-PRINTED PLATES

Including two "Wild Rose" plates, "Blenheim, Oxforshire" soup plate, a Spode plate, a Clews plate with chinoiserie scene and two other plates; 8 3/4 to 10 1/2 in. diam.

Estimate: \$ 250.00 - \$ 350.00

Lots 311 - 320



Lot #311: TWO STAFFORDSHIRE BLUE TRANSFER-PRINTED PLATTERS

The larger, "Italian Scenery Turin," the other with chinoiserie decoration of figures and a pagoda; 15 and 21 1/4 in.

Estimate: \$ 150.00 - \$ 250.00



Lot #312: FIVE STAFFORDSHIRE BLUE TRANSFER-PRINTED SAUCE TUREENS AND COVERS, TWO STANDS AND THREE LADLES

Including a set with oriental scene, a C. Phillips assembled set with lakeside scene, a Davenport tureen and two other tureens; 7 1/4 to 8 3/4 in.

Estimate: \$ 150.00 - \$ 250.00



Lot #313: TWO STAFFORDSHIRE TRANSFER-PRINTED TEAPOTS AND TWO SUGAR BOWLS

The larger teapot with chinoiserie scene, the other with boy riding a goat, one bowl by Clews, with floral band, the other with s-scroll handles; 6 1/2 to 12 in.

Estimate: \$ 125.00 - \$ 225.00



Lot #314: THREE STAFFORDSHIRE BLUE TRANSFER-PRINTED TABLE ARTICLES

Including a soup tureen and cover, a large platter and a small platter; tureen 12 1/2 x 16 in.

Estimate: \$ 500.00 - \$ 800.00



Lot #315: STAFFORDSHIRE BLUE TRANSFER-PRINTED TWO-HANDLED RETICULATED BOWL AND TWO PLATTERS

The bowl of boat form with pierced ring band and c-scrolls, the smaller platter by Adams, "St. George Chapel Regent Street, London"; bowl 5 1/2 in., platters 15 to 19 in.

Estimate: \$ 300.00 - \$ 500.00



Lot #316: CONNECTICUT FEDERAL GRAIN-PAINTED TALL-CASE CLOCK

The scrolled pediment over astragal-shaped glazed door enclosing painted dial over waisted case, the box base with shaped apron; 89 1/2 x 20 x 12 3/4 in.

Estimate: \$ 800.00 - \$ 1200.00



**Lot #317: PENNSYLVANIA CHIPPENDALE MAHOGANY
TILT-TOP TEA TABLE**

The circular top tilting over a birdcage support above a baluster-turned standard, on cabriole legs terminating in snake feet; 28 1/2 in., 34 in. diam.

Estimate: \$ 800.00 - \$ 1200.00



Lot #318: FEDERAL CHERRY TALL-CASE CLOCK

The dial signed by Silas Hoadley (1786-1870), Plymouth, Connecticut, the arched scalloped crest over astragal-shaped glazed door enclosing painted wood dial above waisted case flanked by quarter columns, the molded base with shaped apron, on turned feet; 83 x 17 1/2 x 10 in.

Estimate: \$ 800.00 - \$ 1200.00



Lot #319: CHARLES II OAK BIBLE BOX

The hinged top with thumb-press ends and wrought-iron drop lock, the front carved with lunettes and acanthus leaves; 9 x 23 x 13 in.

Estimate: \$ 800.00 - \$ 1200.00



**Lot #320: FEDERAL GRAIN-PAINTED DESK AND
BOOKCASE**

The upper section with rectangular molded top over plain frieze above two paneled cupboard doors, the lower section with hinged fold-out writing surface over a case fitted with three long drawers, on turned feet; 6 ft. 2 in. x 38 x 19 in.

Estimate: \$ 800.00 - \$ 1200.00

Lots 321 - 330



Lot #321: FEDERAL CHERRY TALL-CASE CLOCK

The dial signed "Whiting, Winchester," the shaped crest over astragal-shaped glazed door enclosing painted dial over waisted case with chamfered corners, the square base with shaped apron; 82 1/2 x 15 1/4 x 9 1/4 in.

Estimate: \$ 800.00 - \$ 1200.00



Lot #322: BROWN-PAINTED CUPBOARD, POSSIBLY CANADIAN

The arched molded crest over two glazed cupboard doors above two paneled cupboard doors, on bracket feet; 65 1/2 x 36 x 16 1/4 in.

Estimate: \$ 1000.00 - \$ 1500.00



Lot #323: BLUE-PAINTED PINE STEP-BACK CUPBOARD

The upper section with molded cornice over two glazed cupboard doors enclosing two shelves, the lower section fitted with two paneled cupboard doors; 72 x 47 1/2 x 18 1/2 in.

Estimate: \$ 1000.00 - \$ 1500.00



Lot #324: NEW YORK FEDERAL TIGER MAPLE GRAINED AND DECORATED SETTEE

The tablet-shaped crest rail painted with guilloche bands in rectangular panels, over slats with similar decoration, above a bowed rush seat centered by downswept arms, on turned legs joined by stretchers; 33 x 69 x 20 in.

Estimate: \$ 2000.00 - \$ 3000.00



Lot #325: CHIPPENDALE INLAID MAHOGANY WALL MIRROR

The rectangular mirror plate in frame with shaped crest and apron; 28 x 14 1/4 in.

Estimate: \$ 200.00 - \$ 300.00



Lot #326: WINDSOR SACK-BACK ARMCHAIR AND A WINDSOR BOW-BACK SIDE CHAIR

The first with arched crest over turned spindles joined to a medial rail continuing into knuckle-carved arms centering a saddle seat, on splayed vase-turned legs joined by H-form stretcher; the second with arched crest over turned spindles above a saddle seat, on splayed vase-turned legs joined by H-form stretcher; 36 1/2 x 22 in. and 37 1/2 x 17 1/2 in.

Estimate: \$ 300.00 - \$ 500.00



Lot #327: CHIPPENDALE WALNUT TILT-TOP TEA TABLE

Branded "Elkins," the circular dished top tilting over baluster-turned standard, on cabriole legs terminating in snake feet; 28 3/8 in., 27 1/2 in. diam.

Estimate: \$ 300.00 - \$ 500.00



Lot #328: TWO NEW ENGLAND QUEEN ANNE PAINTED BANISTER-BACK SIDE CHAIRS

Each with shaped crest rail over four split banisters flanked by turned stiles above rush seat, on sausage-turned legs joined by stretchers, one chair with grain-painted finish, the other with black and gold painted finish; 38 x 16 in. and 39 x 18 1/2 in.

Estimate: \$ 250.00 - \$ 450.00



Lot #329: GEORGE III ROSEWOOD WHEEL BAROMETER

Signed "A. Hislop, Liverpool," the scrolled pediment centering brass urn finial over case fitted with hygrometer, thermometer, convex mirror, silvered dial and spirit level; 38 1/2 in., 10 1/8 in. diam.

Estimate: \$ 300.00 - \$ 500.00



Lot #330: NEW ENGLAND MAPLE DROP-LEAF TABLE

The rectangular top with hinged leaves over shaped apron, on turned legs terminating in pad feet; 26 3/4 x 36 x 16 1/2 in.

Estimate: \$ 300.00 - \$ 500.00

Lots 331 - 340



Lot #331: NEW ENGLAND WILLIAM AND MARY BLACK-PAINTED BANISTER-BACK ARMCHAIR AND SIDE CHAIR

Each with shaped crest rail over split banisters flanked by turned stiles above rush seat, on sausage-turned legs joined by stretchers; 46 1/2 x 23 1/2 in. and 45 1/2 x 19 in.

Estimate: \$ 300.00 - \$ 500.00



Lot #332: FEDERAL MAHOGANY CANDLESTAND

The shaped top tilting over birdcage support above urn-form standard, on spider legs (later painted checkerboard); 28 x 17 in.

Estimate: \$ 200.00 - \$ 400.00



Lot #333: WINDSOR SACK-BACK ARMCHAIR

The arched crest rail over turned spindles joined to a medial rail continuing into shaped arms centering a saddle seat, on splayed vase-turned legs joined by H-form stretcher; 37 1/2 x 24 in.

Estimate: \$ 200.00 - \$ 400.00



Lot #334: GREEN-PAINTED BLANKET CHEST

The rectangular hinged lid over conforming well above drawer over shaped apron, on bracket feet; 33 1/2 x 42 1/2 x 18 1/2 in.

Estimate: \$ 400.00 - \$ 800.00



Lot #335: RED-STAINED DOUGH BOX

With two-board lid, on square tapered legs; 29 x 47 x 20 1/2 in.

Estimate: \$ 250.00 - \$ 350.00



Lot #336: NEW ENGLAND CHIPPENDALE CHERRY CANDLESTAND

The rectangular top with rounded corners over baluster-turned standard, on cabriole legs; 25 1/2 x 14 x 13 1/2 in.

Estimate: \$ 300.00 - \$ 500.00



Lot #337: AMERICAN SCHOOL: GEORGE WASHINGTON'S BIRTHPLACE

Oil on canvas, 18 x 24 in., inscribed on the rock to the left of the man and woman "Here on 22 February 1732, George Washington was born."

Estimate: \$ 600.00 - \$ 800.00



Lot #338: AMERICAN SCHOOL: ALONG THE HUDSON

Oil on canvas, relined, 24 x 32 in.

Estimate: \$ 600.00 - \$ 800.00



Lot #339: AMERICAN SCHOOL: LAKE KATRINE (ULSTER COUNTY, NY)

Oil on canvas, 8 x 12 in., signed and dated lower right: A.M. Penney/188[4 or 9].

Estimate: \$ 100.00 - \$ 200.00



Lot #340: AMERICAN SCHOOL: HUDSON RIVER VIEW

Oil on panel, 10 x 15 1/8 in.

Estimate: \$ 150.00 - \$ 250.00

[Back](#)

[Next](#)

Lots 341 - 350



Lot #341: AMERICAN SCHOOL: THE DAVID BIRDSALL HOUSE, PEEKSKILL, NY

Pencil and pastel on paper, 10 1/8 x 13 3/4 in (sight).

Estimate: \$ 300.00 - \$ 500.00



Lot #342: FISHING AT DUSK

Oil on artistboard, 11 x 14 in.

Estimate: \$ 100.00 - \$ 200.00



Lot #343: ALBERT NEMETHY: THE PADDLEWHEELER WILSON G. HUNT

Oil on canvas, 12 1/2 x 18 1/2, signed lower right.

Estimate: \$ 500.00 - \$ 700.00



Lot #344: AMERICAN SCHOOL: FARM LIFE

Oil on canvas, 17 x 19 in.

Estimate: \$ 500.00 - \$ 700.00



Lot #345: ENGLISH SCHOOL: STONE COTTAGE

Watercolor on paper, 8 1/2 x 13 in. (sight), signed lower right [?] Gourley.

Estimate: \$ 75.00 - \$ 125.00



Lot #346: PASTORAL SCENE WITH COWS AND SHEEP

Mixed media on paper, 13 3/8 x 13 1/8 in. (sight).

Estimate: \$ 50.00 - \$ 100.00



Lot #347: FOLK ART PAINTING: COWS BY A LAKE

Oil on panel, 11 3/4 x 17 5/8 in.

Estimate: \$ 100.00 - \$ 200.00



Lot #348: THREE AMERICAN WATERCOLORS

One with two figures at the foot of a waterfall, a farmstead and a figure with cane; 8 x 10 in. to 10 3/4 x 13 3/4 in. (frame).

Estimate: \$ 250.00 - \$ 450.00



Lot #349: HOUSE ON A COUNTRY LANE

Oil on canvas, 11 1/2 x 14 1/2 in.

Estimate: \$ 200.00 - \$ 300.00



Lot #350: RIVER VIEW WITH TOWER

Oil on canvas, possibly relined, 11 x 17 in.

Estimate: \$ 200.00 - \$ 400.00

[Back](#)

[Next](#)

Lots 351 - 360



Lot #351: FARM SCENE WITH DISTANT WINDMILL

Oil on artistboard, 12 x 15 1/2 in.

Estimate: \$ 100.00 - \$ 200.00



Lot #352: IRISH SCHOOL: MOUNTAIN LAKE

Watercolor on paper, 13 3/4 x 22 1/2 in. (sight), signed lower left.

Estimate: \$ 300.00 - \$ 500.00



Lot #353: EUROPEAN SCHOOL: SHEPHERD AND COWS ON A WOODED PATH

Pastel on paper, 17 x 26 in. (sight), signed Hugard lower left.

Estimate: \$ 500.00 - \$ 700.00



Lot #354: EUROPEAN SCHOOL: COUNTRYSIDE WITH SHEPHERD AND GRAZING SHEEP

Oil on canvas, 21 x 25 1/2 in., signed Frans Dauge lower right.

Estimate: \$ 400.00 - \$ 600.00



Lot #355: EUROPEAN SCHOOL: RESCUE AT SEA

Gouache on paper, 13 3/4 x 18 3/4 in. (sight).

Estimate: \$ 300.00 - \$ 500.00



Lot #356: THREE CURRIER AND IVES HAND-COLORED LITHOGRAPHS

Including "The Outlet of Niagara River," "The Rail Road Suspension Bridge Near Niagara Falls" and "Sunnyside-on the Hudson," each framed; 9 1/4 to 13 in. x 13 1/4 to 17 in. (sight).

Estimate: \$ 400.00 - \$ 800.00



Lot #357: THREE CURRIER AND IVES HAND-COLORED LITHOGRAPHS

Including "Noah's Ark," "The Great Fire at Boston" and "The Tree of Intemperance." Together with a hand-colored mourning print; 7 1/2 to 13 1/2 in. x 9 1/2 to 13 1/2 in. (sight).
Estimate: \$ 300.00 - \$ 500.00



Lot #358: W.H. BARTLETT: "VIEW FROM FORT PUTNAM"

Colored engraving, 4 5/8 x 7 in. (sight).
Estimate: \$ 50.00 - \$ 75.00



Lot #359: ACKERMAN & CO., ARTHUR BETRAND PUBLISHERS: "FORT UNION ON THE MISSOURI"

Hand-colored lithograph by Bayer & Weber after Karl Bodner, matted and framed; 12 x 13 3/4 in. (sight).
Estimate: \$ 150.00 - \$ 200.00



Lot #360: PAIR OF ENGLISH HAND-COLORED ENGRAVINGS

"The Royal Mail Going Up Hill" and "The Royal Mail Coming Down Hill," March 1st, 1837, matted and framed; 13 1/4 x 17 1/4 in. (frame).
Estimate: \$ 100.00 - \$ 200.00

Lots 361 - 370



Lot #361: PRINTED TRADE ADVERTISEMENT

With illustration of a stage coach and lettering "BOUND FOR JOSEPH'S/CLOTHING HOUSE./263 MAIN ST., CATSKILL, N. Y.," framed; 11 1/2 x 15 1/2 in.

Estimate: \$ 200.00 - \$ 400.00



Lot #362: F.W. GREENOUGH (PUBLISHER), 1838: MA-KA-TAI-ME-SHE-KIA-KIAH

Lithograph in colors by J.T. Bowen, matted in walnut frame; 13 1/2 x 9 in. (sight).

Estimate: \$ 150.00 - \$ 250.00



Lot #363: REVERSE PAINTING ON GLASS

Depicting a maiden with feathered headdress and braided hair, inscribed lower center "Asiatin", walnut frame; 15 1/2 x 12 in.

Estimate: \$ 100.00 - \$ 200.00



Lot #364: PENNSYLVANIA CHIPPENDALE PAINT-DECORATED PINE AND POPLAR DOWER CHEST

The rectangular molded hinged lid over conforming well with till, above two drawers flanked by molded panels, the front painted with two shaped panels, inscribed "Elisabeth Gackli 1798," on ogee-bracket feet; 28 1/2 x 51 3/4 x 23 1/2 in. Note: A family with the surname of Caquelin settled in Pennsylvania in the early 18th century and spread to numerous counties including Berks, Lancaster, Franklin, Cumberland and Lebanon. Later generations and different branches of the family spelled the name variously as Cockley, Gockley, Cocklin, Gackley and Gackli.

Estimate: \$ 2000.00 - \$ 4000.00



Lot #365: PINE AND MAPLE TAVERN TABLE

The oval top over rectangular apron, on vase and ring-turned legs joined by box stretcher; 24 1/2 x 30 x 23 in.

Estimate: \$ 400.00 - \$ 600.00

Lot #366: NO LOT



Lot #367: FEDERAL SALMON-PAINTED PINE BLANKET CHEST

The rectangular molded hinged lid over conforming well, the case with two false drawers above two functional drawers, on bracket feet; 44 3/4 x 38 1/2 x 19 3/4 in.

Estimate: \$ 400.00 - \$ 600.00



Lot #368: TWO WINDSOR CONTINUOUS-ARM BOW-BACK CHAIRS

Each with arched crest continuing into shaped arms centering saddle seat, on splayed vase-turned or bamboo-turned legs joined by H-form stretcher; 38 x 20 1/4 in. and 35 x 22 3/4 in.

Estimate: \$ 400.00 - \$ 700.00



Lot #369: THREE CHILD'S HIGH CHAIRS

Including a brown-painted spindle back, a red-painted slat back and a red-painted pine high chair; 27 to 32 3/4 in.

Estimate: \$ 400.00 - \$ 800.00



Lot #370: THREE WINDSOR BAMBOO-TURNED BOW-BACK SIDE CHAIRS

Each with arched crest over turned spindles above saddle seat, on splayed legs joined by H-form stretcher; 36 x 15 in. to 37 1/2 x 17 in.

Estimate: \$ 400.00 - \$ 700.00

Lots 371 - 380



Lot #371: NEW ENGLAND CHIPPENDALE CHERRY SIDE CHAIR

The shaped crest rail over pierced splat above leather-upholstered slip seat, on square straight legs joined by stretchers; 39 x 19 3/4 x 17 in.

Estimate: \$ 500.00 - \$ 700.00



Lot #372: GEORGE III-STYLE MAHOGANY LIBRARY ARMCHAIR

The serpentine crest over padded back above upholstered seat flanked by downswept arms, on square straight legs joined by H-stretcher; 41 x 28 1/2 x 26 in.

Estimate: \$ 500.00 - \$ 700.00



Lot #373: DUTCH WALNUT MINIATURE SLANT-FRONT DESK

The rectangular top over sloped lid enclosing interior fitted with pigeon holes and short drawers, the case with long drawer, on bracket feet; 15 x 19 1/2 x 11 1/4 in.

Estimate: \$ 500.00 - \$ 700.00

Lot
374

Lot #374: CHIPPENDALE MAHOGANY TILT-TOP TEA TABLE

The circular top tilting over baluster-form standard, on cabriole legs terminating in snake feet; 27 1/2 in., 30 in. diam.

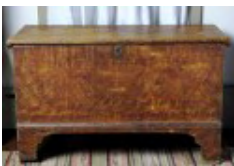
Estimate: \$ 500.00 - \$ 700.00



Lot #375: TWO WINDSOR SACK-BACK ARMCHAIRS

Each with arched crest over turned spindles joined to a medial rail continuing into shaped arms centering a saddle seat, on splayed vase-turned or bamboo-turned legs joined by H-form stretcher; 37 1/2 x 24 3/4 in. and 34 1/2 x 24 in.

Estimate: \$ 400.00 - \$ 800.00



Lot #376: GREEN-PAINTED PINE BLANKET CHEST

The rectangular hinged lid over conforming well fitted with till, on bracket feet; 24 x 40 x 17 1/2 in.

Estimate: \$ 400.00 - \$ 800.00



Lot #377: FIVE WINDSOR SIDE CHAIRS

Including four fan-back and one bow-back.
Estimate: \$ 400.00 - \$ 800.00



Lot #378: PAINTED TAVERN TABLE

The rectangular top with breadboard ends over conforming apron fitted with drawer, on block, vase and ring-turned legs joined by box stretcher; 29 x 41 x 28 1/4 in.
Estimate: \$ 500.00 - \$ 800.00



Lot #379: LATE CLASSICAL BROWN-PAINTED STEP-BACK CUPBOARD

The upper section with molded cornice over two glazed cupboard doors above five torus-molded short drawers, the lower section with rectangular molded top over conforming case fitted with one short and two long torus-molded drawers above two paneled cupboard doors flanked by columns, on scrolled feet; 7 ft. 2 in. x 4 ft. 6 1/2 in. x 21 1/2 in.
Estimate: \$ 3000.00 - \$ 5000.00



Lot #380: CHIPPENDALE PINE CORNER CUPBOARD, PROBABLY NEW JERSEY

The molded cornice over plain frieze above two paneled cupboard doors enclosing shelves, flanked by reeded pilasters, over two paneled cupboard doors centered by pilasters, on molded base; 79 x 53 in.
Estimate: \$ 1500.00 - \$ 3000.00

Lots 381 - 390



Lot #381: FEDERAL GRAIN-PAINTED BLANKET CHEST
The rectangular hinged lid over conforming well, the case with two false drawers above two functional drawers over shaped apron, on bracket feet; 34 3/4 x 40 1/4 x 18 in.
Estimate: \$ 600.00 - \$ 800.00



Lot #382: QUEEN ANNE MAHOGANY DROP-LEAF TABLE
The rectangular top with hinged shaped leaves over conforming apron, on turned legs terminating in pad feet; 28 1/4 x 15 x 37 in., 42 1/2 in. with leaves extended.
Estimate: \$ 700.00 - \$ 1000.00



Lot #383: GREEN-PAINTED TWO-DOOR CUPBOARD
With bootjack sides; 4 ft. 1 1/2 in. x 31 x 12 1/4 in.
Estimate: \$ 600.00 - \$ 800.00



Lot #384: HUDSON RIVER VALLEY RED-STAINED KAS
The projecting molded cornice over two paneled cupboard doors above base fitted with a single drawer, on ebonized bun feet (cornice replaced); 6 ft. 6 in. x 5 ft. 9 in x 25 1/2 in.
Estimate: \$ 3000.00 - \$ 5000.00



Lot #385: WROUGHT-IRON AND PAINT-DECORATED WEATHERVANE
29 x 31 in.
Estimate: \$ 300.00 - \$ 600.00



Lot #386: GREEN, RED AND BLACK-PAINTED WOOD MODEL OF A CANNON
19 3/4 x 57 1/4 in.
Estimate: \$ 1000.00 - \$ 2000.00



Lot #387: FOLK ART CARVED AND PAINTED WOOD STAG'S HEAD

18 3/4 x 10 1/2 in.

Estimate: \$ 400.00 - \$ 800.00

Lot
388

Lot #388: CARVED AND PAINTED WOOD SHIP'S FIGUREHEAD OF AN AFRICAN AMERICAN GENTLEMAN

The figure wearing jacket and cravat, holding club, mounted on stand; 45 x 13 1/2 in.

Estimate: \$ 1000.00 - \$ 2000.00



Lot #389: TWO NEW YORK GLASS AND PAINTED TIN GAS STREET LAMPS, BARTLETT STREET LAMP MFG. CO.

Each cylindrical bowl with domed top surmounted by urn and acorn finial, stenciled "BARTLETT'S PATENT/NEW YORK." Together with a pair of English brass candlesticks; lamps approx. 36 in.

Estimate: \$ 700.00 - \$ 1000.00



Lot #390: GRAIN-PAINTED POPLAR TABLETOP CHEST

The rectangular hinged lid over conforming well above drawer over shaped apron, on bracket feet; 10 x 13 1/2 x 6 1/2 in.

Estimate: \$ 300.00 - \$ 500.00

Lots 391 - 400



Lot #391: THREE PAINTED WOOD GAME BOARDS

One board with sixty-four squares, the others with eighty or one-hundred twenty squares; 16 x 16 in. and 21 x 26 in.

Estimate: \$ 300.00 - \$ 600.00



Lot #392: BURLWOOD BOX AND A TURNED BUTTER CHURN

Larger 14 1/2 in.

Estimate: \$ 250.00 - \$ 500.00



Lot #393: CAST PLASTER BUST, POSSIBLY OF P.T. BARNUM

Unsigned; 17 1/4 in.

Estimate: \$ 400.00 - \$ 800.00



Lot #394: PAINTED WOOD COMPOTE

Bears incised initials on underside. Together with fourteen pieces of stone fruit; compote 6 in., 10 1/2 in. diam.

Estimate: \$ 300.00 - \$ 600.00



Lot #395: TWO CAST PLASTER PHRENOLOGY HEADS

Larger 12 x 6 1/4 in.

Estimate: \$ 300.00 - \$ 500.00



Lot #396: GEORGE III PAINTED PINE DUMMY BOARD

Depicting a woman in a gown, holding a fan; 42 x 12 1/2 in.

Estimate: \$ 700.00 - \$ 900.00



Lot #397: VERRE ÉGLOMISÉ GAME BOARD

With fleur-de-peche and verde-antico squares within sponged border, in bird's-eye maple frame. Together with a painted game board; 19 1/2 x 19 1/2 in. and 17 1/2 x 19 in.

Estimate: \$ 150.00 - \$ 250.00



Lot #398: PAINTED WOOD GROCERY TRADE SIGN

The three-board panel with gray, white and gold lettering "JONES BROS./CASH PRICE LIST" and a column of grocery items on a black ground, inscribed "Bridges PTR," in gray-painted molded frame; 8 ft. 3/4 in. x 35 3/4 in. Note: This sign is believed to be from a Hillsdale, NY, grocer.

Estimate: \$ 500.00 - \$ 1000.00



Lot #399: FRENCH TÔLE-PEINTE TRADE SIGN

In two parts, the upper shaped panel with gilt grapevine decoration, the lower oblong panel with gold lettering "CAFE THERIOT"; 31 x 26 1/2 in.

Estimate: \$ 200.00 - \$ 400.00



Lot #400: COPPER BUILDING PLAQUE

The rectangular panel with raised lettering and date "Built 1870," in wood frame; 19 1/4 x 71 in.

Estimate: \$ 400.00 - \$ 600.00