

## Lots 101 - 110



**Lot #101: AMERICAN SCHOOL: PORTRAIT OF A CLOWN**

Watercolor and ink on paper, 17 1/2 x 10 1/2 in. (image).  
Estimate: \$ 700.00 - \$ 900.00



**Lot #102: FRANCIS CHAPIN (1899-1965): CIRCUS SCENE**

Watercolor on paper, 13 x 26 in. (image), signed lower right.  
Estimate: \$ 700.00 - \$ 900.00



**Lot #103: ALEXANDER CALDER (1898-1976): RHESUS MONKEYS**

Pencil sketch on paper, 19 1/4 x 14 in. (sight).  
Estimate: \$ 150.00 - \$ 250.00



**Lot #104: JULES PASCIN (1885 - 1930): "LE CLIENT"**

Ink and wash on paper, 12 x 9 1/2 in., signed upper right. From the collection of Robert Guccione. Exhibited: Nassau County Museum, 1994.  
Estimate: \$ 600.00 - \$ 800.00



**Lot #105: ALEXANDER ARCHIPENKO (1887-1964): ETUDE DE NU ASSIS**

Pencil on paper, 20 x 13 in., signed lower right and with letter of authentication on verso from Frances Archipenko Gray.  
Estimate: \$ 3000.00 - \$ 5000.00



**Lot #106: ABRAHAM WALKOWITZ (1878-1965): STANDING FEMALE NUDE**

Pencil on paper, 8 3/4 x 3 3/4 in. (sheet), signed and dated 1904.  
Estimate: \$ 800.00 - \$ 1200.00



**Lot #107: ANDRÉ DERAÏN (1880-1954): NUDE STUDY**

Sanguine chalk on paper, 21 3/4 x 13 1/2 in. (image), signed lower right.  
Estimate: \$ 500.00 - \$ 700.00



**Lot #108: ANDRÉ LHOTE (1885-1962): SEATED FEMALE NUDE**

Gouache on paper, 24 1/2 x 18 3/4 in., signed lower left. From the collection of Robert Guccione.  
Estimate: \$ 3000.00 - \$ 5000.00



**Lot #109: AMERICAN SCHOOL: PORTRAIT OF YOUNG WOMAN**

Charcoal on paper, 11 1/2 x 9 3/4 in., signed lower right: Ivan Olinsky.  
Estimate: \$ 400.00 - \$ 600.00



**Lot #110: BEN BENN (1884-1983): THE BATHERS**

Pastel and chalk on paper, 13 x 16 in., signed and dated '38 lower left.  
Estimate: \$ 300.00 - \$ 500.00

## Lots 111 - 120



**Lot #111: AMERICAN SCHOOL: THE BATHERS**

Pastel on paper, 14 x 19 in. (image), signed and dated '39 lower left.  
Estimate: \$ 500.00 - \$ 700.00



**Lot #112: AMERICAN SCHOOL: SUMMER AT THE LAKE**

Watercolor on paper, 12 x 19 in. (image), signed lower center, Bertram Goodman NYC.  
Estimate: \$ 500.00 - \$ 700.00



**Lot #113: GEORGE OVERBURY HART (1868-1933): "CROSSING THE LINE"**

Gouache on paperboard, 8 1/2 x 12 3/4 in., signed, dated Feb. 1916 and inscribed: Aboard S.S. Vestris/Crossing the Line.  
Estimate: \$ 500.00 - \$ 700.00



**Lot #114: GEORGE OVERBURY HART (1868-1933): MEXICAN PLAZA**

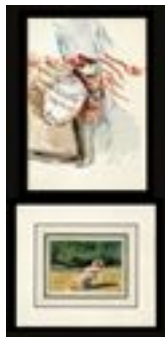
Watercolor and ink on paper, 17 x 22 1/2 in. (sight), signed and dated 1926 lower left.  
Estimate: \$ 500.00 - \$ 700.00

**Lot #115: NO LOT**



**Lot #116: 20TH CENTURY SCHOOL: REFINERY WORK**

Watercolor on paper, 16 1/2 x 24 1/2 in. (sight), signed and dated '31 lower right.  
Estimate: \$ 300.00 - \$ 500.00



**Lot #117: DAVID LEVINE (b. 1926): "KING COUNTY AMERICAN LEGION DRUMMER, 1958" AND "MILLY RESTING, 1956"**

Watercolors on paper, 9 1/4 x 6 1/2 in. and 2 3/4 x 4 1/4 in., signed.

Estimate: \$ 3000.00 - \$ 5000.00



**Lot #118: SIDNEY GOODMAN (b. 1936): VICTIM OF CIRCUMSTANCE**

Ink and watercolor on paper, 21 3/8 x 29 3/4 in., signed lower right, with label from Terry Dintenfass Gallery, NY on verso.

Estimate: \$ 500.00 - \$ 700.00



**Lot #119: SIDNEY GOODMAN (b. 1936): "BENDING OVER"**

Watercolor on paper, 15 x 22 1/4 in. (sheet), signed and dated 85-86 lower center.

Estimate: \$ 500.00 - \$ 700.00



**Lot #120: JO CICERO (20TH C.): "TOM SWIFT"**

Ink and wash on paper, 10 5/8 x 13 1/2 in. (sheet), signed and dated lower right, Cicero '60.

Estimate: \$ 200.00 - \$ 300.00

[To Top](#)



## Lots 121 - 130



**Lot #121: AFTER HENRI JOSEPH HARPIGNIES (1819-1916):  
HILLTOP LANDSCAPE**

Watercolor on artistboard, 9 x 13 in. (image), signed lower right.  
Estimate: \$ 500.00 - \$ 700.00



**Lot #122: WILLIAM PARTRIDGE BURPEE (1846-1940): AUTUMN  
AFTERGLOW**

Pastel on paper, 4 1/2 x 6 in., signed lower right.  
Estimate: \$ 700.00 - \$ 900.00



**Lot #123: WILLIAM NEWTON BARTHOLOMEW (1822-1898):  
COUNTRY ROAD IN SUMMER**

Watercolor on paper, 12 1/2 x 19 1/2 in.  
Estimate: \$ 500.00 - \$ 700.00



**Lot #124: WILLIAM HENRY (19TH C.): RUSTIC LANDSCAPE**

Watercolor on paper, 21 x 25 in., signed and dated 1882.  
Estimate: \$ 200.00 - \$ 300.00



**Lot #125: ENGLISH SCHOOL: AUTUMN LANDSCAPE**

Watercolor on paper, 6 3/4 x 8 3/4 in. (sheet), signed lower left, J.  
Varley.  
Estimate: \$ 500.00 - \$ 700.00





**Lot #126: RICHARD PARKES BONINGTON (1802-1828): SEASIDE**  
Watercolor on paper, 4 x 6 1/8 in. (sheet), initialed lower left.  
Estimate: \$ 1200.00 - \$ 1800.00



**Lot #127: 19TH CENTURY SCHOOL: LANDSCAPE**  
Pencil on paper, 3 1/4 x 5 1/4 in., initialed lower right.  
Estimate: \$ 200.00 - \$ 400.00



**Lot #128: EVERETT SHIN (1873-1953): PONT NEUF**  
Charcoal on paper, 9 1/2 x 7 1/2 in., signed in pencil lower left.  
Estimate: \$ 2000.00 - \$ 4000.00



**Lot #129: EUROPEAN SCHOOL: CARRIAGE STREET SCENE**  
Watercolor and charcoal on paper, 16 3/4 x 12 1/4 in. (sheet), with signature lower right.  
Estimate: \$ 300.00 - \$ 500.00



**Lot #130: HARTWELL LEON WOODCOCK (1853-1929): BERMUDA**  
Watercolor on paper, 18 x 25 in. (image), signed and dated 1921 lower left.  
Estimate: \$ 600.00 - \$ 800.00

[To Top](#)



## Lots 131 - 140



**Lot #131: HENRY PEMBER SMITH (1854-1907): SUMMER LANDSCAPE**

Watercolor on paper, 8 3/4 x 12 in., signed lower right.  
Estimate: \$ 2000.00 - \$ 3000.00



**Lot #132: CHARLES E. HANNAFORD (1863-1955): "DEPARTURE OF FISHING FLEET," PLYMOUTH**

Watercolor on paper, 17 x 26 1/2 in. (sight), signed, titled and dated 1946 lower left.  
Estimate: \$ 2000.00 - \$ 4000.00



**Lot #133: R. W. WARE: UPSTATE NEW YORK**

Watercolor on paper, 17 1/2 x 23 3/4 in., signed lower right.  
Estimate: \$ 300.00 - \$ 500.00



**Lot #134: JOHN HARE: CAPE COD WATERFRONT**

Watercolor on paper, 9 x 8 in., signed lower right.  
Estimate: \$ 200.00 - \$ 300.00



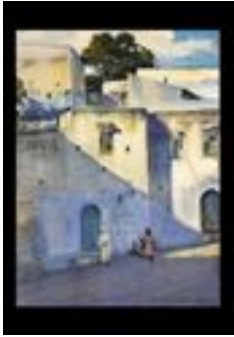
**Lot #135: PAUL LUCIEN MAZE (1887-1979): SKYLINE**

Pastel on paper, 14 1/2 x 21 in. (image), signed lower right. Ex collection Laurance Rockefeller.  
Estimate: \$ 2500.00 - \$ 3500.00



**Lot #136: JOSEPH DE MARTINI (1896-1984): MOUNTAINSCAPE WITH TRAIN**

Gouache on paper, 16 3/4 x 21 3/4 in. (image), signed lower right.  
Estimate: \$ 800.00 - \$ 1200.00



**Lot #137: ROMILLY FEDDEN (1875-1939): TANGIERS**

Watercolor on paper, 12 1/2 x 9 1/2 in. (sight), signed, inscribed and dated 1920 lower right.

Estimate: \$ 700.00 - \$ 900.00



**Lot #138: JEAN DUFY (1888-1964): TOWNSCAPE**

Ink on paper, 10 5/16 x 13 5/8 in. (sight), signed in pencil lower right.  
Estimate: \$ 200.00 - \$ 300.00



**Lot #139: AMERICAN SCHOOL: "ROMA"**

Watercolor on paper, 9 1/2 x 13 1/4 in. (sight), signed lower left, Millicent Drake.

Estimate: \$ 500.00 - \$ 700.00



**Lot #140: EUGENE G. BERMAN (1899-1972): MONUMENTAL PERSPECTIVE**

Ink and gouache on paper, 12 x 15 in., signed lower right.

Estimate: \$ 1000.00 - \$ 2000.00



## Lots 141 - 150



**Lot #141: GABOR PETERDI (1915-2001): "UNDERWATER VEGETATION"**

Watercolor on paper, 21 1/4 x 27 3/8 in., signed and dated "Peterdi '51" lower right.

Estimate: \$ 800.00 - \$ 1200.00



**Lot #142: GABOR PETERDI (1915-2001): UNTITLED**

Mixed media, 19 x 22 in., signed and dated '59.

Estimate: \$ 400.00 - \$ 600.00



**Lot #143: MIRKO (1910-1969): ABSTRACT COMPOSITION**

Crayon on paper, 10 3/4 x 13 1/4 in., signed lower right.

Estimate: \$ 600.00 - \$ 800.00



**Lot #144: DOROTHY DEHNER (1901-1994): UNTITLED**

Ink and wash on paper, 9 1/2 x 12 in., signed and dated '52.

Estimate: \$ 900.00 - \$ 1200.00



**Lot #145: DOROTHY DEHNER (1901-1994): "COUPLE"**

Mixed media on paper, 18 x 23 in., signed and dated '50, Albright-Knox exhibition label on verso.

Estimate: \$ 500.00 - \$ 900.00



**Lot #146: DAVID SMITH (1906-1965): "A SKETCH FOR SCULPTURE (RAVEN SERIES)" 1959**

Spray enamel on paper, 17 1/2 x 11 1/2 in. (sheet),; exhibited June-October 1990, The Hyde Collection, Glens Falls, NY.  
Estimate: \$ 7000.00 - \$ 9000.00



**Lot #147: HANS FALK (1918-2003): "NO. STR 16"**

Chalk on paper, 16 1/8 x 21 3/8 in., signed lower center and titled and dated 1960 on verso; and with Galerie Charles Lienhard, Zurich label on mount.  
Estimate: \$ 800.00 - \$ 1200.00



**Lot #148: ALEXANDER CALDER (1898-1976): UNTITLED**

Gouache on paper, 21 3/4 x 30 in. (image, sight), signed and dated '68 lower right. Provenance: M. Knoedler & Co. Inc., NYC.  
Estimate: \$ 15,000.00 - \$ 25,000.00



**Lot #149: KONRAD CRAMER (1888-1965): MAN AND FISH**

Watercolor and ink on paper, 12 9/16 x 9 1/4 in., signed and dated 3.1948 lower right.  
Estimate: \$ 200.00 - \$ 400.00



**Lot #150: DIEGO RIVERA (1886-1957): PROFILE PORTRAIT**

Chalk on paper, 19 x 12 3/4 in. (image), signed, dated 1944 and inscribed Mex. Cuernavaca.  
Estimate: \$ 1000.00 - \$ 1500.00

## Lots 151 - 160



**Lot #151: HANS HOFMANN (1880-1966): UNTITLED ABSTRACTION**

Gouache and roller pen on paper, 14 x 11 in.

Estimate: \$ 2000.00 - \$ 3000.00



**Lot #152: C. PATERNOSTO (b. 1931): GEOMETRIC ABSTRACTION**

Gouache on paper, 28 x 20 in., dated 1967.

Estimate: \$ 300.00 - \$ 500.00



**Lot #153: ATTRIBUTED TO ROBERT KUSHNER (b. 1949):  
ABSTRACT COMPOSITION**

Mixed media on paper, 48 x 17 3/4 in. (sheet).

Estimate: \$ 1000.00 - \$ 1500.00



**Lot #154: NIGEL HALL (1943): "#110"**

Charcoal on paper, 35 x 24 3/4 in., signed and dated "Nigel Hall/'79" lower right.

Estimate: \$ 300.00 - \$ 500.00



**Lot #155: LIZBETH MARANO (b. 1950): CIRCLES AND DOTS**

Mixed media on paper, 39 3/4 x 27 7/8 in. (sight), signed and dated lower right.

Estimate: \$ 200.00 - \$ 300.00



**Lot #156: KENNETH EDISON (b. 1940): "WALLY"**

Pencil on paper, 21 x 27 in. (sight), signed and dated '71 lower right.

Estimate: \$ 800.00 - \$ 1200.00



**Lot #157: ARMAND LAMONTAGNE (b. 1939): LOCK AND KEY**

Watercolor on paper, 18 1/2 x 14 1/2 in., signed and dated 1980 lower center.

Estimate: \$ 1000.00 - \$ 1500.00



**Lot #158: ARMAND LAMONTAGNE (b. 1939): BUD HEATON'S ANVIL**

Watercolor on paper, 16 1/2 x 24 in., signed and dated 1981 lower left, titled on verso.

Estimate: \$ 1500.00 - \$ 2500.00



**Lot #159: ARMAND LAMONTAGNE (b. 1939): GOSHAWK**

Watercolor on paper, 20 3/4 x 28 3/4 in., signed lower left, dated 1982 and titled on verso.

Estimate: \$ 1500.00 - \$ 2500.00



**Lot #160: ROBERT DENIRO SR. (1922-1993): STILL LIFE**

Watercolor on paper, 14 x 20 in., signed upper right.

Estimate: \$ 500.00 - \$ 700.00

[To Top](#)





## Lots 161 - 170



**Lot #161: DONALD EVANS (1945-1977): "NADORP, 1924"**

Watercolor on paper, 1 x 2 in., Fishbach Gallery label.

Estimate: \$ 800.00 - \$ 1200.00



**Lot #162: STEWART WHEELER (1912-1992): "TAPESTRY"**

Watercolor on paper, 16 7/8 x 22 7/8 in. (sight), signed lower right and titled lower left.

Estimate: \$ 300.00 - \$ 500.00



**Lot #163: MARK TOBEY (1890-1976): UNTITLED FIGURAL COMPOSITION**

Pastel and gouache on paper, 12 3/4 x 9 in. (sheet), signed lower right and dated 1964.

Estimate: \$ 5000.00 - \$ 7000.00



**Lot #164: MARK TOBEY (1890-1976): UNTITLED ABSTRACT COMPOSITION**

Watercolor on paper, 7 1/8 x 6 in., signed and dated 1980.

Estimate: \$ 4000.00 - \$ 6000.00



**Lot #165: MARK TOBEY (1890-1976): UNTITLED**

Watercolor and pencil on paper, 8 x 5 in. (sheet), signed lower left.

Exhibited: Santa Barbara Museum of Art, Dec. 12, 1987-Feb. 7, 1988.

Estimate: \$ 4000.00 - \$ 6000.00



**Lot #166: EUROPEAN SCHOOL: JACOB'S DREAM**

Oil on wood panel, 28 x 28 3/8 in.  
Estimate: \$ 2000.00 - \$ 3000.00



**Lot #167: EUROPEAN SCHOOL: THE JUDGMENT OF SOLOMON**

Oil on canvas, 37 x 52 1/4 in.  
Estimate: \$ 2000.00 - \$ 3000.00



**Lot #168: EUROPEAN SCHOOL: MOSES AND THE SERPENTS SCOURGE**

Oil on canvas, 41 1/4 x 54 1/2 in.  
Estimate: \$ 3000.00 - \$ 5000.00



**Lot #169: COLONIAL SCHOOL: THE BLESSED MOTHER AND HOLY CHILD**

Oil on canvas, 45 3/4 x 31 1/2 in., unstretched.  
Estimate: \$ 500.00 - \$ 700.00



**Lot #170: EUROPEAN SCHOOL: NATIVITY SCENE WITH MUSICIANS**

Oil on canvas, relined, 63 x 52 1/2 in.  
Estimate: \$ 1000.00 - \$ 1500.00

## Lots 171 - 180



**Lot #171: FLEMISH SCHOOL: MARY, ST. ANNE AND JESUS**

Oil on wood panel, 14 x 9 in., exhibited: Nassau County Museum of Art.  
From the collection of Robert Guccione.  
Estimate: \$ 1000.00 - \$ 2000.00



**Lot #172: EUROPEAN SCHOOL: MADONNA AND CHILD**

Oil on canvas, 29 1/2 x 36 1/4 in.  
Estimate: \$ 800.00 - \$ 1200.00



**Lot #173: EUROPEAN SCHOOL: MADONNA AND CHILD**

Oil on wood panel, 11 x 10 in.  
Estimate: \$ 800.00 - \$ 1200.00



**Lot #174: AFTER VERONESE: CHRIST WITH THE DOCTORS IN THE TEMPLE**

Oil on canvas, 76 x 154 in.  
Estimate: \$ 8000.00 - \$ 12,000.00



**Lot #175: FLEMISH SCHOOL: CRUCIFIXION**

Oil on panel, 50 1/2 x 34 1/2 in., signed lower center; exhibited "From Botticelli to Matisse," Nassau County Museum of Art, 1994. From the collection of Robert Guccione.  
Estimate: \$ 2000.00 - \$ 3000.00



**Lot #176: CONTINENTAL SCHOOL: JESUS AND VERONICA**

Oil on copper, 17 x 13 1/2 in.

Estimate: \$ 700.00 - \$ 900.00



**Lot #177: NORTHERN EUROPEAN SCHOOL: SAINT CATHERINE**

Oil on panel, 18 1/2 x 14 1/2 in. From the collection of Robert Guccione.

Estimate: \$ 3000.00 - \$ 5000.00



**Lot #178: ATTRIBUTED TO LUCIANO BORZONE (1590-1645):  
SOLOMON PRESENTING THE HEAD OF ST. JOHN TO HEROD**

Oil on canvas, relined, 38 x 50 in. From the collection of Robert Guccione.

Estimate: \$ 3000.00 - \$ 5000.00



**Lot #179: EUROPEAN SCHOOL: THE MONEY COUNTER**

Oil on canvas, 21 1/4 x 16 in.

Estimate: \$ 800.00 - \$ 1200.00



**Lot #180: ATTRIBUTED TO JAN SWART VAN GRONIGEN:  
HORSEMAN IN A LANDSCAPE**

Oil on panel, 16 1/4 x 13 1/4 in., backed with masonite, deaccessioned from the Akron Art Institute and exhibited "From Botticelli to Matisse," Nassau County Museum of Art, 1994. From the collection of Robert Guccione.

Estimate: \$ 1000.00 - \$ 2000.00

## Lots 181 - 190



**Lot #181: CONTINENTAL SCHOOL: HORSEMEN**

Oil on canvas, 19 x 25 3/4 in.

Estimate: \$ 1000.00 - \$ 1500.00



**Lot #182: EUROPEAN SCHOOL: CALVARY SKIRMISH**

Oil on canvas, 19 x 26 in.

Estimate: \$ 1000.00 - \$ 1500.00



**Lot #182A: POLISH SCHOOL: MILITARY PATROL**

Oil on paper laid down on board, 16 1/8 x 12 3/8 in., with signature and date lower right, Wojciech Kossak/1917.

Estimate: \$ 700.00 - \$ 900.00



**Lot #183: CONTINENTAL SCHOOL: LANDSCAPE WITH MILL AND TRAVELERS**

Oil on canvas, 28 x 20 1/4 in.

Estimate: \$ 2000.00 - \$ 3000.00



**Lot #184: CONTINENTAL SCHOOL: "LE VIELLE AVEC CHIEN"**

Oil on wood panel, 9 1/8 x 6 1/4 in.

Estimate: \$ 800.00 - \$ 1200.00





**Lot #185: EUROPEAN SCHOOL: FRIAR READING IN THE WOODS**

Oil on wood panel, 11 3/4 x 10 1/4 in.

Estimate: \$ 400.00 - \$ 600.00



**Lot #186: NORTHERN EUROPEAN SCHOOL: WINTER LANDSCAPE**

Oil on wood panel, 8 x 6 in.

Estimate: \$ 1000.00 - \$ 1500.00



**Lot #187: CHARLES LEICKERT (1816-1907): DUTCH TOWN IN WINTER**

Oil on wood panel, 12 5/8 x 9 5/8 in., signed lower right.

Estimate: \$ 2000.00 - \$ 4000.00



**Lot #188: 19TH CENTURY SCHOOL: DUTCH FAMILY SCENE**

Oil on canvas, 16 x 21 1/4 in., signed lower left.

Estimate: \$ 1000.00 - \$ 2000.00



**Lot #189: EUROPEAN SCHOOL: HUNTERS AND DOGS**

Oil on canvas, relined, 17 1/4 x 26 in.

Estimate: \$ 1800.00 - \$ 2200.00



**Lot #190: EUROPEAN SCHOOL: THE MILKMAID**

Oil on panel, 20 3/4 x 15 1/2 in.

Estimate: \$ 800.00 - \$ 1200.00

[To Top](#)



## Lots 191 - 200



**Lot #191: DUTCH SCHOOL: TAVERN SCENE**

Oil on wood panel, 20 x 26 1/2 in.

Estimate: \$ 1800.00 - \$ 2200.00



**Lot #192: EUROPEAN SCHOOL: FAMILY MEAL**

Oil on wood panel, 8 5/8 x 12 in.

Estimate: \$ 1000.00 - \$ 1500.00



**Lot #193: RUDOLF W. A. LEHMANN (1819-1905): FAMILY SCENE**

Oil on canvas, 31 1/8 x 25 5/8 in., signed and dated lower right ROME 1852.

Estimate: \$ 5000.00 - \$ 7000.00



**Lot #194: JAMES BAKER PYNE (1800-1870): HILLSIDE VILLAGE**

Oil on canvas, relined, 26 x 38 in., signed lower left and dated 1851.

Estimate: \$ 700.00 - \$ 900.00



**Lot #195: EUROPEAN SCHOOL: PALLAS ATHENA**

Oil on canvas, relined, 44 1/2 x 34 in., signed illegibly lower right.

Estimate: \$ 4000.00 - \$ 6000.00



**Lot #196: EUROPEAN SCHOOL: CLASSICAL COMPOSITION**

Oil on canvas, 14 3/8 x 21 5/8 in.

Estimate: \$ 500.00 - \$ 700.00



**Lot #197: CONTINENTAL SCHOOL: CLASSICAL MAIDEN PLAYING A LYRE**

Oil on canvas, 23 1/2 x 15 5/8 in., signed and dated lower right, P. de Laszlo 1894.

Estimate: \$ 2500.00 - \$ 3500.00



**Lot #198: CONTINENTAL SCHOOL: NUDES IN THE WOODS**

Oil on wood panel, 25 3/4 x 19 3/4 in.

Estimate: \$ 4000.00 - \$ 6000.00



**Lot #199: EUROPEAN SCHOOL: MAIDENS BATHING BY A MILL**

Oil on wood panel, 17 1/8 x 26 5/8 in., cradled, signed and dated lower right ?St.M? 18?.

Estimate: \$ 1500.00 - \$ 2500.00



**Lot #200: FRENCH SCHOOL: CAPRI**

Oil on canvas, relined, 18 x 29 1/4 in., signed lower right, H. Bernard.

Estimate: \$ 3000.00 - \$ 5000.00