

## Lots 1001 - 1010



### Lot #1001: HISPANO-MORESQUE TYPE LUSTERWARE BASIN

The deep bowl with the head of a bearded man wearing turban, grape-vine everted rim, reglued; 3 3/4 in., 17 1/4 in. diam.

Estimate: \$ 400.00 - \$ 600.00



### Lot #1002: ISLAMIC GREEN-GLAZED POTTERY BASIN

The double fish rondel within flowerhead band, calligraphic cavetto and vinework scalloped rim, reglued and restored; 14 1/4 in. diam.

Estimate: \$ 200.00 - \$ 400.00



### Lot #1003: ITALIAN BAROQUE-STYLE PAINTED TERRACOTTA GROUP

Modeled as the seated Virgin holding the Christ Child, who embrace the child John the Baptist, a lamb at his feet, hollow back; 16 1/2 x 12 1/4 x 8 1/2 in.

Estimate: \$ 400.00 - \$ 800.00



### Lot #1004: BAROQUE BRASS PRICKET STICK

The spiral twist and vase stem on triangular base with mask heads and foliage, tripod claw and ball feet; 4 3/8 in.

Estimate: \$ 200.00 - \$ 400.00



### Lot #1005: PAIR OF ITALIAN TIN-GLAZED EARTHENWARE APOTHECARY JUGS

Each ovoid bowl with spout and handles, acanthus bands and marked "Melrosab Solu" and "Su. Di Bettonca"; 8 3/4 and 8 7/8 in.

Estimate: \$ 500.00 - \$ 700.00



### Lot #1006: ITALIAN TIN-GLAZED EARTHENWARE JAR

The ovoid sky blue ground bowl with green and yellow acanthus leaf scroll; 8 7/8 in.

Estimate: \$ 250.00 - \$ 350.00



**Lot #1007: NEAR EASTERN TURQUOISE-GLAZED POTTERY VASE**

With tapered bowl and sloping shoulder; 13 3/8 in.

Estimate: \$ 250.00 - \$ 350.00



**Lot #1008: ITALIAN MICRO-MOSAIC INLAID SILVERED METAL CRUCIFIX**

Centered by "Roma" and two rondels of the Holy Ghost and implements of the Passion, the ends with quatrefoil views of St. Peter's and three other Roman churches; 10 1/2 x 6 1/4 in.

Estimate: \$ 200.00 - \$ 300.00



**Lot #1009: PAIR OF ITALIAN BAROQUE BRASS PRICKET STICKS**

Each urn and vase stem with square urn pan centering the iron pricket, on flared base; 22 7/8 in., 27 in. to pricket.

Estimate: \$ 500.00 - \$ 700.00



**Lot #1010: TURKISH TURQUOISE-GLAZED POTTERY JAR**

The tapered bowl with four reserves of a king riding a tiger, a dancing couple, ganesha and monkey-head deity, on a floral vine ground, floral-banded borders; 17 1/4 in..

Estimate: \$ 500.00 - \$ 700.00

## Lots 1011 - 1020



**Lot #1011: FRENCH RENAISSANCE LIMOSAN ENAMEL TABLE CANDLESTICK**

With segmented stem, the nozzle and base with mask heads in cameo supporting drapery swags or pearlwork; 8 1/4 in., 4 1/2 in. diam.

Estimate: \$ 800.00 - \$ 1200.00



**Lot #1012: ITALIAN CARVED, PAINTED AND GILTWOOD FIGURE OF THE VIRGIN**

Inscribed, "No Puio Iot Vervaeae Anatore Virginis Q Celebrare," modeled seated on a stepped base, wearing cloak and belted dress; 27 x 15 1/2 x 13 1/2 in.

Estimate: \$ 3000.00 - \$ 5000.00



**Lot #1013: TWO BAROQUE BRASS PRICKET STICKS**

Each with segmented vase and urn stem, the larger on dome foot, the other on triangular base and ball feet; 14 3/8 and 15 1/2 in.

Estimate: \$ 700.00 - \$ 900.00



**Lot #1014: FLORENTINE RENAISSANCE-STYLE CARVED MARBLE BUST OF A GIRL**

Facing front, the parted hair with braided back, wearing floral embroidered blouse, the base with blind tablet, guilloche scrolls and recumbent nudes with cherubs; approx. 20 x 19 in.

Estimate: \$ 1500.00 - \$ 3000.00



**Lot #1015: ARY-JEAN-LEON BITTER (b. 1883): "CHRISTUS MORTUUS"**

Ivory-glazed plaster with incised signature; 3 x 15 x 5 3/4 in.

Estimate: \$ 200.00 - \$ 400.00



**Lot #1016: FRENCH TERRACOTTA HEAD OF CHRIST**

Modeled with closed eyes in agony, the parted long hair, on velvet-covered stand; 6 1/2 x 6 in.

Estimate: \$ 500.00 - \$ 800.00



**Lot #1017: CONTINENTAL NEOCLASSICAL CARVED MARBLE HEAD OF A WOMAN**

Facing forward, with parted and knotted coif on bronze stand; 17 in. with stand.  
Estimate: \$ 1500.00 - \$ 2500.00



**Lot #1018: ITALIAN CARVED MARBLE TORSO OF HERCULES, AFTER THE ANTIQUE**

The nude god in contrapposto pose, tip of beard seen between shoulders, on brass rod and stepped lucite stand; 14 1/2 in., 17 in. with stand.  
Estimate: \$ 1500.00 - \$ 2500.00



**Lot #1019: ITALIAN BAROQUE CARVED MARBLE HEAD OF A CHERUB**

Facing forward, with parted wavy hair, on wrought iron stand; 9 in., 10 3/4 in. with stand.  
Estimate: \$ 1000.00 - \$ 1500.00



**Lot #1020: BAROQUE CARVED MARBLE BUST OF A CHILD**

Turned slightly left above bare shoulders, on a verde antico stand; 13 1/4 x 10 1/4 in., 17 1/4 in. with stand.  
Estimate: \$ 2000.00 - \$ 3000.00

## Lots 1021 - 1030



### Lot #1021: ANCIENT TERRACOTTA RELIEF HEAD FRAGMENT

The hair pulled back and wearing a diadem, wood block stand; 4 1/4 in., 7 1/4 in. with stand.

Estimate: \$ 100.00 - \$ 200.00



### Lot #1022: TWO CARVED WOOD FIGURES

The one a dancer wearing a tiered headdress with bent knees on wood stand, the other seated; 15 1/4 and 13 in.

Estimate: \$ 150.00 - \$ 250.00



### Lot #1023: RUSSIAN PAINTED WOOD ICON: THE ASCENSION

Centered by Christ against sun burst flanked by two saints, above three kneeling saints; 12 3/8 x 10 3/8 in.

Estimate: \$ 500.00 - \$ 800.00



### Lot #1024: ITALIAN SCHOOL: ST. JOHN THE BAPTIST

Oil on panel, the bearded figure wearing cloaked hair tunic and holding a spindle cross, right hand raised; 22 x 12 1/4 in.

Estimate: \$ 1500.00 - \$ 2500.00



### Lot #1025: FRENCH SCHOOL: FIGURE OF A FEMALE SAINT

Carved and painted wood, with parted blonde hair, ochre cloak over red dress and holding a lidded goblet, on separate stand; 43 1/2 x 13 in.

Estimate: \$ 2500.00 - \$ 4500.00



### Lot #1026: ITALIAN BAROQUE CARVED WALNUT CREDENZA

The dentil-banded top above two drawers with brass pulls, spaced by corbels, the case enclosed by pair of doors with egg-and-dart moldings flanked by cabochon and guilloche pilasters, on lion's paw feet; 46 1/4 in. x 4 ft. 5 1/2 in. x 21 1/2 in.

Estimate: \$ 2000.00 - \$ 3000.00



**Lot #1027: AUSTRIAN CARVED WALNUT EXTENSION TABLE**

The oval expanding top with paper label, "R. Perl, Wien" and egg-and-dart edge and with two hinged leg sections ending in brass beaded casters, the hexagonal base with adorsed dolphins and hexafoil leaf-tip base; 29 in. x 5 ft. 7 in. x 6 ft. 3 in.

Estimate: \$ 2000.00 - \$ 4000.00



**Lot #1028: ITALIAN BAROQUE CARVED WALNUT CREDENZA**

The top with egg-and-dart applied edge, the two frieze drawers with wood pulls, spaced by pendant acanthus leaves, above two doors with foliate rondels, spaced by caryatids, on bracket feet; 38 x 47 1/2 x 13 3/4 in.

Estimate: \$ 1000.00 - \$ 1500.00



**Lot #1029: RENAISSANCE-STYLE CARVED WALNUT FOLDING LIBRARY LADDER**

Incorporating seven steps with hinged two-Corinthian column support ending in rosette-carved trestle feet, held by wrought iron latch; 5 ft. 2 1/2 in. x 24 in.

Estimate: \$ 800.00 - \$ 1200.00



**Lot #1030: CONTINENTAL BAROQUE STEEL-MOUNTED WALNUT COFFRET**

The hinged lid with raised section, opening to velvet-lined recess and a pull-up slide concealing a lateral drawer, with waved lower edge and drop handles; 8 1/2 x 15 x 10 1/4 in.

Estimate: \$ 400.00 - \$ 600.00

## Lots 1031 - 1040



**Lot #1031: THREE ITALIAN BAROQUE-STYLE IVORY-INLAID WALNUT ARMCHAIRS**

Each shaped top rail and splat with geometric tablet, the uprights with mask head terminals, the set with concentric circles, on block legs joined by shaped front stretcher; 4 ft. 3 1/2 in. x 23 1/4 in.

Estimate: \$ 1000.00 - \$ 1500.00



**Lot #1032: ITALIAN BAROQUE CARVED WALNUT CENTER TABLE**

The top with applied egg-and-dart edge and the two frieze drawers with brass pulls and flowerhead bands, the scrollwork trestles on tiered flowerhead feet; 32 in. x 5 ft. 6 in. x 25 1/2 in.

Estimate: \$ 1200.00 - \$ 1800.00



**Lot #1033: ITALIAN RENAISSANCE CARVED WALNUT CREDENZA**

The later rectangular top above dentil band, a guilloche-carved drawer and two doors with brass knobs, flanked by guilloche vertical panels, molded base and bracket feet; 41 3/4 x 36 1/2 x 18 1/2 in.

Estimate: \$ 2000.00 - \$ 3000.00



**Lot #1034: PAIR OF ITALIAN BAROQUE-STYLE CARVED, PAINTED AND PARCEL-GILT SMALL MIRRORS**

Each plate engraved with stellate medallion, within an acanthus leaf-carved frame with cherub head crest and apron; 22 1/2 x 12 in.

Estimate: \$ 1500.00 - \$ 2000.00



**Lot #1035: VENETIAN ROCOCO-STYLE SMALL OVAL MIRROR**

The beveled plate within engraved and tiered opalescent borders, shaped crest and apron; 31 x 18 1/4 in.

Estimate: \$ 1000.00 - \$ 2000.00



**Lot #1036: RENAISSANCE-STYLE GILT-METAL CANDLESTICK LAMP**

The reeded and leaf stem above a drapery-hung urn and triangular base with winged cherub heads; 34 in.

Estimate: \$ 150.00 - \$ 250.00



**Lot #1037: ITALIAN TRANSITIONAL CARVED OAK BANQUETTE WITH GRISAILLE OVAL**

The pierced back with blind fret band and crest centered by a panel with two putti flanking a flame-topped column, beneath a cherub, raised on nude male or female supports; 5 ft. 5 in. x 9 ft. 2 in. x 33 in.

Estimate: \$ 5000.00 - \$ 10,000.00



**Lot #1038: CONTINENTAL BAROQUE INLAID WALNUT SIDE TABLE**

The top dark-stained moldings and c-scroll corners, the shaped frieze with scrolls and central pendant, on turned legs joined by waved x-stretcher ending in bun feet; 31 x 39 1/2 x 24 in.

Estimate: \$ 800.00 - \$ 1200.00



**Lot #1039: PAIR OF ITALIAN ROCOCO-STYLE CARVED GILTWOOD SMALL MIRRORS**

Each rectangular plate with "drapery" hung frame surmounted by a cherub; 15 x 11 in.

Estimate: \$ 300.00 - \$ 500.00



**Lot #1040: ITALIAN BAROQUE CARVED WALNUT CREDENZA**

The lift top with bracket and flute bands and the frieze containing two drawers with brass lion-headed drop pulls, above a door and a base drawer, on bracket feet.

Estimate: \$ 400.00 - \$ 800.00



## Lots 1041 - 1050



### Lot #1041: ITALIAN RENAISSANCE-STYLE ARMORIAL PAINTED CASSONE

With hinged lid, the incurved front with wreath encircled quarter-armorial flanked by red or white dotted panels enclosing rondels, the sides with monograms, on marbelized base; 20 in. x 4 ft. x 17 1/2 in.

Estimate: \$ 600.00 - \$ 800.00



### Lot #1042: CONTINENTAL BAROQUE-STYLE BRASS TEN-LIGHT CHANDELIER

The knopped and urn stem supporting the serpentine arms ending in fowl heads, circular pans and nozzles; 35 1/2 x 28 in.

Estimate: \$ 1500.00 - \$ 2000.00



### Lot #1043: PAIR OF REGENCE-STYLE GILT-METAL TWO-LIGHT WALL APPLIQUES

Each back plate applied with winged caryatid supporting the s-scroll arms ending in beaded pans and leaf-banded nozzles; 19 x 12 x 7 in.

Estimate: \$ 600.00 - \$ 800.00



### Lot #1043A: VENETIAN GLASS ROCOCO-STYLE TWELVE-LIGHT CHANDELIER

The pear-form skeletal frame with central finial and pendant, floral stems and leafage and supporting the s-scroll drop-hung arms ending in leafy pans and spiral reeded nozzles; 4 ft. x 33 in.

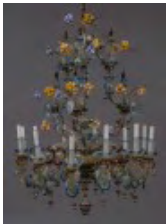
Estimate: \$ 2500.00 - \$ 4500.00



### Lot #1044: PAIR OF LOUIS XV-STYLE MOLDED GLASS AND GILT-METAL TWO-LIGHT WALL APPLIQUES

Each parrot and reeded urn back supporting the spiral twist arms entwined with branches; 18 1/2 x 13 in.

Estimate: \$ 300.00 - \$ 500.00



### Lot #1045: VENETIAN GLASS ROCOCO-STYLE TWELVE-LIGHT CHANDELIER

The pear-form skeletal frame with central finial and pendant, floral stems and leafage and supporting the s-scroll drop-hung arms ending in leafy pans and spiral reeded nozzles; 4 ft. x 33 in.

Estimate: \$ 2500.00 - \$ 4500.00



**Lot #1046: ART NOUVEAU GLASS-MOUNTED BRONZE-PATINATED COBRA LAMP**

The stem modeled as a coiled cobra supporting the hammered and dome pendant shade with band of textured tiles above fabric fringe; 24 1/2 x 18 1/2 x 11 in.

Estimate: \$ 800.00 - \$ 1200.00



**Lot #1047: VENETIAN GLASS ROCOCO-STYLE SIX-LIGHT FLOOR CANDELABRUM**

The multi-part quilted stem applied with pink daffodil heads and supporting the s-scroll arms fitted with loose rings, beneath band of daffodil stems; 6 ft. 2 in. x 24 1/2 in.

Estimate: \$ 600.00 - \$ 800.00



**Lot #1048: PAIR OF LOUIS XV-STYLE PORCELAIN AND GLASS-MOUNTED SILVERED METAL TWO-LIGHT CANDELABRA**

Each lyre-form back with porcelain flowers and supporting the s-scroll arms ending in drop-hung waved drip pans, fluted bell-form base; 16 1/4 x 8 3/4 in.

Estimate: \$ 600.00 - \$ 800.00



**Lot #1049: FRENCH GLASS CARAFFE AND BEAKER SET, MOUNTED AS A LAMP**

The bottle with grisailles reserves of the Three Graces, the cup with winged god; 19 3/4 in.

Estimate: \$ 100.00 - \$ 200.00



**Lot #1050: TWO ITALIAN CAMEO-CUT CONCH SHELLS**

The one with two classical female profiles and a hawk beneath crescent moon and stars, the other with classical female profile; 5 3/4 and 6 in.

Estimate: \$ 250.00 - \$ 450.00

## Lots 1051 - 1060



**Lot #1051: PAIR OF PORCELAIN-MOUNTED GILT-METAL CANDLESTICK LAMPS**

Modeled as a girl or boy cherub supporting leaf-and-flute nozzle from which rise floral stems, on filigree-banded oblong hexagonal base; 11 3/4 in.

Estimate: \$ 250.00 - \$ 450.00



**Lot #1052: VENETIAN GLASS ROCOCO-STYLE TWELVE-LIGHT CHANDELIER**

The pear-form skeletal frame with central finial, pendant, flower stems and leafage, and supporting the s-scroll drop-hung arms ending in foliate pans and spiral reeded nozzles; 46 x 43 in.

Estimate: \$ 2500.00 - \$ 4500.00



**Lot #1053: PAIR OF LOUIS XVI-STYLE GILT-METAL TWO-LIGHT WALL APPLIQUES**

Each back modeled with a caduceus and winged Mercury helmet, supporting the spiral twist arms ending in circular pans; 15 7/8 x 12 x 4 3/4 in.

Estimate: \$ 500.00 - \$ 700.00



**Lot #1054: PAIR OF LOUIS XVI-STYLE COPPER-PATINATED METAL TWO-LIGHT WALL APPLIQUES**

Each bow-tied tasseled ribbon back supporting the foliate-cast s-scroll arms, ending in circular pans and foliate-banded nozzles; 18 3/4 x 10 3/4 x 7 in.

Estimate: \$ 600.00 - \$ 800.00



**Lot #1055: PAIR OF LOUIS XVI-STYLE CARVED GILTWOOD CHAISES A LA REINE**

Each balloon-shape back and seat with guilloche borders, raised on leaf-capped cabriole legs; 36 x 19 in.

Estimate: \$ 500.00 - \$ 700.00



**Lot #1056: ITALIAN BAROQUE INLAID WALNUT CASSONE**

With hinged lid, the front with three panels including two hands shaking and two armorials, the sides with wrought iron drop handles; 21 1/2 in. x 5 ft. 5 1/2 in. x 22 1/2 in.

Estimate: \$ 1000.00 - \$ 1500.00



**Lot #1057: GERMAN BAROQUE PART-EBONIZED AND CARVED OAK SCHRANK**

The overhanging cornice and foliate-carved frieze with hearts, above a pair of double-paneled doors spaced by fluted pilasters, on bun feet; 6 ft. 1 3/4 in. x 5 ft. 2 1/2 in. x 26 in.

Estimate: \$ 1500.00 - \$ 3000.00



**Lot #1058: SIGNED LOUIS XV TULIPWOOD AND MARQUETRY SECRETAIRE A ABATTANT**

Stamped Delorm (Adrien Delorme, master 1748); the serpentine-fronted breche d'Aleppes marble top above a fall front with flower-filled basket, opening to fitted interior, the lower part enclosed by a pair of floral-inlaid doors on short legs with foliate sabots; 46 1/4 x 33 1/2 x 14 in.

Estimate: \$ 2000.00 - \$ 4000.00



**Lot #1059: SET OF FOUR LOUIS XV-STYLE MOLDED GLASS AND GILT-METAL SINGLE-LIGHT WALL APPLIQUES**

Each parrot and reeded urn back supporting the spiral twist arm entwined with branchwork; 21 1/2 x 13 x 5 3/4 in.

Estimate: \$ 800.00 - \$ 1200.00



**Lot #1060: PAIR OF LOUIS XVI-STYLE GILT-BRONZE TWO-LIGHT WALL APPLIQUES**

Each tapered back with vertical beaded knob supporting the c-scroll arms; 18 1/2 x 9 in.

Estimate: \$ 700.00 - \$ 1000.00

## Lots 1061 - 1070



**Lot #1061: DIRECTOIRE MAHOGANY EXTENSION GATE-LEG TABLE**

With two d-shape leaves, the frame on rectangular tapered legs ending in brass thimble casters; 28 1/4 x 24 1/2 x 4 ft. 6 in.

Estimate: \$ 800.00 - \$ 1200.00



**Lot #1062: LOUIS XV PROVINCIAL-STYLE WALNUT TABLE A ECRIRE**

The serpentine-fronted top with tooled brown leather panel, above a drawer at one end and raised on cabriole legs ending in brass foliate sabots; 26 1/2 x 34 x 19 3/4 in.

Estimate: \$ 400.00 - \$ 800.00



**Lot #1063: SET OF FOUR LOUIS XV-STYLE GILT-METAL THREE-LIGHT WALL APPLIQUES**

Each reeded urn, anthemion and foliate back with s-scroll arms rising from ram's heads and ending in beaded pans and foliate-banded nozzles; 22 x 17 x 11 in.

Estimate: \$ 600.00 - \$ 800.00



**Lot #1064: THREE LOUIS XVI-STYLE MOLDED GLASS AND SILVERED METAL TWO-LIGHT WALL APPLIQUES**

Each tiered flower-filled urn back supporting the s-scroll arms with entwined branches; 20 x 13 1/2 x 6 1/4 in.

Estimate: \$ 450.00 - \$ 750.00



**Lot #1065: GEORGE III-STYLE MARQUETRY MAHOGANY LETTER BOX**

With pierced back panel and sloping lid, the case with flower-filled urn and base drawer; 14 5/8 x 9 1/2 x 4 1/4 in.

Estimate: \$ 100.00 - \$ 200.00



**Lot #1066: GEORGE III CARVED MAHOGANY SMALL CHEST OF DRAWERS**

Containing three cock-beaded drawers with brass drop handles flanked by blind fret-carved canted corners, on ogee bracket feet, now with casters; 32 1/2 x 35 3/4 x 18 1/2 in.

Estimate: \$ 700.00 - \$ 900.00



**Lot #1067: GEORGE III INLAID SATINWOOD WORK TABLE**

The cross-banded and line-inlaid two-flap top opening to a black leather surface, above a frieze drawer and square, tapered legs; 28 1/2 x 19 x 15 3/4 in.

Estimate: \$ 1000.00 - \$ 2000.00



**Lot #1068: SET OF TWELVE GEORGE III-STYLE CARVED MAHOGANY DINING CHAIRS**

Each foliate and lattice serpentine top rail above pierced beaker splat and the serpentine-fronted upholstered seat on canted molded legs joined by h-stretcher; 37 3/4 x 24 in.

Estimate: \$ 2000.00 - \$ 3000.00



**Lot #1069: SET OF EIGHT GEORGE III-STYLE CARVED MAHOGANY DINING CHAIRS**

Each shaped top rail above three levels of spindles and rush seat on tapered legs joined by stretchers and ending in bun feet; 42 1/4 x 21 3/4 in.

Estimate: \$ 800.00 - \$ 1200.00



**Lot #1070: GOTHIC REVIVAL MAHOGANY BREAKFRONT SECRETARY BOOKCASE**

The pinnacled upper part with applied quatrefoils and enclosed by four glazed doors with lancet bars, the lower section with fitted fall-front secretaire flap flanked at either side by a deep drawer, above four doors with lancet panels, bracket feet; 9 ft. 7 in. x 8 ft. 2 in. x 18 in.

Estimate: \$ 8000.00 - \$ 12,000.00

## Lots 1071 - 1080



**Lot #1071: GEORGE III MAHOGANY KNEEHOLE DESK**

Containing an arrangement of seven drawers centering a shallow drawer and a recessed door, raised on bracket feet; 30 3/4 x 31 x 18 1/2 in.

Estimate: \$ 800.00 - \$ 1200.00



**Lot #1072: QUEEN ANNE WALNUT SIDE CHAIR**

The spoon-shape backrest with solid baluster splat and the drop-in seat on cabriole legs joined by h-stretchers and ending in pad feet; 40 3/4 x 20 12/ in..

Estimate: \$ 400.00 - \$ 700.00



**Lot #1073: QUEEN ANNE WALNUT LARGE ARMCHAIR**

With padded back and seat flanking shepherd's crook arms, the drop-in seat on cabriole legs joined by h-stretcher and ending in pad feet; 44 3/4 x 27 1/2 in.

Estimate: \$ 2000.00 - \$ 3000.00



**Lot #1074: REGENCY-STYLE MAHOGANY WRITING TABLE**

The top with reeded edge, above two cock-beaded drawers with ebonized pulls, raised on four-cluster legs ending in reeded feet and brass cup casters; 29 1/4 x 38 1/2 x 21 in.

Estimate: \$ 600.00 - \$ 800.00



**Lot #1075: QUEEN ANNE MAHOGANY SIDE TABLE**

The rectangular top above two frieze drawers with brass drop handles, on tapered legs ending in pad feet; 29 1/2 x 39 1/2 x 21 1/2 in.

Estimate: \$ 800.00 - \$ 1200.00



**Lot #1076: WILLIAM AND MARY-STYLE OAK SIDE TABLE**

The frieze drawer fitted with brass tear drop pulls, raised on bobbin-turned and block legs joined by box stretcher; 30 1/2 x 32 1/2 x 22 3/4 in.

Estimate: \$ 300.00 - \$ 500.00



**Lot #1077: QUEEN ANNE WALNUT STOOL**

The rectangular upholstered seat raised on cabriole legs with c-shape brackets and ending in pad feet; 16 1/2 x 21 1/2 x 16 in.

Estimate: \$ 800.00 - \$ 1200.00



**Lot #1078: GEORGE I BURL AND PARCEL-GILT DRESSING TABLE MIRROR**

The beveled swivel plate within leaf-tip band, the out curving four drawer base on bracket feet; 30 3/4 x 18 x 8 1/2 in.

Estimate: \$ 700.00 - \$ 900.00



**Lot #1079: REGENCY-STYLE CARVED MAHOGANY ARMORIAL ARMCHAIR**

The padded back and seat surmounted by a rearing lion eagle crested cartouche beneath a blackamoor head and the motto, "For Right," the legs ending in claw and ball feet; 42 x 23 1/2 in.

Estimate: \$ 1000.00 - \$ 1500.00



**Lot #1080: FEDERAL INLAID MAHOGANY BOW-FRONT CHEST OF DRAWERS**

The line-inlaid edge above four cock-beaded drawers with replaced thistle-repousse brass oval drop handles, on splayed bracket feet; 37 x 39 x 20 1/4 in.

Estimate: \$ 500.00 - \$ 800.00



## Lots 1081 - 1090



**Lot #1081: FEDERAL FIGURED MAPLE AND CHERRY CHEST OF DRAWERS**

Of bowed breakfront outline, containing four cock-beaded drawers fitted with repoussé brass pulls, on reeded legs; 43 x 42 1/2 x 22 3/4 in.

Estimate: \$ 500.00 - \$ 800.00



**Lot #1082: FEDERAL CHERRY CHEST OF DRAWERS**

The top with line inlaid edge above four drawers with incised borders and replaced brass drop handles, on slightly flared bracket feet; 40 x 41 1/4 x 19 1/2 in.

Estimate: \$ 400.00 - \$ 600.00



**Lot #1083: AMERICAN CHIPPENDALE-STYLE TALL CHEST OF DRAWERS**

The gadroon cornice above three short and five long drawers with brass bat's wing drop handles, raised on leaf-carved and ball and claw feet; 44 x 24 in. x 5 ft. 4 1/2 in.

Estimate: \$ 500.00 - \$ 700.00



**Lot #1084: CHIPPENDALE FLAME-MAHOGANY VENEERED SERPENTINE-FRONTED CHEST OF DRAWERS**

Containing four drawers with foliate-cast brass drop handles, flanked by blind fret canted corners, raised on bracket feet; 38 1/2 x 43 1/2 x 18 3/4 in.

Estimate: \$ 300.00 - \$ 500.00



**Lot #1085: CHIPPENDALE-STYLE CARVED MAHOGANY WING ARMCHAIR**

With serpentine top rail, shaped arms and out-scroll armrests, on cabriole legs joined by h-stretcher and ending in claw and ball feet; 45 1/2 x 29 in.

Estimate: \$ 600.00 - \$ 900.00



**Lot #1086: GEORGE III MAHOGANY GATE-LEG TABLE**

With two rectangular leaves, the frame raised on cabriole legs ending in pointed pad feet; 27 1/2 x 20 1/2 x 41 3/4 in.

Estimate: \$ 700.00 - \$ 900.00



**Lot #1087: REGENCY LINE-INLAID MAHOGANY DROP-LEAF WORK TABLE**

The leaves with rounded corners, the case containing two drawers with brass pulls, on partially ring-turned legs ending in cup casters; 28 x 14 1/2 x 20 1/2 in.  
Estimate: \$ 800.00 - \$ 1200.00



**Lot #1088: GEORGE III MAHOGANY LIBRARY ARMCHAIR**

With brass nail-headed leather back, armrests and seat, raised on canted legs joined by h-stretcher; 41 1/2 x 27 in.  
Estimate: \$ 1200.00 - \$ 1800.00



**Lot #1089: GEORGE III CARVED MAHOGANY LIBRARY ARMCHAIR**

With leather upholstered serpentine back rest, the armrests on flowerhead and acanthus supports, the seat on cabriole legs ending in leaf-capped feet; 41 1/2 x 30 in.  
Estimate: \$ 1500.00 - \$ 3000.00



**Lot #1090: VICTORIAN CARVED WALNUT RECAMIER**

The shaped tufted back resting on s-scroll lily and foliate-carved supports, the serpentine-fronted seat on hipped cabriole legs; 34 in. x 5 ft. 2 in.  
Estimate: \$ 400.00 - \$ 600.00

## Lots 1091 - 1100



### Lot #1091: ENGLISH BRASS CANDLESTICK LAMP

With segmented funnel and urn stem, cylindrical nozzle and square base; 29 3/4 in.  
Estimate: \$ 100.00 - \$ 200.00



### Lot #1091A: WILLIAM IV CARVED MAHOGANY AND TUFTED BERGERE

With buttoned back and roll-over arms carved at the front with foliage, the seat on tapered legs ending in casters; 39 1/2 x 32 in.  
Estimate: \$ 400.00 - \$ 600.00



### Lot #1092: VICTORIAN WALNUT EXTENSION DINING TABLE

The oval divided top above a plain frieze and raised on tapered legs ending in brass cup casters; 29 in. x 5 ft. x 4 ft. 6 in.  
Estimate: \$ 800.00 - \$ 1200.00



### Lot #1093: SET OF EIGHT CHIPPENDALE-STYLE CARVED MAHOGANY DINING CHAIRS

Including two armchairs, each serpentine top rail above pierced baluster-form splat and the upholstered seat on cabriole legs ending in hairy lion's paw feet; 38 x 24 in.  
Estimate: \$ 1000.00 - \$ 2000.00



### Lot #1094: VICTORIAN MAHOGANY WRITING TABLE

The molded top above two cock-beaded frieze drawers, raised on turned legs; 27 1/2 x 42 x 25 1/4 in.  
Estimate: \$ 400.00 - \$ 600.00



### Lot #1095: VICTORIAN CARVED MAHOGANY TUB-BACK CHILD'S ARMCHAIR

The arched back with molded borders continuing down to padded arms, the serpentine-fronted seat on cabriole legs; 29 x 17 in.  
Estimate: \$ 300.00 - \$ 500.00



### Lot #1095A: WILLIAM IV CARVED MAHOGANY LEATHER-UPHOLSTERED BERGERE

The shaped, deep-buttoned back above upholstered seat flanked by horizontally rolled arms, the arm supports carved with scrolls, on turned legs; 39 x 29 1/2 x 30 in.  
Estimate: \$ 800.00 - \$ 1200.00



**Lot #1096: LATE GEORGE III INLAID AND CARVED MAHOGANY ROLL-TOP DESK**

The cross-banded top above the cylinder flap opening to pigeonhole-backed pull-out slide with hinged writing panel, the case containing two drawers, raised on reeded legs; 40 3/4 x 39 3/4 x 22 in.

Estimate: \$ 800.00 - \$ 1200.00



**Lot #1097: GEORGE III MAHOGANY CHEST OF DRAWERS**

The top with applied molded edge, above four cock-beaded drawers with brass drop handles, the base on bracket feet; 37 x 37 x 21 in.

Estimate: \$ 2000.00 - \$ 2500.00



**Lot #1098: GEORGE III MAHOGANY BOW-FRONT CHEST OF DRAWERS**

Containing two short and three long cock-beaded drawers with later urn-repoussé oval brass drop handles, on bracket feet; 45 3/4 x 40 1/2 x 20 1/2 in.

Estimate: \$ 400.00 - \$ 600.00



**Lot #1099: BROWN-LEATHER UPHOLSTERED SOFA**

With roll-over armrests and square tapered feet; 33 1/2 in. x 6 ft. 4 in.

Estimate: \$ 400.00 - \$ 600.00



**Lot #1100: PAIR OF GEORGE III-STYLE CARVED MAHOGANY LIBRARY ARMCHAIRS**

Each with padded back and seat, the arms with lion's-head terminals, raised on acanthus-carved cabriole legs; 41 1/2 x 32 1/2 in..

Estimate: \$ 3000.00 - \$ 6000.00