

## Lots 101 - 110



### Lot #101: MEISSEN PORCELAIN FIGURE GROUP

Molded as an 18th c. boy in yellow pantaloons holding a grape cluster and a girl in straw hat and apron, centering a grape-filled basket, crossed swords mark; 6 1/4 x 5 1/2 in.

Estimate: \$ 600.00 - \$ 800.00



### Lot #102: TWO CONTINENTAL PORCELAIN FIGURE GROUPS

The one marked ENS with crossed lines and point modeled as the seated Pan holding grape cluster over a prone nymph, the other, Meissen-style, Leda with swan and arm around female companion; 11 x 12 1/2 in. and 11 3/4 x 13 in.

Estimate: \$ 1200.00 - \$ 1800.00



### Lot #103: PAIR OF KPM BERLIN IVORY-GLAZED PORCELAIN LARGE URNS

Each ovoid bowl with arched handles and gadroon and entrelac bands, leaf-banded lower section on separate stand, underglaze blue scepter mark, drilled for lamps; 19 3/4 in.

Estimate: \$ 2000.00 - \$ 3000.00



### Lot #104: TWO KPM BERLIN PORCELAIN PLAQUES

Impressed sword above K.P.M. G or W 237-158; the one with Apollo in his chariot with female attendants, the other with the figure of death riding alongside a prince above a prone maiden and pursuing a nymph holding a crown, in carved giltwood frames; 6 1/4 x 9 1/4 in.

Estimate: \$ 1500.00 - \$ 3000.00



### Lot #105: PAIR OF KPM BERLIN PORCELAIN ALLEGORICAL FIGURES

Modeled as semi-draped classical females personifying painting or writing, each with attributes and an attendant putto, underglaze sceptre mark and iron red KPM beneath a cross and oval; 11 7/8 and 12 1/4 in.

Estimate: \$ 1000.00 - \$ 2000.00



### Lot #106: VAN SCHIERHOLZ PORCELAIN PUTTO CENTERPIECE AND DRESDEN ECUELLE AND COVER

The circular bowl painted with floral sprigs and carried by four putti, the other, two-handled, with narrow cobalt and gilt borders and painted with garlands; 5 x 9 1/2 in. and 5 1/8 x 7 1/4 in.

Estimate: \$ 150.00 - \$ 250.00



**Lot #107: ROSENBURG ART NOUVEAU POTTERY LARGE VASE**

Underglaze black Rosenburg den Haag 572 and with anchor; decorated with a hen flanked by foliage; 22 1/2 in.  
Estimate: \$ 2000.00 - \$ 3000.00



**Lot #108: PAIR OF VIENNA PORCELAIN DIMINUTIVE URNS**

Each balloon-shaped body molded with rose-tipped scrolls, gilt highlights, blue beehive mark; 2 3/4 in.  
Estimate: \$ 150.00 - \$ 250.00



**Lot #109: TWO VIENNA PORCELAIN CUPS AND COVERS**

Each with floral clusters beneath shaped green or yellow fish scale border, one with double twist handles, and the dome cover with lemon or floral knob, beehive mark; 5 and 7 in.  
Estimate: \$ 150.00 - \$ 250.00



**Lot #110: ASSEMBLED PAIR OF VIENNA PORCELAIN CIRCULAR TUREENS AND COVERS**

Each footed bowl with floral sprigs beneath a serpentine yellow-ground fish scale border, the dome cover with lemon knob, blue beehive mark; 5 3/4 in., 8 1/4 in. diam.  
Estimate: \$ 300.00 - \$ 500.00

## Lots 111 - 120



### Lot #111: VIENNA PORCELAIN FIGURE OF A TURKEY

Underglaze blue beehive mark; colorfully plumed, modeled straddling a tiered leaf stump, with paper label, "Mrs. Joanne Fendall du Pont..."; 15 1/4 x 11 1/2 x 7 1/2 in.

Estimate: \$ 400.00 - \$ 600.00



### Lot #112: FOUR ROYAL COPENHAGEN FIGURES OF SEATED CHILDREN IN NATIONAL DRESS

"Slesvig," "Fylland" and "Faro"; three modeled with bonnets and aprons, the last a "Gronland" child, blue wave mark; 3 1/4 to 3 7/8 in.

Estimate: \$ 150.00 - \$ 250.00

### Lot #113: NO LOT

### Lot #114: HEREND PORCELAIN DINNER SERVICE IN "ITALIAN FRUIT" PATTERN

Comprising nineteen 11 1/4 in. plates, twelve 12 1/4 in. plates, eleven 9 in. plates, thirteen 8 in. plates, twelve bouillon cups, twelve saucers, ten demitasse cups, fourteen saucers, three tea cups, five leaf-form cups, twenty-two assorted saucers, eight 6 1/2 in. bowls, six 5 1/2 in. dishes, fifteen 8 1/4 in. crescent plates, five 8 in. fan plates, one 10 1/2 in. fruit bowl, two 10 in. triangular dishes, one sauceboat, one stand, one sauceboat with attached stand, four egg cups, two graduated pear-form coffee pots and covers, one spherical small teapot and cover, one covered sugar bowl, one creamer and cover, one tea caddy, one warming dish and cover, three graduated platters 15 in., 18 1/2 in., 21 in., three 14 1/2 in. circular trays; together with twenty-eight pieces of Herend porcelain in the "Rothschild Bird" pattern. Provenance: the Estate of Mary Warburg.

Estimate: \$ 1000.00 - \$ 2000.00



### Lot #115: SET OF TWELVE FRENCH HAND-PAINTED PORCELAIN TOPOGRAPHICAL PLATES

Retailed by G.B. Brevete Paris, variously showing landmarks of Paris, locations indicated in gold, within gilt-embossed cavetto and scalloped edges; 9 1/4 in. diam.

Estimate: \$ 1000.00 - \$ 2000.00





**Lot #116: PAIR OF SÈVRES-STYLE PORCELAIN BLUE CELESTE-GROUND PICTORIAL TRAYS**

With underglaze interlaced L's enclosing S with three dots or 82 above S...; the one centered by Louis XIV encircled by eight rondels of court ladies, the other Louis XVI with six court ladies; 19 1/2 and 18 3/4 in. diam.

Estimate: \$ 1200.00 - \$ 1800.00



**Lot #117: FRENCH GILT-METAL MOUNTED SÈVRES-STYLE OBLONG BOX AND A THREE-HANDELED CUP**

The box with pseudo, "Chateau d'Anet" mark, of oblong serpentine outline with gilt-enclosed figure and landscape reserves on cobalt ground, the cup with scene of couples fishing and with scrollwork rim, handles and stemmed base; 2 5/8 and 7 in.

Estimate: \$ 500.00 - \$ 700.00



**Lot #118: GILT-METAL MOUNTED SÈVRES-STYLE PORCELAIN TOPOGRAPHICAL BOX AND AN ENAMELED GILT-METAL BOX**

The one marked in underglaze red, "Mre. Imple. de Sevres," with, "Vue de la Bastille" on lid and four other views around case, the other with 18th c. scene of three figures in garden, on violet engine engraved ground; 2 1/2 x 5 1/2 in. and 1/2 x 3 3/4 in.

Estimate: \$ 300.00 - \$ 600.00



**Lot #119: LOUIS XVI-STYLE GILT-METAL MOUNTED SÈVRES-STYLE BISCUIT PORCELAIN BUST OF MARIE ANTOINETTE**

The head turned to right with floral-entwined coif and wearing ermine-bordered and tasseled cloak, the stand with tasseled floral garlands, impressed interlaced L's enclosing B; 34 1/2 x 18 1/2 in.

Estimate: \$ 2500.00 - \$ 5000.00



**Lot #120: PAIR OF 18TH CENTURY-STYLE PORCELAIN FIGURES AND A PARIS PORCELAIN FIGURE**

Modeled as a youth seated in a chaise with right leg resting on left knee, and a seated lady, on floral-painted scrollwork bases; together with a Paris figure of a barefoot boy; 7 1/4 and 7 1/2 in., 8 1/4 in. diam.

Estimate: \$ 250.00 - \$ 350.00

## Lots 121 - 130



**Lot #121: PAIR OF CONTINENTAL PORCELAIN FIGURES OF CONTINENTS MOUNTED ON LOUIS XV-STYLE GILT-METAL THREE-LIGHT CANDELABRA STANDS**

The one "Ameriqua" modeled with feathered skirt and bow, with foot on alligator, the other, "Asie" a girl holding a torch backed by a camel, the pierced foliate cast bases with s-scroll arms; 15 3/4 x 12 in.

Estimate: \$ 1500.00 - \$ 3000.00



**Lot #122: PAIR OF JACOB PETIT PARIS PORCELAIN CORNUCOPIA VASES**

Each with underglaze blue mark "J.P."; each turquoise-ground bowl with two bird and flower reserves and scroll terminals, the base with swan's neck bracket feet; 11 1/2 x 10 in.

Estimate: \$ 800.00 - \$ 1200.00



**Lot #123: TWO JACOB PETIT-STYLE PORCELAIN FIGURES OF NEAR EASTERN MAIDENS**

The one a two-part pot modeled with arms across bust on a gilt-tasseled green pillow, the other seated on a stump with raised arm; 14 1/2 and 13 7/8 in.

Estimate: \$ 400.00 - \$ 800.00

**Lot #124: NO LOT**

**Lot #125: NO LOT**



**Lot #126: PARIS PORCELAIN LARGE PICTORIAL VASE**

The ovoid bowl with swan's head handles centering a classical Roman scene and a garden view on reverse, engraved with leaf and floral stem bands, square base; 19 1/2 x 10 1/2 in.

Estimate: \$ 800.00 - \$ 1200.00



**Lot #127: PAIR OF PARIS PORCELAIN GILT AND POLYCHROME DECORATED VASES**

Each amphora-shaped body painted with landscape with classical figures in rectangular reserve enclosed by laurel leaf borders, the reserve decorated with upper band of trophy of arms and floral festoon and lower band of laurel leaves and berries, on plinth base; 16 3/4 in., 8 1/4 in. diam.

Estimate: \$ 800.00 - \$ 1200.00

**Lot #128: NO LOT**

**Lot #129: NO LOT**



**Lot #130: PAIR OF MAJOLICA FIGURES OF TURKEYS**

Each impressed, "1625," the one with two pinecones within oval; modeled as a male and female each with raised head and open beak; 15 3/4 x 16 1/4 in. and 16 1/2 x 18 1/2 in.

Estimate: \$ 1200.00 - \$ 1800.00

[Back](#)

[Back to Index](#)

[Next](#)

## Lots 131 - 140



### Lot #131: MAJOLICA SHELL-FORM CENTERPIECE ON FIGURAL STAND

Impressed, "855"; modeled as addorsed mermaids centered by a tiered palm tree, above wave and dolphin heads, supporting the tiered oblong shell bowl; 27 3/4 x 23 x 14 in.

Estimate: \$ 1200.00 - \$ 1800.00



### Lot #132: CONTINENTAL MAJOLICA CENTERPIECE

Impressed monogram, a crescent enclosing, "& Sons" and "E" and "6"; modeled as a boy supporting a shell and sitting on a dolphin flanked by mauve-ground on turquoise shells, on shellwork foot; 15 1/4 x 14 in.

Estimate: \$ 800.00 - \$ 1200.00



### Lot #133: CONTINENTAL MAJOLICA JARDINIÈRE

Of oblong quatrefoil cross section and with mauve-glazed interior, the turquoise-ground swelling exterior relief molded with tritons, cherubs, mermaids and dolphins, green wave base; 8 1/8 x 24 x 13 in.

Estimate: \$ 1000.00 - \$ 2000.00



### Lot #134: SARREGUEMINES MAJOLICA WALL BRACKET

Impressed factory mark and "767p"; the blue-glazed scallop-fronted shelf above a satyr head within scrolls; 17 3/8 x 13 1/2 in.

Estimate: \$ 800.00 - \$ 1200.00



### Lot #135: PAIR OF PAINTED POTTERY FIGURES OF FELINES

Bearing monogram and date, "A.P. 95," each modeled seated, with green eyes, striped fur and gilt chain, on marbelized drum base; 10 1/4 in.

Estimate: \$ 100.00 - \$ 200.00



### Lot #136: PAIR OF LUNEVILLE CIRCULAR TUREENS AND COVERS AND THREE OTHER FRENCH FAIENCE ARTICLES

The pair of tureens and the single oblong quatrefoil tureen and covers with apple knobs, together with a cachepot and a two-handled urn; 6 3/4 to 8 1/2 in. x 6 1/2 to 14 1/2 in.

Estimate: \$ 500.00 - \$ 800.00



**Lot #137: TWO MAJOLICA CRACKER JARS AND COVERS  
AND A SHELL-FORM CENTERPIECE**

The first a square "wood" box impressed, "Delatire" by Brown, Westhead, Moore & Co., with vegetable lid, the second Palliseyware of tree stump form with serpent handle and frog and mushroom lid, the centerpiece raised on tripod dolphin supports on concave-sided base; 6 3/4 to 7 in. x 6 1/2 to 9 1/2 in.

Estimate: \$ 500.00 - \$ 800.00

**Lot #138: NO LOT**



**Lot #139: PALLISEYWARE MAJOLICA JUG AND STAND**

The textured pear-form bowl with entwined snake-form handle, the cover with snail knob and the stand with two butterflies and two caterpillars; 9 in., 6 3/4 in. diam.

Estimate: \$ 500.00 - \$ 750.00



**Lot #140: PORTUGUESE PALLISEYWARE MAJOLICA  
PLATE**

Impressed, "Jose A. Cunha...", the textured ground modeled with a snake battling a lizard, and with a moth, crab and larvae; 9 3/4 in. diam.

Estimate: \$ 500.00 - \$ 700.00



## Lots 141 - 150



**Lot #141: FRENCH FAIENCE SERPENTINE-FRONTED  
COMMODO-FORM BOX AND COVER**

The removable lid painted with garden trophy within pink borders, the bombé turquoise-ground case with central shell tip and lattice-enclosed medallion, on cabriole legs joined by stretcher; 5 1/4 x 7 7/8 in.

Estimate: \$ 300.00 - \$ 400.00



**Lot #142: FRENCH FAIENCE ARMORIAL INKSTAND OF  
COMMODO FORM**

The serpentine-fronted top above molded shell dish and candlestick and two removable lidded wells, the front with two real and two false drawers, centering the husk-enclosed armorials; 7 3/4 x 8 in.

Estimate: \$ 350.00 - \$ 450.00



**Lot #143: THREE FAIENCE TABLE ARTICLES**

Comprising a two-handled jardinière with two scenic reserves, the figure of a brown cow painted with flowers and a lidded box, "Lait D' Amandies"; 2 1/4 to 4 1/2 x 2 1/2 to 10 1/4 in.

Estimate: \$ 150.00 - \$ 250.00



**Lot #144: CONTINENTAL POTTERY CHINOISERIE  
FIGURE OF A MAN**

Modeled wearing a belted robe and holding a pomegranate, the head gazing downwards, on a mahogany pedestal with chamfered corners and fielded panels; 4 ft. 1 3/4 in. x 20 1/2 in., with stand 6 ft. 1 3/4 in. x 22 1/2 in.

Estimate: \$ 1500.00 - \$ 3000.00

## *Chinese Export Porcelain from the Private Collection of Elinor Gordon*

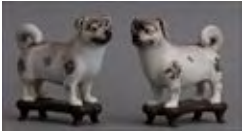
### Lots 145 - 169



**Lot #145: JAPANESE WHITE-GLAZED PORCELAIN  
FIGURE OF A SEATED DOG**

Modeled with head turned to side; 5 7/8 x 7 in.

Estimate: \$ 600.00 - \$ 800.00



**Lot #146: PAIR OF CHINESE EXPORT PORCELAIN FIGURES OF DOGS**

Each standing four square, with shaded black/gray spots, hardwood stands; 5 3/4 x 8 1/8 in.  
Estimate: \$ 1000.00 - \$ 1500.00



**Lot #147: TWO JAPANESE FIGURES OF A CHICKEN AND A ROOSTER AND A CHINESE EXPORT FIGURE OF A ROOSTER**

Each enameled with colorful plumage, the famille rose piece on pierced rockwork; 3 5/8 to 6 1/4 in. x 5 3/8 to 6 in.  
Estimate: \$ 1000.00 - \$ 1500.00



**Lot #148: CHINESE FAMILLE ROSE PORCELAIN FIGURE OF A PEACOCK**

Modeled with displayed tail plumage flanked by blossoming branch, on naturalistic ground; 6 1/4 x 4 3/4 in.  
Estimate: \$ 1500.00 - \$ 3000.00



**Lot #149: PAIR OF CHINESE EXPORT UNDERGLAZE-BLUE BOWLS AND STANDS**

Each fluted footed bowl with wavy rim and gilt flowerheads and scrolls; 2 3/4 in., 3 7/8 and 5 1/8 in.  
Estimate: \$ 100.00 - \$ 200.00



**Lot #149A: THREE CHINESE BLUE-GROUND SLIP-DECORATED GARDEN SEATS**

Each painted with plants, birds and insects; largest 18 in.  
Estimate: \$ 1000.00 - \$ 2000.00



**Lot #150: PAIR OF CHINESE EXPORT FAMILLE ROSE CUPS AND SAUCERS**

Each tapered bowl with three floral reserves on puce cell ground, within turquoise borders; 1 3/8 in., 2 5/8 and 4 1/4 in. diam.  
Estimate: \$ 1500.00 - \$ 2500.00



**Lot #150A: CHINESE EXPORT IMARI DEEP PUNCH BOWL**

With floral cartouches, medallions and peony scroll band; 12 in. diam.  
Estimate: \$ 250.00 - \$ 450.00

## Lots 151 - 160



### **Lot #151: THREE CHINESE EXPORT FAMILLE ROSE PLATES**

Comprising a reticulated plate with flowers, in the Meissen manner, another with full spray of flowers within apple green and white chevron border and the last with small spray and waved rim; 9 1/4 to 9 3/4 in.

Estimate: \$ 500.00 - \$ 700.00



### **Lot #152: CHINESE EXPORT SAUCER DISH AND SUGAR BOWL FROM THE MEHITABLE ADAMS SERVICE**

Each with conjoined hearts flanked by script initials M A; within gold star-banded narrow blue rim borders; diam. of saucer dish 8 in.

Estimate: \$ 800.00 - \$ 1200.00



### **Lot #153: PAIR OF CHINESE EXPORT FOOTED BOWLS MADE FOR CZ WAHLIN**

Each inscribed with name twice in grisaille, on a starry field, iron red fret inner rim border; diam. 5 1/2 in.

Estimate: \$ 400.00 - \$ 600.00



### **Lot #154: SIX CHINESE EXPORT FAMILLE ROSE TEA ARTICLES**

Each with rondel of Hope leaning on an anchor and gazing at ships in a bay; comprising a covered sugar bowl, tea caddy, helmet-form cream jug, a tea bowl and stand and a coffee cup; 1 1/8 to 5 3/8 in.

Estimate: \$ 1500.00 - \$ 3000.00



### **Lot #155: TWO CHINESE EXPORT SEPIA "FITZHUGH" BANDED COFFEE CUPS AND FOUR STANDS**

Each painted in sepia with a river view; 2 3/4 in., 2 1/2 and 5 3/4 in.

Estimate: \$ 700.00 - \$ 900.00



### **Lot #155A: CHINESE EXPORT OVAL SOUP TUREEN, COVER AND STAND**

Each piece painted with floral sprays and fruit; width of stand 15 3/4 in.

Estimate: \$ 1500.00 - \$ 3000.00



### **Lot #156: CHINESE EXPORT PORCELAIN ARMORIAL CHARGER WITH ARMS OF WOODWARD**

The green shield with three gilt fish within plumed knight's head and gilt scrollwork, iron red ground cell cavetto and ribbon-tied book and floral border; 2 in., 13 1/4 in. diam.

Estimate: \$ 1500.00 - \$ 2500.00



**Lot #157: FIVE CHINESE EXPORT ARMORIAL ARTICLES**

Comprising a bowl, coffee cup and saucer with arms of Goodall, a plate with Tracy quartering Baldington and Keck, impaling Arkyns and a bowl with Hanbury and Comyn in pretence; plate 8 3/4 in. diam.

Estimate: \$ 800.00 - \$ 1200.00



**Lot #158: CHINESE EXPORT PORCELAIN ARMORIAL CHARGER WITH ARMS OF BAKER**

The gilt shield with black running hound, within scrollwork topped by a bird/reptile, gilt scroll cavetto and sword tip border; 2 in., 15 in. diam.

Estimate: \$ 1000.00 - \$ 2000.00



**Lot #159: LARGE CHINESE EXPORT ARMORIAL SAUCER DISH WITH THE ARMS OF PIGOTT**

The three black diamond cartouche within scrollwork surround and lion head, gilt lattice border; 2 in., 13 in. diam.

Estimate: \$ 1000.00 - \$ 2000.00



**Lot #160: PAIR OF CHINESE EXPORT ARMORIAL PLATES WITH THE ARMS OF HANKEY QUARTERING BARNARD AND IMPALING WYVER**

The three-part shield with horizontal stripes and rearing lions, garlanded surround beneath lion head, gilt cavetto and border; 9 1/2 in.

Estimate: \$ 600.00 - \$ 800.00

## Lots 161 - 170



### **Lot #161: THREE CHINESE EXPORT ARMORIAL PLATES**

Comprising a small plate with arms of Heron impaling Lindsay and Abernathy, another with arms of Gorham and the last with arms of Annesley, Earl Annesley; 7 3/4 to 9 3/4 in.

Estimate: \$ 600.00 - \$ 800.00



### **Lot #162: CHINESE EXPORT ARMORIAL PLATE FOR THE DUTCH MARKET WITH THE ARMS OF CHARLÉ**

With shield and quarter oval beneath grisaille head and green foliage, blind banner, gilt chrysanthemum and gray branch border; 9 in.

Estimate: \$ 700.00 - \$ 900.00



### **Lot #163: CHINESE EXPORT ARMORIAL LARGE PLATTER WITH THE ARMS OF VAN TETS AND HARTINGH AND THE CYPHERS "VT" AND "H"**

With elaborate double cartouche with two crowned helmets and scrollwork, flanked by rearing lions, the border with cypher and two gilt figure reserves; 16 1/4 in.

Estimate: \$ 2000.00 - \$ 3000.00



### **Lot #164: CHINESE EXPORT "CRUCIFIXION" PLATE**

Executed in grisaille, the soldiers with gilt helmets, grape vine border; 8 7/8 in.

Estimate: \$ 800.00 - \$ 1200.00



### **Lot #165: CHINESE EXPORT "RESURRECTION" PLATE**

Rendered in grisaille, with gilt highlights, the border with fish scale panels, scrolls and cornucopia; 8 7/8 in.

Estimate: \$ 800.00 - \$ 1200.00



### **Lot #166: PAIR OF CHINESE EXPORT FAMILLE ROSE "JUDGEMENT OF PARIS" PLATES**

The border with gilt flowers and serpentine vines; 11 in.

Estimate: \$ 250.00 - \$ 450.00



**Lot #167: ASSORTED CHINESE EXPORT PORCELAIN TEAWARES IN THE MEISSEN STYLE**

Comprising a covered teapot, a covered tea caddy, a cream jug and three tea bowls and saucers, each with a European view of merchants and houses along river's edge; 1 1/8 to 5 1/2 in.

Estimate: \$ 1000.00 - \$ 2000.00



**Lot #168: CHINESE EXPORT TEABOWL AND SAUCER**

Each with view of hut on an island, bridge and mountains in back; 1 7/8 in., 3 1/2 and 5 3/4 in.

Estimate: \$ 200.00 - \$ 400.00



**Lot #169: CHINESE EXPORT "URNE MYSTERIEUSE" PLATTER**

The sepia hatched urn flanked by a weeping willow, within grisaille ring, blue dotted and gilt cavetto and florette border; 16 in.

Estimate: \$ 1000.00 - \$ 1500.00

## *End of the Elinor Gordon Private Collection*



**Lot #170: AGATEWARE POTTERY TEAPOT ON STAND**

The tapered bowl with swan's neck spout and raised handle, the cover with acorn knob, the stand with beaded bands; 9 x 9 1/2 in.

Estimate: \$ 300.00 - \$ 500.00

## Lots 171 - 180



**Lot #171: CHELSEA-TYPE PORCELAIN FIGURE OF AN 18TH-CENTURY GIRL COLLECTING FRUIT AND FOUR CHELSEA-TYPE PUTTI WITH GOATS**

The one barefoot with grape vines in her hair and carrying fruit-filled basket, the putti carrying fruit or a cudgel, gold anchor marks; 3 to 6 7/8 in.

Estimate: \$ 150.00 - \$ 250.00



**Lot #172: SIX CHELSEA PORCELAIN TABLE ARTICLES**

With relief-molded blossoms and painted flowers and insect decoration; comprising three 9 1/4 in. plates, two 9 1/2 in. octagonal soup plates and a 13 1/4 in. platter. Provenance: Some pieces Klaber & Klaber.

Estimate: \$ 1800.00 - \$ 2600.00



**Lot #173: EIGHT ENGLISH PORCELAIN TABLE ARTICLES**

Comprising a pair of Chelsea brown anchor mark 8 1/4 in. fruit plates, pair of Chelsea 8 1/2 in. leaf-form plates, a pair of 7 5/8 in. lobed plates with rose branch and insect, a smaller plate and a flower-encrusted cup. Provenance: Some pieces D.M. & P. Manheim, NY. Provenance: the Estate of Mary Warburg.

Estimate: \$ 400.00 - \$ 600.00



**Lot #174: FOUR DERBY PORCELAIN FRUIT PLATES AND TWO OBLONG OCTAGONAL BOWLS**

With underglaze amber anchor mark; variously with fruit, butterflies and other insects; 8 1/2 and 9 in.

Estimate: \$ 1400.00 - \$ 3000.00



**Lot #175: DERBY BISCUIT PORCELAIN MUSICAL GROUP**

Impressed factory marks; modeled as a classical maiden with flute flanked by two putti, violin, horn and tambourine; 10 1/4 x 6 1/4 in.

Estimate: \$ 250.00 - \$ 500.00



**Lot #176: PAIR OF DERBY-TYPE PORCELAIN TOPOGRAPHICAL URNS: "VIEW OF BIRMINGHAM" AND "NEAR BIRMINGHAM"**

With iron red crowned curule mark; each campagna-form cobalt-ground bowl with gilt serpent loop handles; 8 3/4 x 7 in.

Estimate: \$ 700.00 - \$ 900.00

**Lot #177: PAIR OF DERBY PORCELAIN LOZENGE-SHAPED PLATES AND A PAIR OF CHAMBERLAINS WORCESTER CAKE PLATES**



The first with cucumbers, cherries and fruit, the second with concave sides and floral clusters; 11 and 9 1/2 in. Provenance: the Estate of Mary Warburg.  
Estimate: \$ 200.00 - \$ 400.00

**Lot #178: WORCESTER PORCELAIN SCENIC TEAPOT AND COVER AND HEXAGONAL STAND IN THE "LORD HENRY THYNNE" PATTERN**



The reeded bowl with two scenic oval reserves, double scroll handle and upraised spout, the cover with floral knob, the stand with scenic rondel; 5 1/8 x 5 7/8 in.  
Estimate: \$ 700.00 - \$ 1000.00



**Lot #179: DERBY-TYPE PORCELAIN VASE, MOUNTED AS A LAMP**

The ovoid bowl with floral blooms, beneath cylindrical neck with gilt rope twist swags and handles, on giltwood stand; 27 in.  
Estimate: \$ 300.00 - \$ 600.00



**Lot #180: WORCESTER PORCELAIN LOZENGE SHAPE CAKE PLATE**

Painted with melon, butterfly, beetle and a lady bug, with x trellis and dot border; 11 in. Provenance: Klaber & Klaber.  
Estimate: \$ 1000.00 - \$ 1500.00



## Lots 181 - 190



**Lot #181: WEDGWOOD BLACK BASALT BUST OF SIR WALTER SCOTT**

Impressed "Scott" and "E.W. Wyon," the head gazing left with tartan scarf over shoulders; 14 x 9 1/2 in.  
Estimate: \$ 800.00 - \$ 1200.00



**Lot #182: STAFFORDSHIRE PEARLWARE OVAL PLAQUE**

Relief molded with a two-horse drawn chariot with putto holding a Janus head, another seated holding grape vines accompanied by a satyr carrying wine jug; 10 x 8 3/4 in.  
Estimate: \$ 500.00 - \$ 750.00



**Lot #183: TWO VICTORIAN CREAMWARE FOX-HEAD STIRRUP CUPS**

Each with gilt-banded collar; 4 3/8 and 5 1/8 in.  
Estimate: \$ 600.00 - \$ 800.00



**Lot #184: TWO SIMILAR VICTORIAN CREAMWARE FOX-HEAD STIRRUP CUPS**

Realistically rendered, the one with eyes gazing upwards, the other forward; 3 5/8 in.  
Estimate: \$ 600.00 - \$ 800.00



**Lot #185: VICTORIAN CREAMWARE LARGE FOX HEAD STIRRUP CUP**

Modeled facing forward, with bared teeth; 5 3/8 in.  
Estimate: \$ 300.00 - \$ 500.00



**Lot #186: TWO ENGLISH PORCELAIN LILY-OF-THE-VALLEY VASES, A TULIP VASE AND A MEISSEN CUP AND SAUCER**

The two with gilt-rimmed scroll bases, the tulip and leaves rising from a "grasswork" ground and the yellow-ground set with applied pink morning glory vines; 2 to 6 1/4 in. Provenance: The two vases D.M. & P. Manheim, NY.  
Estimate: \$ 400.00 - \$ 800.00



**Lot #187: PAIR OF ENGLISH PORCELAIN BOTANICAL RONDELS**

With flower encircling a vase or a ewer on marble top, velvet mat and giltwood frame; 6 3/4 x 6 3/4 in. (frame).  
Estimate: \$ 300.00 - \$ 600.00



**Lot #188: ENGLISH PAINTED PORCELAIN BOTANICAL PLAQUE**

Showing a flower-filled urn on marble table top, giltwood frame, crack at upper and lower left corners; 15 x 13 in. (frame).  
Provenance: Arthur Ackerman & Son, Inc., NY.  
Estimate: \$ 800.00 - \$ 1200.00



**Lot #189: ENGLISH PORCELAIN BOTANICAL PLAQUE**  
The horizontal panel with a band of flower and fruit, silk mat and giltwood frame; 8 3/4 x 16 1/2 in. (frame). Provenance: Arthur Ackerman & Son, Inc., NY.  
Estimate: \$ 300.00 - \$ 600.00



**Lot #190: PAIR OF ENGLISH PORCELAIN TOPOGRAPHICAL TRAYS, "FONTHILL ABBEY, WILTS." AND "RURAL REPOSE," AFTER F. WHEATLEY**

The one with abbey by water's edge viewed from broad lawn, reglued, the others with figures and a spaniel beneath a tree, gilt-highlighted shaped gallery, tilted on reverse; 1 3/8 x 9 5/8 x 7 in.  
Estimate: \$ 700.00 - \$ 900.00

## Lots 191 - 200



**Lot #191: COALBROOKDALE-TYPE PORCELAIN FLORAL-ENCRUSTED BASKET**

The fluted shell basket with arch handle and filled with colorful spray of flowers; 6 3/8 x 8 1/4 in.

Estimate: \$ 250.00 - \$ 350.00



**Lot #192: ENGLISH PORCELAIN FLORAL-ENCRUSTED TWO-HANDLED CUP AND COVER**

With bifurcated branch handles, painted and applied with colorful flowers, on quadruple feet, the cover with tiered floral knob; 4 1/2 x 5 1/2 in.

Estimate: \$ 250.00 - \$ 350.00



**Lot #193: TWO COALBROOKDALE-TYPE PORCELAIN FLORAL-ENCRUSTED INKSTANDS**

Each leafy stand with two lidded wells, and loop handle, each reglued; 3 7/8 and 4 in. x 9 1/2 in. each.

Estimate: \$ 500.00 - \$ 800.00



**Lot #194: ENGLISH PORCELAIN DESSERT SERVICE IN A "JAPAN" PATTERN**

Two pieces with underglaze "A" mark; comprising ten 7 1/2 in. square plates with notched corners, two 9 1/4 in. shell plates, two 10 7/8 in. oval plates, two 8 1/1 in. octagonal plates and a 10 1/2 in. angular scalloped fruit bowl on scroll feet.

Estimate: \$ 2000.00 - \$ 4000.00



**Lot #195: ENGLISH MOCHAWARE BARREL-FORM MILK JUG**

With eight seaweed sprigs on mocha ground within blue and brown bands; 7 1/2 x 8 1/2 in.

Estimate: \$ 400.00 - \$ 600.00



**Lot #196: ENGLISH TRANSFER-PRINTED AND POLYCHROMED IRONSTONE PART DINNER SERVICE**

Decorated in iron red and black with chinoiserie vignettes; comprising seven 10 1/2 in. plates, two 10 1/4 in. soup plates, two sauce tureens and covers, a square and a rectangular vegetable dish and cover and stack of six chamfered rectangular platters; 12 to 20 1/2 in.

Estimate: \$ 500.00 - \$ 1000.00



**Lot #197: ENGLISH TRANSFER-PRINTED POTTERY  
PUNCH BOWL**

The interior and exterior with chinoiserie figural vignette on iron red-ground with enameled highlights, restored; 7 3/4 in., 15 3/4 in. diam.

Estimate: \$ 200.00 - \$ 400.00



**Lot #198: MINTON MAJOLICA SHELL-FORM SALT**

The upright spiral shell on coral supports and encircled by three turquoise-glazed shell dishes, the cobalt ring base and reeded cushion feet, impressed NI monogram over Minton, 111 & A; 7 1/8 x 5 3/4 in. Provenance: From the Estate of Mrs. Roland Livingston Redmond.

Estimate: \$ 400.00 - \$ 800.00



**Lot #199: MINTON MAJOLICA TWO-HANDLED GAME  
TUREEN AND COVER AND A WEDGWOOD MAJOLICA  
VEGETABLE TUREEN**

Impressed "Minton, 668/12 A" and oval within a circle, and Wedgwood "8T Q"; the one with green oak leaves over basketweave bowl and rabbit and duck cover, the other with band of grape clusters and cauliflower knob, the removable liner; 7 1/4 x 14 1/2 in. and 5 1/4 x 9 1/4 in.

Estimate: \$ 500.00 - \$ 800.00



**Lot #200: COPELAND MAJOLICA FIGURAL  
CENTERPIECE**

Modeled as two putti supporting a net above fish centering logs on oblong quatrefoil base, impressed Copeland over MC; 9 3/4 x 13 1/2 in. Provenance: From the Estate of Mrs. Roland Livingston Redmond.

Estimate: \$ 400.00 - \$ 800.00