

Lots 1101 - 1110

Lot #1101: EXTENSIVE HEREND PORCELAIN PART DINNER SERVICE IN THE "ROTHSCHILD BIRD" PATTERN

Comprising nineteen 10 3/4 in. plates, twenty-one 9 1/2 in. soup plates, nineteen 10 in. deep plates, four 8 3/4 in. plates, twenty-one 7 1/2 in. bread and butter plates, twenty-one bouillon cups, eighteen stands, sixteen tea cups, fifteen stands, sixteen other stands, six pot de cremes and covers with bird knobs, one galleried cup holder, two coffee pots and covers with bird and yellow rose knob, two teapots and covers with pink or yellow rose knob, three-piece creamer, sugar bowl and tray set, two gravy boats and covers with attached stands, two two-handled tureens and covers with rose or branch handle, two two-handled wine coolers (one broken), one tureen stand eight green branch handle, one 12 in. circular salad bowl, one 10 in. square bowl with notched corners, one 10 in. oval vegetable dish, one 12 1/2 in. two-handled bread tray, two 13 1/4 in. oval platters, one quatrefoil dish with bird handle, 14 1/4 in. dish on gilt lion feet and two 3 1/2 in. oval individual ash trays (201 pieces).

Estimate: \$ 3000.00 - \$ 5000.00



Lot #1102: ELEVEN ROYAL CROWN DERBY MONOGRAMMED PORCELAIN DESSERT PLATES AND THREE PARIS PORCELAIN PLATTERS

Each border with three pheasant and two flower reserves centering the floral monogram, "H"; each pink-bordered platter centering an eagle-crested armorial; 8 7/8 diam. of plates, platters 13 1/4 to 19 1/2 in.

Estimate: \$ 800.00 - \$ 1000.00



Lot #1103: VICTORIAN PORCELAIN THIRTY PIECE DESSERT SERVICE

With scalloped gilt edges and gray borders, centering colorful floral clusters; comprising twenty-two 8 3/4 in. plates; two 11 1/2 in. angular and two oblong footed plates and two 9 1/2 in. footed plates; together with a pair of 10 1/4 in. soup plates.

Estimate: \$ 800.00 - \$ 1200.00



Lot #1104: VICTORIAN PORCELAIN BOTANICAL DESSERT SERVICE

Retailed by J.O. Donnell, Liverpool, with gilt edges, loop rims and pink borders, centering floral stems; comprising twelve 9 in. plates, two 10 in. and one 12 in. footed plates; together with a single plate (16 pieces).

Estimate: \$ 500.00 - \$ 800.00



Lot #1105: MEISSEN PORCELAIN TEA AND COFFEE SERVICE

Comprising a pear-form coffee pot, eight demitasse cups and eight saucers, a spherical teapot, six tea cups and five saucers, covered sugar bowl, a creamer, six 7 3/8 in. plates, two butter pats, a 12 3/4 in. circular tray and an 8 in. square reticulated tray (41 pieces).

Estimate: \$ 1300.00 - \$ 1700.00



Lot #1106: RENAISSANCE REVIVAL CARVED MAHOGANY ARMCHAIR

With padded spoon-shape back, the armrests with lion-head terminals, raised on tapered legs ending in brass cup casters; 38 1/2 x 28 in.

Estimate: \$ 300.00 - \$ 600.00





Lot #1107: CAULDON PINK TRANSFER-PRINTED POTTERY BASIN, IN THE "CARTOUCHE" PATTERN

B.W.M. & Co.; with floral clusters and garlands; 5 in., 15 in. diam.
Estimate: \$ 80.00 - \$ 120.00



Lot #1108: MACHINE WOVEN SILK PANEL

The two vertical strips worked with flower and fruit-filled compotes, within rococo scrollwork, later applied border; 4 ft. 5 in. x 41 in.
Estimate: \$ 250.00 - \$ 350.00



Lot #1109: TWO SIMILAR BLOWN AMETHYST GLASS VASES

Each ovoid ribbed bowl with everted cinquefoil rim; 5 and 5 1/4 in.
Estimate: \$ 50.00 - \$ 100.00



Lot #1110: TURKISH GLAZED POTTERY STEMMED BOWL

With four quatrefoil floral rondels within yellow-dot surrounds; 4 3/4 in., 6 1/4 in. diam.
Estimate: \$ 100.00 - \$ 200.00

Lots 1111 - 1120



Lot #1111: NEAR EASTERN TURQUOISE-GLAZED POTTERY FOOTED DISH

The everted scalloped rim with sawtooth band; 2 in., 5 1/4 in. diam.

Estimate: \$ 75.00 - \$ 125.00



Lot #1111A: BLUE-GLAZED ART POTTERY EWER

Impressed M C Thun centering a daisy stem, with ivory flowerheads and vinework; 7 1/2 in.

Estimate: \$ 150.00 - \$ 250.00



Lot #1112: HUNGARIAN "JAPONAISE" PORCELAIN FOOTED BOWL

Underglaze blue mark Fischer Budapest; the squat pear-form bowl pierced with honeycomb and cell panels, molded with mask headed rings and gilt feline headed feet.

Estimate: \$ 100.00 - \$ 200.00



Lot #1113: JUGTOWN WARE TURQUOISE-GLAZED POTTERY FOOTED BOWL

Impressed mark, with pitted surface; 2 1/8 in., 4 1/2 in. diam.

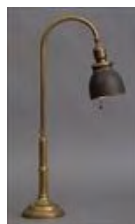
Estimate: \$ 100.00 - \$ 200.00



Lot #1114: VICTORIAN-STYLE TUFTED SETTEE

With overhang top rail and arms, the seat on turned legs ending in brass thimble casters; 34 in. x 6 ft. 4 in. x 36 in.

Estimate: \$ 500.00 - \$ 700.00



Lot #1115: ARTS AND CRAFTS BRASS DESK LAMP

The spindle arched stem with textured black-over-mercury glass shade, domed weighted base; 22 1/2 in.

Estimate: \$ 100.00 - \$ 200.00



Lot #1116: TWO AFRICAN CARVED AND PAINTED WOOD ANIMAL HEAD MASKS

The one with horns and open mouth with pointed teeth, the other with rounded pate (lacking horns) and elongated nose; 21 1/2 and 28 1/2 in.

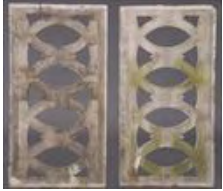
Estimate: \$ 800.00 - \$ 1200.00



Lot #1117: CYCLADIC-STYLE COMPOSITION FIGURE OF A FEMALE NUDE

The flattened figure with hands over stomach, integral base; 12 1/4 in.

Estimate: \$ 100.00 - \$ 200.00



Lot #1118: PAIR OF CARVED MARBLE FENCE PANELS

Each pierced and carved with interlaced circles with hatched bands; 28 1/2 x 4 ft. 6 1/2 in.

Estimate: \$ 700.00 - \$ 900.00



Lot #1119: 20TH CENTURY POTTERY FEMALE-HEAD VESSEL

Modeled with ivy vine entwined chignon, beneath a waved handle, green-glazed interior.

Estimate: \$ 200.00 - \$ 300.00



Lot #1120: WIRE OVERLAID RUBY GLASS LANTERN

The eight-lobed pear-form tiered bowl with domed lid and ceiling chain; 26 1/2 x 12 1/2 in.

Estimate: \$ 300.00 - \$ 500.00

Lots 1121 - 1130



Lot #1121: TWO PAIRS OF THROW PILLOWS AND A SINGLE

Comprising two rose-ground tapestries worked with a wreath, the single stitched with floral crewelwork; the largest approx. 19 x 22 in.

Estimate: \$ 700.00 - \$ 1000.00



Lot #1122: PENNSYLVANIA QUEEN ANNE WALNUT DROP-LEAF TABLE

The rectangular top with hinged leaves over ogee-arch apron, on cabriole legs terminating in trifid feet; 29 1/2 x 18 1/2 x 43 in.

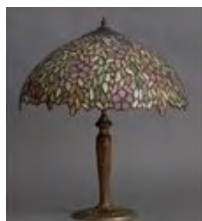
Estimate: \$ 1000.00 - \$ 2000.00



Lot #1123: CHIPPENDALE-STYLE MAHOGANY TRIPOD CANDLESTAND

The circular molded top on column and urn pedestal and cabriole legs ending in pointed feet; 24 3/4 in., 11 1/4 in. diam.

Estimate: \$ 200.00 - \$ 300.00



Lot #1124: AMERICAN LEADED GLASS LAMP SHADE ON NEOCLASSICAL-STYLE GILT-METAL BASE

Composed of pink cinquefoil blossoms, on opaque and green leaf ground, the fluted stem cast with paterae, pendant bell flowers and swags; 22 1/2 in., 18 3/4 in. diam.

Estimate: \$ 150.00 - \$ 250.00



Lot #1125: PAIR OF AMERICAN ROCOCO REVIVAL CARVED AND LAMINATED ROSEWOOD SLIPPER CHAIRS, ATTRIBUTED TO JOHN HENRY BELTER, NEW YORK

Each shaped and padded back with rosehead and foliate crest, the serpentine-fronted seat on rose-headed cabriole legs ending in scroll feet; 37 1/2 x 18 1/2 in.

Estimate: \$ 2000.00 - \$ 3000.00



Lot #1126: AMERICAN CLASSICAL MAHOGANY AND PARCEL-GILT CENTER TABLE WITH MARBLE TOP, PROBABLY NEW YORK

The veined white top above molded frieze, the flared column with gilt-metal ring and the waved base on reeded and foliate feet; 36 1/4 in., 29 3/4 in. diam.

Estimate: \$ 3000.00 - \$ 6000.00



Lot #1127: PAIR OF FEDERAL-STYLE BRASS ANDIRONS WITH SPOOL AND URN FINIALS

Each urn on block base and arched legs, ending in claw and ball feet; 22 x 13 x 19 in.

Estimate: \$ 600.00 - \$ 800.00



Lot #1128: CHIPPENDALE MAHOGANY TOP WALNUT CANDLESTAND

The rectangular fixed top, on column and urn pedestal and tripod legs, ending in pointed pad feet; 26 3/4 x 19 x 15 in.

Estimate: \$ 300.00 - \$ 600.00



Lot #1129: THREE NEW YORK CLASSICAL CARVED MAHOGANY SIDE CHAIRS, IN THE MANNER OF DUNCAN PHYFE

Each top rail with bow-tied wheat sheaves, on reeded uprights, the drop-in seat on partially carved hairy lion's legs and feet; 34 x 15 1/2 in.

Estimate: \$ 2000.00 - \$ 4000.00



Lot #1130: PAIR OF MASSACHUSETTS QUEEN ANNE CARVED MAHOGANY SIDE CHAIRS

Each yoke crest rail above solid vase-form splat, the drop in seat on shell-carved cabriole legs joined by h-stretcher and ending in paw feet; 38 x 22 in.

Estimate: \$ 1000.00 - \$ 2000.00

Lots 1131 - 1134



Lot #1131: MASSACHUSETTS FEDERAL CARVED MAHOGANY WORK TABLE

The top with notched corners, above two cock-beaded fitted drawers with brass pulls and a pleated fabric basket, the spool ringed corners on tapered reeded legs; 29 x 21 x 16 in.

Estimate: \$ 1000.00 - \$ 2000.00



Lot #1131A: MASSACHUSETTS FEDERAL MAHOGANY SOFA

The paneled crest rail with reeding over rectangular padded back above upholstered seat flanked by downswep arms over leaf-carved vase-form supports, on turned reeded legs; 33 1/2 x 78 1/8 x 30 in.

Estimate: \$ 1000.00 - \$ 2000.00



Lot #1132: CONTINENTAL SCHOOL: BEACH SCENE WITH FIGURES

Oil on board, 18 1/4 x 29 in., unsigned.

Estimate: \$ 700.00 - \$ 900.00



Lot #1133: ATTRIBUTED TO RALPH ALBERT BLAKELOCK: "INDIAN ENCAMPMENT"

Oil on canvas, 28 x 40 in., signed lower right. University of Nebraska Blakelock inventory #1256 on verso.

Estimate: \$ 1800.00 - \$ 2200.00



Lot #1134: ATTRIBUTED TO RALPH ALBERT BLAKELOCK: LANDSCAPE WITH FIGURES

Oil on panel, 3 1/4 x 6 1/4 in., unsigned. University of Nebraska Blakelock inventory #NB 1-1757-II on verso.

Estimate: \$ 1000.00 - \$ 1500.00

END OF AUCTION