

Lots 501 - 510



Lot #501: A PAIR OF HAND-COLORED ENGRAVED FIGURAL RONDELS AND A SINGLE

The pair with classical figures, contained in molded brass frames, the single with youth with horn and a cherub, mat and gilt-metal frame; 4 3/4 and 5 in.

Estimate: \$ 150.00 - \$ 250.00



Lot #502: NEOCLASSICAL-STYLE PLASTER RELIEF PANEL

Incorporating Cupid with garland on back of bull, nymphs and an altar, ebonized wood frame; 13 3/4 x 5 ft. 8 1/4 in., frame 16 3/4 in. x 5 ft. 11 1/4 in.

Estimate: \$ 400.00 - \$ 800.00



Lot #503: TWO SIMILAR EMPIRE-STYLE CARVED ALABASTER URNS, MOUNTED AS LAMPS

Each ovoid partially reeded bowl beneath sloping shoulder with serpent handles, on ebonized wood stand; 15 1/2 in., 28 1/4 in. to finials.

Estimate: \$ 400.00 - \$ 800.00



Lot #504: THREE WOVEN BASKETS

Comprising a rectangular sewing basket, a wicker cushion-form and a boat-form basket, each with arch handle; 6 to 10 1/4 in. x 7 to 16 in.

Estimate: \$ 200.00 - \$ 300.00



Lot #505: FRENCH FRAMED NAPOLEONIC COPPERIZED METAL MEDALLIONS

Variouly depicting "Seige de la Bastille," "L'Arrive du Roi...1789," "Napoleon in Battle," profiles of the Emperor, Marie-Louise and Josephine, arranged on ebonized back with gilt-metal eagles and pierced foliate border; 25 1/4 x 32 in.

Estimate: \$ 700.00 - \$ 900.00



Lot #506: PAIR OF FRENCH NEOCLASSICAL-STYLE GLASS VASES, MOUNTED AS LAMPS

Each baluster-form bowl painted with ancient figures and music and military trophies, within gilt greek fret and reeded borders; 20 in., 36 in. to finial.

Estimate: \$ 400.00 - \$ 800.00



Lot #507: SET OF FOUR FRAMED WAX INTAGLIOS

Variously depicting in relief classical figures and armorials, on ink-inscribed paper backs, contained in ebonized and parcel-gilt frames; 16 x 12 in. (frame).

Estimate: \$ 800.00 - \$ 1200.00



Lot #508: TWO FRENCH GILT-METAL MOUNTED GLASS BOXES

The one clear glass in Empire style with eagle winged griffins and seahorses, the other oval green glass with entralac borders and floral garland, cast drop handles; 3 5/8 x 8 in. and 4 1/2 x 6 1/4 in.

Estimate: \$ 400.00 - \$ 800.00



Lot #509: FAIENCE MINIATURE COMMODE A PORTES, IN THE LOUIS XV STYLE

Of serpentine outline and bombé contour, the top and the door with figure panel within gilt-metal encadrement, figural side panels, windmill mark; 9 3/8 x 8 x 4 1/2 in.

Estimate: \$ 400.00 - \$ 600.00



Lot #510: ENGLISH MAHOGANY HAND MIRROR

The oval beveled plate within narrow frame above pierced tear drop handle; 15 1/4 x 7 1/2 in.

Estimate: \$ 150.00 - \$ 250.00

Lots 511 - 520



Lot #511: PAIR OF LOUIS XVI-STYLE GILT-BRONZE MOUNTED GLASS COMPOTES AND COVERS

Each reeded bowl with petal-tip rim, on addorsed dolphin stem and base with fluted corners, the dome cover with pinecone knob, impressed "Made in France"; 13 1/4 in., 7 1/2 in. diam.

Estimate: \$ 1000.00 - \$ 2000.00



Lot #512: PAIR OF CARVED IVORY SMALL BUSTS OF APOLLO AND DIANA, AFTER THE ANTIQUE

He with filleted hair and clasped cloak over shoulders, she with crescent diadem and blouse, shaped stem and ebonized wood stand; 8 3/4 x 5 1/2 in.

Estimate: \$ 1200.00 - \$ 1800.00



Lot #513: PAIR OF EMPIRE-STYLE BRONZE AND GILT-BRONZE FOUR-LIGHT CANDELABRA

Each modeled as a classical winged maiden holding aloft the paired arms ending in leaf-tip pans and squat nozzles with removable liners, resting on an orb, cylindrical floral pattern stem and stepped base; 26 1/2 x 12 1/2 in.

Estimate: \$ 2000.00 - \$ 4000.00

Lot #514: NO LOT



Lot #515: PAIR OF EMPIRE-STYLE GILT-METAL MOUNTED MALACHITE PEDESTALS

Each square top on Egyptian female-headed angular tapered stem and tiered petal tip and anthemion-banded base and bracket feet; 42 x 11 1/4 x 11 1/4 in.

Estimate: \$ 1500.00 - \$ 3000.00



Lot #516: PAIR OF FRENCH IVORY-MOUNTED GREEN-GROUND ENAMEL OPERA GLASSES

With gilt-enclosed floral reserves, turquoise and gilt borders; 3 1/4 x 4 1/4 in.

Estimate: \$ 150.00 - \$ 250.00



Lot #517: DUTCH MAHOGANY EBONIZED AND PARCEL-GILT PEAT BUCKET

21 3/4 x 12 1/2 in.

Estimate: \$ 400.00 - \$ 800.00



Lot #518: PAIR OF NEOCLASSICAL-STYLE MOTTLED MARBLE SQUAT CAMPANGNA-FORM URNS

With roll over rims, short stems and square bases; 14 in., 16 1/2 in. diam.

Estimate: \$ 500.00 - \$ 800.00



Lot #519: CAST COMPOSITION HEAD OF THE LAOCOÖN, AFTER THE ANTIQUE

The head with wreath-banded long curly hair, tilted back in anguish, on veined black marble socle; 13 3/4 x 8 1/2 in.

Estimate: \$ 800.00 - \$ 1200.00

Lot #520: NO LOT

[Back](#)

[Back to Index](#)

[Next](#)

Lots 521 - 530



Lot #521: ASSORTED 18TH CENTURY-STYLE GILT-METAL MOUNTS

Including a large pair of seated putti with grapes amidst scrollwork, a pair of mask heads, a pair with Pluto and Vulcan, a single eagle on husk swag, a small pair with seated river gods, a pair of ribbon-tied laurel wreaths, a tiered anthemion and horizontal scroll band and a vertical trellis and maskhead; largest 10 1/2 x 21 in.
Estimate: \$ 2000.00 - \$ 3000.00



Lot #522: PAIR OF NEOCLASSICAL-STYLE INLAID MARBLE URNS

Each ovoid partially reeded white bowl with black inlaid flutes and rim, shaped cover and block-form pedestal; 17 1/4 x 4 1/4 in.
Estimate: \$ 500.00 - \$ 800.00



Lot #523: PAIR OF BACCARAT CLEAR GLASS SPHERES ON LOUIS XVI-STYLE GILT-METAL STANDS

The stands with bead-rimmed cups on pierced tripod beaded supports, concave-sided base and paw feet; 10 1/4 x 7 1/4 in., 6 in. diam.
Estimate: \$ 2000.00 - \$ 4000.00



Lot #524: PAIR OF BACCARAT MOLDED GLASS SEVEN-LIGHT CANDELABRA WITH ENGRAVED SHADES

Each reeded stem on beaded bell-form base, supporting the spiral twist arms ending in prism-hung pans and nozzles, the shaded engraved with scrollwork; 23 1/4 x 15 1/2 in., 33 3/4 in. diam. with shades.
Estimate: \$ 3000.00 - \$ 5000.00



Lot #525: ITALIAN MICRO-MOSAIC RONDEL

Showing a view of the Roman forum, within malachite-inlaid border on black marble block, giltwood frame; 9 in.
Estimate: \$ 1200.00 - \$ 1800.00



Lot #526: ITALIAN MICRO-MOSAIC OVAL PLAQUE

Depicting the Colosseum in Rome, set into an oblong serpentine black marble block, in velvet-lined shadow box frame; 5 1/2 x 7 in., 12 1/2 x 13 3/4 in. (frame).
Estimate: \$ 1000.00 - \$ 1500.00

Lot #527: NO LOT



Lot #528: WOOLWORK PICTURE

Depicting a family with three children and a dog outside a cabin greeting a youth docking his boat, a pig at lower right, eglomise mat and giltwood frame; 16 1/2 x 20 in., 23 1/2 x 27 1/2 in. (frame). Estimate: \$ 300.00 - \$ 600.00

Lot #529: NO LOT



Lot #530: PAIR OF ENGLISH CUT-GLASS COMPOTES AND COVERS

Each bowl with roll-over rim, above cut swags and diamond bands, on knopped stem and circular fluted foot, the dome cover with tiered swags and honeycomb faceted knob; 14 in., 11 1/2 in. diam. Estimate: \$ 500.00 - \$ 700.00

[Back](#)

[Back to Index](#)

[Next](#)

Lots 531 - 540



Lot #531: EMPIRE-STYLE CARVED MARBLE BUST OF NAPOLEON

Facing forward with short curly hair and bare shoulders, the separate base panel inscribed, "Napoleon"; 20 1/2 x 12 1/2 x 12 in.

Estimate: \$ 1000.00 - \$ 1500.00



Lot #532: REGENCY BRASS-MOUNTED AND INLAID MAHOGANY TEA CADDY

The line-inlaid lid with ring handle, opening to two lidded boxes and central glass mixing bowl, the case on leaf, flower and lion's paw feet; 6 3/8 x 11 1/4 x 6 1/2 in.

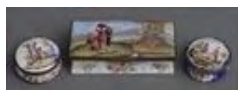
Estimate: \$ 300.00 - \$ 600.00



Lot #533: TWO PAIRS OF GEORGIAN BRASS CANDLESTICKS, A SINGLE STICK, AND A PAIR OF LATER STICKS

The Georgian with knopped stems and lobed bases, the later with oval bases; 5 1/4 to 9 3/4 in.

Estimate: \$ 800.00 - \$ 1200.00



Lot #534: CONTINENTAL GILT-METAL MOUNTED ENAMEL RECTANGULAR BOX AND TWO CIRCULAR BOXES

The first with peasant family on a hill above a river, the other with view of ruins or two 18th century figures, on dark blue ground (restored).

Estimate: \$ 300.00 - \$ 400.00



Lot #535: FRENCH TÔLE-PEINTE TRAY FITTED INTO EBONIZED WOOD STAND

The oblong hexagonal galleried tray with beaded edge and a garden view of two ladies and a youth peering out of a window, on saber legs; 18 3/4 x 21 1/2 x 16 1/2 in.

Estimate: \$ 1000.00 - \$ 2000.00



Lot #536: PAIR OF AUSTRIAN BAROQUE CARVED BOXWOOD FIGURES

The one representing St. John the Baptist with pascal lamb, the other St. John the Evangelist holding bible, flanked by an angel, each on trefoil foliate-banded base; 10 3/8 to 10 1/2 in.

Estimate: \$ 2500.00 - \$ 3500.00



Lot #537: TWO VICTORIAN BRASS FIELD TELESCOPES

The larger marked "M. Manent Cteur.," with three-part tube, fitted into a cast-iron rotating pivot, on folding oak tripod secured by chains, the other marked "James Lyle, West George St., Glasgow," on column stem and hinged steel tripod feet; 4 ft. 8 1/2 in. and 18 in.
Estimate: \$ 1000.00 - \$ 2000.00



Lot #538: J. GARNIER: FIGURAL VASE

Patinated and gilded bronze, impressed signature; modeled as a nude nymph emerging from a conch shell, with two doves; 10 1/4 x 7 3/4 in.
Estimate: \$ 700.00 - \$ 900.00



Lot #539: PAIR OF METAL-MOUNTED CAMEO-DECORATED CELADON-GLAZED URNS, MOUNTED AS LAMPS

The ovoid bowls centering classical maidens with grapes or flowers, within greek fret borders, flanked by female-headed handles, the stem on reeded, beaded and greek fret base; 33 x 9 in.
Estimate: \$ 800.00 - \$ 1200.00



Lot #540: PAIR OF RENAISSANCE REVIVAL BRONZE SIX-LIGHT CANDELABRA

Each fluted stem with ball-studded ring, on tripod griffin legs, supporting scrollwork arms with flambeau pendants; 33 x 15 1/2 in.
Estimate: \$ 1000.00 - \$ 1500.00

Lots 541 - 550



Lot #541: FIVE BOHEMIAN RUBY GLASS ARTICLES

Comprising a mug with engraved view, "Ketten bruite in Prag," a cut-glass vase, a scent bottle with hinged silver lid, an enameled octagonal lettered beaker and nine-sided vinework beaker; 3 to 7 7/8 in. x 1 1/2 to 4 1/2 in.

Estimate: \$ 300.00 - \$ 500.00



Lot #542: PAIR OF RENAISSANCE REVIVAL GILT-METAL FOUR-LIGHT CANDELABRA LAMPS

Each reeded stem with classical bust adorned with pinecone wreath, supporting the oil lamp-form arms, on tripod griffin legs joined by black marble concave-sided bases; 42 1/4 x 8 1/2 in.

Estimate: \$ 1000.00 - \$ 1500.00



Lot #543: ENAMELED SILVER SMALL COSMETIC BOX AND FOUR OTHER BOXES

The one impressed 935, with hinged lid with pink rose buds opening to mirror. Together with an ivory box with pierced twist-off lid, the others of porcelain, tooled leather or pierced gilt metal; 1 1/4 to 2 1/2 in.

Estimate: \$ 250.00 - \$ 350.00



Lot #544: EMPIRE-STYLE GILT-METAL DRESSING TABLE MIRROR

The circular beveled and swing plate within leaf-tip surround, supported by a winged classical maiden and flared legs ending in paw feet, resting on shaped base; 12 1/4 x 16 in.

Estimate: \$ 500.00 - \$ 800.00



Lot #545: FIVE LADY'S NOTE HOLDERS

Comprising two in ivory with carved love birds or silver-plate mount, an Austrian kitten-decorated enamel holder with calendar for 1914, a dance card with oval photograph and a tooled leather dance book; largest 3 7/8 x 2 1/2 in.

Estimate: \$ 300.00 - \$ 400.00



Lot #546: THREE BOHEMIAN ENGRAVED GLASS BEAKERS

The one with yellow, violet and rose flowerheads, the largest with four rondels of the four seasons and the last with six-pointed ovals centering crowned armorial; 3 7/8 to 5 in., 2 3/4 to 3 1/2 in. diam.

Estimate: \$ 300.00 - \$ 500.00



Lot #547: CHINESE EXPORT BLACK LACQUER TEA CADDY

The flattened dome chamfered lid with figures and scroll, opening to two fitted engraved pewter jars, the case on giltwood scroll feet; 5 1/2 x 8 3/8 x 5 3/4 in.
Estimate: \$ 400.00 - \$ 800.00



Lot #548: PAIR OF SOUTH STAFFORDSHIRE YELLOW-GROUND CANDLESTICKS AND A TAZZA EN SUITE

The knopped stems with removable nozzles and figure and floral reserves in rose camaieu, the tazza with farmer on a donkey herding a cow and a ewe, gilt highlights; 5 and 9 3/4 in.
Estimate: \$ 800.00 - \$ 1200.00



Lot #549: TWO SOUTH STAFFORDSHIRE ENAMEL TOKEN BOXES AND A FIGURAL DECORATED BOX

The tokens inscribed, "Have Communication with few..." and, "This and the give are thine for ever"; the last with two children (restored); 1 1/8 to 2 in.
Estimate: \$ 250.00 - \$ 350.00



Lot #550: SOUTH STAFFORDSHIRE ENAMEL OVAL BOX

The hinged lid with half-length portrait of a lady with mask, wearing red cap and caplet, within gilt scrollwork, the case with two scenic views; 1 3/4 x 2 3/4 in.
Estimate: \$ 400.00 - \$ 600.00

Lots 551 - 560



Lot #551: ART DECO LAPIS LAZULI, ROCK CRYSTAL AND BLACK ONYX TABLE CLOCK, MOVEMENT SIGNED VACHERON AND CONSTANTIN

Seventeen jewels; 5 x 4 in.
Estimate: \$ 200.00 - \$ 300.00



Lot #552: LIMOGES ENAMELED COPPER PROFILE PORTRAIT

Signed L. Joubert, Limoges; depicting a red-veiled woman, on violet ground, walnut and parcel-gilt frame; 4 1/2 x 3 1/4 in. (sight), 10 1/2 x 9 1/2 in. (frame).
Estimate: \$ 200.00 - \$ 300.00



Lot #553: TWO PORTRAIT MINIATURES OF A 16TH-CENTURY LADY, PROBABLY ANNE BOLEYN, AND AN 18TH-CENTURY LADY

The first in foliate-cast oval frame, the other signed in engraved ivory mat and husk-cast frame; 4 1/4 x 3 1/4 in. and 5 1/2 x 4 3/4 in.
Estimate: \$ 200.00 - \$ 400.00



Lot #554: FOUR 18TH CENTURY-TYPE MINIATURE PLAQUES

Comprising three rectangular with lovers in garden, a lady and putto and figures viewing distant castle, and an oval with two figures against a lake vista, gilt-metal frames; 1 7/8 x 2 3/8 in. to 2 3/4 x 3 1/4 in.
Estimate: \$ 200.00 - \$ 400.00



Lot #555: FRENCH GRAY-GROUND TERRACOTTA MINIATURE RELIEF

The oval aquatic scene with Venus and Eros in a seahorse-drawn shell, silk mat and giltwood frame; 9 x 10 1/2 in. (frame).
Estimate: \$ 200.00 - \$ 400.00



Lot #556: FOUR OVAL MINIATURE PICTURES

Comprising a pair with views of arched bridge or ships off coast, a single with twilight river and the last a floral still life, gilt-metal frames; 1 5/8 x 2 1/4 in. to 4 1/2 x 3 3/4 in.
Estimate: \$ 200.00 - \$ 400.00



Lot #557: OVAL PORTRAIT MINIATURE OF A 17TH CENTURY GENTLEMAN, IN THE MANNER OF RIGAUD
Watercolor on ivory, contained in Sèvres style porcelain bleu celeste ground and a gilt-metal frame with bow-knot crest; 7 3/4 x 5 5/8 in.
Estimate: \$ 200.00 - \$ 400.00



Lot #558: OVAL PORTRAIT MINIATURE OF A CHILD AND A CIRCULAR MINIATURE OF A YOUNG WOMAN
Watercolors on ivory, the one half-length wearing a lace-collared blue suit and holding flowers, the other wearing blue ribbon-banded straw hat, gilt-metal frames; 3 1/2 x 2 3/4 in. to 4 1/4 x 3 1/4 in.
Estimate: \$ 300.00 - \$ 500.00



Lot #559: TWO ENGLISH ENAMEL MINIATURE OVAL PORTRAITS AND TWO WATERCOLOR MINIATURES
The largest a half-length of a young woman with ribboned coif, swag border and beaded frame, the other enamel, a young man, in pierced frame, the other two of a 18th century gentleman; 1 1/4 x 1 in. to 3 1/4 x 2 1/8 in.
Estimate: \$ 300.00 - \$ 400.00

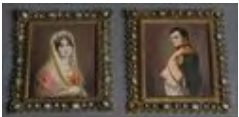


Lot #560: FOUR OVAL PORTRAIT MINIATURES
Watercolors on ivory, one showing a bewigged 18th c. gentleman, with gold monogram on reverse, two showing early 19th c. gentlemen, the last a mid-19th century profile of a woman with floral wreath; 2 3/4 x 2 1/4 in. to 3 x 2 1/2 in.
Estimate: \$ 400.00 - \$ 600.00

Lots 561 - 570



Lot #561: PORTRAIT MINIATURE SAID TO BE ELIZABETH DE FRANCE, EARLY 20TH CENTURY
Watercolor on ivory, signed lower right Michod (?), tiered leaf brass surround and ebonized frame; 8 x 6 1/4 in., 18 x 16 in. (frame).
Estimate: \$ 800.00 - \$ 1200.00



Lot #562: PAIR OF MINIATURE RECTANGULAR PORTRAITS OF NAPOLEON AND JOSEPHINE
Watercolors on ivory, each contained in turquoise-mounted gilt-metal frame; 4 1/2 x 3 3/4 in.
Estimate: \$ 250.00 - \$ 450.00



Lot #563: HENRY BONE: TWO ENGLISH OVAL PORCELAIN PORTRAIT MINIATURES, "LADY WM. YOUNG MARCH 1796" AND "MRS. NORTH NOV. 1804"
Gilt-metal frames, each inscribed on reverse and signed "Henry Bone Pinx" and signed H. Bone on surface; 3 1/4 x 2 5/8 in.
Estimate: \$ 400.00 - \$ 600.00



Lot #564: NATHANIEL PLINIR: MINIATURE PORTRAIT OF MISS CHARLOTTE PLINIR, DAUGHTER OF THE ARTIST
Watercolor on ivory, wearing floral-banded straw hat, black neck ribbon, pull-sleeved blouse and red and black dress, within pearlwork gold-fitted frame, inscribed on reverse; 5 1/8 x 3 7/8 in.
Estimate: \$ 400.00 - \$ 600.00



Lot #565: PAIR OF AMERICAN CHIPPENDALE SIDE CHAIRS
36 1/2 x 19 x 16 in.
Estimate: \$ 300.00 - \$ 600.00



Lot #566: AMERICAN MARBELIZED AND INCISED SLATE PARCHEESI BOARD
With central "Home" rondel, red and white arms and corner rondels; 20 x 20 in.
Estimate: \$ 200.00 - \$ 400.00



Lot #567: AMERICAN SCHOOL: PORTRAIT OF GEORGE WASHINGTON IN MASONIC ROBES

Oil on panel, 11 3/4 x 9 3/4 in., unsigned.
Estimate: \$ 3000.00 - \$ 6000.00



Lot #568: FEDERAL FIGURED BIRCH AND MAHOGANY BOW-FRONT CHEST OF DRAWERS

The case containing four cock-beaded drawers fitted with later brass oval drop handles, on splayed bracket feet; 39 x 41 1/2 x 22 1/2 in.
Estimate: \$ 1500.00 - \$ 3000.00



Lot #569: SHAKER FIGURED MAPLE ROCKING ARMCHAIR

The arched top rail and three splats on turned uprights ending in ovoid finials, the arms with disc hand holds, wicker seat; 44 3/4 x 21 1/2 in. Provenance: Private Collection, Rhode Island; John Keith Russell, South Salem, New York; George E. Schoellkopf, New York, New York; Collection of Adelaide de Menil, New York, New York; David A. Schorsch, Inc., New York
Estimate: \$ 800.00 - \$ 1200.00



Lot #570: AMERICAN COPPER AND ZINC PENNANT-FORM WEATHERVANE

The flag with two wavy stripes, and the arrow-form pointer with applied leaves, centered by nail-headed cylindrical pole guard; 10 1/2 x 4 ft. 6 1/2 in.
Estimate: \$ 800.00 - \$ 1200.00

Lots 571 - 580



Lot #571: FEDERAL FIGURED WALNUT CHEST OF DRAWERS

The molded top above four molded drawers with brass oval drop handles, raised on splayed bracket feet; 35 1/4 x 20 1/4 x 38 1/2 in.
Estimate: \$ 1000.00 - \$ 2000.00



Lot #572: AMERICAN SCHOOL: PORTRAIT OF A SEATED WOMAN AND CHILD

Oil on canvas, 29 3/4 x 26 in., unsigned.
Estimate: \$ 800.00 - \$ 1200.00



Lot #573: PENNSYLVANIA CHIPPENDALE WALNUT SLANT-FRONT DESK

The flap opening to scallop-fronted interior with central half shell-carved door, pigeonholes and drawers, above four cock-beaded drawers with brass bat's wing bail handles, the quarter-round fluted corners on ogee-bracket feet; 41 x 45 1/4 x 21 in.
Estimate: \$ 2500.00 - \$ 5000.00



Lot #574: AMERICAN CUT-SHEET METAL THREE-POINT STAG-FORM WEATHERVANE

Cut in profile with nailed armature, on wrought iron rod and rectangular base; the figure 21 x 18 in., 29 in. on base.
Estimate: \$ 700.00 - \$ 900.00

Lot #575: NO LOT



Lot #576: AMERICAN SCHOOL: LANDSCAPE WITH DISTANT VILLAGE

Oil on canvas, 11 x 16 1/8 in., signed G. Innes lower right.
Estimate: \$ 800.00 - \$ 1200.00



Lot #577: CHIPPENDALE-STYLE CARVED MAHOGANY CORNER ARMCHAIR

The horseshoe top rail above two pierced splats and the drop-in seat on cabriole and three turned legs joined by x-shape stretcher; 19 1/4 x 21 in.

Estimate: \$ 200.00 - \$ 400.00



Lot #578: GROUP OF TABLE ARTICLES

Comprising a pair of signed Kosta engraved glass decanters and stoppers, each with fly fisherman and leaping fish, with label, "No. 35 collection of President and Mrs. Franklin Delano Roosevelt"; together with a pair of silver labels, "Scotch" and "Rye"; 7 1/2 in.

Estimate: \$ 400.00 - \$ 800.00



Lot #579: AMERICAN SCHOOL: PORTRAIT OF A CHILD HOLDING A ROSE

Oil on canvas, 28 x 23 in., unsigned.

Estimate: \$ 800.00 - \$ 1200.00



Lot #580: AMERICAN HOLLOW CAST COPPER HORSE AND SULKY WEATHERVANE

The horse with zinc head, modeled trotting hitched to the sulky with driver wearing cap, on rod cross bar and wrought iron stand; 20 x 39 1/2 x 8 in.

Estimate: \$ 1200.00 - \$ 1800.00

Lots 581 - 590



Lot #581: SET OF SIX AMERICAN CLASSICAL-STYLE MAHOGANY DINING CHAIRS

Including one armchair, each with curved top rail, urn splat, drop-in seat and splayed legs; 34 1/4 x 18 in.

Estimate: \$ 800.00 - \$ 1200.00



Lot #582: G. GOULCHER: KENTUCKY LONG RIFLE

The engraved steel signature plate with hound and foliage, figured maple stock, brass and urn trigger and octagonal barrel; 4 ft. 3 1/2 in.

Estimate: \$ 1200.00 - \$ 1800.00



Lot #583: FEDERAL CARVED MAHOGANY SETTEE

The padded back with roll-over top rail and the arms on free-standing ringed and foliate vase supports, the bow-fronted seat on turned legs ending in brass thimble casters; 38 3/4 in. x 6 ft. 5 in.

Estimate: \$ 1000.00 - \$ 1500.00



Lot #584: SET OF ELEVEN AMERICAN CLASSICAL CARVED MAHOGANY SIDE CHAIRS

Each with paneled scrolled crest rail above a carved back splat over trapezoidal slip seat, raised on saber legs. Note: Property sold to benefit the Brooklyn Museum.

Estimate: \$ 4000.00 - \$ 8000.00



Lot #585: FEDERAL SILKWORK MOURNING PICTURE

Worked with church graveyard on the banks of a river, centered by a widow and two children at a tomb, "Sacred to the memory of Mr. Robert Ellis who departed this life on the 6th of January 1807 in the 60th year of his age," giltwood frame, with paper label on reverse; 14 1/2 x 20 1/2 in.

Estimate: \$ 1500.00 - \$ 2000.00



Lot #586: ATTRIBUTED TO ERASTUS FIELD: PORTRAIT OF A LADY (NEAR THE FAMILY PLOT)

Oil on canvas; 30 x 24 3/4 in.

Estimate: \$ 2000.00 - \$ 4000.00



**Lot #587: AMERICAN SCHOOL: FULL-LENGTH
PORTRAIT OF A BOY AND A GIRL**

Oil on canvas, 50 x 40 in., unsigned.

Estimate: \$ 2500.00 - \$ 5000.00



Lot #588: AMERICAN SCHOOL: GIRL IN AN INTERIOR

Pastel on paper, unsigned; 27 1/2 x 21 1/2 in.

Estimate: \$ 600.00 - \$ 800.00

Lot #589: NO LOT

Lot #590: NO LOT

[Back](#)

[Back to Index](#)

[Next](#)

Lots 591 - 600

Lot #591: NO LOT

Lot #592: NO LOT



Lot #593: FEDERAL MAHOGANY BIDET STAND

The dovetailed removable cover opening to a white-glazed pottery kidney-shape bowl, on tapered legs; 19 x 21 1/2 x 14 1/4 in.

Estimate: \$ 200.00 - \$ 400.00

Lot #594: NO LOT



Lot #595: NEW YORK FEDERAL CARVED MAHOGANY DROP-LEAF TABLE

With two trefoil leaves, the four leaf blade-carved supports centering a pineapple finial, on concave-sided base and foliate-carved saber legs; 28 1/4 x 35 3/4 x 23 1/4 in.

Estimate: \$ 800.00 - \$ 1200.00



Lot #596: CHIPPENDALE-STYLE CARVED MAHOGANY SIDE CHAIR

The shell and foliate top rail above a pierced splat and the drop-in seat above shell apron and cabriole legs ending in claw and ball feet; 39 1/2 x 22 in.

Estimate: \$ 1000.00 - \$ 1500.00



Lot #597: NEW ENGLAND FEDERAL INLAID MAHOGANY CARD TABLE

The bowed breakfront folding top with arrow point inlay, above a frieze with central tablet flanked by spool corners, on tapered reeded legs; 29 1/4 x 36 x 16 3/4 in.

Estimate: \$ 600.00 - \$ 800.00



Lot #598: NEW YORK FEDERAL MAHOGANY NIGHT STAND

Containing two drawers with turned pulls flanked by reeded corners, raised on reeded legs joined by lateral stretchers and ending in brass cup casters; 30 1/4 x 19 x 16 3/4 in.

Estimate: \$ 1000.00 - \$ 2000.00



Lot #599: NEW YORK CLASSICAL CARVED MAHOGANY SOFA

The shaped eagle-carved crest rail over padded back flanked by scrolled arms centering upholstered seat, the legs with leaf carved-brackets, terminating in paw feet; 37 in. x 6 ft. 1 in. x 25 1/2 in.

Estimate: \$ 2500.00 - \$ 4500.00



**Lot #600: COPPER-STAINED PLASTER MEDALLION:
GEORGE WASHINGTON PATER FAMILIAS
MDCCLXXXIX**

Modeled, designed and copyright by Philip Martiny; 4 5/8 in.

Estimate: \$ 250.00 - \$ 500.00