

## Lots 101 - 110



**Lot #101: PAIR OF PAINTED WROUGHT IRON TOPIARY TRELLISES**

Each of openwork spiral twist form on ring and spindle base; 5 ft. 10 1/2 in. tall, 22 1/2 in. diam.

Estimate: \$ 300.00 - \$ 400.00



**Lot #102: WHITE-PAINTED CAST IRON MULTI-TIER PLANT STAND**

The ringed stem with central pierced bowl and 11 adjustable arms with conforming bowls, on foliate cast base; 43 x 26 in.

Estimate: \$ 250.00 - \$ 350.00



**Lot #103: AFTER HARGUINIEZ: MANÈGE, LA CROUPE AU MUR**

Engraved by Benard, 13 3/8 x 9 in. (sight).

Estimate: \$ 75.00 - \$ 125.00



**Lot #104: FRENCH SCHOOL: TWO PRINTS**

The first an engraving after Poussin, 22 1/2 x 30 1/8 (sight), the second an etching, 14 3/4 x 20 1/4 in. (sight), and signed illegibly in margin.

Estimate: \$ 250.00 - \$ 350.00



**Lot #105: AFTER COROT: COUNTRYSIDE WITH FIGURE**

Etching and drypoint on paper, 13 3/8 x 19 1/8 in. (sight), signed in plate lower left.

Estimate: \$ 200.00 - \$ 300.00



**Lot #106: AFTER DE TROYE: LOUIS DUC DE BOURGOGNE**

Engravings on paper, 15 5/8 x 11 5/8 in. (plate, sight), together with 2 engravings of Frenchmen.

Estimate: \$ 300.00 - \$ 500.00



**Lot #107: AFTER ABBOTT: ALEXANDER, LORD BRIDPORT**

Engraved by N. Green together with an engraving of Lt. Col. Carleton after Reynolds and an engraving of John Scott, Baron Eldon.

Estimate: \$ 300.00 - \$ 500.00



**Lot #108: ANDERS ZORN: DAME MIT ZIGARETTE**

Etching on paper, 6 1/8 x 4 5/8 in. (sight), signed and dedicated in pencil below the image.

Estimate: \$ 400.00 - \$ 600.00



**Lot #109: WILLIAM AUERBACH LEVY: "CECCO"**

Drypoint on paper, 8 3/4 x 5 1/4 in. (plate, sight) together with "Journeys End" and a portrait of a bearded man.

Estimate: \$ 400.00 - \$ 600.00



**Lot #110: LOVIS CORINTH: JOSEPH INTERPRETS PHARAOH'S DREAM**

Etching on paper, 13 3/8 x 16 in. (plate, sight), signed lower right in margin.

Estimate: \$ 75.00 - \$ 125.00

[To Top](#)

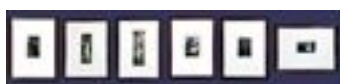


## Lots 111 - 120



**Lot #111: LOUIS ICART: THE PINK SLIP**

Print in color, 19 3/4 x 11 1/2 in., signed.  
Estimate: \$ 400.00 - \$ 600.00



**Lot #112: AFTER EDWARD BURNE-JONES: SIX PRINTS**

Collotype reproductions of the original paintings, 32 x 25 in. or 25 x 32 in. (frame size), published by The Berlin Photographic Co., Berlin, London, New York.  
Estimate: \$ 2000.00 - \$ 4000.00



**Lot #113: "NEW PICTORIAL PHRENOLOGICAL CHART"**

Engraving on paper, 8 3/4 x 6 7/8 in. (sight), together with an engraving after van Calcar from De Humana Corporis Fabrica, Andreas Vesalius, 1543.  
Estimate: \$ 125.00 - \$ 175.00



**Lot #114: GOULD AND RICHTER: "ANDIGENA CUCULLATUS"**

Lithograph in colors on paper, 21 1/2 x 14 1/4 in. (sheet, sight).  
Estimate: \$ 800.00 - \$ 1200.00



**Lot #115: ATTRIBUTED TO ADELAIDE LABILLE-GUIARD (1749-1803): PORTRAIT OF M. BACHELIER DE L'ACADEMIE ROYAL DE PEINTURE**

Pastel on paper, 20 3/8 x 18 5/8 in. (sight), unsigned. According to the consignor, this pastel is a copy of a larger portrait in the Louvre.  
Estimate: \$ 5000.00 - \$ 7000.00



**Lot #116: SOPHIA FRANCES TOWER (ca.1859-1879): WATERCOLOR ALBUM**

Album of watercolor and other works on paper including interiors of Tresco Abbey Isles of Scilly and Audley End; sitting room in Brownslow's cottage at Nevill Holt; the majority inscribed, some numbered and dated variously 1859-1879; the album measures 13 1/2 x 17 3/4 in., the artwork measures 10 1/2 x 17 3/4 in. and smaller. Provenance: Christie's, London, "Interiors" ca. Nov. 1994.

Estimate: \$ 3000.00 - \$ 4000.00



**Lot #117: ATTRIBUTED TO AAGE BERNHARD-FREDERIKSEN (1883-1963): INTERIOR SCENE**

Oil on canvas, 20 x 18 in., signed lower right.

Estimate: \$ 400.00 - \$ 600.00



**Lot #118: EUROPEAN SCHOOL: SUMMER LANDSCAPE**

Oil on canvas, 21 1/8 x 17 1/8 in., unsigned.

Estimate: \$ 300.00 - \$ 500.00



**Lot #119: ROBERT B. GRAHAM: "STERLING FROM CLACKMANNAN TOWER"**

Oil on canvas, 12 1/4 x 16 in., with information on label verso.

Estimate: \$ 400.00 - \$ 600.00



**Lot #120: PHILIP OSMENT: WELSH SCENERY**

Two watercolors on paper, 10 1/8 x 14 in. and 10 1/8 x 14 1/8 in. (signed), one signed lower left, one signed lower right.

Estimate: \$ 150.00 - \$ 250.00

## Lots 121 - 130



**Lot #121: EUROPEAN SCHOOL: THE GREEN VALLEY**

Oil on masonite, 12 x 18 in., unsigned.

Estimate: \$ 75.00 - \$ 125.00



**Lot #122: ATTRIBUTED TO RICHARD WHATLEY WEST: FALLS OF CLYDE**

Oil on canvas, 40 x 72 in., signed lower left and titled and signed on verso.

Estimate: \$ 600.00 - \$ 800.00



**Lot #123: EUROPEAN SCHOOL: SANDY BEACH**

Oil on wood panel, 8 13/16 x 11 9/16 in., signed on verso Caterina\_\_[?].

Estimate: \$ 200.00 - \$ 300.00



**Lot #124: HARBOR SCENE AT SUNRISE AND MOUNTAIN LANDSCAPE**

Each, oil on canvas, 21 1/2 x 35 1/2 in.

Estimate: \$ 800.00 - \$ 1200.00



**Lot #125: EUROPEAN SCHOOL: PORTRAIT OF A BEARDED MAN**

Oil on canvas, relined, half-length portrait of an "Elder" with water jug and pipe, 28 3/4 x 24 1/2 in.

Estimate: \$ 500.00 - \$ 700.00





**Lot #126: F. R. COUGHEY: DESERT ROMANCE**

Oil on canvas, 34 x 49 in., relined, signed lower right.  
Estimate: \$ 300.00 - \$ 500.00



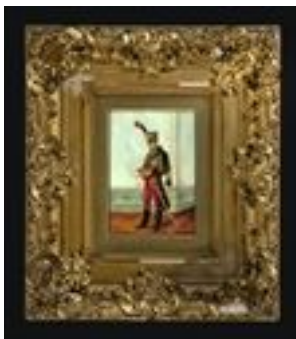
**Lot #127: EUROPEAN SCHOOL: THE LOVE LETTER**

Oil on tin, 8 x 6 1/2 in., unsigned.  
Estimate: \$ 100.00 - \$ 200.00



**Lot #128: PAUL GROLLERON: PORTRAIT OF A SOLDIER**

Oil on panel, 10 1/2 x 7 1/2 in., signed and dated 1882 lower right.  
Estimate: \$ 400.00 - \$ 600.00



**Lot #129: ALBERT BLIGNY: PORTRAIT OF A HUSSAR**

Oil on wood panel, 8 1/2 x 6 1/4 in., signed lower left.  
Estimate: \$ 400.00 - \$ 600.00



**Lot #130: EUROPEAN SCHOOL: PORTRAIT OF A RIFLEMAN**

Oil on canvas laid down on cradled panel, 12 x 6 1/2 in., signed indistinctly lower right.  
Estimate: \$ 300.00 - \$ 500.00

## Lots 131 - 140



**Lot #131: LUDWIG KOCH: "FLUGELADJUTANT"**

Gouache on paper, 12 1/2 x 18 1/8 in. (sight), signed and dated 1904.  
Estimate: \$ 100.00 - \$ 200.00



**Lot #132: EUROPEAN SCHOOL: PORTRAIT OF A MAN WITH GOLD COIN**

Oil portrait of a man in Renaissance clothes on shaped panel inset into frame; 27 1/2 x 20 in.  
Estimate: \$ 100.00 - \$ 200.00



**Lot #133: ENGLISH SCHOOL: PORTRAIT OF A YOUNG MAN**

Oil on canvas, 24 1/8 x 21 5/8 in., relined, unsigned.  
Estimate: \$ 75.00 - \$ 125.00



**Lot #134: EUROPEAN SCHOOL: PORTRAIT OF A YOUNG BOY**

Oil portrait of a boy etching a metal plate, 17 1/2 x 14 in.  
Estimate: \$ 400.00 - \$ 600.00





**Lot #135: CONTINENTAL SCHOOL: RAIDING THE NEST**

Oil on canvas, 20 x 16 in., relined, unsigned.

Estimate: \$ 75.00 - \$ 125.00



**Lot #136: EUROPEAN SCHOOL: PAIR OF GENRE SCENES**

Oils on paperboard, 6 3/4 x 5 1/4 in., unsigned.

Estimate: \$ 300.00 - \$ 500.00



**Lot #137: EUROPEAN SCHOOL: COURTING COUPLE**

Oil on canvas, 14 1/4 x 22 in., unsigned.

Estimate: \$ 300.00 - \$ 500.00



**Lot #138: MADLER ROBERT: THE LETTER**

Oil on panel, 10 5/8 x 14 1/4 in., signed and dated 1923 lower left.

Estimate: \$ 300.00 - \$ 500.00



**Lot #139: EUROPEAN SCHOOL: TAVERN SCENE**

Oil on canvas, relined, 9 1/2 x 13 in., unsigned.

Estimate: \$ 300.00 - \$ 500.00



**Lot #139A: CONTINENTAL SCHOOL: PAIR OF GENRE SCENES**

Oil on canvas, relined, each 25 1/4 x 34 1/2 in.

Estimate: \$ 2000.00 - \$ 3000.00



**Lot #140: PAUL MEAD: "BEWARE OF THE DOG"**

Oil on paperboard, 10 1/2 x 12 in., titled upper left and inscribed on the dog's collar "AV Willis Atlantis [?] / Brooklyn" and signed and inscribed on verso.

Estimate: \$ 250.00 - \$ 350.00

[To Top](#)



## Lots 141 - 150



**Lot #141: FERDINAND DOR. DANTON: HUNTER WITH POINTERS BY STREAM**

Oil on canvas, 30 x 41 in., signed lower left F. Dor. Danton.  
Estimate: \$ 1800.00 - \$ 2200.00



**Lot #142: FRANCIS W. DELAHANTY: GENTLEMAN IN HUNTING PINKS**

Watercolor and pencil on paper, 21 7/8 x 16 in. (image, sight), signed and dated 1926 lower right.  
Estimate: \$ 300.00 - \$ 500.00



**Lot #143: NEIL CAWTHORNE: OVER THE WATER**

Oil on canvas, 23 3/4 x 29 7/8 in., signed lower right.  
Estimate: \$ 1200.00 - \$ 1800.00



**Lot #144: CLAUD LOVAT FRASER: "OTOGYPS CALVUS"**

Ink and watercolor on paper, 9 1/4 x 7 in., signed lower right and dated 1919. Exhibited: Victoria and Albert Museum, 1969.  
Estimate: \$ 200.00 - \$ 300.00



**Lot #145: BRONZE, THE FIGURE OF CAESAR, AFTER THE ANTIQUE**

The bare-footed figure with breast plate over toga, holding a staff in his left hand, with right raised, flanked by a boy on a dolphin, on red marble base; 14 in. tall, with stand: 18 3/4 in.  
Estimate: \$ 400.00 - \$ 600.00



**Lot #146: AFTER COINCHON: THE FIDDLER**

Bronze, modeled as an 18th century fiddle player dancing on grapevine entwined barrel top, impressed signature; 16 x 7 3/4 in.

Estimate: \$ 700.00 - \$ 900.00



**Lot #147: AFTER A. MONCEL: THE WATER CARRIER**

Bronze, modeled as a bare-foot girl with exposed breast and carrying a cross bar with 2 pails of water, impressed signature, Barbedienne foundry mark; 17 1/2 x 4 1/2 x 4 1/2 in.

Estimate: \$ 700.00 - \$ 900.00



**Lot #148: AFTER CLODION: WEEPING CHILD SATYR**

Bronze figure seated on a stump left hand over eyes and right embracing his head, impressed signature; 23 x 16 x 10 1/2 in.

Estimate: \$ 700.00 - \$ 900.00



**Lot #149: AFTER A. LAURENT: FISHERMAN**

Bronze, impressed signature; 12 3/4 in. tall.

Estimate: \$ 300.00 - \$ 500.00



**Lot #150: AFTER A. GAUDEZ: "DEVOIR"**

Brown patinated bronze figure of a youth with belted animal skin loin cloth, holding a sword and plow, impressed signature the base applied with plaque; 17 3/4 x 6 1/2 x 6 1/2 in.

Estimate: \$ 700.00 - \$ 900.00

[To Top](#)



## Lots 151 - 160



**Lot #151: AFTER T. CARTIER: GROWLING LIONESS**

Bronze, impressed signature; 8 1/2 x 10 1/2 x 5 1/2 in.  
Estimate: \$ 300.00 - \$ 500.00



**Lot #152: AFTER JEAN-BAPTISTE CARPEAUX: BUST OF A NYMPH**

Bronze on marble base, impressed signature, on a marble base; overall:  
25 1/2 x 19 x 12 in.  
Estimate: \$ 4000.00 - \$ 6000.00



**Lot #153: AFTER M. SAIN: ART DECO NYMPH WITH BASKET OF PLENTY**

Bronze and parcel-gilt figure of a nude holding aloft a fruit-filled drapery-hung basket, d-shape base with impressed signature, impressed foundry mark La Stele; 34 1/2 x 17 x 6 1/2 in. Provenance: The estate of Frederick W. Hughes.  
Estimate: \$ 1800.00 - \$ 2200.00



**Lot #154: PERSIAN RUG**

The terracotta field with stepped medallion and spandrels, foliate primary and 2 wine glass borders; approx. 4 ft. 3 in. x 6 ft. 6 in.  
Estimate: \$ 300.00 - \$ 400.00



**Lot #155: OUSHAK CARPET**

The abrashed pea green field centered by a salmon and saffron medallion, within salmon flower and saffron serrated leaf border; approx. 12 ft. 5 in. x 15 ft. 4 in.  
Estimate: \$ 2500.00 - \$ 3500.00





**Lot #156: QASHQAI CORRIDOR CARPET**

Red and burnt orange borders with blue surroundings; 20 ft. 9 in. x 8 ft. 9 in.

Estimate: \$ 2000.00 - \$ 4000.00



**Lot #157: KIRMAN CARPET**

Green and red borders; 17 ft. 1 in. x 10 ft. 7 in.

Estimate: \$ 800.00 - \$ 1200.00



**Lot #158: BRONZE FLOOR LAMP, AFTER THE ANTIQUE**

The reeded stem on tripod lion's legs spaced by pendant anthemion, on a concave-sided base surmounted by a pivoting arm with oil lamps and putto and eagle, lacking shade; 4 ft. 10 1/2 in.

Estimate: \$ 700.00 - \$ 900.00



**Lot #159: PAIR OF REGENCY-STYLE BRASS-MOUNTED ENGRAVED GLASS THREE-LIGHT HALL LANTERNS**

With grape and feathered branch decoration, 18 in. tall, 9 in. diam.

Estimate: \$ 400.00 - \$ 800.00



**Lot #160: TWO SIMILAR REGENCY-STYLE METAL-MOUNTED ENGRAVED GLASS HALL LANTERNS**

The larger with flowerhead and branch decoration, 23 1/2 in. x 12 1/4 in., the other DeGrelle, Val St. Lambert.

Estimate: \$ 400.00 - \$ 800.00

## Lots 161 - 170



**Lot #161: PAIR OF REGENCY-STYLE BRASS-MOUNTED ENGRAVED GLASS THREE-LIGHT HALL LANTERNS**

With 5-petal leaf and grape decoration; 13 1/2 in. tall, 7 in. diam.  
Estimate: \$ 400.00 - \$ 800.00



**Lot #162: LOUIS XVI-STYLE GILT-BRONZE CARTEL CLOCK**

The enamel dial signed Chas. LeRoy à Paris; within a case surmounted by husk-hung urn and flanked by lion skin joined to lion's head at pendulum door, pendant pomegranate base; 31 x 15 1/2 in.  
Estimate: \$ 800.00 - \$ 1200.00



**Lot #163: GEORGE III BRASS-MOUNTED MAHOGANY BRACKET CLOCK**

The 6 3/4 in. enamel dial signed Reid Edinburgh and the brass movement also signed Thos. Reid Edinburgh and dated 1797, within a breakarch case with pierced arch lateral panels, drop handle and ogee bracket feet; 12 3/4 x 11 1/2 x 7 1/8 in.  
Estimate: \$ 1000.00 - \$ 1500.00



**Lot #164: PAIR OF FRENCH GILT-METAL AND PATINATED POT METAL OIL LAMPS**

Each baluster-form strapwork bowl with applied s-scroll handles joined by grape leaves, electrified; to finials: 29 1/2 in. tall.  
Estimate: \$ 200.00 - \$ 400.00



**Lot #165: PAIR OF EMPIRE-STYLE GILT-BRONZE FOUR-LIGHT CANDELABRA**

Each flared and beaded stem with raised central arm with removable finial and 3 s-scroll arms, tripod dolphin feet on concave-sided base; 21 3/4 x 7 1/2 in.

Estimate: \$ 500.00 - \$ 800.00



**Lot #166: WEDGWOOD BLUE AND WHITE TRANSFER-PRINTED HEXAGONAL STOOL**

Mark Wedgwood Etruria, England; with 3 identical lakeside scenes, the seat pierced with carrying handles; 17 1/2 x 14 1/2 in.

Estimate: \$ 250.00 - \$ 450.00



**Lot #167: PAIR OF BAROQUE CARVED GILTWOOD PRICKET STICKS**

Of triangular outline, with leaf-carved panels, on tripod feet; 27 in. tall.

Estimate: \$ 700.00 - \$ 900.00



**Lot #168: PAIR OF GILTWOOD TWO-ARM SCONCES**

28 1/2 x 16 in.

Estimate: \$ 1000.00 - \$ 1500.00



**Lot #169: FRENCH GILT-METAL MOUNTED CUT GLASS BOX**

The flute and diagonal grid cut surface with bands die cast with anthemion and spade, the key escutcheon with wreath and crossed branches; 4 1/4 x 3 7/8 x 2 3/4 in.

Estimate: \$ 400.00 - \$ 600.00



**Lot #170: PAIR OF CHINESE BRASS-INLAID PEWTER LAMPS**

Each angular tapered stem with bird and flower inlay at the front, brass-banded foot and ebonized plinth; 24 in.

Estimate: \$ 1000.00 - \$ 2000.00

[To Top](#)



## Lots 171 - 180



**Lot #171: PAINTED COMPOSITION HEAD OF NEFERTITI**

Impressed medallion, "Gipsform Reider Staatl Museum, Berlin," on stained wood base; 23 x 9 x 14 in. (overall).

Estimate: \$ 500.00 - \$ 700.00



**Lot #172: PAIR OF NEOCLASSICAL-STYLE BRONZE AND MARBLE URNS, MOUNTED AS LAMPS**

Each ovoid bowl with relief band of classical figures flanked by gilt-metal handles, the black marble bases with Medusa marks at the corners on bracket feet; 31 in. tall.

Estimate: \$ 800.00 - \$ 1200.00



**Lot #173: LOUIS XVI-STYLE ORMOLU SMALL MANTLE CLOCK**

The 4 in. enamel dial signed Meunier le jeune à Paris, within a breakarch case with pomegranate finials, drop handle, chamfered fluted corners, Greek fret band and disc feet, modern 11 jewel movement; 7 1/2 x 6 1/2 x 3 1/2 in.

Estimate: \$ 500.00 - \$ 800.00



**Lot #174: FRENCH GILT-METAL MOUNTED WALNUT FIGURAL CLOCK**

The works by Leroy, Paris with enamel dial within breakarch crest modeled with mounted huntsman, hounds and a stag, the base centered by a hunt trophy, on boar's head feet; 22 x 26 1/2 x 11 1/4 in.

Estimate: \$ 800.00 - \$ 1200.00



**Lot #175: PAINTED WOOD SHOP MODEL OF A THREE-MASTED CLIPPER SHIP**

With black and white hull, the masts with string rigging, composition waves, oak veneered and glass case; 16 3/4 x 20 3/4 in., 8 in. diam.

Estimate: \$ 500.00 - \$ 700.00



**Lot #176: EMPIRE-STYLE GILT-METAL THREE-LIGHT BOUILLOTTE LAMP**

The urn stem on dished base supporting the swan-form arms and urn nozzles, the spindle stem with adjustable green tole shade; 29 in. tall, 16 1/2 in. diam.

Estimate: \$ 400.00 - \$ 600.00



**Lot #177: CONTINENTAL BRASS PARADE HELMET, MOUNTED AS A LAMP**

The domed cap with pointed visor and neck protector applied with cartouche of crossed axes and canons centering flambeau torch, winged dragon crest, on stepped ebonized base; overall: 33 x 9 x 2 in.

Estimate: \$ 250.00 - \$ 350.00



**Lot #178: FRENCH MEDIEVAL CHAMPLEVE ENAMEL AND GILT CREST PANEL**

The arched panel centered by an angel with open arms flanked at either side by an angel holding a disc with sun rays or a crescent moon, the blue field inlaid with floral scrolls; 9 1/2 x 16 1/4 in.

Estimate: \$ 800.00 - \$ 1200.00



**Lot #179: GEORGE III IVORY AND METAL-MOUNTED TORTOISESHELL TEA CADDY**

The flattened dome cover opening to silvered paper lined interior, metal keyhole escutcheon; 4 1/4 x 5 1/2 x 3 1/2 in.

Estimate: \$ 300.00 - \$ 500.00



**Lot #180: SWISS MARQUETRY-INLAID WALNUT MUSIC BOX**

Playing 12 airs, with 16 1/2 in. cylinder and change/repeat and stop/play levers and crank, the hinged lid with inlaid music trophy, the front with painted flowers, flanked by drop handles; 8 1/4 x 30 1/4 in.

Estimate: \$ 2000.00 - \$ 3000.00



## Lots 181 - 190



**Lot #181: CRAFTSMAN STUDIOS COPPER CHAMBER STICK LAMP**

Impressed mark above anvil and hammer and hand made; the low dome base with crimped rim and ring handle, fitted with glass chimney and copper over shade; to chimney: 8 3/4 in. tall, 8 1/4 in.

Estimate: \$ 100.00 - \$ 200.00



**Lot #182: RENAISSANCE-STYLE TERRACOTTA RELIEF PLAQUE**

Centered by a grotesque satyr mask encircled by acanthus scrollwork; 25 1/4 x 37 x 5 in.

Estimate: \$ 300.00 - \$ 500.00



**Lot #183: RIVIERE STUDIOS BRONZE AND GREEN ONYX GLASS PICTURE FRAME**

The border with pierced overlay vine pattern and beaded rims, easel support, impressed Riviere Studios, NY on back plate; 11 1/2 x 9 1/4 in., opening: 6 1/8 x 4 in.

Estimate: \$ 200.00 - \$ 300.00



**Lot #184: GEORGE III BRASS-BANDED MAHOGANY NAVETTE PLATE PAIL**

With brass liner, swing handle and 4 bands; 13 1/8 x 14 3/4 x 9 1/2 in.

Estimate: \$ 1000.00 - \$ 1500.00



**Lot #185: TWO SIMILAR REGENCY-STYLE ENGRAVED GLASS HALL LANTERNS**

The one by DeGrelle, Val St. Lambert, with silvered repoussé band and flowers and branch engraving, the other unmarked, with brass ring support and ivy band; larger: 17 in. tall, 9 1/2 in. diam.

Estimate: \$ 400.00 - \$ 600.00



**Lot #186: GEORGE III INLAID MAHOGANY CUTLERY BOX**

The scallop-fronted sloping hinged lid with oval floral medallion opening to stationary recesses, the front with brass keyhole escutcheon and diagonal stringing at the corners; 14 x 9 x 9 1/4 in.

Estimate: \$ 500.00 - \$ 700.00



**Lot #187: REGENCY TORTOISESHELL-INLAID REVERSE SERPENTINE-FRONTED TEA CADDY**

The hinged top opening to lidded compartments, flared base; 5 1/4 x 7 3/4 in.

Estimate: \$ 500.00 - \$ 700.00



**Lot #188: TWO REGENCY WOOLWORK PICTURES ON SILK**

The one a man with pipe and a rod accompanied by a girl with jug and plate, the other a girl feeding hens in a barnyard; giltwood frames, one with eglomisé mat; framed: 18 x 14 3/4 in. and 17 3/4 x 15 1/2 in.

Estimate: \$ 500.00 - \$ 700.00



**Lot #189: SET OF FOUR REGENCY-STYLE BRASS-MOUNTED ENGRAVED GLASS THREE-LIGHT HALL LANTERNS**

Each grape and leaf bowl with engraved ring with 3 s-hooks joined by chains to chimney cover; 19 1/2 in. tall, 9 in. diam.

Estimate: \$ 800.00 - \$ 1200.00



**Lot #190: ENGLISH TRANSFER-PRINTED CREAMWARE TEA CADDY**

The cylindrical bowl with 2 scenes al fresco of 3 figures playing board game and lady at churn with boy; 5 in. tall, 3 5/8 in. diam.

Estimate: \$ 200.00 - \$ 400.00

[To Top](#)



## Lots 191 - 200



**Lot #191: PAIR OF ENGLISH CUT-GLASS URNS AND COVERS, ANOTHER AND A PAIR OF SWEETMEAT DISHES**

The diamond-faceted bowls with sawtooth rims on hexagonal stems, dome covers, the single with honeycomb surface beneath engraved sawtooth band, bell-form cover, the boat-form dishes on hexagonal base; 3 3/4 to 10 in. tall and 4 1/2 to 5 in. wide.

Estimate: \$ 500.00 - \$ 800.00



**Lot #192: WROUGHT IRON AND COPPER-MOUNTED PAINTED WOOD SHOP SIGN: "JOHN BURTON REYNOLDS ANTIQUES"**

The brown-ground circular sign with applied crown, ribbon-bound acorn and oak leaf branches and the British Royal Coat-of-Arms, wrought iron rim and chain hangers; 40 in. diam.

Estimate: \$ 600.00 - \$ 800.00



**Lot #193: FRENCH PROVINCIAL WALNUT MINIATURE COMMODOE**

The molded top above 2 short and 2 long molded drawers with brass pulls; 10 x 14 1/4 x 8 in.

Estimate: \$ 300.00 - \$ 500.00



**Lot #194: APPLE-FORM FRUITWOOD TEA CADDIE**

6 x 5 in.

Estimate: \$ 300.00 - \$ 500.00



**Lot #195: PAIR OF LOUIS XV-STYLE SILVERED AND ORMOLU S-LIGHT CANDELABRA**

15 1/4 x 8 in.

Estimate: \$ 500.00 - \$ 1000.00



**Lot #196: FLEMISH CARVED, PAINTED AND PARCEL GILT RELIEF PANEL: THE NATIVITY**

The arched composition with kneeling Mary and 2 angels, Joseph, 2 shepherds, cow and sheep, above 1/2-length angel with banner on oak ground; 20 1/4 x 12 3/4 in.

Estimate: \$ 800.00 - \$ 1200.00



**Lot #197: CONTINENTAL CARVED WOOD CRUCIFIX**

With head falling to the right, belted lion cloth and crossed feet, traces of polychrome decoration; together with a smaller crucifix, of later date, with polychrome and gilt decoration; 15 x 15 x 4 in. and 9 x 8 1/2 x 1 3/4 in.

Estimate: \$ 200.00 - \$ 300.00



**Lot #198: FRENCH CARVED IVORY FIGURE OF CHRIST CRUCIFIED, ON EBONIZED CROSS**

The head listing to left with open mouth, belted loin cloth crossed nailed feet, above skull, the cross on flared base; 8 1/2 x 6 3/4 in., of cross: 21 1/4 x 9 3/4 in.

Estimate: \$ 500.00 - \$ 800.00



**Lot #199: SPANISH COLONIAL CARVED FIGURE OF THE MADONNA**

Standing in belted gown and cloak, traces of red and tan polychrome decoration, separate base; 12 1/2 x 5 1/2 in. (overall).

Estimate: \$ 250.00 - \$ 350.00



**Lot #200: TWO RUSSIAN STONE-MOUNTED TORAH POINTERS**

Marks for A.K. above 1844 and O.C. above 1893: the earlier with hexagonal tapered handle, oval cabochon, and pointed finger, the other handle with Star-of-David enclosing faceted stone beneath pierced crown, the gloved hand with 2 faceted stones; 11 1/4 and 10 in. long.

Estimate: \$ 300.00 - \$ 500.00