

Lots 101 - 110



Lot #101: CHINOISERIE LACQUER LOW TABLE

Height: 15 in., Length: 39 in.

Estimate: \$600 - \$800



Lot #102: GEORGE I WALNUT & PARCEL-GILT BUREAU BOOKCASE

The flat top above two mirrored doors opening to adjustable shelves, the slant-front opening to a slide concealed wall, drawers and pigeon holes above two short and two long drawers.

Height: 6 Ft., 5 and 1/2 in., Width: 37 3/4 in., Depth: 22 1/2 in.

Estimate: \$3,000 - \$5,000



Lot #103: LOUIS XVI STYLE INLAID BREAKFRONT COMMODE WITH WHITE MARBLE TOP

Containing two drawers each with three panels and fitted with gilt metal ring drop handles, square tapered legs.

Height: 32 1/4 in., Width: 32 3/4 in., Depth: 17 in.

Estimate: \$1,000 - \$1,500



Lot #104: LOUIS XVI PROVINCIAL INLAID FRUITWOOD SMALL COMMODE

The trapezoidal marble top above three drawers flanked at either side by a shallow cupboard.

Height: 28 1/4 in., Width: 20 1/2 in., Depth: 15 1/2 in.

Estimate: \$700 - \$900



Lot #105: GEORGE III MAHOGANY & PARCEL-GILT MIRROR

The frame with petal tip inner border, the shaped frame with swan's neck and eagle crest above pendant fruit branches.
Dimensions: 53 in. x 25 1/2 in.

Estimate: \$2,500 - \$3,500



Lot #106: LOUIS-PHILIPPE MAHOGANY RAFRAICHISOIR

Height: 29 1/2 in., Width: 15 1/2 in., Depth: 15 3/4 in.

Estimate: \$400 - \$600



Lot #107: PAIR OF GEORGE III STYLE CARVED MAHOGANY OPEN ARMCHAIRS

Estimate: \$700 - \$900



Lot #108: VENETIAN BAROQUE STYLE GLASS MIRROR

Dimensions: 30 1/2 in. x 25 in.

Estimate: \$800 - \$1,200



Lot #109: AMERICAN ENGRAVED POWDER HORN

Inscribed, "Daniel Read's Powder Horn Made in Lisbon and State of Connecticut March ye 3rd 1802" and engraved with ships, flowering tree, a manor house and figures, and further inscribed, "As Cold", "Presumption" and "Cruelty".

Length: 16 in.

Estimate: \$4,000 - \$6,000



Lot #110: GROUP OF FIVE COIN BANKS

In the form of cash registers, by Louis Marx & Co. & Amer. Can Co., fruit machine, "Howdy Podner," by Rexco, a safe, by Key Lock and a Danish silver-plated cottage.
Heights: 3 5/8 in. to 7 in.

Estimate: \$125 - \$175



Lot #111: GROUP OF FOUR COIN BANKS

Comprising: a copperized metal "Lindy-Bank" 1928; a painted cast iron George Washington, after Kednett; a tin drum bank; and a black ground stenciled wood bank.
Heights: 3 3/4 in. to 6 1/2 in., Widths: 3 in. to 5 in.

Estimate: \$100 - \$150



Lot #112: AMERICAN PIERCED TIN CYLINDRICAL HAND LANTERN

With funnel top and ring handle.
Height: 24 1/2 in.

Estimate: \$200 - \$400



Lot #113: PAINTED TIN LONG HORN

Length: 4 Ft. 7 in.

Estimate: \$200 - \$400



Lot #114: TWO GLAZED POTTERY PIGGY BANKS AND A BROWN GLAZED TREE STUMP-FORM COIN BANK

Heights: 2 1/4 in. to 3 1/2 in., Width: 3 3/4 in. to 7 1/4 in.

Estimate: \$75 - \$125



Lot #115: GROUP OF SEVEN WOOD TABLE ARTICLES

Comprising: a stemmed 5 3/4 in. burr bowl, a 2 1/4 in. lidded box and five ladles.
Length of ladles: 5 in. to 13 1/4 in.

Estimate: \$200 - \$400



Lot #116: ITALIAN PIETRA DURA PANEL OF A KNIFE IN WATERMELON

With label on reverse, "Leopolds Menegatti
Mosaici...Firenze."

Dimensions: 6 5/8 in. x 9 in.

Estimate: \$150 - \$200



Lot #117: PAIR OF BAROQUE CARVED PINE NARROW VERTICAL PANELS

Each with a cherub and fruit branches.

Height: 31 1/2 in., Width: 4 in.

Estimate: \$200 - \$300



Lot #118: CONTINENTAL ROCOCO CARVED, PAINTED & PARCEL-GILT OVERDOOR PANEL

Relief carved with cross branches and a shell.

Dimensions: 22 in. x 36 in.

Estimate: \$200 - \$400



Lot #119: INDIAN CARVED SANDSTONE FIGURE GROUP OF A MALE DEITY WITH FINIAL ON KNEE AND WITH ATTENDANT

On black-painted block-form base.

Height: 14 1/4 in., Width: 7 in.

Estimate: \$250 - \$350



Lot #120: INDIAN WOOD RELIEF CARVING OF AN ELEPHANT

Approximately 28 in. x 13 3/4 in.

Estimate: \$200 - \$400



Lot #121: THREE INDIAN PAINTED MANUSCRIPT ILLUMINATIONS

Goler/Kangra School, showing prince on a water buffalo, prince on a duck and a Nobleman with water pipe and two attendants.

Sight: 7 1/4 in. x 4 1/2 in. and 10 3/4 in. x 8 in.

Estimate: \$500 - \$700



Lot #122: CHINESE CARVED & PAINTED WOOD FIGURE OF A PRAYING BODHISATTVA ON LOTUS BASE

Height: 14 in.

Estimate: \$300 - \$500



Lot #123: NEW GUINEA SHELL-MOUNTED PAINTED WOOD MASK

Dimensions: 33 in. x 10 in.

Estimate: \$200 - \$400



Lot #124: NEW GUINEA SHELL-MOUNTED WOOD MASK

Dimensions: 21 1/2 in. x 6 1/2 in.

Estimate: \$100 - \$200



Lot #125: ANIMAL SKULL WITH RINGED HORNS

Height: 43 in.

Estimate: \$175 - \$225



Lot #126: "MOCKING OF CHRIST," ITALIAN SCHOOL

Oil on canvas laid down on artist board. Sight: 10 5/8 in. x 8 in.

Estimate: \$400 - \$600



Lot #127: "CHRIST IN THE TEMPLE"

Oil on canvas, Sight: 24 in. x 19 3/4 in.

Estimate: \$300 - \$500



Lot #128: SPANISH COLONIAL SCHOOL, NINETEENTH CENTURY

St. Dominic walking on the water, holding a monstrance and statue of the Virgin, oil on canvas laid down on panel.

Dimensions: 23 1/2 in. x 17 1/2 in.

Estimate: \$800 - \$1,200



Lot #129: TWO SPANISH COLONIAL CARVED & PAINTED FIGURES: VIRGIN AND THE VIRGIN HOLDING THE DEAD CHRIST

Together with a Venetian carved and painted figure of a guitar player; and a Spanish Colonial painting on tin of

Christ.

Heights: 13 1/2 in., 14 1/4 in. and 18 1/2 in.

Estimate: \$600 - \$800



Lot #130: GREEK ICON OF PRESENTATION IN TEMPLE

On gessoed panel, unframed.

Dimensions: 16 in. x 12 in.

Estimate: \$200 - \$400



Lot #131: BAROQUE STYLE CAST STONE SWAN'S NECK OVER DOOR PEDIMENT

Height: 15 in., Width: 70 in.

Estimate: \$300 - \$500



Lot #132: SET OF FOUR WHITE-PAINTED URN-FORM FINIALS WITH ACORN KNOBS AND SQUARE BASES

Height: 19 in., Width: 10 3/4 in.

Estimate: \$800 - \$1,200



Lot #133: PAIR OF WHITE-STAINED PINE PEDESTALS WITH STEPPED RING BASES

Height: 39 3/4 in., Diameter: 14 3/4 in.

Estimate: \$200 - \$400



Lot #134: SET OF FOUR STRIPPED IRON HOOP-BACK SIDE CHAIRS WITH GRILL SEATS AND CURULE LEGS.

Estimate: \$1,000 - \$1,500



**Lot #135: VERDIGRIS-PAINTED RECTANGULAR
WROUGHT IRON PATIO TABLE AND EIGHT SIDE
CHAIRS WITH MOLDED "RUSH" SEATS**

Height of table: 30 in., Width: 4 Ft. 1/2 in., Depth: 32
1/2 in.

Estimate: \$700 - \$900



**Lot #136: PAIR OF BLUE-PAINTED ADIRONDACK-
TYPE ARMCHAIRS**

With arched slat back, broad armrests and S-form
seat.

Estimate: \$400 - \$600

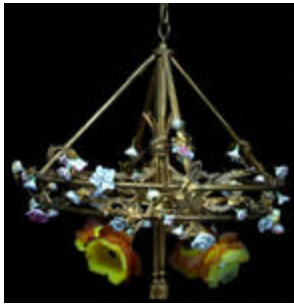


Lot #137: PAINTED WOOD CROQUET SET

Comprising: 8 mallets, 7 balls, 8 metal hoops, 2 sticks
and blue-painted stand.

Height of stand: 28 1/2 in., Width: 21 in.

Estimate: \$200 - \$400



**Lot #138: LOUIS XVI STYLE PORCELAIN &
FROSTED GLASS MOUNTED GILT-BRONZE FOUR
LIGHT CHANDELIER**

Height: 23 in., Width: 19 in.

Estimate: \$800 - \$1,200



**Lot #139: THREE LOUIS XV STYLE TWO LIGHT
WALL APPLIQUES**

Height: 14 14/ in.

Estimate: \$200 - \$400



Lot #140: PAIR OF ITALIAN ROCOCO GILT WALL LIGHTS

Height: 21 in., Width: 14 in.

Estimate: \$800 - \$1,200



Lot #141: LOUIS XVI STYLE PORCELAIN & FROSTED GLASS MOUNTED SIX LIGHT CHANDELIER

Height: 17 1/2 in., Width: 17 1/2 in.

Estimate: \$800 - \$1,200



Lot #142: PAIR OF GEORGE III STYLE CUT GLASS & SKY BLUE OPALESCENT GLASS FIVE LIGHT WALL APPLIQUES

Height: 26 in., Width: 18 in.

Estimate: \$300 - \$500



Lot #143: PAIR OF LOUIS XV STYLE CUT-GLASS & GILT BRONZE FIVE 7114 13 LIGHT CANDELABRA

Height: 37 1/4 in.

Estimate: \$700 - \$900



Lot #144: AMERICAN TOLE PAINTED SIX LIGHT CHANDELIER

Height: 23 in., Width: 28 in.

Estimate: \$300 - \$500



**Lot #145: LOUIS XV STYLE BRONZE & GILT BRONZE
"WELL HEAD" CHANDELIER**

Height: 37 in., Width: 21 in.

Estimate: \$1,500 - \$2,000



**Lot #146: PAIR OF SWEDISH NEOCLASSICAL STYLE CUT
GLASS, GILT METAL & MARBLE THREE-LIGHT
CANDELABRA**

Height: 31 in.

Estimate: \$1,000 - \$1,500



**Lot #147: GEORGE III STYLE CUT GLASS SEVEN-LIGHT
CHANDELIER**

The stem supporting a drop-hung canopy, spiral twist arms joined by swags.

Estimate: \$600 - \$800



**Lot #148: RENAISSANCE STYLE WROUGHT IRON EIGHT
LIGHT FLOOR
CHANDELIER**

With two graduated corona-form rings on spiral twist stem.
Height: 6 Ft. 8 in., Diameter: 19 1/2 in.

Estimate: \$700 - \$900

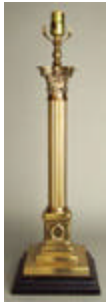


Lot #149: LOUIS XV STYLE COLORED GLASS MOUNTED WROUGHT IRON TEN-LIGHT CHANDELIER

The pear-form skeletal frame supporting double scroll light arms and decorative arms hung with green and purple grape pendants.

Height: 36 in., Width: 30 in.

Estimate: \$800 - \$1,200



Lot #150: EMPIRE STYLE BRASS CORINTHIAN COLUMN-FORM LAMP

With reeded shaft, wreath applied pedestal and stepped base. Height to top of column: 20 1/4 in.

Estimate: \$250 - \$350



Lot #151: ROCOCO STYLE VENETIAN GLASS SIX LIGHT CHANDELIER

The turned stem with bowl, daffodil stems and spiral twist arms with broad quilted candle bowls.

Height: Approx. 4 Ft. 4 in., Diameter: 34 in..

Estimate: \$1,000 - \$1,500



Lot #152: LOUIS XV STYLE CUT-GLASS MOUNTED GILT BRONZE TWENTY-FOUR LIGHT CHANDELIER

The reeded stem surmounted by a decorative spray and supporting two graduated tiers of leaf-case S-scroll arms joined by swags, centering a globe pendant.

Height: 36 in., Width: 32 in.

Estimate: \$1,800 - \$2,200



Lot #153: NEOCLASSICAL STYLE COLORED GLASS MOUNTED GILT METAL SIX LIGHT CHANDELIER

Approx. Height: 24 in., Diameter: 23 1/2 in.

Estimate: \$1,500 - \$2,000



Lot #154: PAIR OF LOUIS XVI STYLE SILVER-PLATED BRASS THREE-LIGHT SMALL BOUILLOTTE LAMPS

Each with dished base, fluted stem, trefoil drop pan and adjustable tole shade.

Height: 19 1/2 in.

Estimate: \$700 - \$900



Lot #155: LOUIS XVI STYLE PORCELAIN AND GLASS MOUNTED GILT METAL FOUR LIGHT CHANDELIER

Height: 26 1/8 in., Width: 18 3/4 in.

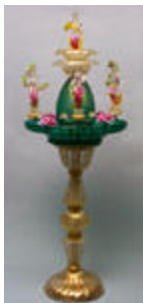
Estimate: \$800 - \$1,200



Lot #156: LOUIS XVI STYLE PORCELAIN MOUNTED GILT BRONZE FOUR LIGHT CHANDELIER

Height: 28 in., Width: 18 1/2 in.

Estimate: \$700 - \$900



Lot #157: VENETIAN GLASS FOUNTAIN

Height: approx. 5 ft. 2 in., Diameter: 24 in.

Estimate: \$1,000 - \$1,500



Lot #158: LOUIS XV STYLE GILT BRONZE THREE FOLD FIRE SCREEN

Height: 38 in. Width of center panel: 35 in.

Estimate: \$600 - \$800



Lot #159: PAIR OF BAROQUE STYLE GILT-BRONZE CHENETS

Height: 17 in., Width: 11 3/4 in.

Estimate: \$200 - \$400



Lot #160: PAIR OF NEOCLASSICAL-STYLE BRASS ANDIRONS

Each ribbon bound stem with flambeau urn.

Height: 19 1/2 in.

Estimate: \$250 - \$350

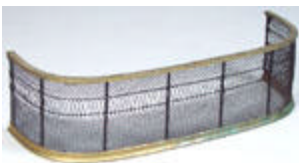


Lot #161: BAROQUE-STYLE BRASS BRISEE FIRE SCREEN

The winged griffin base supporting the fold out screen.

Height: 25 1/4 in.

Estimate: \$200 - \$400



Lot #162: BRASS-MOUNTED WIREWORK D-SHAPE FIRE FENDER

With pierced interlaced arch and diamond panels.

Height: 8 1/2 in., Width: 29 1/2 in.

Estimate: \$300 - \$500



Lot #163: PAIR OF GEORGE III STYLE BRASS PLATED ANDIRONS WITH BALL FINIALS AND A FENDER.

Height of andirons: 23 in., Length of fender: 4 Ft. 1in.

Estimate: \$150 - \$250



Lot #164: PAIR OF FEDERAL-STYLE BRASS LEMON-TOP ANDIRONS

With octagonal stems.

Height: 19 1/2 in.

Estimate: \$300 - \$500



Lot #165: PENNSYLVANIA DUTCH HAND-COLORED PRINTED FRAKTUR

Inscribed in ink and dated 1854.

Dimensions: 8 1/4 in. x 6 1/4 in.

Estimate: \$150 - \$250



Lot #166: FEDERAL CARVED GILTWOOD PIER MIRROR WITH EGLOMISE PANEL

Painted with three American ships in a choppy sea beneath ball-applied cornice.

Dimensions: 32 1/2 in. x 22 1/2 in.

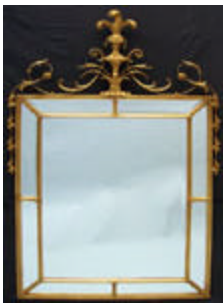
Estimate: \$800 - \$1,200



Lot #167: PAIR OF FEDERAL CARVED GILTWOOD OVERMANTEL MIRRORS

Dimensions: 67 in. x 41 1/2 in.

Estimate: \$3,000 - \$5,000



Lot #168: PAIR OF GEORGE III STYLE CARVED GILTWOOD MIRRORS

Dimensions: 5 Ft. 8 in. x 41 in.

Estimate: \$1,000 - \$1,500



**Lot #169: LOUIS XV STYLE CARVED GILTWOOD
OVERMANTLE MIRROR**

The shaped quatrefoil plate with flame and scrolling foliate frame incorporating dragon supported bracket, pierced wing and flower-carved crest above lattice and swags.

Dimensions: 4 ft. 2 in. x 4 ft. 8 in. **Estimate: \$800 - \$1,200**



Lot #170: ITALIAN ROCOCO GILTWOOD SMALL MIRROR

The pierced frame carved with foliate scroll work.

Dimensions: 21 in. x 12 in.

Estimate: \$400 - \$600



**Lot #171: VICTORIAN CARVED GILTWOOD & GESSO
OVAL MIRROR**

The beveled plate within reeded cavetto and pomegranate and berry raised border.

Dimensions: 40 in. x 36 in.

Estimate: \$200 - \$400



Lot #172: ITALIAN CARVED GILTWOOD SMALL MIRROR

With subsidiary plates and flower-carved corners.

Dimensions: 16 in. x 14 1/2 in.

Estimate: \$400 - \$600



**Lot #173: WILLIAM IV ROSEWOOD & PARCEL GILT
CONSOLE TABLE**

Height: 36 3/4 in., Width: 4 Ft. 1 in., Depth: 13 1/4 in.

Estimate: \$1,000 - \$1,500



Lot #174: REGENCY BRASS-MOUNTED BLACK PAINTED ARMCHAIR

The rope twist top rail above rosettes, a cane seat and sabre legs.

Estimate: \$400 - \$600



Lot #175: REGENCY INLAID MAHOGANY FIVE SHELF WHATNOT

The frieze drawer with brass pulls and ivory keyhole escutcheon, above four galleried shelves.

Height: 47 3/4 in., Width: 18 3/4 in., Depth: 14 1/2 in.

Estimate: \$1,200 - \$1,800



Lot #176: REGENCY MAHOGANY BOW-FRONTED SIDEBOARD

The top with brass skirt rod and the arched kneehole front with silver drawer flanked by a door fitted with shaped molding bars and brass lion head ring drop handles, on partially ring-turned legs.

Height: 36 in., Width: 5 Ft. 4 in., Depth: 24 in.

Estimate: \$4,000 - \$6,000



Lot #177: EMPIRE GILT BRONZE MOUNTED MAHOGANY DEMI-LUNE GAMES TABLE

The D-shaped top opening to a green baize lined playing surface above a frieze applied with Medusa head, anthemion and star mounts, with rear pull-out support on square tapered legs, lacking box sabots.

Height: 29 in., Width: 43 1/2 in., Depth: 21 1/2 in.

Estimate: \$1,800 - \$2,200



Lot #178: EMPIRE STYLE CARVED GILTWOOD SETTEE

With roll-over top rail and the reeded arms on scrolling acanthus supports; the concave-fronted fluted seat raised on leaf-carved and fluted legs.

Length: 5 Ft. 10 in.

Estimate: \$2,000 - \$3,000



**Lot #179: EMPIRE-STYLE GILT-METAL MOUNTED
MAHOGANY CENTER TABLE**

Height: 28 in., Diameter: 36 in.

Estimate: \$2,000 - \$2,500



**Lot #180: GEORGE III INLAID MAHOGANY SMALL BOW -
FRONT CHEST OF THREE DRAWERS**

With cock beading, ebonized band and bracket feet.

Height: 33 1/4 in., Width: 36 in., Depth: 18 1/2 in.

Estimate: \$900 - \$1,100



**Lot #181: GEORGE III STYLE CARVED MAHOGANY
LIBRARY ARMCHAIR**

Estimate: \$600 - \$800

Lot #182: INTENTIONALLY LEFT BLANK

Estimate:



Lot #183: WILLIAM & MARY OAK SIDE TABLE

The frieze drawer with brass tear-drop pulls on turned and block legs.

Estimate: \$700 - \$900



Lot #184: PENNSYLVANIA DUTCH PAINTED BLUE-GROUND BLANKET CHEST WITH TWO DRAWERS

Centered with a breakarch panel of a rearing horse and tulip panels, on bracket feet.

Height: 27 1/4 in., Width: 4 Ft. 3 1/4 in., Depth: 22 3/4 in.

Estimate: \$1,000 - \$1,500



Lot #185: FEDERAL PAINTED MAPLE LONG CASE CLOCK

Height: 81 3/4 in.

Estimate: \$1,000 - \$1,500



Lot #186: AMERICAN CHIPPENDALE BLACK-PAINTED SIDE CHAIR WITH RUSH SEAT

Estimate: \$600 - \$800



Lot #187: ASSEMBLED SET OF SIX MAPLE GRAINED FEDERAL PAINTED FANCY CHAIRS

Comprising: two armchairs and four side chairs, all with rush seats.

Estimate: \$2,000 - \$4,000



Lot #188: PENNSYLVANIA CHIPPENDALE CARVED WALNUT SIDE CHAIR

With shell-carved crest rail and knees, solid urn splat, drop-in seat, cabriole legs and trifold feet.

Estimate: \$2,000 - \$4,000



Lot #189: AMERICAN CHIPPENDALE WALNUT TILT-TOP TEA TABLE

With birdcage support and column and ball pedestal.
Height: 28 3/4 in., Diameter: 20 1/2 in.

Estimate: \$2,000 - \$3,000



Lot #190: PAIR OF FEDERAL CARVED MAHOGANY SHIELD-BACK SIDE CHAIRS

Carved with drapery swags, on reeded logs.

Estimate: \$800 - \$1,200



Lot #191: NEWPORT CHIPPENDALE-STYLE MAHOGANY BLOCK FRONT CHEST-ON-CHEST

The swan's neck crest applied with rosettes above three short shell-carved drawers and three long drawers fitted with brass bat wing drop handles; the lower part containing four drawers and raised on claw and ball feet.

Height: 6 Ft. 9 in., Width: 37 1/2 in., Depth: 20 1/2 in.

Estimate: \$2,000 - \$4,000



Lot #192: GEORGE IV SILVER SALVER

Rebecca Eames and Edward Barnard, London, 1826; with engraved surface armorial beneath the motto "Clarior e Tenebris."

Diameter: 14 1/2 in.

Estimate: \$1,000 - \$1,500



Lot #193: TOWLE SILVER FLATWARE LUNCH SERVICE FOR EIGHT IN THE "CANDLELIGHT" PATTERN

Together with serving pieces and assorted other pieces.
Approx. 86 pcs

Estimate: \$600 - \$800



Lot #194: AMERICAN SILVER PLATED HOT WATER KETTLE

Height: 19 in.

Estimate: \$100 - \$150



Lot #195: MEXICAN SILVER SIX PIECE TEA AND COFFEE SERVICE AND MATCHING TRAY

Comprising kettle on warming stand, three pots with wood handles, waste pail, creamer, covered sugar bowl and a 29 3/4 in. wood handled tray, of quatrefoil section with low fluted rims and S-scroll knobs.

Height of kettle: 14 1/2 in.

Estimate: \$400 - \$600



Lot #196: PEWTER TEAPOT BY G. RICHARDSON AND AN ENGLISH BRASS WATERING CAN

Heights: 7 1/8 in. and 10 1/2 in.

Estimate: \$300 - \$500



Lot #197: PAIR OF ENGLISH SILVER PLATED CANDELSTICKS WITH REMOVEABLE THREE-LIGHT ARM SECTION

Height: 20 1/2 in.

Estimate: \$200 - \$400



Lot #198: MISCELLANEOUS GROUP OF AMERICAN SILVER TABLE ARTICLES

Including Gorham candlesticks and candelabrum.

Estimate: \$200 - \$250



Lot #199: SIX AMERICAN SILVER TABLE ARTICLES AND TWO SILVER RIMMED CHINA PLATES

Comprising: a Whiting 12 1/4 in. bread tray; sweetmeat stand with arched handle and pierced surface; Gorham 6 in. dish in the "Frontenac" pattern, 6 1/4 in. butter plate, Towle 4 1/2 in. Revere bowl; Reed & Barton 8 3/4 in. sq. reeded plate; and 2 Wallace silver rimmed Castleton china plates.

Estimate: \$200 - \$300



Lot #200: GROUP OF SILVER SMALL TABLE ARTICLES

Including pieces by Gorham, Wallace and English & Continental makers.

Estimate: \$200 - \$300