

Lots 1 - 100



Lot #1: AMERICAN HOOKED CARPET

The chocolate ground with floral tiles.
Dimensions: 141 in. x 105 in.

Estimate: \$300 - \$500



Lot #2: MESHED MEDALLION CARPET

The oblong indigo medallion and spandrels within primary indigo border and two guard borders.

Dimensions: Approx. 10 Ft. x 12 Ft. 8 in.

Estimate: \$1,000 - \$1,500



Lot #3: KASHAM MEDALLION CARPET

The medallion on an indigo field within primary border and two guard borders.

Dimensions: Approx. 9 ft, 10 in x 12 ft 4 in

Estimate: \$1,500 - \$2,000



Lot #4: HERIZ CARPET

The ivory, rose and indigo medallion anchored to a rose field with ivory stepped spandrels; primary indigo border and two guard borders.

Dimensions: 11 Ft. x 8 Ft. 8 in.

Estimate: \$1,200 - \$1,500



Lot #5: PAKISTANI BAKARA TAN GROUND CARPET

The tan field with three rows of diamond medallions, within multiple borders.

Estimate: \$400 - \$600



Lot #6: AUBUSSON STYLE NEEDLEWORK CARPET

The tan and cafe au lait shaped medallion on ivory field worked with garlands.

Dimensions: Approx. 9 Ft. 10 in. x 8 Ft.

Estimate: \$700 - \$900



Lot #7: AUBUSSON STYLE NEEDLEWORK CARPET

The oval floral medallion on ivory field worked with floral clusters, narrow cafe au lait border.

Dimensions: Approx. 9 Ft. 10 in. x 7 Ft. 6 in.

Estimate: \$600 - \$800



Lot #8: KAZVIN CARPET

The ivory stepped medallion anchored to a rose field, ivory primary and six guard borders.

Dimensions: 9 Ft. 8 in. x 7 Ft.

Estimate: \$450 - \$650



Lot #9: SAROUK CARPET

The burgundy field within indigo primary border and four guard borders.

Dimensions: Approx. 9 Ft. 6 in. x 7 Ft. 11 in.

Estimate: \$1,200 - \$1,500



Lot #10: HERIZ CARPET

The indigo medallion on a burgundy ground and ivory spandrels, primary indigo serrated leaf border.

Dimensions: Approx. 7 Ft. 6 in. x 4 Ft. 6 in.

Estimate: \$500 - \$700



Lot #11: HAMADAN RUG

The midnight blue field within serrated leaf rose ground border and five guard border.

Dimensions: Approx. 6 Ft. 8 in. x 4 Ft. 3 in.

Estimate: \$250 - \$350



Lot #12: UZBEK KAZAK RUG

The rose field with three stylized floral medallions within primary ivory border and two blue guard borders.

Dimensions: Approx. 6 Ft. 4 in. x 4 Ft. 4 in.

Estimate: \$350 - \$450



Lot #13: PERSIAN SILK MEDALLION CARPET

The lobed burgundy medallion anchored to an indigo field within primary ivory border and six guard border.

Dimensions: Approx. 18 Ft. 5 in. x 5 Ft. 1 in.

Estimate: \$2,500 - \$3,500



Lot #14: HAMADAN RUNNER

The cafe au lait field with one rose and two indigo medallions within burgundy flower head border.

Dimensions: Approx. 11 ft 1 in x 3 ft 11 in

Estimate: \$500 - \$700



Lot #15: MUSEL RUNNER

The indigo field with three stepped brick medallions, primary tan zig zag border and two guard borders.

Dimensions: Approx. 8 Ft. 8 in. x 40 in.

Estimate: \$350 - \$450



Lot #16: NORTHWEST PERSIAN RUNNER

The rose field worked with eight ivory or blue stylized pinecone medallions, primary blue border and two guard borders.

Dimensions: Approx. 8 Ft. 11 in. x 33 in.

Estimate: \$400 - \$600



Lot #17: "THE TREE OF LIFE"

Hand colored lithograph published by J. Baillie, 1846, in tiger grained maple frame; together with a needlework sampler in bird's eye maple frame.

Framed: 16 1/4 in. x 12 1/4 in. and 17 in. x 17 in.

Estimate: \$300 - \$500



Lot #18: AMERICAN WATERCOLOR THEOREM PAINTING

Showing a bird above fruit-filled basket, in giltwood frame.

Sight: 13 1/2 in. x 16 1/2 in.

Estimate: \$400 - \$600



Lot #19: PRIMITIVE FARM PAINTING, LATE NINETEENTH CENTURY

Oil on canvas, 24 in. x 34 in., framed.

Estimate: \$300 - \$500



Lot #20: AMERICAN PRIMITIVE SCHOOL, LATE NINETEENTH CENTURY

Watercolor on paper, 22 1/2 in x 28 in. (sheet), framed under glass, inscribed in pencil, "Farm von Herrn F. Adolph Sprecher. Town Troy. Wis."

Sheet: 22 1/2 in. x 28 in.

Estimate: \$3,000 - \$5,000



Lot #21: GROUP OF FOUR CARVED PINE FIGURE GROUPS

Comprising: Two boxers; two men hauling a barrel, a bear hugging a huntsman with rifle, and figure at amusement park weight machine using a mallet in the shape of Adolph Hitler's head .

Heights: 6 in. to 18 in., Lengths: 4 1/4 in. to 13 in.

Estimate: \$300 - \$500



Lot #22: TWO AMERICAN CARVED FIGURES, ONE OF A PENGUIN, THE OTHER AN EAGLE

Height of each: 19 3/4 in.

Estimate: \$200 - \$300



Lot #23: PAINTED WOOD HANGING OF A RAINBOW TROUT

Length: 36 in.

Estimate: \$200 - \$400



Lot #24: BLACK-GROUND WOODEN BOWL PAINTED WITH A BAND OF FRUIT

Diameter: 17 in.

Estimate: \$200 - \$400



Lot #25: AMERICAN CARVED & PAINTED WOOD FIGURE OF A NINETEENTH CENTURY SEAMAN IN TOP HAT, HOLDING A TANKARD

On green stepped base.
Height: 34 in., Width: 12 1/4 in.
Estimate: \$200 - \$400



Lot #26: BONE MOUNTED WATCH HUTCH

With stepped top, watch door and base drawer.
Height: 10 1/4 in., Width: 7 in., Depth: 4 1/8 in.
Estimate: \$700 - \$900



Lot #27: FEDERAL STYLE BLACK PAINTED & GILT COMPOSITION EAGLE WALL BRACKET

Height: 11 1/2 in., Width: 9 1/2 in.
Estimate: \$300 - \$500



Lot #28: STAINED PINEWOOD ACCORDIAN ACTION WALL COAT RACK

The support with half round bobbins.
Length: 36 in.
Estimate: \$300 - \$500



Lot #29: AMERICAN FOLK ART CARVED & PAINTED WOOD FIGURE OF A LADY WITH MUFF

Length: 13 1/2 in.
Estimate: \$400 - \$600



Lot #30: TWO AMERICAN MILITARY ARTICLES

Comprising: a brass mounted metal crescent-form box and a powder horn.

Lengths: 6 1/4 in. and 11 1/2 in.

Estimate: \$150 - \$250



Lot #31: AMERICAN CARVED GILTWOOD EAGLE

Carved front and back, with raised wings painted talons.

Height: 17 1/2 in., Wingspan: 34 in.

Estimate: \$300 - \$400



Lot #32: CARVED AND PAINTED TRADE SIGN: "THE GUNNER"

With serpentine crest, painted with a ships deck and relief applied with a sailor manning a cannon.

Dimensions: 40 1/4 in. x 33 1/4 in.

Estimate: \$400 - \$600



Lot #33: TWO FIGURES OF SNAKES

One carved wood of coiled form, the other a metal serpentine viper.

Height: 6 1/4 in., Length of longer: 16 3/4 in.

Estimate: \$200 - \$300

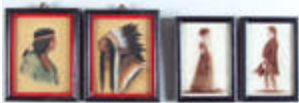


Lot #34: CARVED WOOD HANGING FIGURE OF A MERMAID

With long hair, raised arms and coiled tail.

Height: 13 in., Width: 30 1/4 in.

Estimate: \$200 - \$400



Lot #35: PAIR OF PORTRAITS OF A CHIEF IN HEADRESS AND A SQUAW

Watercolors, one initialed C.D. and dated '09 in ebonized and red Japan frames; together with a pair of framed photographs of Adam and Marie Magdale Briches.

Dimensions: 7 in. x 5 3/4 in. and 6 3/4 in. x 4 3/4 in.

Estimate: \$100 - \$150



Lot #36: "VIEW OF MOUNT VERNON"

Watercolor, signed Gertrude Fletcher and inscribed on reverse.

Sight: 5 1/4 in. x 7 in.

Estimate: \$80 - \$120



Lot #37: ENGLISH OAK HANGING SINGLE DOOR CABINET AND A FRENCH PROVINCIAL OAK TABLE DE CHEVET

The table with shelf and angular cabriole legs.

Heights: 20 in. and 27 in., Widths: 18 1/4 in. and 15 in.,

Depths: 9 in. and 12 1/2 in.

Estimate: \$500 - \$700



Lot #38: ENGLISH CIRCULAR TOP PINE TAVERN TABLE AND A PINE BEDSIDE STAND WITH A DRAWER AND A SHELF

Height of tavern table: 29 in., Diameter: 27 1/2 in.

Estimate: \$400 - \$600



Lot #39: ENGLISH PINE RECTANGULAR TOP KITCHEN TABLE

On round, tapered legs.

Height: 29 1/2 in., Width: 4 Ft. 1 in., Depth: 24 in.

Estimate: \$400 - \$600



Lot #40: PALE BLUE-PAINTED WORK TABLE

With 3/4 gallery, frieze drawer and shelf.

Height: 34 in., Width: 39 1/2 in., Depth: 19 in.

Estimate: \$200 - \$400



Lot #41: SMALL PINE SIDE CABINET

Enclosed by a pair of paneled doors and raised on block supports.

Height: 39 1/2 in., Width: 29 1/2 in., Depth: 19 1/2 in.

Estimate: \$300 - \$500



Lot #42: AMERICAN STAINED POPLAR HANGING CORNER CABINET

With scalloped crest and apron, enclosed by a glass door.

Height: 26 1/2 in., Width: 24 3/4 in., Depth: 15 1/2 in.

Estimate: \$300 - \$500



Lot #43: GEORGE I OAK MINIATURE BLANKET CHEST

With double fielded panels, brass bat's wing lock plates and a base drawer.

Height: 18 3/4 in., Width: 28 in., Depth: 12 1/4 in.

Estimate: \$500 - \$700



Lot #44: CONTINENTAL RED PAINTED DOME TOP BLANKET CHEST

With wrought iron knob and drop carrying handles.

Height: 25 in., Width: 42 3/4 in., Depth: 23 in.

Estimate: \$300 - \$500



Lot #45: AMERICAN FEDERAL MAHOGANY FOUR SHELF WHATNOT

Height: 59 1/2 in., Width: 25 in., Depth: 15 1/2 in.

Estimate: \$700 - \$900



Lot #46: FEDERAL FOUR POSTER BEDSTEAD in GREEN PAINT

With floral fluted posts joined at the head by a low pitched board, turned legs.

Provenance: The Andy Warhol Collection, Sotheby's, New York, Lot 3190.

Height: 6 Ft. 8 1/2 in., Width: 4 Ft. 4 in., Length: approx. 6 Ft. 10 in.

Estimate: \$1,500 - \$2,500



Lot #47: PAIR OF LATE GEORGE III STYLE CARVED MAHOGANY SIDE CHAIRS

Estimate: \$600 - \$800



Lot #48: LOUIS XVI STYLE GILT METAL MOUNTED BLACK LACQUER BONHEUR DU JOUR

Height: 4 Ft., Width: 30 1/2 in., Depth: 18 in.

Estimate: \$1,500 - \$2,500



Lot #49: QUEEN ANNE CHERRY HIGHBOY

The swan's neck pediment above three short drawers centered by a shell and three long drawers; the stand with one long and three short drawers, on cabriole legs.

Height: 7 Ft. 1 in., Width: 37 in., Depth: 21 in.

Estimate: \$5,000 - \$7,000



Lot #50: GEORGE III MAHOGANY SLANT-FRONT DESK

Height: 42 1/2 in., Width: 36 1/2 in.

Estimate: \$1,000 - \$1,500



Lot #51: LOUIS XV STYLE KINGWOOD TABLE EN CHIFFONIERE

The serpentine fronted Carrara marble top above three drawers with foliate cast gilt metal key escutcheons, raised on molded legs joined by a cross banded shelf.

Height: 25 in., Width: 17 1/4 in., Depth: 11 3/4 in.

Estimate: \$1,500 - \$2,500 .



Lot #52: CHIPPENDALE MAHOGANY CHEST-ON-CHEST, POSSIBLY NEW YORK

The molded cornice above three short and three long molded drawers fitted with brass bats wing drop handles flanked by chamfered fluted corners, the lower part containing four long drawers above a gadroon lower edge and raised on claw and ball feet.

Height: 80 in., Width: 50 1/2 in., Depth: 25 in.

Estimate: \$2,000 - \$3,000



Lot #53: KOREAN STAINED ASH TONSU

The front with drawers, sliding doors and hinged doors.

Height 40 inches, width 38 1/4 inches, depth 20 1/2 inches.

Estimate: \$300 - \$500



Lot #54: FRENCH ART DECO ZEBRAWOOD INLAID & PARCEL GILT ARMOIRE

Height: 73 3/4 in., Width: 45 1/2 in.

Estimate: \$2,000 - \$3,000



Lot #55: WILLIAM IV MAHOGANY LONG CASE CLOCK

Height: 84 in.

Estimate: \$2,000 - \$3,000



Lot #56: EDWARDIAN MARQUETRY INLAID SATINWOOD CABINET-ON-STAND

Height: 75 in., Width: 29 1/2 in., Depth: 15 1/2 in.

Estimate: \$4,000 - \$6,000



Lot #57: DUTCH DELFT BLUE & WHITE PLATE, ATTRIBUTED TO JACOBUS HALDER

Diameter: 11 1/2 in.

Estimate: \$300 - \$500



Lot #58: PAIR OF CHINESE EXPORT PORCELAIN ARMORIAL OCTAGONAL SOUP PLATES

With gilt tower on black and white shield enclosed by scroll work.

Width: 8 3/4 in.

Estimate: \$700 - \$900



Lot #59: STAFFORDSHIRE GRISAILLE TRANSFER-DECORATED MUG

Depicting figures amidst classical ruins.

Height: 6 in.

Estimate: \$200 - \$400



Lot #60: CHINESE EXPORT PORCELAIN FAMILLE ROSE MUG

With rondel of girl gazing out of a window.
Height: 5 1/8 in.

Estimate: \$400 - \$600



Lot #61: THREE ENGLISH COPPER LUSTRE RELIEF-MOLDED PITCHERS

Decorated with figures and dogs or flowers; together with an Imari 5 1/2 in. oval dish.
Heights: 5 1/4 in., 6 1/4 in. and 6 1/2 in.

Estimate: \$300 - \$500



Lot #62: THREE CONTINENTAL PORCELAIN TABLE ARTICLES

Lengths: 4 1/2 in., 6 in., & 8 1/4 in.

Estimate: \$200 - \$400



Lot #63: CONTINENTAL PORCELAIN FLORAL ENCRUSTED MANTEL CLOCK

Together with a pair of vases and a centerpiece. (4 pcs)
Heights: 14 1/2 in., 11 3/4 in., and 7 1/4 in., Length of centerpiece 9 3/4 in.

Estimate: \$600 - \$800



Lot #64: MEISSEN STYLE PORCELAIN GIRANDOLE MIRROR

Approx. 40 in. x 24 in.

Estimate: \$1,000 - \$1,500



Lot #65: SET OF SIX COALPORT CHINA "WENHAM" PATTERN DINNER PLATES

Diameter: 10 1/2 in.

Estimate: \$100 - \$150



**Lot #66: CHARLES X STYLE PARIS PORCELAIN
CENTERPIECE BASKET**

Height: 11 1/4 in.

Estimate: \$200 - \$400



**Lot #67: JACOB PETIT PARIS PORCELAIN CACHE-POT &
COVER**

With underglaze blue J.P. mark.

Height: 7 3/4 in., Width: 6 1/4 in.

Estimate: \$400 - \$600



**Lot #68: PAIR OF PORCELAIN COLUMNAR
CANDLESTICKS**

Together with a blue and white hexagonal vase in the "Pratts
Italian" pattern.

Heights: 9 1/2 in. and 6 3/4 in.

Estimate: \$150 - \$250



**Lot #69: ENGLISH ORANGE GLAZED CERAMIC BOTTLE
WITH SILVER PLATED
CHAINED STOPPER**

With gilt crysanthemum decoration, English registry number
79841.

Height: 8 1/2 in.

Estimate: \$100 - \$200



**Lot #70: PAIR OF FRENCH ENAMEL DECORATED
OPALINE VASES**

Height: 11 1/2 in.

Estimate: \$200 - \$400



**Lot #71: CHARLES X GILT DECORATED BLUE GROUND
BISQUE PORCELAIN
MANTLE CLOCK**

By Auguste Rolland, Paris; together with a pair of Paris porcelain vases.

Heights: 14 in. and 8 1/2 in.

Estimate: \$300 - \$500



**Lot #72: PAIR OF KANGXI STYLE BLUE & WHITE
PORCELAIN YEN YEN VASES**

Height: 24 in.

Estimate: \$150 - \$200



**Lot #73: DERBY PORCELAIN TWO-HANDLED FRUIT DISH
WITH ROSE AND
PANSY SPRIGS**

Together; with a Mottahedeh Chinese export-style porcelain tureen, cover and stand with gilt and blue eagle decoration.

Lengths: 12 1/2 in. and 16 in.

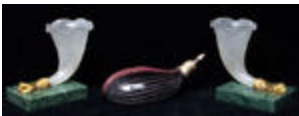
Estimate: \$200 - \$300



**Lot #74: FRENCH PINK OPALINE PUNCH BOWL, COVER &
STAND & NINE ASSEMBLED CUPS**

Height: 12 in., Width: 18 in.

Estimate: \$200 - \$300



**Lot #75: PAIR OF GILT METAL & FROSTED GLASS
CORNUCOPIA VASES**

Together with a striped glass tear-form scent bottle with silver-plated rim.

Height: 4 1/2 in., Lengths: 5 1/2 in. and 6 3/4 in.

Estimate: \$150 - \$250



Lot #76: PAIR OF CUT AMBER GLASS BOAT FORM SALTS

Height: 4 in., Width: 4 in.

Estimate: \$100 - \$200



Lot #77: PAIR OF CONTINENTAL CRANBERRY GLASS EWERS WITH SILVER PLATED RIMS & COVERS

Height: 7 1/2 in.

Estimate: \$200 - \$400



Lot #78: FRENCH GILT METAL MOUNTED OPALINE GLASS COFFRET

Signed "R. Noirot".

Height: 4 1/2 in., Width: 5 1/4 in.

Estimate: \$200 - \$300



Lot #79: AMUSING ENGLISH PRESSED GREEN GLASS CROWN FORM INKWELL AND COVER

Together with a French gilt metal mounted opaline glass small box.

Heights: 3 1/2 in. and 3 1/4 in., Widths: 3 3/4 in. and 4 1/4 in.

Estimate: \$200 - \$400



Lot #80: FRENCH GILT METAL MOUNTED OPALINE GLASS VASE

Height: 8 1/2 in.

Estimate: \$300 - \$500



Lot #81: AMERICAN SILVER LIDDED CUT GLASS JAR

Together with a glass scent bottle and heart shape d box with silver plated cover.

Heights: 2 7/8 in. to 4 3/8 in.

Estimate: \$100 - \$200



Lot #82: VICTORIAN WALNUT ARMCHAIR WITH TUFTED BACK

The bowed seat on turned legs ending in brass cup casters.

Estimate: \$400 - \$600



Lot #83: FRENCH PROVINCIAL CARVED OAK ARMOIRE

The double paneled foliate carved doors fitted with brass keyhole escutcheons.

Height: 6 Ft. 5 in., Width: 4 Ft. 6 in., Depth: 25 in.

Estimate: \$1,000 - \$1,500



Lot #84: GEORGE III STYLE PINWOOD BOOKCASE CABINET

With two twelve pane glazed doors above double paneled doors, flanked by canted fluted corners.

Height: 6 Ft. 1 in., Width: 4 Ft. 8 in., Depth of cornice: 20 1/2 in.

Estimate: \$1,500 - \$2,500



Lot #85: REGENCY MAHOGANY BUTLER'S TRAY ON FOLDING STAND

Height: 34 1/2 in., Width: 24 in.

Estimate: \$300 - \$500



Lot #86: SET OF EIGHT GEORGE III STYLE CARVED MAHOGANY SIDE CHAIRS

Estimate: \$3,000 - \$4,000



Lot #87: ENGLISH BRASS TWO-HANDLED TRAY ON STAINED WOOD STAND

On splayed legs joined by an x-stretcher.

Height: 23 in., Width: 22 3/4 in.

Estimate: \$500 - \$700



Lot #88: GEORGE III MAHOGANY LINEN PRESS

Height: 60 3/4 in., Width: 49 1/2 in.

Estimate: \$2,000 - \$4,000



Lot #89: BIEDERMEIER WALNUT BEDSIDE CABINET

Height: 29 3/4 in., Width: 15 1/2 in.

Estimate: \$300 - \$500



Lot #90: SET OF FOUR EMPIRE STYLE MAHOGANY & PARCEL GILT FAUTEUILS EN CABRIOLET

Estimate: \$2,000 - \$3,000



Lot #91: GEORGE III STYLE CARVED MAHOGANY LIBRARY ARMCHAIR
Estimate: \$600 - \$800



Lot #92: EMPIRE STYLE GILT METAL MOUNTED MAHOGANY PLANT STAND
Height: 33 3/4 in., Diameter: 21 1/2 in.
Estimate: \$800 - \$1,200



Lot #93: CHARLES X STYLE SIDE TABLE
The rectangular top on a frieze raised on x-form trestle supports joined by a turned stretcher.
Estimate: \$500 - \$700

Lot #94: INTENTIONALLY LEFT BLANK
Estimate:



Lot #95: REGENCY STYLE BOULLEWORK INLAID ROSEWOOD LOW TABLE
Height: 18 1/4 in., Width: 38 1/4 in.
Estimate: \$300 - \$500



Lot #96: LOUIS XVI STYLE BRASS-MOUNTED MAHOGANY ARMOIRE

The flat top cornice above a pair of grillwork doors fitted with corner buttons, the stand on turned legs.

Height: 6 Ft. 3 1/2 in., Width: 4 Ft. 7 1/2 in., Depth: 20 1/2 in.

Estimate: \$1,500 - \$2,500



Lot #97: REGENCE STYLE CARVED WALNUT SUITE OF SEAT FURNITURE WITH FIGURAL NEEDLEWORK UPHOLSTERY

Width of settee: 67 in.

Estimate: \$2,500 - \$3,500



Lot #98: SILVER PLATED OCCASIONAL TABLE

The circular top richly cast with floral clusters on lattice grounds, the stem on bell-form base and tripod feet.

Height: 29 3/4 in., Diameter: 24 in.

Estimate: \$800 - \$1,200



Lot #99: REGENCE PROVINCIAL STYLE WALNUT KNEEHOLE DESK

Height: 29 1/2 in., Width: 48 in., Depth: 32 3/4 in.

Estimate: \$1,000 - \$1,500



Lot #100: CHINOISERIE LACQUER LOW TABLE

Height: 15 1/2 in., Width: 42 1/4 in.

Estimate: \$600 - \$800