

Lots 201 - 210



Lot #201: GROUP OF SEVEN AMERICAN REED & BARTON SILVER PLATED ARTICLES

Together with an 1847 Rogers 19 in. well and tree platter and a trefoil dish. 9 pcs.
Estimate: \$100 - \$150



Lot #202: MISCELLANEOUS GROUP OF SILVER PLATED TABLE ARTICLES

Approx. 28 pcs.
Estimate: \$80 - \$120



Lot #203: MISCELLANEOUS GROUP OF SILVER PLATED TABLE ARTICLES

Approx. 16 pcs.
Estimate: \$100 - \$150



Lot #204: GROUP OF SILVER SPOONS

Comprising four Continental serving spoons, two with fiddle handles; three George III coffee spoons, W.S. maker, London, 1799; and four Richard Wallace coffee spoons; together with a black lacquer spoon rack.
Estimate: \$50 - \$75



Lot #205: AFTER J. GOULD & H.C. RICHTER

"Selasphorus Rufus" and "Selasphorus Scintilla", a pair of hand-colored lithographs printed by Hullmand & Walton.

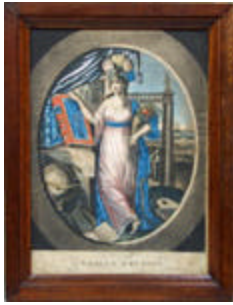
Sight: 20 in. x 14 in.
Estimate: \$800 - \$1,200



Lot #206: SIX BOTANICAL PRINTS AND "TWO CHERUBS," AFTER RAPHAEL

The largest after Basilius, a pair of hand-colored engravings after J. Pess, and three lithographs.

Framed: from 15 in. x 11 3/4 in. to 29 in. x 24 3/4 in.
Estimate: \$250 - \$350



**Lot #207: ENGLISH HAND COLORED ENGRAVING:
"EMBLEM OF EUROPE"**

Published April 20, 1800, in mahogany frame.

Height: 16 1/4 in. x 12 1/2 in.

Estimate: \$100 - \$200



Lot #208: GEORGE I SILKWORK PICTURE of a family with two girls holding masks and three attendants in a period frame.

Dimensions: 8 in. x 10 1/2 in.

Estimate: \$1,000 - \$1,500



Lot #209: CHARLES II STUMPWORK PICTURE

In a stained wood and parcel-gilt frame.

Dimensions: 13 1/4 in. x 17 1/4 in.

Estimate: \$1,000 - \$1,500



**Lot #210: CONTINENTAL WAX WORK BUST PORTRAIT OF
A LADY**

With plumed head dress, diaphanous blouse, contained in shadow box frame.

Dimensions overall: 11 1/4 in. x 9 in.

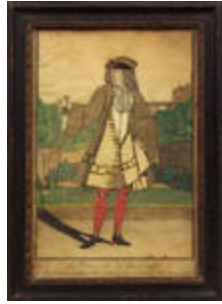
Estimate: \$700 - \$900



**Lot #211: PORTRAIT OF A FRENCH CADET FLANKED BY
BIRDS ON COLUMNS
SUPPORTING A HEART GARLAND**

The soldier with dates 1809-1866, watercolor. Framed: 10 3/4 x 9 1/4 in.

Estimate: \$100 - \$200



Lot #212: "LE PRINCE DE HESSE-CASSEL"

Eighteenth Century French hand-colored engraving with cloth-backed cut-away clothes.

Framed: 13 in. x 9 1/4 in.

Estimate: \$100 - \$200



Lot #213: "THE NORTH WINDOW"

Lithograph by Doris Hergil, signed in pencil and titled; together with a pair of Paris street scenes by Racoff, signed and dated '66 & '69.

Sight: 9 1/4 in. x 11 in. and 13 1/2 in. x 10 1/2 in.

Estimate: \$100 - \$200



Lot #214: TWO HAND-COLORED TOPOGRAPHICAL ENGRAVINGS:

"The Castle of the Glin, Limerick" and "Castle Corke." One bearing the date of 1600; bird's eye maple and parcel-gilt frames.

The plates: 14 1/4 in. x 11 1/2 in.

Estimate: \$200 - \$300



Lot #215: PAIR OF GERMAN REVERSE PRINTS ON GLASS: "ROMAN GIRL WITH MIRROR" AND "IN THE LILAC"

With 1891 Copyright of Franz Hanestaengl, after paintings by Centadhieset; together with a pair of French botanical reproductions.

Height: framed 15 1/2 in. x 11 1/2 in.

Estimate: \$150 - \$250



Lot #216: A PAIR OF FLORAL PAINTINGS

Indistinctly signed oil on canvas.

Dimensions: 34 in. x 28 in.

Estimate: \$1,200 - \$1,800



Lot #217: PORTRAIT OF A CHILD HOLDING A RED TULIP

In seventeenth century Flemish style, oil on canvas, 24

1/2 in. x 21 in., framed.

Estimate: \$500 - \$700



Lot #218: BUST PORTRAIT OF A GENTLEMAN

Oil on canvas, 30 in. x 25 in., initialed in border "J.B. px," bearing date 1717.

Estimate: \$700 - \$900



Lot #219: PORTRAIT OF A SEATED WOMAN WITH BOOK

American School Eighteenth Century, oil on canvas.
Dimensions: 39 1/2 in. x 30 in.

Estimate: \$800 - \$1,200



Lot #220: PORTRAIT OF A CHILD IN BLUE DRESS HOLDING A CAT

American School, oil on canvas.
Dimensions: 33 1/2 in. x 27 1/4 in.

Estimate: \$1,500 - \$2,500



Lot #221: PORTRAIT OF A GENTLEMAN WITH LETTER

British School, early Nineteenth Century, attributed to William Wells, oil on canvas.

Dimensions: 36 in. x 28 1/4 in.

Estimate: \$1,500 - \$2,500



Lot #222: PORTRAIT OF TYLER BRIGGS, M.D.

American, Nineteenth Century portrait, oil on canvas. Note:
Exhibited at the Brooklyn

Museum Fair, date unspecified, numbered 503.

Dimensions: 30 in. x 24 in.

Estimate: \$2,000 - \$3,000



Lot #223: BUST PORTRAIT OF "ELIZABETH"

Attributed to Shepard Alonzo Mount (American, 1804-1868);
oil on canvas, 24 in. x 20 3/4 in.; inscribed verso "painted by
S.A. Mount 1864." framed.

Estimate: \$1,000 - \$1,500



Lot #224: TWO PENCIL STUDIES

One of a couple dancing, the other of a cow; one inscribed in
pencil "W.S.M. August 16, '67", framed together; each, sight:
3 1/4 in. x 3 3/4 in.

Estimate: \$100 - \$200



Lot #225: ROWERS ON THE RIVER

Oil on panel 8 1/2 in. x 10 3/4 in., signed on verso, "1 sketch
in oils by Wm. S. Mount."

Height: 8 1/2 in. x 10 3/4 in.

Estimate: \$700 - \$900



**Lot #226: THE SHIP, "W.E. NORTON, BOSTON" IN
CHIPPY WATERS**

Oil on canvas, 12 in. x 16 in., bearing signature lower left,
"J.E. Buttersworth."

Estimate: \$800 - \$1,200



**Lot #227: LOUIS XV STYLE GILT BRONZE MOUNTED
TULIP & KINGWOOD BUREAU A CYLINDRE**

With three drawer superstructure above a tambour cylinder opening to a pull-out slide, drawers and pigeon holes, flanked by seated putti holding candle nozzle; the three drawer frieze on cabriole legs.

Height: 43 in., Width: 39 in.

Estimate: \$1,500 - \$2,500



**Lot #228: SET OF FOUR LOUIS XVI STYLE GREY
PAINTED LYRE-BACK CHAISES A LA REINE**

With oval cane seats and fluted legs.

Estimate: \$1,500 - \$2,000



**Lot #229: PAIR OF DIRECTOIRE GREY PAINTED
FAUTEUILS A LA REINE**

Each with rectangular back and seat fitted with floral needlework and with padded ornaments, raised on round tapered legs.

Estimate: \$2,000 - \$3,000



**Lot #230: LOUIS XVI STYLE CARVED GILTWOOD
VITRINE**

The D-shaped marble top above a floral garland carved frieze and a door with petal tip band, opening to a mirror-backed interior and carved with a music trophy.

Height: 4 Ft. 1 in., Width: 40 in., Depth: 16 in.

Estimate: \$1,000 - \$1,500



**Lot #231: PAIR OF LOUIS XV STYLE CARVED WALNUT
FAUTEUILS EN**

CABRIOLET AND FOUR MATCHING CHAISES

Each cartouche back with shell and foliate-carved crest, the serpentine seats on leaf-carved cabriole legs.

Estimate: \$1,200 - \$1,500



**Lot #232: STEINWAY & SONS MAHOGANY GRAND PIANO
IN A LOUIS XV STYLE CASE**

Together with a piano bench.

Approx. 69 in. long

Estimate: \$5,000 - \$7,000



**Lot #232A: ITALIAN NEOCLASSICAL INLAID WALNUT
CHEST-OF-DRAWERS**

The top with floral rondel; cross-banded drawers.

Height: 35 1/2 in., Width: 44 3/4 in., Depth: 20 1/4 in.

Estimate: \$2,000 - \$3,000



**Lot #233: BIEDERMEIER EBONIZED MOUNTED
SATINWOOD TWO-PART CABINET CHEST-OF-DRAWERS**

Height: 83 1/2 in., Width: 46 3/4 in., Depth: 23 1/2 in.

Estimate: \$2,500 - \$3,500



**Lot #233A: PAIR OF LOUIS XVI STYLE PORCELAIN
MOUNTED GILT METAL
SEVEN LIGHT CANDELABRA**

Height: 4 ft. 3 1/2 in., Width: 15 in.

Estimate: \$700 - \$900



**Lot #234: CHINESE CARVED PAINTED FIGURE OF THE
SEATED BUDDHA ,
MOUNTED ON A LAMP STAND**

Ming figure with green cloak.

Height of figure: 18 3/4 in.

Estimate: \$600 - \$800



Lot #235: PAIR OF LOUIS XV STYLE GILT BRONZE FOUR LIGHT CANDELABRA

With baluster stems, spiral twist arms and flower and leaf casting.

Height: 19 in.

Estimate: \$1,500 - \$2,500



Lot #236: EMPIRE STYLE GILT METAL THREE-LIGHT BOUILLOTTE LAMP

With leaf-cast stem, horn-form arms and adjustable tole shade.

Height: 30 in.

Estimate: \$400 - \$600



Lot #237: TWO PAIRS OF ENGLISH BRASS CANDLESTICKS WITH EJECTOR KNOBS

One on dome base; one of later date with dish base; together with a pair of French brass railroad coach lamps with plaque initialed P.L.M. and the reverse inscribed, "Gare La Roche Migenne," with glass shades.

Heights: 6 in., 7 in. and 12 3/4 in.

Estimate: \$250 - \$350



Lot #238: PAIR OF REGENCE STYLE BRASS CANDLESTICKS AND A PAIR OF BLACK PAINTED METAL CANDLESTICKS

Each pair electrified.

Heights: 11 1/2 in. and 14 in.

Estimate: \$250 - \$350



Lot #239: PAIR OF CHARLES X STYLE GILT BRONZE MOUNTED OPALINE VASES, MOUNTED AS LAMPS

Height: 19 1/4 in.

Estimate: \$150 - \$200



Lot #240: FRENCH GILT DECORATED FROSTED OPALINE GLASS VASE, MOUNTED AS A LAMP

Together with an opaline vase with gilt-metal handles.
Heights: 28 3/4 in. and 10 in.

Estimate: \$150 - \$200



Lot #241: PAIR OF CHARLES X STYLE GILT BRONZE CANDLESTICK LAMPS

Together with a pair of glass vase-form lamps with silver-plated filigree shades.

Heights: 19 in. and 14 3/4 in.

Estimate: \$200 - \$400



Lot #242: AMERICAN ART NOUVEAU LEADED GLASS SHADE ON JAPANESE BRONZE BASE

Height: 27 1/2 in., Width: 21 1/2 in.

Estimate: \$600 - \$800



Lot #243: BRASS MOUNTED STAINED WOOD FLOOR LAMP

Diameter: 14 in.

Estimate: \$200 - \$300



Lot #244: AMERICAN BRASS STUDENT'S LAMP WITH GLASS SHADE

With spindle stem, cylinder oil well and dome shade.
Height: 20 in.

Estimate: \$200 - \$400



Lot #245: PAIR OF SILVERED-METAL & CUT-GLASS LAMPS

Height: 26 1/2 in.

Estimate: \$60 - \$80



Lot #246: PAIR OF EMPIRE ORMOLU FIGURAL CANDLESTICKS

Height: 9 3/4 in.

Estimate: \$250 - \$350



Lot #247: JAPANESE KUTANIWARE OVOID VASE, MOUNTED AS A LAMP

Height: 33 3/4 in.

Estimate: \$400 - \$600



Lot #248: SATSUMAWARE MASSIVE TWO HANDLED VASE MOUNTED AS A LAMP

Height: of vase 35 1/4 in.

Estimate: \$700 - \$900



Lot #249: PAIR OF GLASS HUND-CAST GILT-METAL FIGURAL CANDLESTICKS ON MARBLE BASES

Cast as a couple holding hands beneath palm trees.

Height: 15 1/2 in.

Estimate: \$200 - \$400



Lot #250: CHINESE "FAMILLE ROSE" FIGURE MOUNTED ON A LAMP STAND

Together with a pair of Sevres-style bisque porcelain cherub-form candlesticks.

Heights: 15 3/4 in. & 8 1/2 in.

Estimate: \$100 - \$200



Lot #251: PAIR OF CUT GLASS LUSTRES

The scalloped rims hung with prisms.

Height: 8 1/2 in.

Estimate: \$200 - \$400



Lot #252: PAIR OF CHINESE MING STYLE BLUE, GREEN AND OCHRE GLAZED LARGE FIGURES OF FU DOGS

With forepaw resting on a puppy or a ball.

Height: 30 1/2 in., Width: 23 in.

Estimate: \$800 - \$1,200



Lot #253: GROUP OF FOUR CHINESE EXPORT PORCELAIN TABLE ARTICLES

Two cups with double twist handles, one with cover and one with monogram; a tea caddy with silver-plated rim (no cover) and a helmet-form creamer; together with a

pair of glazed bisque fu dogs.

Heights: 4 in. and 5 1/2 in.

Estimate: \$300 - \$600



Lot #254: PAIR OF CHINESE EXPORT PORCELAIN ARMORIAL PLATES

The double lion held shield above motto, "Auspicio Regis Senatus Anglia."

Diameter: 7 7/8 in.

Estimate: \$300 - \$500



Lot #255: THREE CHINESE EXPORT PORCELAIN ARTICLES

Comprising a tea pot with double twist handle, covered tea caddy with sepia decoration, and a Canton oval reticulated 10 5/8 in. platter.

Heights: 5 1/2 in. and 5 1/4 in.

Estimate: \$500 - \$700



Lot #256: CHINESE EXPORT PORCELAIN MYTHOLOGICAL PLATE:

"The Judgment of Paris."

Diameter: 9 in.

Estimate: \$500 - \$700



Lot #257: FRENCH PORCELAIN PARTIAL DINNER SERVICE

Approx. 52 pcs., including mostly plates and a few serving pieces

Estimate: \$500 - \$700



Lot #258: TWO ROYAL WORCESTER PORCELAIN ARTS & CRAFTS PITCHERS

One of fluted funnel shape with gilt branches, the other ovoid with pink and white daisies. Together with another. Marks Rd. 119478 and Rd. 29115.

Heights: 10 1/2 in. and 7 1/2 in.

Estimate: \$600 - \$800



**Lot #259: BERLIN PORCELAIN TWO HANDLED
RETICULATED BASKET**

Of chamfered rectangular outline, painted with floral cluster and insects.

Height: 12 in.

Estimate: \$300 - \$400



**Lot #260: SET OF TEN BERLIN PORCELAIN
IVORY-GLAZED DESSERT PLATES WITH
RETICULATED BORDERS**

With underglaze blue double sceptre mark.

Diameter: 7 3/4 in.

Estimate: \$150 - \$250



**Lot #261: NINE MEISSEN "BLUE ROSE" DINNER
PLATES AND A MATCHING
PLATTER**

Together with eleven other similar plates.

Diameters: 9 3/4 in. & 6 1/4 in., Length of platter: 15 1/2 in.

Estimate: \$300 - \$400



**Lot #262: SET OF TEN MEISSEN PORCELAIN
DINNER PLATES**

Together with a Meissen "Blue Onion" pattern 6 in. covered coffee pot, 3 cups, 2 saucers, 2 soup plates and 4 dinner plates.

Estimate: \$300 - \$400



Lot #263: PAIR OF PORCELAIN FIGURES

With underglaze blue crowned conjoined c mark.

Height: 6 in.

Estimate: \$200 - \$400



**Lot #264: HAVILAND LIMOGES PORCELAIN FISH
SERVICE**

23 1/2 in. oval platter and ten, 9-in. plates depicting various types of fish, signed B. Albert.

Estimate: \$200 - \$400



**Lot #265: COALPORT FORTY-EIGHT PIECE
"INDIAN TREE" PATTERN DINNER
SERVICE**

Estimate: \$300 - \$500



**Lot #266: PAIR OF FRENCH TOLE PEINTE MANTLE
URNS**

The angular trumpet bowls finely painted with mythological scenes; on lions feet and square bases.
Height: 12 in., Width: 7 1/4 in.

Estimate: \$800 - \$1,200



**Lot #267: VICTORIAN BLACK LACQUER PAPIER-
MACHE TRAY ON STAND WITH
SPLAYED LEGS**

Height: 17 1/4 in., Width: 32 in.

Estimate: \$400 - \$600



**Lot #268: GEORGE III STYLE INLAID MAHOGANY
OVAL TWO HANDLED TRAY**

With shell medallion, raised gallery and brass handles.
Length: 24 1/2 in.

Estimate: \$200 - \$400



**Lot #269: REGENCY BLACK GROUND PAPIER
MACHE TRAY**

With gilt butterflies amidst floral branches.
Dimensions: 30 in. x 23 in.

Estimate: \$300 - \$500



**Lot #270: VICTORIAN BLACK GROUND FLORAL
BEADWORK PANEL MOUNTED IN
A TRAY**

Together with a floral needlework throw pillow.

Estimate: \$200 - \$400



Lot #271: VICTORIAN SILVER-PLATED INK STAND
Height: 6 3/4 in., Width: 11 in.
Estimate: \$150 - \$250



**Lot #272: VICTORIAN MOTHER-OF-PEARL INLAID
BLACK LACQUER
PAPIER-MACHE INKSTAND**
With two glass wells; together with 2 Italian marble
spheres on turned wood stands.
Height: 6 3/4 in., Length: 9 in.
Estimate: \$200 - \$300



**Lot #273: ENGLISH SILVER PLATED TANTALUS
WITH THREE CUT GLASS
DECANTERS**
With Betjemann's patent lock.
Height: 13 1/4 in., Width: 16 1/4 in.
Estimate: \$300 - \$500



**Lot #274: FRENCH LIQUEUR BOX IN THE FORM OF
A STACK OF FOUR BOOKS**
Height: 5 1/2 in., Width: 8 in.
Estimate: \$300 - \$500



Lot #275: SIX VOLUMES OF BULWER'S NOVELS
George Routledge and Sons, London, 1877
Estimate: \$300 - \$500



**Lot #276: GEORGE III FIGURED MAHOGANY TEA
CADDY**
With three removable tin caddies, on brass lion paw
feet.
Length: 11 1/4 in.
Estimate: \$300 - \$400



Lot #277: CHINESE BRASS-MOUNTED HARDWOOD COSMETIC BOX

Height: 8 3/4 in., Width: 10 1/2 in., Depth: 14 3/4 in.

Estimate: \$150 - \$250



Lot #278: AMERICAN CARVED BONE DOMINOES SET AND BOX

The box with hinged dome pierced lid, on ring feet.

Height: Approx. 3 in., Width: 8 1/2 in.

Estimate: \$150 - \$250



Lot #279: TWO SMALL TABLE CLOCKS

Comprising: a Jerome & Co. 1883 balance clock in brass and wood case and a Briggs Rotary Pendulum clock with 1855 patent, German face and glass dome.

Heights: 11 in. and 7 in.

Estimate: \$100 - \$200



Lot #280: CONTINENTAL LITHOGRAPHIC "WINDMILL" CLOCK IN SHADOW BOX FRAME.

The windmill dated 1892.

Dimensions of case: 20 1/2 inches x 16 1/4 inches

Estimate: \$600 - \$800



Lot #281: VIEW OF THE SEA THROUGH ARCHED DOORWAY

Acrylic on canvas, signed J. Paclo and inscribed Rio, Set. '61, together with a still life with wine bottle and fruit, oil on canvas by Fagarty.

Dimensions: 13 in. x 16 in. and 36 in. x 48 in.

Estimate: \$200 - \$400



Lot #282: LARGE GROUP OF FINE TABLE LINEN

Approximately 400 assorted damask, lace and embroidered cloths, napkins, coasters and placemats; primarily white and ivory.

Estimate: \$200 - \$400



Lot #283: CHINESE EXPORT BLACK LACQUER CHAMFERED RECTANGULAR BOX

Length: 11 in.

Estimate: \$100 - \$200



Lot #284: TWO CAST IRON GRADUATED CAMPANIFORM URNS

Together with a gilt metal columnar lamp and a white overlay glass decanter and stopper.

Heights: 11 1/2 in. and 17 3/4 in.

Estimate: \$200 - \$400



Lot #285: DUTCH ENGRAVED BRASS OVAL TOBACCO BOX

With tavern scene, "Bytt Bier."

Length: 4 5/8 in.

Estimate: \$100 - \$200



Lot #286: TWO SMALL FIGURE CLOCKS

Comprising: a gold painted spelter cherub-form clock and an Ansonia 1878 clock with a girl in a swing.

Heights: 14 in. and 8 in.

Estimate: \$200 - \$400



Lot #287: ENGLISH PINE CHEST-OF-DRAWERS

With brass ring-drop handles and bracket feet.
Height: 36 in., Width: 29 in., Depth: 17 1/2 in.

Estimate: \$500 - \$700



Lot #288: LOUIS XVI STYLE CANAPE

Height: 38 in., Length: 79 and 1/2 in.

Estimate: \$600 - \$800



**Lot #289: LOUIS XVI STYLE BRASS MOUNTED
MAHOGANY KIDNEY-SHAPED
TABLE**

Height: 29 1/2 in., Width: 27 3/4 in.

Estimate: \$600 - \$800



**Lot #290: PAIR OF LOUIS XV STYLE CARVED
IVORY PAINTED FAUTEUILS A
LA REINE**

Each cartouche back with shell and flower head crest
above padded arms, serpentine seats and cabriole leg;
together with a pair of Louis XV style chaises.

Estimate: \$700 - \$900



**Lot #291: CONTINENTAL ROCOCO WALNUT &
FRUITWOOD CENTER TABLE**

With solid wood top, veneered frieze and cabriole legs.
Height: 32 in., Width: 6 Ft., Depth: 26 in.

Estimate: \$700 - \$900



Lot #292: SET OF EIGHT LOUIS XV BEECHWOOD SIDE CHAIRS

With padded backs and seats raised on cabriole legs.

Estimate: \$800 - \$1,200



Lot #293: LOUIS XV STYLE GILT METAL MOUNTED PARQUETRY PETITE COMMODE

Height: 29 3/4 in., Width: 27 in., Depth: 15 in.

Estimate: \$700 - \$900



Lot #294: LOUIS XVI STYLE FABRIC AND PRINT MOUNTED FOUR FOLD SCREEN

Height: 5 ft. 10 in., Fully extended: 4 ft. 6 in.

Estimate: \$700 - \$900



Lot #295: CHINESE EXPORT BLACK LACQUER TRAY STAND

Height: 25 1/2 in., Width: 21 in., Depth: 21 1/2 in.

Estimate: \$400 - \$600



Lot #296: LOUIS XV PROVINCIAL-STYLE WALNUT DINING TABLE

The table on molded rails and cabriole legs; with two leaves. Length of table fully extended: 12 ft. 8 in.

Estimate: \$800 - \$1,200



Lot #297: NEOCLASSICAL STYLE WALNUT NEST OF THREE TABLES WITH TOILE PANELS

Height: 22 1/4 in., Width: 15 1/2 in.

Estimate: \$200 - \$400



Lot #298: SMALL WALNUT TAVERN TABLE

The rectangular overhang tray top above a plain frieze and on square tapered legs.

Height: 27 1/4 in., Width: 19 1/4 in., Depth: 16 in.

Estimate: \$200 - \$400



Lot #299: AMERICAN CHIPPENDALE WALNUT TRIPOD CANDLESTAND

With tilting top, column stem and snake feet.

Height: 25 1/4 in., Diameter: 19 1/4 in.

Estimate: \$400 - \$600



Lot #300: QUEEN ANNE STYLE CARVED MAHOGANY BENCH

The nailed needlepoint seat worked with two wreaths on a lattice ground, raised on cabriole legs joined by an H-stretcher.

Height: 18 in., Width: 38 in.

Estimate: \$200 - \$400