

Lots 201 - 210



Lot #201: BIEDERMEIER FRUITWOOD ARMCHAIR

The curved top rail above upholstered panel, the drop-in bowed seat on splayed legs. 39 1/4 in. tall.

Estimate: \$ 200.00 - \$ 300.00



Lot #202: BIEDERMEIER INLAID WALNUT WRITING TABLE

The 1/4-veneered cross-banded top with bowed ends, above a frieze drawer, on double columns joined by h-stretchers, 30 3/4 x 44 x 26 1/4 in.

Estimate: \$ 1500.00 - \$ 2500.00



Lot #203: BIEDERMEIER WALNUT NIGHT STAND

The one-quarter-veneered top with round corners above a drawer and a door, on a plinth, 32 x 18 3/4 x 16 in.

Estimate: \$ 200.00 - \$ 400.00



Lot #204: BIEDERMEIER WALNUT OPEN ARMCHAIR

The curved top rail above pierced interlaced stretcher, shaped arms and tufted seat on shaped legs, 34 x 19 1/2 in.

Estimate: \$ 300.00 - \$ 500.00



Lot #205: VICTORIAN PORCELAIN 35 PIECE TEA SERVICE

Comprising fifteen cups, 13 saucers, two serving plates, teapot and footed stand, covered sugar bowl, creamer and waste pail; together with nine 9 1/4 in. plates and a 5 3/4 in. dish.

Estimate: \$ 500.00 - \$ 700.00



Lot #206: PAIR OF DAVENPORT STONE CHINA SMALL PLATTERS

Each inscribed "49 Regiment" within a bow-knotted wreath within a Japan pattern surround, 10 1/4 in. long.

Estimate: \$ 600.00 - \$ 800.00



Lot #207: ROYAL WORCESTER PORCELAIN EWER

With floral branches, faux bois handle. 8 3/8 in. tall.

Estimate: \$ 125.00 - \$ 175.00



Lot #208: PAIR OF COALPORT PORCELAIN BOTANICAL PLATES

The one with bleeding hearts, the second with passion flower, with gilt highlights.

Estimate: \$ 200.00 - \$ 300.00



Lot #209: PAIR OF ENGLISH PATTERN "735" PORCELAIN RETICULATED BOWLS

The pierced scrollwork relief-decorated in gilt with grape clusters, beneath floral reserves, grape leaf handles; 4 1/8 x 10 in.

Estimate: \$ 300.00 - \$ 400.00



Lot #210: MASON'S IRONSTONE SAUCE TUREEN, COVER AND STAND

In famille rose-style with flowers, trees and rock work, foo dog knop, 6 x 7 3/4 in.

Estimate: \$ 300.00 - \$ 500.00

[To Top](#)



Lots 211 - 220



Lot #211: ENGLISH TRANSFER-PRINTED BLUE AND WHITE RETICULATED BASKET

In the Blue Willow pattern, with lobed rim and faux bois handles, unmarked; 10 1/4 in. long.

Estimate: \$ 300.00 - \$ 400.00



Lot #212: ENGLISH PORCELAIN TEA SERVICE

Comprised of nine 9-inch plates, one stemmed compote, and seven assorted footed plates; with shaped cobalt borders, floral swags and gilt highlights.

Estimate: \$ 200.00 - \$ 400.00



Lot #213: PAIR OF PARIS PORCELAIN TWO-HANDLED MANTEL URNS

Each flattened ovoid blue bowl with floral swags, gilt scroll handles, and lion's paw feet. 7 in. tall.

Estimate: \$ 100.00 - \$ 200.00



Lot #214: WORCESTER PORCELAIN "SPINNING MAIDEN" TEAPOT AND COVER AND A CREAMER

The spherical pot with two views of spinners, the pear-form creamer with three chinoiserie children. Prov.: Dorothy R.L. Howell, Warwickshire, as illustrated in Frank Tilly's book on teapots PL LXI.

Estimate: \$ 500.00 - \$ 700.00



Lot #215: TWO WORCESTER PORCELAIN PLATES

With blue crescent marks: comprising a lobed rim soup plate, in the Marriage pattern, and a cake dish (heavily restored) with floral clusters. Prov.: Dorothy R.L. Howell, Warwickshire.

Estimate: \$ 150.00 - \$ 250.00



Lot #216: DELFT GLAZED MILKING GROUP

Modeled as a seated youth with pail beneath a cow.

Estimate: \$ 200.00 - \$ 400.00



Lot #217: PAIR OF MEISSEN PORCELAIN FIGURES OF PARROTS

Each with colorful wings and crest on tree stump with applied berried leaf branches, canceled crossed mark, 10 in. tall.

Estimate: \$ 400.00 - \$ 600.00



Lot #218: PAIR OF GILT-METAL MOUNTED SEVRES-STYLE PORCELAIN "JEWELLED" VASES & COVERS

Each sky blue bowl with scenes of lovers & view of windmill or a ruin on the reverse, "ruby" & "ivory" beading, loose handles & fluted neck. 14 x 7 in.
Estimate: \$ 800.00 - \$ 1200.00



Lot #219: TWO IVORY-GLAZED PORCELAIN FIGURES

The one, unmarked, the blind-folded figure of Justice with drawn sword, the other a K.P.M. group of man with rearing horse.
Estimate: \$ 150.00 - \$ 250.00



Lot #220: HEREND PART DINNER SERVICE

Approximately eighty pieces, not all pictured.
Estimate: \$ 800.00 - \$ 1000.00

[To Top](#)



Lots 221 - 230



Lot #221: PAIR OF JAPANESE ARITAWARE VASES

Each baluster bowl with bird and flowers beneath waved rim. 16 1/4 in. tall.
Estimate: \$ 100.00- \$ 200.00



Lot #222: PAIR OF CHINESE BLUE AND WHITE PORCELAIN CANDLESTICKS

Mounted as lamps, two graduated segments spaced by drip pans, painted with peonies and rockwork, bases drilled and with six-character mark; on wood stands. Height of sticks, 15 1/2 in.
Estimate: \$ 400.00 - \$ 600.00



Lot #223: TWO SIMILAR CHINESE BLUE AND WHITE PORCELAIN BALUSTER-FORM JARS AND COVERS

Each with four character medallions on flowerhead and vine work ground, four character mark.
Estimate: \$ 400.00 - \$ 600.00



Lot #224: CHINESE CELADON CRACKLE-GLAZED BALUSTER-FORM VASE

With ringed neck and rim.
Estimate: \$ 200.00 - \$ 300.00



Lot #225: PAIR OF CHINESE EXPORT PORCELAIN ARMORIAL DEEP DISHES WITH RETICULATED BORDER

Enameled with blue and green entwined wreathes centering a five-balled crown above a white bull's head atop a gilt ground, 9 in. diam.
Estimate: \$ 1200.0 - \$ 1800.00



Lot #226: TWO TIFFANY & CO. SILVER TABLE ARTICLES

Comprised of an eight inch pear-form footed coffee pot with wood handle and a date "1882" christening dish dated 1882. Approx.. 24 oz.
Estimate: \$ 200.00 - \$ 400.00



Lot #227: CONTINENTAL SILVER GILT SHELL-FORM DISH

Together with a silver-plated tray.
Estimate: \$ 150.00 - \$ 250.00



Lot #228: ENGLISH SILVER DRESSING TABLE TRAY

Marks H.V.P. & Co., Birmingham, 1904, 8 oz.
Estimate: \$ 250.00 - \$ 350.00



Lot #229: PAIR OF S. KIRK & SON TRIPOD CASTERS

Richly repoussé and chased, script monogram, 5.45 oz.
Estimate: \$ 400.00 - \$ 600.00



Lot #230: GROUP OF SILVER SMALL TABLE ARTICLES

Including group of candlesticks, nut dishes, salt and lidded mustard pot.
Estimate: \$ 100.00 - \$ 150.00

[To Top](#)



Lots 231 - 240



Lot #231: GROUP OF SILVER AND SILVER-PLATED ARTICLE.

Estimate: \$ 80.00- \$ 120.00



Lot #232: ALVIN SILVER FRUIT BOWL

Together with three silver-plated small trays.

Estimate: \$ 150.00 - \$ 250.00



Lot #233: VICTORIAN SILVER ARMORIAL INK STAND

Marks H.W. & Co., Sheffield, 1856; of oblong scalloped form pierced with scrolls centering eagle head armorial and motto, stemmed bowl and lidded glass wells (one missing), on bracket feet; 5 1/2 x 13 in.

Estimate: \$ 300.00 - \$ 400.00



Lot #234: ENGLISH SILVER CIGARETTE BOX

2 1/4 x 7 in.

Estimate: \$ 200.00 - \$ 300.00



Lot #235: INTERNATIONAL SILVER GRAVY BOAT

Together with a Towle stemmed compote; 13 oz. (combined).

Estimate: \$ 100.00 - \$ 150.00



Lot #236: SIX RICHARD WALLACE SILVER STEMMED GOBLETS

6 3/8 in. tall, approx. 24 oz.

Estimate: \$ 300.00 - \$ 400.00



Lot #237: PAIR OF SILVER-PLATED JARDINIÈRES

6 1/4 in. tall, copper showing through in places.

Estimate: \$ 200.00 - \$ 400.00



Lot #238: ENGLISH SILVER PRESENTATION INK STAND

Birmingham, 1899; the oval surface with pierced border, inscribed, C.S.S., silver-lidded glass well, bracket feet.

Estimate: \$ 125.00 - \$ 175.00



Lot #239: ELKINGTON & CO. SILVER-PLATED TWO-HANDLED TUREEN AND COVER

With rope twist rim and loop handles rising from leaves, crowned belted armorial enclosing flowerhead, cover with rope twist handle; 11 in. x 16 1/2 in.

Estimate: \$ 600.00 - \$ 800.00



Lot #240: GROUP OF SILVER TABLE ARTICLES

Approx. 37 oz.

Estimate: \$ 250.00 - \$ 350.00

[To Top](#)



Lots 241 - 250



Lot #241: RUSSIAN SILVER THREE-PIECE TEA SET

Together with two beakers and a funnel. Approx. 36 oz.
Estimate: \$ 300.00- \$ 500.00



Lot #242: ASSEMBLED SILVER TEA SET

Comprised of a French 16 1/2 in. tray, German teapot, sterling creamer and sugar bowl and Mexican 6 1/4 in. dish. Approx. 48 oz.
Estimate: \$ 150.00 - \$ 250.00



Lot #243: CONTINENTAL SILVER-PLATED PEAR-FORM COFFEE POT

With bracket spout, applied shells, wood handle and reed-banded foot, hinged cover with acorn knop. 9 3/4 in. tall.
Estimate: \$ 200.00 - \$ 400.00



Lot #244: TWO ENGLISH SILVER-PLATED ARTICLES AND A LEONARD COVERED DISH

Estimate: \$ 100.00 - \$ 200.00



Lot #245: CRESWICK SILVER-PLATED RECTANGULAR VEGETABLE DISH AND COVER

Together with three American covered dishes, the first with bead and reel edge, reeded flattened dome cover with eagle armorial and twist-off loop handle, two by Reed & Barton with twist handles, the last, L.B.S. Co.
Estimate: \$ 100.00 - \$ 200.00



Lot #246: PAIR OF REGENCY-STYLE CARVED PAINTED AND PARCEL GILT TWO-LIGHT WALL APPLIQUES

Each centered by a seated horn player against tiered palm tree, the tasseled drapery base supporting the gilt-metal spiral twist arms. 32 3/4 x 10 x 9 in.
Estimate: \$ 600.00 - \$ 800.00



Lot #247: TWO SIMILAR ENGLISH SILVER-PLATED OIL LAMPS

Of graduated size, each octagonal ovoid bowl with stag armorial or shield cartouche; 31 1/2 and 33 1/2 in. tall.

Estimate: \$ 400.00 - \$ 600.00



Lot #248: ENGLISH SILVER-PLATED AND CUT-GLASS OIL LAMP

The fluted bowl on reeded legs joined by concave stretchers, stepped base; 20 1/2 in. tall to neck.

Estimate: \$ 200.00 - \$ 400.00



Lot #249: LOUIS XVI-STYLE CUT-GLASS-MOUNTED TWELVE-LIGHT CHANDELIER

The main ring with webbed mounts and cut-glass ovals, supporting the double cluster s-form arms joined by swags and to the ceiling fixture by six glass-mounted chains.

Estimate: \$ 1500.00 - \$ 2500.00



Lot #250: PAIR OF AESTHETIC MOVEMENT GILT-BRONZE WALL LIGHTS

Each eagle-headed spiral-twist arm rising from anthemion and tiered leaf bracket, with pierced fret drip pan and fluted nozzle; 11 3/4 and 16 1/2 in. tall.

Estimate: \$ 500.00 - \$ 700.00

[To Top](#)



Lots 251 - 260



Lot #251: LOUIS XV-STYLE ORMOLU TWO-LIGHT CHANDELIER

The foliate cast back supporting the spiral twist arms with foliate drip pan and nozzles. 18 in. long.

Estimate: \$ 400.00- \$ 600.00



Lot #252: NEOCLASSICAL-STYLE WROUGHT IRON-MOUNTED CARVED AND AND PARCEL-GILT WOOD NINE-LIGHT CHANDELIER

The reeded urn plate supporting the s-scroll arms with reeded urn nozzles joined to ceiling by three rods. 33 in. diameter.

Estimate: \$ 800.00 - \$ 1200.00



Lot #253: THREE PAIRS OF LOUIS XV-STYLE GILT-METAL WALL APPLIQUES

Including a set of four and a single larger pair.

Estimate: \$ 500.00 - \$ 800.00



Lot #254: PAIR OF LOUIS XVI-STYLE GILT-METAL THREE-LIGHT WALL APPLIQUES

Each tapered flambeau back with satyr head from which rise the foliate-cast c-scroll arms. 22 1/2 x 16 in.

Estimate: \$ 400.00 - \$ 600.00



Lot #255: ENGLISH PORCELAIN TOPOGRAPHICAL URN, MOUNTED AS A LAMP

Together with a Vienna transfer-decorated urn.

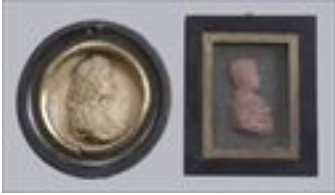
Estimate: \$ 200.00 - \$ 400.00



Lot #256: REGENCY-STYLE TEN-LIGHT BRASS AND GLASS CHANDELIER

39 in. high, 28 in. wide.

Estimate: \$ 1000.00 - \$ 1500.00



Lot #257: TWO WAXWORK MINIATURE PROFILE PORTRAITS

The one in red a boy in ruffled shirt, the second, a rondel of a long-haired gentleman, 5 3/4 x 6 1/2 in. and 5 3/4 x 6 1/2 in.

Estimate: \$ 100.00 - \$ 200.00



Lot #258: SIX MINIATURE PICTURES

Two oval portraits of a gentleman signed I. Holden, a woman in blue-ribboned bonnet, dated 1851, two reverse ovals on glass, oval view of a bridge on ivory, and a watercolor head of a horse.

\$ 150.00 - \$ 250.00



Lot #259: CONTINENTAL SCHOOL, MOTHER AND CHILD

Miniature on ivory, rococo-style giltwood frame; 10 1/4 x 9 1/4 in. (framed).

Estimate: \$ 100.00 - \$ 200.00



Lot #260: FIVE CONTINENTAL PORTRAIT MINIATURES ON IVORY

Four ladies and a child. The largest 4 1/2 x 3 in.

Estimate: \$ 125.00 - \$ 225.00

[To Top](#)



Lots 261 - 270



Lot #261: THREE MINIATURE PORTRAITS ON IVORY

A gentleman, a scholar with hat and a young boy, rectangular, circular and oval, giltwood, brass and ebonized frames. The largest 10 x 9 in.

Estimate: \$ 150.00- \$ 200.00



Lot #262: BRITISH SCHOOL, PORTRAIT OF AN OFFICER

Circa 1820 watercolor on ivory, later incised ebonized and parcel-gilt frame; framed 9 x 8 in.

Estimate: \$ 150.00 - \$ 200.00



Lot #263: GROUP OF MINIATURES

Comprising an oval cameo, three porcelain pictures, two composition rondels, two oval gilt profiles and a reproduction on ivory of girl with grapes; the largest 5 x 4 1/2 in.

Estimate: \$ 100.00 - \$ 200.00



Lot #264: PAIR OF ENGLISH GILT-METAL PROFILE BUSTS

On black velvet within rosewood and parcel-gilt shadow box frame, 9 1/4 x 8 3/4 in. (framed).

Estimate: \$ 400.00 - \$ 600.00



Lot #265: RETABLO, LA ALMA DE MARIA

13 1/2 x 10 1/4 in.

Estimate: \$ 300.00 - \$ 500.00



Lot #266: VIENNESE GILT-METAL MOUNTED ENAMEL BUD VASE

The ovoid bowl with a couple at water's edge, and a maiden reading, beaded shoulder and base, 3 in. tall.

Estimate: \$ 200.00 - \$ 300.00



Lot #267: TWO SCOTTISH HORN SNUFF MULLS WITH SILVER-PLATED LIDS AND A HORN SPOON

The one fitted with clear faceted glass mount, the other with chased thistle.

Estimate: \$ 300.00 - \$ 500.00



Lot #268: DRESDEN PORCELAIN OCTAGONAL INKSTAND

4 1/2 x 7 in., impressed "D 8235 N."

Estimate: \$ 150.00 - \$ 250.00



Lot #269: TWO FRENCH GILT-BRONZE FIGURE GROUPS

The larger modeled as Venus pushing a caged Cupid, the second a child Bacchante straddling a barrel.

Estimate: \$ 500.00 - \$ 700.00



Lot #270: EMPIRE ORMOLU FIGURAL MANTEL CLOCK

The 3 1/4 in. dial within arch case flanked by Venus crowning Amor with a wreath, the base with Amor shooting arrow at reclining Venus, antheia feet. 19 1/4 x 12 1/2 in.

Estimate: \$ 1000.00 - \$ 1500.00

[To Top](#)



Lots 271 - 280



Lot #271: PAIR OF LOUIS XV-STYLE ORMOLU THREE-LIGHT CANDELABRA

Each with a figure supporting a c-scroll stem. 25 x 12 in.

Estimate: \$ 800.00- \$ 1200.00



Lot #272: PAIR OF BRASS CANDLESTICKS

13 x 4 1/2 in.

Estimate: \$ 100.00 - \$ 200.00



Lot #273: GROUP OF BOHEMIAN ENGRAVED GLASS TABLE ARTICLES

Including a pair of lustres, pair of decanters and stoppers, pair of vases with prism drops, pair of bell-form vases, stoppered cruet, two vases, creamer and mustard pot.

Estimate: \$ 300.00 - \$ 500.00



Lot #274: GROUP OF GILT-METAL MOUNTED GLASS OR CERAMIC ARTICLES

Estimate: \$ 300.00 - \$ 500.00



Lot #275: PETIT POINT NEEDLEWORK BELL PULL WITH REPOUSSE BRASS ENDS

Worked with six 18th c. figures, 6 ft. 8 in. long.

Estimate: \$ 100.00 - \$ 200.00



Lot #276: GROUP OF FIVE BALLROOM FANS

Lengths: 14 in. to 22 1/2 in.

Estimate: \$ 200.00 - \$ 400.00



Lot #277: FIVE HAND-COLORED LITHOGRAPHIC BALLROOM FANS
With figure scenes, one with figure-relief carved mother-of-pearl sticks, the others with mother-of-pearl, ivory or papier maché stick.
Estimate: \$ 300.00 - \$ 500.00



Lot #278: IVORY-FOLDING HANDLED BLACK SILK PARASOL
30 1/4 in. long.
Estimate: \$ 40.00 - \$ 60.00



Lot #279: VICTORIAN PAPIER MACHE FIRE FANS WITH WOOD HANDLES
Each lobed panel painted with parrot, floral clusters and gilt foliage, giltwood handles. 17 x 9 1/4 in.
Estimate: \$ 200.00 - \$ 400.00



Lot #280: FIVE SCENIC WALLPAPER PANELS
Each printed in colors, one marked Aubusson in the margin. Image sizes: 21 7/8 x 22 1/4 in., 20 1/4 x 20 11/16 in., 41 5/16 x 24 5/16 in., 26 7/16 x 24 7/8 in., and 27 11/16 x 65 1/4 in.
Estimate: \$ 1500.00 - \$ 2500.00

[To Top](#)



Lots 281 - 290



Lot #281: THREE PRINTS OF CITRUS FRUIT

Engravings with hand-coloring, 12 3/8 x 7 1/2 in. (sight).

Estimate: \$ 100.00- \$ 200.00



Lot #282: TWO BOTANICAL PRINTS

Hand-colored engravings on paper, 15 11/16 x 9 3/16 in. (image, sight).

Estimate: \$ 600.00 - \$ 800.00



Lot #283: TWO PRINTS OF "ST. PETERSBOURG"

Etching and aquatint with hand-coloring, 16 3/4 x 23 in. (sight, plate).

Estimate: \$ 300.00 - \$ 500.00



Lot #284: AFTER R.W. LENDER, "IN A WELSH VILLAGE"

Engraving with hand-coloring, 18 1/2 x 28 1/2 in., (image, sight).

Estimate: \$ 150.00 - \$ 250.00



Lot #285: AFTER KIP & KNYFF, "THE SEAT OF WM. CHALONER..."

Etching with hand-coloring, 13 5/8 x 18 in. (plate, sight).

Estimate: \$ 400.00 - \$ 600.00



Lot #286: AFTER KIP & KNYFF, "HAMPTON COURT IN HEREFORDSHIRE ..."

Etching with hand-coloring, 13 5/8 x 18 in. (plate, sight).

Estimate: \$ 400.00 - \$ 600.00



Lot #287: THREE PRINTS OF ENGLISH PROPERTY

"Godmersham Park in Kent", Bradbourn in Kent", "Egerton Farm in Kent."
Hand-colored aquatints, 14 9/16 x 17 9/16 in. (image, sight).

Estimate: \$ 500.00 - \$ 700.00



Lot #288: TWO PRINTS: ROYAL HOSPITAL AT CHELSEA & BLACKFRIARS BRIDGE

The first a hand-colored etching, the second an etching and aquatint with hand-coloring, 11 5/8 x 16 1/8 in. (plate, sight).

Estimate: \$ 100.00 - \$ 200.00

Lot #289: NO LOT



Lot #290: AFTER ALKEN, "THE GRAND LEICESTERSHIRE FOX HUNT"

Etching and aquatint with hand-coloring, 22 3/4 x 30 3/4 in. (plate, sight).

Estimate: \$ 150.00 - \$ 250.00

[To Top](#)



Lots 291 - 300



Lot #291: AFTER HOLLINGS & STADLER, "A VIEW OF HIGH STREET, BIRMINGHAM"

Etching and aquatint with hand-coloring, 22 3/4 x 30 3/4 in. (plate, sight).
Estimate: \$ 150.00- \$ 250.00



Lot #292: FIVE HORSE AND JOCKEY PRINTS

Collotypes on paper, hand-colored and laid down on canvas and varnished,
12 x 16 1/8 in.

Estimate: \$ 300.00 - \$ 500.00



Lot #293: TWO LEATHER STRAP BRASS SLEIGH BELLS

Estimate: \$ 250.00 - \$ 450.00



Lot #294: LOETZ-TYPE IRRIDESCENT GLASS VASE

The pinch bowl with spider web ribbing and curled over rim, unmarked.
Estimate: \$ 400.00 - \$ 600.00



Lot #295: A. WALTER NANCY PATE DE VERRE PEN TRAY

The divided leaf form tray modeled with a beetle, marked, 1 1/2 x 9 in.
Estimate: \$ 600.00 - \$ 800.00



Lot #296: LALIQUE MOLDED GLASS VASE

Relief-molded with fir pendant branches and cones, molded Lalique; 5 1/2 x
6 1/4 in.

Estimate: \$ 500.00 - \$ 700.00



Lot #297: CLEAR AND FROSTED MOLDED GLASS VASE

Bulbous form decorated with grasshoppers amongst blades of grass, 11 in. tall, scratched signature on base, R. Lalique France.

Estimate: \$ 400.00 - \$ 600.00



Lot #298: PAIR OF LALIQUE "LANGUEDOC" VASES

Molded amber glass, circa 1929, approx. 8 7/8 in. tall, both damaged

Estimate: \$ 2000.00 - \$ 4000.00



Lot #299: R. LALIQUE SHALLOW GLASS BOWL

Vaseline glass, the shallow bowl with swirling relief-molded carp, 1 3/4 x 10 in., with molded mark, "R. Lalique" and etched, "France."

Estimate: \$ 300.00 - \$ 500.00



Lot #300: R. LALIQUE AMBER-MOLDED GLASS SPHERICAL VASE

Relief-molded with bees and blossoms on honeycomb and lattice ground, inscribed R. Lalique France; 6 5/8 in. tall.

Estimate: \$ 700.00 - \$ 1000.00

[To Top](#)

