

Lots 201 - 210



Lot #201: DARK BLUE-PAINTED SEA CHEST

The hinged top and dovetailed case with five-painted stars and fitted with braided rope drop handles; 16 3/4 x 46 1/2 x 18 1/2 in.

Estimate: \$ 200.00 - \$ 400.00



Lot #202: SWEDISH PAINTED PINE CHEST OF DRAWERS

The top with green stained panel, above a shallow drawer and three floral-painted drawers with wood pulls, on reeded bun feet; 36 3/4 x 46 x 21 1/2 in.

Estimate: \$ 800.00 - \$ 1200.00



Lot #203: SWISS PAINTED WOOD ARMOIRE

The red wood grained cornice above the initials "I.H.S." and a two-paneled door with floral panels, the case with shell scrolls on blue-stained ground, back board replaced; 5 ft. 6 1/4 in. x 4 ft. 2 in. x 16 in.

Estimate: \$ 700.00 - \$ 900.00



Lot #204: CONTEMPORARY BRUSHED BRASS VITRINE CABINET ON STEEL STAND

The vitrine with two doors opening to mirror-backed interior, the stand on square legs; 6 ft. 4 3/4 in. x 4 ft. 3 in. x 14 in.

Estimate: \$ 400.00 - \$ 800.00



Lot #205: THREE DECORATIVE IVORY-PAINTED AND MIRROR GLASS TWO-FOLD SCREENS

Each fold with twelve mirrored panels, the mirror plate is actually on plexiglass, making these lighter and easier to maneuver, the back of each screen is cork; 7 ft. 7 in. x 26 3/4 in.

Estimate: \$ 500.00 - \$ 700.00



Lot #206: LOUIS VUITTON LEATHER-MOUNTED TRUNK

The exterior with stamped leather edges, wood slats and brass-plated latches and lock; 20 x 40 x 21 in.

Estimate: \$ 700.00 - \$ 900.00



Lot #207: TWO LOUIS VUITTON SUITCASES

Largest 20 1/2 x 25 3/4 x 8 1/2 in.

Estimate: \$ 800.00 - \$ 1200.00



Lot #208: TWO LOUIS VUITTON SUITCASES

Largest 16 1/2 x 22 3/4 x 8 1/2 in.

Estimate: \$ 800.00 - \$ 1200.00



Lot #209: THREE LOUIS VUITTON SUITCASES

Largest 20 1/2 x 31 1/2 x 10 in.

Estimate: \$ 1000.00 - \$ 1500.00



Lot #210: TWO LOUIS VUITTON SUITCASES AND A LOUIS VUITTON TOILETRY CASE

Largest 19 x 24 x 7 in.

Estimate: \$ 700.00 - \$ 900.00

[Back](#)

[Back to Index](#)

[Next](#)

Lots 211 - 220



Lot #211: PAIR OF SHEFFIELD PLATE SINGLE-LIGHT ARGAND LAMPS

Each drum-form pedestal with urn-shaped font and a cross arm supporting the light cylinder, electrified; 16 x 8 1/2 in.
Estimate: \$ 800.00 - \$ 1200.00



Lot #212: GEORGE III INLAID MAHOGANY WHEEL BAROMETER

Signed J. Maspoli, Hull; with dry/damp, thermometer, barometer and signature mercury level dials; 37 1/2 in., 10 in. diam.
Estimate: \$ 600.00 - \$ 800.00



Lot #213: GEORGE III INLAID MAHOGANY STICK BAROMETER

Signed J. Testi no. 44 Saffron Hill; the combination thermometer/barometer dial flanking mercury column, the case with feather banding; 39 x 4 3/4 in.
Estimate: \$ 500.00 - \$ 700.00



Lot #214: GEORGE III INLAID MAHOGANY WHEEL BAROMETER

Signed J. Somatirco & Son, 37 Charles St., Hatton Garden; with dry-damp, thermometer and barometer dials and "Warranted Correct" mercury level; 42 1/4 in., 12 in. diam.
Estimate: \$ 700.00 - \$ 900.00



Lot #214A: VICTORIAN MAHOGANY BAROMETER

38 1/2 in., 10 in. diam.
Estimate: \$ 500.00 - \$ 700.00



Lot #215: REGENCY IVORY AND EBONY INLAID MAHOGANY SEWING BOX IN THE FORM OF A PIANOFORTE

The hinged lid with inlaid keyboard, opening to a later silvered paper-lined interior, on turned legs; 6 3/4 x 4 1/2 x 7 1/2 in.
Estimate: \$ 300.00 - \$ 500.00



Lot #216: REGENCY PEWTER AND IVORY-MOUNTED TORTOISESHELL TEA CADDY

Of oblong octagonal outline, the hinged cover opening to two lidded recesses, raised on ivory bun feet; 6 1/4 x 7 1/2 x 4 3/4 in.

Estimate: \$ 800.00 - \$ 1200.00



Lot #217: REGENCY PEWTER AND IVORY-MOUNTED TORTOISESHELL BOW-FRONT TEA CADDY

The hinged cover opening to two lidded recesses with "amber" knobs, the case on lion's paw feet; 5 1/2 x 6 3/4 x 4 1/2 in.

Estimate: \$ 800.00 - \$ 1200.00



Lot #218: REGENCY IVORY-MOUNTED TORTOISESHELL SCALLOP-FRONTED TEA CADDY

The hinged cover opening to two lids, raised on wood bun feet; 6 3/8 x 9 x 5 1/4 in.

Estimate: \$ 800.00 - \$ 1200.00



Lot #219: EARLY VICTORIAN MOTHER-OF-PEARL INLAID TORTOISESHELL BOW-FRONT TEA CADDY

The hinged cover opening to two lidded recesses with ivory knobs, the case with flowers and scrolls, on wood ball feet; 6 x 7 7/8 x 5 3/4 in.

Estimate: \$ 800.00 - \$ 1200.00



Lot #220: CARVED WALNUT CHAMFERED RECTANGULAR TEA CADDY

The lid with open bible within crossed branches and a Hebraic inscription, the case relief carved at the front and sides with a temple and city walls; 4 1/4 x 6 1/4 x 4 1/8 in.

Estimate: \$ 200.00 - \$ 400.00

Lots 221 - 230



Lot #221: VICTORIAN BLACK GLASS BOTTLE WITH PAINTED SCENE, MOUNTED AS A LAMP

Centered by a stepped scene of two figures seated on a hillside, town at left horizon; 17 3/4 in.

Estimate: \$ 200.00 - \$ 300.00



Lot #222: EDGAR BROWNE: "PHIZ AND DICKENS" AS THEY APPEARED TO EDGAR BROWN, IN TWO VOLUMES

Limited edition numbered 153 of 175 copies, James Nisbet & Co., Limited, London, 1913, with illustrations by Hablot K. Browne and with twenty autographed letters, authenticated by James F. (?) Madigan, full gold-tooled morocco binding; 12 1/4 x 9 in.

Estimate: \$ 800.00 - \$ 1200.00



Lot #223: TIFFANY STUDIOS STYLE BRONZE COUNTER BALANCE FLOOR LAMP

Fitted with a later green shade; 4 ft. 2 in. x 23 in.

Estimate: \$ 1000.00 - \$ 1500.00



Lot #223A: TIFFANY STUDIOS GLASS AND BRONZE FLOOR LAMP

58 in.

Estimate: \$ 4000.00 - \$ 8000.00



Lot #224: FRENCH GOTHIC STYLE GILT-METAL NINE-LIGHT CHANDELIER

The nine-lobed pierced gallery with fleurs de lys and "turret" nozzles, above pendant with paired felines, joined to ceiling plate by chains; approx. 46 in., 24 1/2 in. diam.

Estimate: \$ 1000.00 - \$ 1500.00



Lot #225: SIX GOTHIC STYLE CARVED ALABASTER FIGURES SET INTO A VENETIAN ROCOCO STYLE MINIATURE VITRINE

The figures with traces of polychrome on gilt or marbled brackets comprising a Madonna and Child, two female martyr saints and three male saints, the case with glazed sides and raised on cabriole legs; the figures 3 1/2 to 3 7/8 in., vitrine 24 1/4 x 14 1/2 x 4 1/2 in.

Estimate: \$ 300.00 - \$ 500.00



Lot #226: SPANISH BAROQUE CARVED WOOD AND PAINTED GESSO FIGURE OF A DOMINICAN
The tonsured figure wearing a hooded robe and holding a bible in his left arm, on marbled base; 13 1/4 x 5 3/8 in.
Estimate: \$ 300.00 - \$ 400.00



Lot #227: SPANISH BAROQUE CARVED AND PAINTED FIGURE OF A SOLDIER WEARING ARMOR
The head with mustache and helmet, the body clad in armor and with red cloak, arms raised and holding a removable sword; 2 3/4 x 11 x 6 1/2 in.
Estimate: \$ 800.00 - \$ 1200.00



Lot #228: SPANISH COLONIAL CARVED AND PAINTED WOOD FIGURE OF A SAINT WITH INSET GLASS EYES
Wearing a black cloak over a brown robe, holding a bible in one hand, the other hand raised to hold a staff; 38 x 13 1/2 x 11 1/4 in.
Estimate: \$ 700.00 - \$ 900.00



Lot #229: GERMAN BAROQUE CARVED AND PAINTED WOOD FIGURE OF A FRIAR
With head facing forward, wearing a hooded robe with foliate scroll border, arms upraised; 33 3/4 x 16 x 10 3/4 in.
Estimate: \$ 300.00 - \$ 500.00



Lot #230: GERMAN BAROQUE CARVED AND PAINTED WOOD FIGURE OF THE CHRIST CHILD
Rendered with curly hair, facing forward and with arms raised, above hollow-backed skirt, on metal stand; 14 x 9 1/2 in.
Estimate: \$ 600.00 - \$ 800.00

Lots 231 - 240



Lot #231: GERMAN CARVED IVORY FIGURE OF THE MADONNA

With scarf-covered head and belted robe, standing on foliate-fronted base, velvet-covered stand; 8 x 2 1/4 in.
Estimate: \$ 500.00 - \$ 1000.00



Lot #232: SOUTH GERMAN CARVED AND PAINTED WOOD FIGURE OF ST. SEBASTIAN

The nude long-haired figure with loin cloth, tethered to a tree; 31 x 8 3/4 x 6 1/2 in.
Estimate: \$ 700.00 - \$ 900.00



Lot #233: ITALIAN RENAISSANCE TERRACOTTA FIGURE OF THE VIRGIN

Modeled kneeling with hands joined in prayer, head gazing down to left, gray-stained base; 43 x 12 3/4 x 11 1/2 in.
Estimate: \$ 1200.00 - \$ 1800.00



Lot #234: CONTINENTAL BAROQUE CARVED WOOD HEAD OF APOLLO

Rendered with long hair entwined with a diadem, on metal stand; 14 x 10 x 10 in.
Estimate: \$ 400.00 - \$ 600.00



Lot #235: RENAISSANCE STYLE ENGRAVED STEEL SUIT OF ARMOUR

With visored helmet, articulated arms and hand protectors, chain mail girdle and articulated legs and foot protectors, on pine stand; 5 ft. 8 in. x 24 1/2 in.
Estimate: \$ 1200.00 - \$ 1800.00



Lot #236: PAIR OF ITALIAN BAROQUE BRASS SHORT PRICKET STICKS

Each vase and urn stem with roll-over pan and dished capstan base; 6 in., 3 1/4 in. diam.
Estimate: \$ 300.00 - \$ 500.00



Lot #237: PAIR OF CONTINENTAL BRASS CANDLESTICKS

Each openwork spiral twist stem with cylindrical nozzle and dome base; 20 3/4 in., 6 1/2 in. diam.
Estimate: \$ 300.00 - \$ 600.00



Lot #238: PAIR OF DUTCH BAROQUE BRASS PRICKET STICKS

Each spiral twist and urn stem with bell-form dish enclosing pricket, the triangular base with cherub heads and claw and ball feet; 17 1/2 x 5 1/2 in.
Estimate: \$ 300.00 - \$ 600.00



Lot #239: CONTINENTAL BRONZE PATINATED TIN TOBACCO BOX AND COVER, POSSIBLY DUTCH

Of oval cushion form, the lid with recumbent lion; 5 1/4 x 6 in.
Estimate: \$ 300.00 - \$ 600.00



Lot #240: TWO ITALIAN BAROQUE BRONZE MORTARS AND ONE PESTLE

The larger with vertical ribbed or vine strips, notched handles pierced with holes and everted rim, the other with seahorse and cherub heads spaced by notched spines and fleur de lys everted rim; 2 7/8 in. and 3 3/4 in., 4 1/4 in. diam. and 5 1/4 in. diam., pestle 7 3/8 in.
Estimate: \$ 300.00 - \$ 500.00

[Back](#)

[Back to Index](#)

[Next](#)

Lots 241 - 250



Lot #241: FRENCH CARVED IVORY GROUP OF THE VIRGIN AND CHILD

Wearing flowing robes, on octagonal base and stepped velvet-covered stand; 8 x 2 1/4 in.

Estimate: \$ 500.00 - \$ 1000.00



Lot #242: DUTCH CARVED IVORY FIGURE OF A GIRL

Carved wearing rose wreath-bound bonnet and robe, and holding a crucifix, on red velvet-covered stand; 4 3/4 x 1 5/8 in.

Estimate: \$ 250.00 - \$ 350.00



Lot #243: CONTINENTAL CARVED AND PAINTED WOOD MEMENTO MORI

Carved as a skull and cross bones, on stained wood angular urn stand; 5 3/4 x 3 7/8 x 2 in.

Estimate: \$ 200.00 - \$ 300.00



Lot #244: FRENCH 16TH-CENTURY ILLUMINATED MANUSCRIPT PAGE ON VELLUM

Worked with St. Peter holding the key, within historiated letter S., matted in shadowbox frame; 12 1/4 x 11 in. (sight).

Estimate: \$ 600.00 - \$ 800.00



Lot #245: PAIR OF DUTCH BAROQUE STYLE BRASS WALL APPLIQUES SUPPORTING SMALL FOUR-LIGHT CANDELABRA

Each globe and urn back plate with s-scroll arm from which hangs the chandelier; 15 1/4 x 4 1/2 in. and 11 1/4 x 14 1/4 in.

Estimate: \$ 600.00 - \$ 800.00



Lot #246: VENETIAN TÔLE-PEINTE GONDOLA LANTERN

The green spiral stripe pole supporting the hexagonal light box with arched and lattice panels and free-standing pilasters beneath dome top with lantern, on hexagonal base; 6 ft. 8 in. x 12 in.

Estimate: \$ 700.00 - \$ 900.00



Lot #247: GERMAN BAROQUE WALNUT-INLAID ROSEWOOD GAME BOX

The hinged case with checkerboard and concentric rectangles, opening to inlaid interior, together with fifteen clear and fifteen ebony playing discs, two pair of dice, six sticks and two leather cups; 5 3/4 x 20 1/2 x 17 in.

Estimate: \$ 500.00 - \$ 700.00



Lot #248: BOLOGNESE BAROQUE WALNUT COFFRET

The hinged lid with applied moldings, the case with dark-stained buttons at the front and sides, applied molded base; 8 3/4 x 24 3/4 x 12 in.

Estimate: \$ 600.00 - \$ 800.00



Lot #249: ITALIAN BAROQUE STYLE MINIATURE CHEST OF DRAWERS

The top with outset corners, above four drawers with cherub head or turned pulls and brass shaped lattice and foliate keyhole escutcheons, on bracket feet, the sides with cherub mounts; 18 1/8 x 24 x 13 1/2 in.

Estimate: \$ 1000.00 - \$ 1500.00



Lot #250: ITALIAN CARVED, MARBLEIZED AND PARCEL-GILT MIRROR

The rectangular plate within a tiered molded frame with marbleized center band; 35 x 27 1/2 in.

Estimate: \$ 200.00 - \$ 300.00

[Back](#)

[Back to Index](#)

[Next](#)

Lots 251 - 260



Lot #251: THREE DUTCH BAROQUE TOBACCO JARS AND COVERS

In walnut and ebonized fruitwood; each ring-turned, the walnut with fruitwood stringing and brass ball-tipped knob, the others with ebonized bands and one with beading; 6 5/8 to 8 in., 5 1/2, 5 5/8 and 5 3/4 in. diam.

Estimate: \$ 200.00 - \$ 400.00



Lot #252: TWO PAIRS OF BRASS CANDLESTICKS

The first in the Régence style engraved with scrolls, loops and flowerheads, the other Victorian with ringed nozzles and ejectors; 6 1/8 x 6 5/8 in.

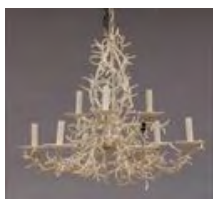
Estimate: \$ 400.00 - \$ 600.00



Lot #253: PAIR OF LOUIS XV STYLE GILT-BRONZE CANDLESTICKS

Each baluster leaf-cast stem with spiral fluted nozzle and base with panels and c-scrolls; 11 5/8 x 6 7/8 in.

Estimate: \$ 1000.00 - \$ 2000.00



Lot #254: LOUIS XV STYLE WHITE-PAINTED WROUGHT-IRON NINE-LIGHT CHANDELIER

The skeletal frame with two graduated tiers of c-scroll arms entwined with "coral" branches; 26 x 28 in.

Estimate: \$ 600.00 - \$ 800.00



Lot #255: PAIR OF LOUIS XV STYLE GILT-BRONZE URNS AND COVERS, ON WHITE MARBLE PEDESTALS

Each shaped shell-tipped stemmed bowl with shell handles, the covers modeled with shell and foliate scrollwork and with loop handles; 9 1/2 x 4 3/4 in.

Estimate: \$ 600.00 - \$ 800.00



Lot #256: LOUIS XV STYLE PORCELAIN-MOUNTED GILT-METAL THREE-LIGHT BOUILLOTTE LAMP

The floral vine-entwined stem with s-scroll arms and foliate nozzles, the center spindle with adjustable red toile-peinte shade; 24 3/4 in., 13 1/4 in. diam.

Estimate: \$ 300.00 - \$ 500.00



Lot #257: LOUIS XVI CARVED, PAINTED AND PARCEL-GILT SMALL MIRROR

The rectangular beaded molded frame with shaped ribbon and flower crest centering an oval mirror plate; 23 1/2 x 15 1/4 in.

Estimate: \$ 400.00 - \$ 600.00



Lot #258: LOUIS XVI STYLE GILT-BRONZE OVAL CENTERPIECE, SIGNED CARDEILHAC, PARIS
Pierced and chased with flowers and vines, on four ram's headed hoof feet, fitted with liner; 4 x 17 in.
Estimate: \$ 800.00 - \$ 1200.00



Lot #259: LOUIS XVI STYLE GILT-METAL THREE-LIGHT BOUILLOTTE LAMP WITH GREEN TÔLE SHADE
The stem with s-scroll arms and beaded drip pans, dished base; 25 in., 14 1/4 in. diam.
Estimate: \$ 200.00 - \$ 300.00



Lot #260: LOUIS XVI STYLE GILT-BRONZE THREE-LIGHT BOUILLOTTE LAMP WITH GREEN TÔLE SHADE
The stop-fluted stem rising from a dished base, supporting the c-scroll spiral twist arms; 27 in., 13 1/4 in. diam.
Estimate: \$ 100.00 - \$ 200.00

[Back](#)

[Back to Index](#)

[Next](#)

Lots 261 - 270



Lot #261: LOUIS XVI STYLE GILT-METAL FOUR-LIGHT CANDELABRA LAMP

The stem with ram's heads supporting an urn with mask heads and the s-scroll arms, green tôle-peinte oval shade; 31 x 16 in.

Estimate: \$ 100.00 - \$ 200.00



Lot #262: PAIR OF LOUIS XVI STYLE CARVED GILTWOOD FIVE-LIGHT WALL APPLIQUES

Each bow-tied back supporting various trophies and the leaf-clad c-scroll arms with rosettes; 4 ft. 6 in. x 22 1/4 x 12 1/4 in.

Estimate: \$ 2000.00 - \$ 3000.00



Lot #263: PAIR OF LOUIS XVI STYLE GILT-BRONZE CASSOLETTES

Each in the form of a tripod athenienne with hoof feet and fluted base, on white marble stand, the reversible lid with flambeau knob and candle nozzle; 7 5/8 in., 3 3/8 in. diam.

Estimate: \$ 600.00 - \$ 800.00



Lot #264: PAIR OF LOUIS XVI STYLE GILT-BRONZE AND PINK MARBLE CANDLESTICKS

Each urn nozzle with bow-knotted bead swags, fluting and leaf tip band, the fluted pedestal with ribbon-bound wreath and tripod feet; 5 3/8 in., 2 1/4 in.

Estimate: \$ 600.00 - \$ 800.00



Lot #265: SET OF FOUR LOUIS XVI STYLE CARVED GILTWOOD TWO-LIGHT BRAS DE LUMIÈRES

Each tapered fluted back with husk-hung urn, husk swag and drapery festoons, supporting the guilloche-tied arms, acanthus pans and fluted nozzles; 24 x 13 x 9 in.

Estimate: \$ 1500.00 - \$ 2500.00



Lot #266: LOUIS XVI CARVED GILTWOOD RECTANGULAR MIRROR

With bead and petal-tip carved frame; 22 x 17 1/2 in.

Estimate: \$ 500.00 - \$ 700.00



Lot #267: DIRECTOIRE STYLE SILVER-PLATED TWO-LIGHT BOULLIOTTE LAMP WITH GREEN-GROUND TÔLE SHADE

The stem with s-scroll arms and rising from dished base; 27 x 13 1/4 in.
Estimate: \$ 250.00 - \$ 350.00



Lot #268: CHARLES X STYLE MUSTARD-GROUND TÔLE-PEINTE TWO-LIGHT BOULLIOTTE LAMP

The two columnar arms on oval galleried base centering an oval shade with green vinework; 23 x 11 in.
Estimate: \$ 125.00 - \$ 225.00



Lot #269: CHARLES X TÔLE-PEINTE ASTRAL LAMP

With column-form standard surmounted by domed shade enclosed by pierced gallery. Together with a tôle-peinte column-form oil lamp standard with frosted glass shade; 31 and 28 1/2 in.
Estimate: \$ 100.00 - \$ 200.00



Lot #270: FRENCH MAROON-GROUND TÔLE-PEINTE WALL CLOCK

The 4 3/4 in. enamel dial within petal-tip band and an octagonal case with webbed inner tier; 17 x 14 1/2 x 4 1/2 in.
Estimate: \$ 150.00 - \$ 250.00

[Back](#)

[Back to Index](#)

[Next](#)

Lots 271 - 280



Lot #271: TWO FRENCH TÔLE-PEINTE OVAL TWO-HANDLED VERRIÈRES

Each with crenelated rim, stenciled with grape clusters and leaves or painted armorial lions; 3 5/8 x 12 1/2 in. and 4 1/4 x 12 1/4 in.

Estimate: \$ 150.00 - \$ 250.00



Lot #272: PAIR OF FRENCH BLACK TÔLE-PEINTE "LAMPES-SILVANT"

With oval plaques numbered 10546 and 10547; each column with petal tip or oak and acorn bands, on stepped base with acanthus band; height of columns 21 in.

Estimate: \$ 200.00 - \$ 300.00



Lot #273: SWEDISH EMPIRE STYLE CUT-GLASS MOUNTED SILVERED METAL FOUR-LIGHT CHANDELIER

The main ring above basket base and supporting decorative c-scrolls, joined by swags and the s-scroll light arms, joined to ceiling spray by faceted fillets; 26 x 21 1/2 in.

Estimate: \$ 800.00 - \$ 1200.00



Lot #274: EMPIRE STYLE CUT-GLASS MOUNTED TÔLE SIX-LIGHT CHANDELIER

The main ring with s-scroll arms, above a pendant bonnet and joined to feathered leaf ceiling crown; approx. 40 x 26 1/2 in.

Estimate: \$ 600.00 - \$ 800.00



Lot #275: FRENCH SCHOOL: "LES ENFANTS DESOLES" AND "LES ENFANTS JOYEUX"

Needlework and paint on fabric, 9 3/8 x 12 1/2 in. (image, sight), 17 x 19 1/8 in. (frame); together with a hand-colored and varnished print.

Estimate: \$ 400.00 - \$ 600.00



Lot #276: TWO SILKWORK PICTURES

The larger showing a 17th c. couple with hound before the steps of a tripartite classical garden folly, the other worked with a seated girl and three ewes, farmhouse to rear; 14 1/2 x 17 1/2 in. and 11 x 13 1/4 in. (frame).

Estimate: \$ 300.00 - \$ 500.00



Lot #277: ITALIAN REVERSE PAINTING ON GLASS: "AMERICA"

Depicting the personification of America wearing a feathered headdress, flanked by a hyena, ebonized and parcel gilt frame; 9 x 11 1/4 in. (frame).

Estimate: \$ 300.00 - \$ 600.00



Lot #278: FRENCH OAK ARCHITECTURAL MODEL OF A ROOF TRUSSING SYSTEM

Of stepped cruciform cross section; 20 1/4 x 30 x 21 1/2 in.

Estimate: \$ 1000.00 - \$ 2000.00



Lot #279: FRENCH CARVED SANDSTONE MODEL OF A CUPOLA

The two-tiered openwork structure with pitched pediment relief-carved with a pair of birds and fan roundel, beneath octagonal chimney; 20 x 12 x 8 1/4 in.

Estimate: \$ 700.00 - \$ 800.00



Lot #280: BYZANTINE STYLE VERDIGRIS BRONZE OIL LAMP ON STAND

The bowl modeled as a bird with opening at tail and a hinged lid at back, suspended on rearing feline supports, metal stem and ebonized stand; 9 1/4 x 4 1/2 x 5 1/2 in.

Estimate: \$ 2000.00 - \$ 3000.00

[Back](#)

[Back to Index](#)

[Next](#)

Lots 281 - 290



Lot #281: BRONZE-PATINATED FIGURE OF A BOXER, AFTER THE ANTIQUE

On black walnut stand; 12 3/4 x 7 in.

Estimate: \$ 200.00 - \$ 400.00



Lot #282: MORET: THE BORGHESE WARRIOR

Bronze, incised signature and inscribed, "Musée de Louvre," on black and veined marble stand; 12 1/2 x 15 in.

Estimate: \$ 200.00 - \$ 400.00



Lot #283: THIERMANN: "DIANA IN PRAISE"

Bronze, incised signature, on black marble bell-form stand; 12 3/4 in.

Estimate: \$ 200.00 - \$ 400.00



Lot #284: SET OF FOUR CONTINENTAL CARVED IVORY MUSICAL SATYRS

Variouly carved holding cymbals, a horn, pan pipe or a scroll, on ebonized wood bases; 4 1/4 to 4 3/4 in.

Estimate: \$ 400.00 - \$ 800.00



Lot #285: THREE SMALL FIGURES

Comprising a bronze of a child preacher with raised arms, on marble pedestal; a medieval style wood figure of a female saint; and a Japanese netsuke of a seated boy; 1 1/2 to 3 3/8 in.

Estimate: \$ 100.00 - \$ 200.00



Lot #286: NARWHAL TUSK ENCLOSED IN SHAPED METAL-BANDED TRUNK

The tusk with spiral fluted stem, the trunk with latches marked "Taylor"; tusk 3 ft. 5 in., trunk 19 x 4 ft. 5 1/2 in. x 19 in.

Estimate: \$ 800.00 - \$ 1200.00



Lot #287: RUSSIAN TURNED IVORY GOBLET AND COVER

The shaped bowl on tiered ringed stem and the cover with raised knob; 6 1/4 in., 2 7/8 in. diam.
Estimate: \$ 400.00 - \$ 600.00



Lot #288: RUSSIAN CARVED IVORY SEWING BOX

The screw-on lid with overlapping rings and grid roundels, opening to seven ivory and one wood spool, with basketweave case; 2 in., 3 1/2 in. diam.
Estimate: \$ 300.00 - \$ 500.00



Lot #289: RUSSIAN CARVED AND ENGRAVED IVORY FLUTED BOX ON STAND

The pierced screw-on lid with twelve slender oval leaves and a wood boss, the interior with separate disc, the stand with central six-leaf medallion within wave, serpentine and beaded bands, on three ringed feet; 3 1/8 in., 3 5/8 and 5 in. diam.
Estimate: \$ 600.00 - \$ 800.00



Lot #290: HENRI CODET: ART NOUVEAU HEAD OF A GIRL EMERGING FROM BLUE FLOWERS

Bronze, enamel and gilt-metal, impressed "H.ri Codet Med. d'or," the pink base with notched corners.
Estimate: \$ 1200.00 - \$ 1800.00

[Back](#)

[Back to Index](#)

[Next](#)

Lots 291 - 300



Lot #291: AUSTRIAN COLD-PAINTED METAL FIGURE OF A RABBIT IN ALERT POSE

Impressed Geschütz and Deposé; 5 1/4 x 6 1/2 in.

Estimate: \$ 800.00 - \$ 1200.00



Lot #292: BRONZE MODEL OF A STAG

Raised on a red marble base; 6 x 8 in.

Estimate: \$ 250.00 - \$ 350.00



Lot #293: AFTER A.M. BONEGAR: HORSES AND RIDER AT THE TROUGH

Bronze, 7 1/2 x 14 1/4 in.

Estimate: \$ 1000.00 - \$ 1500.00



Lot #294: ALFRED DUBUCAND (1828-1894): ARAB BOY AND HIS DONKEY

Bronze, 8 1/2 x 6 in., signed on the base.

Estimate: \$ 2000.00 - \$ 3000.00



Lot #295: THREE OVAL PORTRAIT MINIATURES: NAPOLEON, JOSEPHINE AND MADAME RECAMIER

Watercolors on ivory, signed Ratel, contained in Empire style gilt-metal frame with imperial eagles, wreath, laurel branches and bow crest; frame 9 1/2 x 13 5/8 in.

Estimate: \$ 400.00 - \$ 800.00



Lot #296: LIMOGES ENAMEL PLAQUE

In the Mannerist style; centered by a profile portrait medallion flanked by herms figures with dolphin tails; all within a foliate border with masks at the corners, now mounted in a giltwood frame; plaque 6 x 8 1/2 in.

Estimate: \$ 1000.00 - \$ 2000.00



Lot #297: FRENCH ENAMEL AND COPPER BOX

The hinged lid with 18th c. garden scene of a couple with dog, blue shell-tipped borders; 2 3/4 x 6 1/4 in.

Estimate: \$ 200.00 - \$ 300.00



Lot #298: AFTER ANTOINE-LOUIS BARYE: GOAT GRAZING

Bronze with impressed signature; 2 1/2 x 3 3/4 in.
Estimate: \$ 800.00 - \$ 1200.00



Lot #299: RUSSIAN BRONZE FIGURE GROUP OF A MARE AND FOAL

Signed "Lanceray," on rectangular base; 8 1/4 x 18 3/4 in.
Estimate: \$ 2000.00 - \$ 4000.00



Lot #300: CHARLOTTE DUNWIDDIE (1907-1995): BULL GORING

Cast plaster, signed.
Estimate: \$ 200.00 - \$ 400.00

[Back](#)

[Back to Index](#)

[Next](#)