

## Lots 201 - 210



**Lot #201: FEDERAL-STYLE TIGER MAPLE FOUR-POST BED**

6 ft. 9 in. x 6 ft. 9 in. x 7 ft. 1 in. Note: Designed by Mac II through Barton Sharpe, Ltd, NY, NY for Dogwood Farm.

Estimate: \$ 1000.00 - \$ 2000.00



**Lot #202: VICTORIAN MAHOGANY COACHING TABLE**

The folding top with rounded corners on x-stand joined by turned stretchers; 36 1/2 x 36 x 18 1/2 in. Provenance: Richard Grose Ltd, 81 Exhibition Road, London, England.

Estimate: \$ 600.00 - \$ 800.00



**Lot #203: VICTORIAN MAHOGANY COACHING TABLE**

With fixed folding top; 27 1/2 x 30 x 29 1/4 in. Provenance: Anno Domini, London, England.

Estimate: \$ 600.00 - \$ 800.00



**Lot #204: EARLY 20TH C. BROWN LEATHER-UPHOLSTERED CLUB CHAIR**

With serpentine top rail, roll over arms and short legs; 32 1/2 x 29 in. Provenance: Andrew Bewick Antiques, Lillie Road, London, England.

Estimate: \$ 250.00 - \$ 450.00



**Lot #205: CONTEMPORARY PLAID UPHOLSTERED RECAMIER**

33 x 34 x 68 in. Designed and fabricated by Mac II for Dogwood Farm.

Estimate: \$ 500.00 - \$ 1000.00



**Lot #206: PROVINCIAL THREE-LEGGED STOOL**

Raised on turned and ribbed legs; 21 3/4 x 15 x 8 in. Provenance: Hideaway House, Los angeles, CA.

Estimate: \$ 150.00 - \$ 250.00



**Lot #207: ELM STOOL**

Oval seat on ring-turned legs; 21 x 14 1/2 in.  
Estimate: \$ 75.00 - \$ 125.00



**Lot #208: GEORGE III-STYLE MAHOGANY FOLD-TOP DOUBLE GATE-LEG TABLE**

Opening to form a square chamfered surface, raised on square, tapered and fluted legs; 29 x 30 1/2 in.  
Estimate: \$ 1200.00 - \$ 1800.00



**Lot #209: GEORGE III MAHOGANY SIDE TABLE**

The rectangular mahogany veneered top with thumb-molded edge above a frieze fitted with single drawer, raised on four square tapering legs ending in four boxed casters; 28 3/4 x 32 x 18 1/4 in.  
Provenance: Richard Grose Ltd, 8 Exhibition Road, London, England.  
Estimate: \$ 800.00 - \$ 1200.00



**Lot #210: PAIR OF GEORGE II MAHOGANY D-SHAPED CONSOLE TABLES**

The plain tops and friezes on square tapered legs; 28 1/4 x 43 x 21 in.  
Provenance: From the Collection of Mrs. Frederick C. Drexler.  
Estimate: \$ 1000.00 - \$ 2000.00

## Lots 211 - 220



**Lot #211: GEORGE II WALNUT CORNER ARMCHAIR**  
The horseshoe-shaped top rail on solid baluster splats and column-turned uprights, the drop-in seat on tapered legs; 32 1/2 x 30 3/4 in. Provenance: Keith Skeel Antiques, London, England.  
Estimate: \$ 700.00 - \$ 900.00



**Lot #212: GEORGE III MAHOGANY THREE-PART D-END DINING TABLE**  
30 in. x 11 ft. 5 1/2 in. x 4 ft. Provenance: Huntington Antiques, Stow-on-the-Wold, Gloucestershire, England.  
Estimate: \$ 1500.00 - \$ 3000.00



**Lot #213: SET OF EIGHT GEORGE III-STYLE MAHOGANY DINING CHAIRS**  
Each serpentine upholstered back and seat on block legs joined by h-stretcher; 40 1/2 x 21 1/2 in. Note: Designed by Mac II for Dogwood Farm.  
Estimate: \$ 1000.00 - \$ 1500.00



**Lot #214: GEORGE III-STYLE MAHOGANY WING ARMCHAIR**  
Upholstered in buttoned pale brown leather, with shaped wings and roll-over arms, the seat on molded legs joined by h-stretchers; 43 1/4 x 33 in.  
Estimate: \$ 1000.00 - \$ 1500.00



**Lot #215: GEORGE II MAHOGANY TRIPOD TABLE**  
The circular solid mahogany top raised on birdcage support, on turned stem and raised on three cabriole legs ending in pad feet; 29 1/4 x 28 3/4 in. Provenance: Robert Stewart Reed Antiques Los Angeles, CA.  
Estimate: \$ 800.00 - \$ 1200.00



**Lot #216: PINE OCTAGONAL-TOP LOW TABLE**  
The incised top on chamfered legs joined by stretchers; 17 1/2 in. x 4 ft. 1/2 in. Provenance: Dawn Hill Antiques, New Preston, CT.  
Estimate: \$ 150.00 - \$ 250.00

**Lot #217: ELIZABETHAN-STYLE CARVED OAK  
REFECTORY TABLE**



The rectangular overhang two-plank top above a line-incised box frieze, raised on leaf-capped boldly reeded legs ending in leaf-caps and block feet; 31 1/2 x 8 ft. 4 in. x 34 1/2 in. Provenance: O'Regans Auction, Cork, Ireland, February 25, 1997. Estimate: \$ 2000.00 - \$ 4000.00

**Lot #218: ENGLISH PINE SIDEBOARD**



The rectangular top above three drawers with brass pulls, the kneehole front with beaded backboard and two pairs of pedestal doors, on bracket feet; 38 1/2 x 8 ft. 7 1/2 in. x 19 1/2 in. Provenance: Pine Mine, Los Angeles, CA. Estimate: \$ 1500.00 - \$ 2500.00

**Lot #219: SET OF EIGHT VICTORIAN CARVED OAK  
DINING CHAIRS**



Each curved top rail with dowel heads, the nailed black leather bow-fronted seat on plain rails and ring-turned front legs ending in brass thimble casters; 35 1/2 x 18 1/2 in. Provenance: McClenaghan/McCed, Pimlico, Road, London, England. Estimate: \$ 2000.00 - \$ 4000.00

**Lot #220: GEORGE III-STYLE PINE BOOKCASE**



The molded cornice above three adjustable shelves, raised on bracket feet; 4 ft. 1/4 in. x 4 ft. 2 1/2 in. x 15 in. Provenance: Pine Trader of Santa Barbara, CA. Estimate: \$ 300.00 - \$ 600.00

## Lots 221 - 230



**Lot #221: GEORGE III-STYLE PINE FULL-SIZED HEADBOARD**

The molded crest with outset corners, above four recessed panels spaced by fluted uprights; 4 ft. 14 1/4 x 6 ft. 8 in. Provenance: Pine Trader of Santa Barbara, CA.  
Estimate: \$ 300.00 - \$ 600.00



**Lot #222: TWO SIMILAR VICTORIAN FRUITWOOD HIGH STOOLS**

Each circular padded seat on partially ring-turned legs joined by box stretchers; 29 1/2 and 31 1/4 in., 12 in. diam. Provenance: Pine Trader of Santa Barbara, CA.  
Estimate: \$ 150.00 - \$ 250.00



**Lot #223: ENGLISH PINE CRICKET TABLE**

The circular three-plank top on triangular frame and flared legs joined by a shelf; 28 1/2 in., 28 1/2 in. diam. Provenance: Pine Mine, Los Angeles, CA.  
Estimate: \$ 150.00 - \$ 250.00



**Lot #224: GEORGE III-STYLE PINE CHEST OF DRAWERS**

With two short and two long drawers; 30 x 33 1/2 x 17 in. Provenance: Pine Barn, Los Angeles, CA.  
Estimate: \$ 300.00 - \$ 600.00



**Lot #225: ENGLISH PINE BLANKET CHEST**

With hinged lid, metal drop handles, base drawer with brass pulls and raised on bracket feet; 26 1/2 x 43 x 21 1/2 in. Provenance: Pine Trader of Santa Barbara, CA.  
Estimate: \$ 100.00 - \$ 200.00



**Lot #226: GEORGE III-STYLE PINE HEADBOARD**

The four-paneled board with fluted uprights and molded cornice; 4 ft. 9 3/8 in. x 5 ft. 7 in. x 3 1/2 in. Provenance: Pine Trader of Santa Barbara, CA.  
Estimate: \$ 300.00 - \$ 600.00



**Lot #227: PINE-TOP FRUITWOOD SHOP TABLE**

The top with applied edge, above five push-through drawers with gilt-metal pulls, on square, tapered legs; 32 in. x 8 ft. 3 1/2 in. x 22 1/4 in. Provenance: Charles Haver Antiques, Roxbury, CT.  
Estimate: \$ 800.00 - \$ 1200.00



**Lot #228: ENGLISH PINE LOW TABLE**

The overhang top above plain frieze and raised on turned legs; 19 3/4 x 6 ft. x 41 in.  
Estimate: \$ 150.00 - \$ 250.00



**Lot #229: CONTINENTAL PINE BLANKET CHEST**

The hinged top opening to reveal a glove box with two drawers, the front with three panels and the whole raised on bun feet; 26 1/2 in. x 4 ft. 3 1/2 in. x 26 1/4 in. Provenance: Pine Trader of Santa Barbara, CA.  
Estimate: \$ 400.00 - \$ 800.00



**Lot #230: PINE BAKER'S RACK AND PINE COAT RACK**

The one with five slatted tiers, the coat rack with ten metal hooks on trestle supports; 4 ft. 2 3/4 in. x 33 x 15 1/4 in. and 5 ft. 5 in. x 33 1/2 x 24 in. Provenance: Eleish Van Breems Antiques, Woodbury, CT. and Pine Trader of Santa Barbara, CA.  
Estimate: \$ 400.00 - \$ 800.00

## Lots 231 - 240



**Lot #231: PAIR OF PINE TWO-TIERED SIDE TABLES**  
18 1/2 x 20 3/4 x 27 3/4 in. Provenance: British Country Antiques, Woodbury, CT.  
Estimate: \$ 300.00 - \$ 600.00



**Lot #232: GEORGE III-STYLE PINE WAINSCOT BENCH**  
The high back with applied molded panels flanked by armrests joined by a plank seat, block legs; 4 ft. 3 1/2 in. x 5 ft. 11 1/2 in.  
Provenance: Pine Trader of Santa Barbara, CA.  
Estimate: \$ 700.00 - \$ 900.00



**Lot #233: ENGLISH YEWOOD SMOKING TABLE**  
The oval top with waved gallery and raised d-shaped end with hinged lid, on flared legs ending in brass box casters; 24 1/2 x 20 1/2 in. Together with a small table with indistinctly signed needlework top.  
Estimate: \$ 250.00 - \$ 350.00



**Lot #234: GEORGE III INLAID MAHOGANY NIGHT STAND**  
The top with diamond-banded edge above two drawers with oval panels and brass oval drop handles, the sides with handled and raised on bracket feet; 28 3/4 x 23 x 17 1/4 in. Provenance: From the Collection of Mrs. Frederick C. Drexler.  
Estimate: \$ 300.00 - \$ 500.00



**Lot #235: GEORGE III PROVINCIAL OAK SIDE CHAIR**  
With pierced beaker splat, plank seat and block legs joined by stretchers; 35 1/2 x 19 in.  
Estimate: \$ 150.00 - \$ 250.00



**Lot #236: UPHOLSTERED SLEEPER SOFA**  
32 1/2 x 6 ft. 10 1/2 in. x 37 in.  
Estimate: \$ 400.00 - \$ 800.00



**Lot #237: CONTEMPORARY UPHOLSTERED SOFA**  
33 1/2 x 5 ft. 10 in. x 38 in. Note: Designed by Mac II for Dogwood Farm, manufactured by Carlyle and fabricated by Hinson & Co.  
Estimate: \$ 600.00 - \$ 800.00



**Lot #238: CAST-IRON COLUMN-FORM LAMP AND A STAFFORDSHIRE SPANIEL LAMP**  
The one with flared fluted shaft with acanthus band surmounted by lion's heads on octagonal base, the other modeled seated; 13 3/4 and 38 1/2 in.  
Estimate: \$ 150.00 - \$ 250.00



**Lot #239: PAIR OF WROUGHT-IRON HEXAGONAL WALL LANTERNS AND A VERDIGRIS METAL THREE-LIGHT CHANDELIER FRAME**  
The tapered glazed sides beneath waved overhang roof; 14 x 12 in. and 23 x 21 3/4 in. Provenance: McClenaghan, McCed, Pimlico Road, London, England.  
Estimate: \$ 75.00 - \$ 125.00



**Lot #240: CHINESE PAPER-WRAPPED BLOCK-FORM TABLE LAMP**  
With liner of characters, on stained wood base; 15 x 9 in.  
Estimate: \$ 100.00 - \$ 200.00



## Lots 241 - 250



**Lot #241: ASSEMBLED PAIR OF GREEN CRACKLE-GLAZED POTTERY TABLE LAMPS**

Each baluster-form bowl on faux-bois stand; 27 3/4 in.  
Estimate: \$ 150.00 - \$ 250.00



**Lot #242: ENGLISH MOLDED BROWN-GLAZED POTTERY FIGURAL LAMP AND TWO COLUMN-FORM LAMPS**

The one with four addorsed seated lions, on molded base, the other two in brass or bronze patinated metal, with fluted shafts and Corinthian capitals; 16 3/4 to 28 1/2 in.  
Estimate: \$ 200.00 - \$ 400.00



**Lot #243: PAIR OF BRASS CANDLESTICK LAMPS**

Retailed by Baldwin; each segmented stem with broad drip pan, cylindrical nozzle and circular foot; 26 1/4 in.  
Estimate: \$ 50.00 - \$ 75.00



**Lot #244: PAIR OF PINE VASE-FORM TABLE LAMPS**

Each of pear form on block base, bronze-patinated metal stepped stands; 31 1/2 in.  
Estimate: \$ 100.00 - \$ 200.00



**Lot #245: PAIR OF MARBLEIZED METAL URN-FORM TABLE LAMPS**

Each ovoid bowl with lion head ring drop handles, on square base; 19 in.  
Estimate: \$ 100.00 - \$ 200.00



**Lot #246: ENGLISH SILVER-PLATED CANDLESTICK LAMP AND A WHITE-PAINTED WIREWORK LAMP**

The one with Corinthian fluted column on stepped base, the other of openwork urn form with two handles and ring base; 24 1/2 and 31 in.  
Estimate: \$ 200.00 - \$ 300.00



**Lot #247: NEOCLASSICAL-STYLE PATINATED AND GILT-METAL URN LAMP**

The ovoid bowl with anthemion-backed loop handles, on veined red marble and metal stepped base; 34 1/2 in. Provenance: Supplied by David Anthony Easton.

Estimate: \$ 100.00 - \$ 150.00



**Lot #248: TWO GREEN-GLAZED POTTERY ARTICLES AND A VICTORIAN PAPIER-MÂCHÉ CAKE TRAY**

Comprising a 13 3/4 in. scallop-rimmed tray and a fluted stem dish marked Hull, the tray with spaniel head and gilt-metal swing handle; 10 1/2 in. diam.

Estimate: \$ 125.00 - \$ 250.00



**Lot #249: EDWARDIAN MAHOGANY THREE-DIVISION CANTERBURY**

With applied cross bars, the base containing a drawer with brass pull, the block legs ending in box casters; 19 x 18 3/4 x 13 1/4 in. Provenance: Michel Taschereau Antiques, Toronto, Canada.

Estimate: \$ 700.00 - \$ 900.00



**Lot #250: UPHOLSTERED MODERN SOFA**

34 1/2 x 8 ft. 6 1/2 x 48 in. Note: Designed by Mac II for Dogwood Farm based on a design in Bill Blass's New York Sutton Place apartment, fabricated by DeAngelis.

Estimate: \$ 1200.00 - \$ 1800.00

## Lots 251 - 260



**Lot #251: UPHOLSTERED MODERN SOFA**  
34 1/2 x 8 ft. 6 1/2 x 48 in. See note to previous lot.  
Estimate: \$ 1200.00 - \$ 1800.00



**Lot #252: LEATHER-COVERED BISON-FORM STOOL**  
With shaggy head and shoulders; 21 1/2 x 30 1/2 in.  
Estimate: \$ 300.00 - \$ 600.00



**Lot #253: LEATHER-COVERED HIPPOPOTAMUS-FORM STOOL**  
16 x 32 1/2 in. Provenance: Crouch & Fitzgerald, New York, manufactured by Omersa and Company, Lincoln, England.  
Estimate: \$ 500.00 - \$ 700.00



**Lot #254: INDIAN METAL-MOUNTED LOW TABLE**  
The three-plank top with iron nailheads, above a plain frieze raised on ringed column legs with iron brackets ending in square feet; 19 in. x 5 ft. 10 1/2 in. x 41 1/2 in. Provenance: Paul Andrews Antiques, London, England.  
Estimate: \$ 300.00 - \$ 600.00



**Lot #255: ENGLISH WROUGHT-IRON FENDER WITH TAN LEATHER SEAT PANEL**  
Of angular u-shape, on spindles and molded base; 22 3/4 in. x 6 ft. 11 in. x 24 1/2 in.  
Estimate: \$ 700.00 - \$ 900.00



**Lot #256: GEORGE III MAHOGANY DROP-LEAF TABLE**  
27 1/2 x 41 in. x 4 ft. 7 in. (fully extended). Provenance: Richard Grose Ltd, 8 Exhibition Road, London, England.  
Estimate: \$ 800.00 - \$ 1200.00



**Lot #257: VICTORIAN-STYLE UPHOLSTERED RECAMIER**  
36 1/2 x 45 1/2 x 73 in. Note: Designed by Mac II for Dogwood Farm based on a design in Bill Blass's New York Sutton Place apartment, fabricated by DeAngelis.  
Estimate: \$ 1200.00 - \$ 1800.00



**Lot #258: VICTORIAN-STYLE UPHOLSTERED RECAMIER**

36 1/2 x 45 1/2 x 73 in. Note: Designed by Mac II for Dogwood Farm based on a design in Bill Blass's New York Sutton Place apartment, fabricated by DeAngelis.

Estimate: \$ 1200.00 - \$ 1800.00



**Lot #259: REGENCY MAHOGANY SECRETARY BOOKCASE**

The molded plinth above a pair of glass doors enclosing two permanently affixed glass shelves, with lit interior, above a lower section fitted with secretary drawer, above two cupboard doors and ending in a plinth molded base; 7 ft. 4 in. x 42 1/2 x 21 1/8 in.

Provenance: Richard Grose Ltd, 8 Exhibition Road, London, England.

Estimate: \$ 2500.00 - \$ 4500.00



**Lot #260: PAIR OF GEORGE III CARVED MAHOGANY OPEN ARMCHAIRS**

Each with serpentine padded back and armrests, the serpentine seat on molded and bead-and-reel canted legs joined by h-stretcher; 37 1/2 x 26 1/2 in.

Estimate: \$ 4000.00 - \$ 8000.00

[Back](#)

[Back to Index](#)

[Next](#)

## Lots 261 - 270



**Lot #261: VICTORIAN MAHOGANY BENCH**

The rectangular padded seat on narrow rails, raised on lyre-form and x-supports joined by h-stretcher; 19 1/2 x 5 ft. 1 in. x 17 1/2 in.

Provenance: Nicky Haslam at NH Design, London.

Estimate: \$ 700.00 - \$ 900.00



**Lot #262: FRENCH PROVINCIAL WALNUT SMALL TRESTLE TABLE**

The top with rounded corners, raised on block supports joined by an h-stretcher and ending in shaped trestle; 29 1/2 x 38 3/4 x 23 3/4 in.

Estimate: \$ 800.00 - \$ 1200.00



**Lot #263: IRON-MOUNTED CHEST AND A PINE CHEST**

The one with nailed banded hinged lid above a dove-tailed case with drop handles, the other with nailed case and applied base; 17 1/2 x 38 1/2 in. and 24 x 38 in.

Estimate: \$ 200.00 - \$ 300.00



**Lot #264: AMERICAN CLASSICAL PAINT-DECORATED CHEST OF DRAWERS**

The top with two glove box drawers above a case fitted with four drawers, ending in bracket feet; 4 ft. 2 in. x 43 x 19 1/2 in.

Estimate: \$ 700.00 - \$ 900.00



**Lot #265: STAINED WOOD WASHSTAND**

The three-quarter galleried top above two drawers with wood pulls, the legs joined by a shelf, on double scroll feet; 36 1/2 x 24 x 15 1/4 in.

Estimate: \$ 150.00 - \$ 250.00



**Lot #266: GRAIN-PAINTED PINE SIDE CABINET**

36 3/4 x 30 x 15 1/2 in. Provenance: Pine Mine, Los Angeles, CA.

Estimate: \$ 75.00 - \$ 125.00



**Lot #267: ENGLISH ELM SPINDLE-BACK ARMCHAIR**  
The curved top rail above three spindles, the seat on flared legs joined by h-stretcher; 30 3/4 x 22 1/2 in.  
Estimate: \$ 150.00 - \$ 250.00



**Lot #268: PAINTED D-SHAPED CONSOLE TABLE**  
The paint-decorated top raised on a triangular frieze and supported by three square tapering legs; 27 3/4 x 31 3/4 x 17 1/2 in.  
Estimate: \$ 300.00 - \$ 600.00



**Lot #269: GREEN PAINTED BIN**  
With lift top; 29 1/2 x 24 x 20 in. Provenance: Charles Haver Antiques, Roxbury.  
Estimate: \$ 250.00 - \$ 350.00



**Lot #270: TRESTLE STOOL AND A BLACK-PAINTED MINIATURE STOOL**  
The one with d-shaped sides, each on arched trestles; 15 x 19 3/4 in. and 5 1/2 x 15 3/4 in.  
Estimate: \$ 150.00 - \$ 250.00

## Lots 271 - 280



**Lot #271: AMERICAN BLUE-PAINTED BLANKET CHEST AND A SMALL PINE CHEST**

The one with dove-tailed case and applied base, the other with hinged lid incised P.P. over R; 17 x 43 1/2 x 19 in. and 12 3/4 x 22 x 14 in.

Estimate: \$ 250.00 - \$ 450.00



**Lot #272: FEDERAL-STYLE BLUE-PAINTED MANTELPIECE**

The bowed shelf with outset corners, above central oblong diamond and two six-point stars, on molded uprights and block bases; 4 ft. 5 1/2 in. x 4 ft. 10 in. x 6 in.

Estimate: \$ 200.00 - \$ 400.00



**Lot #273: BYRON DAVIS: "121250 TRANSFORMATIONS," 1991**

Serpentine marble, 10 1/2 x 7 x 12 in. Provenance: Acquired from the artist; Courtney Cramer, Los Angeles; Douglas S. Cramer, Roxbury, CT. Note: Proceeds from the sale of this lot will be donated to St. Jude Children's Research Hospital in honor of Marlo Thomas.

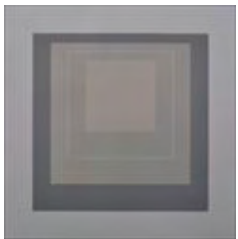
Estimate: \$ 600.00 - \$ 800.00



**Lot #274: JOEL SHAPIRO (b. 1941): UNTITLED (BLACK HAT), 1980**

Print, 21 3/4 x 29 1/2 in., signed, numbered 11/30 and dated '80. Provenance: Christie's, New York, Contemporary Prints and Multiples, Sale no. 37342, 7 November 1996, lot 811; Douglas S. Cramer, Roxbury, CT.

Estimate: \$ 200.00 - \$ 400.00



**Lot #275: JOSEF ALBERS: (1888-1976): "WHITE LINE SQUARE XIV," 1966**

Lithograph, 21 x 21 in., initialed, titled, dated and numbered 77/125 in lower margin, (JA66-1164): Gemini G.E.L. publishing catalogue no. 15. Provenance: Asher/Faure Inc., Los Angeles, 30 August 1979; Douglas S. Cramer, Roxbury, CT.

Estimate: \$ 1500.00 - \$ 2500.00



**Lot #276: ROBERT MOTHERWELL (1915-1991):  
CAPRICCIO, 1961**

Pochoir print on paper, 20 3/8 x 15 5/8 in., initialed in print, signed in pencil and numbered 51/200. Provenance: Mary Boone Gallery, New York (label verso); John A. Torson, Modern Prints and Drawings; Douglas S. Cramer, Roxbury, CT. Literature: Illustrated in Terenzio, "Motherwell and Black," catalogue no. 17. Note: Proceeds from the sale of this lot will be used to help fund Miami City Ballet at New York City Center Fall for Dance in September. Estimate: \$ 1000.00 - \$ 2000.00



**Lot #277: ED RUSCHA (b. 1921): "MADE IN CALIFORNIA,"  
1971**

Lithograph in colors, 20 1/2 x 28 1/2 in., edition 100; initialed, dated, inscribed "Printer's Proof" lower left. Provenance: Cirrus Editions, Los Angeles; Douglas S. Cramer, Roxbury, CT. Note: Proceeds from the sale of this lot will be used to help fund Miami City Ballet at New York City Center Fall for Dance in September. Estimate: \$ 1500.00 - \$ 3000.00



**Lot #278: RICHARD ARTSCHWAGER (b. 1923): "PORT,"  
1991**

Acrylic on panel, enamel and formica on wood, 19 in. diam. and 3/14 in. deep, signed, dated '91, numbered 2/50 and titled on verso. Note: Proceeds from the sale of this lot will be donated to the Miami City Ballet. Estimate: \$ 3000.00 - \$ 5000.00



**Lot #279: JIM DINE (b. 1935): "CORNER BRACE" (FROM  
AVANT GARDE BOOK I), 1962**

Etching, 9 3/4 x 7 1/2 in., signed, dated and numbered 15/60. Provenance: John A. Torson Gallery, New York; Douglas S. Cramer, Roxbury, CT. Note: Proceeds from the sale of this lot will be donated to the Cincinnati Art Museum. Estimate: \$ 600.00 - \$ 800.00



**Lot #280: ROBERT INDIANA (b. 1928): "ERR" (FROM  
AVANT GARDE BOOK), 1963**

Etching, 9 3/4 x 7 1/2 in., signed and numbered 15/60; from Avant Garde Book" International Anthology of Contemporary Engraving: The International Avant Garde America Discovered," Vol. 5 (529), Galeria Schwartz, publishing. Provenance; Associated Artists, New York, Douglas S. Cramer, Roxbury, CT. Estimate: \$ 700.00 - \$ 900.00

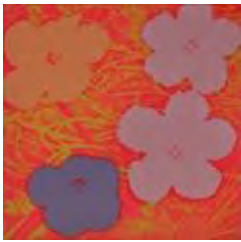


## Lots 281 - 290



**Lot #281: ROBERT RAUSCHENBERG (1925-2008):  
"BICYCLES"**

Offset lithograph in colors, 19 3/4 x 14 5/8 in. (sheet), signed, numbered 81/175 and dated '96 lower right. Note: Proceeds from the sale of this lot will be donated to the Miami City Ballet.  
Estimate: \$ 2000.00 - \$ 4000.00



**Lot #282: ANDY WARHOL (1928-1987): FLOWERS (F. & S.  
II. 69)**

Screenprint, 1970, 36 x 36 in., signed and numbered 175/250.  
Provenance: Dr. Marty Nathan; Margo Leavin Gallery, Los Angeles, 31 December 1985; Douglas S. Cramer, Roxbury, CT.  
Note: This lot is purportedly signed on the verso according to the information given to us by the consignor. Proceeds from the sale of this lot will be donated to the NY City Center restoration fund.  
Estimate: \$ 20,000.00 - \$ 40,000.00



**Lot #283: ELLSWORTH KELLY (b. 1923): SHAPE (BLACK  
CURVE)**

Lithograph in colors, 15 3/8 x 15 1/4 in. (image, sight), dedicated lower left "for Doug & Hugh," numbered AP 7/20 and signed lower right. Proceeds from the sale of this lot will be donated to the Bass Museum.  
Estimate: \$ 3500.00 - \$ 4500.00



**Lot #284: BRIDGET RILEY (b. 1931): UNTITLED  
(SPHERICAL DISK), 1964**

Screenprint, 30 x 14 in., signed and numbered 5/50; Kelpra Studios printing. Provenance: Robert Fraser Gallery, 8 December 1965; Douglas S. Cramer, Roxbury, CT. Note: Proceeds from the sale of this lot will be donated to the NY City Center restoration fund.  
Estimate: \$ 8000.00 - \$ 12,000.00



**Lot #285: ROBERT COTTINGHAM (b. 1935). "HOT" 1973**

Lithograph in colors, 23 x 22 7/8 in., signed lower left and numbered 14/100 lower right. Landfall Press Publishing.  
Provenance: Margo Leavin Gallery, Los Angeles, 27 July 1973; Douglas S. Cramer, Roxbury, CT.  
Estimate: \$ 1200.00 - \$ 1800.00



**Lot #286: CLAES OLDENBERG (b. 1929): "SOFT TOILET #2," 1972**

Lithograph, 20 x 14 1/2 in., initialed lower right, edition 22/25, Gemini G.E.L. publishing (catalogue #414). Provenance: Gemini G.E.L., Los Angeles; Douglas S. Cramer, Roxbury, CT. Note: Proceeds from the sale of this lot will be used to help fund Miami City Ballet at New York City Center Fall for Dance in September. Estimate: \$ 1200.00 - \$ 1800.00



**Lot #287: FRANK STELLA (b. 1936): "REFERENDUM 70," 1970**

Color silkscreen, 40 x 40 in., signed, numbered 164/200, and dated 70 in lower margin; published by Gemini G.E.L., catalogue no. 229. Provenance: Margo Leavin Gallery, Los Angeles; Gemini G. E.L., Los Angeles, 22 August 1972; Douglas S. Cramer, Roxbury, CT. Literature: Axsom 49. Estimate: \$ 4500.00 - \$ 6500.00



**Lot #288: JIM DINE (b. 1935): "THE WOODCUT BATHROBE," 1975**

Lithograph and woodcut, 36 x 24 in., dedicated "for Doug from Jim Dine," numbered 19/60 and dated 1975. Provenance: Margo Leavin Gallery, Los Angeles, 5 April 1977; Douglas S. Cramer, Roxbury, CT. Literature: Krens, Williams College, 1977. Estimate: \$ 4500.00 - \$ 6500.00



**Lot #289: RICHARD SERRA (b. 1939): UNTITLED (FILM FORUM PRINT), 1990**

Screenprint on PTI Supra 100, 26 1/2 x 19 1/2 in., signed and dated in pencil, numbered 331/500. Provenance: Douglas S. Cramer, Roxbury, CT. Note: Proceeds from the sale of this lot will be donated to MOCA, North Miami. Estimate: \$ 500.00 - \$ 1000.00



**Lot #290: JAMES ROSENQUIST (b. 1933): "THE FLAME STILL DANCES ON LEO'S BOOK," 1997**

Lithograph in colors, 37 x 27 in., titled, signed, dated and numbered XX/XC in lower margin. Provenance: Douglas S. Cramer, Roxbury, CT. Note: Proceeds from the sale of this lot will be donated to the Miami Museum of Art. Estimate: \$ 1500.00 - \$ 3500.00

## Lots 291 - 300



**Lot #291: PAUL CAPONIGRO (b. 1932): "STREAM, READING, CONNECTICUT," 1968 (LATER PRINTING)**

Gelatin silver print, 14 x 17 in., signed lower right. Provenance: Douglas S. Cramer, Roxbury, CT.  
Estimate: \$ 1000.00 - \$ 2000.00



**Lot #292: DAVID HOCKNEY (b. 1937): "PICTURE OF MELROSE AVENUE IN AN ELABORATE GOLD FRAME," 1965**

Lithograph, 30 x 22 in., signed, dated and numbered 8/85; from the portfolio of six entitled "A Hollywood Collection," editions Electo publishing. Provenance: Art Lending Services, Museum of Modern Art, New York; Everyman Gallery, New York (195-5753); Gagosian Gallery, New York, 1 October 1980; Douglas S. Cramer, Roxbury, CT.

Estimate: \$ 4000.00 - \$ 6000.00



**Lot #293: GARY STEPHAN (b. 1942): "STUDIES FOR MOON-SILVER," 1983**

Graphite and ink on paper, 5 x 8 in., 5 x 3 in. and 5 x 3 in., each signed, dedicated "for Doug C." and dated 1980. Provenance; Gift of the artist; Douglas S. Cramer, Roxbury, CT.

Estimate: \$ 500.00 - \$ 700.00

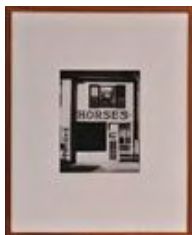


**Lot #294: SUSAN ROTHENBERG (b. 1945): "BONEMAN," 1986**

Mezzotint on wood veneer, 30 x 20 13/16 in., signed, numbered 11/42 and dated 86. Provenance: Gemini G.E.L., Los Angeles, 26 September 1986; Douglas S. Cramer, Roxbury, CT. Exhibited: Gemini G.E.L., Los Angeles, 30th Anniversary exhibition for the Pacific Design center, L.A. 16 January - 28 February 1997.

Illustrated: Gemini G.E.L. Recent Prints and Sculpture by Charles Ritchie, Illustrated p. 17.

Estimate: \$ 3000.00 - \$ 5000.00



**Lot #295: SHERRIE LEVINE (b. 1947): "HORSES (AFTER WALKER EVANS)," 1997**

Reserve gelatin silver print, 10 x 8 in., numbered 8/15. Provenance: Douglas S. Cramer, Roxbury, CT. Note: Proceeds from the sale of this lot will be donated to St. Jude's Children's Research Hospital in memory of Courtney Cramer.

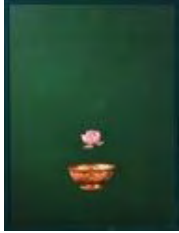
Estimate: \$ 4000.00 - \$ 6000.00

**Lot #296: SARAH CHARLESWORTH (b. 1947): "LOTUS BOWL," 1986**

Laminated cibachrome print, 41 1/4 x 31 1/8 in., initialed and stamped lower right, edition 3/3. Provenance: Acquired from the artist; Margo Leavin Gallery, Los Angeles, 17 July 1986, Douglas S. Cramer, Roxbury, CT. Exhibited: "Knowledge: Aspects of Contemporary Art," University of California, Santa Barbara Art Museum, 8 January - 23 February 1992; Santa Monica Museum of Art, 2 April - 28 June 1992 "Sarah Charlesworth: A Retrospective," SITE Santa Fe, New Mexico, 1 November 1997 - 25 January 1998; Museum of Contemporary Art, San Diego, 23 March - 13 June 1998; National Museum of Women in the Arts, 9 July - 23 September 1998; Cleveland Center for Contemporary Art, 20 November 1998 - 24 January 1999 "Some Assemblage Required: Collage in Post-War America," Everson Museum of Art, Syracuse, NY, September 27, 2002 - January 26, 2003; Madison Art Center, Madison, Wisconsin, June 8, 2003 - August 17, 2003; Polk Museum of Art, Lakeland, Florida, August 30, 2003 - October 26, 2003.

Literature: Galleries Magazine International Edition, number 14, August/September 1986, illus. p. 47., Catalogue for exhibition "Sarah Charlesworth: A Retrospective," SITE Santa Fe, New Mexico, November 1997 - January 1999 p., 57 full color illustration. Note: Proceeds from the sale of this lot will be donated to MOCA, North Miami.

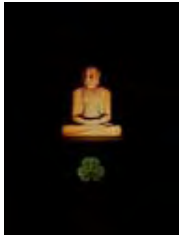
Estimate: \$ 3000.00 - \$ 5000.00



**Lot #297: SARAH CHARLESWORTH (b. 1947): "BUDDHA," 1985**

Laminated cubachrome plate, 41 x 31 in., initialed and stamped lower right, edition 2/3. Provenance: Acquired from the artist; Margo Leavin Gallery, New York, 28 April 1987; Douglas S. Cramer, Roxbury, CT. Exhibited: "Sarah Charlesworth," Margo Leavin Gallery, Los Angeles, 25 April - 23 May 1987. Note: Proceeds from the sale of this lot will be donated to the Miami Museum of Art.

Estimate: \$ 3000.00 - \$ 5000.00



**Lot #298: FRANCESCO CLEMENTE (b. 1952): "ST. VINCENT," 1989**

Etching, 21 7/8 x 15 5/8 in., signed and numbered 43/55. Provenance: Sperone, Westwater, New York; Christie's, New York, 2 November 1984; Douglas S. Cramer, Roxbury, CT.

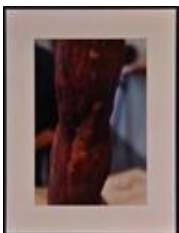
Estimate: \$ 500.00 - \$ 1000.00



**Lot #299: KIKI SMITH (b. 1954): UNTITLED, 1992**

C-print, 29 x 22 in., edition 2/3. Provenance: Shoshanna Wayne Gallery, Santa Monica, CA; Museum of Contemporary Art, Los Angeles, Art Auction 11 February 1994; Douglas S. Cramer, Roxbury, CT. Exhibited: Museum of Contemporary Art, Temporary Contemporary, 21 May - 2 June 1994. Literature: Museum of Contemporary Art, Los Angeles; Sixth Biennial Art Auction Catalogue, [lot 204A] (addendum to the auction).

Estimate: \$ 2000.00 - \$ 4000.00



**Lot #300: LAWRENCE GIPE (b. 1962): "STUDY A" FROM  
"THEMES FOR A FIN DE SIECLE (ELEGY)," 1992**



Aquatint and etching, 22 x 30 in., printed in yellow, black and scarlet on Arches cover paper, signed and numbered API/VII DC below image; 3 Immerli Archives, Rutgers University Publisher, on the occasion of the RAPS portfolio, Rutgers Archives for Printmaking studies with chop of Pelavin Editions. Provenance: Gift of the artist, 1992; Douglas S. Cramer, Roxbury, CT. Exhibited: Zimmerli Archives, Rutgers University, October 1992; Levinson/Kane, Boston, 17 October - 13 November 1992.  
Estimate: \$ 300.00 - \$ 500.00

[Back](#)

[Back to Index](#)

[Next](#)