

Lots 201 - 210



**Lot #201: S.H. BLACK (PUBLISHER, 1859):
"DECLARATION OF INDEPENDENCE OF THE UNITED
STATES OF AMERICA"**
Gilt-metal relief plaque, mahogany-veneered frame; frame: 10 1/2
x 9 3/4 in.
Estimate: \$ 150.00 - \$ 250.00



**Lot #202: WILSON MACDONALD, AFTER JEAN-
ANTOINE HOUDON: BUST OF GEORGE WASHINGTON**
Bronze, cast by Henry-Bonnard Bronze Co., copyright 1898, with
relief certificate and oath by the artist; 18 1/4 x 13 in.
Estimate: \$ 2000.00 - \$ 4000.00



**Lot #203: CAST STONE 1/2-ROUND PROFILE HEAD OF
GEORGE WASHINGTON**
Modeled facing destra, crowned with laurel wreath; 16 x 9 1/2 x 2
1/2 in.
Estimate: \$ 150.00 - \$ 250.00



Lot #204: TWO FRAMED HAND-COLORED ENGRAVINGS
The one, "The Protector of his Country, The supporters of
Liberty...", showing Washington on his horse, giltwood frame; the
other published by J. Chereau, "Representation du feu Herring a
nouvelle York...19 Semptembre 1776...", pierced paper back,
ebonized and parcel gilt frame.
Estimate: \$ 150.00 - \$ 250.00



**Lot #205: BUSHONG & CO., PORTLAND, OR.
(PUBLISHER): "1905 LEWIS & CLARK CENTENNIAL...
COMMEMORATIVE DIPLOMA"**
Lithograph, flanked by Ionic columns entwined with 16 state
names, supporting a view of Mt. Hood and the Columbia
peninsula, applied gilt badge, oak frame; 26 1/2 x 21 1/2 in.
(frame).
Estimate: \$ 300.00 - \$ 500.00



Lot #206: PHILADELPHIA-INTERNATIONAL-EXHIBITION CENTENNIAL MEMENTO

Machine woven silk by A. Larcher, after J.B. Champromy, incised ebonized and parcel gilt frame; 10 3/4 in. x 6 in. (memento), 16 x 11 1/4 in. (frame).

Estimate: \$ 75.00 - \$ 125.00



Lot #207: TWO RELIEF-CAST METAL BOOKENDS

The one of Abraham Lincoln and the other Theodore Roosevelt; 5 3/8 x 6 in. and 7 1/2 x 5 3/4 in.

Estimate: \$ 100.00 - \$ 200.00



Lot #208: AFTER NINI: PORTRAIT OF BENJAMIN FRANKLIN

Relief pressed board with signature, the head facing sinistra, in forest green concave rondel, mint green mat and ebonized relief-applied oak frame; 15 1/4 x 15 1/4 in.

Estimate: \$ 150.00 - \$ 250.00



Lot #209: ALLEN C. NEWMAN SR.: THEODORE ROOSEVELT, "ONE HUNDRED PER CENT AMERICAN"

Copper relief plaque, signed lower right and with 1919 copyright; 9 1/2 x 6 in.

Estimate: \$ 100.00 - \$ 200.00



Lot #210: BRONZE-PATINATED SPELTER FIGURE OF GEORGE WASHINGTON

Modeled standing by a stump, holding a scroll, impressed Guillem; 22 1/4 in.

Estimate: \$ 100.00 - \$ 200.00

Lots 211 - 220



**Lot #211: PORTRAIT HEAD OF
THEODORE ROOSEVELT**

Bronze relief plaque with addorsed P monogram
and copyright; 7 1/4 x 4 3/4 in.

Estimate: \$ 100.00 - \$ 200.00



**Lot #212: CARVED WALNUT BUST OF
BENJAMIN FRANKLIN**

Unsigned, fitted to a shaped base; 13 in., overall:
18 1/4 in.

Estimate: \$ 100.00 - \$ 300.00



Lot #213: AFTER HOUDON: "FRANKLIN"

Bronze bust, titled, incised H.B. within a
lozenge, above 2242; 9 7/8 x 7 1/2 in.

Estimate: \$ 300.00 - \$ 600.00



**Lot #214: AMERICAN SCHOOL: BUST OF
LINCOLN**

Ivory painted plaster; 16 3/4 in.

Estimate: \$ 100.00 - \$ 200.00



Lot #215: AMERICAN SCHOOL (E. 20TH C.): BUST OF WASHINGTON

Patinated metal, impressed Bronze Art; 14 in.

Estimate: \$ 200.00 - \$ 300.00



Lot #216: PLASTER BUST OF WASHINGTON

Indistinctly signed; 14 in.

Estimate: \$ 100.00 - \$ 200.00



Lot #217: GEORGE E. BISSELL: BUST OF ABRAHAM LINCOLN

Gilt bronze, with impressed Geo. E. Bissell, copyright mark and Gorham Co. Founders; 16 1/2 x 10 1/2 in.

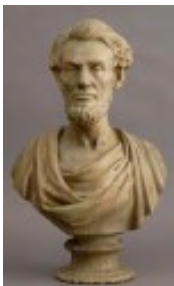
Estimate: \$ 400.00 - \$ 600.00



Lot #218: AMERICAN SCHOOL (E. 20TH C.): "WASHINGTON THE ORATOR"

Lead figure, modeled standing with right arm extended, stepped pedestal; 17 x 6 1/2 in.

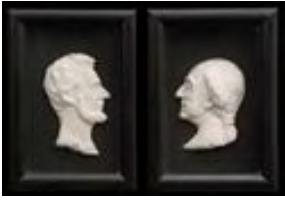
Estimate: \$ 600.00 - \$ 800.00



Lot #218A: AFTER J.V. PRIOR: BUST OF ABRAHAM LINCOLN

Plaster, incised with signature and "288 Washington St., Newark;" 29 x 20 in.

Estimate: \$ 200.00 - \$ 300.00



**Lot #219: RELIEF COMPOSITION
PROFILES: WASHINGTON AND
LINCOLN**

Contained in shadow box frames; 6 1/4 x 4 1/2
in.

Estimate: \$ 200.00 - \$ 300.00



**Lot #220: AMERICAN SCHOOL (E. 20TH
C.): BUST OF WASHINGTON**

Patinated metal, on verde antico marble base; 11
1/2 in.

Estimate: \$ 200.00 - \$ 300.00

[Back](#)

[Next](#)

Lots 221 - 230



Lot #221: SILHOUETTE PROFILE PORTRAIT OF DEWITT CLINTON

Print on linen with Trade Mark, "Hiawatha," bird's eye maple and parcel gilt frame; 16 x 13 in. Provenance: Property from the Estate of Janet Welldon Graham, Julia Hoyt Welldon Graham, Julia Hoyt Welldon and the Hoyt family of New York City and Staatsburgh, New York"

Estimate: \$ 200.00 - \$ 300.00



Lot #222: AMERICAN SCHOOL: PORTRAIT OF A MAN

Oil on canvas, 24 x 20 in., unsigned. Provenance: From Oldwalls, the home of sculptor Chester Beach.

Estimate: \$ 700.00 - \$ 900.00



Lot #223: THREE PORTRAITS OF ABRAHAM LINCOLN

The largest an engraving by William Marshall, 1866, penciled in border, "Artist Proof Wm. Marshall," water stained; one by Harwell-Evans, Co. with facsimile signature and dated 1864, and a copy of campaign lithograph of 1858; frames: 29 3/4 x 25 3/4 in., 17 1/2 x 13 1/2 in. and 16 1/4 x 13 3/4 in.

Estimate: \$ 100.00 - \$ 200.00



Lot #224: LINCOLN, ABRAHAM. CAMPAIGN FLAG, 1864, LINCOLN/JOHNSON.

1864. Size: 22 x 33". Campaign flag in the form of an American Flag with 34 stars. "Lincoln and Johnson" are in block letters in white stripes. Note included stating that Philip Schaum printed this flag at his dye shop in Lancaster (state not shown).

Estimate: \$ 1500.00 - \$ 2000.00



Lot #225: GILT-METAL WALL RONDEL: "LINCOLN TUNNEL DEDICATED 1937..."

Together with a gilt-metal medallion with tunnel view on the front and a profile of Lincoln on the reverse, "For a Further Unification of the People," by Kilea; 12 and 1 1/2 in.

Estimate: \$ 75.00 - \$ 125.00



Lot #226: TWO RELIEF METAL PROFILE HEADS OF GEORGE WASHINGTON

The one on integral oval back, the other cut-out; 12 x 10 3/8 in. and 11 1/2 x 8 1/4 in.

Estimate: \$ 200.00 - \$ 300.00



Lot #227: AMERICAN HOLLOW-CAST COPPER LARGE EAGLE WEATHERVANE

Modeled with raised wings, head turned to right and talons clutching on orb, fitted black-painted cast iron quadruple stand, by J.R. Palmer, New York; approx. 43 x 7 ft. 9 in.
Estimate: \$ 3000.00 - \$ 6000.00



Lot #228: S. CHESTER DANFORTH: "BYRD'S SOUTH POLE FLAGSHIP"

Etching on paper, 11 5/8 x 7 1/2 in. (sight), titled, numbered 55/225 and signed below the image.
Estimate: \$ 100.00 - \$ 200.00



Lot #229: QUEEN ANNE CHERRY DRESSING TABLE

The rectangular top with thumb-molded edge, the case fitted with 1 long and 3 short drawers, the whole raised on cabriole legs ending in pad feet; 29 3/4 x 33 1/2 x 21 3/4 in.
Estimate: \$ 5000.00 - \$ 10,000.00



Lot #230: QUEEN ANNE-STYLE WALNUT OVAL SEATED STOOL

The drop-in seat on plain rails, raised on cabriole legs, two carved with shells and bell flowers, ending in trifold feet; 18 1/2 x 23 in.
Estimate: \$ 800.00 - \$ 1200.00

Lots 231 - 240



Lot #231: QUEEN ANNE PINE TOP CHERRY TAVERN TABLE

The oval overhang top above box frieze, raised on tapered legs, ending in top-shape feet; 26 x 32 1/4 x 25 in.

Estimate: \$ 1000.00 - \$ 1500.00



Lot #232: QUEEN ANNE MAHOGANY TILT-TOP TRIPOD TEA TABLE

The plain 3-plank top on column stem and cabriole legs ending in pointed pad feet; 26 1/4 in., 33 in. diam.

Estimate: \$ 500.00 - \$ 1000.00



Lot #233: AMERICAN QUEEN ANNE FIGURED MAPLE DRESSING TABLE

The molded top above a scalloped case with one long and 3 short drawers with brass bat's wing drop handles on cabriole legs, ending in pad feet; bird's eye back panel; 29 1/2 x 31 3/4 x 18 1/2 in.

Estimate: \$ 800.00 - \$ 1200.00



Lot #234: QUEEN ANNE MAHOGANY CHEST ON CHEST, BOSTON

The bonnet top with swan neck cresting supporting three finials below a shell carved drawer, and 6 graduated drawers flanked by flute pilaster, the lower section with conforming case, fitted with 4 graduated drawers, raised on 4 bracket feet; 89 x 43 x 22 in.

Estimate: \$ 5000.00 - \$ 10,000.00



Lot #235: QUEEN ANNE WALNUT OPEN ARMCHAIR

The shaped padded back and seat flanked by shepherd's crook arms, raised on cabriole legs ending in pointed pad feet; 34 1/2 x 24 1/2 in.

Estimate: \$ 1000.00 - \$ 1500.00



Lot #236: AMERICAN QUEEN ANNE INLAID WALNUT DRESSING TABLE

The line-inlaid top with stellate medallion and 4 notched corners, the front containing one long and 3 short drawers centering a concave 1/2-shell, on hipped cabriole legs ending in pad feet; 31 x 34 x 21 1/2 in. Provenance: Property from the Collection of Josephine and Walter Buhl Ford II.
Estimate: \$ 4000.00 - \$ 8000.00



Lot #237: AMERICAN QUEEN ANNE WALNUT DRESSING TABLE

The 2-plank top with 4 notched corners, the scalloped kneehole with 3 drawers, on cabriole legs ending in pad feet; 29 1/4 x 33 x 20 3/4 in. Provenance: The Estate of Fred F. and Lois K. Rogers
Estimate: \$ 2500.00 - \$ 3500.00



Lot #238: AMERICAN CHERRY TWO-PIECE CORNER CABINET

The carved cornice above a 12-pane glazed door and the base enclosed by a door, on bracket feet; 7 ft. 2 3/4 in. x 44 1/2 x 21 in.
Estimate: \$ 1000.00 - \$ 1500.00



Lot #239: PENNSYLVANIA WALNUT CORNER CUPBOARD

The coved cornice above dentil frieze and a pair of 8-pane glazed doors, the lower section enclosed by a pair of paneled doors, on ogee bracket feet; 7 ft. 3 3/8 in. x 4 ft. 5 1/2 in. x 17 1/2 in.
Estimate: \$ 2000.00 - \$ 3000.00



Lot #240: AMERICAN MAPLE, PINE AND ASH TAVERN CHAIR

The horseshoe-shape top rail above 17 spindles and turned supports, the shaped seat on turned legs joined by h-stretcher; 27 1/2 x 28 in.
Estimate: \$ 250.00 - \$ 500.00

Lots 241 - 250



Lot #241: MASSACHUSETTS BIRCH INLAID MAHOGANY GAMES TABLE

The serpentine-fronted folding top with swag-inlaid edge, above a central oval and flame panels, raised on reeded, tapered legs; 30 3/4 x 36 1/2 x 17 3/4 in.

Estimate: \$ 2000.00 - \$ 4000.00



Lot #242: AMERICAN CHERRY TWO-PART CORNER CABINET

The molded cornice above a 12-pane glazed door, the lower part enclosed by a pair of paneled doors, on chamfered bracket feet; 7 ft. 1 1/2 x 43 x 22 in.

Estimate: \$ 1500.00 - \$ 2500.00



Lot #243: CHIPPENDALE FIGURED MAPLE TALL CHEST OF DRAWERS

The back bearing a paper label of James Davidson Antiques; the applied molded top above 5 molded drawers with later brass bat's wing drop handles, on bracket feet; 46 1/4 x 37 x 18 3/4 in.

Estimate: \$ 800.00 - \$ 1200.00



Lot #244: CHIPPENDALE CHERRY SLANT-FRONT DESK

The flap opening to stepped interior with pigeonholes and drawers, above 4 molded drawers with later brass bat's wing drop handles, on bracket feet; 40 3/8 x 36 3/4 x 16 1/2 in.

Estimate: \$ 500.00 - \$ 700.00



Lot #245: AMERICAN CHIPPENDALE CHERRY SLANT-FRONT DESK

The flap opening to scalloped top pigeonholes, drawers and door, above 4 molded drawers with brass bat's wing handles, on bracket feet; 40 1/4 x 41 x 19 1/2 in.

Estimate: \$ 800.00 - \$ 1200.00



Lot #246: PENNSYLVANIA CHIPPENDALE FIGURED WALNUT LINEN PRESS, LANCASTER OR MONTGOMERY COUNTY

The removable swan's neck dentilated cornice with rosettes and urn finial, above a pair of breakarch fielded panel doors, the 4-drawer chest with pierced brass handles, on ogee bracket feet; 7 ft. 1 in. x 44 in. x 18 1/2 in. Provenance: From Oldwalls, the home of sculptor Chester Beach.

Estimate: \$ 3000.00 - \$ 5000.00



Lot #247: AMERICAN CHIPPENDALE CARVED MAHOGANY SLANT-FRONT DESK

The flap opening to shell-crested drawers, pigeonholes and central door, above 4 molded drawers with later brass bat's wing handles, on ogee bracket feet; 41 1/4 x 43 x 23 in.

Estimate: \$ 800.00 - \$ 1200.00



Lot #248: CHIPPENDALE BIRCH CHEST OF DRAWERS, MASSACHUSETTS

The serpentine top above a case fitted with 4 drawers with later brass handles, raised on ogee feet; 35 x 40 x 36 1/2 in.

Estimate: \$ 2000.00 - \$ 4000.00



Lot #249: AMERICAN CHIPPENDALE-STYLE FIGURED MAPLE MIRROR

The molded frame with shaped crest and apron; 4 ft. 7 in. x 24 in.

Estimate: \$ 800.00 - \$ 1000.00



Lot #250: AMERICAN CHIPPENDALE CARVED WALNUT SIDE CHAIR

The serpentine top rail above pierced baluster splat and the drop-in seat on plain rails and cabriole legs ending in ball and claw feet; 37 1/4 x 21 in. Provenance: From Oldwalls, the home of sculptor Chester Beach.

Estimate: \$ 800.00 - \$ 1200.00

Lots 251 - 260



Lot #251: AMERICAN CHIPPENDALE-STYLE CARVED WALNUT CHILD'S SIDE CHAIR

The shell-carved serpentine crest above solid baluster splat and the drop-in seat on shell-carved cabriole legs, ending in claw and ball feet; 29 7/8 x 16 1/2 in. Provenance: Property from the Cooper-Hewitt National Design Museum, to be sold for the benefit of the Aquisitions fund.

Estimate: \$ 400.00 - \$ 800.00



Lot #252: CHIPPENDALE MAHOGANY CENTER TABLE, NEW YORK

The rectangular top with thumb-molded edge over a frieze applied gadrooned molding, raised on acanthus carved cabriole legs, ending in claw and ball feet; 28 x 45 x 21 in.

Estimate: \$ 4000.00 - \$ 8000.00



Lot #252A: CHIPPENDALE CARVED AND FIGURED MAHOGANY DROP-LEAF TABLE, BOSTON OR SALEM, MASSACHUSETTS

With 2 rectangular leaves, raised on angular cabriole legs ending in claw and ball feet; 26 x 13 1/2 x 34 1/2 in. Provenance: Property from the Collection of Josephine and Walter Buhl Ford II.

Estimate: \$ 1200.00 - \$ 1800.00



Lot #253: AMERICAN OLIVE GROUND PAINTED CHILD'S SIDE CHAIR

The straight top rail with 4 flowerheads and 2 buds, above 3 spindles, shaped seat, turned legs and box stretchers; 15 x 10 1/2 in.

Estimate: \$ 400.00 - \$ 800.00



Lot #254: FEDERAL MAHOGANY PEDESTAL PEMBROKE TABLE

28 1/2 x 21 x 37 1/2 in. (with leaves down).

Estimate: \$ 800.00 - \$ 1200.00



Lot #255: FEDERAL FIGURED MAPLE TRIPOD WORK TABLE

The top with chamfered corners above a frieze drawer with brass pull, the turned pedestal on tripod snake feet; 28 x 15 1/4 x 14 in.

Estimate: \$ 300.00 - \$ 500.00



Lot #256: FEDERAL MAHOGANY THREE-PART DINING TABLE, PHILADELPHIA

28 1/2 x 47 x 105 in.

Estimate: \$ 2500.00 - \$ 5000.00



Lot #257: FEDERAL LINE-INLAID MAHOGANY PEMBROKE TABLE

With reeded edge, the leaves with rounded corners, the frieze containing a drawer at one front and false drawer at reverse, on tapered legs; 28 x 17 1/2 x 35 3/4 in.

Estimate: \$ 500.00 - \$ 700.00



Lot #258: FEDERAL LINE-INLAID MAHOGANY PEMBROKE TABLE

With bowed breakfront leaves, the frieze containing a drawer at one end and a false drawer at reverse, on square tapered legs; 28 x 21 3/4 x 30 in. Provenance: From Oldwalls, the home of sculptor Chester Beach.

Estimate: \$ 800.00 - \$ 1200.00



Lot #259: NEW YORK FEDERAL BRASS-MOUNTED CARVED AND FLAME MAHOGANY VENEERED ARMOIRE

The cornice above an arched frieze inlaid with brass stringing, the pair of double paneled doors with brass escutcheons and moldings, flanked by 3/4-round Ionic columns, resting on claw feet; 6 ft. 11 in. x 4 ft. 9 in. x 22 1/4 in.

Estimate: \$ 1500.00 - \$ 2500.00



Lot #260: THREE FEDERAL CARVED MAHOGANY SIDE CHAIRS, ATTRIBUTED TO DUNCAN PHYFE

Each curved top rail above horizontal splat and the drop-in seat on shallow rails and paneled splayed legs with hairy lower sections and paw feet; 33 x 18 1/2 in. Provenance: Property from the Estate of Janet Welldon Graham, Julia Hoyt Welldon Graham, Julia Hoyt Welldon and the Hoyt family of New York City and Staatsburgh, New York.

Estimate: \$ 2000.00 - \$ 3000.00

Lots 261 - 270



Lot #261: FEDERAL INLAID MAHOGANY SERPENTINE FRONT GAMES TABLE

28 x 36 x 17 in.

Estimate: \$ 1500.00 - \$ 2200.00



Lot #262: FEDERAL CARVED MAHOGANY DRESSING TABLE

The top with 2 hinged flaps above a drawer at the front and 2 narrow drawers at one side, on reeded, tapered legs; 29 1/4 x 24 x 20 in.

Estimate: \$ 700.00 - \$ 1000.00



Lot #263: LATE FEDERAL FIGURED MAPLE DRESSING TABLE AND A DRESSING MIRROR

The rectangular top above a scalloped 3-drawer frieze fitted with later brass tear-drop pulls, raised on turned tapered legs ending on ball feet, the swing mirror plate with shaped crest and trestle supports; 28 x 30 x 14 in. and 25 1/4 x 15 x 8 in.

Estimate: \$ 400.00 - \$ 800.00



Lot #264: LATE FEDERAL MAHOGANY SPECIMEN CABINET

With swan's neck crest, the pair of flame-veneered doors opening to 8 shallow drawers, on bracket feet; 19 1/2 x 17 x 10 in.

Estimate: \$ 200.00 - \$ 400.00



Lot #265: LATE FEDERAL FIGURED MAPLE TRIPOD CANDLESTAND

The quatrefoil tilt top on vase and urn pedestal and shaped down-swept legs ending in turned feet; 27 1/2 x 23 x 20 1/4 in.

Estimate: \$ 400.00 - \$ 600.00



Lot #266: AMERICAN PAINTED AND STAINED WOOD SPICE CABINET

The red-stained case containing 20 light blue drawers with turned pulls; 30 1/2 x 31 1/4 x 9 1/4 in.

Estimate: \$ 300.00 - \$ 400.00



**Lot #267: AMERICAN COMB-BACK WINDSOR
ARMCHAIR**

The top rail with coiled ends, above 9 spindles crossed by arm section with shaped terminals, the serpentine-fronted seat on turned legs joined by h-stretcher; 43 1/4 x 28 in.

Estimate: \$ 400.00 - \$ 600.00



**Lot #268: AMERICAN BLACK-PAINTED LADDER-BACK
ARMCHAIR**

The curved top rail and 2 splats on ring-turned uprights, the down-sloping arms with rounded disc terminals, the woven splint seat on turned legs joined by stretchers; 41 1/2 x 27 in.

Estimate: \$ 800.00 - \$ 1200.00



**Lot #269: AMERICAN BLACK-PAINTED CAST-IRON
GARDEN BENCH**

The curved back with 9 pierced and lobed panels cast with berried laurel leaves, the concave-fronted seat with scrolled rays, on winged lion front legs; 29 3/8 x 43 1/2 in.

Estimate: \$ 1000.00 - \$ 2000.00



**Lot #270: AMERICAN WHITE-PAINTED CAST-IRON
GARDEN BENCH**

The back pierced with 3 urn and scroll panels beneath rosette and spindle crest, the seat with quatrefoils above spade-banded rails and trestle supports, marked "Pat. App. d. For.," 33 x 46 1/2 in.

Estimate: \$ 250.00 - \$ 500.00

Lots 271 - 280



Lot #271: THOMAS COTTON HAYWARD: BRANDED BLACK STAINED SACK-BACK WINDSOR ARMCHAIR
Branded T.C. Hayward; the arched 7-spindle backrest crossed by arm section with shaped terminals, the seat on turned legs joined by h-stretcher; 38 1/4 x 28 1/4 in.
Estimate: \$ 400.00 - \$ 600.00



Lot #272: WALTER MACBRIDE: TWO BRANDED CONTINUOUS BOW-BACK WINDSOR ARMCHAIRS
Each branded W. Macbride, N. York; the one painted black over green, the other stained wood, each top rail continuing down to form the armrests with shaped terminals, the brace support, the seat on turned legs joined by h-stretcher, one with exhibition label.
Exhibition: " A Tribute to Excellence," January 12-February 25, 1989, item 22-c, David A. Schorsch Inc., NY.
Estimate: \$ 2000.00 - \$ 4000.00



Lot #273: LATE FEDERAL MINIATURE CHEST OF DRAWERS
Containing 2 frieze drawers above 3 recessed drawers flanked by applied spindles, on turned feet; 20 1/4 x 18 1/2 x 11 in.
Estimate: \$ 500.00 - \$ 700.00



Lot #274: RENAISSANCE-STYLE CARVED WALNUT CHILD'S CORNER CHAIR AND AN ARMCHAIR
The curved top rail centered by a cherub head, above bird splats and column supports, the drop-in seat on dotted rails and turned legs; 19 x 18 in. and 24 1/2 x 14 1/2 in.
Estimate: \$ 200.00 - \$ 400.00



Lot #275: ITALIAN SCHOOL: SCENE FROM ROMAN HISTORY
Pen and ink on paper, 7 1/4 in. diam., signed indistinctly and annotated '50 lower center.
Estimate: \$ 1000.00 - \$ 2000.00



Lot #276: NORTHERN EUROPEAN SCHOOL: THE ASCENSION

Ink and wash on paper, 7 1/2 x 5 1/8 in., annotated on backing: "J. Peolo" and "ESE collection."

Estimate: \$ 300.00 - \$ 500.00



Lot #277: GERMAN SCHOOL: VENUS & AENEAS

Ink and wash on paper, 10 3/16 x 8 1/4 in. (sight), and with collector's stamp in lower left corner.

Estimate: \$ 800.00 - \$ 1200.00



Lot #278: ITALIAN SCHOOL: MOTHER AND CHILD

Oil sketch on paper laid down on paper, 6 15/16 x 8 3/8 in. (sheet).

Estimate: \$ 600.00 - \$ 800.00



Lot #279: ATTRIBUTED TO GIUSEPPE BISON: ST. JOHN IN THE WOODS

Ink and wash on paper, 7 5/8 x 12 15/16 in. (image, sight).

Estimate: \$ 300.00 - \$ 400.00



Lot #280: ATTRIBUTED TO THEODOR DE BRY: ORGUEILLE ET FOLLIE

Engraving on paper, 4 3/4 in. diam. (sight), from a set of designs for medallions.

Estimate: \$ 200.00 - \$ 400.00

Lots 281 - 290



**Lot #281: ATTRIBUTED TO HEINRICH ALDEGRAVER:
DILIGENCE (GAUDIA) FROM THE VIRTUES**

Copper engraving on paper, 4 x 2 7/16 in. (sight), initialed and dated in the plate.

Estimate: \$ 150.00 - \$ 250.00



**Lot #282: ATTRIBUTED TO JACQUES CALLOT: TWO
SEATED FIGURES**

Etching on paper, 2 1/4 x 3 3/8 in. (sight), together with an etching attributed to Giovanni Benedetto Castiglione; 9 x 7 3/16 in.

Estimate: \$ 500.00 - \$ 800.00



**Lot #283: CONTINENTAL SCHOOL: THREE FIGURAL
STUDIES**

Pen and ink drawings; 10 3/4 x 7 3/4 in., 6 1/4 x 8 1/2 in. and 8 x 11 in.

Estimate: \$ 300.00 - \$ 600.00



Lot #284: AFTER RAFAEL: HEAD OF A YOUTH

Watercolor, contained in carved giltwood frame; frame: 3 3/4 x 3 in.

Estimate: \$ 100.00 - \$ 200.00



Lot #285: CONTINENTAL SCHOOL: FIGURAL STUDY

Pen and brown ink and wash drawing on blue toned paper, 17 1/8 x 11 3/8 in., unsigned.

Estimate: \$ 1500.00 - \$ 3000.00



Lot #286: CONTINENTAL SCHOOL: DANCING MAIDEN

Sanguine drawing, 12 1/2 x 8 1/2 in., unsigned.

Estimate: \$ 400.00 - \$ 800.00



Lot #287: ITALIAN SCHOOL: THREE-QUARTER PROFILE

Sepia chalk with highlighting on paper, 6 3/16 x 4 9/16 in.
Estimate: \$ 700.00 - \$ 900.00



Lot #288: CONTINENTAL SCHOOL: STUDY OF A PUTTO

Chalk drawing on blue toned paper, 16 1/2 x 11 in., unsigned.
Estimate: \$ 800.00 - \$ 1200.00



Lot #289: CONTINENTAL SCHOOL: PROFILE PORTRAIT OF A YOUNG WOMAN

Chalk on paper, 12 1/2 x 10 1/2 in., unsigned.
Estimate: \$ 1000.00 - \$ 2000.00



Lot #290: CHEZ BLIN (PUBLISHER): PORTRAITS OF FRENCH RULERS AND NOBLES

Ten engravings including Charlemagne by Ride, after Sergent and others, some hand-colored, matted with silvered wood frames;
frame: 16 1/2 x 13 1/2 in.
Estimate: \$ 1000.00 - \$ 1500.00

Lots 291 - 300



Lot #291: CONTINENTAL SCHOOL: RELIGIOUS AND ALLEGORICAL SCENES

A group of charcoal and pen and ink drawings, some with studio stamp of Tomaso Minardi.

Estimate: \$ 100.00 - \$ 200.00



Lot #292: CONTINENTAL SCHOOL: GROUP OF DRAWINGS

Mixed media, one with studio stamp of Tomaso Minardi.

Estimate: \$ 100.00 - \$ 200.00



Lot #293: CONTINENTAL SCHOOL: FIGURES AND PORTRAITS

A group of charcoal drawings in the 19th c. academic tradition.

Estimate: \$ 100.00 - \$ 200.00



Lot #294: FRENCH SCHOOL: LA LAMPE POLANAISE & LA POETE

A pair of sepia colored prints, 5 1/8 x 7 in., dated 1977, signed in plate.

Estimate: \$ 200.00 - \$ 400.00



Lot #295: SET OF SIX FRENCH EQUESTRIAN PORTRAITS OF HUSSAR OFFICERS

Hand-colored engravings, after Hoffman, each with identical image of a Hussar variously attired, pen and ink titles, in French, matted and framed; 17 1/2 x 10 3/4 in. (frame).

Estimate: \$ 400.00 - \$ 800.00



Lot #296: S. & J. FULLER (PUBLISHER, 1817): SIX COACHING PRINTS

Hand-colored engravings, gilt banded black églomisé mats and Hogarth frames; 12 3/4 x 15 1/2 in.

Estimate: \$ 600.00 - \$ 1000.00



**Lot #297: SET OF EIGHT FASHION PRINTS FROM
ACKERMAN'S REPOSITORY OF ARTS**

Hand-colored engravings, each titled, matted and framed; 12 3/8 x 8 3/4 in.

Estimate: \$ 300.00 - \$ 500.00



**Lot #298: ATTRIBUTED TO ANTON RAPHAEL MENGS:
PORTRAIT**

Pastel on paper mounted on a stretcher, 17 1/2 x 13 3/4 in.,
unsigned.

Estimate: \$ 1000.00 - \$ 2000.00



**Lot #298A: ATTRIBUTED TO ANTON RAPHAEL MENGS:
PORTRAIT**

Pastel on paper; 17 1/2 x 13 3/4 in.

Estimate: \$ 1000.00 - \$ 2000.00



**Lot #299: ATTRIBUTED TO PIERRE CHASELAT: A
STUDENT OF AMBOISE PARE**

Chalk with highlighting, 22 1/2 x 17 3/8 in. (image, sight) and with
dedication below image.

Estimate: \$ 200.00 - \$ 300.00



**Lot #300: SIR DAVID WILKIE, R.A. (1785-1841): FIGURAL
GROUP AT TABLE**

Ink and wash on paper, 4 x 5 1/4 in. (sight), initialed and dated
January 17, 1837 lower left. Provenance: Burlington Art Gallery, 5
Field St., Durban, order #2965.

Estimate: \$ 600.00 - \$ 800.00