

Lots 701 - 710



Lot #701: RENAISSANCE-STYLE RELIEF-CARVED OAK BOOKREST AND BURR WALNUT REST

The one with 2 cherubs amidst vinework supporting an oval cypher, double arched base, the other with 3/4 gallery and brass hinged pins; 11 x 11 3/4 x 21 1/2 in. and 7 1/2 x 15 3/4 x 12 3/4 in.

Estimate: \$ 200.00 - \$ 300.00



Lot #702: CONTINENTAL BAROQUE WALNUT SIDE TABLE

The molded top above a frieze drawer with wood pull, on spiral-twist and block legs joined by shaped x-stretcher, on 1/2 bun feet; 29 x 37 x 26 in.

Estimate: \$ 1500.00 - \$ 2500.00



Lot #703: CONTINENTAL BAROQUE CARVED GILTWOOD MIRROR

The arched plate flanked by cornucopia, c-scrolls and flowers, supporting a tiered leaf and flowerhead crest, flower and c-scroll base; 37 x 28 in.

Estimate: \$ 1200.00 - \$ 1800.00

Lot #704: NO LOT



Lot #705: BAROQUE-STYLE SCAGLIOLA-TOP GILT-METAL LOW TABLE

The "verde antico" top with central blue oval medallion, colorful floral stems and scrolls, raised on ring and double scroll legs joined by a stretcher; 18 x 5 ft. 24 in.

Estimate: \$ 800.00 - \$ 1200.00



Lot #706: BAROQUE-STYLE FIGURED WALNUT FOUR-POSTER TESTER BEDSTEAD

The breakarch crewelwork-hung canopy raised on spiral-twist and block legs, with scalloped and padded headboard and padded footboard, on ring-turned and half-bun feet; 9 ft. 5 in. x 4 ft. 7 1/4 in. x 7 ft. 2 in. Provenance: Property from the Childs family collection, removed from "Florham," Madison, New Jersey, the 100-room mansion designed by McKim, Mead & White for Florence Vanderbilt Twombly and her husband, Hamilton Twombly. The building is now part of Fairleigh Dickinson University.

Estimate: \$ 1000.00 - \$ 3000.00



Lot #707: CONTINENTAL BAROQUE INLAID WALNUT TABLE CABINET

The line inlaid doors with pointed panels and brass foliate cast escutcheons, opening to 3 fixed shelves, cross-banded sides, bun feet; 12 3/8 x 10 1/2 x 5 1/2 in.
Estimate: \$ 250.00 - \$ 450.00



Lot #708: ITALIAN BAROQUE-STYLE CAST-IRON MOUNTED WALNUT TWO-PART CABINET

The shaped cornice above a guilloche frieze and a pair of doors with pieced scroll panels, flanked by caryatids and paneled sides, the base containing a drawer above a pair of doors, on a plinth; 5 ft. 4 3/4 in. x 36 3/4 x 16 1/2 in.
Estimate: \$ 1200.00 - \$ 1800.00



Lot #709: ITALIAN BAROQUE CARVED WALNUT CASSONE

The hinged top above a front panel carved with leaf-tip rondel and ovals, spaced by tulip stems and fluted ovals, fluted borders, short feet; 22 3/4 x 5 ft. 9 in. x 23 in.
Estimate: \$ 2000.00 - \$ 4000.00



Lot #710: DUTCH ROCOCO-STYLE MARQUETRY-INLAID DISPLAY CABINET

The serpentine molded cornice above a pair of 9-pane glass doors and canted side windows, the bombe 3-drawer base raised on lion's paw feet, inlaid with shells, foliate vines and flower-filled ewers; 7 ft. 6 1/4 in. x 5 ft. 11 1/2 in. x 16 in.
Estimate: \$ 1500.00 - \$ 2500.00

Lots 711 - 720



Lot #711: ITALIAN ROCOCO PAINTED PARCEL-GILT CONSOLE TABLE

The faux-painted marble top with pierced carved frieze; 15 x 40 1/2 x 15 1/2 in.

Estimate: \$ 700.00 - \$ 900.00



Lot #712: ITALIAN TRANSITIONAL-STYLE CARVED, BLUE-STAINED AND PARCEL-GILT COMMODO

The molded top with chamfered corners and a marbled panel, above 2 drawers with foliate-cast gilt-metal keyhole escutcheons and pulls, flanked by pendant fruit and foliage, scalloped apron and cabriole legs ending in shell-applied hoof feet; 35 3/4 x 45 1/2 x 20 1/2 in. Provenance: Property from a Long Island Estate.

Estimate: \$ 1000.00 - \$ 1500.00

Lot #713: REGENCE-STYLE GILT REPOUSSÉ METAL MIRROR

The frame with cherubs amidst floral vines and ribbon-bound outer edge, the crest with a mythological rondel of Apollo kneeling at the foot of a goddess; 28 x 17 in.

Estimate: \$ 500.00 - \$ 700.00



Lot #714: LOUIS XIV GILT-BRONZE MOUNTED AND BOULLEWORK BRACKET CLOCK

Signed at the front and on the back plate, Andre Hory A Paris; the urn and strapwork dial with enamel Roman numerals, the door with mount of 2 classical maidens, a cock and a lion, the dome case with brass inlaid tortoiseshell and the removable crest fitted with a trumpeting angel, bracket feet; 38 x 16 x 7 in.

Estimate: \$ 4000.00 - \$ 6000.00



Lot #715: LOUIS XV-STYLE RED LACQUER BOMBÉ COMMODO

The serpentine-fronted sarrincolin marble top above 2 drawers sans traverse with gilt-metal pulls, incised with gilt chinoiserie landscape views, flanked by foliate spines continuing into the sabots; 33 3/4 in. x 4 ft. 1 in. x 20 1/4 in. Provenance: Property from a Long Island Estate.

Estimate: \$ 1500.00 - \$ 2500.00



Lot #716: REGENCE GILT-BRONZE MOUNTED KINGWOOD COMMODO

The cross-banded 1/4-veneered top with scroll banding and molded edge, above 3 drawers with shell-cast keyhole escutcheons and acorn and oak leaf drop handles, on bracket feet; 32 3/4 x 4 ft. x 26 1/2 in.

Estimate: \$ 5000.00 - \$ 7000.00



Lot #717: PAIR OF LOUIS XV-STYLE GILT-METAL MOUNTED AND MARQUETRY INLAID KIDNEY-SHAPE SIDE TABLES

Each cross-banded 1/4-veneered top with bow-knot floral spray, above a drawer, on foliate-cast legs ending in scroll sabots; 28 1/2 x 25 1/4 x 15 in.

Estimate: \$ 700.00 - \$ 900.00



Lot #718: LOUIS XV-STYLE CARVED BEECHWOOD BERGERE EN CABRIOLET

With flower-carved crest, padded arms, serpentine seat and cabriole legs; 25 1/2 x 17 1/2 in.

Estimate: \$ 250.00 - \$ 500.00



Lot #719: LOUIS XV CARVED BEECHWOOD CHAISE LOUNGE

The tub back with flower crest and padded arms, the seat on floral and molded rails, raised on cabriole legs ending in scroll toes; 37 1/2 in. x 5 ft. 9 in.

Estimate: \$ 1500.00 - \$ 3000.00



Lot #720: LOUIS XV PROVINCIAL WALNUT COMMODOE

The scalloped top above 3 drawers with brass drop handles, the rounded corners continuing down to form the feet; 32 1/2 in. x 4 ft. 3 3/4 in. x 21 1/2 in.

Estimate: \$ 2000.00 - \$ 3000.00

Lots 721 - 730



Lot #721: LOUIS XV GILT-METAL MOUNTED KINGWOOD-INLAID BUREAU EN PENTE

The 1/4-veneered flap above a kneehole with 2 drawers and 2 doors, one opening to a safe drawer, raised on cabriole legs with foliate-cast knee mounts and sabots, the sides and reverse also 1/4-veneered; 40 3/4 in.

Estimate: \$ 8000.00 - \$ 12,000.00



Lot #722: LOUIS XV-STYLE CARVED WALNUT FAUTEUIL DE CABINET

The serpentine rails with scroll terminals on voluted supports, the serpentine-fronted seat on floral rails and cabriole legs ending in scroll toes; 35 x 24 1/2 in.

Estimate: \$ 2000.00 - \$ 3000.00



Lot #723: LOUIS XV-STYLE GILT-BRONZE MOUNTED BUREAU PLAT

The top with gold-tooled leather panel and molded edge, above 5 drawers at the front and false fronts at reverse, on cabriole legs with shell and foliate cast knees, molded spines and paw sabots; 30 3/4 x 5 ft. 9 1/2 in. x 35 in.

Estimate: \$ 4000.00 - \$ 8000.00



Lot #724: LOUIS XV-STYLE CARVED WALNUT THREE-PIECE SUITE WITH VERDURE TAPESTRY UPHOLSTERY

Comprising a pair of fauteuils en cabriolet and a settee with flower-carved crest and rails and padded arms, raised on cabriole legs; settee: 34 x 43 in. Provenance: From the Collection of the

Wanamaker-de Heeren Family.

Estimate: \$ 800.00 - \$ 1200.00



Lot #725: PAIR OF LOUIS XV PAINTED CHAISES A LA REINE

Each padded back with serpentine top rail and the serpentine-fronted seat on shell and foliate rail and angular cabriole legs; 37 1/2 x 26 in.

Estimate: \$ 600.00 - \$ 800.00



Lot #726: LOUIS XVI-STYLE GILT-METAL MOUNTED MARQUETRY BUREAU PLAT

The top with tooled black leather panel and reeded edge, the 3-drawer frieze with floral, fluted and beaded mounts, on brass-inlaid fluted legs with beaded collars; 31 3/4 x 4 ft. 7 1/2 in. x 28 1/4 in.

Provenance: Property from the Cooper-Hewitt National Design Museum, to be sold for the benefit of the Aquisitions fund.

Estimate: \$ 2000.00 - \$ 4000.00



**Lot #727: PAIR OF LOUIS XVI-STYLE CARVED
GILTWOOD PIER MIRRORS**

Each "antiqued" 2-part plate within bead-and-reel and ribbon twist frame surmounted by floral swags and a love trophy crest centering a serpent-entwined urn; 5 ft. 4 in. x 20 in.

Estimate: \$ 800.00 - \$ 1200.00



**Lot #728: PAIR OF LOUIS XVI-STYLE CARVED
GILTWOOD MIRRORS**

Each oval plate within beaded and ribbon twist frame with flower-carved crest and base; 28 x 17 1/2 in.

Estimate: \$ 400.00 - \$ 800.00



**Lot #729: PAIR OF LOUIS XVI-STYLE BRASS-MOUNTED
MAHOGANY SIDE TABLES**

Each rectangular brass-edged top above a 3-panel drawer with wreath cast ring drop handles, raised on octagonal tapered legs joined by a concave-fronted shelf ending in box sabots; 27 x 27 1/2 x 16 in.

Estimate: \$ 800.00 - \$ 1200.00



**Lot #730: PAIR OF LOUIS XVI-STYLE CARVED, PAINTED
AND PARCEL-GILT MIRRORS**

Each oval main mirror plate with bead and ribbon-twist surround and corner plates, overlaid with husk-hung paterae, the entrelac frame with corner rosettes; 24 x 20 x 1 1/4 in.

Estimate: \$ 2000.00 - \$ 3000.00

Lots 731 - 740



**Lot #731: LOUIS XVI BRASS-MOUNTED MAHOGANY
TABLE À ROGNON**

The pierced 3/4 gallery top with tooled leather panel above a 3-drawer frieze with bow-knot key escutcheons and encadrements, the stop-fluted legs joined by a shelf; 30 x 43 x 26 in.

Estimate: \$ 1800.00 - \$ 2200.00



**Lot #732: LOUIS XVI-STYLE CARVED, PAINTED AND
PARCEL-GILT FIRE SCREEN WITH AUBUSSON PANEL**

The petal-tip and rosette top and base rails on stop-fluted upright and foliate-carved legs; the cafe-au-lait ground panel worked with bow-tied floral bouquet, within ribbonwork and tan border; 40 1/2 x 25 x 14 in.

Estimate: \$ 800.00 - \$ 1200.00



**Lot #733: LOUIS XVI-STYLE GILT-METAL MOUNTED
MAHOGANY COMMODOE**

The veined gray marble top with outset corners, above 3 cross-banded drawers with bow-knotted husk escutcheons and handles, the fluted corners on bracket feet; 33 3/4 x 44 3/4 x 18 1/2 in.

Estimate: \$ 2500.00 - \$ 5000.00



**Lot #734: LOUIS XVI BRASS-MOUNTED MAHOGANY
DEMILUNE GAMES TABLE**

The folding top with applied brass edge, opening to a green baize-lined surface, the frieze with applied encadrements, raised on tapered fluted legs, ending in thimble sabots.

Estimate: \$ 1000.00 - \$ 2000.00



**Lot #735: LOUIS XVI BRASS-MOUNTED MAHOGANY
DEMILUNE GAMES TABLE**

The d-shape folding top with applied brass edge, opening to plain surface, the frieze with encadrements and raised on tapered fluted legs ending in cup sabots; 30 1/2 x 42 1/2 x 21 in.

Estimate: \$ 1000.00 - \$ 2000.00



**Lot #736: LOUIS XVI-STYLE GILT-METAL MOUNTED
GUERIDON**

The galleried marble top above interlaced floral vines and ribbon-twist edge, on fluted legs surmounted by winged cherubs, joined by a shelf.

Estimate: \$ 800.00 - \$ 1200.00



**Lot #737: PAIR OF LOUIS XVI WHITE-PAINTED
FAUTEUILS EN CABRIOLET**

Each padded back with breakarch crest above padded arms and bowed seat raised on tapered fluted legs surmounted by paterae; 36 x 24 in.
Estimate: \$ 2000.00 - \$ 3000.00



Lot #738: LOUIS XVI MAHOGANY BIBLIOTÈQUE

The rectangular top above a pair of 2-pane glazed doors flanked by outset fluted corners continuing into tapered legs; 5 ft. 10 in. x 4 ft. 3 in. x 15 1/8 in.
Estimate: \$ 2000.00 - \$ 4000.00



**Lot #739: PAIR OF LOUIS XVI-STYLE CARVED, PAINTED
AND SILVERED WOOD TABOURETS**

Each square padded seat on foliate rails and square, tapered and fluted legs ending in leaf-banded toes; 18 1/2 x 20 x 20 in.
Estimate: \$ 1000.00 - \$ 2000.00



**Lot #740: LOUIS XVI-STYLE CARVED GILTWOOD
MIRROR**

The bead and ribbon twist banded frame with crest carved with a wreath and armorial flanked by cornucopia and laurel branches; 40 x 19 1/2 in.
Estimate: \$ 800.00 - \$ 1200.00

Lots 741 - 750



Lot #741: PAIR OF CONTINENTAL NEOCLASSICAL MAHOGANY STOOLS

Each dipped seat flanked by turned armrests on s-scroll supports, on splayed legs; 28 3/8 x 26 3/4 in. Provenance: Property from the Collection of Josephine and Walter Buhl Ford II.

Estimate: \$ 2000.00 - \$ 4000.00



Lot #742: CONTINENTAL CHINOISERIE PALE GREEN-LACQUER BUREAU BOOKCASE

The trefoil cornice above a pair of arched fielded panel doors opening to a fitted interior, the flap opening to drawers, pigeon holes and slide-concealed well, the lower part with central recessed door and 6 serpentine-fronted drawers, on bun feet; 7 ft. 10 in. x 46 1/2 x 22 in.

Estimate: \$ 8000.00 - \$ 12,000.00



Lot #743: NEOCLASSICAL-STYLE PAINTED AND PARCEL-GILT MARBLE TOP CONSOLE TABLE

33 x 30 x 22 in.

Estimate: \$ 1000.00 - \$ 1500.00



Lot #744: NEOCLASSICAL-STYLE UPHOLSTERED AND GILTWOOD BANQUETTE

The buttoned inverted d-shape seat raised on molded legs with scroll toes; 18 1/2 x 4 ft. 7 in. x 27 in.

Estimate: \$ 400.00 - \$ 700.00



Lot #744A: DUTCH NEOCLASSICAL WALNUT AND MARQUETRY MARBLE TOP CORNER CABINET

Approx. 40 x 28 x 17 in.

Estimate: \$ 1000.00 - \$ 2000.00



Lot #745: NEOCLASSICAL-STYLE CARVED GILTWOOD OVERMANTLE MIRROR

The 2-part plate within beaded and petal-tip border, surmounted by a flower-filled basket; 5 ft. 11 in. x 36 in.

Estimate: \$ 1500.00 - \$ 3000.00



**Lot #746: PAIR OF DUTCH NEOCLASSICAL-STYLE
INLAID SATINWOOD AND LACQUER CORNER
CABINETS**

With later ebonized wooden tops, the outset chamfered corners with line inlay and rosewood cross banding, each door with gilt chinoiserie view of buildings, willow, rockwork and lake, on square, tapered legs, lacking tops; 37 x 26 x 15 1/2 in.
Estimate: \$ 700.00 - \$ 1000.00



**Lot #747: CONTINENTAL STAMPED AND PAINTED
LEATHER BLACK-GROUND TWO-PART SIX-FOLD
SCREEN**

The 4 central panels each with floating chinoiserie figure, bird, and floral reserves within a border with flower-filled urns and flower-filled baskets; 7 ft. x 22 in. (each panel).
Estimate: \$ 2000.00 - \$ 3000.00



**Lot #748: CONTINENTAL PARQUETRY-INLAID WALNUT
CHEST OF DRAWERS**

The 1/4-veneered crossbanded canted top with Greek fret band and satinwood center, above 3 drawers each with 3 panels flanked by dot-inlaid corners, the sides with satinwood bands and rosettes, on tapered legs; 33 1/4 in. x 4 ft. 2 1/2 in. x 24 in.
Estimate: \$ 3000.00 - \$ 6000.00



**Lot #749: DIRECTOIRE-STYLE MAHOGANY AND BRASS-
MOUNTED SIDE CABINET**

The case fitted with 3 drawers and 4 doors, raised on brass-mounted toupie feet; 42 in. x 6 ft. 5 1/4 in. x 19 in.
Estimate: \$ 2000.00 - \$ 3000.00



**Lot #750: EMPIRE-STYLE MARBLEIZED AND LACQUER
CENTER TABLE**

The top with urn, Greek black figure vessel and oil lamp within "lapis" border, the "porphyry" supports joined by a concave-sided bases; 25 1/4 in., 24 in. diam.
Estimate: \$ 700.00 - \$ 900.00

Lots 751 - 760



Lot #751: PAIR OF EMPIRE GILT-METAL MOUNTED MAHOGANY BEDSTEADS

The paneled ends with tubular top rail, raised at the front by free-standing columns with capitals and base; 41 x 41 in.

Estimate: \$ 1500.00 - \$ 3000.00



Lot #752: EMPIRE GILT-METAL MOUNTED MAHOGANY CHEVAL MIRROR

The pediment above tiered anthemion and s-scroll mount, the swing plate on supports with acanthus leaf corbels, above a fitted drawer, a paneled base and arched legs; 5 ft. 9 in. x 26 x 23 1/2 in.

Provenance: Property from the Childs family collection, removed from "Florham," Madison, New Jersey, the 100-room mansion designed by McKim, Mead & White for Florence Vanderbilt Twombly and her husband, Hamilton Twombly. The building is now part of Fairleigh Dickinson University.

Estimate: \$ 800.00 - \$ 1200.00



Lot #753: EMPIRE MAHOGANY SETTEE

The padded back above padded armrest, the bowed seat on turned legs; 36 3/4 x 43 x 20 in.

Estimate: \$ 1500.00 - \$ 3000.00



Lot #754: EMPIRE GILT-METAL MOUNTED MAHOGANY CONSOLE TABLE

The later marbled top with outset corners, the frieze drawer with cornucopia-cast escutcheons and ring handles, on columnar legs joined by a shelf, on paw feet; 33 x 4 ft. 4 1/4 in. x 20 3/4 in.

Estimate: \$ 1200.00 - \$ 1800.00



Lot #755: EMPIRE MAHOGANY BIBLIOTÈQUE

The top with 3/4-applied molding, above 4 mirror-backed shelves with ebonized side edges, on column supports resting on a plinth; 4 ft. 8 1/2 in. x 30 1/4 in. x 18 1/2 in.

Estimate: \$ 1000.00 - \$ 1500.00



Lot #756: EMPIRE BRASS-INLAID CARVED MAHOGANY FAUTEUIL A LA REINE

The pitched diagonal gadroon crest above inlaid branches and padded panel, the s-scroll arms with brass line-inlaid reeding, the bowed seat above florette-inlaid rail and sabre legs; 37 1/2 x 22 x 20 1/2 in.

Estimate: \$ 1500.00 - \$ 3000.00



Lot #757: BIEDERMEIER-STYLE WALNUT, EBONIZED AND PARCEL-GILT FOUR-POSTER KING SIZED BEADSTEAD

With padded headboard, both boards with c-scroll ends, the columnar posts with urn finials fitted with tiered foliage; 7 ft. x 5 ft. 10 1/2 in.

Estimate: \$ 3000.00 - \$ 6000.00



Lot #758: SET OF SEVEN BIEDERMEIER-STYLE BLACK LACQUER SIDE CHAIRS

Each with curved back, stripe-upholstered seat and sabre legs; 34 3/4 x 19 in.

Estimate: \$ 700.00 - \$ 900.00



Lot #759: NORTH AFRICAN IVORY AND MOTHER-OF-PEARL-INLAID TALL CHEST OF DRAWERS

With veined white marble top, the 5-drawers with ceramic ball pulls, on bracket feet; 4 ft. 6 3/4 x 44 1/2 x 20 1/2 in.

Estimate: \$ 1500.00 - \$ 3000.00



Lot #760: EMPIRE GILT-METAL MOUNTED MAHOGANY JARDINIÈRE

Of block form with diamond lattice gallery, above canted bowl applied with 4 rosettes and foliate-cast drop handles, on s-scroll legs ending in paw feet joined by curule stretchers, lead liner; 26 1/2 x 16 1/2 in. Provenance: Property from the Collection of Josephine and Walter Buhl Ford II.

Estimate: \$ 800.00 - \$ 1200.00

Lots 761 - 770



Lot #761: CONTINENTAL DRESS SWORD WITH GILT-METAL AND MOTHER-OF-PEARL HANDLE, A SCIMITAR AND PAIR OF SHEARS

The sword with crowned terminal and cross piece, the scimitar with rope-banded handle and bamboo sheath; 11 1/2 to 34 in.

Estimate: \$ 150.00 - \$ 250.00



Lot #762: TWO SCALES

The first a Fairbanks cast iron, gold and silver scale patented 1879, and a French brass disc scale on onyx circular base; 4 3/4 x 10 in. and 8 3/4 x 5 in.

Estimate: \$ 225.00 - \$ 375.00



Lot #763: PAIR OF CONTINENTAL-STYLE BRASS-MOUNTED WALNUT CUTLERY BOXES

Each serpentine fronted sloping lid with central rosette, opening to velvet-lined slots, the case with scrollwork escutcheon and lion-headed ring drop handles; 19 x 8 1/4 x 8 1/2 in.

Estimate: \$ 1000.00 - \$ 1500.00



Lot #764: GEORGE III INLAID MAHOGANY WHEEL BAROMETER

Signed F. Molton, St. Lawrence Norwöh.; incorporating 2 engraved steel dials within a case with balloon crest and base, checkered edge.

Estimate: \$ 250.00 - \$ 550.00



Lot #765: EMPIRE-STYLE BRONZE AND SIENNA MARBLE ENCRIER

Centered by a lidded reeded tripod well, flanked by either side by a lidded urn on fluted stem and wreath and square base, the stand fronted by pen trough; 7 1/2 x 12 3/4 x 6 in.

Estimate: \$ 250.00 - \$ 450.00



Lot #766: FRENCH CHINOISERIE YELLOW GROUND CLOISONNÉ AND GILT-METAL EIGHT-PIECE DESK SET

Comprising an inkstand with central lidded well, pair of candlesticks, pair of angular vases, an hexagonal vase, a bell and a chamber stick, with floral stems on lattice ground; 2 3/8 to 7 3/4 in.

Estimate: \$ 300.00 - \$ 500.00



Lot #767: LOUIS XVI-STYLE GILT-METAL MOUNTED WALNUT HUMIDOR ON LATER STAND

Retailed by Benson & Hedges; the 1/4-veneered hinged top with outset canted corners above a case with bow-knotted floral swags within beaded encadrements; 20 3/4 x 22 x 13 in.

Estimate: \$ 500.00 - \$ 1000.00



Lot #768: EMPIRE-STYLE MAHOGANY AND ORMOLU-MOUNTED BAROMETER

41 3/4 x 5 3/4 in.

Estimate: \$ 800.00 - \$ 1200.00



Lot #769: LOUIS XVI-STYLE CARVED GILTWOOD BAROMETER/THERMOMETER

The main movement German; the dial with shellwork and bow-knot drapery swags, continuing down to base, the flower-capped lyre crest; 39 x 17 in.

Estimate: \$ 800.00 - \$ 1200.00



Lot #770: CONTINENTAL BRASS DOUBLE SCALE

The 2-part reeded stem with lion terminal supporting 2 graduated fish-form bars suspending the chained pans, the shaped base fitted with 9 weights; 24 x 17 in.

Estimate: \$ 600.00 - \$ 800.00



Lot #770A: CONTINENTAL BRASS OIL LAMP

The pierced back plate with crown and 2 rearing lions, on trestle supports with bird finials, joined by a lidded 8 well holder; 10 3/4 x 10 1/2 x 4 in. Provenance: Parke Bernet Galleries, NY, March 16, 1967, Sale 2530, lot 20.

Estimate: \$ 300.00 - \$ 600.00

Lots 771 - 780



Lot #771: TÔLE PEINTE DECORATED BOX

11 x 11 1/2 x 7 in.
Estimate: \$ 400.00 - \$ 800.00



Lot #772: BIEDERMEIER-STYLE GILT-METAL AND EBONIZED WOOD CLOCK

The 5 1/4 in. paper face within oak leaf and acorn surround and the entwined snake stem on ebonized base; 19 3/4 in., diam of base: 6 1/8 in.
Estimate: \$ 400.00 - \$ 800.00



Lot #773: PAIR OF CHARLES X MARBLEIZED TOLE ANGULAR BEAKER VASES

Each tapered bowl with gilt veining on black and fold-over rim, the gilt-metal winged paw feet on square bases; with liners; 12 5/8 x 7 1/2 x 7 1/2 in.
Estimate: \$ 800.00 - \$ 1200.00



Lot #774: FRENCH GILT-METAL MOUNTED CUT-GLASS COFFRET

The chamfered lid with engraved monogram, above tapered sides with cornucopia-applied keyhole plate and die-cast bands, on winged satyr mask feet; 5 x 6 1/4 x 4 1/4 in.
Estimate: \$ 500.00 - \$ 800.00



Lot #775: PAIR OF LOUIS XVI-STYLE GILT-METAL MOUNTED VEINED MARBLE URNS AND COVERS

Each with pierced rim and angular handles rising from tassled lion's head foliate and wreath stem and bead-banded base, the cover with pomegranate knob; 16 x 7 1/2 in.
Estimate: \$ 1000.00 - \$ 1500.00



Lot #776: TÔLE PEINTE SAFFRON-GROUND OVAL TRAY

The gallery pierced with handles, centered by a floral cluster encircled by sprigs; 29 x 21 1/2 in.
Estimate: \$ 200.00 - \$ 400.00



Lot #777: SET OF SIX CHINESE PAINTED PAPER WALLPAPER PANELS

Variouly painted with a crane, other colorful fowl and birds in flight or perched on flowering branches; one with flowering tree without birds, two enclosed by petal-tip carved giltwood frame; 7 ft. 11 in. x 3 ft. 10 1/2 in., 7 ft. 9 in. x 3 ft. 5 in. and 7 ft. 7 in. x 3 ft. 3 in.

Estimate: \$ 1000.00 - \$ 2000.00



Lot #778: PAIR OF CHINOISERIE POTTERY SEATED FIGURES, MOUNTED ON LAMP STANDS

Modeled as a man with mandolin or a lady with violin, on stepped marbelized stands; 23 x 10 x 9 in.

Estimate: \$ 600.00 - \$ 800.00



Lot #779: PAIR OF LOUIS XV-STYLE GILT-BRONZE CANDLESTICKS AND A CLOCK WITH PORCELAIN MOUNTS

The pair each cast with 4 adorsed dolphins and shell nozzle and base, with the seated Kwan Yin backed by a tree with porcelain flowers, centering the drum-cased clock with enamel dial; 10 1/2 x 6 3/4 in. and 16 1/2 x 12 in.

Estimate: \$ 1000.00 - \$ 2000.00



Lot #780: FRENCH GILT-METAL BEVELED GLASS CLOCK

Retailed by Tiffany & Co., NY; the white enamel dial with leaf-tip surround, the case with reeded Corinthian colonettes supporting leaf tip and fluted cornice; 12 1/2 x 7 1/2 x 6 in.

Estimate: \$ 700.00 - \$ 900.00

Lots 781 - 790



**Lot #781: FRAMED PRESSED COMPOSITION RELIEFS
MADE AND MOUNTED BY A. READY, LONDON**

Including Babylonian, Assyrian and Cyprian cylinder seals, and classical profiles, contained in ebonized and parcel-gilt shadow box frame; 17 x 13 1/2 in.

Estimate: \$ 300.00 - \$ 600.00



**Lot #782: FRENCH BOARD BOX WITH GLASS COVER:
"LE PETIT CHAPEAU"**

The cover with Napoleon's hat, beneath monogram, crossed swords with tassels and title; 1 in., 3 1/4 in.

Estimate: \$ 100.00 - \$ 200.00



Lot #783: FRENCH ENAMEL RONDEL

Depicting Napoleon shaking the hand of an officer, contained in an Empire-style gilt-metal maroon velvet-lined frame with ribbon-tied wreath crest; frame: 5 1/2 x 4 3/8 in.

Estimate: \$ 150.00 - \$ 250.00



**Lot #784: FRENCH HORN BOX FITTED WITH A GILT-
METAL RONDEL OF LAFAYETTE BY MOREL**

Signed and dated 1825; 7/8 in., 3 1/4 in. diam.

Estimate: \$ 300.00 - \$ 600.00



**Lot #785: CONTINENTAL IVORY-MOUNTED CARVED
YEWOOD CASTER AND MATCHING MUSTARD POT**

Each with reeded leaf bowl, the caster with bell-form screw-off cover, ivory knob and stem; 5 1/4 in. Provenance: Property from the Estate of Janet Welldon Graham, Julia Hoyt Welldon Graham, Julia Hoyt Welldon and the Hoyt family of New York City and Staatsburgh, New York.

Estimate: \$ 200.00 - \$ 400.00



Lot #786: FRENCH BLUE FELT FOREIGN LEGION CAP

Retailed by Pierre Huard & Cie, Paris 59; with red felt flat top and visor, the strap held by 2 buttons impressed, "Legion Etrangere," 4 1/2 x 10 1/4 in.

Estimate: \$ 100.00 - \$ 200.00



Lot #787: SMALL CARVED PANEL

7 1/2 x 7 1/2 x 2 1/2 in. Provenance: From Oldwalls, the home of sculptor Chester Beach.

Estimate: \$ 100.00 - \$ 200.00



Lot #788: SET OF SIX FRAMED PRESSED ROSSO ANTICO COMPOSITION MEDALLIONS

Each incorporating classical profiles or figure groups, after Greek and Roman models, contained in green-ground shadow boxes with entrelac and acanthus leaf borders; 15 3/4 x 12 1/4 in.

Estimate: \$ 1200.00 - \$ 1800.00



Lot #789: RUSSIAN ICON OF A BISHOP SAINT

Depicted holding an icon of Christ with hand on orb, flanked at the upper corners by an evangelist and the Virgin, later giltwood frame; 16 x 13 in. and 18 3/4 x 16 in.

Estimate: \$ 1500.00 - \$ 3000.00



Lot #790: JAUCHEN'S OLDE COPPER SHOP HAMMERED COPPER VASE

Impressed mark on base and "San Francisco" and 3 over 130; applied with verdigris brass eucalyptus branch; 9 3/4 x 4 3/4 in.

Provenance: From Oldwalls, the home of sculptor Chester Beach.

Estimate: \$ 100.00 - \$ 200.00

Lots 791 - 800



**Lot #791: SPANISH CARVED WOOD HALF-LENGTH
FIGURE OF A SAINT**

The bearded head tilted left, wearing a cloak over an open-neck shirt, integral octagonal base; 11 3/4 x 7 in.

Estimate: \$ 600.00 - \$ 800.00



**Lot #792: CONTINENTAL RELIEF-CARVED IVORY
PLAQUETTE OF ST. JOHN THE BAPTIST**

Rendered in a shallow pointed arch niche, wearing animal skin and holding a disc of the Pascal lamb, fitted into velvet-matted wood table frame; 4 1/8 x 1 1/4 in.

Estimate: \$ 100.00 - \$ 200.00



**Lot #793: CONTINENTAL PORCELAIN PLAQUE:
"MADAME VIGEE LEBRUN"**

After the artist's self portrait, depicted holding a palette, with brush raised to canvas, later mat and frame; 5 x 3 1/2 in., 8 x 6 1/2 in. (frame).

Estimate: \$ 200.00 - \$ 400.00



**Lot #794: PAIR OF FRENCH GREEN-GROUND ENAMEL
TUBS**

Each with pearlwork black fret bands supporting swags enclosing strapwork, loose ring handles and removable liners; 4 5/8 in., 4 3/8 in. diam.

Estimate: \$ 400.00 - \$ 800.00



**Lot #795: LOUIS XVI-STYLE GILT-METAL MOUNTED
SEVRES CARD CASE AND ROYAL COPENHAGEN
PORCELAIN ETUI**

The one with striped surface centering oval reserves of 2 maidens reading or a lake view, the etui modeled as a baby, with silver-plated hinged lid; 3 7/8 and 4 in.

Estimate: \$ 300.00 - \$ 600.00



**Lot #796: LOUIS XVI-STYLE GILT-METAL SMALL
CARTEL CLOCK**

Retailed by Tiffany & Co., NY; the enamel face within case molded with pomegranates, acanthus leaf scrolls and fruit crest, the fluted stem above pinecone pendant; 14 1/4 x 6 x 2 3/8 in.

Estimate: \$ 300.00 - \$ 600.00



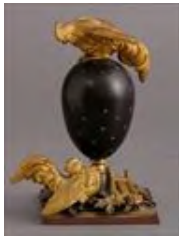
Lot #797: TWO FRENCH ENAMEL SPHERICAL LIDDED BOXES

The one, sky blue, with quatrefoil scene of 18th c. couple within pearlwork border, the other, yellow ground, with turquoise beading and black loops, on tripod feet; 5 1/4 and 6 in.
Estimate: \$ 500.00 - \$ 800.00



Lot #798: NEOCLASSICAL-STYLE PORCELAIN PILLAR CLOCK

The 2 1/8 in. enamel dial with gilt-metal beaded and reeded surround, the pillar with husk bands and pink roses on gilt-dot ground; gilt ribbon-bound wreath base and notched corners; 6 1/8 x 4 5/8 in.
Estimate: \$ 200.00 - \$ 300.00



Lot #799: NAPOLEON III MIXED METALS URN AND COVER

The ovoid stellate-incised black bowl with a rooster gazing down at another, flanked by a lyre and grape leaves, on red-stained base; 5 1/2 x 4 1/4 in.
Estimate: \$ 300.00 - \$ 600.00



Lot #800: TWO SIMILAR CHINOISERIE ENGRAVED GLASS AND GILT-METAL VASES

Each angular trumpet-form bowl with branch pattern, set into a base pierced with bird panel, blossom handles; 8 1/4 x 8 in.
Estimate: \$ 200.00 - \$ 400.00