

Lots 801 - 810



Lot #801: GERMAN SCHOOL (L. 19TH C): "WILHELM II IMP. REX."

Bronze medallion, contained in crowned gilt-metal frame, on verde antico marble stand; 9 1/4 in., 4 1/2 in. diam.

Estimate: \$ 100.00 - \$ 200.00



Lot #802: LOUIS XV-STYLE POTTERY BUST OF A LADY

27 in.

Estimate: \$ 300.00 - \$ 600.00



Lot #803: FRENCH PAINTED PAPER FAN

With an 18th c. mythological scene depicting a Roman soldier, maiden in a tent, chariot and 2 end figures, ivory sticks, within giltwood frame; 12 3/4 x 21 in. (frame).

Estimate: \$ 200.00 - \$ 300.00



Lot #804: RENAISSANCE-STYLE LEAD SPIRE

The pole with pointed tip and graduated c and s-scrolls and addorsed sea horses, above conical base, mounted on wrought iron tripod and faux marble plinth; 7 ft. 6 1/2 in. (overall) x 18 (approx.) x 30 in. (of plinth).

Estimate: \$ 1000.00 - \$ 1500.00



Lot #805: TWO FRENCH GILT-BRONZE MOUNTED EBONIZED WOOD GUIDONS

Each bearing initials, "R.F." and with pointed tip, the longer with ribbon-bound laurel wreath, the other with husk swag; 6 ft. 7 in. and 6 ft. 2 in.

Estimate: \$ 400.00 - \$ 800.00



Lot #806: REGENCY BRASS-BANDED MAHOGANY BUCKET

The cylindrical bowl with bombé bands and 3 brass straps, lion-headed ring handles and paw feet; 12 1/2 in., 13 3/4 in. diam.

Estimate: \$ 200.00 - \$ 400.00



Lot #807: EMPIRE-STYLE BRONZE FIGURE OF AN EAGLE

Modeled with outspread wings, head turned to left and right claw on cylinder with pointed spiral reeded ends, on pedestal and veined marble stand.

Estimate: \$ 600.00 - \$ 800.00



Lot #808: REGENCY STUMPWORK AND PAINTED OVAL PANEL

Worked with a shepherdess and a youth gazing into a pool inscribed, "Thirsis," gilt-highlighted églomisé border, contained in a walnut and parcel-gilt frame; 26 x 33 in., 32 x 39 1/4 in. (frame).

Estimate: \$ 400.00 - \$ 800.00



Lot #809: NEWTON'S NEW AND IMPROVED TERRESTRIAL TABLE TOP GLOBE

Published Jan. 1st 1849; the pivoting orb with brass ring, the stand with signs of the Zodiac, on turned legs joined by x-stretcher; 18 in., 17 in. diam. of stand.

Estimate: \$ 1200.00 - \$ 1800.00



Lot #810: CONTINENTAL CARVED WOOD SNUFF BOX

The pierced hinged lid carved with Apollo and attendant, the reverse with a biblical scene of angel, Abraham and Issac; 1 1/2 x 3 3/4 in.

Estimate: \$ 800.00 - \$ 1200.00

Lots 811 - 820



Lot #811: DECORATIVE PAINTED CANVAS THREE-FOLD SCREEN

The front with a coach scene within drapery-hung and shell border, the reverse with an assemblage of aviary birds; 5 ft. x 5 ft. (fully open).

Estimate: \$ 150.00 - \$ 250.00



Lot #812: CONTINENTAL FAIENCE GRAPE-FORM BOX AND COVER

Modeled as an oblong bunch of mananese grapes; 3 x 6 3/8 in.

Provenance: Property from the Collection of Josephine and Walter Buhl Ford II.

Estimate: \$ 150.00 - \$ 300.00



Lot #813: LOUIS XVI CARVED GILTWOOD BAROMETER

The painted dial signed Maison Lemiere, Paris, above thermometer dial, case with laurel branches and a crest centering a globe; 38 1/2 x 16 in.

Estimate: \$ 500.00 - \$ 800.00



Lot #814: REGENCY MAHOGANY TEA POY

The hinged dome top with ebonized moldings, opening to 3 divisions, the tapered case on ringed pedestals and c-scroll legs; 30 x 22 x 14 in.

Estimate: \$ 1000.00 - \$ 1500.00



Lot #815: FRENCH BRONZED AND GILT-METAL MOUNTED BLACK MARBLE THREE-PIECE CLOCK GARNITURE

Retailed by Henry T. Brown & Co.; the clock in shaped case with lion-headed drop handles and surmounted by the figure of Diana with hound, the 2-handled vases with covers centering crane knobs, the bases with rosso antico tier and scroll feet; 21 3/4 x 13 7/8 and 16 1/4 x 13 7/8 in.

Estimate: \$ 1500.00 - \$ 3000.00



Lot #816: FRENCH MAROON-GROUND TÔLE PEINTE WALL CLOCK

Signed Sironval, Palais Royal No 142; the case painted in gilt with grape vines, brass ring drop finial; 1 7/8 in. diam. Provenance: Property from the Collection of Josephine and Walter Buhl Ford II. Estimate: \$ 400.00 - \$ 800.00



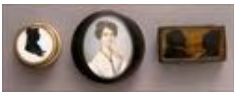
Lot #817: GEORGE III SILK EMBROIDERY: "A MAP OF ENGLAND AND WALES"

Inscribed, "Charlotte Lancaster, aged 7 years, 1789," showing England, Wales and part of Scotland, contained in bird's eye maple and parcel-gilt frame; 26 1/2 x 23 1/2 in. (frame). Estimate: \$ 150.00 - \$ 300.00



Lot #818: PAIR OF BACCARAT MOLDED GLASS VASES ON GILT-METAL BASES

Relief marked "Baccarat;" each angular tapered bowl with floral stems rising from a grasshopper base, the narrow "bamboo" base on ball feet. Estimate: \$ 500.00 - \$ 800.00



Lot #819: THREE CONTINENTAL LIDDED BOXES

The one tortoiseshell with oval watercolor on ivory miniature of a young woman, the next red ground tortoiseshell and ivory with reverse silhouette profile on glass, the last, of bone, with facing silhouettes of a man and woman; 2 3/4 in., 1 7/8 and 3 1/4 in. diam. Estimate: \$ 100.00 - \$ 200.00



Lot #820: THREE CONTINENTAL PAPIER MACHÉ BOXES WITH PAINTED COVERS

Two circular with Alpine scene or 2 sisters, the last rectangular with turbaned girl reading, a slide underneath; 3 3/4 in., 3 3/4 in. diam. Estimate: \$ 200.00 - \$ 400.00

Lots 821 - 830



Lot #821: JENNENS AND BETTRIDGE PAPIER MÂCHÉ TRAY

With impressed mark; the oblong lobed and serpentine surface with gilt foliage, trellis and bubblework and swags; 31 1/4 x 25 1/2 in.
Estimate: \$ 800.00 - \$ 1200.00



Lot #822: NEOCLASSICAL-STYLE CARVED VERDE ANTICO MARBLE PEDESTAL

The square top above reeded shaft with pointed ends and curled leaf capital, on ribbon-bound wreath and square base; 45 x 15 x 15 in.
Estimate: \$ 800.00 - \$ 1200.00



Lot #823: LOUIS XVI-STYLE GILT-BRONZE CARTEL CLOCK

The enamel dial signed Raingo Fres., Paris, within a drapery-hung case with guilloche band, surmounted by an urn, the base applied with a female mask head, foliate scrolls and pendant plumes; 33 x 16 1/2 x 4 3/4 in.
Estimate: \$ 1200.00 - \$ 1800.00



Lot #824: BRITISH SCHOOL (E.19TH C.): PORTRAIT OF A YOUNG MAN

Watercolor on ivory miniature, set into later velvet mat and giltwood frame; 1 3/8 x 1 7/8 in., 6 x 4 3/4 in. (frame). Provenance: From Oldwalls, the home of sculptor Chester Beach.
Estimate: \$ 300.00 - \$ 600.00



Lot #825: PAIR OF CARVED IVORY MINIATURES OF NAPOLEON AND JOSEPHINE

He with uniform jacket with medals and epaulettes, she with veiled tiara, initials N. or J. on shoulders, velvet-lined gilt-metal frames; 4 1/4 in.
Estimate: \$ 200.00 - \$ 300.00



Lot #826: CONTINENTAL OVAL PORTRAIT MINIATURE OF A LADY WEARING PEARL HEADBAND

Watercolor on ivory, unframed; 2 3/4 x 2 1/4 in.
Estimate: \$ 300.00 - \$ 600.00



**Lot #827: FRENCH MINIATURE PORTRAIT RONDEL:
THE YOUNG NAPOLEON**

Watercolor, shell-chased brass band and ebonized frame; frame: 5 1/2 x 5 3/4 in.

Estimate: \$ 200.00 - \$ 300.00



**Lot #828: OVAL PORTRAIT MINIATURE OF AN EARLY
19TH CENTURY GENTLEMAN**

Watercolor on ivory, contained in gilt-metal frame with flowerhead and leaf border, later ring handle; frame: 2 3/4 x 2 in.

Estimate: \$ 200.00 - \$ 400.00



**Lot #829: THREE FRENCH OVAL PORTRAIT
MINIATURES OF EMPRESS JOSEPHINE AND TWO 19TH
C. LADIES**

The first signed Geru__, the pair each signed Stieler, within brass ribbon-bound borders and simulated tortoiseshell frames; frame: 3 x 2 1/2 in. to 3 1/4 x 2 5/8 in.

Estimate: \$ 500.00 - \$ 700.00



**Lot #830: E. SEGUR: MINIATURE PORTRAIT RONDEL OF
EMPRESS JOSEPHINE**

Watercolor on ivory, signed to left, gilt-metal frame; 4 in.

Estimate: \$ 300.00 - \$ 400.00

Lots 831 - 840



Lot #831: AMERICAN SCHOOL (19TH C.): PORTRAIT OF A YOUNG WOMAN IN PINK DRESS

Watercolor on ivory, gilt mat and later English silver frame; 3 5/8 x 3 in. (image).

Estimate: \$ 300.00 - \$ 600.00



Lot #832: ATTRIBUTED TO ANSON DICKSON: PORTRAIT OF BENJAMIN TROTT

Watercolor on ivory, within gilt-metal and enamel frame; 3 x 2 3/8 in.

Estimate: \$ 1000.00 - \$ 1500.00



Lot #833: OVAL PORTRAIT MINIATURE, SAID TO BE GENERAL BENEDICT ARNOLD

Watercolor on ivory, ebonized frame with brass acorn hook, paper label on reverse with date 1801; frame: 4 1/2 x 4 in.

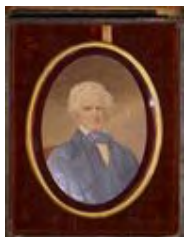
Estimate: \$ 100.00 - \$ 200.00



Lot #834: CONTINENTAL OVAL PORTRAIT MINIATURE OF A YOUNG OFFICER

Watercolor on ivory, gilt-metal frame with glass cased reverse; frame: 2 3/4 x 1 7/8 in.

Estimate: \$ 200.00 - \$ 300.00



Lot #835: OVAL PORTRAIT OF A GENTLEMAN, SAID TO BE DEACON AARON WARD

Watercolor on thick paper, velvet and gilt-metal frame contained in leather case, together with a letter from Sara Ward, headed, New York, July 8th, 1819.

Estimate: \$ 100.00 - \$ 200.00



Lot #836: ENGLISH SCHERENSCHNITTE, DATED 1807

The cut out paper with royal coat of arms above "The Lord's Prayer," within vinework, burrwood, ebonized and parcel gilt frame; 14 x 12 x 2 in.

Estimate: \$ 400.00 - \$ 800.00



Lot #837: TWO FRENCH PRESSED CARTONNIER LIDDED BOXES

The oval box with hand-colored engraving of Napoleon napping on a chair, the circular box with head of Empress Josephine, brass-edged case; 1 x 6 in., 4 1/4 in. diam.

Estimate: \$ 300.00 - \$ 600.00



Lot #838: FRENCH TORTOISESHELL BOX FITTED WITH IVORY PROFILE BUST OF NAPOLEON THE GENERAL

1 3/4 in., 3 1/4 in. diam.

Estimate: \$ 400.00 - \$ 800.00



Lot #839: REGENCY BRASS-INLAID ROSEWOOD TEA CADDY

Of sarcophagus form with vinework inlay, opening to 2 lidded recesses with silvered paper lining, ring drop handles, raised on bun feet; 6 1/4 x 8 x 5 1/8 in.

Estimate: \$ 300.00 - \$ 600.00



Lot #840: GEORGE III-STYLE INLAID MAHOGANY LETTER BOX IN THE FORM OF A KNIFE BOX

The sloping serpentine fronted lid with oval conch shell, opening to 5-division interior, the case with brass shield-form escutcheon; 15 x 8 3/4 x 11 3/4 in.

Estimate: \$ 150.00 - \$ 250.00

Lots 841 - 850

Lot #841: THREE CONTINENTAL BOXES



Comprising a brass-lined tortoiseshell purse with pietra dura floral plaque; a velvet box with mother-of-pearl head of a Roman girl; and a gilt-metal book-form box with reverse print on glass; 2 5/8 x 3 7/8 in.

Estimate: \$ 150.00 - \$ 250.00

Lot #842: PAIR OF GEORGE III INLAID MAHOGANY CUTLERY BOXES



Each serpentine-fronted sloping and hinged top with diagonal checkered stringing and pointed oval floral medallion, opening to slotted interior, the case with silver-plated keyhole escutcheon and line and checkered inlay; 15 1/4 x 8 3/4 x 11 3/4 in.

Estimate: \$ 2000.00 - \$ 3000.00

Lot #843: REGENCY BRASS-MOUNTED BLACK LACQUER SEWING BOX



The hinged flattened dome top with chinoiserie figure reserve, opening to a fitted interior, the tapered case with loose ring drop handles, raised on flower, grape and paw feet; 4 3/4 x 13 3/4 x 11 1/2 in. Provenance: Property from the Estate of Janet Welldon Graham, Julia Hoyt Welldon Graham, Julia Hoyt Welldon and the Hoyt family of New York City and Staatsburgh, New York.

Estimate: \$ 300.00 - \$ 600.00

Lot #844: ENGLISH PAPIER MÂCHÉ CIRCULAR PATCH BOX



The lid with engraving, "Glory to the American Arms," 3/4 in., 3 5/8 in. diam.

Estimate: \$ 100.00 - \$ 200.00

Lot #845: ENGLISH REPOUSSÉ BRASS-LIDDED CIRCULAR BOX



The lid with profile bust of General Washington, the reeded case with Greek fret band; 1 in., 2 1/8 in. diam.

Estimate: \$ 100.00 - \$ 200.00

Lot #846: GEORGE III ANGLO-INDIAN VIZAGAPTAM ENGRAVED IVORY AND SANDALWOOD TEA CADDY



The hinged lid with oval wreath, scrollwork and flowerhead bands, opening to 2 lidded boxes and central recess, the case with flowerhead band; 6 x 12 x 6 1/4 in.

Estimate: \$ 800.00 - \$ 1200.00



Lot #847: REGENCY PENWORK WORK BOX

The dome hinged cover with view of walled castle, the case with swing handle and fitted drawer with towers and trees; 7 3/8 x 10 1/4 in.

Estimate: \$ 300.00 - \$ 600.00



Lot #848: TWO GEORGE III INLAID SATINWOOD TEA CADDIES

The larger with 3 applied engraved oval figural scenes, opening to 2 lidded boxes and central well, brass lion's head ring drop handles, the other with oval flame mahogany plaques; 5 3/4 x 12 1/4 in. and 4 3/8 x 4 5/8 in.

Estimate: \$ 400.00 - \$ 600.00



Lot #849: GEORGE III INLAID MAHOGANY HANGING CRIBBAGE BOARD

Inlaid with initials and the date 1794 flanking a small mirror with 12 stick plaques, the box base with sliding lid; 14 1/2 x 3 5/8 x 2 in.

Estimate: \$ 150.00 - \$ 250.00



Lot #850: GEORGE III ENAMEL MOUNTED AND PAINTED SMALL OVAL GAME BOARD

Centered by a cobalt-ground box lid inscribed "A Trifle from Bath," within floral swags and marker holes; 6 1/2 x 4 1/2 in.

Estimate: \$ 100.00 - \$ 200.00

Lots 851 - 860



Lot #851: PAINTED WOOD DOCUMENT BOX WITH WROUGHT IRON LOCK

The flattened dome lid and front panel with crossed floral branches, fitted with drop hinge and lock plate; 5 1/2 x 9 3/8 x 5 in.
Estimate: \$ 300.00 - \$ 500.00



Lot #852: TWO VICTORIAN BOXES

The larger, burr walnut with brass-mounted corners, shield-shape escutcheon and recessed handles, the other a rosewood letter box with mother-of-pearl plaques, "Answered" and "Unanswered," 7 1/4 x 7 3/4 x 7 3/4 in. and 4 x 9 x 4 in.
Estimate: \$ 250.00 - \$ 450.00



Lot #853: ITALIAN SCHOOL (16TH C.): PROFILE PORTRAIT OF A BEAUTY

Possibly Cremonan, watercolor on curved panel, framed within lobed pointed niche on spiral-twist columns; 15 1/2 x 13 in.
Provenance: Richard Philps Antiques, London.
Estimate: \$ 3000.00 - \$ 6000.00



Lot #854: ITALIAN SCHOOL (16TH C.): PROFILE PORTRAIT OF A BEAUTY

Possibly Cremonan, watercolor on curved panel, framed within lobed pointed niche on spiral-twist columns; 15 1/4 x 13 1/4 in.
Provenance: Richard Philps Antiques, London.
Estimate: \$ 3000.00 - \$ 6000.00



Lot #855: FRENCH WOVEN TAPESTRY

Depicting hunters in pursuit of animals with a chateau in the foreground, purchased by Chester Beach in 1937 or 1938 in New York at auction; 6 ft. 4 in. x 7 ft. 1 in. Provenance: From Oldwalls, the home of sculptor Chester Beach.
Estimate: \$ 2500.00 - \$ 4500.00



Lot #855A: HOLLOW-CAST POTTERY FIGURE OF A BULLDOG

Standing four square with head turned to left, wearing a narrow red collar; 11 3/4 x 14 1/2 in. Provenance: The Estate of Cynthia Phipps.
Estimate: \$ 150.00 - \$ 250.00



Lot #856: ITALIAN RENAISSANCE CARVED, PAINTED AND PARCEL-GILT WALL PANEL: "BALAAM AND HIS ASS"

The bearded figure with cap and belted tunic his right hand holding a staff, flanked by the seated ass, the flat reverse with oval hand written paper label; 11 1/2 x 11 1/2 x 1 3/4 in.

Estimate: \$ 800.00 - \$ 1200.00



Lot #857: NORTHERN RENAISSANCE-STYLE CARVED OAK RONDEL: "PENTA CECILIA GENERONTS..."

Centered by the head of a woman wearing a breast plate with addorsed eagles and a lion at one shoulder, within inscribed border; 31 in. diam.

Estimate: \$ 400.00 - \$ 800.00



Lot #858: LATE MEDIEVAL CARVED WOOD GROUP OF THE MADONNA AND CHILD

She seated with veiled crown, her right arm extended and holding the child with orb on left knee, on half-round base, traces of gesso later; 34 x 12 x 11 3/4 in. Provenance: The Lundquist Family.

Estimate: \$ 800.00 - \$ 1200.00



Lot #859: PORTRAIT OF KAISER MAXIMILIAN I

Carved wood relief, with paper label on reverse, contained in 17th c.-style ebonized wood frame; 10 1/4 x 7 in. (sight), 17 3/4 x 14 1/2 in. (frame).

Estimate: \$ 300.00 - \$ 600.00



Lot #860: PAIR OF CONTINENTAL BAROQUE CARVED HALF-ROUND FIGURES OF SAINTS

The one St. Peter holding the keys, the other holding a sword, traces of polychrome gilt decoration; 12 3/4 and 12 1/2 in.

Estimate: \$ 800.00 - \$ 1200.00

Lots 861 - 870



Lot #861: CONTINENTAL BAROQUE CARVED, PAINTED AND PARCEL-GILT FIGURE GROUP OF ST. DOMINIC AND CHRIST CHILD

The tonsured monk with belted robe and sandled feet, the child holding an orb, contained in a hanging niche with shell and foliate crest, urn finials, marbelized pilasters and floral-painted back panel; 14 1/2 x 19 x 9 1/2 in., 30 in. diam.

Estimate: \$ 400.00 - \$ 800.00



Lot #862: BAROQUE-STYLE IVORY AND EBONY OBELISK

The flared shaft beneath ball finial and with recessed corners, the base with arched pediments, 2 applied with crowned cartouches of 3 fleur de lys; 25 x 7 x 7 in.

Estimate: \$ 800.00 - \$ 1200.00



Lot #863: CONTINENTAL ROCOCO-STYLE CARVED IVORY MINIATURE CLOCK

The 2 3/8 in. dial within a drum case surmounted by a putto with music scroll, conducting 4 musical cherubs; 7 3/4 x 6 3/4 in.

Estimate: \$ 1000.00 - \$ 1500.00



Lot #864: THREE CONTINENTAL SMALL CARVED IVORY FIGURES

The largest, the Madonna praying, on ebonized stand, the next the Queen of heaven holding Christ child, the last a bearded monk, on ebonized stand; 2 to 3 3/4 in.

Estimate: \$ 500.00 - \$ 800.00



Lot #865: CONTINENTAL CARVED IVORY FIGURE GROUP: "CUPID AND PSYCHE"

The winged god with arm about the waist of the nymph, cylindrical pedestal; 10 1/2 in.

Estimate: \$ 800.00 - \$ 1200.00



Lot #866: GERMAN SCHOOL (E. 17TH C.): "KONIGIN MAGDALENA V. OSTERREICH"

Watercolor on ivory miniature, the gilt-metal frame with silver-plate hinged back repoussé with I.H.S. monogram; 5 x 4 1/4 in. (frame).
Estimate: \$ 300.00 - \$ 600.00



Lot #867: TWO CONTINENTAL CARVED IVORY TABLE DECORATIONS

Comprising the sleeping lion, after Thorwaldsen, "Helvetiorum Fidei Ac Virtute" and a model of the leaning tower of Pisa, in glass dome set into marble base; 2 1/4 x 5 in. and 5 x 3 1/2 in.
Estimate: \$ 600.00 - \$ 800.00



Lot #868: CONTINENTAL CARVED IVORY FIGURE OF HENRI II

Wearing a plummed hat and holding a scarf, titled at base, ebonized stand; 9 1/2 in.
Estimate: \$ 700.00 - \$ 900.00



Lot #869: PAIR OF CONTINENTAL CARVED IVORY FIGURES OF NUDE GLADIATORS, AFTER THE ANTIQUE

Identically modeled lunging forward with shield around left forearms, one with sword in right hand, on tortoiseshell grained plinths; 7 x 4 3/4 in.
Estimate: \$ 700.00 - \$ 900.00



Lot #870: PAIR OF RENAISSANCE-STYLE BRASS LION CHENETS

Each rearing and roaring beast clutching a spiral-twist bar, on octagonal base; 12 1/2 x 9 1/2 x 6 3/4 in.
Estimate: \$ 400.00 - \$ 600.00

Lots 871 - 880



Lot #871: PAIR OF LOUIS XV-STYLE BRONZE AND GILT-METAL LION CHENETS

Each roaring beast climbing on scrollwork base cast with shellwork and acanthus scrolls, on concave-sided base and scroll feet; 11 1/4 x 11 1/4 x 6 in.

Estimate: \$ 1000.00 - \$ 2000.00



Lot #871A: PAIR OF BRASS FIGURES OF REARING STALLIONS

Each with windswept mane and dressed with animal skin saddle, on rectangular base; 22 1/2 x 22 1/2 x 8 in. Provenance: The Estate of Cynthia Phipps.

Estimate: \$ 800.00 - \$ 1200.00



Lot #872: PAIR OF ADAM-STYLE GILT-METAL ANDIRONS

Each flattened spiral-fluted urn stem cast with bow-knot beaded fans and ram's head handles beneath anthemion, the base applied with rosette; 27 1/4 x 10 1/4 in.

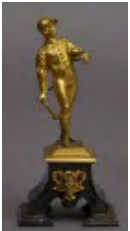
Estimate: \$ 500.00 - \$ 700.00



Lot #873: PAIR OF LOUIS XVI-STYLE GILT-BRONZE CHENETS AND A TRESTLE FIRE SCREEN

Each with 2 graduated flambeau urns, the one with ram's head handle, joined by c-scroll bar and husk swags, the cartouch-shape screen with panel centering 2 cherubs and flambeau plinth; 15 x 16 in. and 28 x 29 in.

Estimate: \$ 1000.00 - \$ 1500.00



Lot #873A: GILT-METAL FIGURE OF A JOCKEY

Modeled standing, holding a crop and a ball-form trophy, on silvered base centered by a gilt horse head; 7 5/8 in. Provenance: The Estate of Cynthia Phipps.

Estimate: \$ 600.00 - \$ 900.00



Lot #874: PAIR OF NEOCLASSICAL-STYLE BRONZE AND GILT-METAL ANDIRONS

Each vertical pierced stem surmounted by an urn flanked by birds, the flared petal-flute base on claw and ball feet surmounted by quatrefoils; 27 x 10 1/2 x 8 1/4 in.

Estimate: \$ 700.00 - \$ 900.00



Lot #875: REGENCY BLACK-GROUND TÔLE PEINTE COAL BIN AND COVER

The tiered removable cover with urn knob, the tapered sides with gilt bands and ring handles, raised on lion's paw feet, removable liner; 16 1/2 x 18 1/2 in.

Estimate: \$ 500.00 - \$ 700.00



Lot #876: TWO REGENCY-STYLE BRASS FENDERS AND A PAIR OF ANDIRONS

The one with pierced bead-banded foliate ovals and floral appliques, the other with 2 pierced bands, each on lion's paw feet, the andirons with urn finials; 20 x 4 ft. and 46 3/4 in.

Estimate: \$ 500.00 - \$ 800.00



Lot #877: BRASS-HANDLED HEARTH SHOVEL AND A PAIR OF TONGS

The one with spade-shape bowl, each with swelling handle; 25 and 26 1/2 in. Provenance: From the Collection of Paul F. Walter, formerly at 420 Ox Pasture Road, Southampton, New York.

Estimate: \$ 600.00 - \$ 800.00



Lot #878: SEVRES-STYLE PORCELAIN CANDLESTICK, MOUNTED AS A LAMP

The spiral-twist stem with 3 cherub ovals within gilt c-scrolls, on bleu celeste ground, the base with 3 music trophies, on tripod scroll feet; 18 3/4 in.

Estimate: \$ 700.00 - \$ 1000.00



Lot #879: PAIR OF COALPORT PORCELAIN CHAMBER CANDLESTICKS AND A COALBROOKDALE STICK

The pair with floral clusters, and c-scroll dolphin handles, the single with underglaze blue c d mark, of shell-form with applied flowers and tulip cup nozzle; 2 to 2 1/2 in.

Estimate: \$ 300.00 - \$ 400.00



Lot #880: TWO PAIRS OF ENGLISH BRASS TABLE CANDLESTICKS

Each tapered stem on circular or stepped base; each pair with one ejector; 8 1/4 and 9 1/2 in.

Estimate: \$ 200.00 - \$ 400.00

Lots 881 - 890



Lot #881: PAIR OF FAMILLE VERTE BLACK-GROUND JARS, MOUNTED AS LAMPS

Of baluster form, each with a bird, rockwork and flowering shrubs, giltwood cover and base; 16 1/2 in.

Estimate: \$ 400.00 - \$ 800.00



Lot #882: TWO SIMILAR FAMILLE ROSE PORCELAIN GINGER JARS AND COVERS, MOUNTED AS LAMPS

Each of baluster form, enamel painted with rockwork, peonies, song birds and butterflies, on Louis XVI-style gilt-metal wreath-bound base; 19 1/2 in.

Estimate: \$ 1000.00 - \$ 2000.00



Lot #883: PAIR OF FAMILLE ROSE RELIEF-DECORATED VASES, MOUNTED AS LAMPS

Of hexagonal baluster form with concave front, decorated with flower-filled vases and other household implements, ebonized wood covers and bases; to covers:17 1/2 in. Provenance: From the Estate of Cynthia Phipps.

Estimate: \$ 800.00 - \$ 1200.00



Lot #884: PAIR OF FAMILLE ROSE PORCELAIN BALUSTER-FORM VASES, MOUNTED AS LAMPS

Each with lotus and other marine plants, on puce ground with turquoise fu dog handles, hardwood bases and covers; to covers:16 1/2 in. Provenance: From the Estate of Cynthia Phipps.

Estimate: \$ 700.00 - \$ 900.00



Lot #885: PAIR OF CHINESE FAMILLE VERTE BLACK-GROUND JARS, MOUNTED AS LAMPS

Each of octagonal baluster form, with floral vinework, within sky blue borders, stained wood cover and base; 15 1/2 in.

Estimate: \$ 400.00 - \$ 800.00



Lot #886: BRONZE FLOOR LAMP, AFTER THE ANTIQUE

The pole stem with leaf-applied s-scroll arm and fitted with woven silvered metal shade, on quadruple lion's paw feet spaced by anthemion, circular base; 5 ft. 10 in.

Estimate: \$ 1000.00 - \$ 2000.00



Lot #887: PAIR OF BAROQUE-STYLE CARVED GILTWOOD TORCHERES, MOUNTED AS LAMPS

Each reeded, fluted and tiered foliate stem with shallow bell-form bowl and circular leaf tip and gadroon base; 4 ft. 2 1/2 in., 13 in. diam.
Estimate: \$ 800.00 - \$ 1200.00



Lot #888: VENETIAN ROCOCO-STYLE GOLD-FLASH GLASS EIGHTEEN-LIGHT CHANDELIER

The stem composed of pendant hung primary bowl and 2 smaller bowls joined by s-scroll supports, the tiered s-scroll arms with loose pendants and fitted with lobed bobeches, surmounted by a spray of daffodils and pear-form pendants; 4 ft. 2 in., approx. 42 in. diam.
Estimate: \$ 2000.00 - \$ 3000.00



Lot #889: PAIR OF LOUIS XV-STYLE CUT-GLASS MOUNTED GILT-METAL TEN-LIGHT CHANDELIERS

Each pear-form skeletal frame with foliate applied double scroll arms and tiered, faceted or plain tear drops; 49 x 24 in.
Estimate: \$ 2000.00 - \$ 4000.00



Lot #890: PAIR OF LOUIS XV-STYLE GILT-METAL TWO-LIGHT CANDELABRA FITTED WITH FAMILLE VERTE-STYLE PORCELAIN PARROTS

Each bird flanked by faux bois arms rising from concave-sided base applied with frogs and vipers, melon-form feet; 9 3/8 x 7 in.
Estimate: \$ 700.00 - \$ 900.00

Lots 891 - 900



Lot #891: PAIR OF LOUIS XV-STYLE GILT-BRONZE SIX-LIGHT CANDELABRA

Each spiral-twist flower and foliate-cast stem above bell-form base and tripod c-scrolls, supporting the foliate-cast spiral twist arms, electrified; 27 x 14 1/2 in.
Estimate: \$ 1500.00 - \$ 2500.00



Lot #892: PAIR OF LOUIS XV-STYLE GILT-BRONZE FIVE-LIGHT WALL APPLIQUÉS

Each ribbon-tied tasseled back supporting 2 quadruple s-scroll floral-entwined tiers of arms ending in foliate nozzle; 36 1/2 x 19 x 11 1/2 in.
Estimate: \$ 1500.00 - \$ 2500.00



Lot #893: SET OF FOUR LOUIS XV-STYLE GILT BRONZE FIVE-LIGHT WALL APPLIQUÉS

Each acanthus-molded support with leafy spiral twist arms ending in roll-over drip pans and nozzles; 28 1/2 x 19 x 15 1/2 in.
Estimate: \$ 3000.00 - \$ 6000.00



Lot #894: GEORGE III-STYLE CUT-GLASS EIGHTEEN-LIGHT CHANDELIER

The multi-knopped stem with drop-hung canopy and base, supporting 2 graduated tiers of s-scroll arms joined by faceted swags, with stellate pendants; 4 ft., 40 in. diam.
Estimate: \$ 1000.00 - \$ 2000.00



Lot #895: GEORGE III-STYLE CUT-GLASS TWELVE-LIGHT CHANDELIER

The orb and vase stem with drop-hung canopy and base, supporting 2 graduated tiers of s-scroll arms joined by faceted swags; 43 in., 36 in. diam.
Estimate: \$ 2000.00 - \$ 4000.00



Lot #896: PAIR OF LOUIS XVI-STYLE GILT-BRONZE THREE-LIGHT WALL APPLIQUÉS

Each vertical foliate and wheat back supporting the s-scroll arms ending in circular drip pans and foliate nozzle; 21 x 16 x 9 3/4 in.
Estimate: \$ 1000.00 - \$ 2000.00



Lot #897: TWO PAIRS OF LOUIS XVI-STYLE GILT-BRONZE TWO-LIGHT WALL APPLIQUÉS

Each tapered and fluted back with ram's head and husk-hung flambeau urn, supporting the c-scroll arms; 20 1/2 x 14 1/2 x 5 1/4 in.

Estimate: \$ 2000.00 - \$ 4000.00



Lot #898: PAIR OF LOUIS XVI-STYLE GILT-METAL THREE-LIGHT WALL APPLIQUÉS

The d-shape beaded and fluted support with trumpet holders, joined to foliate top by reeded rods joined by chain swags; 34 1/2 x 18 1/2 x 10 in.

Estimate: \$ 400.00 - \$ 800.00



Lot #899: PAIR OF LOUIS XVI-STYLE PAINTED AND PARCEL-GILT THREE-LIGHT WALL APPLIQUÉS

Each bow-knotted back supporting military trophy and the s-scroll arms; 4 ft. x 13 x 8 in.

Estimate: \$ 2000.00 - \$ 4000.00



Lot #900: PAIR OF LOUIS XVI-STYLE GILT-BRONZE NINE-LIGHT CANDELABRA

Each modeled as a putto holding a cornucopium from which rise the graduated tiers of leafy arms, the fluted pedestal with beading and ribbon-bound wreath, on octagonal base and 4 feet.

Estimate: \$ 1500.00 - \$ 2500.00