

## Lots 1 - 10



### **Lot #1: CHINESE ARCHAISTIC BRONZE TWO-HANDLED VASE**

The ovoid footed bowl applied with rondels at the shoulder flanked by ram's head handles; 13 in. tall.

Estimate: \$ 500.00 - \$ 700.00



### **Lot #2: ARCHAISTIC ENCRUSTED BRONZE POT**

The squat spherical bowl with beaded animal head spout, applied winged figure and swing handle; 5 1/2 x 7 3/6 in.

Estimate: \$ 200.00 - \$ 300.00



### **Lot #3: FOUR ARCHAISTIC BRONZE ARTICLES**

Comprising a Chinese pear-form lidded pot on stand with incised fret bands and swing handle, tripod phoenix-form tea pot and cover, Japanese lidded box with applied bird panels and figural knob and pierced baluster-form lantern with cherry blossoms; 7 7/8 to 9 3/4 in.

Estimate: \$ 300.00 - \$ 400.00



### **Lot #4: SIX ARCHAISTIC BRONZE ARTICLES**

Comprising a gu with raised strapwork belt, a flattened pear-form 2-handled vase, block-form lidded box, tripod pear-form lidded container with chain handle, Etruscan-type baluster-form jar with swing handle and pear-form footed and lidded jar, the teapot with band of blossoms in relief; 4 1/8 to 12 7/8 in., 4 3/8 to 8 1/2 in. diam.

Estimate: \$ 400.00 - \$ 600.00



### **Lot #5: MING-STYLE ARCHAISTIC BRONZE GU**

The beaker neck with sword leaf bands, above belted center and flared base, all with lion reserves; 10 in tall., 6 1/4 in. diam.

Estimate: \$ 250.00 - \$ 350.00



**Lot #6: CHINESE BRONZE FIGURE OF KWAN YIN AND JAPANESE FIGURE OF THE BUDDHA**

8 1/8 to 8 1/2 x 2 to 2 1/4 in.

Estimate: \$ 100.00 - \$ 200.00



**Lot #7: FIVE CHINESE BRONZE OR PATINATED FIGURES AND A GROTESQUE BEAST**

3 1/2 to 7 1/2 in. x 2 1/2 to 6 in.

Estimate: \$ 200.00 - \$ 400.00



**Lot #8: MING-TYPE BRONZE GROUP OF THE BUDDHA ON A LION**

Crowned with raised right arm flanked by lotus stems, the beast growling with lowered head; 10 1/2 x 7 1/2 in.

Estimate: \$ 300.00 - \$ 400.00



**Lot #9: MING-TYPE BRONZE FIGURE OF THE BUDDHA SEATED ON A LION**

With diadem and disc earrings, left hand raised, incised saddle blanket, rectangular base, traces of red pigment; 9 1/2 x 7 1/4 x 3 3/4 in.

Estimate: \$ 100.00 - \$ 200.00



**Lot #10: CHINESE BRONZE FIGURE OF A POT-BELLIED YOUTH WITH BASKET AND A CHINOISERIE FIGURE**

8 and 5 in.

Estimate: \$ 100.00 - \$ 200.00

## Lots 11 - 20



**Lot #11: CHINESE BRONZE FIGURE OF AN IMMORTAL**

Seated on the back of a deer and holding a scroll in upraised right hand; 4 3/4 in., 4 1/2 in.

Estimate: \$ 150.00 - \$ 250.00



**Lot #12: BRONZE FIGURE OF A LONG-LEGGED BIRD CENSER**

The hollow body with hole at top, circular base, traces of gilding; 11 1/4 x 6 1/4 in., 5 in. diam.

Estimate: \$ 150.00 - \$ 250.00



**Lot #13: CHINESE RELIEF AND PART PAINTED BRONZE PANEL**

Depicting a warrior above waves confronting a scaly dragon, fretwork border; 20 x 34 1/2 in.

Estimate: \$ 200.00 - \$ 300.00



**Lot #14: CHINESE BRONZE STELE ON STAND**

Relief cast with 3 figures with halos against flaming pointed panel, lotus base and table stand; 9 1/4 x 4 1/2 x 2 5/8 in.

Estimate: \$ 200.00 - \$ 300.00



**Lot #15: CHINESE HUANG HUALI MINIATURE TABLE WITH INSET MARBLE PANEL**

The pierced fret frieze with dragon heads on s-scroll legs joined by Ox Bow stretchers; 4 3/4 x 15 x 7 1/2 in.

Estimate: \$ 200.00 - \$ 300.00



**Lot #16: CHINESE CARVED HARDWOOD TABLE CABINET**

Enclosed by 2 pairs of doors with dragon and cloud band panels within strapwork borders, losses; 23 1/2 x 16 x 6 3/4 in.

Estimate: \$ 250.00 - \$ 350.00



**Lot #17: PAIR OF CHINESE INCISED PEWTER TABLE LAMPS**

22 1/4 in.

Estimate: \$ 150.00 - \$ 250.00



**Lot #18: PAIR OF CHINESE BRASS CANDLESTICK LAMPS**

15 1/2 in.

Estimate: \$ 100.00 - \$ 200.00



**Lot #19: CHINESE BRASS-INLAID PEWTER TRAY AND CYLINDRICAL BOX**

Inlaid with a servant pushing a noble in a cart, encircled by cranes, the box with relief character lid; box: 3 1/2 in.

Estimate: \$ 100.00 - \$ 200.00



**Lot #20: CHINESE ARCHAISTIC CLOISONNÉ-INLAID BRONZE CENSER AND COVER**

The bowl with 3 bands dragons and lotus and centering winged lions, small dragon handle and elephant head handle, the cover in the form of a mythical beast; 17 3/4 x 16 x 7 in.

Estimate: \$ 400.00 - \$ 600.00

## Lots 21 - 30



**Lot #21: PAIR OF CHINESE RED LACQUER TABLE CANDLESTICKS**  
Each with flared stem and circular galleried base, figures, rockwork and trees.

Estimate: \$ 100.00 - \$ 200.00



**Lot #22: CHINESE CINNABAR LACQUER CIRCULAR BOX AND COVER**

3 in. tall, 15 1/2 in. diam.

Estimate: \$ 125.00 - \$ 225.00



**Lot #23: TWO CHINESE CARVED AND LACQUERED GROTESQUE FIGURES**

10 3/4 in. and 11 3/8 in.

Estimate: \$ 250.00 - \$ 350.00



**Lot #24: THREE POTTERY VESSELS**

Comprising an incised greyware stemmed bowl with stylized fret bands on chip ground, another stemmed bowl and a baluster vase with ochre and ivory; 8 1/2 to 10 3/4 in.

Estimate: \$ 300.00 - \$ 400.00



**Lot #25: SUNG-TYPE SLIPWARE DECORATED POTTERY JAR**

The baluster-form ochre-ground bowl with primary incised band, beneath 1/2 leaf tiles and birds at the shoulder; 16 in. tall, 12 in. diam.

Estimate: \$ 700.00 - \$ 1000.00



**Lot #26: SUNG-TYPE CRACKLE GLAZED VASE, MOUNTED AS A LAMP**

27 3/4 in.

Estimate: \$ 50.00 - \$ 75.00



**Lot #27: CHINESE BROWN-GLAZED AND RELIEF-MOLDED BOWL AND A SAKE DECANTER**

The interior with drip glaze, the exterior ivory glazed with winged dragons amidst vine-work, the rim with 8 notches, underglaze brown mark, together with an ovoid decanter; 2 1/2 in., 8 in. diam.

Estimate: \$ 150.00 - \$ 250.00



**Lot #28: CHINESE UMBER-GLAZED POTTERY STORAGE JAR**

The ovoid bowl with 4 applied lions' heads at the shoulder; 15 1/2 in. tall, 12 1/4 in. diam.

Estimate: \$ 300.00 - \$ 500.00



**Lot #29: CHINESE STRAW-GLAZED POTTERY STAFF AND A PIPE BOWL**

7 1/2 to 14 in. x 4 1/8 to 4 1/2 in.

Estimate: \$ 75.00 - \$ 125.00



**Lot #30: CHINESE POTTERY FIGURE OF A FEMALE MOURNER**

12 3/4 in.

Estimate: \$ 150.00 - \$ 200.00



## Lots 31 - 40



**Lot #31: CHINESE HALF-ROUND POTTERY FIGURE OF A DIGNITARY**

Standing face forward wearing down sloping cap and a coat over robes, traces of ivory and red pigmentation, fitted box; 23 x 5 5/8 in.  
Estimate: \$ 300.00 - \$ 500.00



**Lot #32: TWO CHINESE POTTERY TOMB FIGURES**

The smaller a part buff-glazed man in belted coat and trousers, the other a grey figure of a hooded lady wearing embroidered robes; 10 1/4 and 14 1/2 in.  
Estimate: \$ 250.00 - \$ 450.00



**Lot #33: MING-TYPE INCISED CELADON VASE WITH COPPER OVERLAY**

The bowl with scrolling chrysanthemum stems and the neck with sawtooth band; 14 3/4 x 9 1/2 in.  
Estimate: \$ 500.00 - \$ 700.00



**Lot #34: CHINESE CELADON-GLAZED POTTERY WALL POCKET**

7 1/8 x 5 1/2 x 2 5/8 in.  
Estimate: \$ 150.00 - \$ 250.00



**Lot #35: CHINESE GREEN-GLAZED POTTERY OCTAGONAL JAR, A TRIPOD CENSER AND A METAL CUP AND COVER**

The first with arched foliate panels, the censer relief-molded with quatrefoil florettes and s-scroll handles, the silvered cup with cover and footed dish, with incised foliate decoration; 3 3/4 in. to 4 3/4 in.  
Estimate: \$ 100.00 - \$ 200.00



**Lot #36: CHINESE FLAMBÉ GLAZED PORCELAIN VASE**

With beaker neck and spherical footed bowl, blue and wine red drip glaze; 12 3/4 in. tall, 8 1/2 in. diam.  
Estimate: \$ 400.00 - \$ 600.00



**Lot #37: CHINESE BLANC DE CHINE FIGURE OF A FOURTEEN-ARMED DEITY**

The crowned figure seated on tiered lotus base and the hands holding various attributes; 15 3/4 x 7 in.  
Estimate: \$ 300.00 - \$ 500.00



**Lot #38: FOUR CHINESE BLANC DE CHINE FIGURES**

Two modeled as Kwan Yin with scepter or emptying a flower-filled basket, one a priest holding fly whisk and the last a putai with raised arms; 8 1/4 to 14 in.  
Estimate: \$ 300.00 - \$ 500.00



**Lot #39: TWO CHINESE PORCELAIN VASES**

A famille rose figure and character decorated vase and a dark blue ground vase with turquoise cloud band, character rondel and foliate decoration; 13 and 13 1/2 in. tall.  
Estimate: \$ 200.00 - \$ 400.00





**Lot #40: CHINESE CARVED STONE RELIEF FRAGMENT**

With a lion above two 3/4-length figures, huang huali box frame; 7 1/2 x 5 1/2 in., frame: 8 3/4 x 7 in.

Estimate: \$ 150.00 - \$ 250.00

[To Top](#)



## Lots 41 - 50



**Lot #41: CHINESE RELIEF CARVED SOFT STONE NICHE GROUP**

Centered by the seated Buddha with 4 attendants and a hawk above wave base, the reverse with incised inscription; 10 x 9 x 4 in.

Estimate: \$ 250.00 - \$ 350.00



**Lot #42: CHINESE CARVED STONE FIGURE OF BUDDHA**

Seated on lotus base with hands palm up in lap, traces of blue and pink pigment.

Estimate: \$ 300.00 - \$ 400.00



**Lot #43: CHINESE CARVED STONE HEAD OF BUDDHA**

The bald high head with down cast eyes and elongated ear lobes, ebonized turned base.

Estimate: \$ 250.00 - \$ 350.00



**Lot #44: CHINESE CARVED BLACK STONE HEAD OF BUDDHA**

The parted hair with top knot and diadem centering a figure medallion, down cast eyes, elongated ear lobes, black marble extension and veined black marble base; 11 in.

Estimate: \$ 500.00 - \$ 700.00



**Lot #45: CHINESE CARVED STONE HEAD OF A PRIEST**

With down cast eyes and elongated ear lobes, on wood stand; 6 1/2 x 4 3/4 in.

Estimate: \$ 250.00 - \$ 350.00



**Lot #46: NORTHERN SONG-STYLE LANDSCAPE**

Pen and ink, with pine trees, figure on a bridge, rocky mountains and village, matted and framed; sight: 9 x 6 3/4 in. Provenance: Yamanaka & Co., NY.

Estimate: \$ 200.00 - \$ 300.00



**Lot #47: PAIR OF CHINESE COLORED PRINTS: INTERIOR SCENES**

The one showing ladies making a landscape scroll, the other with ladies playing instruments, matted and framed; sight: 11 1/2 x 17 1/2 in.

Estimate: \$ 150.00 - \$ 250.00



**Lot #48: THREE CHINESE SCROLL PAINTINGS ON SILK AND ONE ON PAPER**

Variously depicting a trial before a lord, a lady in carriage accompanied by mounted attendants and 2 landscapes: 27 1/2 x 16 1/2 in. to 34 1/4 x 14 1/4 in.

Estimate: \$ 300.00 - \$ 400.00



**Lot #49: FOUR CHINESE PAINTINGS ON SILK**

Variously showing horse training, 2 mounted figures rounding up horses, mounted lady and 2 male figures and enthroned lord in landscape with attendants and a tiger, giltwood frames; framed: 47 3/4 x 21 1/2 in.

Estimate: \$ 300.00 - \$ 400.00



**Lot #50: THREE TIBETAN GILT-METAL BUDDHAS AND A THAI BUDDHA**

The 3 on lotus bases variously holding a ritual dagger, raised left hand in mudra, or hands in lap, the Thai on tiered triangular base; 6 1/4 to 10 in. x 4 to 5 3/4 in.

Estimate: \$ 300.00 - \$ 400.00

## Lots 51 - 60



**Lot #51: TIBETAN-TYPE BRONZE FIGURE OF BUDDHA**

Seated on pierced lotus base with hand in lap, red incrustations; 13 x 8 1/4 x 7 in.

Estimate: \$ 200.00 - \$ 300.00



**Lot #52: TIBETAN JADE AND TURQUOISE-MOUNTED REPOUSSÉ BRASS BOX AND A LACQUER BOX**

2 3/4 x 8 1/2 in. and 4 1/8 x 10 in.

Estimate: \$ 125.00 - \$ 175.00



**Lot #53: TWO TIBETAN BRONZE RITUAL DAGGERS AND A FIGURE OF BUDDHA**

Each with 3 addorsed heads of dharmapala one with turquoise beads above a grip in the form of vijra and tripartite blade, the standing Buddha holding a jar, on lotus base; 6 in., length: 8 1/2 and 12 1/4 in.

Estimate: \$ 75.00 - \$ 125.00



**Lot #54: ASIAN INCISED BRONZE COFFER AND A SOUTHEAST ASIAN COFFER**

The first with canted lid incised with fish and birds, drop handle, above plain panels within lappet borders, the other with repoussé foo dog, crane and mask head appliques on copper clad wood ground; 9 1/2 x 8 1/4 and 6 1/8 x 9 in.

Estimate: \$ 200.00 - \$ 300.00



**Lot #55: SOUTHEAST ASIAN BRONZE WINGED GRIFFIN MOUNT AND A GILT-METAL WALL HOOK**

3 x 4 1/2 in. and 3 x 5 1/2 in.

Estimate: \$ 100.00 - \$ 200.00



**Lot #56: SOUTHEAST ASIAN GILT BRONZE LOTUS BASE**

In 2 parts, the tiered lotus bowl on incised stem and galleried hexagonal base; 9 5/8 x 11 1/2 x 7 1/4 in., bowl: 10 in. diam.

Estimate: \$ 200.00 - \$ 300.00



**Lot #57: TWO SOUTHEAST ASIAN BRONZE FIGURES OF BUDDHA AND AN INDIAN TEMPLE DANCER**

The one seated on a lion, the other holding lotus stem, traces of gilding, the dancer with raised right leg; 7 1/8 to 7 1/2 in.

Estimate: \$ 200.00 - \$ 400.00



**Lot #58: SOUTHEAST ASIAN BRONZE FIGURE OF A STANDING NUDE**

Standing straight up and facing forward with arms at sides entwined by vinework continuing in to the legs, ebonized wood base; 15 1/4 in.

Estimate: \$ 150.00 - \$ 250.00



**Lot #59: SOUTHEAST ASIAN FIGURE OF A FOUR-ARMED GOD**

Standing on his left arm which rests on the throat of a supine figure within flaming mandorla, oval lotus base; 13 x 10 3/4 x 3 3/4 in.

Estimate: \$ 250.00 - \$ 350.00



**Lot #60: CARVED STONE FIGURE GROUP: BUDDHA AND ATTENDANT**

The seated god holding a disc to his right shoulder, the attendant with long gown by a willow tree, base with 3 priests and inscription at sides and back; 12 x 8 1/4 x 4 1/8 in.

Estimate: \$ 300.00 - \$ 400.00

## Lots 61 - 70



**Lot #61: SOUTHEAST ASIAN CARVED WOOD FIGURE GROUP OF DANCERS**

Carved as a male wearing grotesque mask, carrying a female on his back, scrolling base; 26 x 8 x 6 1/2 in.  
Estimate: \$ 150.00 - \$ 250.00



**Lot #62: TWO CARVED AND PAINTED WOOD MASKS**

The one a garuda head with colorful tiered crown and fan-shape ears, the other a smiling prince with colored hair, mounted as a light shade on a silvered metal bowl; 15 x 14 in. and 8 x 7 1/2 in.  
Estimate: \$ 150.00 - \$ 250.00



**Lot #63: THAI DAMASCENE BOWL AND A MINIATURE GROUP**

The bowl engraved with lions and flames, the crown with steel-banded base and pierced with pear-form medallions; 3 7/8 in., 8 in. diam. and 1 3/8 in., 3 1/2 in. diam.  
Estimate: \$ 125.00 - \$ 175.00



**Lot #64: THAI ENAMELED PORCELAIN BOWL**

3 1/2 in. tall, 7 in. diam.  
Estimate: \$ 100.00 - \$ 200.00



**Lot #65: ASIAN BRONZE FIGURE OF A SEATED ASCETIC**

The emaciated bare-chested figure with curled hair and hands resting on knee, incised lotus base; 6 1/2 x 4 1/4 in.  
Estimate: \$ 150.00 - \$ 250.00





**Lot #66: ASIAN RELIEF-DECORATED BRONZE TRIPOD CUP AND AN OIL LAMP**

The cylindrical bowl with everted lip and vine work, the lamp with spindle, bell-form base, octagonal well and 2 arms; 3 7/8 and 7 7/8 in.  
Estimate: \$ 100.00 - \$ 200.00



**Lot #67: THREE ASIAN METAL FIGURES AND A GILT COMPOSITION BUDDHA**

The largest, a parvati with left hand in mudra, a Buddha seated against a mandorla, a Buddha with hand in lap and the smallest a silvered metal temple musician; 3 1/4 to 7 in. x 2 3/4 to 3 1/2 in.  
Estimate: \$ 125.00 - \$ 225.00



**Lot #68: POTTERY CYLINDER LINK NECKLACE AND A BRASS BRACELET**

18 1/2 in., 3 5/8 in. diam.  
Estimate: \$ 50.00 - \$ 100.00



**Lot #69: INDIAN SILVER REPOUSSÉ PANEL ON VELVET**

Frame: 13 3/4 x 11 1/2 in.  
Estimate: \$ 100.00 - \$ 200.00



**Lot #70: INDIAN BRONZE MOUNT**

3 1/4 x 4 3/4 x 1 in.  
Estimate: \$ 100.00 - \$ 200.00

## Lots 71 - 80



### **Lot #71: TWO INDIAN BRONZE FEMALE FIGURES AND A SOUTHEAST ASIAN BRONZE FIGURE OF BUDDHA**

The larger woman holding a lotus branch, the other with both arms raised, the seated Buddha with hands forming mudra; 10 3/4 x 3 3/4 in. to 17 1/4 x 8 3/4 in.

Estimate: \$ 300.00 - \$ 500.00



### **Lot #72: THREE INDIAN BRONZE FIGURES**

The largest a male with crown, sarong and anklets, the other dancers, one with raised left leg, the other a hermaphrodite; 14 1/2 to 20 3/4 in.

Estimate: \$ 400.00 - \$ 600.00



### **Lot #73: INDIAN BRONZE FIGURAL CANDLE HOLDER**

Modeled as a kneeling winged votive backed by a lotus stem with multiple hinged petals; 9 1/4 x 3 1/2 in.

Estimate: \$ 250.00 - \$ 350.00



### **Lot #74: FIVE INDIAN BRONZE FIGURES AND A CHINESE FIGURE OF PUTAI**

Comprising a group of 4-armed god and female attendant with turquoise coral dots, 2 seated males and one female and a standing male with ringed conical cap, putai with bare belly and holding beads; 5 1/2 to 11 3/4 x 3 3/4 to 8 in.

Estimate: \$ 300.00 - \$ 500.00



### **Lot #75: INDIAN BRONZE OIL LAMP, NOW ON MARBLE BASE**

With central bird pin surrounded by 6 hinged lids with bird head knops; 2 5/8 in., 4 in. diam.

Estimate: \$ 200.00 - \$ 300.00



**Lot #76: INDIAN CARVED IVORY FIGURE OF A DEITY AND A POTTERY LIDDED BOX**

5 1/2 in., 2 5/8 x 2 in.  
Estimate: \$ 125.00 - \$ 225.00



**Lot #77: INDIAN CARVED WOOD MODEL OF A TEMPLE**

With central removable dome and 2-tiered spires, above central open porch with figure with offering, flanked at the ends by storerooms; 13 3/4 x 13 3/4 x 5 1/4 in.  
Estimate: \$ 300.00 - \$ 400.00



**Lot #78: FOUR POTTERY ARTICLES**

Comprising 2 Indian graduated relief steles each centering the seated Buddha, a grey-glazed seated woman and a disc-form vial with pressed figure rondels; 3 1/2 to 4 1/2 in. x 2 to 3 1/2 in.  
Estimate: \$ 150.00 - \$ 250.00



**Lot #79: INDIAN CARVED RED SANDSTONE HEAD OF THE BUDDHA**

With down cast eyes, elongated ear lobes and tiered curled coif, wood stand; 6 x 3 7/8 in.  
Estimate: \$ 150.00 - \$ 250.00



**Lot #80: CARVED SOFT STONE RELIEF FRAGMENT**

3 1/2 x 4 1/4 in.  
Estimate: \$ 100.00 - \$ 200.00

## Lots 81 - 90



### **Lot #81: INDIAN CARVED STONE STELE**

Relief carved with a 4-armed crowned deity holding attributes on wood stand; 16 x 10 x 4 1/2 in.

Estimate: \$ 300.00 - \$ 500.00



### **Lot #82: TWO JAPANESE WOODBLOCK TRIPTYCHS**

The one after Utagawa showing woman and children on a beach, island and view of Mt. Fuji in distance, the other, after Toyokuni, with 3 ladies in a garden pavilion, framed; 14 1/4 x 29 1/2 in. and 13 3/4 x 29 3/4 in.

Estimate: \$ 150.00 - \$ 250.00



### **Lot #83: THREE JAPANESE WOODBLOCK PRINTS**

Comprising a springtime view of Mt. Fuji through prunus branches, figures on a rainy hillside with umbrellas and street scene, 2 framed, one matted; sight: 10 1/4 x 14 in. to 8 1/2 x 13 1/4 in.

Estimate: \$ 200.00 - \$ 300.00



### **Lot #84: GROUP OF FIVE JAPANESE WOODBLOCK PRINTS**

Each showing a single lady in a boat, preparing tea, holding stringed instrument, holding a calligraphic scroll or holding an umbrella, together with a reproduction of lady regarding bonsai in the snow; sight: 12 1/4 x 7 1/2 in. to 14 x 18 in.

Estimate: \$ 200.00 - \$ 300.00



**Lot #85: FIVE JAPANESE WOODBLOCK PRINTS**

Comprising a pair on textured paper of seated geisha and a kneeling geisha being punished, head of a woman, group of ladies by a pine tree and couple by a stream in autumn, 4 framed; sight: 9 1/4 x 4 3/4 to 14 3/4 x 9 1/2 in.

Estimate: \$ 250.00 - \$ 350.00



**Lot #86: JAPANESE PEN AND INK OF A CRANE AND EIGHT WOODBLOCK PRINTS**

Including 3 miniatures, a view of a garden pavilion, a scene from 100 ghost tales, after Hokusai, an evening street scene and 2 after Masanobu; the crane sheet: 6 x 7 1/2 in. and others from: 2 1/4 x 3 1/4 to 6 3/4 x 9 1/4 in.

Estimate: \$ 100.00 - \$ 200.00



**Lot #87: KANO SCHOOL ACCORDIAN FOLDER WITH TEN PEN AND INK LANDSCAPES AND A BOUND ALBUM**

The first with silk embroidered cover, enclosing the vertical landscapes, the album with 10 pages incorporating multiple badge studies, together with a framed woodblock and a reproduction of a horse.

Estimate: \$ 100.00 - \$ 200.00



**Lot #88: EIGHT JAPANESE MINIATURE LANDSCAPES**

Watercolors on silk, variously showing waterside views with huts, trees and mountains, 7 in glass panels; 4 3/8 x 2 3/4 in. (with minor variations).

Estimate: \$ 100.00 - \$ 200.00



**Lot #89: FOUR JAPANESE WATERCOLOR BIRD STUDIES AND A BIRD PRINT**

Depicting 2 song birds and 2 birds of prey, 4 separate pieces laid down, unframed, the other, a hand-colored engraving of a blue and yellow plumed bird, framed; overall sheet: 6 1/8 x 8 3/8 in., print frame: 9 3/4 x 8 in.

Estimate: \$ 100.00 - \$ 200.00



**Lot #90: JAPANESE PAINTING ON SILK**

Depicting 2 geisha, plain background, ivory lacquer frame; frame: 41 3/4 x 13 3/4 in.

Estimate: \$ 125.00 - \$ 175.00

[To Top](#)





## Lots 91 - 100



**Lot #91: JAPANESE PAINTED PAPER SIX-FOLD TABLE SCREEN**

Centered by a seated lady in a garden receiving gifts from female attendants, other groups of ladies at various pursuits, gold ground; overall: 19 1/4 x 4 ft. 9 in.

Estimate: \$ 150.00 - \$ 250.00



**Lot #92: JAPANESE HANIWA-TYPE TERRACOTTA HEAD**

The flat back head with pierced eyes and mouth, the ears with pendants, and wearing notched crescent hairpiece; 10 x 8 3/4 x 5 1/4 in.

Estimate: \$ 400.00 - \$ 600.00



**Lot #93: JAPANESE BROWN-GLAZED PORCELAIN BOWL AND SMALL RAKU CUP**

The first painted on the interiors with iris stem, underglaze blue mark, the other with tan pitted exterior and crystalline interior; 2 3/4 and 1 1/4 in., 6 1/4 and 2 5/8 in. diam.

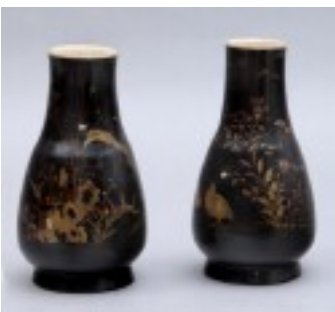
Estimate: \$ 200.00 - \$ 300.00



**Lot #94: FOUR GLAZED CERAMIC ARTICLES**

The largest, Japanese, of swelling block-form with brown blossom and molded teak mask handles, one ovoid with brown incised cross hatched leaves and 2 buff jars; 2 7/8 to 5 5/8 in. x 3 1/2 to 5 in.

Estimate: \$ 250.00 - \$ 350.00



**Lot #95: ASSEMBLED PAIR OF JAPANESE BROWN-LACQUER POTTERY PEAR-FORM FOOTED VASES**

The one with gilt quail and flowers, the other with rockwork and foliage, each signed; 9 in. tall, 5 in. diam.

Estimate: \$ 200.00 - \$ 300.00



**Lot #96: JAPANESE WHITE EARTHENWARE FACETED JAR**

With 4 shi shi panels highlighted in gold spaced by blue-ground triangles with floral strapwork rondels, base drilled; 5 1/8 x 6 in.

Estimate: \$ 200.00 - \$ 300.00



**Lot #97: TWO TABLE LAMPS**

A Japanese satsumaware ginger jar with bird and flower decorations and a baroque-style brass candlestick lamp; 21 and 24 in.

Estimate: \$ 100.00 - \$ 200.00



**Lot #98: JAPANESE BLACK PAINTED COMPOSITION RELIEF RONDEL AND A LACQUER MASK**

Mask: 7 3/4 in., rondel: 13 in.

Estimate: \$ 100.00 - \$ 200.00



**Lot #99: TWO CARVED WOOD MASKS**

Comprising a Japanese oval face with center-parted hair and a Japanese red-stained monkey mask with hinged lower jaw; 8 1/4 x 5 3/4 and 6 1/2 x 5 3/4 in.

Estimate: \$ 125.00 - \$ 225.00



**Lot #100: JAPANESE MUROMACHI-TYPE IRON POT AND A LATER TEAPOT**

3 1/2 to 4 3/4 in.

Estimate: \$ 200.00 - \$ 300.00

[To Top](#)

