

Lots 101 - 110



Lot #101: PAIR OF NEOCLASSICAL GILT-METAL MOUNTED PORPHYRY URNS

Each of campani-form with everted molded rim, with scroll handles rising from mask heads. 14 1/4 x 11 1/2 in.

Estimate: \$ 2500.00 - \$ 4500.00



Lot #102: ENGLISH BRASS- INLAID MAHOGANY DECANTER BOX

Opening to four cut-glass block-form decanters with diamond faceted panels and stoppers with four silver labels, gin, whiskey, scotch and brandy; Birmingham, 1895.

Estimate: \$ 400.00 - \$ 600.00



Lot #103: GEORGE III BRASS-MOUNTED MAHOGANY APOTHECARY CABINET

With label, "... R. Wootton Chymist [sic]" ; the fielded panel doors opening to an arrangement of drawers some fitted with bottles and two with sliding lids, flanked by drop carrying handles, the back with sliding panel opening to reveal other bottles, chest with long and short drawers.

Estimate: \$ 700.00 - \$ 900.00



Lot #104: TWO GEORGE III INLAID TEA CADDIES

The larger inlaid with cornucopia, repoussé brass ring drop handle and ivory key escutcheon, the other inlaid rosewood, opening to two lidded caddies.

Estimate: \$ 400.00 - \$ 600.00



Lot #105: GEORGE III PAINTED SATINWOOD GLOVE BOX

The hinged top with oval scene of figure on a road, vines and flowers, front with swags, the sides with flower-filled baskets; 3 3/4 x 12 x 5 in.

Estimate: \$ 600.00 - \$ 800.00



Lot #106: GEORGE III INLAID MAHOGANY TEA CADDY

The caddy with ring drop handle, opening to two lidded caddies and mixing bowl recess, together with an inlaid mahogany miniature chest.

Estimate: \$ 300.00 - \$ 500.00



Lot #107: ENGLISH WROUGHT IRON-MOUNTED WALNUT BOTTLE CARRIER

The slightly domed hinged lid with drop handle, opening in conjunction to hinged front to bottles, wrought iron key escutcheon and straps; locked, no key.

Estimate: \$ 200.00 - \$ 400.00



Lot #108: 9" CELESTIAL TABLE GLOBE

By Newton Son and Berrys, dated 1834, raised on a base with four turned legs; 14 x 14 in.

Estimate: \$ 800.00 - \$ 1200.00



Lot #109: 9" TERRESTRIAL TABLE GLOBE

By Newtons, dated 1834, raised on a turned mahogany base, feet extended; 14 x 14 in.

Estimate: \$ 1000.00 - \$ 1200.00



Lot #110: GERMAN TERRESTRIAL GLOBE, BY LUDWIG JULES HERMANN, BERLIN

The pivoting sphere on turned wood stem and dished base, 23 1/2 in. tall, 14 in. diam.

Estimate: \$ 500.00 - \$ 700.00

[To Top](#)



Lots 111 - 120



Lot #111: ENGLISH MAHOGANY BOTTLE CARRIER

With six divisions and brass handle, 4 x 12 3/4 x 15 3/4 in.

Estimate: \$ 200.00 - \$ 400.00



Lot #112: ANGLO-IRISH CUT-GLASS THISTLE-FORM URN

With diamond faceted bands, flared stem and circular foot; 9 5/8 in. tall.

Estimate: \$ 300.00 - \$ 500.00



Lot #113: PAIR OF SCOTTISH 19TH C. CUT-GLASS URNS AND COVERS

Each diamond faceted urn with thistle-engraved borders, circular stepped bases, bell-form covers.

Estimate: \$ 1000.00 - \$ 1500.00



Lot #114: PAIR OF ENGLISH CUT-GLASS WINE COASTERS, A DECANTER AND STOPPER AND A JAR

The pair with fluted sides, the balloon-shape decanter with cross-hatched panels and mushroom stopper, the jar with tiered fluting.

Estimate: \$ 400.00 - \$ 600.00



Lot #115: GROUP OF EIGHT AMETHYST AND EMERALD GREEN GLASS TABLE ARTICLES

Comprising three ribbed bowls and one with everted rim, stemmed compote, stemmed roll-over compote, a goblet and a bowl.

Estimate: \$ 400.00 - \$ 600.00



Lot #116: THREE DUTCH ENGRAVED BRASS TOBACCO BOXES

Estimate: \$ 200.00 - \$ 300.00



Lot #117: GERMAN BRASS ALMS DISH

With a repoussé scene of Adam and Eve within abraded inscription, the broad everted rim punched with bands of leaf tips and gothic letters.
Estimate: \$ 300.00 - \$ 500.00



Lot #118: PAIR OF GERMAN ENAMELED GLASS BOWLS WITH GOLD-WASH METAL LIDS AND HANDLES

Each pale green bowl with graduated tubular bands molded with losses, fluted neck and engraved scroll spout and hinged lid with pierced knop, 33 in. high.
Estimate: \$ 400.00 - \$ 600.00



Lot #119: ENGRAVED GLASS AMETHYST OVERLAY TABLE SERVICE

Engraved with a band of stags above fluting; comprising an 11 3/4 in. serving bowl, 8 - 5 3/8 in. bowls (one cracked) and 8 - 8 1/8 in. plates.
Estimate: \$ 300.00 - \$ 400.00



Lot #120: PAIR OF CONTINENTAL SILVER-MOUNTED ENGRAVED GLASS DECANTERS AND STOPPERS

Each floral engraved chamfered bowl with base repoussé with 18th c. figures, the necks with figure rings and stoppers modeled as putti with grapes and a cup, together with two Tiffany & Co. silver labels, "Scotch" and "Rye."
Estimate: \$ 300.00 - \$ 400.00

[To Top](#)



Lots 121 - 130



Lot #121: PAIR OF GERMAN AND SILVER-GILT AND ROCK CRYSTAL TABLE CANDLESTICKS

The segmented stems with lobed drip pans and hexagonal nozzles, the triangular bases chased with acanthus leaves, on dolphin feet; 12 5/8 in. tall.

Estimate: \$ 300.00 - \$ 400.00



Lot #122: SILVER-MOUNTED LEATHER BLACKJACK

Of baluster-form with engraved rim, unmarked. Sold Sotheby's, 4/11/77, lot #474.

Estimate: \$ 200.00 - \$ 300.00



Lot #123: SILVER-PLATED PLAQUE WITH TWO HORSE HEADS

Rectangular back plate with two relief-molded horse heads, right and left, signed indistinctly.

Estimate: \$ 200.00 - \$ 300.00



Lot #124: QUEEN ANNE OAK MINIATURE DRESSER

The rectangular 2-plank deep top above a cock-beaded drawer with brass ring drop handles and scalloped apron, on short angular legs; 12 1/2 x 22 x 14 in.

Estimate: \$ 600.00 - \$ 800.00



Lot #125: GEORGE III BRASS-MOUNTED SHAGREEN DECANTER BOX

The sloping serpentine fronted top opening to two mallet-form decanters and stoppers, the sides with brass drop handles; 14 x 9 1/4 x 9 in.

Estimate: \$ 400.00 - \$ 600.00



Lot #126: FRENCH ORMOLU FIGURE OF A GIRL

Hatted and with hand on hip and a brandy keg, block pedestal and c-scroll and foliate base; 13 3/4 x 4 5/8 x 4 5/8 in.

Estimate: \$ 300.00 - \$ 500.00



Lot #127: LARGE GROUP OF TABLE LINENS

Banquet cloths, tablecloths, place mats, napkins, doilies; many with embroidery and monogrammed; in damask, linen, lace, cut work or applique.

Estimate: \$ 1500.00 - \$ 2500.00



Lot #128: TWO NEEDLEWORK PILLOWS

One rectangular and one round, each worked with flower-filled baskets and sprays.

Estimate: \$ 600.00 - \$ 800.00



Lot #129: PAIR OF GILT-METAL HANDLED NEEDLEWORK FIRE FANS

Each ground worked with floral wreath centering initials "A. S.," fringed border; 15 x 7 1/2 in.

Estimate: \$ 300.00 - \$ 400.00



Lot #130: CAST STONE BUST OF A GENTLEMAN

Traces of white wash; 19 1/4 in. tall.

Estimate: \$ 150.00 - \$ 250.00

[To Top](#)



Lots 131 - 140



Lot #131: PAIR OF GLAZED TERRACOTTA FIGURES IN CHINESE DRESS

36 in. tall.

Estimate: \$ 1400.00 - \$ 1600.00



Lot #132: FEATHER COLLAGES

Feather collaged bird profiles with watercolor detail on paper; 16 x 11 3/4 in., 15 3/4 x 11 3/4 in. and 11 x 12 in. (image, sight).

Estimate: \$ 300.00 - \$ 500.00



Lot #133: STUMPWORK ORNITHOLOGICAL PANEL AND A NEEDLEWORK PICTURE

15 1/2 x 15 1/2 in. (framed) and 10 1/4 x 12 1/2 in. (framed).

Estimate: \$ 250.00 - \$ 350.00



Lot #134: PAIR OF ENGLISH ORNITHOLOGICAL PICTURES

Constructed of feathers and watercolor on paper, each depicting a bird profile with tiered feather plumage, on watercolor tree branch, ebonized reeded frame: 8 3/4 x 10 1/4 in.

Estimate: \$ 500.00 - \$ 800.00



Lot #135: ORNITHOLOGICAL DIORAMA

Incorporating three song birds and four game birds, painted back board, glazed front and sides; 34 x 34 x 10 in.

Estimate: \$ 500.00 - \$ 700.00



Lot #136: GROUP OF FOUR PAINTED PAPIER MACHE ARTICLES

Comprising a 10 in. tray with hound and cat, a pair of footed dishes and a fire fan with seated hound.

Estimate: \$ 250.00 - \$ 350.00



Lot #137: GROUP OF FIFTEEN AUSTRIAN AND OTHER COLD PAINTED BRONZE MINIATURE DOG FIGURES

Estimate: \$ 250.00 - \$ 350.00



Lot #138: GOLD PATINATED BRONZE OWL-FORM INKWELL AND TWO OTHER ARTICLES

Cast as three graduated owls perched on a silvered claw base, with green glass eyes, the largest with hinged head, porcelain liner, together with a standing brown bear and a bird on rim of bark trough.

Estimate: \$ 400.00 - \$ 600.00



Lot #139: THREE RENAISSANCE-STYLE LEADED GLASS PANELS

Each centered by rondel of a wolf with crane or crow, approx. 14 1/2 x 14 1/2 in.

Estimate: \$ 300.00 - \$ 500.00



Lot #140: GERMAN CARVED BOVINE GROUP

Naturalistically rendered on tiered base.

Estimate: \$ 500.00 - \$ 700.00

[To Top](#)



Lots 141 - 150



Lot #141: TWO GERMAN CARVED WOOD ANIMAL FIGURES

Comprising a wild boar on naturalistic base, inscribed G. Staehl., and a hound with glass inset eyes and whiskey barrel tied to collar, black painted highlights.

Estimate: \$ 250.00 - \$ 350.00



Lot #142: GROUP OF TWELVE COLD PAINTED BRONZE MINIATURE BIRDFIGURES

Comprising five song birds, five game birds, an owl and an emu.

Estimate: \$ 250.00 - \$ 450.00



Lot #143: PAIR OF CARVED WALNUT FOX AND HOUND CANDLESTICKS AND A GAME BIRD GROUP

Estimate: \$ 200.00 - \$ 300.00



Lot #144: CARVED WALNUT POUCH WITH HUNT TROPHY AND A WOOD CHAIN

Estimate: \$ 50.00 - \$ 75.00



Lot #145: VICTORIAN INLAID ROSEWOOD LIQUEUR DECANTER BOX

The double hinged top with fruitwood stringing, hinged sides with glass holder, bun feet; 10 1/2 x 11 1/2 x 8 1/2 in.

Estimate: \$ 200.00 - \$ 400.00



Lot #146: GROUP OF BRASS HEARTH EQUIPMENT

Comprising a pair of 20 3/4 in. andirons, a 4 ft. 2 in. fender with pierced rondels, a 13 in. trivet, three fire tools and stand, and a three-fold wire mesh screen.

Estimate: \$ 400.00 - \$ 600.00



Lot #147: PAINTED GLASS AND LEADED WINDOW

Two round painted reserves in the style of Brueghel, surrounded by strapwork; 1 ft. 4 1/2 in. x 4 ft. 1 1/2 in.

Estimate: \$ 400.00 - \$ 600.00



Lot #148: PAIR OF TURQUOISE-GLAZED POTTERY FROGS

Estimate: \$ 150.00 - \$ 250.00



Lot #149: LOUIS XVI-STYLE JARDINIERE STAND AND COVER

Porcelain and gilt-metal-mounted and ebonized; 37 1/2 x 12 1/4 in. diam.

Estimate: \$ 300.00 - \$ 500.00



Lot #150: CONTINENTAL ENAMEL-MOUNTED-GILT-METAL EGG CUP HOLDER

With ruby glass foliage, the liner with gilt star and crescent moon.

Estimate: \$ 100.00 - \$ 200.00

[To Top](#)



Lots 151 - 160



Lot #151: FRENCH ENAMEL AND BRASS OVOID BOX

3 3/8 in. long.

Estimate: \$ 100.00 - \$ 200.00



Lot #152: NEOCLASSICAL-STYLE GILT-METAL AND LAPIS LAZULI SMALL TABLE CLOCK

The 3 1/2 in. disc with velvet ground and tiered husk and berry surround, on two boys-on-dolphins supports, lapis base with petal tip band, bun feet; possibly by Caldwell.

Estimate: \$ 400.00 - \$ 600.00



Lot #153: SIX VICTORIAN TRANSFER-PRINTED POT LIDS

Three titled, "Peace," "The Rivals," or "The Cavalier," all with figural scenes, framed on velvet.

Estimate: \$ 200.00 - \$ 400.00

Lot #154: NO LOT



Lot #155: GROUP OF MILITARY HATS

Estimate: \$ 100.00 - \$ 200.00



Lot #156: PAIR OF TOLE PEINTE COVERED URNS

Approx. 12 in. tall.

Estimate: \$ 100.00 - \$ 150.00



Lot #157: BRASS LANTERN CLOCK

14 3/4 x 6 3/4 x 5 in.

Estimate: \$ 150.00 - \$ 250.00



Lot #158: PAIR OF NEOCLASSICAL-STYLE GILT-BRONZE-MOUNTED ROUGE ROYALE URNS

Of campani form, with reeded handles and band of classical figures, egg-and-dart rim and fluted stem, the base with lyre and wreath mounts, toupie feet; 21 in. to rims.

Estimate: \$ 1500.00 - \$ 2500.00



Lot #159: BRONZE MODEL OF THE WARWICH VASE

The squat bowl cast with eight classical heads flanking entwined viper handles, fluted circular base; 5 1/2 in. tall.

Estimate: \$ 250.00 - \$ 450.00



Lot #160: STAINED WOOD AND BAMBOO-CARVED MINIATURE CHEST OF FIVE DRAWERS

The top with applied "bamboo" edge above five drawers with "bamboo" dividers, the feet on gilt-metal thimble sabots, lacking knobs; 16 5/8 x 11 1/2 x 5 1/4 in.

Estimate: \$ 250.00 - \$ 450.00

[To Top](#)



Lots 161 - 170



Lot #161: ENGLISH SILVER-MOUNTED GLASS INKWELL WITH EIGHT-DAY WATCH

The block-form bowl with hinged monogrammed lid opening to eight-day watch.

Estimate: \$ 150.00 - \$ 250.00



Lot #162: ENAMEL-MOUNTED BRASS UMBRELLA-FORM WALL CLOCK

The Roman numeral plaques spaced by the umbrella staves, on scroll work ground; 9 3/4 in. diam.

Estimate: \$ 250.00 - \$ 450.00



Lot #163: ANSONIA CLOCK CO. INCISED BLACK ENAMELED METAL MANTLE CLOCK

The 5 1/2 in. brass dial within a flat-top architectural case with floral stem and red marbelized band; 10 1/4 x 16 1/4 in.

Estimate: \$ 100.00 - \$ 200.00



Lot #164: LOUIS XVI-STYLE BRONZE AND MARBLE FIGURAL CLOCK

The dial contained in a breakfront black and fleur de peche marble case, surmounted by the figure of a putto playing cymbals and flanked by grape clusters, 17 1/2 x 16 in.

Estimate: \$ 300.00 - \$ 500.00



Lot #165: FRENCH BRASS 11-JEWEL CARRIAGE CLOCK

Retailed by Duverdrey and Bloquel, the white enamel face with subsidiary 1-12 dial, beveled glass panels, 4 1/4 x 3 1/8 in.

Estimate: \$ 100.00 - \$ 200.00



Lot #166: NAPOLEAN III BOULLE LIQUEUR DECANTER BOX

The serpentine-fronted double-hinged top opening to gilt-metal tray fitted with four cut-glass decanters and stoppers and nine liqueurs, hinged sides; brass feet; 10 3/4 x 13 x 9 1/2 in.
Estimate: \$ 300.00 - \$ 500.00



Lot #167: SIX PIRANESI PRINTS

Engravings on paper, each sheet approx. 29 1/2 x 20 in., various size images, all stamped E. D. S. Library/ Peabody.
Estimate: \$ 800.00 - \$ 1200.00



Lot #168: DUTCH SCHOOL, SWORD PLAY

Six engravings with hand-coloring by various artists, 18 7/8 x 27 1/8 in. (image, sight).
Estimate: \$ 700.00 - \$ 900.00



Lot #169: SET OF SIX HAND-COLORED ENGRAVINGS OF THE "HARLOT'S PROGRESS"

Published by G. G. & J. Robinson, 1779, engraved by T. Cook, after William Hogarth, matted and framed.
Estimate: \$ 700.00 - \$ 900.00



Lot #170: MAP OF "BRITANNIA"

Engraving on paper with hand-coloring, 16 3/8 x 12 5/8 in. (sight)
Estimate: \$ 75.00 - \$ 125.00

[To Top](#)



Lots 171 - 180



Lot #171: FOUR PHOTOGRAPHS OF GRECIAN-STYLE BAS RELIEFS

Each 16 in. diam., double matted and in a 27 1/4 x 25 1/4 in. frame.

Estimate: \$ 300.00 - \$ 500.00



Lot #172: ENGLISH SCHOOL, "THE GOAT-SUCKER"

Engraving with hand-coloring, 9 7/8 x 13 3/4 in., (plate, sight), identified as "Caprimulgus/ The Goat Sucker."

Estimate: \$ 50.00 - \$ 75.00



Lot #173: PANEL DESIGNS

Seven two-piece framed panels, each 18 3/4 x 14 in.

Estimate: \$ 500.00 - \$ 700.00



Lot #174: SIX FRENCH SCENIC WALLPAPER PANELS

Each in a frame with curved top, the panels hinged and held rigid; 67 x 131 in.

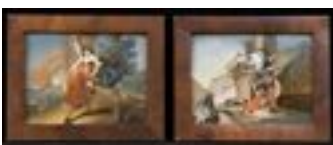
Estimate: \$ 700.00 - \$ 900.00



Lot #175: COLLECTION OF TWELVE SILK WOVEN STEVENGRAPHS

Some inscribed, "Woven in silk by Thomas Stevens, Inventor and Manufacturer, Coventry and London (registered)"; 6 x 8 3/4 in. and 7 1/2 x 11 1/2 in. (framed).

Estimate: \$ 400.00 - \$ 600.00



Lot #176: PAIR OF CONTINENTAL REVERSE PAINTINGS ON GLASS

Mythological scenes in mahogany frames, 10 x 12 1/4 in. each.

Estimate: \$ 300.00 - \$ 500.00



Lot #177: EUROPEAN SCHOOL, BOATS ON THE BEACH

Oil on white glass, 6 1/2 x 12 3/4 in. (images, sight), unsigned.

Estimate: \$ 300.00 - \$ 500.00



Lot #178: WILLIAM AND MARY OAK TWO-PART CHEST OF DRAWERS

The top with applied edge above two double-paneled drawers and the base also with two drawers with raised panels, double paneled sides; 42 1/2 x 39 x 22 1/2 in.

Estimate: \$ 1400.00 - \$ 1600.00

Lot #179: NO LOT



Lot #180: WILLIAM AND MARY OAK SLANT-FRONT BOX

The lid with wrought iron butterfly hinges and chip-carved side edges, opening to a shelf, the front with lock plate; 14 x 27 1/2 x 17 1/4 in.

Estimate: \$ 400.00 - \$ 600.00

[To Top](#)



Lots 181 - 190



Lot #181: WILLIAM AND MARY OAK SMALL BLANKET CHEST

The rectangular hinged top with chip-carved side edges and drop lock, the front with lock flanked by stile ends, 19 x 31 in.

Estimate: \$ 400.00 - \$ 600.00



Lot #182: QUEEN ANNE PUNCHWORK AND GESSOED GILTWOOD MIRROR

The shaped plate within molded frame with shaped crest relief carved with foliage; 37 1/2 x 26 1/4 in.

Estimate: \$ 1800.00 - \$ 2200.00



Lot #183: QUEEN ANNE WALNUT AND PARCEL GILT DRESSING MIRROR

The upright plate within shaped petal-tip inner border, the out-scroll base containing three drawers on ogee bracket feet; 27 1/2 x 19 1/2 in.

Estimate: \$ 600.00 - \$ 800.00



Lot #184: QUEEN ANNE WALNUT STOOL

The hand-worked needlework seat, of later date, on molded rails and cabriole legs with applied brackets, ending in pad feet; 17 x 21 x 16 in.

Provenance: Herbert Schiffer, Exton, PA.

Estimate: \$ 300.00 - \$ 500.00



Lot #185: ENGLISH OAK TAVERN TABLE

The circular overhanging top on triangular frieze and flared legs joined by a shelf; 29 in. high, 31 3/4 in. diam.

Estimate: \$ 200.00 - \$ 400.00



Lot #186: QUEEN ANNE OAK LOW BOY

The molded top above a three-drawer front with brass engraved drop handles, on cabriole legs ending in pointed pad feet; 27 1/2 x 30 x 19 1/4 in.
Estimate: \$ 500.00 - \$ 700.00



Lot #187: QUEEN ANNE WALNUT HIGHBOY

The cresting above a case fitted with two short and three long drawers, the base fitted with two short and one long drawer, each drawer fitted with bat wing handles; the whole raised on cabriole legs and pad feet.
Estimate: \$ 2000.00 - \$ 3000.00



Lot #188: GEORGE I WALNUT CHEST ON FRAME

The molded cornice above two short and three long drawers with brass bat's wing drop handles, the base with three drawers on foliate-carved cabriole legs ending in pad feet; 4 ft. 11 3/4 in. x 39 1/4 in. x 22 in.
Estimate: \$ 1500.00 - \$ 2500.00



Lot #189: DUTCH WALNUT JARDINIERE

19 x 12 in.
Estimate: \$ 400.00 - \$ 600.00



Lot #190: ASSEMBLED PAIR OF ENGLISH OAK WINDSOR SIDE CHAIRS

Each low back with pierced wheel splat and six spindles, the shaped seat on turned legs joined by h-stretcher.
Estimate: \$ 300.00 - \$ 500.00

[To Top](#)



Lots 191 - 200



Lot #191: GEORGE II-STYLE WALNUT CHEST ON CHEST

Molded cornice above a carcass fitted with two short and six long drawers with a writing slide, ending in bracket feet.

Estimate: \$ 700.00 - \$ 900.00



Lot #192: GEORGE II MAHOGANY TILT TOP TEA TABLE

The molded top on bird cage, column pedestal and tripod legs ending in club feet; 27 3/4 in. tall, 25 1/2 in. diam.

Estimate: \$ 500.00 - \$ 800.00



Lot #193: GEORGE II-STYLE MAHOGANY AND CARVED GILTWOOD MIRROR

With foliate incised bead and gadroon borders, the swan's neck crest with Prince-of-Wales plumes and leaf-enclosed oval, shaped apron; 5 ft. x 28 1/2 in.

Estimate: \$ 400.00 - \$ 600.00



Lot #194: GEORGE II CARVED MAHOGANY CONSOLE TABLE WITH MARBLE TOP

The fleur de peche marble paneled top above a frieze carved at the center by drapery swags and at the corners by oval paterae, on square tapered legs ending in brass box feet, top of later date; 31 in. x 4 ft. 9 in. x 31 1/8 in.

Estimate: \$ 5000.00 - \$ 7000.00



Lot #195: GEORGE III MAHOGANY INLAID PEMBROKE TABLE

The herringbone inlaid mahogany top above a frieze fitted with a drawer raised on paterae inlaid square tapering legs and ending in boxed casters; 29 1/4 x 19 1/4 x 32 in. Provenance: Stair & Co., New York.

Estimate: \$ 3000.00 - \$ 5000.00



Lot #196: GEORGE III MAHOGANY SMALL SIDEBOARD

The rectangular top above arched kneehole containing a cock-beaded drawer flanked by a door with ebonized stringing and brass ring-drop handles, the square tapered legs on spade feet; 34 5/8 x 42 1/4 x 17 7/8 in. Estimate: \$ 1000.00 - \$ 1500.00



Lot #197: GEORGE III CARVED MAHOGANY GAMES TABLE, CIRCA 1770

The serpentine fronted folding top opening to green baize-lined surface, on hipped cabriole legs carved with c-scrolls and pendant foliage, double gate rear legs, ending in scroll toes, 29 1/4 x 33 x 16 in.; Provenance: Tommy Devenish.

Estimate: \$ 5000.00 - \$ 7000.00



Lot #198: GEORGE II-STYLE CARVED, PAINTED AND PARCEL GILT MIRROR

The beveled plate within reeded surround, the swan's neck crest with egg-and-dart moldings and central shell bracket, above floral branches, shaped apron; 5 ft. 6 1/2 in. x 40 1/2 in.

Estimate: \$ 800.00 - \$ 1200.00



Lot #199: PAIR OF GEORGE III CARVED MAHOGANY SIDE CHAIRS

Each serpentine leaf-carved top rail above pierced beaker splat, the upholstered dipped seat on canted legs with rope twist outer corners, joined by h-stretcher; 37 1/2 x 21 1/2 in.

Estimate: \$ 2000.00 - \$ 3000.00



Lot #200: GEORGE III-STYLE BRASS-MOUNTED MAHOGANY PEAT PAIL

The cylindrical ringed bowl with two brass bands and swing handle, 17 in. tall.

Estimate: \$ 400.00 - \$ 600.00

[To Top](#)

