

Lots 1001 - 1010



Lot #1001: PAIR OF LOUIS XV CARVED BEECHWOOD FAUTEUILS EN CABRIOLET

Each cartouche shape padded back with floral crest, the serpentine seat on fan-carved cabriole legs; 33 1/4 x 23 1/2 in.

Estimate: \$ 1000.00 - \$ 1500.00



Lot #1002: LOUIS XV PROVINCIAL FRUITWOOD KNEEHOLE BUREAU PLAT

The three-plank top with chamfered corners, above two drawers with gilt-metal urn-cast pulls, with recessed paneled sides, raised on angular cabriole legs; 29 in. x 5 ft. 1 in. x 26 1/2 in.

Estimate: \$ 800.00 - \$ 1200.00

Lot #1003: NO LOT



Lot #1004: LOUIS XV CARVED AND PAINTED FAUTEUIL A LA REINE

The cartouche-shaped padded back with floral-carved crest, the padded arms on voluted supports, the serpentine seat on cabriole legs; 36 3/4 x 26 1/2 in.

Estimate: \$ 800.00 - \$ 1200.00



Lot #1005: LOUIS XV PROVINCIAL CARVED WALNUT SERPENTINE-FRONTED COMMODO

Containing three drawers each with three shaped reserves and applied with reeded keyhole escutcheons and drop handles, on angular cabriole legs; 35 x 47 x 2 1/2 in.

Estimate: \$ 1500.00 - \$ 3000.00



Lot #1006: PAIR OF LOUIS XV CARVED BEECHWOOD FAUTEUILS EN CABRIOLET

Each cartouche shape padded back with floral crest, the serpentine seat on fan-carved cabriole legs; 33 1/4 x 23 1/2 in.

Estimate: \$ 1000.00 - \$ 1500.00



Lot #1007: LOUIS XV PROVINCIAL CARVED WALNUT CANAPÉ À OREILLES

With serpentine back and shaped wings, the shallow seat on foliate-carved rail and cabriole legs, upholstered in rose velvet with embroidered borders; 37 3/4 x 35 1/2 in.

Estimate: \$ 1000.00 - \$ 1500.00



Lot #1008: FRENCH PROVINCIAL PINE CUPBOARD

With applied swan's neck crest, enclosed by a pair of doors each with 2 shaped glass panes, above an oblong panel, on scalloped plinth; 5 ft. 11 1/4 in. x 41 3/4 x 17 1/2 in.

Estimate: \$ 400.00 - \$ 800.00



Lot #1009: LOUIS XV PROVINCIAL WALNUT SERPENTINE-FRONTED COMMUNE

The molded top above three triple-paneled drawers fitted with brass drop handles and raised on cabriole legs, with fielded panel sides; 37 1/4 in. x 4 ft. 1/4 in. x 22 1/4 in.

Estimate: \$ 2000.00 - \$ 4000.00



Lot #1010: LOUIS XV-STYLE GILT CAST-IRON CHIMNEYPiece

The serpentine-fronted shelf with egg-and-dart edge, above a music trophy, the s-scroll supports surmounted by half-figures of maidens holding flowers in their skirts, foliate and heart inner surround; 39 in. x 5 ft. 1 in. x 10 1/2 in.

Estimate: \$ 1200.00 - \$ 1800.00

[Back](#)

[Back to Index](#)

[Next](#)

Lots 1011 - 1020



Lot #1011: FRENCH PROVINCIAL WALNUT BERGERE A LA REINE

The padded back with serpentine top rail and the arms on free-standing vase supports, the seat on flower-carved rail and raised on turned legs joined by stretchers, traces of paint; 37 x 26 in.

Estimate: \$ 300.00 - \$ 600.00



Lot #1012: LOUIS XVI-STYLE CARVED ONYX CHIMNEYPiece

The bowed breakfront shelf above stop-fluted frieze and corner rosettes, raised on fluted supports; 41 x 47 1/2 x 13 3/4 in.

Estimate: \$ 2000.00 - \$ 4000.00



Lot #1013: LOUIS XVI-STYLE GILT-METAL MOUNTED PORCELAIN THREE-LIGHT CHANDELIER

The ovoid cobalt-glazed bowl with pierced fluted rim, foliate base and pinecone pendant and supporting the foliate-layered c-scroll arms issuing from Bacchus heads supporting floral garlands, joined to ceiling plate by chains; bowl 12 x 12 3/4 in.

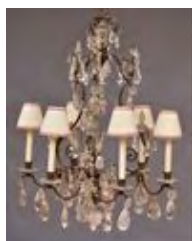
Estimate: \$ 600.00 - \$ 800.00



Lot #1014: LOUIS XV-STYLE CUT-GLASS AND GILT-METAL EIGHT-LIGHT CHANDELIER

The pear-form skeletal frame with s-scroll arms ending in waved drip pans spaced by baluster finials; 34 x 24 1/2 in.

Estimate: \$ 1000.00 - \$ 2000.00



Lot #1015: LOUIS XV-STYLE ROCK CRYSTAL-MOUNTED GILT BRONZE SIX-LIGHT CHANDELIER

The pear-form skeletal frame with faceted and tear drops clear and amethystine pendants and hexagonal drip pans; 23 x 36 in.

Estimate: \$ 2000.00 - \$ 4000.00



Lot #1016: PAIR OF LOUIS XVI VARIEGATED MARBLE AND GILT-BRONZE THREE-LIGHT CANDELABRA

Each black ringed urn stem with spiral twist handles, on stepped and beaded gray and mottled brown base, supporting the tulip-form candle arms; 17 1/4 x 10 1/2 in.

Estimate: \$ 800.00 - \$ 1200.00



Lot #1017: PAIR OF LOUIS XVI-STYLE PATINATED AND GILT-BRONZE FIGURAL TWO-LIGHT CANDELABRA

Each modeled as a dancing putto holding the branch-form arms, the one with tambourine and water urn, the other flanked by a bagpipe; 14 1/2 x 9 in. and 14 5/8 x 9 1/2 in.

Estimate: \$ 800.00 - \$ 1200.00



Lot #1018: PAIR OF RENAISSANCE-STYLE LEAD WALL LANTERNS

Each vertical back plate with bifurcated ends, and the bar supporting pendant light with pyramidal roof and glass-paneled box; 28 x 8 1/2 x 21 in.

Estimate: \$ 500.00 - \$ 700.00



Lot #1019: CONTINENTAL BAROQUE-STYLE FIVE-LIGHT CHANDELIER

The turned stem with urn from which rise the s-scroll arms, ending in cylindrical nozzles and pans; 19 x 26 1/4 in.

Estimate: \$ 700.00 - \$ 900.00



Lot #1020: LOUIS XVI PROVINCIAL WALNUT COMMODE

The molded top with chamfered corners, above three triple-paneled drawers with brass angular drop handles, the stop-fluted corners continuing to tapered legs; the sides with fluted panels; 35 x 46 x 27 1/4 in.

Estimate: \$ 3000.00 - \$ 5000.00

[Back](#)

[Back to Index](#)

[Next](#)

Lots 1021 - 1030



Lot #1021: SET OF TEN LOUIS XVI-STYLE CARVED, PAINTED AND PARCEL-GILT FAUTEUILS EN CABRIOLET

Each oval padded back flanked by padded arms with reeded and rosette terminals, the serpentine-fronted fluted rail on angular tapered legs carved with pendant husks; 37 1/2 x 23 in.

Estimate: \$ 2000.00 - \$ 4000.00



Lot #1022: LOUIS XVI-STYLE MAHOGANY SEMAINIER

The mottled marble top above a case fitted with seven drawers, raised on turned feet; 4 ft. 8 in. x 32 x 16 in.

Estimate: \$ 1000.00 - \$ 2000.00



Lot #1023: LOUIS XVI TULIPWOOD, ROSEWOOD, KINGWOOD AND MARQUETRY SECRÉTAIRE À ABATTANT

The white marble top with chamfered corners, above a flute-inlaid frieze drawer, the fall front panel with oval music trophy on quarter-veneered ground, the base enclosed by a pair of doors with gilt-metal bow and husk escutcheons, tapered legs; 4 ft. 9 1/2 in. x 35 x 15 1/2 in.

Estimate: \$ 1500.00 - \$ 3000.00



Lot #1024: LOUIS XVI GILTWOOD PIER MIRROR

The crest with basket of flowers surmounted by c-scrolls and foliage above a two-part mirror plate surmounted by a giltwood frame; 5 ft. 4 in. x 35 1/2 in.

Estimate: \$ 1200.00 - \$ 1800.00



Lot #1025: LOUIS XVI CARVED GILTWOOD BAROMETER

Signed Salon Coricelli, the frame carved with acorn-laden oak leaves, beading and petal tip, surmounted by a bow-knotted foliate crest, husk swag base; 34 1/2 x 18 1/2 in.

Estimate: \$ 800.00 - \$ 1200.00



Lot #1026: LOUIS XVI PROVINCIAL CARVED, PAINTED AND PARCEL- GILT TRUMEAU MIRROR

With beaded bands, the plate surmounted by an oil on canvas garden view of a youth with flute, girl and sheep, on gray/blue ground; 4 ft. 1/4 in. x 29 3/4 in.
Estimate: \$ 1200.00 - \$ 1800.00



Lot #1027: LOUIS XVI BOIS SATINÉ AND MARQUETRY COMMODOE

Stamped Crepi; with veined marble top with outset corners, the case with three frieze drawers with flute inlay and bead-cast ring drop handles, above two drawers sans traverse with florettes at corners, raised on square, tapered legs surmounted by paterae and ending in box sabots; 35 in. x 4 ft. 3 1/2 in. x 24 1/4 in. Note: Marble top is broken in half.
Estimate: \$ 4000.00 - \$ 8000.00



Lot #1028: PAIR OF LOUIS XVI-STYLE CARVED AND WHITE-PAINTED CHAISES WITH CHINESE BLACK LACQUER PANELS

Each back panel with two birds, butterflies, rockwork and flowers within fluted frame, the seat rail with paterae-carved chamfered corners, on stop-fluted legs; 34 1/2 x 16 3/4 in.
Estimate: \$ 600.00 - \$ 800.00



Lot #1029: LOUIS XVI GILT-METAL MOUNTED TULIPWOOD AND MARQUETRY ENCOIGNURE

The later mottled marble top above a quarter-veneered door flanked by fluted corners and fluted capitals and foliate bases, on square, tapered legs; 32 x 23 3/4 x 12 1/2 in.
Estimate: \$ 500.00 - \$ 700.00



Lot #1030: LOUIS XVI-STYLE CARVED, PAINTED AND PARCEL-GILT BERGÈRE À OREILLES

The padded back and armrests within guilloche borders, the bowed seat with ribbon-twist rail, raised on spiral fluted legs surmounted by paterae; 42 x 26 in.
Estimate: \$ 800.00 - \$ 1200.00

[Back](#)

[Back to Index](#)

[Next](#)

Lots 1031 - 1040



Lot #1031: PAIR OF LOUIS XVI-STYLE OVAL LEAD RELIEF GARDEN PLAQUES

The one with four putti with baskets of fruit, the other with four cherubs flanking a bird cage; 23 1/2 x 19 1/2 in.

Estimate: \$ 1000.00 - \$ 1500.00



Lot #1032: PAIR OF LOUIS XVI-STYLE CARVED AND GRAY-PAINTED CHAISES

Each bowed top rail above pierced foliate splat and the cane seat above entrelac rails and stop-fluted legs; 35 1/2 x 16 in.

Estimate: \$ 500.00 - \$ 700.00



Lot #1033: EMPIRE PAINTED AND PARCEL-GILT, BRONZE AND MARBLE CONSOLE TABLE

The d-shape white marble top above a pierced, painted and gilded wood frieze, supported by a bronze caryatid and raised on small marble plinth; 33 1/2 x 23 1/2 x 12 in.

Estimate: \$ 800.00 - \$ 1200.00



Lot #1034: EMPIRE-STYLE FIFTEEN-LIGHT CHANDELIER

The reeded prism-hung annulus supporting 10 s-scroll arms and enclosing five c-scroll arms, joined to median and anthemion-crested ceiling; 4 ft. 3 in. x 35 in.

Estimate: \$ 2000.00 - \$ 3000.00



Lot #1035: BAROQUE-STYLE WROUGHT-IRON MOUNTED CARVED GILTWOOD TRESTLE TABLE WITH SHELL-INLAID TOP

The rectangular top with shell mosaic inlay, and the shaped trestles carved with bell flowers, strapwork and guilloche and fitted with s-scroll stretchers; 28 3/4 x 9 ft. 11 in. x 46 in.

Estimate: \$ 2000.00 - \$ 4000.00



Lot #1036: BAROQUE-STYLE CARVED WALNUT ARMCHAIR

With velvet padded back and seat, flanked by foliate-capped s-scroll arms, on spiral twist and block legs joined by h-stretcher; 42 1/2 x 26 1/2 in.

Estimate: \$ 600.00 - \$ 800.00



Lot #1037: BAROQUE CARVED WALNUT SETTEE

The high serpentine back with shaped wings continuing to the armrests, the upholstered seat raised on turned and block legs; 45 x 6 ft. 4 in.

Estimate: \$ 1200.00 - \$ 1800.00



Lot #1038: ITALIAN BAROQUE CARVED WALNUT CREDENZA

The upper part containing four drawers with lock escutcheons or brass pulls, flanked by caryatids, Ionic capitals and guilloche columns, the base with hinged lid; 36 x 30 x 22 3/4 in.

Estimate: \$ 800.00 - \$ 1000.00



Lot #1039: PAIR OF RENAISSANCE-STYLE BRASS ANDIRONS

Each flambeau with tiered and pierced spheres fitted with lion-headed floral garlands, on tripod bases fitted with cherub heads, joined by a pierced fender with armorial center and fleur de lys ends; 27 x 11 x 7 3/4 in.

Estimate: \$ 700.00 - \$ 900.00



Lot #1040: ITALIAN BAROQUE WALNUT TRESTLE TABLE

The top with applied egg-and-dart edge, above two drawers with applied moldings and wood pulls, spaced by squares with knobs, the urn-form supports joined by a stretcher with rosettes; 32 1/4 x 6 ft. 11 in. x 34 in.

Estimate: \$ 3000.00 - \$ 5000.00

[Back](#)

[Back to Index](#)

[Next](#)

Lots 1041 - 1050



Lot #1041: ITALIAN BAROQUE WALNUT SIDE CABINET

With rectangular top, the three frieze drawers with raised panels and brass pulls, above two doors also with raised panels and brass pulls, on shaped feet; 39 3/4 in. x 6 ft. 3 1/2 in. x 27 1/2 in.

Estimate: \$ 2000.00 - \$ 3000.00



Lot #1042: ITALIAN BAROQUE TRESTLE TABLE WITH BOWED ENDS

The overhanging top raised on two assembled vase-form supports with s-scroll ends; 31 in. x 8 ft. 11 in. x 30 in.

Estimate: \$ 2000.00 - \$ 4000.00



Lot #1043: ITALIAN BAROQUE WALNUT OCTAGONAL-TOP TABLE

The top with deep fluted edge and the frame on vase-turned legs joined by a stretcher and raised on turned feet; 29 3/4 x 45 in.

Estimate: \$ 2000.00 - \$ 4000.00



Lot #1044: BAROQUE CARVED OAK BENCH

The low backrest relief-carved with two profile rondels of Roman centurions, flanked by rearing lions, flowers and vine work, the plank seat on trestle supports joined by wrought-iron spiral-twist stretchers; 26 1/2 x 7 ft. 4 in.

Estimate: \$ 1200.00 - \$ 1800.00



Lot #1045: ITALIAN CARVED WALNUT CREDENZA

The rectangular top with thumb-molded edge, above a case fitted with two lion-mounted secret drawers, flanking a central drawer, above a door and a base mounted drawer, raised on elongated bracket feet; 35 1/2 x 29 1/2 x 14 3/4 in.

Estimate: \$ 2000.00 - \$ 4000.00



Lot #1046: SMALL ITALIAN WALNUT CREDENZA

The molded top above a case fitted with two drawers over two cupboard doors flanked by engaged columns, raised on carved front feet; 35 1/2 x 34 x 14 3/4 in.

Estimate: \$ 1500.00 - \$ 300.00



Lot #1047: ITALIAN WALNUT SMALL CREDENZA

The rectangular top above a dentil-molded frieze, above a pair of cupboard doors, raised on elongated bracket feet; 31 1/2 x 33 x 16 in.

Estimate: \$ 1200.00 - \$ 1800.00



Lot #1048: ITALIAN BAROQUE WALNUT CENTER TABLE

The two-plank top with applied egg-and-dart edge, above three drawers with brass pulls, the reverse fitted en suite, raised on block legs joined by box stretchers; 31 3/4 x 7 ft. 5 1/4 x 37 3/4 in.

Estimate: \$ 2500.00 - \$ 5000.00



Lot #1049: ITALIAN BAROQUE PUNCHWORK TUB-BACK ARMCHAIR

The curved top rail with flowers and vinework at the front and strapwork at the reverse, the d-shape seat with tulip stem and foliage, on splayed legs; 26 1/2 x 22 1/2 in.

Estimate: \$ 250.00 - \$ 450.00



Lot #1050: BIEDERMEIER-STYLE BURLWOOD TWO-PART SEMAINIER

The coved flat-domed top above seven drawers with diamond-inlaid keyhole escutcheons, raised on bracket feet; 5 ft. 6 1/2 in. x 37 3/4 x 20 3/4 in.

Estimate: \$ 1000.00 - \$ 1500.00

[Back](#)

[Back to Index](#)

[Next](#)

Lots 1051 - 1060



Lot #1051: BIEDERMEIER MAHOGANY AND PARCEL-GILT CHEST ON CHEST

The upper part with raised d-shape top above an arrangement of two drawers and a fall front, flanked by gilt scroll brackets and ball finials, the base containing two drawers, the interior and backs refashioned; 5 ft. 2 1/2 in. x 42 1/2 x 21 1/2 in.
Estimate: \$ 1500.00 - \$ 2500.00



Lot #1052: PAIR OF CONTINENTAL NEOCLASSICAL MAHOGANY ARMCHAIRS

Each with solid backs and inlaid with classical figures; 32 x 21 x 17 in.
Estimate: \$ 1000.00 - \$ 2000.00



Lot #1053: BIEDERMEIER WALNUT SETTEE

Inlaid with ebony and boxwood front; 38 1/2 x 63 x 23 1/2 in.
Estimate: \$ 1200.00 - \$ 1800.00



Lot #1054: DUTCH ROCOCO-STYLE MARQUETRY-INLAID BOOKCASE CHEST OF DRAWERS

The serpentine cornice with foliate crest above a pair of nine-pane glazed doors, the Bombé lower part containing three drawers fitted with urn and garland handles and inlaid with floral vines, on scroll feet; 7 ft. 2 1/2 in. x 4 ft. 11 1/2 in. x 12 1/2 in.
Estimate: \$ 2000.00 - \$ 4000.00



Lot #1055: BAROQUE-STYLE ENAMELED MIRROR

The oblong octagonal and beveled main plate within black-ground border with enameled anthemion and scrolls, spaced by dotted and thumb press strips, surmounted by scrollwork crest; 41 x 28 3/4 in.
Estimate: \$ 1000.00 - \$ 1500.00



Lot #1056: CONTINENTAL BAROQUE-STYLE COLORED GLASS MIRROR

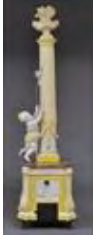
The "antiqued" cartouche-shaped plate within narrow beveled border and a pierced frame composed of amber and blue mirrored pieces, surmounted by bird and foliate crest; 35 x 26 in.
Estimate: \$ 500.00 - \$ 700.00



Lot #1057: PAIR OF EBONIZED AND PARCEL GILTWOOD FIVE-FOLD SCREENS

Each arched fabric-mounted fold within ebonized frame with gilt groove; each fold 5 ft. 6 in. x 18 in. Provenance: Property of a Lady.

Estimate: \$ 400.00 - \$ 800.00



Lot #1058: CONTINENTAL NEOCLASSICAL-STYLE CRACKLE-GLAZED FAIENCE STOVE

The fluted shaft with flambeau urn and the husk-hung base with a child holding two wood rods attached to a bird, yellow highlights; 6 ft. 3 in. x 18 x 10 1/2 in.

Estimate: \$ 1200.00 - \$ 1800.00



Lot #1059: AN ASSEMBLED SET OF FIVE ITALIAN WALNUT SIDE CHAIRS

Each with dipped top rail, spoon-shape uprights and solid baluster splat, the bow-fronted drop-in seat on cabriole legs ending in pad feet; 44 1/2 x 22 in.

Estimate: \$ 1000.00 - \$ 1500.00



Lot #1060: DUTCH LATE BAROQUE-STYLE MARQUETRY-INLAID WALNUT MIRROR

The plate within floral-stem border, surmounted by a shaped crest with flower-filled urn and banding; 32 x 20 1/4 in.

Estimate: \$ 800.00 - \$ 1200.00

[Back](#)

[Back to Index](#)

[Next](#)

Lots 1061 - 1070



Lot #1061: ITALIAN ROCOCO CARVED GILTWOOD SMALL MIRROR

The cartouche-shape plate within frame carved with shellwork and tiered acanthus foliage; 30 1/4 x 19 3/4 in.

Estimate: \$ 600.00 - \$ 800.00



Lot #1062: ITALIAN ROCOCO WALNUT WRITING TABLE

The well figured rectangular top above a frieze fitted with five drawers, raised on cabriole legs ending in hoofed feet; 29 in. x 4 ft. 3 1/2 in. x 26 1/4 in.

Provenance: From the Collection of Mrs. Frederick C. Drexler.

Estimate: \$ 1200.00 - \$ 1800.00



Lot #1063: ITALIAN ROCOCO WOOD-GRAINED SIDE TABLE

Containing a quarter-veneered drawer and raised on angular cabriole legs, lacking top; 27 3/4 x 21 x 16 1/4 in.

Estimate: \$ 600.00 - \$ 800.00



Lot #1064: ESPARTA MEDALLION CARPET

The rose medallion anchored to blue ground with ivory main and two guard borders; 9 ft. 11 in. x 8 ft. 1 in.

Estimate: \$ 50.00 - \$ 75.00



Lot #1065: CAUCASIAN RUG

The cobalt field with ivory and brick medallions, within ivory serrated leaf and two carnation guard borders; 5 ft. 3 in. x 4 ft. 6 in.

Estimate: \$ 500.00 - \$ 700.00



Lot #1065A: SENNA RUG

4 ft. 6 in. x 6 ft. 5 in.

Estimate: \$ 200.00 - \$ 400.00



Lot #1066: SHIRVAN RUG

Worked with four red and ivory stepped medallions on blue ground within primary ivory serrated leaf and two carnation sky blue borders; 5 ft. 9 in. x 3 ft. 1 1/2 in.

Estimate: \$ 400.00 - \$ 600.00



Lot #1067: GEORGE'S CROSS SHIRVAN

Worked with three crosses on cobalt octagons and ivory field, primary red and two guard borders; 5 ft. 2 in. x 4 ft. 2 in.

Estimate: \$ 400.00 - \$ 600.00



Lot #1068: DAGASTAN PRAYER RUG

The ivory field with rose, blue and tan latticework, within rose primary and four guard borders; 56 x 34 in.

Estimate: \$ 250.00 - \$ 500.00



Lot #1069: CAUCASIAN RUG

Worked with zig-zag-enclosed hexagons on a cobalt ground, within ivory and blue borders; 8 ft. 6 in. x 3 ft. 9 in.

Estimate: \$ 500.00 - \$ 700.00



Lot #1070: CAUCASIAN RUG

Worked with two rows of blue and saffron octagons, ivory primary and guard borders; 42 1/2 in. x 54 in.

Estimate: \$ 250.00 - \$ 500.00

[Back](#)

[Back to Index](#)

[Next](#)

Lots 1071 - 1080



Lot #1071: PORTUGUESE NEEDLEWORK CARPET

Approx. 25 ft. 11 in. x 13 ft. 11 in. Provenance: Property from the collection of Mr. Gordon Getty.

Estimate: \$ 800.00 - \$ 1200.00



Lot #1072: USHAK CARPET, EARLY 20TH C.

Worked with rose and saffron trellis on ivory ground; 9 ft. 7 in. x 19 ft. 2 in.

Estimate: \$ 1000.00 - \$ 2000.00



Lot #1073: NORTHEAST PERSIAN RUG

The wine red field worked with pinecones within cobalt primary and six guard borders; 6 ft. 1/2 in. x 4 ft. 4 in.

Estimate: \$ 250.00 - \$ 450.00



**Lot #1074: FLEMISH 17TH C. TAPESTRY BORDER FRAGMENT:
"FORTUTUDO"**

Worked with an allegorical figure standing in a bower, surmounted by fruit and flanked by entrelac borders; 18 1/2 X 43 1/2 in.

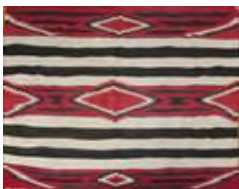
Estimate: \$ 1000.00 - \$ 2000.00



Lot #1075: FLEMISH VERDURE TAPESTRY

Worked with a woodland glade centering a view of a village, with mountains behind, within flowerhead and scrollwork border on chocolate brown ground, areas of reweaving; approx. 8 ft. 8 in. x 9 ft. 3 in.

Estimate: \$ 2000.00 - \$ 4000.00



Lot #1075A: NAVAJO WOOL RUG

5 ft. 4 in. x 6 ft. 3 1/2 in.

Estimate: \$ 1000.00 - \$ 3000.00



Lot #1076: PIECED COTTON AMERICAN FLAG

1861-1863; Worked with 34 stars, framed; 38 1/2 x 4 ft. 7 in. Provenance: Donated in 1903 by Miss Mary Bristol to the daughters of the American Revolution, Oliver Ellsworth Homestead.
Estimate: \$ 700.00 - \$ 900.00



Lot #1077: VICTORIAN WOOLWORK PICTURE

Worked with a three-masted ship off coast with light house, in walnut and parcel-gilt frame, 1870 news sheet on reverse; frame 17 3/4 x 22 in.
Estimate: \$ 300.00 - \$ 600.00



Lot #1078: CAUCASIAN RUG

The pea green field worked with ivory and wine red medallions, within saffron primary and two ivory and wine red guard borders; approx. 4 ft. 2 in. x 7 ft. 4 in.
Estimate: \$ 800.00 - \$ 1200.00



Lot #1079: TABRIZ CARPET

The ivory medallion within sixteen palmette surround and with two mosque lamps, on vinework cobalt ground, within four borders; 11 x 19 ft.
Estimate: \$ 2000.00 - \$ 3000.00

END OF AUCTION

[Back](#)

[Back to Index](#)