

Lots 701 - 710



Lot #701: ATTRIBUTED TO PEDRO ROLDAN, THE ELDER: "SUSANNAH AND THE ELDERS"

Terracotta relief with garden view of two men removing the covering of the recumbent Susannah, flanked by a fountain and a palm tree; 15 1/2 x 21 1/2 in. Provenance: The Fresno Metropolitan Museum of Art and Science, Fresno, CA.

Estimate: \$ 1000.00 - \$ 1500.00



Lot #702: CONTINENTAL CARVED, PAINTED AND PARCEL-GILT FIGURE OF THE VIRGIN QUEEN OF HEAVEN

With flat back, facing forward holding a book, wearing a gilt crown, necklace and rose cloak draped over embroidered robe; 26 1/4 x 6 1/2 x 4 5/8 in.

Estimate: \$ 1000.00 - \$ 3000.00



Lot #703: SOUTH GERMAN CARVED, PAINTED AND GILTWOOD FIGURE OF ST. CATHERINE

10 x 4 in. Provenance: Oscar Bondy, Wien; Blunka Gallery, NY.

Estimate: \$ 1000.00 - \$ 1500.00



Lot #704: CONTINENTAL CARVED, PAINTED AND PARCEL-GILT GROUP OF THE MADONNA AND CHILD

9 1/2 x 5 1/4 in.

Estimate: \$ 400.00 - \$ 800.00



Lot #705: GERMAN TERRACOTTA MODEL OF A PUG AND A CAST METAL FIGURE OF POODLE

5 ft. x 4 1/2 in.

Estimate: \$ 100.00 - \$ 200.00



**Lot #706: JOSE CARDONA (1878-1923):
"GAVROCHE"**

Bronze, signed lower right "JP Cardona," depicting a youth smoking a cigarette and carrying papers; 14 1/2 x 5 3/4 in.
Estimate: \$ 1000.00 - \$ 2000.00



**Lot #707: AFTER ANNA HYATT HUNTINGTON
(1876-1973): QUEEN ISABELLA**

Bronze, height: 49 1/4 in., signed and dated 1961.
Estimate: \$ 2000.00 - \$ 4000.00



**Lot #708: BAROQUE CARVED NICHE BUST OF A
BLACKAMOOR**

The head gazing to left with open mouth, scarf-draped shoulders, waisted pedestal; 29 x 22 1/2 in.
Estimate: \$ 1000.00 - \$ 1500.00



**Lot #709: PAIR OF LOUIS XVI-STYLE
TERRACOTTA BUSTS, AFTER LEMOYNE**

Modeled as a boy with collared shirt or a girl, each on gray St. Anne marble socle, encircled by a chained plaque; 12 3/8 and 12 5/8 in.
Estimate: \$ 700.00 - \$ 900.00



**Lot #710: LOUIS XVI-STYLE TERRACOTTA
FIGURE, AFTER RENE ROD**

With incised signature; modeled as a Bacchic putto seated and holding a grape cluster over a tazza, fitted on a giltwood base with leaf tip band; 16 1/4 x 14 1/2 x 10 1/2 in.
Estimate: \$ 600.00 - \$ 800.00

Lots 711 - 720



**Lot #711: CARVED MARBLE RELIEF PROFILE OF
GEORGE WASHINGTON BY F. BAGNASCO, 1889**

Signed under shoulder and inscribed, "George M.
Williams" and "G.P.T. Co. 1888"

Estimate: \$ 1000.00 - \$ 2000.00



**Lot #712: STANDING FIGURE OF GEORGE
WASHINGTON**

Mixed metal, standing square, holding document with hand
on pedestal; 22 1/2 x 8 1/2 x 5 1/2 in.

Estimate: \$ 500.00 - \$ 700.00



**Lot #713: GEORGE III MARQUETRY-INLAID
MAHOGANY TEA CADDY**

Of pointed oval cross section, the hinged lid with conch
shell medallion, the case with six-pointed star and acorn
and oak leaf medallion at the front and dot, diamond points
and blind ovals on reverse; 4 1/4 x 5 3/4 in.

Estimate: \$ 300.00 - \$ 600.00



**Lot #714: REGENCY TORTOISESHELL
SARCOPHAGUS-FORM TEA CADDY**

The flattened dome hinged lid with silver-plated tablet,
opening to two lidded wells, the case with shaped
escutcheon and three-quarter round pilasters, the flared base
on wood ball feet; 6 x 7 1/4 in.

Estimate: \$ 500.00 - \$ 700.00



**Lot #715: GEORGE III IVORY AND PARQUETRY
INLAID MAHOGANY MINIATURE CHEST OF
DRAWERS**

The case with upper drawer faced with five false fronts,
above three real drawers with ivory escutcheons and
diamond banding; 13 1/2 x 12 x 8 1/4 in.

Estimate: \$ 200.00 - \$ 400.00



**Lot #716: REGENCY IVORY-MOUNTED
TORTOISESHELL TEA CADDY**

The shaped case with chamfered corners, brass keyhole escutcheon and wood bun feet, the hinged cover opening to two lidded recesses with silvered paper linings; 5 1/4 x 7 3/4 x 4 3/4 in.

Estimate: \$ 1000.00 - \$ 2000.00



Lot #717: ENGLISH WALNUT SEWING BOX

5 1/2 x 11 x 7 in. Provenance: Pook & Pook, PA.

Estimate: \$ 250.00 - \$ 450.00



**Lot #718: REGENCY IVORY-INLAID
TORTOISESHELL TEA CADDY**

The scalloped hinged lid with metal plaque, opening to two lidded recesses, on wood bun feet; 5 1/4 x 7 3/4 in.

Estimate: \$ 250.00 - \$ 450.00



**Lot #719: VICTORIAN PAPIER-MÂCHÉ WRITING
BOX**

The scalloped edge top, inset with reverse painting on glass depicting Solomon's Temple, and signed lower left Lames Patent, opening to reveal a velvet-lined writing slope, compartments and a pen tray raised on feet.

Estimate: \$ 400.00 - \$ 800.00



**Lot #720: GEORGE III BRASS-MOUNTED
YEWOOD TEA CADDY**

The hinged lid with drop handle, opening to three recesses and a shelf at rear, the oak base on bracket feet; 5 1/8 x 9 1/4 in.

Estimate: \$ 400.00 - \$ 800.00

[Back](#)

[Back to Index](#)

[Next](#)

Lots 721 - 730



Lot #721: ENGLISH BRASS-BANDED MAHOGANY AND FRUITWOOD PAIL

Of flared cylindrical form with two-color vertical slats, three bands, now with brass liner; 10 in., 11 3/4 in. diam.

Estimate: \$ 300.00 - \$ 500.00



Lot #722: CONTINENTAL PAINTED POT METAL CAMEL-FORM LIQUEUR STAND

The saddle with brackets fitted with enameled glass barrels and supporting a two-tiered holder fitted with eleven cups; 18 3/4 x 9 1/2 in.

Estimate: \$ 800.00 - \$ 1200.00



Lot #723: ITALIAN RENAISSANCE-STYLE MICRO MOSAIC-MOUNTED GILT-BRONZE TAZZA

The shallow-stemmed bowl with rope-twist edges and fitted with six black-ground floral medallions; 3 3/4 x 10 1/4 in.

Estimate: \$ 500.00 - \$ 700.00



Lot #724: JAPANESE CARVED GRANITE GARDEN LANTERN

The hexagonal pagoda roof on openwork cage and four bracket feet; 31 x 31 1/2 in.

Estimate: \$ 200.00 - \$ 300.00



Lot #725: ENGLISH PAINTED WOOD POND BOAT

With string-coiled cotton sails and iron and brass fittings, on stand; 28 x 26 in. Provenance: Devon House Antiques Inc., Stonington, CT.

Estimate: \$ 200.00 - \$ 300.00



Lot #726: AMERICAN SCHOOL: BURNING ARROW

Published by Taber Prang, Boston; color lithograph, 19 1/2 x 25 3/8 in. (sight).

Estimate: \$ 300.00 - \$ 600.00



**Lot #727: PAIR OF GEORGE I BRASS
CANDLESTICKS**

Each octagonal knopped stem with conforming nozzle and base; 6 7/8 x 4 1/8 in.

Estimate: \$ 200.00 - \$ 300.00



**Lot #728: PAIR OF FRAMED CHINESE HAND-
PAINTED WALLPAPER PANELS**

On paper laid down on canvas, framed, losses; 71 1/2 x 53 1/2 in.

Estimate: \$ 1000.00 - \$ 1500.00



**Lot #729: THREE ENGLISH BRASS-BANDED OAK
BUCKETS**

10 3/4 to 15 1/4 in., 9 3/4 to 13 1/4 in. diam.

Estimate: \$ 400.00 - \$ 800.00



**Lot #730: TWO BRITISH REVERSE SILHOUETTES
ON GLASS DEPICTING THE SHIP "HMS ROYAL
SOVEREIGN" AND "HMS ROYAL ALBERT"**

Contained in bird's eye maple and parcel gilt frames; each 12 1/2 x 16 in. (sight).

Estimate: \$ 600.00 - \$ 800.00

[Back](#)

[Back to Index](#)

[Next](#)

Lots 731 - 740



**Lot #731: SCANDINAVIAN PAINTED SPRUCE
WALL PLAQUE**

The central rondel on chip ground, shaped crest; 16 1/4 x 9 1/2 in. Provenance: Pook & Pook, PA
Estimate: \$ 300.00 - \$ 600.00



**Lot #732: PAIR OF LOUIS-PHILIPPE PATINATED
AND GILT-BRONZE CANDLESTICKS, MOUNTED
AS LAMPS**

Each reeded stem above drum base relief-cast with four putti on leaf-backed lion's paw feet; 24 1/2 and 36 1/4 in.
Estimate: \$ 700.00 - \$ 900.00



**Lot #733: PAIR OF LOUIS XVI-STYLE BRONZE
PATINATED METAL FIGURAL CHENETS**

Each modeled as a seated putto, the one with outstretched arms, the other holding a goose, on draped base; 18 x 12 in.
Estimate: \$ 800.00 - \$ 1200.00



Lot #734: ENGLISH NEEDLEWORK SAMPLER

Worked by Emma Whitehouse, Born August 9th, 1829, contained in rosewood veneered frame; 20 1/2 x 24 1/2 in. Provenance: Pook & Pook, PA.
Estimate: \$ 300.00 - \$ 600.00



**Lot #735: REGENCY CUT-GLASS OVAL EPERGNE
BOWL**

With lobed rim, diamond-faceted surface and concentric ringed base; 3 x 12 1/2 in.
Estimate: \$ 400.00 - \$ 600.00



**Lot #736: REGENCY-STYLE GILT-METAL
MOUNTED CUT-GLASS STEMMED BOWL**

The diamond-faceted hemispherical bowl with reeded rim, the stepped base on winged lion feet; 11 1/8 in., 10 1/4 in. diam.

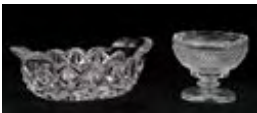
Estimate: \$ 600.00 - \$ 800.00



**Lot #737: REGENCY-STYLE GILT-BRONZE
MOUNTED CUT-GLASS CENTERPIECE BOWL**

The oval lobed bowl cut with loops, flanked by dragon and entwined vine handles, on four s-scroll legs joined by fruit swags, on concave-sided base and scroll feet; 14 7/8 x 16 1/4 x 9 in.

Estimate: \$ 800.00 - \$ 1200.00



**Lot #738: TWO REGENCY CUT-GLASS TABLE
ARTICLES**

Comprising a stemmed compote with serrated fan rim and diamond-faceted surface and an oblong bowl with lobed rim, segmented surface and starburst base; 4 7/8 x 5 1/2 in. and 4 x 11 1/2 in.

Estimate: \$ 300.00 - \$ 500.00



**Lot #739: PAIR OF LOUIS XVI-STYLE GILT-
BRONZE AND WHITE MARBLE TWO-LIGHT
CANDELABRA**

Each modeled as Cupid holding an urn from which rise the floral stems and nozzles, the drum pedestal with beading and bow-knot swags; 16 1/4 in.

Estimate: \$ 800.00 - \$ 1200.00



**Lot #740: PAIR OF LOUIS XVI-STYLE BRONZE,
GILT-BRONZE AND WHITE MARBLE TWO-
LIGHT CANDELABRA**

Each modeled as a running cherub holding aloft the arm with floral nozzles, on cylindrical pedestal fitted with chain swags, electrified; 17 3/8 in.

Estimate: \$ 700.00 - \$ 900.00

Lots 741 - 750



**Lot #741: SILESIAN-TYPE ENGRAVED GLASS
POKLE AND ASSOCIATED COVER**

The bowl engraved with a profile of Maria Theresa flanked at either side by the figure of a saint, the reverse with crowned cypher and military paraphernalia; 11 1/2 in., 16 1/2 in. diam. Provenance: The Crane Family, Dalton, MA.
Estimate: \$ 400.00 - \$ 600.00



**Lot #742: FRENCH CUT-GLASS SCENT BOTTLE
FITTED WITH A MINIATURE PORTRAIT**

The ovoid notched bowl with oval portrait of a lady in pink dress with lace collar, neck broken; 3 in.
Estimate: \$ 200.00 - \$ 400.00



**Lot #743: LALIQUE OPALESCENT GLASS
POWDER BOX COVER**

The lid with molded mark R. Lalique and swirl wheat frond, the box covered with silvered silk; 5 1/2 in. diam.
Estimate: \$ 300.00 - \$ 600.00



**Lot #744: FRENCH BRASS-INLAID MAHOGANY
SEWING BOX**

The hinged lid opening to a red-stained interior fitted with ivory and mother-of-pearl implements and lidded bottles; 3 x 10 1/4 in.
Estimate: \$ 250.00 - \$ 500.00



**Lot #745: AUSTRIAN ENAMEL SCENT BOTTLE
AND A CUT-GLASS BOTTLE**

The one of flattened tear-form, the reverse with green scrolls on black, the other with sulfide of a pansy; 4 1/2 x 3 3/8 in.
Estimate: \$ 250.00 - \$ 500.00



Lot #746: TWO NAPOLEONIC SOUVENIRS

Comprising a fan with six dancing maidens in ink on silk, the abalone sticks with applied crowned N in mother-of-pearl, in fitted box from Houbigant Chardin, and an embroidered handkerchief with crowned and mantled N Monogram and motto, "Honneur et Patrie," contained in plexibox; fan 11 x 10 3/4 in.

Estimate: \$ 500.00 - \$ 700.00



Lot #747: TWO PAGE CUTTERS AND NINE MINERAL SPECIMENS

The one with silver spiral fluted handle and ivory blade, the other faux ivory, with handle modeled as an owl perched on a branch; 12 3/4 x 11 in.

Estimate: \$ 250.00 - \$ 450.00



Lot #748: CHINESE CINNABAR LACQUER CYLINDRICAL SNUFF BOTTLE

Relief-carved with landscape views, the lid with attached dipper; 2 7/8 in.

Estimate: \$ 200.00 - \$ 400.00



Lot #749: JAPANESE ORIBE POTTERY TREFOIL LIDDED BOX

Decorated with joined rings, coils, pickets and other devices; 2 5/8 x 9 in. Provenance: E. & J. Frankel Collection.

Estimate: \$ 250.00 - \$ 500.00



Lot #750: LOUIS XVI-STYLE GILT-METAL MOUNTED LACQUER ENCRIER

The coromandel surface carved with a bird and flowers, centered by yellow-ground enamel well with hinged lid, reeded borders and bun feet, together with a gilt-metal medallion, "La Rose France Houbigant Paris"; 9 7/8 in.

Estimate: \$ 300.00 - \$ 600.00

Lots 751 - 760



Lot #751: GROUP OF SEVEN BRITISH OR FRENCH WAXWORK PROFILE BUSTS

Two identified, "Sir Isaac Newton" and "Dr. Samuel Johnson," five contained in maple frames, and two in stained wood frames; 7 1/2 x 6 1/2 in. to 7 7/8 x 7 in.
Estimate: \$ 700.00 - \$ 900.00



Lot #752: PAIR OF JAPANESE PORCELAIN KAKIEMON DESIGN BALUSTER-FORM VASES, MOUNTED AS LAMPS

Enamel painted with blossoming trees, above yellow-ground lapet band; vases 18 in. Provenance: The John M. Kluge sale, Christie's, New York.
Estimate: \$ 400.00 - \$ 800.00



Lot #753: TWO EMPIRE-STYLE BRONZE AND GILT-METAL TABLE LAMPS

The one a two-handled urn with grapevine band and a block base with lyre mount, the other a reeded candlestick on tripod lion's feet and concave-sided base, fitted with stripped tole paint shade; 28 and 27 in.
Estimate: \$ 500.00 - \$ 800.00



Lot #754: LALIQUE ACID-FINISH GLASS FIGURE OF A STALKING CHEETAH

Etched in script Lalique France; 4 1/2 x 14 3/4 in.
Estimate: \$ 150.00 - \$ 250.00



Lot #755: JEAGER-LE COULTRE POLISHED BRASS "ATMOS" CLOCK

Contained in fitted two-door case; 9 3/4 x 7 3/4 in.
Estimate: \$ 500.00 - \$ 1000.00



**Lot #756: GILT-BRONZE MOUNTED CARVED
ROCK CRYSTAL TABLE LAMP**

Incorporating nine octagonal sections joined by tiered leaf rings, on octagonal beaded base; 38 1/2 x 10 in.

Estimate: \$ 300.00 - \$ 600.00



**Lot #757: PAIR OF EMPIRE-STYLE GILT-
BRONZE MOUNTED CUT-GLASS URNS AND
COVERS**

Each faceted with satyr heads supporting floral garlands, raised on rosette and foliate topped lion's paw feet, the cover with pinecone knob; 10 1/2 x 5 3/4 in.

Estimate: \$ 500.00 - \$ 1000.00



**Lot #758: PAIR OF ROCOCO-STYLE CARVED,
SILVERED AND GILTWOOD FIGURAL
CANDELABRA**

Each a seated putto or girl in silvered shift on rockwork, supporting the gilt-metal four-branch candelabrum, on notched base; 28 x 17 1/2 in., 36 in. diam.

Estimate: \$ 500.00 - \$ 700.00



**Lot #759: PAIR OF EMPIRE-STYLE PAINTED
AND PARCEL-GILT, CAST PLASTER FEMALE
FIGURES, MOUNTED AS LAMPS**

Each modeled as an Egyptian female with bird-headed headdress, on marbelized base; 32 1/2 in.

Estimate: \$ 800.00 - \$ 1200.00



**Lot #760: LOUIS XV-STYLE GILT-METAL
MOUNTED SEVRES-STYLE PORCELAIN
CASKET**

Of serpentine outline and bombé contour, the lid with four plaques of lovers in a garden and centered by the figure of Pandora with her box, the case with figural plaques at each side, and fitted at the front corners with female caryatids, on scroll feet; 16 x 15 1/2 x 11 1/2 in.

Estimate: \$ 2000.00 - \$ 4000.00

Lots 761 - 770



Lot #761: PAIR OF ITALIAN BAROQUE CARVED GILTWOOD PRICKET STICKS

33 in.

Estimate: \$ 200.00 - \$ 400.00



Lot #762: TWO MARBLE PLAQUES

Each with natural graining, imaging a ridge with buildings, mounted on slate backs; 5 x 12 3/4 in. and 4 3/4 x 15 1/2 in.

Estimate: \$ 200.00 - \$ 400.00



Lot #763: FRENCH 16TH C.-STYLE BRONZE RELIEF PANEL

Modeled with the recumbent Venus with arm resting on shell and holding a billowing cloak, flanked by Cupid riding a sea horse; 6 3/4 x 20 1/2 in.

Estimate: \$ 250.00 - \$ 450.00



Lot #764: SET OF FOUR IVORY-MOUNTED PAINTED WOOD GAME BOXES

Each with gilt relief incorporating two crowned profiles and scrolls, centering a rotating disc with card suit medallions, enclosing game pieces, fitted into a green-painted box with gilt chinoiserie; 1 1/2 x 7 3/8 x 5 7/8 in.

Estimate: \$ 200.00 - \$ 400.00



Lot #765: SET OF FOUR NEAPOLITAN WOOD AND CLOTH FIGURES OF BLACKAMOR MUSICIANS

Each wearing a turban and a fabric tunic worked with metallic thread, variously playing a drum, cymbals or mandolin, fitted on stripe painted stands.

Estimate: \$ 800.00 - \$ 1200.00



Lot #766: PAIR OF GERMAN CARVED AND PAINTED WOOD WALL PANELS

Each depicting a curly haired youth with tongue hanging out; 13 3/4 x 9 x 4 1/2 in.

Estimate: \$ 400.00 - \$ 800.00



**Lot #767: BAROQUE-STYLE CARVED,
MARBLEIZED AND PARCEL-GILT PLINTH**

The front and sides with "malachite" panels, pilasters and veined cream borders, together with two malachite eggs; 7 1/8 x 14 1/2 x 7 1/4 in.

Estimate: \$ 300.00 - \$ 500.00



**Lot #768: PAIR OF LOUIS XVI-STYLE PATINATED
AND GILT-BRONZE CANDLESTICK URNS**

Each ovoid bowl with floral swags and leafy scroll handle, on square leaf-tip base, the lid with pomegranate knops reversing to form candle nozzle; 5 3/4 x 3 3/8 in.

Estimate: \$ 400.00 - \$ 800.00



**Lot #769: LOUIS XVI-STYLE BRONZE ARCHED
RELIEF PLAQUE**

Modeled with six Bacchic putti leading a ram by a foliate chain, contained in a giltwood frame carved with ribbon-bound reeded borders and floral crest; 12 x 16 in.

Estimate: \$ 1000.00 - \$ 1500.00



**Lot #770: CHINA TRADE SCHOOL: PORTRAIT OF
A WOMAN**

Reverse painting on glass of a female attendant, set in what appears to be its original hardwood frame; 18 1/2 x 13 in.

Estimate: \$ 300.00 - \$ 600.00

[Back](#)

[Back to Index](#)

[Next](#)

Lots 771 - 780



Lot #771: LOUIS XVI-STYLE MARBLE, BRONZE AND GILT-METAL CLOCK

The enamel dial signed Mannheim a Paris; in a case applied with music trophy and bow-knotted crossed branches, beneath a garland urn crest, flanked by putti, on breakfront base; 27 x 20 1/2 in.

Estimate: \$ 1500.00 - \$ 2500.00



Lot #772: RENAISSANCE-STYLE GILT-METAL AND AGATE SALT

The oval bowl with lobed leaf-tip rim on block pedestal ending in quatrefoil foliate-engraved fans and square base; 3 15/16 x 4 in.

Estimate: \$ 400.00 - \$ 800.00

Lot #773: NO LOT



Lot #774: PAIR OF LOUIS XV-STYLE SIX-LIGHT CANDELABRA ON JAPANESE CLOISONNÉ VASES WITH LOUIS XV-STYLE GILT-METAL MOUNTS

Each sky blue ground bowl with song birds and ducks, fitted with six floral stems ending in candle nozzles, on pierced scrollwork base; 27 3/4 in.

Estimate: \$ 1500.00 - \$ 2500.00



Lot #775: CONTINENTAL GILT-METAL AND HARDSTONE-MOUNTED CARVED IVORY ETUI CASE

Now fitted with a lighter; relief carved with a piper and a dancing couple spaced by trees, with turquoise mounts and gilt-centered flowers, the lid fitted with miniature cameo, the base with cat's eye; 4 1/4 x 2 in.

Estimate: \$ 150.00 - \$ 250.00



Lot #776: PAIR OF LOUIS XV-STYLE PATINATED AND GILT-BRONZE FIGURAL CHENETS AND A SET OF FIRE TOOLS

Modeled as a boy or girl seated and holding a song bird or a nest with three chicks, on floral and foliate chased scrollwork base, together with three fire tools on scrollwork and shell stand; 10 1/2 x 28 in. and 14 1/2 x 13 in.

Estimate: \$ 800.00 - \$ 1200.00

**Lot #777: VENETIAN ENAMELED GLASS PART
TABLE SERVICE AND EIGHT DOLPHIN STEMMED
WINES**



Comprising a caraffe and eight each octagonal water, wines and champagnes and eight circular stands, decorated with running hounds amidst vine work, together with eight pink gilded goblets with gold-flash dolphin stems; 5 7/8 to 9 1/4 in.

Estimate: \$ 700.00 - \$ 1000.00

**Lot #778: FOUR 18TH CENTURY-TYPE MINIATURE
PLAQUES**



Comprising three rectangular with lovers in garden, a lady and putto and figures viewing distant castle, and an oval with two figures against a lake vista, gilt-metal frames; 1 7/8 x 2 3/8 in. to 2 3/4 x 3 1/4 in.

Estimate: \$ 200.00 - \$ 400.00

Lot #779: FOUR OVAL MINIATURE PICTURES



Comprising a pair with views of arched bridge or ships off coast, a single with twilight river and the last a floral still life, gilt-metal frames; 1 5/8 x 2 1/4 in. to 4 1/2 x 3 3/4 in.

Estimate: \$ 200.00 - \$ 400.00

**Lot #780: PAIR OF MINIATURE RECTANGULAR
PORTRAITS OF NAPOLEON AND JOSEPHINE**



Watercolors on ivory, each contained in turquoise-mounted gilt-metal frame; 4 1/2 x 3 3/4 in.

Estimate: \$ 250.00 - \$ 450.00

[Back](#)

[Back to Index](#)

[Next](#)

Lots 781 - 790



Lot #781: CONTINENTAL SCHOOL: LADY IN A GARDEN

Watercolor on ivory, contained in an ivory frame; 4 3/8 x 3 5/8 in. frame.

Estimate: \$ 300.00 - \$ 500.00



Lot #781A: NANTUCKET LIGHTSHIP BASKET, MITCHELL RAY

Labeled, the oval body with oak swing handle; 12 3/4 x 14 1/2 x 11 1/2 in.

Estimate: \$ 800.00 - \$ 1200.00



Lot #782: SEEDWORK COMPOSITION IN SHADOWBOX

Modeled with an open winged swan above four cygnets, within an arch of flowers, grapes and cherries, on pleated wine red silk ground, painted and parcel gilt frame; 28 1/2 x 33 1/4 x 7 in. Provenance: The Berkshire Museum, Pittsfield, MA.

Estimate: \$ 300.00 - \$ 600.00



Lot #783: EUROPEAN SCHOOL: CHINOISERIE PANEL

Oil on canvas.

Estimate: \$ 700.00 - \$ 900.00



Lot #784: CONTINENTAL CARVED IVORY PLAQUE: "PRINCEPSA KUNITZ COMESA RITTBERG"

Signed J. Guidorer, representing a nobleman with hand on book, beneath drapery swag flanked by a coat of arms and the date CIDID CC IXV, velvet-lined frame; 9 1/4 x 5 3/4 in.

Estimate: \$ 800.00 - \$ 1200.00



Lot #785: CAST-IRON HORSE SCRAPER APPLIQUE

1 ft. 3 in. x 1 ft. 5 1/2 in. Provenance: Stair Galleries; formerly the collection of a Main Line, Pennsylvania collector.

Estimate: \$ 150.00 - \$ 250.00



Lot #786: PAIR OF CAST-IRON HORSE HEADS

10 x 9 in. Provenance: Stair Galleries; formerly the collection of a Main Line, Pennsylvania collector.

Estimate: \$ 600.00 - \$ 800.00



Lot #787: CAST-IRON HORSEHEAD WOOD HITCHING POST

Modeled facing forward with long wavy mane, screwed to post; 42 x 6 x 9 3/4 in.

Estimate: \$ 250.00 - \$ 450.00



Lot #788: WROUGHT-IRON BRACKET

The scrolling arm with horsehead above horseshoe pendant; 21 x 5 x 30 1/4 in. Provenance: Stair Galleries, formerly from the collection of a Main Line, Pennsylvania collector.

Estimate: \$ 400.00 - \$ 800.00



Lot #789: PAIR OF PAINTED COWS

Together with a cow model and an Angus cow model.

Estimate: \$ 100.00 - \$ 200.00



Lot #790: PAIR OF CARVED WALNUT ANIMALIER GROUPS, MOUNTED AS LAMPS

Carved as a hound pursuing a goat or rabbit around a tree, amidst ferns and roots; 13 1/4 in. Provenance: The Warren Fett sale, Sotheby's, New York.

Estimate: \$ 700.00 - \$ 900.00

Lots 791 - 800



Lot #791: PAIR OF GERMAN CARVED WALNUT IBEXES

A male and female, each on rockwork; 20 x 11 3/4 in. and 19 1/4 x 11 1/2 in.

Estimate: \$ 300.00 - \$ 500.00



Lot #792: PAIR OF HORSE SCRAPER APPLIQUES

1 ft 4 1/2 in. x 1 ft. 4 in. Provenance: Stair Galleries, formerly the collection of a Main Line, Pennsylvania collector.

Estimate: \$ 500.00 - \$ 700.00



Lot #793: PAINTED CAST IRON COW-FORM FINIAL: "BOSS"

12 1/2 x 14 1/2 in.

Estimate: \$ 300.00 - \$ 500.00



Lot #794: PAINTED ZINC BULL'S HEAD WALL MOUNT

16 x 15 1/2 x 15 1/2 in. Provenance: The Warren Fett sale, Sotheby's, New York.

Estimate: \$ 500.00 - \$ 700.00



Lot #795: BLACK FOREST CARVED WALNUT BOVINE GROUP

Incorporating a bull, cow with bell around neck and recumbent calf, on naturalistic base; 14 3/4 x 26 1/2 in.

Provenance: Stair Galleries, formerly the collection of a Main Line, Pennsylvania collector.

Estimate: \$ 2000.00 - \$ 4000.00



Lot #796: TWO ZINC HORSE HEAD WALL MOUNTS

Each modeled facing front, with long mane; 15 x 7 in. and 18 x 15 in.

Estimate: \$ 300.00 - \$ 600.00



Lot #797: BLACK FOREST CARVED WALNUT BEAR-FORM COAT RACK

Carved as a tree trunk with mother bear reaching up to cub at top, fronted by double loop umbrella holder, the base carved with flowers and water lily pads; 6 ft. 7 in. x 22 1/2 x 20 in. Provenance: The Estate of Fred Hughes, Sotheby's, New York.

Estimate: \$ 3000.00 - \$ 6000.00



Lot #798: BLACK FOREST CARVED WALNUT FIGURE OF A RECUMBENT HOUND

Inset with glass eyes; 5 x 11 in.

Estimate: \$ 200.00 - \$ 400.00



Lot #799: PAINTED CAST ZINC DONKEY'S HEAD WALL MOUNT

22 x 13 1/2 in. Provenance: The Warren Fett sale, Sotheby's, New York.

Estimate: \$ 800.00 - \$ 1200.00



Lot #800: PAIR OF FRENCH GILT-METAL FIGURES OF BEARS AND A CAST METAL BEAR

Each modeled recumbent, one on red marble base; 1 3/4 x 7 1/2 in. and 3 3/4 x 12 1/2 in.

Estimate: \$ 700.00 - \$ 900.00

[Back](#)

[Back to Index](#)

[Next](#)