

Lots 1 - 100



Lot #1: GEORGE II MAHOGANY AND PARCEL-GILT MIRROR

The plate within gilt leaf tip band & molded frame surmounted by Prince-of-Wales crest, shaped base, 42 1/2 x 21 1/2 in.

Estimate: \$ 700.00 - \$ 900.00



Lot #2: FINE GEORGE II CARVED WALNUT WING ARMCHAIR

The flat top rail flanked by S-form wings continuing into out scroll arm supports, the bowed seat on shell carved cabriole legs ending in trifold feet; 44 1/2 x 33 x 21 in.

Estimate: \$ 6000.00 - \$ 8000.00



Lot #3: GEORGE III MAHOGANY CELLARETTE ON STAND

The square top opening to reveal a divided interior, raised on a stand & joined by stretchers, 28 x 16 1/2 x 16 1/2 in.

Estimate: \$ 600.00 - \$ 800.00



Lot #4: GEORGE III BRASS-BANDED MAHOGANY PLATE BUCKET

Of cylindrical tapered form with 2 bands & swing handle; 17 1/2 in. tall, 14 1/2 in. diam.

Estimate: \$ 1000.00 - \$ 1500.00



Lot #5: GEORGE III INLAID MAHOGANY WRITING TABLE

The hinged top with cross banding opening to central baize-lined writing flap, lidded & open recesses & inkwell, raised on square tapering legs; 29 x 26 x 18 1/4 in.

Estimate: \$ 1400.00 - \$ 1800.00



Lot #6: DIMINUTIVE GEORGE III MAHOGANY SIDEBOARD

The serpentine-shaped top above a conforming case fitted with 1 long and 2 short drawers, inlaid ebony & boxwood on square tapering legs ending in spade feet; 32 3/4 x 42 1/2 x 21 1/4 in.

Provenance: Stair & Co.

Estimate: \$ 2000.00 - \$ 3000.00



Lot #7: GEORGE III MAHOGANY PEMBROKE TABLE

The oval top with 2 drop-leaves, the frieze fit with 1 real and 1 dummy drawer, the whole raised on square tapering legs ending in box cup casters; 29 1/4 x 42 x 36 in.

Estimate: \$ 1500.00 - \$ 2500.00



Lot #8: PAIR OF PROVINCIAL GEORGE III MAHOGANY SIDE CHAIRS

Estimate: \$ 400.00 - \$ 600.00



Lot #9: GEORGE III MAHOGANY AND BRASS BOUND CELLARETTE

The flat hinged top above a brass bound oval body; raised on shaped square legs & ending in casters. 24 x 22 x 17 1/4 in.

Estimate: \$ 2000.00 - \$ 3000.00



Lot #10: LATE GEORGE III MAHOGANY DROP-LEAF TABLE

The figured mahogany top raised on a base with two swing legs; the whole raised on fluted square tapering legs; 29 1/2 in. x 5 ft. 1 in. x 4 ft. 11 in.

Estimate: \$ 2000.00 - \$ 3000.00



Lot #11: GEORGE III INLAID MAHOGANY DEMILUNE CARD TABLE

The folding top with entwined vinework border, baize-lined playing surface, on tapered legs ending in brass box casters; 28 3/4 x 36 x 17 1/2 in.

Estimate: \$ 1400.00 - \$ 1800.00



Lot #12: EARLY REGENCY SINGLE-DRAWER MAHOGANY SIDE TABLE

The galleried top above a frieze fitted with a drawer, the whole raised on outward splayed tapering legs. Provenance: Stair & Co.

Estimate: \$ 500.00 - \$ 700.00



Lot #13: EARLY REGENCY WORK TABLE

The rectangular top with serpentine ends fitted with a drawer raised on rectangular legs and joined by a turned stretcher, ending in turned feet. Provenance: Stair & Co.

Estimate: \$ 1000.00 - \$1500.00



Lot #14: GEORGE III INLAID MAHOGANY SIDE TABLE

The cross-banded top above a cockbeaded drawer with brass ring drop handles, on tapered legs ending in brass box casters; 28 1/2 x 33 x 19 1/4 in.

Estimate: \$ 800.00 - \$ 1200.00



Lot #15: GEORGE III INLAID MAHOGANY LINEN PRESS

The upper part with satinwood cross-banded cornice above a pair of doors opening to 5 open drawers; the lower section containing 2 short and 2 long cockbeaded drawers, on bracket feet, 6 ft. 11 in. x 4 ft. 1 1/2 in. x 24 1/2 in.

Estimate: \$ 2000.00 - \$ 4000.00



Lot #16: GEORGE III MAHOGANY SMALL BOW-FRONTED CHEST-OF-DRAWERS

The top above 2 short & 3 long cockbeaded drawers with brass oval drop handles, splayed bracket feet; 34 1/8 x 33 1/4 x 19 3/8 in.

Estimate: \$ 1000.00 - \$ 1500.00



Lot #17: LATE GEORGE III MAHOGANY SECRETARY BOOKCASE

The cresting above a pair of glazed doors enclosing 3 adjustable shelves below 4 graduated drawers; the top drawer fitted as a secretary drawer with pigeon holes & 8 small drawers, the whole raised on bracket feet. 7 ft. 6 in. x 4 ft. x 22 in.

Estimate: \$ 4000.00 - \$ 6000.00



Lot #18: PAIR OF GEORGE III-STYLE GILT MIRRORS

Modern, cast composition; 49 x 34 in.

Estimate: \$ 300.00 - \$ 500.00



Lot #19: SET OF TEN GEORGE III-STYLE MAHOGANY DINING CHAIRS

Each buttoned upholstered back & seat on canted legs joined by H-stretchers, only 9 pictured, seat depths vary; 37 1/2 in. tall.
Estimate: \$ 1500.00 - \$ 2500.00



Lot #20: PAIR OF GEORGE III-STYLE INLAID MAHOGANY D-SHAPED CONSOLE TABLES

Each frieze with diamond checkered lower edge & raised on square tapered legs surmounted by diamond medallions, ending in brass box casters; 29 1/2 x 4 ft. x 24 in.
Estimate: \$ 600.00 - \$ 800.00



Lot #21: REGENCY MAHOGANY SET OF LIBRARY STEPS

The three rectangular steps on vase turned & block legs joined by box stretchers; 27 1/2 x 17 x 21 in.
Estimate: \$ 700.00 - \$ 900.00



Lot #22: EARLY REGENCY GILTWOOD CONVEX MIRROR

The carved eagle cresting above a carved circular frame; fitted with spears & two candle arms, terminating in a foliate carved apron; 41 x 23 in.
Estimate: \$ 3000.00 - \$ 5000.00



Lot #23: GEORGE III MAHOGANY LIBRARY BENCH/STAIRS

With rectangular seat; turned on side forming 3 steps, round legs joined by box stretchers; 18 x 32 1/4 x 19 in.

Estimate: \$ 700.00 - \$ 900.00



Lot #24: REGENCY METAMORPHIC CARVED MAHOGANY ARMCHAIR

With reeded top rail & arms, hinged seat folding forward to form steps; 36 x 21 x 21 in.

Estimate: \$ 1000.00 - \$ 1500.00



Lot #25: LATE GEORGE III MAHOGANY CHEST-OF-DRAWERS

The top above a case fitted with 2 short & 3 long graduated drawers above a shaped apron, ending in bracket feet; 40 x 40 x 19 1/2 in., replaced hardware.

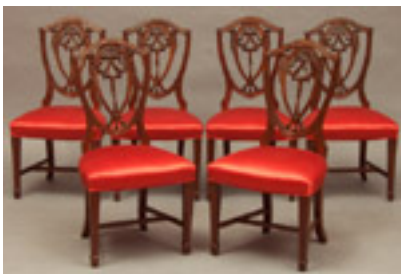
Estimate: \$ 1000.00 - \$ 1500.00



Lot #26: LATE REGENCY MAHOGANY DINING TABLE

The circular top above an urn-shaped turned support, resting on a plinth on shaped & carved legs; 30 x 68 in.

Estimate: \$ 5000.00 - \$ 7000.00



Lot #27: SET OF SIX CARVED MAHOGANY SHIELD-BACK SIDE CHAIRS

Each open back carved with low-knotted drapery swags, the bow-fronted upholstery seats on incised tapered legs joined by H-stretchers.

Estimate: \$ 800.00 - \$ 1000.00



Lot #28: REGENCY ROSEWOOD AND EBONY INLAID TWO DOOR SIDE CABINET

The marble top above a pair of convex doors opening to reveal 3 adjustable shelves; the whole raised on ebonized bun feet; 35 x 31 1/2 x 16 1/2 in.

Estimate: \$ 2000.00 - \$ 5000.00



Lot #29: REGENCY MAHOGANY PEMBROKE TABLE

With one drawer and one false front drawer; 28 3/4 x 22 3/4 x 33 7/8 in.

Estimate: \$ 2000.00 - \$ 3000.00



Lot #30: GEORGE IV MAHOGANY SIDEBOARD

The rectangular top with molded backboard, each pedestal enclosed by an arch paneled door with Ionic pilasters, opening to shelves or a deep drawer, on plinths; 37 3/4 in. x 6 ft. 6 1/4 in. x 27 1/4 in.

Estimate: \$ 2500.00 - \$ 4500.00



Lot #31: GEORGE III MAHOGANY TRIPOD TABLE

The dish top above a birdcage support raised on a fluted and turned stem on cabriole legs and pad feet; 28 1/2 x 31 3/4 in.

Estimate: \$ 500.00 - \$ 700.00



Lot #32: GEORGE IV MAHOGANY DINING TABLE

The divided molded top with bowed ends, the box frieze raised on carved fluted legs ending in brass thimble casters, with 2 extra leaves & crank; 30 in. x 8 ft. 3 1/2 in. x 4 ft. 5 1/2 in.
Estimate: \$ 2800.00 - \$ 3200.00



Lot #33: CHINESE EXPORT LACQUER WORK TABLE

The shaped top opening to reveal a fitted interior, raised on turned & decorated legs; 27 1/2 x 25 x 17 in.
Estimate: \$ 800.00 - \$ 1200.00



Lot #34: WILLIAM IV-STYLE WALNUT VENEERED LOW TABLE

Formerly a trestle table, 21 in. x 4 ft. 10 in. x 18 1/2 in.
Estimate: \$ 250.00 - \$ 450.00



Lot #35: EARLY VICTORIAN MAHOGANY SERVING TABLE

The galleried top above a frieze fitted with a hidden drawer; the whole raised on turned & reeded legs and joined by a platform stretcher, ending in turned feet & cup casters; 36 1/2 x 67 1/4 x 18 1/2 in.
Estimate: \$ 2500.00 - \$ 4500.00



Lot #36: VICTORIAN BURL WALNUT DAVENPORT DESK

The 3/4 in. gallery above a leather lined slant-front opening to 2 small drawers, above a lateral writing drawer & 4 drawers, spiral twist legs; 31 1/2 x 21 1/4 x 22 in.
Estimate: \$ 1000.00 - \$ 1500.00



Lot #37: EARLY VICTORIAN MAHOGANY COACHING TRAY
The hinged top on folding legs & joined by turned stretcher; 27 1/2 x 33 1/2 x 16 3/4 in.
Estimate: \$ 300.00 - \$ 500.00



Lot #38: VICTORIAN SILVER-PLATE TRAY ON STAND
The shaped top chased with foliage above a conforming base with silver highlights; 18 x 34 1/4 x 25 in. Provenance: Cafe Royale, London.
Estimate: \$ 800.00 - \$ 1200.00



Lot #39: PAIR OF WILLIAM & MARY-STYLE CARVED WALNUT SIDE CHAIRS
Each carved top rail above pierced back, the nailed seats on shaped legs joined by carved H-stretcher; 4 ft. tall.
Estimate: \$ 300.00 - \$ 500.00



Lot #40: ENGLISH CHINOISERIE DECORATED WHEEL BAROMETER
By P. Corti, Exeter, with dry/damp, thermometer/barometer & signature level dials & small convex mirror; 37 in. tall.
Estimate: \$ 500.00 - \$ 700.00



Lot #41: GEORGE III SILVER HELMET-FORM CREAMER

Marked P.B. ___B, London 1790 (possibly Peter & Ann Bateman); 5 3/4 in. tall, approx. 2.05 ozs.

Estimate: \$ 200.00 - \$ 400.00



Lot #42: SIX GEORGE III SILVER ARMORIAL SOUP SPOONS

Marks for Peter, Ann & William Bateman, London, 1802: each engraved with an armor clad arm clutching a sword above script monogram, 8 1/2 in. long; approx. 13 oz.

Estimate: \$ 600.00 - \$ 800.00



Lot #43: PAIR OF GEORGE III SILVER GOBLETS

With marks for Henry Chawner, London, 1809, together with another with marks for P.B., London 1809; all with reeded lower bowls & bases; approx. 24 oz.

Estimate: \$ 600.00 - \$ 900.00



Lot #44: GEORGE III SILVER GILT ARMORIAL MAZARINE WITH LATER HANDLES

Marks for Paul Storr, London, 1809, the handles W.J.B., London 1908; pierced with stellate border, X's & C-scrolls. Length over handles: 18 in.; approx. 43 oz.

Estimate: \$ 1000.00 - \$ 1500.00



Lot #45: GEORGE III SILVER ARMORIAL KETTLE ON WARMING STAND

Marked P.S., London, 1813: the flared bowl with mantled armorial reeded spigot & wood mounted swing handle with removable dished lid with armorial, the tripod stand with reeded legs joined by concave sided stretcher with removable burner; 12 1/2 in. tall, approx. 85 oz. total wt.

Estimate: \$ 700.00 - \$ 900.00



Lot #46: PAIR OF HUNT AND ROSKELL SILVER SOUP PLATES WITH GARRARD'S SILVER-PLATED DOMES ON SILVER-PLATED WARMING STANDS

The plates inscribed Hunt & Roskell Late Storr & Mortimer and with marks for I.H. & R.R., London, 1853; with gadroon and leaf rims and engraved ribbon hunt horn armorial; the covers with conforming armorials. Overall height with stand: 10 1/4 in., depth: 10 3/4 in., the plates approx. 44 oz.

Estimate: \$ 500.00 - \$ 800.00



Lot #47: TIFFANY & CO. SILVER KETTLE

On English silver-plate warming stand; marks used 1854 to 1870: the bowl repoussé & chased with ivy & berries, swan's neck spout rising from mask head, hinged dome cover & swing handles, with masks & bone beads; approx. 43 oz.

Estimate: \$ 1000.00 - \$ 1500.00



Lot #48: ASSEMBLED SET OF FOUR ENGLISH SILVER MINIATURE MONTEITHS

3 3/4 in. diam., approx. 12 oz.

Estimate: \$ 300.00 - \$ 400.00



Lot #49: VICTORIAN SILVER BEAKER

Impressed Elkington & marks for Birmingham, 1882, together with a Towle beaker & a silver-plated goblet; 3 1/2 to 6 1/8 in. tall.

Estimate: \$ 200.00 - \$ 400.00



Lot #50: ENGLISH SILVER MUFFINEER

Marks for H. W. Sheffield 1899: baluster-form, with pierced dome cover & urn finial, engraved armorial; 8 3/4 in. tall.

Estimate: \$ 150.00 - \$ 250.00



Lot #51: EDWARDIAN SILVER DRESSING TABLE MIRROR

Marks for William Comyns, London, 1909: the single plate with reeded spindles supporting a floral crest, on velvet covered easel support; 17 1/4 x 21 in.

Estimate: \$ 600.00 - \$ 800.00



Lot #52: ASSEMBLED GROUP OF AMERICAN COIN SILVER SPOONS

Estimate: \$ 200.00 - \$ 300.00



Lot #53: SILVER IRISH REPRODUCTION DISH

10 in. diam., approx. 17 oz.

Estimate: \$ 200.00 - \$ 300.00



Lot #54: , WALLACE SILVER "GRANDE BAROQUE" FLATWARE SERVICE

Comprising: 14 hollow-handled dinner knives, 14 dinner forks, 14 dessert forks, 14 cream soup spoons, 14 teaspoons, 2 pickle forks, 1 slotted tomato server, 2-pc. salad set, 1 cold meat fork, 1 sugar server, 1 cake knife, 1 gravy ladle. Approx. 79 pcs.

Estimate: \$ 1200.00 - \$ 1800.00



Lot #55: REED & BARTON SILVER PARTIAL FLATWARE SERVICE

Service for 12; one butter knife and one teaspoon missing; three serving spoons; Approximately 97 pcs.

Estimate: \$ 1000.00 - \$ 1200.00



Lot #56: GROUP OF AMERICAN SILVER FLATWARE

By Gorham, Wallace, Towle, Whiting, Jensen & others; Approximately 73 pcs.

Estimate: \$ 450.00 - \$ 650.00



Lot #57: PAIR OF SILVER ON BRASS SHORT CANDLESTICKS

Marked R.F. & Co. L., 5 in. tall.

Estimate: \$ 100.00 - \$ 200.00



Lot #58: TWO SILVER-PLATED TABLE ARTICLES

Heights: 2 3/4 & 3 1/2 in., widths: 5 1/2 & 6 in.

Estimate: \$ 100.00 - \$ 200.00



Lot #59: AUGSBURG SILVER REPOUSSE SMALL CHARGER

Together with a silver-plated plate. Length: 12 1/2 in., diameter: 11 in.

Estimate: \$ 150.00 - \$ 250.00



Lot #60: TEN CONTINENTAL SILVER AND OTHER METAL FLATWARE PIECES AND A SCOOP

Estimate: \$ 100.00 - \$ 200.00



Lot #61: THREE ENGLISH SILVER-PLATED PLATTERS

Together with a Christofle platter; the longest: 18 1/2 in.

Estimate: \$ 100.00 - \$ 200.00



Lot #62: DUTCH SILVER OCTAGONAL BOWL

Together with a Continental tea caddy & a silver-plated box.

Estimate: \$ 300.00 - \$ 400.00



Lot #63: SIX SILVER-PLATED TABLE ARTICLES

Estimate: \$ 80.00 - \$ 120.00



Lot #64: THREE CONTINENTAL SILVER WINE TASTERS

Two with incised names, the largest with punch work grapevines & snake handle, the longest: 4 1/4 in.; approx. 9 oz.

Estimate: \$ 200.00 - \$ 300.00



Lot #65: PAIR OF 19TH C. CUT-GLASS GOBLETS AND COVERS

With gilt rims, the dome covers with hexagonal knobs. 4 1/2 x 4 in.

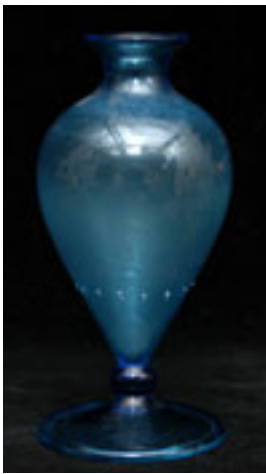
Estimate: \$ 400.00 - \$ 600.00



Lot #66: ASSEMBLED GROUP OF GILT DECORATED AND ETCHED GLASS DRINKING VESSELS

Not all pictured; approx. 54 pieces.

Estimate: \$ 700.00 - \$ 900.00



Lot #67: VENETIAN VASE

Estimate: \$ 50.00 - \$ 70.00



Lot #68: DAUM GLASS VASE

10 1/2 x 11 3/4 in.

Estimate: \$ 300.00 - \$ 500.00



Lot #69: URN WITH FLORAL DECORATION

Gouache on silk, signed lower left on the plinth, Jas. Cox; 16 x 12 1/2 in. (sight).

Estimate: \$ 400.00 - \$ 600.00



Lot #70: TWO OVAL PORTRAIT MINIATURES

Together with a pot lid. Framed: 4 1/4 x 5 1/2 in. & 4 1/2 x 4 in.

Estimate: \$ 200.00 - \$ 400.00



Lot #71: SIX BRONZE OVAL PROFILE MEDALLIONS

2 3/4 x 2 1/4 in.

Estimate: \$ 300.00 - \$ 500.00



Lot #72: GILT-BRONZE RONDEL OF NAPOLEON

Empire-style, 6 in. diam.

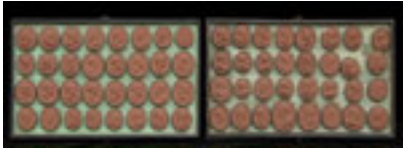
Estimate: \$ 150.00 - \$ 250.00



Lot #73: GROUP OF SIX CONTINENTAL PORTRAIT MINIATURES

Images: 3 x 2 1/4 in. to 1 3/4 x 1 3/8 in.; rondel: 3 1/4 in.

Estimate: \$ 200.00 - \$ 400.00



Lot #74: 64 COMPOSITION RELIEF PORTRAIT MEDALLIONS

Mounted in 2 trays, each measuring 9 3/4 x 15 1/4 in.

Estimate: \$ 300.00 - \$ 500.00



Lot #75: TWO PRINTS AFTER PIRANESI

Engravings on paper, 21 1/8 x 30 1/4 in.

Estimate: \$ 150.00 - \$ 250.00



Lot #76: THREE PRINTS AFTER PIRANESI

Engravings on paper, 20 1/8 x 28 9/16 in., 20 3/8 x 28 5/8 in. & 32 x 21 7/8 in.; one trimmed.

Estimate: \$ 150.00 - \$ 250.00



Lot #77: "VEUE DEU CHATEAU DE ST. CLOUD," AFTER AVELINE

Engraving with hand-coloring on paper, 14 x 20 1/2 in. (plate).

Estimate: \$ 150.00 - \$ 250.00



Lot #78: PAINTED COMPOSITION BUST

Possibly Sir Isaac Newton, 28 x 19 1/2 x 11 1/3 in.

Estimate: \$ 300.00 - \$ 500.00



Lot #79: METAL BUST OF A GENTLEMAN

17 1/4 in. tall.

Estimate: \$ 200.00 - \$ 400.00



Lot #80: PAIR OF FRENCH PAINTED PORCELAIN PORTRAITS

Titled on reverse, "Madame Adelaide" & "Mme. Victore"; 8 1/4 x 7 in.

Estimate: \$ 300.00 - \$ 500.00



Lot #81: TWO FRENCH PRINTS

On paper with hand-coloring; 9 5/8 x 16 1/2 in. & 10 3/16 x 14 1/2 in. (images).

\$ 100.00 - \$ 200.00



Lot #82: CHINESE BLUE AND WHITE PORCELAIN MOUNTED BLACK LACQUER PANEL

16 3/4 x 27 in.

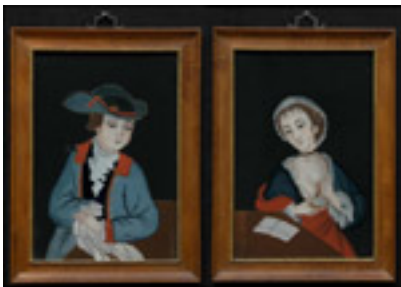
Estimate: \$ 200.00 - \$ 400.00



Lot #83: TWO CHINESE ORNITHOLOGICAL PAINTINGS

On vellum, framed: 9 1/2 x 14 in. & 9 1/2 x 14 1/4 in.

Estimate: \$ 300.00 - \$ 500.00



Lot #84: PAIR OF CHINESE EXPORT REVERSE PAINTINGS ON GLASS

The first a lady holding a watch fob, the other a gentleman in tricorne hat & holding a handkerchief; each 20 x 14 in.

Estimate: \$ 2000.00 - \$ 3000.00



Lot #85: ORIENTAL PORTRAIT OF A CAUCASIAN BOY

Gouache & watercolor on silk, 18 1/2 x 12 1/2 in. (image, sight).

Estimate: \$ 40.00 - \$ 60.00



Lot #86: SPANISH COLONIAL PAINTED PANEL

8 1/4 x 6 1/2 in.

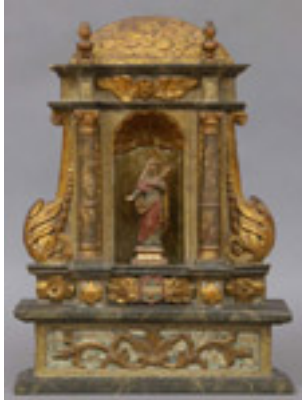
Estimate: \$ 50.00 - \$ 75.00



Lot #87: MAP OF THE ROUTE OF PRINCE MAXIMILIAN OF WIED

Tracing his route from Boston to the upper Missouri, 1852-1854, 35 x 24 1/2 in. (sight), published in Paris by M. Charles Bodner, color engraving.

Estimate: \$ 100.00 - \$ 200.00



Lot #88: CONTINENTAL BAROQUE CARVED, PAINTED AND PARCEL-GILT & COMPOSITION SHRINE

21 1/2 x 16 x 4 1/2 in.

Estimate: \$ 400.00 - \$ 600.00



Lot #89: CONTINENTAL SCHOOL, ST. GEORGE

Oil on paper applied to a carved wood panel, 12 x 10 in.

Estimate: \$ 150.00 - \$ 250.00



Lot #90: BRONZE FIGURE OF A ROMAN SCHOLAR, AFTER MOREAU

10 x 11 1/2 x 4 1/2 in.

Estimate: \$ 200.00 - \$ 400.00



Lot #91: BRONZE OF A CHILD VIOLINIST, AFTER THAREL
Signed & with Susse Freres foundry mark; 6 1/2 x 8 in.
Estimate: \$ 800.00 - \$ 1200.00



Lot #92: BRONZE FIGURE GROUP, AFTER MOREAU
Signed, on black marble base, 12 1/4 x 11 x 5 1/2 in.
Estimate: \$ 300.00 - \$ 500.00



**Lot #93: P. LOISEAU-ROSSEAU, GILT BRONZE BUST OF A
MEDIEVAL MAIDEN**
On alabaster base, 10 1/4 x 8 in.
Estimate: \$ 300.00 - \$ 500.00



Lot #94: CANOEING THROUGH THE ISLANDS

Engraving on paper with hand-colored highlights, 7 x 4 3/4 in. (image, sight).

Estimate: \$ 50.00 - \$ 75.00



Lot #95: PAIR OF REPRODUCTION PRINTS AFTER H. ALKEN

"A Strange Country" & "A Rare Sort for the Downs," from Fore's Hunting Casualties; framed: 16 3/4 x 18 3/4 in.

Estimate: \$ 100.00 - \$ 200.00



Lot #96: PAIR OF REGENCE FAUTEUILS

The arched cresting carved with acanthus leaves and bowknots above a caned seat back, the caned seat raised on cabriole legs ending in scroll feet joined by a wavy stretcher; 36 1/2 x 24 1/2 x 17 1/2 in. (cushions not shown).

Estimate: \$ 1000.00 - \$ 1500.00



Lot #97: RESTAURATION WALNUT FAUTEUIL

The inward curved crestring rail above oval back splat, above upholstered seat, ending in tapered legs, the crestring & back splat ending in brass; formerly a fauteuil bureau de cabinet; 34 x 21 1/2 x 22 in.

Estimate: \$ 300.00 - \$ 500.00



**Lot #98: GERMAN MARQUETRY WALNUT AND CHERRY
INLAID BUREAU CABINET 18TH C.,**

The upper section fitted with a central door opening to reveal a drawer, the door flanked by 5 drawers above a lower section with a fall-front opening to reveal a baize-lined writing surface and an interior fitted with drawers; the whole raised on bun feet, 78 x 46 x 24 in.

Estimate: \$ 5000.00 - \$ 7000.00



Lot #99: PAIR OF LOUIS XV-STYLE BERGERES

Estimate: \$ 1000.00 - \$ 1500.00



Lot #100: ITALIAN CIRCULAR MARQUETRY TRIPOD TABLE

The circular top inlaid with figures surmounted by marquetry inlay raised on a turned stem ending in shaped and turned legs; 31 x 35 in.

Estimate: \$ 800.00 - \$ 1200.00