

## Lots 101 - 200



**Lot #101: LOUIS XV FLORAL MARQUETRY INLAID KINGWOOD MINIATURE SERPENTINE FRONTED COMMODE WITH BROCATELLE MARBLE TOP**

Containing 3 drawers & inlaid at the sides with floral stems; 10 1/4 in. x 15 1/4 in. x 8 in.  
Estimate: \$1,200 - \$1,400



**Lot #102: LOUIS XVI-STYLE GILT BRONZE MOUNTED BLUE JOHN CACHE POT**

Of block form, the corners with ram's heads above tiered acanthus spines & hoof feet. Height: 3 7/8 in., Width: 5 in.  
Estimate: \$1,000 - \$1,500



**Lot #103: PAIR OF REGENCE-STYLE CARVED GILTWOOD WALL BRACKETS**

Each breakfront, on double scroll supports & acanthus carved back plate; 12 in. x 10 1/2 in. x 7 1/4 in.  
Estimate: \$700 - \$900



**Lot #104: PARIS PORCELAIN GREEN-GLAZED BASKET WITH GILT METAL SWING HANDLE**

Height: 3 1/2 in. Width: 9 1/2 in.  
Estimate: \$300 - \$500



**Lot #105: MEXICAN SILVER LETTER BOX**

The rectangular hinged top with script monogram, velvet lining; approx. 70 ozs., 3 5/8 in. x 12 in. x 8 in.  
Estimate: \$400 - \$600



**Lot #106: TWO GILT METAL MOUNTED ALABASTER BOXES & EIGHT GILT METAL SHELL-FORM INDIVIDUAL ASHTRAYS**

Tallest box: 11 1/2 in.  
Estimate: \$100 - \$150



**Lot #107: TWO CHINESE PORCELAIN CUPS WITH GILT METAL MOUNTS**

One famille rose with open work honeycomb outer wall & Louis XV scrollwork mounts, the other famille verte with pierced rim & tripod S-form legs; 5 1/2 in. & 5 1/4 in. tall. Estimate: \$500 - \$700



**Lot #108: PERSIAN PAINTED POTTERY TILE**

14 in. x 9 1/2 in.  
Estimate: \$100 - \$150



**Lot #109: SET OF SEVEN CONTINENTAL CYLINDRICAL GRADUATED MEASURES**

Some with displayed eagle mark & initials G.K., with angular handles & everted lips.  
1 5/8 in. to 7 1/8 in.  
Estimate: \$125 - \$175



**Lot #110: SEVRES COBALT GROUND PORCELAIN JARDINIERE**

Mark of interlaced L's enclosing "T"; the scalloped outline with figural reserve, signed A. Viglom, at the front & a lake scene on the reverse, scrollwork handles & feet: 6 1/2 in. x 11 3/4 in.  
Estimate: \$400 - \$600



**Lot #111: SPANISH COLONIAL BAROQUE BONE INLAID WALNUT VARGUENO ON STAND**

The upper part with metal mounted door, now detached & containing an arrangement of small drawers centering a cupboard door applied with architectural mounts, flanked by carrying handles, the lower part containing 2 deep drawers & one long drawer, flanked by fielded panels, on block feet; 62 in. x 46 in. x 20 in.  
Estimate: \$3,000 - \$5,000



**Lot #112: DAMASCENE MOTHER-OF-PEARL & BONE  
INLAID TALL  
CHEST-OF-DRAWERS WITH GLASS-PANELED TOP**

48 3/4 in. x 33 1/2 in. x 20 in.  
Estimate: \$800 - \$1,200



**Lot #113: PAIR OF DUTCH NEOCLASSICAL -STYLE  
MAHOGANY JARDINIERE STANDS**

Each hexagonal cane paneled plant holder on tripod swan's head supports joined by a circular shelf, ending in claw & ball feet on concave sided base; 36 in. x 14 in.  
Estimate: \$700 - \$900



**Lot #114: CONTINENTAL ROCOCO FLORAL MARQUETRY  
INLAID KINGWOOD  
COMMUNE**

With mottled marble top, of serpentine outline and bombe contour, containing 3 drawers with floral and bird panels and gilt-metal key escutcheons and handles, the shaped apron and outset corners also with gilt-metal mounts; 33 1/2 in. x 45 1/2 in. x 23 3/4 in.  
Estimate: \$4,000 - \$6,000



**Lot #115: CONTINENTAL BAROQUE WALNUT & PARCEL-  
GILT MIRROR**

The cresting with fruit filled basket flanked by cornucopia; the base applied with laurel leaf swags. 53 in. x 21 in.  
Estimate: \$2,500 - \$3,500



**Lot #116: TWO SEVENTEENTH CENTURY STYLE  
ARMCHAIRS**

Comprising of a bobbin-turned chairs on turned & block legs & a folding child's savonarola chair with rosette & lion's paw feet carving.  
Estimate: \$300 - \$500



**Lot #117: LOUIS XVI CARVED GILTWOOD FOOT STOOL**

The rectangular velvet upholstered top on short fluted legs surmounted by paterae. Height: 7 in., Width: 13 3/4 in.

Estimate: \$300 - \$500



**Lot #118: DUTCH NEOCLASSICAL MARQUETRY INLAID SATINWOOD SECRÉTAIRE A ABATTANT**

The gray St. Anne marble top above a frieze drawer with egg & dart band & a fall-front centered by bow knotted floral spray, the base containing 2 drawers.

Estimate: \$2,000 - \$4,000



**Lot #119: PAIR OF DIRECTOIRE-STYLE CARVED & GRAY PAINTED BERGERES A LA REINE**

Estimate: \$300 - \$500



**Lot #120: TWO SIMILAR LOUIS XV CARVED BEECHWOOD FAUTEUILS EN CABRIOLET**

With flower carved crests, padded arms & cabriole legs surmounted by florettes

Estimate: \$1,500 - \$2,000



**Lot #121: SET OF SIX LOUIS XVI-STYLE CARVED WALNUT CHAISES A LA REINE**

Each arched nailed leather backrest with molded borders, the balloon shaped seats on top fluted legs surmounted by discs.

Estimate: \$2,500 - \$3,500



**Lot #122: ITALIAN BAROQUE STYLE CARVED CREAM PAINTED & PARCEL-GILT MIRROR**

The shaped plate within a molded frame painted with flowers with pierced shell & flower crest & apron; 40 in. x 21 in.

Estimate: \$400 - \$600



**Lot #123: SCANDANAVIAN BLUE & CREAM PAINTED & CARVED SETTEE**

The triple paneled back with serpentine floral carved cresting, the seat on laterally splayed legs; 77 in. long.

Estimate: \$1,000 - \$1,500



**Lot #124: PAIR OF CONTINENTAL WALNUT SIDE CHAIRS**

Each dipped top rail above solid baluster splat the upholstered seat on cabriole legs ending in pad feet.

Estimate: \$600 - \$800



**Lot #125: DUTCH ROCOCO MARQUETRY INLAID ARMCHAIR**

With bird & vine work inlay.

Estimate: \$200 - \$400



**Lot #126: FRENCH PROVINCIAL FRUITWOOD ARMOIRE**

Enclosed by a pair of shaped fielded panel doors with vertical pierced metal lock plates; cresting lacking; height: 7 ft. 4 in.

Estimate: \$700 - \$900





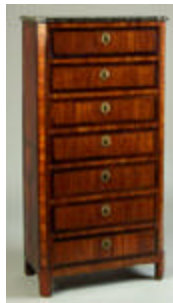
**Lot #127: PAIR OF REGENCE-STYLE CARVED WALNUT FAUTEUILS A LA REINE**

Each with flower carved cartouche back, padded arms, serpentine seats & cabriole legs.  
Estimate: \$300 - \$500



**Lot #128: CHINESE INLAID BLACK LACQUER PANEL MOUNTED AS A LOW TABLE**

Depicting ladies in a garden; 16 3/4 in. x 51 in. x 21 1/2 in.  
Estimate: \$700 - \$900



**Lot #129: LOUIS XVI INLAID TULIPWOOD & KINGWOOD SEMAINIERE WITH GRAY MOTTLED MARBLE TOP**

The canted top above 7 drawers with diagonal checkered stringing & fitted with gilt metal ribbon tied key escutcheons; 53 1/4 in. x 26 1/2 in.  
Estimate: \$2,000 - \$3,000



**Lot #129A: PAIR OF ITALIAN NEOCLASSICAL MARQUETRY-INLAID SIDE CHAIRS**

Each curved top rail with urn, griffens and vinework above solid vinework-inlaid splat; the D-shaped seats with dot inlay and raised on sabre legs.  
Estimate: \$400 - \$600



**Lot #130: LOUIS XVI-STYLE GILT METAL MOUNTED TABLE A OUVRAGE WITH FITTED CARRARA MARBLE TOP**

The oval top with pierced gallery above a drawer & raised on splayed legs joined by kidney-shaped shelf; 27 3/4 in. x 19 1/2 in. x 13.  
Estimate: \$700 - \$900



**Lot #131: LOUIS XV-STYLE FLORAL MARQUETRY  
INLAID BUREAU PLAT**

The cross banded 1/4 veneered top above 3 frieze drawers & raised on cabriole legs fitted with foliate knee mounts and sabots. 29 3/4 in. x 54 in. x 31 1/2 in.

Estimate: \$2,000 - \$4,000



**Lot #132: LOUIS XVI INLAID TULIPWOOD  
HANGING THREE-SHELF OPEN  
ENCOIGNURE**

With 3 graduated bow fronted shelves; 33 in. x 26 1/4 in. x 17 1/4 in.

Estimate: \$1,200 - \$1,400



**Lot #133: LOUIS XVI-STYLE GILT-METAL  
MOUNTED MAHOGANY VITRINE TABLE**

The rectangular hinged top with beveled glass panel, on square tapered legs joined by H-stretcher; 31 in. x 29 1/4 in. x 18 1/2 in. From St. Mary's Convent, Peekskill, NY.

Estimate: \$400 - \$600



**Lot #134: LOUIS XV GILT METAL MOUNTED  
KINGWOOD TABLE A OUVRAGE WITH FITTED  
CARRARA MARBLE TOP**

The tray top with canted corners above 3 drawers, one with gilt metal key escutcheon on slender cabriole legs ending in foliate sabots; 29 in. x 16 1/4 in. x 11 1/4 in.

Estimate: \$1,500 - \$2,500



**Lot #135: ITALIAN NEOCLASSICAL PAINTED WOOD SIDE CHAIR**

With oval cane back & seat, the crest carved with Mercury's & beading & painted with laurel carving; the seat carved with steer skull & husk swags, on tapered fluted legs.

Estimate: \$800 - \$1,200



**Lot #136: LOUIS XV-STYLE GILT METAL MOUNTED MARQUETRY INLAID TULIPWOOD TABLE A ECRIRE**

The top with gold tooled dark green leather panel above a pull out slide & a fitted writing drawer with gilt scroll sabots; 29 3/4 in. x 17 1/2 in. x 12 1/2 in. Estimate: \$700 - \$900



**Lot #137: LOUIS XVI-STYLE FLORAL MARQUETRY INLAID ROSEWOOD WORK TABLE**

The hinged top opening to a bird's eye veneered interior & a mirror, on tapered legs joined by curule stretcher; 28 3/4 in. tall.

Estimate: \$250 - \$450



**Lot #138: ITALIAN BAROQUE WALNUT INLAID CHEST-OF-DRAWERS**

The serpentine fronted top with marble panel above 3 bow fronted drawers with gilt metal foliate cast pulls, on bun feet; 32 1/2 in.

Estimate: \$800 - \$1,200



**Lot #139: LOUIS XVI GILT METAL-MOUNTED INLAID KINGWOOD SIDE CABINET WITH MOTTLED GRAY MARBLE TOP**

With canted corners enclosed by a pair of 1/4 veneered doors with ribbon tied key escutcheons within checkered band, on flute inlaid legs ending in box casters; 28 1/4 in. x 30 1/2 in. x 13 1/2 in.

Estimate: \$1,800 - \$2,200





**Lot #140: LOUIS XV-STYLE GILT METAL MOUNTED KINGWOOD TABLE A ECRIRE**

The 1/4 veneered top above a pull out slide, lateral fitted writing drawer & 2 other drawers, on cabriole legs ending in foliate sabots; 28 in. x 12 in. x 9 1/2 in.

Estimate: \$400 - \$600



**Lot #140A: LOUIS XV PROVINCIAL BEECHWOOD FAUTEUIL DE BUREAU**

Carved and shaped cresting rail above a leather upholstered back and seat joined together by out scrolled arms raised on four cabriole legs

Estimate: \$600 - \$800



**Lot #141: LOUIS XV CARVED GILTWOOD MIRROR**

The arched plate within narrow lattice incised frame with entwined leaves & flower heads. 35 in. x 22 in.

Estimate: \$700 - \$900



**Lot #142: LOUIS XVI-STYLE GILT METAL MOUNTED PARQUETRY INLAID VIDE POCHE**

The tray top with diamond lattice surface & a gilt metal edge, on lyre-form supports joined by an oval galleried shelf; 29 1/2 in. x 23 1/4 in. x 12 3/4 in.

Estimate: \$2,000 - \$3,000



**Lot #143: CONTINENTAL NEOCLASSICAL-STYLE CARVED PAINTED & SILVERED WOOD CENTER TABLE WITH MARBLE TOP**

The frieze carved with ribbon bound tiered laurel fillets, raised on tapered paneled legs carved with pendant bell flowers; 31 3/4 in. x 70 in. x 35 in.

Estimate: \$500 - \$700



**Lot #144: LOUIS XV-STYLE GILT METAL MOUNTED MARQUETRY INLAID KINGWOOD GAMES TABLE**

The rectangular folding & swivel top with rose head medallion on 1/4 veneered ground & opening to a green baize lined playing surface, raised on cabriole legs; 29 1/2 in. x 27 1/2 in. x 20 in.

Estimate: \$1,500 - \$2,500



**Lot #145: LOUIS XVI-STYLE CARVED PAINTED & PARCEL-GILT CONSOLE TABLE**

The rectangular top above a fluted drawer & raised on bell flower tapered legs; 29 3/4 in. x 42 1/2 in. x 22 in.

Estimate: \$500 - \$700



**Lot #146: LOUIS XVI-STYLE CARVED GILTWOOD CONSOLE TABLE**

The canted top with leaf tip edge above a rod & oval frieze on square tapered legs; 33 1/4 in. x 48 in. x 22 in.

Estimate: \$500 - \$700



**Lot #147: PAIR OF LOUIS XVI CARVED BEECHWOOD FAUTEUILS EN CABRIOLET**

Each with arched back, padded arms & fluted legs, upholstered in velvet.

Estimate: \$700 - \$900



**Lot #148: REGENCE-STYLE WALNUT FAUTEUIL A LA REINE**

The back with serpentine top rail & the arms with leaf carved terminals, raised on cabriole legs joined by waved X-stretchers.

Height: 81 1/2 in.

Estimate: \$800 - \$1,200



**Lot #148A: REGENCE-STYLE CARVED GILTWOOD MIRROR**

With foliate strap work frame; 59 1/2 in. x 39 in.

Estimate: \$400 - \$600



**Lot #149: CHINESE CABINET**

Constructed of elm, traces of lacquer; with 3 drawers & a pair of doors; 34 in. x 50 in. x 23 in.

Estimate: \$800 - \$1,200



**Lot #150: PAIR OF CHINESE SIDE CHAIRS**

With traces of old lacquer finish, approx. 39 1/4 in. x 22 in. x 16 3/4 in.

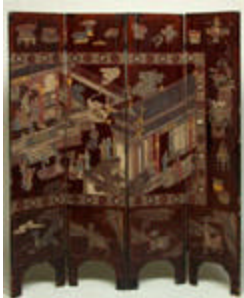
Estimate: \$300 - \$500



**Lot #151: CHINESE BLACK GROUND COROMANDEL TABLE SCREEN**

The one side with figures in a garden, the reverse with landscape; height: 32 in.

Estimate: \$400 - \$600



**Lot #152: CHINESE MAROON LACQUER COROMANDEL FOUR-FOLD SCREEN**

Depicting figures in gardens with character panels verso. 71 3/4 in. x 64 in.

Estimate: \$700 - \$900



**Lot #153: JAPANESE ASSEMBLED WROUGHT IRON MOUNTED TWO PART TANSU**

The one section containing 2 drawers & a door, the other section enclosed by a pair of doors opening to 2 long drawers, each section flanked by carrying handles; 40 1/2 in. x 37 1/2 in. x 16 3/4 in.

Estimate: \$800 - \$1,200



**Lot #154: TWO FAMILLE ROSE PORCELAIN SMALL PUNCH BOWLS & A CANTON BLUE & WHITE OVAL RETICULATED BOWL**

The larger bowl with figural reserves on blue & white vinework ground, the other with peony cherry blossom & maple branches, the basket with lake view. Diameters: 11 in. & 9 1/4 in. Length of basket: 10 1/4 in.

Estimate: \$125 - \$175



**Lot #155: CHINESE EXPORT PORCELAIN FAMILLE ROSE SOUP PLATE & A SPHERICAL TEAPOT**

The plate in enamel decoration with a bird, flowers & fence (9 in. diam.); the pot with white rabbit crouching on blue rock work. Height of pot: 4 3/8 in.

Estimate: \$200 - \$300



**Lot #156: SIX CHINESE EXPORT PORCELAIN  
GRADUATED BOWLS, TWO  
STANDS, COVERED DISH & FOUR ENGLISH TRANSFER  
DECORATED  
CUPS & SAUCERS**

The bowls with floral decoration, one with sepia rondels of towers, the stands with brown wave bands, the cups & saucers with chinoiserie figural bands, the covered Famille Rose dish with giltwood molded edge & 7 part interior. Diameter of covered dish 11 in.  
Estimate: \$150 - \$250



**Lot #157: JAPANESE IMARI OVAL CHARGER**

The surface with 2 scenes of figures at a playing board or a group of 4 scholars, the border with lobed & quatrefoil panels on shell decorated ground; with wirework hanging mount; 21 in. long.  
Estimate: \$800 - \$1,200



**Lot #158: JAPANESE BLUE & WHITE ARITA VASE**

Painted with 2 hawks, pine boughs & peony branches; 35 1/2 in. tall.  
Estimate: \$400 - \$600



**Lot #159: JAPANESE ENAMELED & LACQUERED  
PORCELAIN LARGE VASE**

Of pear form with fish or boat panel on black or red ground chrysanthemum & autumn foliage surround. Height: 24 1/4 in.  
Estimate: \$300 - \$500



**Lot #160: NEST OF THREE JAPANESE IMARI BOWLS**

With crane decoration & a larger Imari bowl with fan & crane decoration. Diameters: 7 1/4 in. to 12 1/4 in.  
Estimate: \$300 - \$400





**Lot #161: JAPANESE IMARI SHALLOW BOWL**  
With inverted rim & decorated with overlaid "Obi"  
panels. 12 in. diameter.  
Estimate: \$200 - \$300



**Lot #162: JAPANESE SIGNED WHITE  
EARTHENWARE (SATSUMA) TRIPOD VASE**  
The ovoid bowl with shaped figural panels beneath a  
lappet border, gilt overlay feet; 5 3/4 in. tall.  
Estimate: \$200 - \$300



**Lot #163: TWO JAPANESE IMARI BOWLS, ON  
OCTAGONAL PLATE & A CHINESE  
IMARI BOWL**  
The bowls variously decorated in iron red & blue &  
green with cranes, song bird & flowers, an octagonal  
plate with bird in flight, lake view & mountain.  
Diameters: 5  
7/8 in., 5 3/4 in., & 7 1/4 in. Width of plate: 7 3/4  
in.  
Estimate: \$100 - \$150



**Lot #164: JAPANESE BRONZE ARCHAISTIC VASE  
ON STAND**  
With bird & foliate panels in relief, vine & bird  
handles, tripod legs & attached stand; 16 in. tall.  
Estimate: \$250 - \$350



**Lot #165: JAPANESE BRONZE ARCHAISITIC COVERED CENSER ON ATTACHED TRIPOD STAND**  
With calligraphic panels, shi shi handles & cover, tiao tieh legs; 24 in. tall.  
Estimate: \$500 - \$700



**Lot #166: JAPANESE SCROLL PAINTING**  
Watercolor on paper, approx. 43 3/4 in. x 34 1/2 in., showing a reclining scholar resting on a tiger skin, and 2 attendants; ivory tipped roller.  
Estimate: \$300 - \$500



**Lot #167: TWO JAPANESE CARVED FIGURES OF A MAN WITH BROOM & GOURD & A CHILD CARRYING A SACK ON BRASS BASE & A GOAN CARVED GROUP OF A MUSICIAN & TWO CHILDREN.**  
Heights: 4 1/2 in., 5 1/4 in., 5 7/8 in.  
Estimate: \$400 - \$600



**Lot #168: TWO BRONZE SEATED FIGURES & A BRASS CENSER**  
The larger a nobleman with traces of gilding, the smaller a bearded scholar with left elbow resting on a stool, fitted wood stand; the censer with growling Fu dog cover; heights: 13 1/4 in. & 4 in.  
Estimate: \$500 - \$700



**Lot #169: CHINESE SILKWORK PICTURE WITH GOLD THREAD**  
Showing a bird in a garden pavilion receiving visitors & with attendants; ebonized wood frame. 29 1/2 in. x 47 1/2 in. From St. Mary's Convent, Peekskill, N.Y.  
Estimate: \$200 - \$300



**Lot #170: CHINESE ANCESTRAL PORTRAIT**

Gouache on paper, 59 1/4 in. x 34 in. (sight), showing a group of 12.

Estimate: \$700 - \$900



**Lot #171: CHINESE ROSE MEDALLION GOLD GROUND RECTANGULAR COVERED BOX**

**BOX**

With figure & floral reserves; together with a 10 3/4 in. plate. (2 pcs).

Estimate: \$250 - \$350



**Lot #172: CHINESE CARVED FIGURE OF HOTEI**

Together with a figural carved scent bottle & stopper & a pair of soft stone Fu dog chops; the tallest: 4 in.

Estimate: \$125 - \$175



**Lot #173: PAIR OF CINNABAR LACQUER VASES WITH CARVED WOOD OVERLAY**

With spherical bowls, beaker neck, relief figural panels; together with a 5 1/4 in. cinnabar lacquer bowl & a 3 piece picnic set. (approx. 4 pcs)

Estimate: \$700 - \$900



**Lot #174: THREE CHINESE CLOISSONNE ENAMEL ON GILT METAL OR BRONZE VASES**

The largest bronze of pear-form with 5 fully decorated bands, the other two with raised bands; the tallest 14 in.

Estimate: \$200 - \$400



**Lot #175: PAIR OF CHINESE BLUE GLAZED POTTERY SMALL FIGURES OF FU DOGS**

With forepaw resting on a pup or ball, on open rockwork bases. 7 1/2 in. x 4 1/2 in.

Estimate: \$200 - \$300



**Lot #176: PAIR OF CHINESE ORANGE-GLAZED BALUSTER-FORM VASES**

Each with double concentric ring mark in underglaze blue; 11 5/8 in. tall.

Estimate: \$300 - \$500



**Lot #177: CHINESE EXPORT BLACK LACQUER BOX**

The molded lid with gilt butterfly & foliate rondel; together with a pair of export lacquer rectangular lidded boxes with oval script monograms; width of largest: 18 1/4 in. From the Estate of Frederick W.

Hughes.

Estimate: \$125 - \$175



**Lot #178: PAIR OF CAFE AU LAIT GLAZED EARTHENWARE BARREL-FORM GARDEN SEATS**

Decorated in ochre with exotic birds & S-hook fretwork.

Height: 17 1/2 in., Diameter: 12 in.

Estimate: \$200 - \$400



**Lot #179: CHINESE FAMILLE ROSE BLACK GROUND JARDINIERE**

With millefiori decoration; 11 in. tall.

Estimate: \$250 - \$350



**Lot #180: SET OF FOURTEEN ENGLISH SILVER TABLESPOONS IN THE KING'S PATTERN**

Marks for CB & S within a shield, Sheffield, 1962 & 1963; together with 3 silver plated serving forks & 2 spoons & a boxed set of 12 Walker & Hall silver plated fruit knives & forks with reeded handles.

Estimate: \$400 - \$600



**Lot #181: GORHAM SILVER FLATWARE SERVICE IN THE BUTTERCUP PATTERN**

Comprising: 18 hollow handled dinner knives, 12 hollow handled lunch knives, 18 hollow handled butter knives, 30 dinner forks, 36 dessert forks, 24 oyster forks, 12 cream soup spoons, 14 table spoons, 12 iced tea spoons, 16 demitasse spoons & 36 teaspoons. Approx. 228 pcs.

Estimate: \$2,000 - \$3,000



**Lot #182: INTERNATIONAL SILVER PLATED PART FLATWARE SERVICE**

Comprising: 10 dinner knives, 9 flat handled butter knives, 10 dinner forks, 10 dessert forks, 16 soup spoons, 12 iced tea spoons, 28 tea spoons, 1 cake server, 1 slotted spoon, 1 serving spoon, 1 sugar shell & 2 butter servers. (approx 101 pcs).

Estimate: \$100 - \$200



**Lot #183: MISCELLANEOUS FLATWARE ARTICLES**

Comprising: a boxed set of 12 English mother-of-pearl handled fruit knives & 12 forks, by C.J.A. & Sons; boxed 2 piece set of faux ivory handled fish servers, with marks of T.V.B. within a shield, Sheffield, 1896; English silver handled faux ivory page cutter with marks for W.W. Birmingham, 1895; 5 Reed & Barton silver servers; 6 individual match box holders; 4 French silver plated table spoons; 5 Wm. Rogers bouillon spoons & 8 mother-of-pearl cheese knives.

Estimate: \$250 - \$350





**Lot #184: AMERICAN SILVER FLATWARE SERVICE**

Wm. Durgin Co., in the Lenox pattern, patented 1912 comprising: 12 hollow-handled dinner knives, 12 dinner forks, 12 flat handled butter knives, 12 teaspoons, 12 table spoons & 3 serving spoons (approx. 63 pcs).  
Estimate: \$700 - \$900



**Lot #185: INTERNATIONAL SILVER PLATED U.S. NAVY SHIP OVAL PLATTER, "USS ARIZONA BB 39".**

Length: 14 1/2 in.  
Estimate: \$200 - \$400



**Lot #186: GERMAN PLATED COCKTAIL SHAKER IN THE FORM OF A ZEPPELIN**

Impressed O.R.G.M.; the ovoid bowl with 4 Ft. & hook with 4 spoons, the screw off lid opening to a removable strainer & shaker with screw off spout.  
Estimate: \$800 - \$1,200



**Lot #187: PAIR OF BAROQUE-STYLE BRASS CANDLESTICKS**

With broad drip pans & dome base together with a bell metal capstan stick. Heights: 9 in. & 8 3/4 in.  
Estimate: \$125 - \$175



**Lot #188: GROUP OF ELEVEN AMERICAN SILVER PLATED TABLE ARTICLES & A FRENCH PEWTER VASE**

Including a 16 1/4 in. hot water kettle on warming stand, 3 oval trays, a circular well and tree platter, 2 handled vegetable dish, wood handled silent butler, crumb scoop, 12 in. circular iris decorated tray, a hot water jug with raffia handle & wood handled warming pan.  
Estimate: \$200 - \$400



**Lot #189: THREE AMERICAN SILVER SMALL TABLE ARTICLES**

Comprising: a Stieff stemmed 5 1/2 in. compote with repousse chrysanthemum band, a Gorham 8 1/2 in. open work dish & a 7 1/4 in. basket with arch handle retailed by Spaulding & Co; approx. 18 ozs.

Estimate: \$300 - \$500



**Lot #190: SIX AMERICAN SILVER SMALL TABLE ARTICLES**

Comprising: Poole creamer & sugar bowl; Gorham Stratford pattern 7 in. dish; Meriden Britannia 6 1/2 in. footed dish; Meriden 6 1/2 in. candy basket with arch handle: & an Ensko Kiddush cup & cover; approx. 36 ozs.

Estimate: \$250 - \$350



**Lot #191: GROUP OF SIX ENGLISH SILVER PLATED ARTICLES**

Comprising: a W & H 28 in. oval 2 handled tray; a 25 in. cocktail tray; Goldsmiths & Goldsmiths 2 part vegetable dish; a W & A teapot & matching coffee pot, a shell form muffineer; together with an American 15 1/2 in. pie crust tray. Approx. 7 pcs.

Estimate: \$400 - \$600



**Lot #192: TIFFANY FAVRILE BLUE GLASS PEAR-FORM RIBBED VASE**

Incised "1540-5395 N L.C. Tiffany Inc. Favrile," 12 in. tall

Estimate: \$2,000 - \$3,000



**Lot #193: BANK CHATILLON SILVER SIX-PIECE TEA & COFFEE SERVICE & MATCHING TRAY**

Comprising a kettle on warmer, stand, 2 pots, creamer, covered sugar bowl & a waste pail of lobed gourd form, engraved with lambrequin band & a 29 1/2 in. 2-handled tray; marked sterling (approx. 332 ozs). Height of kettle: 15 1/4 in.

Estimate: \$5,000 - \$7,000



**Lot #194: THEODORE B. STARR SILVER TWO-HANDLED SMALL TUREEN & COVER**

The underside engraved with initials in script & dated 1894; repousse & chased with flowers & scrolls; on pierced base & 4 feet. (approx. 49 ozs). Length over handles: 11 1/4 in. Estimate: \$800 - \$1,200



**Lot #195: PAIR OF ENGLISH SILVER BOAT FORM SALTS**

Birmingham, 1927, with engraved garlands; together with 6 P.H. Locklin & Sons small salts & 2 spoons with cherub head terminals. (10 pcs). Length of English salts: 3 7/8 in. Estimate: \$200 - \$200



**Lot #196: GORHAM SILVER MONOGRAMMED FOUR-PIECE TEA SET**

Inscribed "February 16, 1901", comprising: an urn form pot, helmet form creamer, covered sugar bowl & waste pail; with bead-and-reel rims & square bases. approx. 55 ozs. Height of teapot: 8 3/4 in. From St. Mary's Convent, Peekskill, New York. Estimate: \$600 - \$800



**Lot #197: RUSSIAN SILVER FIVE-PIECE TEA & COFFEE SERVICE**

Marked with a profile facing right & 88, within an oval: comprising: 2 pots, A warming stand, creamer, covered sugar bowl & waste pail, each ovoid reeded bowl on circular foot, the covers with floral knops, approx. 126 ozs. Heights of pots: 10 1/4 in. & 7 3/4 in. Estimate: \$2,000 - \$3,000



**Lot #198: TWO AMERICAN SILVER TABLE ARTICLES**

Comprising: a Meriden Britannia Company 10 in. reproduction of an English 1671 bowl & a Reed & Barton 12 in. water lily pad oblong dish; approx. 44 ozs. Estimate: \$500 - \$700



**Lot #199: AMERICAN SILVER TWO-HANDLED CUP, RETAILED BY J.E. CALDWELL & CO.**

Inscribed with dates from 1913-1915; with leaf tip edges & incised borders; approx. 20 ozs. From St. Mary's Convent, Peekskill, New York. Estimate: \$300 - \$400



**Lot #200: ENGLISH INCISED PEWTER BASIN**

The everted rim initialed I.L.R. flanked by tulip heads & birds; diameter: 16 1/2 in.

Estimate: \$100 - \$200