

Lots 201 - 300



Lot #201: ENGLISH SILVER PLATED INK STAND

Marks of J.D. & S Crown & EP, the stand centered by a stag flanked by lidded glass wells; on scroll feet. 6 1/4 in. x 11 in.
Estimate: \$200 - \$300



Lot #202: CONTINENTAL SILVER & SILVER GILT OVAL INKSTAND

Centered by a gilt dolphin-lidded box flanked by a well & a sander, pierced gallery, on kneeling sphinx feet. Length: 13 in.
Estimate: \$1,500 - \$2,500



Lot #203: PAIR OF ENGLISH SILVER PLATED TABLE CANDLESTICKS

With angular tapered stems, urn nozzles & gadroon bases; 11 1/2 in. tall. From St. Mary's Convent, Peekskill, New York.
Estimate: \$400 - \$600



Lot #204: PAIR OF ENGLISH SILVER PLATED TABLE CANDLESTICKS

With part fluted urns, stems & bases; together with a pair of English silver plate sticks with pear form stems & square bases. Heights: 11 1/4 in. & 6 1/4 in.
Estimate: \$150 - \$250



Lot #205: CONTINENTAL SILVER FOUR-PIECE TEA & COFFEE SERVICE

Marks crowned RC assay marks & rosetti; comprising: 2 pots, covered sugared bowl & creamer; of faceted pear form, repoussé with gadrooning, hearts, swags & fleur de lis. Total weight: approx. 78 ozs.
Estimate: \$1,600 - \$2,400



Lot #206: REED & BARTON ART NOUVEAU SILVER SIX-PIECE TEA & COFFEE SERVICE

The undersides engraved, "Bertha S. Robbins, October 16, 1903," comprising a kettle on warming stand, 2 pots, creamer, covered sugar bowl & waste pail, each repousse with poppies in bud & open. (approx. 159 ozs). Height of kettle: 11 1/2 in.

Estimate: \$3,000 - \$5,000



Lot #207: MEXICAN SILVER STEMMED COMPOTE & A CONTINENTAL SWAN FORM GLASS BOWL WITH SILVER HEAD & MOVEABLE WINGS.

Compote: 7 3/4 in. tall and approx. 32 ozs.

Estimate: \$250 - \$350



Lot #208: GOLD & SILVER JEWELRY

Including a 7 in. chain bracelet, another chain bracelet with shell pendant, 4 bangles, Tiffany & Co. gold brooch, ladies ring with blue hard stone (chipped), a clasp with pendant signet, 2 stick pins; 4 bangles,

Israeli enamel decorated pendant with chain, a brooch & ring with hardstones by Carpenter, Danish 3 flower brooch, enameled ring dated '45 & a chain with green jade pendant. From St. Mary's Convent, Peekskill, New York.

Estimate: \$200 - \$300



Lot #209: SEVEN GEORG JENSEN SILVER JEWELRY ARTICLES

Comprising a 16 1/2 in. necklace, 6 1/2 in. link bracelet, 7 in. charm bracelet with 6 charms (cross, shell, viking ship, wheat sheaf, 5 crosses & snail); ring with cabochon stone, grape stick pin oval floral

brooch & horse-head brooch. From St. Mary's Convent, Peekskill, New York.

Estimate: \$200 - \$300



Lot #210: TWO AMERICAN GOLD COINS

Comprising an 1886 five dollar piece, better than extremely fine (45) & a 1913 five dollar piece, extremely fine (40).

Diameter of each: 3/4 in. From St. Mary's Convent, Peekskill, New York.

Estimate: \$200 - \$300



Lot #211: GROUP OF AMERICAN SILVER FLATWARE

Comprising: 21 Whiting dinner forks, 6 Gorham table spoons, 8 Wallace teaspoons patented 1898, 8 Alvin ice cream spoons with beaded border, 5 Gorham lunch forks, 1 Gorham ladle chased with a maiden, 1 sauce spoon retailed by Tilden Thurber & Co., 1 Gorham tomato server, 2 serving spoons & 3 assorted teaspoons; together with 6 coin silver teaspoons by Evans & 6 other spoons, 9 Tiffany & Co. silver plated lunch forks, 11 Embassy teaspoons, 12 Holmes & Edwards oyster forks & 12 other items. From St. Mary's Convent, Peekskill, New York. Estimate: \$300 - \$400



Lot #212: PAIR OF BOHEMIAN AMBER OVERLAY GLASS DECANTERS & STOPPERS

Together with 2 American silver labels, "Scotch" & "Rye". height: 13 1/2 in. Estimate: \$125 - \$175



Lot #213: TWO STEUBEN GLASS TABLE ARTICLES

Comprising a single rust ashtray & a dish with snail handle; 8 3/4 in. & 5 in. diameter of dish. Estimate: \$100 - \$150



Lot #214: BUCELLATI SILVER PICTURE FRAME, GEORGE JENSEN SILVER CUP

& AN ENGLISH SILVER GEORGE VI CORONATION DISH
The frame: 7 3/4 in. x 6 1/4 in.; the cup height: 2 3/4 in.; the dish diameter: 4 1/2 in. Estimate: \$200 - \$300



Lot #215: TWELVE SILVER BREAD & BUTTER PLATES & TWELVE ASSEMBLED SILVER PEPPERETTES

The plates with florette & C-scroll edges; 8 pepperettes by Wallace, 4 English pepperettes with marks for CS/RS, London, 1961. Approx. 92 ozs. Diameter of plates: 6 3/8 in., Height of pepperettes: 4 3/4 in. & 5 1/4 in. Estimate: \$400 - \$600



Lot #216: TIFFANY & CO. SILVER FRUIT BOWL

With mark used between 1891 & 1902; the everted rim cast with mums & scroll work; approx. 17 ozs, 10 in. diameter.
Estimate: \$800 - \$1,000



Lot #217: TWO CONTEMPORARY LALIQUE CRYSTAL VASES

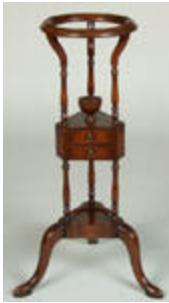
The one of beaker form with turned spade shaped leaves, the other of globe form with opalescent iris form handles, each engraved Lalique France; together with a Baccarat triangular vase. Diameters: 6 in. & 9 in.

Estimate: \$300 - \$400



Lot #218: SET OF SIX VICTORIAN SILVER SALTS WITH BLUE GLASS LINERS

Marks for G.F.P., London, 1844; each pierced & chased with pagodas & raised on tripod feet; each 3 1/2 in. diameter.
Estimate: \$500 - \$700



Lot #219: GEORGE III STYLE MAHOGANY BASIN STAND

The molded ring on tripod supports joined by a 2 drawer triangular shelf, on cabriole legs; 31 1/2 in. tall.

Estimate: \$400 - \$600



Lot #220: REGENCY INLAID MAHOGANY COMMODOE

With outset ringed uprights inlaid with false drawers; 18 1/2 in. x 19 1/2 in. x 14 1/2 in.

Estimate: \$400 - \$600



Lot #221: SET OF SIX LATE GEORGE III CARVED MAHOGANY DINING CHAIRS

Including 2 armchairs, with pierced x-form horizontal splats, upholstered seats & reeded front legs.

Estimate: \$1,800 - \$2,200



Lot #222: GEORGE III MAHOGANY CARD TABLE

The folding top with outset corners above a plain frieze & raised on acanthus carved cabriole legs ending in claw & ball feet; 28 1/2 in. x 34 1/2 in. x 16 1/4 in.

Estimate: \$3,000 - \$5,000



Lot #223: GEORGE III INLAID MAHOGANY BOW-FRONTED CHEST-OF-DRAWERS

The cross banded top above four cock-beaded drawers fitted with brass oval drop handles & raised on splayed bracket feet.

Estimate: \$1,000 - \$1,500



Lot #224: REGENCY CARVED GILTWOOD CONVEX MIRROR WITH EAGLE CRESTING

The ball applied frame with eagle cresting flanked by acanthus scroll work, ebonized reeded inner borders; 48 in. x 27 1/2 in.

Estimate: \$2,000 - \$4,000



Lot #225: GEORGE III MAHOGANY SECRETAIRE BOOKCASE

The dentil molded cornice above a pair of glass paned doors, the fall-front secretaire drawer opening to a fitted interior, above 3 cock beaded drawers with brass drop handles, bracket feet; 85 1/2 in. x 42 in. x 21 3/4 in.

Estimate: \$3,000 - \$5,000



Lot #226: CHIPPENDALE-STYLE CARVED GILTWOOD MIRROR

The upright plate within an architectural frame with openwork pagoda crest, scroll work base; 63 in. x 32 in.

Estimate: \$800 - \$1,200



Lot #227: PAIR OF GOTHIC WINDSOR ARMCHAIRS

Each pointed back with pierced lancets, the seat on cabriole legs joined by a concave-fronted stretcher.

Estimate: \$800 - \$1,200



Lot #228: GEORGE III OAK CORNER CHAIR

The U-shaped top rail above pierced baluster splats, the drop-in seat on square legs joined by X-stretcher.

Estimate: \$300 - \$500



Lot #229: YEW & ELM WINDSOR ARMCHAIR

The hoop back with 9 spindles, the shaped seat on turned legs joined by convex stretcher.

Estimate: \$250 - \$350



Lot #230: PAIR OF REGENCY-STYLE CREAM PAINTED CURULE STOOLS

Each with red upholstered seat & carved rosettes. 17 3/4 in. x 20 in.

Estimate: \$300 - \$500



Lot #231: GEORGE III MAHOGANY PEDESTAL DESK

The tooled leather top above three drawers & each pedestal containing three drawers raised on high bracket feet. 29 1/2 in. x 4 Ft. x 25 3/4 in.

Estimate: \$1,800 - \$2,200



Lot #232: GEORGE I-STYLE WALNUT ARMCHAIR

The shaped crest above a vase-shaped back splat above a needlework slip seat, raised on claw & ball feet.

Estimate: \$300 - \$500



Lot #233: ENGLISH PINE KITCHEN TABLE & SIX CHAIRS

The table with overhang top above a drawer & turned legs; the chairs with shaped seats on turned legs; 30 1/2 in. x 33 1/2 in. x 47 1/2 in.

Estimate: \$500 - \$700



Lot #234: PAIR OF GEORGE III MAHOGANY SIDE CHAIRS WITH UPHOLSTERED BACK & SEATS

With serpentine top rail & seat, raised on molded legs, worked in flame stitch.

Estimate: \$700 - \$900



Lot #235: ENGLISH ART NOUVEAU OAK ARMOIRE WITH COPPER REPOUSSE PANELS

Enclosed by a beveled mirror glass door flanked by stylized pomegranate copper panels & fielded panels, the base containing a drawer, bracket feet; 6 Ft. 5 in. x 45 1/2 in. x 19 1/2 in.

Estimate: \$700 - \$900



Lot #236: CHIPPENDALE CARVED GILTWOOD MIRROR

The horizontal plate within molded frame carved with foliate scrolls & shell work. Provenance: Francis Draper, London. 22 3/4 in. x 25 in.

Estimate: \$1,000 - \$1,500



Lot #237: EDWARDIAN MARQUETRY INLAID LADIES WRITING TABLE BOOKCASE IN TWO PARTS

The break arch upper part with bow knotted drapery swags & a pair of glazed doors with pointed arch bars above drawers & pigeon holes, the lower part with two drawers on square tapered legs joined by domed X-stretcher; 78 1/2 in. x 40 1/2 in. x 20 in.

Estimate: \$2,500 - \$4,500



Lot #238: GEORGE III MAHOGANY INLAID OAK CHEST-OF-DRAWERS

The case with 1/4 round fluted corner pilasters, raised on bracket feet. 34 1/2 in. x 44 in. x 20 1/2 in.

Estimate: \$800 - \$1,200



Lot #239: CHIPPENDALE-STYLE CARVED GILTWOOD MIRROR

The frame carved with flame ornament, C-scrolls, & flower heads, pierced cresting & apron; 53 in. x 31 in.

Estimate: \$800 - \$1,200



Lot #240: GEORGE III INLAID MAHOGANY BOW-FRONTED COMMODE

With hinged lid, fruitwood stringing & square tapered legs; 18 1/4 in. x 16 3/4 in.

Estimate: \$300 - \$500



Lot #241: ENGLISH STAINED PINE TWO-PART DRESSER
The upper part with molded shelves & brass hooks, above 3 drawers & 2 paneled doors, on a plinth; 72 1/2 in. x 49 in. x 18 in.
Estimate: \$500 - \$700



Lot #242: GEORGE III-STYLE CARVED PAINTED & PARCEL-GILT CONSOLE TABLE
The green ground top finely painted with a bird & fruit panel within scroll work border, the flute & paterae carved frieze on tapered bell flower carved legs; 30 1/2 in. x 73 in. x 34 in.
Estimate: \$2,000 - \$4,000



Lot #243: REGENCY MAHOGANY WINE COOLER
Flattened dome hinged cover above tapered paneled case, the interior with wood bottle divisions. 21 1/2 in. x 29 1/2 in. x 22 in.
Estimate: \$1,400 - \$1,800



Lot #244: CHIPPENDALE-STYLE MAHOGANY MIRROR WITH SHAPED CREST & BASE
33 in. x 18 in.
Estimate: \$150 - \$250



Lot #245: GEORGE III-STYLE MAHOGANY BREAKFRONT TWO PART BOOKCASE
The flat fronted upper part enclosed by a pair of brass grill work doors, the breakfront lower part enclosed by four paneled doors; 79 3/4 in. x 53 1/2 in. x 15 in.
Estimate: \$800 - \$1,200



Lot #246: MAHOGANY BUTLER'S TRAY ON STAND

17 1/2 in. x 35 in. x 24 1/2 in.

Estimate: \$200 - \$400



Lot #247: CHIPPENDALE-STYLE CARVED MAHOGANY TILT-TOP TRIPOD TABLE WITH BIRDCAGE SUPPORT

With plain top, urn stem, shell carved legs ending in claw & ball feet; 27 in. tall & 35 in. diameter. From St. Mary's Convent, Peekskill, N.Y.

Estimate: \$400 - \$600



Lot #248: GEORGE III MAHOGANY TILT-TOP TRIPOD TABLE

The plain top on column & spiral fluted vase stem with cabriole legs ending in club feet; 28 1/4 in. tall & 29 1/4 in. diameter.

Estimate: \$600 - \$800



Lot #249: GEORGE III INLAID MAHOGANY PEMBROKE TABLE

The cross banded drop leaves with fruitwood inlay above a frieze drawer & raised on square tapered legs ending in brass box casters; 28 1/2 in. x 20 1/2 in. x 32 in.

Estimate: \$2,000 - \$3,000



Lot #250: GEORGE III MAHOGANY THREE-PART DINING TABLE

With D-shaped ends & a double drop-leaf center section, plain frieze, with 2 extra leaves. Length fully extended approx. 13 Ft., Height: 29 3/4 in., Depth: 47 3/4 in.

Estimate: \$2,000 - \$4,000



Lot #251: QUEEN ANNE-STYLE OAK LOWBOY
The frieze with 2 drawers; raised on turned legs & ending in pad feet, 29 in. x 33 1/2 in. x 21 1/2 in.
Estimate: \$300 - \$500



Lot #252: GEORGE III MAHOGANY LIBRARY ARMCHAIR
With serpentine crest, shaped arms, upholstered seat, canted legs & H-stretcher.
Estimate: \$600 - \$800



Lot #253: LOUIS XV MAHOGANY FIRE SCREEN
With adjustable floral needlework panel, 34 1/2 in. x 18 in.
Estimate: \$300 - \$500



Lot #254: ENGLISH WALNUT REVOLVING BOOK HOLDER
The 4 tiers with slatted sides & with an adjustable hinged book rest at one side; 42 1/2 in. tall.
Estimate: \$800 - \$1,200



Lot #255: NEOCLASSICAL-STYLE BRASS NAILED PAINTED CANVAS THREE PANEL SCREEN
Each panel with serpentine top & decorated with figures, flowers & ribbon work on tan ground; 71 in. x 23 1/2 in.; together with an additional center panel.
Estimate: \$300 - \$500



Lot #256: AMERICAN PADDLE BOAT IN CHOPPY SEA ALONGSIDE TWO-MASTED SHIP BAILING WATER

Oil on canvas, 22 in. x 36 in., indistinctly signed S.K. Bank (?).

Estimate: \$300 - \$500



Lot #257: FRANCIS DAY (1863 - 1942) COLONIAL STREET SCENE

Oil on canvas, 19 1/4 in. x 39 1/4 in. signed lower left "Francis Day A.N.A."

Estimate: \$2,000 - \$4,000



Lot #258: FOX HUNT

Watercolor & pencil on paper, signed lower left "Alken," 10 3/4 in. x 15 in. (sight).

Estimate: \$800 - \$1,200



Lot #259: AUGUSTE LEPERE (1849 - 1918) "MIDI SOUS BOIS"

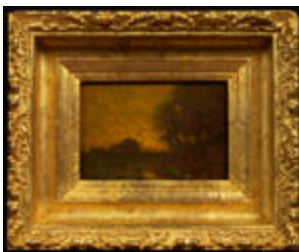
Wood engraving on Japan pelure signed "A. Lepere" and with the artist's chop; matted and framed under glass.

Provenance: Jeannot R. Barr

4 3/4 inches x 6 3/4 inches (sight)

From the Estate of Frederick W. Hughes

Estimate: \$300 - \$500



Lot #260: GEORGE INNESS (1825 - 1894) LANDSCAPE WITH TREES

Oil on panel, 4 in. x 6 1/8 in. with faint signature lower left "Inness."

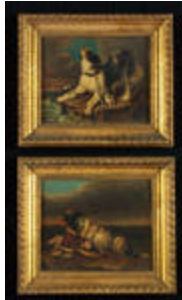
Estimate: \$1,000 - \$1,500



Lot #261: LANDSCAPE WITH MEANDERING RIVER

Oil on canvas, 19 in. x 30 in., signed lower left
"Niemann."

Estimate: \$800 - \$1,200



Lot #262: PAIR OF DOG PAINTINGS

Oil on tin, approx. 6 1/2 in. x 7 7/8 in. each.

Estimate: \$125 - \$175



**Lot #263: "SCENE FROM THE OPERA OF ROBERTO
IL DIAVOLO MLE. JENNY**

LIND AS ALICE & HERR STANDIGL AS BERTRAM"

Watercolor on paper, 8 1/8 in. x 6 3/4 in. (sight). From
the album of Charles Shoettel, dated 1846.

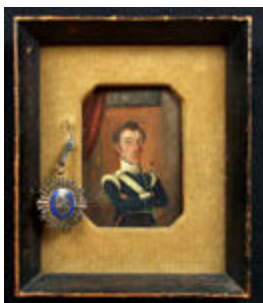
Estimate: \$200 - \$300



**Lot #264: "MISS C. CUSHMAN AS VIOLA & MISS S.
CUSHMAN AS OLIVIA IN TWELFTH NIGHT"**

Watercolor on paper, 5 3/4 in. x 6 7/8 in. (sight). From
the portfolio album of Charles C. Shoettel dated 1846.

Estimate: \$200 - \$300



Lot #265: PORTRAIT OF AN OFFICER

Oil on brass, 5 1/8 in. x 3 1/2 in., matted & framed
with a cast metal & enamel medal of Simon Bolivar.

From the Estate of Frederick W. Hughes.

Estimate: \$125 - \$175



Lot #266: MEDIEVAL SCENE OF A SCHOLAR IN POINTED VAULTED CHAMBER WRITING ON WALL IN FRENCH

Oil on panel, 17 in. x 13 3/4 in.
Estimate: \$200 - \$300



Lot #267: GARI MELCHERS (1860 - 1932) " A WAYSIDE MADONNA"

Etching on paper, matted & framed under glass, inscribed on a tag on verso "To Mrs. Whitney, with a Merry X-mas from Frank Crowinshield 1925". 5 in. x 3 1/2 in. From the Estate of Frederick W. Hughes.
Estimate: \$75 - \$125



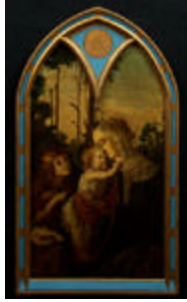
Lot #268: PORTRAIT OF A SAINT

Oil on octagonal panel, 9 1/8 in. x 7 in. From St. Mary's Convent, Peekskill, N.Y.
Estimate: \$400 - \$600



Lot #269: MADONNA & CHILD

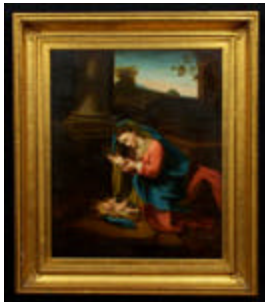
Oil & gilding with incising on wooden panel, 20 in. x 13 3/8 in. From St. Mary's Convent, Peekskill, N.Y.
Estimate: \$400 - \$600



Lot #270: MADONNA & CHILD & ST. JOHN

Oil on panel, pointed arch composition, 41 in. x 23 in.
From St. Mary's Convent, Peekskill, N.Y.

Estimate: \$400 - \$600



Lot #271: MADONNA & CHILD

Oil on canvas, 31 1/2 in. x 26 in. From St. Mary's
Convent, Peekskill, N.Y.

Estimate: \$800 - \$1,200



Lot #272: MADONNA & CHILD

Oil on canvas, 61 1/4 in. x 41 1/2 in. From St. Mary's
Convent, Peekskill, N.Y.

Estimate: \$1,000 - \$1,500



Lot #273: MADONNA & CHILD

Circular oil on canvas on a 28 3/4 in. x 28 3/4 in.
stretcher, image 28 3/8 diameter. From St. Mary's
Convent, Peekskill, N.Y.

Estimate: \$1,000 - \$1,500



Lot #274: RUSSIAN ICON OF CHRIST HOLDING A BIBLE IN GILT METAL RIZZA & GILTWOOD FRAME

Together with a repousse silvered metal icon of Christ & a landscape watercolor signed Norman Janci; the largest: 8 3/4 in. x 11 1/2 in. From St. Mary's Convent, Peekskill, New York.
Estimate: \$300 - \$400



Lot #275: RUSSIAN ICON OF THE VIRGIN & CHILD WITH SILVER & SILVER GILT RIZZA

The silver dated 1844 & repousse with a female saint, shells & scrollwork & with inscriptions, now set into a velvet covered panel. 7 1/4 in. x 5 7/8 in. From St. Mary's Convent, Peekskill, New York.
Estimate: \$300 - \$500



Lot #276: RUSSIAN ICON OF THE VIRGIN & CHILD WITH SILVER & SILVER GILT RIZZA

With inscription in Cyrillic, contained in gilt surround & stained wood frame box. Dimensions overall: 7 1/2 in. x 6 1/2 in. From St. Mary's Convent, Peekskill, New York.
Estimate: \$200 - \$300



Lot #277: GROS POINT NEEDLEWORK PICTURE OF THE LAST SUPPER

In carved giltwood frame 35 in. x 30 3/4 in. From St. Mary's Convent, Peekskill, N.Y.
Estimate: \$300 - \$500



Lot #278: "FRONTISPICE POUR UN RECUEIL DE MODE DE CHAPEAUX"

After Vernet. Provenance: Hazlitt, Goodey & Fox. 14 3/8 in. x 9 7/8 in. (sheet/sight). From the Estate of Frederick W. Hughes.
Estimate: \$125 - \$175



**Lot #279: HAND-COLORED ENGRAVING AFTER PU-
QUA**

"Published May 4, 1799, by W. Miller, Old Bond Street. London," 12 in. x 8 3/8 in. (image, sight).

Estimate: \$150 - \$250



**Lot #280: THREE TWENTIETH CENTURY
POLITICAL CARTOONS**

"Can You Imagine What Kind of Savage Would Wear That Thing," "Who Says a Sit Down is Legal?" and "Thank God The World is Safe for Nylons." All initialed. 18 1/2 in. x 26 in. (largest framed) From the Estate of Frederick W. Hughes.

Estimate: \$200 - \$300



Lot #281: "HIMANTOPUS CANDIDUS"

Walter (publisher), colored lithograph by J. Gould & H. C. Richter. Sight: 13 1/8 in. x 19 3/4 in.; framed: 22 in. x 28 in.

Estimate: \$300 - \$500



Lot #282: BOSTON

Hand-colored reproduction print, 22 1/2 in. x 35 3/8 in. (image).

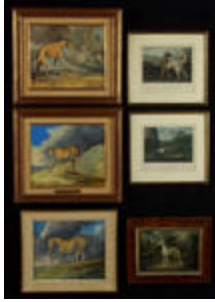
Estimate: \$100 - \$200



Lot #283: HAMPTON COURT

Black & white engraving, after Rigaud; 15 1/4 in. x 28 3/4 in. (plate).

Estimate: \$300 - \$500



Lot #284: GREYHOUNDS

Two hand-colored engravings after P. Reinagle, published by James Cundee, Albion Press, London; together with three oils on artist-board, signed "John Jonson" ca. 1965 & another oil on canvas. Largest framed: 15 1/8 in. x 17 3/16 in.

Estimate: \$300 - \$500



Lot #285: TWO FRAMED MAPS WITH HAND-COLORING

The first, a "Plan of Gifford House Estate/Roehampton, S.W. " (16 3/8 in. x 13 3/8 in); The second, a "Plan of the Island Waterford" (28 3/8 x 32 3/8); both matted &

framed under glass. From the Estate of Frederick W. Hughes.

Estimate: \$100 - \$200



Lot #286: THREE BOOK PLATES OF EGGS & NESTS

With hand-coloring; each 15 1/8 in. x 11 13/16 in. (framed). From the Estate of Frederick W. Hughes

Estimate: \$75 - \$125



Lot #287: THREE ORNITHOLOGICAL PRINTS

Lithographs with hand-coloring; published by Guerin, Paris. 9 3/8 in. x 5 1/8 in. (image/sight). From the Estate of Frederick W. Hughes.

Estimate: \$75 - \$125



Lot #288: BLACK & WHITE ENGRAVING, AFTER ANGELICA KAUFFMAN

28 3/4 in. x 20 3/4 in. (framed). From the Estate of Frederick W. Hughes.

Estimate: \$75 - \$125



Lot #289: BONAPARTE, AFTER GROS

Black & white engraving, 16 5/8 in. x 12 3/8 in. From the Estate of Frederick W. Hughes.

Estimate: \$75 - \$125



Lot #290: MAIDEN BY A CASTLE

Etching with hand-coloring inside a verre eglomise border in a gilded frame, 13 in. x 10 3/4 in. (framed size). From the Estate of Frederick W. Hughes.

Estimate: \$50 - \$75



Lot #291: UNION PARK, NEW YORK

Etching with hand-coloring, 5 1/2 in. x 8 in. (sight). From the Estate of Frederick W. Hughes.

Estimate: \$60 - \$80



Lot #292: GEORGE WASHINGTON & THE DECLARATION

Black & white engraving, 16 1/4 in. x 12 5/16 in. (image/sight). From the Estate of Frederick W. Hughes.

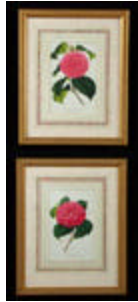
Estimate: \$100 - \$200



Lot #293: TWO HAND-COLORED BOOK PLATES

10 5/8 in. x 9 1/8 in. & 9 1/2 in. x 10 1/4 in. (framed). From the Estate of Frederick W. Hughes.

Estimate: \$75 - \$125



Lot #294: TWO CAMELLIA PRINTS AFTER STROOBART

Hand-colored lithographs, 17 1/2 in. x 14 1/8 in (framed). From the Estate of Frederick W. Hughes.

Estimate: \$75 - \$125



Lot #295: "ILE DE PHILOE/VUE DU TEMPLE DE VENUS ATHOR"

Color print on paper, 11 in. x 15 7/16 in. (image). From the Estate of Frederick W. Hughes.

Estimate: \$50 - \$100



Lot #296: SIX ITALIAN TOWNSCAPES AFTER GIOVANNI-BATTISTA FALDA

Black & white engravings, each approx. 8 3/8 in. x 11 3/8 in. (plate).

Estimate: \$700 - \$900



Lot #297: GROUP OF TWENTY HAND-PAINTED WALLPAPER PANELS

Depicting country cottages, a manor house and various figure & animals & a fox hunt.

Approx. 87 in. x 39 in. each.

Estimate: \$3,000 - \$5,000



Lot #298: FEDERAL MAHOGANY PILLAR & SCROLL SHELF CLOCK

With paper label, "Patent Clocks invented by Eli Terry, Made and Sold... by Lucius B. Bradley..."; with wood dial, brass works & eglomise panel; 31 in. tall.
Estimate: \$700 - \$900



Lot #299: LOUIS XVI-STYLE GILT BRONZE SMALL WALL CLOCK

The enamel dial within a sunburst & a lyre-form back surmounted by a mask head; 12 in. long.
Estimate: \$100 - \$200



Lot #300: GEORGE III INLAID & MAHOGANY LONG CASE CLOCK

The break arch dial signed Peter Keir, Falkirk & painted with portraits of Admirals Nelson, Jervies, Howl & Duncan, beneath a rotating ship; within a swan's neck hood with brass finials, the case with fruitwood stringing & fluting, block base on bracket feet. 88 in. tall
Estimate: \$2,500 - \$4,500



Lot #300A: GEORGE III MAHOGANY-INLAID OAK LARGE LONGCASE CLOCK

The 20 inch break arch painted face in a hood with swan's neck cresting on free-standing pilasters with gilt-metal capitals and bases, with cross banding, block-form base, approx. 7 feet 8 1/4 in. high x 30 1/4 in. wide x 16 in. deep.
Estimate: \$2,000 - \$3,000