

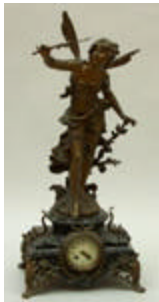
## Lots 301 - 409



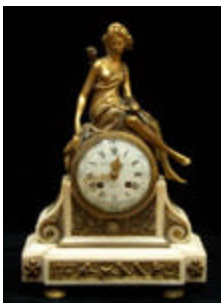
**Lot #301: LOUIS XVI CARVED GILTWOOD BAROMETER**  
Signed Jean Pain Mollets; Incorporating barometer & thermometer dials contained in a frame carved with quivers of arrows, drapery swags & laurel branches; 38 in. long.  
Estimate: \$800 - \$1,200



**Lot #302: CHARLES X FLORAL MARQUETRY INLAID ROSEWOOD PILLAR MANTLE CLOCK**  
The silvered steel dial with fruit & abochon ormolu surround, on column supports & rectangular base, with ivory wash moldings; 18 1/4 in. x 9 3/4 in.  
Estimate: \$700 - \$900



**Lot #303: FRENCH POT METAL & VERDE ANTICO MARBLE FIGURAL CLOCK**  
The shaped case with floral, cabochons & foliate handles & feet surmounted by a nymph wielding a wand & floral branch; 33 in. x 15 in.  
Estimate: \$800 - \$1,200



**Lot #304: LOUIS XVI-STYLE GILT BRONZE MOUNTED WHITE MARBLE FIGURAL MANTEL CLOCK, SIGNED ANTIDE JANVIER**  
The enamel face within a drum case surmounted by the bare breasted seated figure of Diana, the shaped base with fluted socles, wreath bound laurel branches & a putto panel; height: 14 1/2 in.  
Estimate: \$500 - \$700



**Lot #305: LOUIS XVI ORMOLU-MOUNTED WHITE MARBLE PILLAR MANTLE CLOCK**

The face signed Lieutaud a Paris: the drum case flanked by crossed laurel branches beneath an urn, raised on stop fluted supports & bowed breakarch base; 16 1/2 in. x 8 3/4 in.

Estimate: \$2,000 - \$3,000



**Lot #306: NEW ENGLAND CHIPPENDALE MAHOGANY SLANT-FRONT DESK**

The slant-front opening to a fitted interior with document drawers and pigeon holes, above 4 graduated molded drawers raised on ogee bracket feet; 42 1/2 in. x 39 in. x 23 1/4 in. From St. Mary's Convent, Peekskill, NY.

Estimate: \$2,000 - \$4,000



**Lot #307: NEW YORK FEDERAL MAHOGANY WORK TABLE**

The hinged top with inset corners opening to a fitted interior above 2 drawers fitted with fruit basket ring drop handles, on urn pedestal & 4 down swept reeded legs ending in brass lion's paw castors; 32 1/4 in. x 21 3/4 in. x 15 3/4. From St. Mary's Convent, Peekskill, NY.

Estimate: \$800 - \$1,200



**Lot #308: STAINED PINE EXTENSION DINING TABLE WITH THREE LEAVES**

Made from old wood with bowed ends, plain box frieze & turned & block legs; 30 in. x 60 in. x 92 3/4 in.

Estimate: \$700 - \$900

**Lot #309: NO LOT**



**Lot #310: A. KIMBEL & J. CARUS RENAISSANCE  
REVIVAL CARVED WALNUT HALL TREE**

96 in. x 43 3/4 in. From St. Mary's Convent, Peekskill, NY.

Estimate: \$400 - \$600



**Lot #311: AMERICAN EASTLAKE WALNUT WELLINGTON  
CHEST-OF-DRAWERS**

With galleried top above 6 paneled drawers with foliate cast metal drop handles flanked by a vertical hinged lock strip; 63 in. x 34 1/2 in. x 19 1/2 in. From St. Mary's Convent, Peekskill, NY.

Estimate: \$400 - \$600



**Lot #312: TWO SIMILAR VICTORIAN -STYLE TUFTED  
UPHOLSTERED ARMCHAIRS**

With skirted serpentine fronted seats & cabriole legs.

Estimate: \$400 - \$600



**Lot #313: AMERICAN CLASSICAL GILTWOOD MIRROR**

With turned frame & corners with paterae. 37 in. x 18 1/2 in. x 2 1/2 in.

Estimate: \$200 - \$400



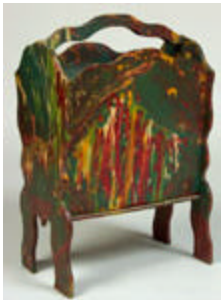
**Lot #314: AMERICAN CLASSICAL-STYLE SOLID & VENEERED MAHOGANY SIDEBOARD**

With shaped splash board, the front containing 2 shaped drawers above 2 paneled doors centering on applied foliate medallion; 50 in. x 49 3/4 in. x 19 1/2 in. From St. Mary's Convent, Peekskill, NY.  
Estimate: \$600 - \$800



**Lot #315: RENAISSANCE REVIVAL WALNUT & WALNUT VENEERED WELLINGTON CHEST-OF-DRAWERS**

Containing 8 drawers with burl panels, incised edges & turned wood pulls, flanked by hinged vertical locking strip; 64 1/2 in. x 36 3/4 in. x 21 1/2 in. From St. Mary's Convent, Peekskill, New York.  
Estimate: \$800 - \$1,200



**Lot #316: PAINTED MAGAZINE HOLDER**

28 in. high x 14 in. wide; provenance: Withington-Wells; from The Estate of Frederick W. Hughes.  
Estimate: \$100 - \$200



**Lot #317: FEDERAL CARVED MAHOGANY PEMBROKE TABLE**

The leaves with inset corners, the frieze drawer with brass oval handle, on swelling fluted legs. 28 1/2 in. x 32 3/4 in.  
Estimate: \$300 - \$500



**Lot #318: GOTHIC-STYLE CARVED OAK HALL CHAIR**

From St. Mary's Convent, Peekskill, NY.  
Estimate: \$300 - \$500



**Lot #319: FEDERAL MAHOGANY LOLLING CHAIR**

With serpentine top rail, upholstered back, S-form arms, square tapered legs.

Estimate: \$400 - \$600



**Lot #320: RENAISSANCE REVIVAL STAINED WALNUT BREAKFRONT STEP-BACK BOOKCASE**

The top enclosed by 3 break arch doors, the outset base containing 3 drawers with turned wood pulls; 47 1/2 in. x 65 in. x 14 1/4 in. From St. Mary's Convent, Peekskill, NY.

Estimate: \$700 - \$900



**Lot #321: FEDERAL-STYLE INLAID MAHOGANY GAMES TABLE**

The bowed breakfront folding top with feathered edge, the frieze with central oval panel, on square tapered legs; 31 1/4 in.

Estimate: \$300 - \$500



**Lot #322: QUEEN ANNE-STYLE BLACK JAPANNED CONSOLE TABLE**

32 1/2 in. x 42 in. x 15 1/4 in. From St. Mary's Convent, Peekskill, NY.

Estimate: \$300 - \$400



**Lot #323: AESTHETIC MOVEMENT CARVED WALNUT & WALNUT VENEERED SECRETAIRE ON STAND**

The hinged top opening in conjunction with the fall-front to pigeon holes and pull out writing section above 2 frieze drawers and 2 recessed doors flanked by fluted support, the reverse finished; 45 1/2 in. x 48 in. x 19 3/4 in. From St. Mary's Convent, Peekskill, NY.  
Estimate: \$700 - \$900



**Lot #324: GEORGIAN-STYLE PAINTED & CARVED MAHOGANY & BURL WALNUT SIDEBOARD WITH ATTACHED MIRROR**

Height: 7 Ft. 2 1/2 in., Width: 5 Ft.  
Estimate: \$500 - \$700



**Lot #325: STAINED PINE BOW-FRONT CORNER CABINET**

The 3 shelves within waved surround above a break arch paneled door, pierced bracket feet; 74 1/2 in. x 29 1/2 in. 20 in.  
Estimate: \$400 - \$600



**Lot #326: GOTHIC REVIVAL EBONIZED & PARCEL-GILT PICTURE FRAME**

With saw tooth crest & lancet banded frieze, stepped part fluted pilasters; 6 Ft. 8 1/2 in. x 4 Ft. 6 in. From St. Mary's Convent, Peekskill, New York.  
Estimate: \$200 - \$400



**Lot #327: ROCOCO REVIVAL CARVED WALNUT HALL TREE**

85 in. x 27 1/2 in. From St. Mary's Convent, Peekskill, NY.  
Estimate: \$300 - \$500





**Lot #328: RENAISSANCE REVIVAL WALNUT DAVENPORT DESK**

The super structure pierced with quatrefoils, the slant-front above a pull through lateral drawer, on bracket supports joined by a shelf; 42 1/2 in. x 23 1/2 in. x 21 in. From St. Mary's Convent, Peekskill, NY. Estimate: \$400 - \$600



**Lot #329: STONEWARE TANKARD WITH PEWTER LID**

Relief molded with 3 dancing figures, carrying wheat sheaves & a wine jug; hinged lid & ball thumb piece; grape & flowerhead banded base; 8 3/4 in. tall. Estimate: \$300 - \$500



**Lot #330: GERMAN CARVED WALNUT GROUP OF BULL & RECUMBENT COW WITH BELL NECKPIECE**

Together with 2 prints of Chinese harbors. The group measures 7 3/4 in. x 6 1/2 in., the prints 10 in. x 12 1/2 in. Estimate: \$300 - \$500



**Lot #331: AMERICAN PRESSED GLASS COMPOTE & COVER**

Height: 12 1/4 in. Estimate: \$100 - \$200



**Lot #332: GROUP OF GLASS TABLE ARTICLES**

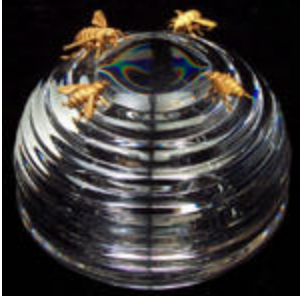
Comprising: a Murano clear glass group of 2 birds on a branch, a continental fan vase with blue & gold on amber, a Contemporary scent bottle & stopper, a contemporary peacock feather vase & a pressed slag shell-decorated tooth pick holder. Heights: 3 1/4 in. to 8 3/8 in. Estimate: \$100 - \$150



**Lot #333: TWO GUT GLASS DECANTERS & STOPPERS & A BACCARAT "MUSEE DES CRISTALLERIES" VASE**

One decanter with angular ringed neck & star burst medallions, the other with rain spot bowl & long neck; the tallest 11 1/4 in.

Estimate: \$200 - \$300



**Lot #334: STEUBEN GLASS BEEHIVE WITH FOUR SILVER GILT BEES**

3 in. tall & 5 1/8 in. diameter.

Estimate: \$600 - \$800



**Lot #335: GROUP OF MINERAL SPECIMENS**

Including rock crystal & amethystine quartz examples.

Approx. 20 pcs. Lengths: 2 1/2 in. to 15 in.

Estimate: \$500 - \$700



**Lot #336: GROUP OF MINERAL SPECIMENS**

Including geodes & small malachite pieces, & a piece of petrified wood. Lengths: 2 3/4 in. to 7 in.

Estimate: \$500 - \$700



**Lot #337: PAIR OF DRESDEN-TYPE PORCELAIN FIGURAL FOUR-LIGHT CANDELABRA**

Modeled as an early 19th century boy & a girl with basket, backed by floral encrusted tree. Height: 20 in.

Estimate: \$700 - \$900



**Lot #338: GROUP OF FIVE PORCELAIN TABLE ARTICLES**

Comprising: a pair of ovoid butterfly decorated vases with molded ring handles, a pair of Paris oval paté tubs & covers with bird panels, one signed L. Crette & a Paris pierced compote on tripod lion's feet; height of vases: 10 in. & length of tubs: 11 in.

Estimate: \$250 - \$450





**Lot #339: CORONET LIMOGES PORCELAIN HAND PAINTED GAME PLATTER & TWELVE MATCHING PLATES, SIGNED PUVIS**

With gilt scalloped rims, the plates comprising six pair of mirror image game birds; platter 17 in. long, plates 8 3/4 in. diameter.

Estimate: \$250 - \$350



**Lot #340: ROSENTHAL CHINA PART DINNER SERVICE FOR TWELVE, IN THE POMPADOUR PATTERN**

Comprising: 12 dinner plates, 10 soup plates, 12 dessert plates, 12 bread & butter plates, 12 tea cups, 12 saucers, 12 dessert dishes, 2 oval graduated platters, 1 circular open vegetable dish, 1 two handled vegetable dish & cover, 1 sauce boat & attached stand, 1 creamer; approx. 98 pcs.

Estimate: \$400 - \$600



**Lot #341: GROUP OF NINE ENGLISH PORCELAIN TABLE ARTICLES, IN VARIATIONS OF THE JAPAN PATTERN**

Comprising 2, 10 3/4 in. oval dishes, 9 3/4 in. concave sided dish, 2 teapot stands, 2 Spode "1220" cups & saucers & a "967" saucer.

Estimate: \$200 - \$300



**Lot #342: GROUP OF PORCELAIN TABLE ARTICLES**

Comprising a celadon Famille Rose plate, a plate with household implements, a rooster decorated lobed bowl & a Nippon poppy decorated covered dish; together with 2 embroidered silk panels; diameters: 4 3/4 in. to 10 in.

Estimate: \$100 - \$150



**Lot #343: GROUP OF ENGLISH TABLE CHINA**

Comprising: various Royal Worcester plates, 6 cups & 4 saucers, 2 Minton service plates & 5 Royal Crown Derby Imari pattern small dishes; together with a Japanese sauce tureen & cover, 2 dishes & a Paris porcelain cup & saucer.

Estimate: \$250 - \$350



**Lot #344: ROSE MEDALLION PLATE & IMARI  
BLOCK-FORM CACHE POT WITH  
GILT METAL MOUNTS**

The plate with Louis XV-style tripod leaf-form supports & the cache pot with reeded finials & feet. Heights: 4 in. & 5 in.  
Estimate: \$300 - \$500



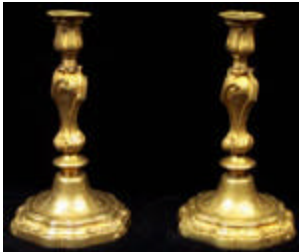
**Lot #345: PAIR OF CHINESE BLUE & WHITE  
PORCELAIN VASES WITH  
REGENCE-STYLE GILT BRONZE MOUNTS &  
COVERS**

The one with a procession in front of a castellated wall, the other with a nobleman with attendants, entrulac, petal tip & lambrequin mounts, the covers with artichoke finials; 21 1/4 in. tall.  
Estimate: \$1,200 - \$1,400



**Lot #346: PAIR OF LOUIS XV-STYLE ENGRAVED  
GILT BRONZE CANDLESTICKS**

Each with baluster stem, removable drop pans & spiral fluted dome base with foliate engraving; 10 1/2 in. tall.  
Estimate: \$700 - \$900



**Lot #347: PAIR OF EARLY LOUIS XV-STYLE  
ENGRAVED GILT BRONZE  
CANDLESTICKS**

Each with spiral twist baluster stem, removable nozzle, fleur de leis engraved serpentine base; 10 in. tall.  
Estimate: \$700 - \$900



**Lot #348: LOUIS XVI GILT METAL MOUNTED &  
INLAID WALNUT 3-DRAWER  
MINIATURE COMMUNE**

With cross banded top & drawers, fitted with beaded pulls & the square tapered legs ending in box castors; 11 3/4 in. x 12 1/2 in. x 7 in.  
Estimate: \$300 - \$500



**Lot #349: ENGLISH TURNED WOOD STAND**

The central orb with 6 bobbin turned spindles, ending in acorn finials. Length: 16 1/4 in. From the Estate of Frederick W. Hughes.

Estimate: \$125 - \$175



**Lot #350: GILT METAL FIGURAL INKSTAND**

The concave-fronted inkstand centered by a Chinaman seated on a stool; together with a gilt bronze figure of a song bird. Inkstand measures: 6 1/2 in. x 7 1/2 in.

Estimate: \$400 - \$600



**Lot #351: GEORGE III MAHOGANY TEA CADDY WITH BRASS DROP HANDLE & IVORY KEYHOLE ESCUTCHEON**

The shaped body on ogee bracket feet; 6 in. x 10 1/4 in. x 5 3/4 in.

Estimate: \$400 - \$600



**Lot #352: ART NOUVEAU GILDED COPPER TWO HANDED SMALL CENTERPIECE**

Length over handles: 11 1/2 in.

Estimate: \$80 - \$120



**Lot #353: PAIR OF CUT GLASS MOUNTED CAST METAL FIGURAL CANDLESICKS ON MARBLE BASES**

Each cast as a gentleman with rifle instructing a young boy also with rifle; 14 5/8 in. tall.

Estimate: \$125 - \$225



**Lot #354: PAIR OF CUT GLASS HUNG CAST METAL FIGURAL CANDLESTICKS ON MARBLE BASE**

Each cast as a fashionable woman in riding attire; 16 in. tall.  
Estimate: \$125 - \$225



**Lot #355: PAIR OF CUT GLASS HUNG GILT METAL FIGURAL CANDLESTICKS WITH MARBLE BASES**

Cast as 2 girls with tethered doe, tree-form stem; 13 3/4 in. tall.  
Estimate: \$150 - \$250



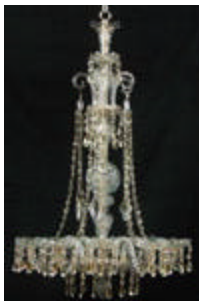
**Lot #356: PAIR OF CUT GLASS HUNG GILT METAL FIGURAL CANDLESTICKS & A FIGURAL THREE LIGHT CANDELABRUM**

Each stick cast as a North African girl in turban, the candelabrum as a sleeping old man with dog as a young woman signals for silence, marble bases.  
Estimate: \$200 - \$300



**Lot #357: TWO MINIATURE TORTOISESHELL BOXES, A MOTHER-OF-PEARL INLAID BLACK PAPIER-MACHE BOX & A JAPANESE HORN HANDLE WITH FIGURAL CARVING**

Box lengths: 2 in., 2 3/4 in. & 3 3/4 in.; handle: 8 in.  
Estimate: \$100 - \$150



**Lot #358: GEORGE III-STYLE CUT GLASS TEN LIGHT CHANDELIER**

The globe & baluster stem supporting S-form spiral twist arms ending in drop hung lobed drip pans surmounted by trumpet finial above C-scroll arms supporting faceted swags; height approx. 48 in.  
Estimate: \$1,500 - \$2,500



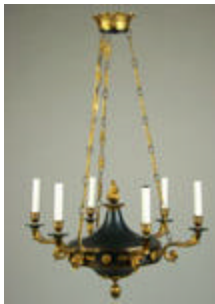
**Lot #359: EMPIRE-STYLE CUT GLASS & GILT METAL SIX-LIGHT CHANDELIER**

The primary ring supporting C-scroll arms ending in wood nozzles, joined to upper ring by faceted swags, basket swag base. Height: 29 1/2 in., Width: 19 1/2 in.  
Estimate: \$600 - \$800



**Lot #360: EMPIRE-STYLE BRONZE & GILT BRONZE TEN-LIGHT CHANDELIER**

The bowl with pine cone pendant & eagle head arms with flamework nozzle joined to the ceiling plate by 3 chains. Approx. 24 in. tall & 18 in. diameter.  
Estimate: \$1,000 - \$1,500



**Lot #361: EMPIRE-STYLE GILT METAL & BLACK TOLE SIX-LIGHT CHANDELIER**

The top form bowl flambeau finial, pine cone pendant & leaf capped arms, joined to ceiling crown by 3 chairs; approx. 34 1/2 in. tall & 22 1/2 in. diameter.  
Estimate: \$700 - \$900



**Lot #362: PAIR OF LOUIS XVI-STYLE GILT METAL SIX-LIGHT SMALL CHANDELIERS**

Each reeded spindle support with leaf-tipped C-scroll arms, leaf tip drip pans & swag-decorated nozzles, joined to ceiling support by bead & leaf chains; height: 18 in.  
Estimate: \$600 - \$800

**Lot #363: NO LOT**



**Lot #364: LOUIS XV-STYLE BLUE GLASS MOUNTED GILT METAL SIX-LIGHT CHANDELIER**

The pear form skeletal frame with flori form arms; together with a tan tole peinte small 4 light chandelier; Heights: 19 1/2 in. and 13 in.

Estimate: \$150 - \$200



**Lot #365: SET OF FOUR REGENCY-STYLE BRASS MOUNTED CLEAR & ENAMELED GLASS TWO-LIGHT HALL LANTERNS**

Height: 25 in.

Estimate: \$700 - \$900



**Lot #366: ARTS & CRAFTS BRASS MOUNTED SHELL & GLASS LAMP SHADE**

The two-tiered dome with acorn & bamboo repoussé brass armature & green & amber onyx glass cabochon mounts; 20 in. diameter.

Estimate: \$500 - \$700



**Lot #367: TWO CHINESE PORCELAIN VASES, MOUNTED AS LAMPS**

One, baluster-form famille rose on a pea green ground, the other, cylindrical cobalt glazed with gilt pagoda, bridge & landscape. Heights: 13 in. & 15 1/2 in.

Estimate: \$250 - \$350



**Lot #368: PAIR OF TRANSFER-DECORATED BLUE GLASS VASES, MOUNTED AS LAMPS**

Each ovoid bowl with mirror bust portrait of a girl in bonnet; dark blue ground fading to ivory; Height to socket: 15 1/2 in.

Estimate: \$300 - \$500





**Lot #369: PAIR OF FRENCH PATINATED TOLE WALL LIGHTS**

Height: 22 in.

Estimate: \$200 - \$400



**Lot #370: PAIR OF BOHEMIAN OVERLAY GLASS LUSTRE STANDS, MOUNTED AS LAMPS**

Height of socket: 17 1/4 in.

Estimate: \$200 - \$400



**Lot #371: PAIR OF CONTINENTAL PORCELAIN COVERED APOTHECARY JARS MOUNTED AS LAMPS**

Height of jars & covers: 10 in.

Estimate: \$75 - \$125



**Lot #372: PAIR OF CHARLES X-STYLE GILT METAL THREE-LIGHT BOUILLOTTE LAMPS**

Each with engine turned stem, angular C-scroll arms, dished base & adjustable green tole shade; 24 in. tall.

Estimate: \$700 - \$900



**Lot #373: LOUIS XVI-STYLE SILVER ON BRASS  
TWO LIGHT BOUILLOTTE LAMP**

With fluted stem, C-scroll arms, dished base adjustable green tole oval shade, together with a similar gilt metal two light lamp. Heights: 24 1/2 in. & 25 1/2 in.

Estimate: \$600 - \$800



**Lot #374: AMERICAN ART NOUVEAU ONYX GLASS  
& PATINATED METAL TABLE LAMP**

The octagonal flared shade with grid overlay, on angular stem & base: Height: 17 1/2 in. From St. Mary's Convent, Peekskill, New York.

Estimate: \$200 - \$300



**Lot #375: ENGLISH PORCELAIN TWO-HANDLED  
CAMPANI-FORM URN MOUNTED AS A LAMP**

Height: 26 in.

Estimate: \$300 - \$500



**Lot #376: PARIS PORCELAIN TWO-HANDLED VASE  
MOUNTED AS A LAMP**

Bearing the initials & date A.J.W. Jecut 1825; 30 in. tall.

Estimate: \$300 - \$500



**Lot #377: PAIR OF JAPANESE ENAMEL-  
DECORATED TAN GLASS VASES,  
MOUNTED AS LAMPS**

Each ovoid bowl with identical crane & mountain landscape panels flanked by prunis blossoms; bases painted to match. Height to sockets: 25 1/2 in.

Estimate: \$500 - \$700



**Lot #378: FAMILLE ROSE BALUSTER-FORM VASE, MOUNTED AS A LAMP**

Enamel decorated with birds perched on blossoming branches, the reverse with characters. Height of vase & stand 20 1/2 in.

Estimate: \$100 - \$200



**Lot #379: PAIR OF LOUIS XVI-STYLE GILT BRONZE TWO-LIGHT WALL APPLIQUES**

Each tapered stem with husk hung urn finial supporting double scroll arms with circular drip pans; 18 in. long.

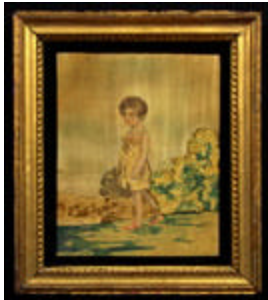
Estimate: \$400 - \$600



**Lot #380: PAIR OF LOUIS XVI-STYLE SILVER ON BRASS THREE-LIGHT BOUILLOTTE LAMPS**

Each fluted stem rising from laurel fillet base & the 3 prong candle holders with fluted nozzles; pleated fabric shades; 24 1/4 in. tall.

Estimate: \$1,000 - \$1,500

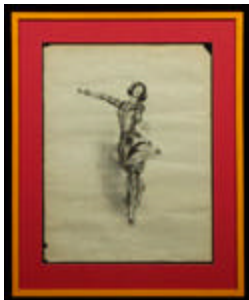


**Lot #381: SILKWORK PICTURE**

Ink and embroidery on silk, 10 in. x 8 in. (sight).

From the Estate of Frederick W. Hughes

Estimate: \$125 - \$175



**Lot #382: GERTRUDE V. WHITNEY IN A BAKST COSTUME**

After a drawing by Sargent, 33 in. x 26 5/8 in. From the Estate of Frederick W. Hughes.

Estimate: \$50 - \$75



**Lot #383: WEDDING INVITATION SAMPLES**

Together with a photograph of Helen Barney Alexander, 30 in. x 33 1/2 in. (framed). From the Estate of Frederick W. Hughes.

Estimate: \$50 - \$75



**Lot #384: PAIR OF GEORGIAN-STYLE MAHOGANY ARMCHAIR WITH NAILED UPHOLSTERY**

Estimate: \$300 - \$400



**Lot #385: VICTORIAN TUMBRIDGEWARE INLAID WALNUT FOOT STOOL WITH BEADWORK & NEEDLEWORK BURGUNDY GROUND PANEL**

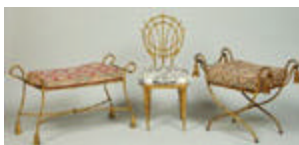
Together with a beadwork fragment of a winged female with 2 infants & a beadwork handbag with faux tortoiseshell clasp & chain; diameter of stool: 11 in.

Estimate: \$150 - \$200



**Lot #386: TWO PAIRS OF FIGURAL BOOKENDS**

Estimate: \$80 - \$100



**Lot #387: PAIR OF DECORATIVE GILT METAL ROPE-TWIST BANQUETTES**

Each with tasseled ends; together with a gilt metal faux bamboo side chair. (3 pieces.)

Estimate: \$200 - \$300



**Lot #388: TWO DECORATIVE GRADUATED GILT METAL ROPE-TWIST ETAGERES & A SIDE TABLE EN SUITE**

The etageres of 4 and 3 tiers respectively with tasseled feet, the 27 1/2 in. table with tasseled rope swags. Height of etageres: 36 in. & 4 ft. 9 1/2 in. Estimate: \$200 - \$300



**Lot #389: TWO GEORGE III-STYLE INLAID MAHOGANY ARMCHAIRS & TWO MATCHING SIDE CHAIRS**

Each stepped top rail above stick splats & the drop in seat on square tapered legs joined by H-stretchers. Estimate: \$700 - \$900



**Lot #390: PAIR OF REGENCY-STYLE BLACK PAINTED & PARCEL-GILT ARMCHAIRS**

Estimate: \$400 - \$600



**Lot #391: GEORGE III-STYLE MAHOGANY CAMELBACK SOFA**

With roll-over arms, serpentine seat on molded legs joined by H-stretchers; 81 in. long. Estimate: \$500 - \$700



**Lot #392: BUTTONED UPHOLSTERED CHESTERFIELD SOFA**

74 in. long Estimate: \$500 - \$700



**Lot #393: METTLACH INCISED POTTERY HALF-LITER TANKARD WITH LEAD LID**

10 in. tall, circa 1947 Estimate: \$125 - \$175



**Lot #394: LOUIS XVI-STYLE CARVED PAINTED & SILVERED WOOD CENTER TABLE**

30 in. x 42 1/2 in. x 22 in.  
Estimate: \$400 - \$600



**Lot #395: LOUIS XVI-STYLE CARVED PAINTED & PARCEL-GILT SMALL CONSOLE TABLE WITH GLASS TOP**

The "water stained" top above lunette carved frieze & raised on fluted legs; 33 in. x 44 1/2 in. x 12 1/2 in.  
Estimate: \$500 - \$700



**Lot #396: PAIR OF FLUTED PEDESTALS**

In faux marble paint; 45 in. tall.  
Estimate: \$400 - \$600



**Lot #397: CARVED GILTWOOD MIRROR**

The frame carved with petal tip & egg-and-dart bands, enclosing a beveled mirror plate; 34 in. x 49 in.  
Estimate: \$150 - \$250



**Lot #398: THREE ITALIAN NEOCLASSICAL-STYLE WALNUT & PARCEL-GILT ARMCHAIRS**

The backs pierced with diamonds & ovals, the seats on splayed legs.  
Estimate: \$700 - \$900



**Lot #399: SMALL QUANTITY OF TABLE LINEN & SOME TEXTILE FRAGMENTS**

Estimate: \$100 - \$150





**Lot #400: PAIR OF FRENCH PROVINCIAL CARVED OAK DOORS**

37 3/4 in. x 17 1/2 in.

Estimate: \$125 - \$175



**Lot #401: LOUIS XV-STYLE SILVERED-STEEL PAIR OF FIRE TONGS & MATCHING SHOVEL WITH GILT METAL FOLIATE CAST HANDLE**

Length: 30 1/2 in.

Estimate: \$100 - \$150



**Lot #402: GEORGE III-STYLE INLAID MAHOGANY SINGLE PEDESTAL EXTENSION DINING TABLE**

The cross banded top on urn form pedestals together with 3 extra leaves; 28 1/2 in. x 96 in. 46 in.

Estimate: \$800 - \$1,200



**Lot #403: PAIR OF WROUGHT IRON FOUR-LIGHT TRIPOD FLOOR CANDELABRA, LARGE COPPER CAULDRON WITH WROUGHT IRON SWING HANDLE, WIRE MESH TRESTLE FIRE SCREEN WITH BIRD DECORATION & A WROUGHT IRON & GLASS LANTERN.**

Height of candelabra: 5 ft., diameter of caudron: 28 in.

Estimate: \$300 - \$500



**Lot #404: PAIR OF GEORGE III-STYLE INLAID MAHOGANY SERPENTINE-FRONTED BEDSIDE TABLES**

27 1/4 in. x 17 3/4 in. x 14 1/2 in.

Estimate: \$200 - \$400



**Lot #405: LOUIS XV-STYLE CUT GLASS MOUNTED GILT METAL SIX-LIGHT CHANDELIER**

With partially fluted stem & S scroll arms; height: 13 in.  
Estimate: \$300 - \$500



**Lot #406: TWO NEOCLASSICAL-STYLE CUT GLASS MOUNTED GILT METAL CHANDELIERS**

One, 10 light with S-scroll arms, lobed drip pans & pineapple stem, the other, 6 light with urn stem. Diameters: 24 in. & 19 in. Heights: 19 in. & 16 1/2 in.  
Estimate: \$300 - \$500



**Lot #407: RENAISSANCE-STYLE GILT & WROUGHT IRON THREE-LIGHT CHANDELIER**

The lights joined by C-scrolls & to the ceiling ring by chains; height: approx. 30 in.  
Estimate: \$200 - \$400



**Lot #408: FEDERAL MAHOGANY OCTAGONAL TOP CANDLESTAND & A WROUGHT IRON TRIPOD 3-LIGHT FLOOR CANDELABRUM**

Candlestand: 26 in. x 16 in.; Candelabrum: 54 1/2 in.  
Estimate: \$200 - \$300



**Lot #409: CARVED HARDWOOD SMALL CHEST WITH WROUGHT IRON HANDLES**

12 in. x 26 1/4 in. x 13 in.  
Estimate: \$200 - \$400

**END OF SALE**