

Lots 801 - 810



Lot #801: AMERICAN ROSEWOOD STICK BAROMETER

With Timby's 1857 patent barometer dial and Simons & Son, Fulton, NY brass thermometer dial, the base with applied rope twist molding; 39 1/2 x 2 3/4 in.

Estimate: \$ 600.00 - \$ 1000.00



Lot #802: GEORGE III MAHOGANY BAROMETER

39 x 10 in.

Estimate: \$ 500.00 - \$ 700.00



Lot #802A: GEORGE III MAHOGANY BAROMETER

39 x 10 in.

Estimate: \$ 500.00 - \$ 700.00



Lot #803: CHIPPENDALE-STYLE MAHOGANY WING ARMCHAIR

With shell carved cabriole legs.

Estimate: \$ 600.00 - \$ 800.00



Lot #804: NEW YORK FEDERAL MAHOGANY CHEVAL MIRROR

The beveled swing plate on part-ringed uprights supporting brass 3-part swing candle holders and knoles, on reeded s-form legs ending in brass casters; 4 ft. 6 in. x 27 1/2 in.

Estimate: \$ 800.00 - \$ 1200.00



Lot #805: PHILADELPHIA CHIPPENDALE CARVED MAHOGANY SIDE CHAIR

The serpentine top rail above pierced gothic splats, the drop-in seat on canted legs joined by h-stretcher; 38 x 23 in.

Estimate: \$ 1000.00 - \$ 2000.00



Lot #806: GEORGE III MAHOGANY PARCEL GILT MIRROR

The rectangular frame with circular cresting and gilt incised inner border; 31 3/4 x 17 1/2 in. Provenance: From the estate of William M.V. Kingsland.

Estimate: \$ 300.00 - \$ 500.00



Lot #807: FEDERAL MAHOGANY SIDEBOARD

The d-shaped top above a case fitted with five drawers and 3 cupboard drawers, raised on turned and reeded legs; 42 x 64 x 25 1/2 in.

Estimate: \$ 2000.00 - \$ 3000.00



Lot #808: ASSEMBLED PAIR OF AMERICAN BLACK PAINTED BOW-BACK WINDSOR ARMCHAIRS

Each with 7 spindles pierced by u-shaped arm supports, the saddle seat on vase-turned legs joined by h-stretcher; 35 x 26 1/2 in.

Estimate: \$ 1200.00 - \$ 1400.00



Lot #809: CHIPPENDALE-STYLE CARVED MAHOGANY SETTEE

With serpentine top rail, shaped wings, roll-over arms, the seat on shell-carved cabriole legs ending in claw and ball feet; 47 x 6 ft. 10 in.

Estimate: \$ 1000.00 - \$ 1500.00



Lot #810: FEDERAL-STYLE FIGURED MAPLE TRESTLE TABLE

The overhang oval 5-plank top on block supports joined by triangular stretchers; 30 1/4 x 10 ft. 44 in.

Estimate: \$ 1200.00 - \$ 1800.00

[To Top](#)



Lots 811 - 820



Lot #811: RENAISSANCE REVIVAL CARVED AND VENEERED WALL REGULATOR

The enamel chapter ring centering a second's dial and single keywind aperture, in arched glazed door with applied with 1/2-round pilasters, beneath shaped crest, on bracket base; approx. 4 ft. x 15 1/2 in. x 6 1/2 in.

Estimate: \$ 600.00 - \$ 800.00



Lot #812: FEDERAL CARVED GILTWOOD AND GILT-METAL OVAL MIRROR

The molded frame with urn crest supporting floral spray and garlands, reeded urn and foliate apron; 4 ft. 9 in. x 19 1/2 in. Provenance:

Purchased from Patricia Blane, Ltd., Beverly Farms, MA in Oct. 1969.

Had been in her family since 1925.

Estimate: \$ 2000.00 - \$ 3000.00



Lot #813: AMERICAN CLASSICAL MAHOGANY TWO-PART SECRETAIRE

The upper part with double panel, fall front opening to drawers and pigeon holes, the lower part with ogival drawers and block and turned legs; 5 ft. 4 in. x 37 x 24 1/4 in.

Estimate: \$ 400.00 - \$ 600.00



Lot #814: CHIPPENDALE-STYLE FOUR-POST BEDSTEAD

With reeded foot post; 7 ft. 3 1/2 in. x 5 ft. x 6 ft. 4 1/2 in.

Estimate: \$ 600.00 - \$ 900.00



Lot #815: LABELED PHILADELPHIA CHIPPENDALE MAHOGANY SMALL MIRROR

With paper label, "Kennedy's...Horse Alley, Philadelphia...", with molded borders, shaped crest and apron; 21 x 12 1/2 in. Provenance: Purchased from Richard Gorham Antiques, Los Angeles, CA in July 1964.

Estimate: \$ 2000.00 - \$ 3000.00



Lot #815A: AMERICAN VENEERED AND PARCEL GILT MIRROR

The rectangular mirror plate in a molded gilt bezel with scroll crest ears and pendant, the crest applied with a phoenix in a pierced circlet; 29 1/2 x 17 1/4 in.

Estimate: \$ 400.00 - \$ 600.00



Lot #816: FEDERAL EGLOMISÉ AND GILTWOOD PIER FRAME

The ivory panel with gilt eagle and floral swags, the frame with vertical beading and ball-applied cornice; 32 1/2 x 19 1/2 in.

Estimate: \$ 300.00 - \$ 600.00



Lot #817: CHIPPENDALE-STYLE MAHOGANY BEDSTEAD

With scrolled headboard and ball and claw feet; 31 x 4 ft. 3 in. x 6 ft. 3 in. Provenance: Purchased from Christie's in 1978.

Estimate: \$ 300.00 - \$ 500.00



Lot #818: FEDERAL CHERRY FOUR-POST CANOPY BED

5 ft. 4 in. x 4 ft. 7 in. x 6 ft. 5 in.

Estimate: \$ 800.00 - \$ 1200.00



Lot #819: FEDERAL BIRCH AND MAHOGANY SERVING TABLE

32 1/2 x 40 x 18 1/2 in.

Estimate: \$ 800.00 - \$ 1200.00



Lot #820: FEDERAL SHIELD-BACK MAHOGANY SIDE CHAIR

With pierced splat back; 38 x 21 1/4 x 17 in. Provenance: Purchased from De Caro Auction Sales, Inc., Seaford, DE in Jan. 1987.

Estimate: \$ 300.00 - \$ 500.00



Lot #820A: PAIR OF FEDERAL MAHOGANY SIDE CHAIRS

The shield-form backrest with 4 shaped slats carved with flutes and overlapping scales springing from an enleafed demilune, the serpentine padded seat covered in hair cloth woven with flowerheads, trimmed with brass nailheads on tapered square legs ending in spade feet; 38 1/2 x 21 1/2 x 20 in.

Estimate: \$ 1000.00 - \$ 1500.00

[To Top](#)



Lots 821 - 830



Lot #821: QUEEN ANNE MAHOGANY BONNET-TOP HIGH BOY

The bonnet top above case fitted with 3 short and 3 graduating long drawers above a base with 1 long and 3 short drawers and a shell-carved frieze, the cabriole legs with ball and claw feet of a later date; 6 ft. 11 in. x 40 x 20 1/2 in.

Estimate: \$ 5000.00 - \$ 7000.00



Lot #822: MAPLE, HICKORY AND ASH BOW-BACK WINDSOR ARMCHAIR CHAIR

38 3/4 x 26 1/2 x 14 3/4 in. Provenance: Purchased from The Francestown Gallery, Francestown Village, NH in Sept. 1986.

Estimate: \$ 600.00 - \$ 1000.00



Lot #823: CHIPPENDALE CARVED WALNUT SIDE CHAIR

41 x 23 x 16 1/4 in.

Estimate: \$ 2000.00 - \$ 3000.00



Lot #824: PAIR OF CARVED MAHOGANY SIDE CHAIRS

Possibly Philadelphia; square back with urn and drapery swags.

Estimate: \$ 800.00 - \$ 1200.00



Lot #825: CHIPPENDALE MAHOGANY SIDE CHAIR

Probably New England; with shell carved crest, pierced splat and chamfered straight legs. Provenance: Purchased from Sotheby's on October 24, 1986, Important American Furniture, Folk Art, Sale 5500, Lot 187B.

Estimate: \$ 500.00 - \$ 800.00



Lot #826: FEDERAL MAHOGANY CANDLESTAND

Circular top above urn stand ending on pad feet, nice old surface; 28 in.

Estimate: \$ 800.00 - \$ 1200.00



Lot #827: CHIPPENDALE-STYLE WALNUT SIDE CHAIR

Pennsylvania; with an arched crest carved with tassels, a pierced splat, a shell carved skirt and knees, on ball and claw feet. Provenance: Purchased from Philip H Bradley, Downingtown, PA., originally in Crazer collection.

Estimate: \$ 500.00 - \$ 800.00



Lot #828: CHIPPENDALE WHITE AND BLUE PAINTED ARCHITECTURAL CORNER CABINET

7 ft. 10 1/2 in. x 40 x 25 in. Provenance: Purchased from Hannan Antiques, Chatham on the Cape, MA in August 1972.

Estimate: \$ 2000.00 - \$ 3000.00



Lot #829: AMERICAN RED-PAINTED STEP-BACK CUPBOARD

Three shelves above a carcass fitted with a single door; 7 ft. x 44 1/4 in. x 19 in.

Estimate: \$ 1000.00 - \$ 1500.00



Lot #830: CHIPPENDALE-STYLE MAHOGANY CORNER CHAIR

32 x 29 x 19 in. Provenance: Purchased from Hubley House Antiques, Lancaster, PA in June, 1979. Originally purchased in 1944 by Mrs. Hubley from the Elias family of West Chester, PA. 32 x 29 x 19 in. Estimate: \$ 500.00 - \$ 700.00

[To Top](#)



Lots 831 - 840



Lot #831: CHIPPENDALE MAHOGANY AND PARCEL GILT MIRROR

The molded frame with shaped crest centered by a hoho bird, shaped apron; 26 1/2 x 15 1/2 in.

Estimate: \$ 200.00 - \$ 300.00



Lot #832: FEDERAL INLAID MAHOGANY CORNER WASHSTAND WITH PEWTER BASIN

New England; with straight tapered legs and inlaid bellflowers; 37 1/2 x 23 1/2 x 17 in. Provenance: Purchased from Don Howe, Inc., Coatesville, PA in July, 1988.

Estimate: \$ 800.00 - \$ 1200.00



Lot #833: FEDERAL MAHOGANY AND BIRCH LADY'S WRITING DESK

With arched pediment over glazed doors with a hinged writing surface, cresting of a later date; 5 ft. 8 in. x 37 in. x 19 1/2 in.

Estimate: \$ 1500.00 - \$ 2500.00



Lot #834: CHIPPENDALE MAHOGANY TILT-TOP PIECRUST TABLE

Philadelphia; the base probably ca. 1750, the top of a later date, fluted with acanthus carved legs on ball and claw feet; 28 x 31 1/2 in.

Estimate: \$ 2000.00 - \$ 4000.00



Lot #835: FEDERAL INLAID CURLY MAPLE GAMES TABLE

Solid curly maple top above an inlaid frieze and raised on solid turned curly maple legs; 28 x 36 x 17 3/4 in.

Estimate: \$ 2000.00 - \$ 3000.00



Lot #836: PAINTED NEW ENGLAND HIGH STOOL, POSSIBLY SHAKER

32 x 18 1/4 in.

Estimate: \$ 400.00 - \$ 600.00



Lot #837: NEW ENGLAND CHERRY LOW BOY

Rectangular molded top above a case fitted with 3 drawers and raised on cabriole legs with shell carved knees and ball and claw feet; 29 1/2 x 31 1/2 x 20 1/4 in. Provenance: Purchased from Joe Kinding Jr. & Son, York, PA in Feb. 1969.

Estimate: \$ 1500.00 - \$ 2500.00



Lot #838: FEDERAL MAHOGANY PEMBROKE TABLE

Rectangular top raised on base with single drawer raised on square tapering legs; 29 x 21 1/2 x 32 in.

Estimate: \$ 500.00 - \$ 800.00



Lot #839: FEDERAL MAHOGANY TRIPOD TABLE WITH SQUARE TOP AND INLAID BAND

28 x 15 1/2 in.

Estimate: \$ 600.00 - \$ 900.00



Lot #840: NEW ENGLAND MAHOGANY PEMBROKE TABLE

Rectangular top above a base joined by x-shaped stretcher, raised on square chamfered legs; 28 3/4 x 23 x 29 in.

Estimate: \$ 1000.00 - \$ 1500.00

[To Top](#)



Lots 841 - 850



Lot #841: NEW ENGLAND MAHOGANY DROP LEAF TABLE, POSSIBLY RHODE ISLAND

The rectangular top above a base with four square fluted legs; 26 3/4 x 36 x 36 in.

Estimate: \$ 1500.00 - \$ 2500.00



Lot #842: FEDERAL-STYLE PAINTED CAMEL-BACK SETTEE

40 3/4 x 7 ft. 3 in. x 29 1/8 in.

Estimate: \$ 800.00 - \$ 1200.00



Lot #843: CHIPPENDALE MAHOGANY PARCEL-GILT PIER MIRROR

Two-part beveled plate with shell tip inner border and a frame with swan's neck pediment carved with foliage and rosettes, above pendant fruit and a shaped apron; 5 ft. 3 in. x 26 1/2 in.

Estimate: \$ 800.00 - \$ 1200.00



Lot #844: CHIPPENDALE MAHOGANY VENEERED MIRROR BY JOHN ELLIOT

Shaped cresting above a rectangular mirror plate, with partial original label; 25 1/2 x 14 1/4 in.

Estimate: \$ 800.00 - \$ 1200.00



Lot #845: LATE FEDERAL MAHOGANY VENEERED PARCEL GILT PIER MIRROR

The rectangular vertical plate with molded edges; 4 ft. 5 in. x 26 3/4 in.

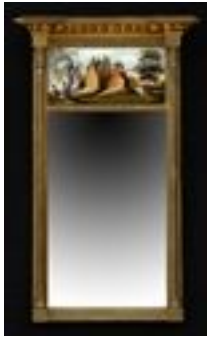
Estimate: \$ 500.00 - \$ 800.00



Lot #846: FEDERAL CARVED GILTWOOD AND EBONIZED CONVEX MIRROR

With inner reeded and petal-tip borders, ball-applied cavetto and molded edge.

Estimate: \$ 600.00 - \$ 800.00



Lot #847: FEDERAL CARVED GILTWOOD PIER MIRROR WITH EGLUMISÉ PANEL

The panel with lakeside view with man in boat, clustered houses and a bridge, applied triple pilasters and ball crest; 42 1/2 x 24 1/4 in.

Estimate: \$ 300.00 - \$ 500.00



Lot #848: STEINWAY MAHOGANY BABY GRAND PIANO

The case raised on square tapered legs on block feet with Capo d'Astro and duplex scale patents, serial # M 211944; 38 x 5 ft. 6 in.

Estimate: \$ 6000.00 - \$ 8000.00



Lot #849: FEDERAL PAINTED WINDSOR BENCH

6 ft. 8 in. x 33 in. x 21 in.

Estimate: \$ 1000.00 - \$ 1500.00



Lot #850: AMERICAN PINE STAINED SAWBUCK TABLE

The overhanging 2 plank top on x-form supports joined by stretchers; 27 1/2 x 7 ft. 8 1/2 in. x 39 in.

Estimate: \$ 1000.00 - \$ 1500.00

[To Top](#)



Lots 851 - 860



Lot #851: FEDERAL MAPLE INLAID MAHOGANY LONG SETTEE

The bowed back and padded arm-rests on free-standing reeded vase-form supports, the upholstered seat on turned legs surmounted by figured maple panels on turned legs ending in brass cup toes; 36 1/4 in. x 8 ft. 7 in. x 21 1/2 in.

Estimate: \$ 5000.00 - \$ 7000.00



Lot #852: NEW HAMPSHIRE MAPLE HIGHBOY

With later mahogany finish, the upper section with molded cornice, below 3 short and 4 graduating long drawers, the whole raised on cabriole legs and ending in pad feet.

Estimate: \$ 8000.00 - \$ 12,000.00



Lot #853: PENNSYLVANIA QUEEN ANNE WALNUT SIDE TABLE

Three-plank overhang top above 3 drawers with turned pulls, on round tapered legs ending in club feet; 28 x 5 ft. 3 in. x 35 3/4 in.

Estimate: \$ 1000.00 - \$ 1500.00



Lot #854: FEDERAL CARVED PINE MANTLEPIECE

The shelf with outset corners above diagonal reeded edge and a central oval fan medallion and vertical oval ends, on fluted pilasters.

Estimate: \$ 700.00 - \$ 900.00



Lot #855: CONNECTICUT CHIPPENDALE MAHOGANY CHEST ON CHEST

The breakarch crest with dentil moldings above a flame inlaid frieze and 4 flat drawers fitted with brass batwing drop handles flanked by quarter-round fluted pilasters, the lower part with 3 drawers above an apron pierced with a heart and raised on ogee bracket feet; 7 ft. 5 1/2 in. x 4 ft. 1 in. x 22 1/2 in.

Estimate: \$ 3000.00 - \$ 5000.00



Lot #856: NEW ENGLAND CHERRY FEDERAL FOUR DRAWER CHEST

The rectangular top with crossbanded edge above a case fitted with 4 drawers, below a skirt with similar crossbanding and a diamond and dot swag inlay.

Estimate: \$ 800.00 - \$ 1200.00



Lot #857: NEW ENGLAND MAPLE BANISTER-BACK SIDE CHAIR

Shaped crest above 4 half-round splats, the rush seat on turned and block legs; 41 1/2 x 19 1/4 in.

Estimate: \$ 300.00 - \$ 500.00



Lot #858: CHIPPENDALE CARVED MAHOGANY WING ARMCHAIR

With shaped wings and out-scolled arms, the straight seat on foliate carved legs joined by turned and block h-stretchers and ending in claw and ball feet; 47 1/2 x 35 1/2 in.

Estimate: \$ 800.00 - \$ 1200.00



Lot #859: AMERICAN PAINTED WALL CABINET

Enclosed by 2 pairs of triple fielded panel doors, with metal pulls and swivel latches; 6 ft. 3 3/4 in. x 5 ft. 6 3/8 in. x 15 3/4 in.

Estimate: \$ 700.00 - \$ 900.00



Lot #860: AMERICAN STAINED CORNER CUPBOARD

The flat top with canted corners above 3 shaped shelves with curved back above a double fielded paneled door; 6 ft. 7 1/2 in. x 46 x 18 1/4 in.

Estimate: \$ 800.00 - \$ 1200.00

Lots 861 - 870



Lot #861: TWO SIMILAR PENNSYLVANIA CHIPPENDALE WALNUT SIDE CHAIRS

Each shell carved serpentine top rail above scrolled baluster splat and the needlepoint drop in seat on cabriole legs, the one with shell knees ending in trifid feet; 40 1/4 x 20 in. and 39 1/4 x 21 in.

Estimate: \$ 1500.00 - \$ 2500.00



Lot #862: NEW ENGLAND FEDERAL INLAID MAHOGANY GAMES TABLE

Shaped serpentine folding top with diamond banded edge, plain interior surface, flame veneered frieze with central oval, corner rectangles with crenulated lower edge, on square tapered legs; 30 x 36 x 17 1/2 in.

Estimate: \$ 500.00 - \$ 700.00



Lot #863: NEW ENGLAND MAPLE DOUBLE GATE LEG DROP-LEAF TABLE

Top with bowed ends and d-shaped leaves, the frieze with shaped ends raised on angular cabriole legs and ending in Spanish feet; 28 3/4 x 42 3/4 x 18 3/4 in.

Estimate: \$ 1500.00 - \$ 2500.00



Lot #864: NEW ENGLAND FEDERAL MAHOGANY WORK TABLE

The top with outset rounded corners above 2 flat drawers with brass rosette pulls, flanked by ring turned corners continuing into spiral reeded legs; 27 3/4 x 17 1/2 x 17 in.

Estimate: \$ 1500.00 - \$ 2500.00



Lot #865: AMERICAN FEDERAL CARVED MAHOGANY CARD TABLE

The rectangular folding and swivel top with rounded corners and column pedestal with quadruple lion's paw feet with casters; 29 1/2 x 36 x 17 1/2 in.

Estimate: \$ 1000.00 - \$ 1500.00



Lot #866: FEDERAL CARVED MAHOGANY SHIELD-BACK SIDE CHAIR

The pierced back with urn and drapery swags, serpentine upholstered seat with tapered molded legs joined by h-stretchers; 39 x 21 in.
Estimate: \$ 600.00 - \$ 800.00



Lot #867: NEW ENGLAND INLAID MAHOGANY GAMES TABLE

The serpentine folding top with line inlaid edge and the frieze raised on square tapering legs; 30 x 36 x 17 1/2 in.
Estimate: \$ 600.00 - \$ 800.00



Lot #868: CHIPPENDALE MAHOGANY TILT-TOP TEA TABLE

The piecrust tilting top on column and urn pedestal and tripod foliate-carved legs ending in ball and claw feet; 26 1/2 in., 30 3/4 in. diam.
Estimate: \$ 800.00 - \$ 1200.00



Lot #869: HUDSON VALLEY PAINTED LADDERBACK SIDE CHAIR

Breakarch crest painted with fruit filled compote and birds, above 3 splats with morning glory and cherries, rushed seat on turned legs and box stretchers; 44 x 20 in.
Estimate: \$ 600.00 - \$ 800.00



Lot #870: NEW ENGLAND MAPLE INLAID MAHOGANY GAMES TABLE

The shaped serpentine folding top inlaid with figured maple edging above oval flame paneled frieze and raised on square tapered legs including a gate leg; 30 x 36 x 17 3/4 in.
Estimate: \$ 1500.00 - \$ 2500.00

Lots 871 - 880



Lot #871: FEDERAL MAHOGANY CANDLESTAND

28 1/8 x 18 1/2 x 14 1/2 in.

Estimate: \$ 250.00 - \$ 450.00



Lot #872: FEDERAL FIGURED MAPLE TRIPOD CANDLE STAND

The fixed angular serpentine top on flared column and vase pedestal and angular legs ending in club feet; 26 x 17 x 16 1/2 in.

Estimate: \$ 300.00 - \$ 500.00



Lot #873: CHIPPENDALE MAHOGANY CHEST ON CHEST

The molded cornice with canted corners above 2 short and 3 long cock-beaded drawers with brass batwing drop handles, fluted corners, the lower part with 2 short and 3 long drawers, claw and ball feet; 6 ft. 6 3/4 in. x 44 x 21 in.

Estimate: \$ 2000.00 - \$ 4000.00



Lot #874: FEDERAL MAHOGANY PEMBROKE TABLE

The rectangular top with 2 drop leaves raised on square tapered legs; 28 1/2 x 20 1/2 x 31 in.

Estimate: \$ 400.00 - \$ 600.00



Lot #874A: MAHOGANY INLAID OAK CHEST OF DRAWERS

The rectangular top with crossbanded border over 3 drawers with brass loose ring handles on bracket feet; 26 x 22 1/4 x 17 3/4 in.

Estimate: \$ 1000.00 - \$ 1500.00



Lot #875: FEDERAL MAHOGANY BOWFRONT CHEST OF DRAWERS

Slightly overhanging top above a case fitted with 4 line-inlaid drawers and raised on splayed bracket feet; 38 x 44 x 22 in.

Estimate: \$ 800.00 - \$ 1200.00



Lot #876: FEDERAL CHERRY BLANKET CHEST

40 x 42 3/4 x 18 1/2 in.

Estimate: \$ 300.00 - \$ 500.00



Lot #877: CLASSICAL GILTWOOD CONVEX MIRROR

Cresting with an eagle with spread wings perched atop a rock base with oak branches and leaves on either side, below a cast circular border and an ebonized inner border below a foliate apron with 2 candle branches, cut glass bobashes and brass cup candle nozzles; 30 1/4 x 24 1/2 x 5 1/2 in.

Estimate: \$ 1500.00 - \$ 2500.00



Lot #878: CLASSICAL GILTWOOD CONVEX MIRROR

Cresting with an eagle with spread wings perched atop a rock base with oak branches and leaves on either side, below a cast circular border and an ebonized inner border below an apron with 2 intertwined snakes with 2 candle branches, cut glass bobashes and brass cup candle nozzles; 31 x 24 1/2 x 6 1/2 in.

Estimate: \$ 1500.00 - \$ 2500.00



Lot #879: GRAIN-PAINTED NEW ENGLAND CHEST OF DRAWERS

The rectangular top with back splat above a case fitted with 2 short and 2 long drawers, whole raised on bracket feet; 44 1/4 x 43 x 18 in.

Estimate: \$ 400.00 - \$ 600.00



Lot #880: NEW JERSEY PINE CORNER CUPBOARD

Wavy molded cresting above a fret-work panel and a pair of glazed doors, the base fitted with 2 short drawers and a pair of cupboard doors, the whole raised on bracket feet; 6 ft. 11 1/2 in. x 47 in.

Estimate: \$ 1000.00 - \$ 1500.00

[To Top](#)



Lots 881 - 890



Lot #881: SET OF EIGHT PENNSYLVANIA CHIPPENDALE-STYLE WALNUT CHAIRS

Comprising 6 side and 2 arm, each stamped in back rail "By G. A. Baghurst 1937," armchair: 40 x 29 x 19 in.

Estimate: \$ 2000.00 - \$ 3000.00



Lot #882: FEDERAL MAHOGANY TWO-DRAWER WORK TABLE

Rectangular top with 2 drop leaves, the frieze fitted with 2 drawers and the whole raised on ring turned legs ending in box casters; 29 1/2 x 19 x 19 in.

Estimate: \$ 800.00 - \$ 1000.00



Lot #882A: AMERICAN FEDERAL MAHOGANY WORK TABLE

The rectangular top with earred corners above 2 small drawers with brass pulls, the top drawer fitted with writing surface, pen rest and wells, all over a slide with with pleated celadon silk basket, on reeded and turned cylindrical legs; 28 3/4 x 21 1/2 x 17 3/4 in.

Estimate: \$ 1500.00 - \$ 2500.00



Lot #883: PENNSYLVANIA WALNUT TALL CHEST OF DRAWERS

Molded cornice above a case fitted with 5 short and 4 long drawers, surmounted by fluted quarter columns, the whole raised on bracket feet.

Estimate: \$ 3000.00 - \$ 5000.00



Lot #884: FEDERAL MAHOGANY SERVING TABLE

Serpentine shaped, 38 in. x 44 in. x 23 in.

Estimate: \$ 1000.00 - \$ 2000.00



Lot #885: CHIPPENDALE RED-STAINED CORNER CUPBOARD, PROBABLY PENNSYLVANIA

The molded cornice above a single door fitted with 12 glass panes, above a pair of cupboard doors; 6 ft. 10 1/2 in. x 41 x 19 in.
Estimate: \$ 2000.00 - \$ 4000.00



Lot #886: CHIPPENDALE MAHOGANY CARD TABLE

D-shaped hinged top with line inlay above a conforming frieze, raised on square tapering legs with line inlay; 29 x 37 1/2 x 18 in.
Estimate: \$ 400.00 - \$ 800.00



Lot #887: AMERICAN FEDERAL MAHOGANY WORK TABLE

The rectangular top with eared corners above 2 small drawers with brass pulls, the top drawer fitted with wells, all over a slide with pleated celadon silk basket on reeded and turned cylindrical legs; 28 x 20 3/4 x 15 in.
Estimate: \$ 1200.00 - \$ 1400.00



Lot #888: CLASSICAL GILTWOOD OVERMANTLE MIRROR

Estimate: \$ 700.00 - \$ 900.00



Lot #889: AMERICAN MUSTARD-PAINTED TRIPOD TABLE

Circular molded top on part ring turned stem on disc base and flared ring turned legs; 27 in. 14 1/4 in. diam.
Estimate: \$ 500.00 - \$ 700.00



Lot #890: CHIPPENDALE-STYLE MAHOGANY SERPENTINE-BACK SOFA

With sloping roll-over arm rests, the seat on molded and canted legs joined by h-stretchers; 36 x 7 ft. 3 in.
Estimate: \$ 1000.00 - \$ 1500.00

Lots 891 - 600



Lot #891: NEW ENGLAND SCHOOL: PORTRAIT OF A GENTLEMAN

Oil on board, painted on an old drawer bottom, in plain black frame; 13 1/2 x 16 1/2 in.

Estimate: \$ 1000.00 - \$ 1500.00



Lot #892: PORTRAIT OF A LADY

Oil on canvas, relined, 21 x 17 in.

Estimate: \$ 400.00 - \$ 600.00



Lot #893: PORTRAIT OF A GENTLEMAN

Oil on canvas, relined and laid down on cardboard, 26 3/8 x 21 3/8 in.

Provenance: From the estate of William M.V. Kingsland.

Estimate: \$ 400.00 - \$ 600.00



Lot #894: AMERICAN SCHOOL: PAIR OF PORTRAITS

16 3/4 x 13 7/8 in. Provenance: From the estate of William M.V. Kingsland.

Estimate: \$ 1000.00 - \$ 1500.00



Lot #895: AFTER WILLIAM SARTAIN: FOUR PRINTS

John André, Ben Braddock, George Gage and George Washington, signed in the plate; 4 x 3 5/8 in. (sight).

Estimate: \$ 200.00 - \$ 400.00



Lot #896: MANNER OF J.S. BLUNT: PORTRAIT OF A LADY

Oil on canvas, relined, 30 x 25 1/4 in.

Estimate: \$ 800.00 - \$ 1200.00



Lot #897: PRIOR HAMBLIN SCHOOL: PORTRAIT OF A WOMAN

Oil on wood panel, 14 3/8 x 11 in.

Estimate: \$ 500.00 - \$ 700.00



Lot #898: AMERICAN SCHOOL: PORTRAIT OF A WOMAN

Oil on canvas, 30 x 25 in., inscribed on verso: Painted by Lyman E. Cole 1855.

Estimate: \$ 300.00 - \$ 500.00



Lot #899: AMERICAN SCHOOL: PORTRAIT OF AN ELDERLY GENTLEMAN

Oil on wood panel, 28 x 24 in. Provenance: From the estate of William M. V. Kingsland.

Estimate: \$ 400.00 - \$ 600.00



Lot #900: AMERICAN SCHOOL: SISTERS

Charcoal and chalk on paper, 11 1/2 x 9 5/8 in.

Estimate: \$ 200.00 - \$ 300.00

[To Top](#)

