

Lots 101 - 110



Lot #101: FEDERAL MAHOGANY NIGHT STAND

Containing two drawers with brass pulls, on square tapered legs; 28 1/2 x 16 1/2 x 15 1/4 in.

Estimate: \$ 200.00 - \$ 400.00



Lot #102: FEDERAL MAHOGANY DESK

The rectangular case fitted with a fall front, the front and sides veneered in bird's-eye maple; the whole raised on reeded tapering legs, 35 3/4 x 30 x 18 1/2 in.

Estimate: \$ 1000.00 - \$ 1500.00



Lot #102A: EMPIRE MAHOGANY BOSTON CHEST OF DRAWERS

The slightly over-hanging top above a case fitted with four drawers and flanked by one-half columns, and raised on bun feet, hardware replaced. 36 1/2 x 48 1/4 x 25 in

Estimate: \$ 800.00 - \$ 1200.00



Lot #103: INLAID MAHOGANY SINGLE DRAWER SIDE TABLE

29 1/4 x 18 x 14 1/2 in.

Estimate: \$ 400.00 - \$ 600.00



Lot #104: FEDERAL MAHOGANY THREE-DRAWER SIDE TABLE

The overhanging top above three drawers with brass pulls, on square tapered legs; 29 x 19 x 18 1/2 in.

Estimate: \$ 300.00 - \$ 400.00



Lot #105: FEDERAL MAHOGANY WORK TABLE

The rectangular top with two hinged compartments, the carcass fitted with two drawers and raised on a turned stem and four downswept carved legs, ending in brass hairy paw casters; 30 x 25 1/4 x 13 1/4 in.

Estimate: \$ 700.00 - \$ 900.00



Lot #106: FEDERAL MAHOGANY WORK TABLE

29 1/4 x 24 1/2 x 15 1/4 in.

Estimate: \$ 100.00 - \$ 200.00



Lot #107: FEDERAL CARVED MAHOGANY PEMBROKE TABLE

With two rectangular leaves, single frieze drawer on tapered molded legs joined by x-stretcher; 28 3/4 x 31 3/4 x 22 in.

Estimate: \$ 600.00 - \$ 800.00



Lot #108: FEDERAL MAHOGANY WORK TABLE

The rectangular top with two lidded storage compartments above a frieze fitted with three line-inlaid drawers, raised on line-inlaid square tapering legs; 28 3/4 x 28 1/2 x 13 3/4 in.

Estimate: \$ 700.00 - \$ 900.00



Lot #109: FEDERAL INLAID MAHOGANY BOW-FRONTED CHEST OF DRAWERS

The top with flame inlaid edge above four-drawers with fruitwood stringing and brass oval drop handles, flanked by canted corners, bracket feet; 36 1/2 x 41 1/4 x 22 1/4 in.

Estimate: \$ 700.00 - \$ 900.00



Lot #110: FEDERAL MAHOGANY BOW-FRONTED CHEST OF DRAWERS
The slightly overhanging top with inlaid edge above a carcass fitted with four drawers, on reeded supports ending in turned feet; 38 1/2 x 45 x 24 in.
Estimate: \$ 1000.00 - \$ 1500.00

[To Top](#)



Lots 111 - 120



Lot #111: NEW ENGLAND FEDERAL INLAID MAHOGANY BOW-FRONT CHEST OF DRAWERS

The front edge with feathered banding, above 4 cock-beaded drawers with fruitwood stringing, shaped apron and splayed bracket feet; 39 x 41 1/2 x 22 1/2 in.

Estimate: \$ 2000.00 - \$ 4000.00



Lot #112: DWARF TALL CASE CLOCK

The movement signed "Wilder," 46 1/2 x 10 1/4 x 6 1/8 in.

Estimate: \$ 2000.00 - \$ 3000.00



Lot #113: FEDERAL PAINTED AND STENCILED BENCH

The double top rail with floral cluster above spindles, the shaped seat on turned legs joined by stretchers; 35 in. x 5 ft. 10 1/4 in.

Estimate: \$ 800.00 - \$ 1200.00



Lot #114: PENNSYLVANIA WALNUT CANDLESTAND

The shaped rectangular top on a birdcage support, raised on a turned stem and terminating in pad feet; 28 1/2 x 18 1/4 x 15 1/2 in.

Estimate: \$ 700.00 - \$ 900.00



Lot #115: PENNSYLVANIA CHIPPENDALE WALNUT DIMINUTIVE DESK ON FRAME

The slant front opening to pigeonholes and drawers above a molded drawer with brass bat's wing drop handles, the lower part with two drawers on tapered legs; 34 1/4 x 27 3/4 x 15 in.

Estimate: \$ 500.00 - \$ 700.00



Lot #116: PENNSYLVANIA-STYLE CHIPPENDALE WALNUT LOWBOY

29 1/4 x 33 x 20 in.

Estimate: \$ 400.00 - \$ 600.00



Lot #117: CHIPPENDALE TIGER MAPLE LOWBOY

Comprised of old elements; 28 1/4 x 28 1/4 x 17 1/2 in.

Estimate: \$ 500.00 - \$ 700.00



Lot #118: CHIPPENDALE MAHOGANY CHEST OF DRAWERS

The thumb molded top above a case fitted with 4 drawers and raised on bracket feet; 32 7/8 x 36 7/8 x 19 1/4 in.

Estimate: \$ 800.00 - \$ 1200.00



Lot #119: SET OF FOUR CHIPPENDALE-STYLE LADDERBACK SIDE CHAIRS

Estimate: \$ 300.00 - \$ 500.00



Lot #120: CHIPPENDALE WALNUT SLANT FRONT DESK

The lid opening to reveal a fitted interior, the case fitted with 2 short and 2 long drawers raised on bracket feet; 40 x 36 x 19 1/2 in.

Estimate: \$ 1000.00 - \$ 2000.00

[To Top](#)



Lots 121 - 130



Lot #121: MASSACHUSETTS CARVED MAHOGANY LONG CASE CLOCK
The 12 in. English painted metal breakarch dial with 2 keywind apertures and day-of-the-month crescent and now bearing the inscription, "Simon Willard" the reverse molded "Osbornes Manufactory," the hood with pierced panel and 3 brass finials, the trunk with molded breakarch door and 1/4-round fluted pilasters with brass capitals and brass, block base ogee bracket feet; 7 ft. 8 in.

Estimate: \$ 2000.00 - \$ 4000.00



Lot #122: NEW ENGLAND LATE FEDERAL CHERRY BUTLER'S SECRETAIRE

The case containing 3 short cock-beaded drawers with brass pulls, above a fitted fall-front secretaire drawer and 3 lower drawers, with brass oval drop handles, bracket feet; 4 ft. 1/2 in. x 45 1/4 in. x 20 3/4 in.

Estimate: \$ 1000.00 - \$ 1500.00



Lot #123: NEW ENGLAND LATE FEDERAL CARVED MAHOGANY CHEST OF DRAWERS

The rectangular top with outset round front corners and molded edge, above 4 cock-beaded drawers flanked by spiral-reeded corners with leafy capitals, on turned feet; 38 3/8 x 42 x 19 1/2 in.

Estimate: \$ 800.00 - \$ 1200.00



Lot #124: LATE FEDERAL MAHOGANY CARD TABLE

With revolving fold over top above a turned stem with carving and four downswept legs ending in brass casters; 29 x 37 1/2 x 18 in.

Estimate: \$ 700.00 - \$ 900.00



Lot #125: LATE FEDERAL MAHOGANY BOOKCASE CABINET

The swan's neck crest with finials above a pair of thirteen-pane glazed doors, the lower part with two frieze drawers with repoussé brass pulls above two doors flanked by 1/2-round reeded pilasters, turned legs; 8 ft. 1 1/2 in. x 47 in. x 23 in.

Estimate: \$ 500.00 - \$ 700.00



Lot #126: PAIR OF NEW ENGLAND QUEEN ANNE CHERRY SIDE CHAIRS

Each serpentine top rail above baluster splat with pierced neck, the drop-in seat on cabriole legs ending in spanish feet and joined h-stretcher; 41 1/2 in. high

Estimate: \$ 400.00 - \$ 600.00



Lot #127: CLASSICAL MAHOGANY CARD TABLE

30 X 48 1/2 X 24 IN.

Estimate: \$ 250.00 - \$ 450.00



Lot #128: CLASSICAL MAHOGANY BOOKCASE ON STAND

The overhanging cornice above a pair of 1/4-veneered doors, the stepped lower part with arched three-drawer case, on bobbin-turned legs; 6 ft. 11 1/2 in. x 4 ft. 2 1/2 in. x 13 3/4 in.

Estimate: \$ 1000.00 - \$ 1500.00



Lot #129: AMERICAN CLASSICAL GILTWOOD PIER MIRROR

Possibly by Oliver Platt, Albany; 5 ft 1/2 in. x 34 1/2 in.

Estimate: \$ 1000.00 - \$ 1500.00



Lot #130: CLASSICAL MAHOGANY CANTERBURY

Lyre-form supports with four divisions raised on a base and block feet and brass casters; 18 1/2 x 19 x 13 1/4 in.

Estimate: \$ 300.00 - \$ 500.00

[To Top](#)



Lots 131 - 140



Lot #131: EMPIRE MAHOGANY NEWEL POST

41 x 7 1/2 x 12 1/2 in.

Estimate: \$ 200.00 - \$ 400.00



Lot #132: AMERICAN RENAISSANCE REVIVAL MARQUETRY-INLAID ROSEWOOD SIDE CABINET

The shaped white marble top above two frieze drawers, and a pair of doors with nesting bird ovals, gilt-incised pilasters and concave sides, on a plinth, 42 1/4 in. x 5 ft. 7 in. x 19 1/2 in.; underside of marble inscribed in pencil "From Herts Brothers."

Estimate: \$ 2000.00 - \$ 3000.00



Lot #133: PAIR OF AMERICAN RENAISSANCE REVIVAL GILT-METAL AND PORCELAIN-MOUNTED ROSEWOOD SIDE CHAIRS

Each shaped top rail with oval figural plaque and bead and mons-cast rondels, the seat on incised rails and tapered legs ending in casters; 37 3/4 x 21 in.

Estimate: \$ 300.00 - \$ 500.00



Lot #134: AMERICAN ROSEWOOD CHEST OF DRAWERS WITH MARBLE TOP

The top with outset front corners above three drawers with applied moldings and recessed pulls, 1/2-round foliate-carved pilasters on turned feet; 32 in. x 4 ft. 1 in. x 26 1/2 in.

Estimate: \$ 400.00 - \$ 600.00



Lot #135: ROSEWOOD LAMINATED SIDE CHAIR

Estimate: \$ 300.00 - \$ 500.00



Lot #136: VICTORIAN MAHOGANY HANGING BOTTLE RACK

The bow-fronted three-bottle level above two shelves on shaped supports; 11 x 16 x 5 in.

Estimate: \$ 100.00 - \$ 200.00



Lot #137: VICTORIAN MAHOGANY DAYBED

28 in. tall, 6 ft. 2 in. long.

Estimate: \$ 300.00 - \$ 500.00



Lot #138: SHAKER STAINED WOOD LADDER BACK SIDE CHAIR

The arched top rail and 2 horizontal splats or turned upright, with lemon finials, the webbed seat on turned legs joined by stretchers; 43 1/2 in. tall.

Estimate: \$ 300.00 - \$ 500.00



Lot #139: MINIATURE SHAKER DIORAMA

10 1/2 x 19 3/4 x 11 in.

Estimate: \$ 800.00 - \$ 1200.00



Lot #140: ENGRAVED GLASS AND SILVER-PLATED HEXAGONAL COACH LANTERN

With alternating red, blue and clear glass panels with central monogram and diamond engraving, grape cluster cast corner clasp, dome with eagle finial, on swing handle; 14 1/2 x 7 1/2 in. (to finial.)

Estimate: \$ 300.00 - \$ 400.00

[To Top](#)



Lots 141 - 150



Lot #141: AMERICAN BRASS-PLATED SINGLE-LIGHT STUDENT'S LAMP

The spindle stem with adjustable cross arm incorporating cylindrical well and light with plated green glass shade; 20 3/8 x 12 in.

Estimate: \$ 200.00 - \$ 300.00



Lot #142: CHESTER GARDE SCRAPBOOK

Including 48 watercolor studies for Christmas and birthday cards, variously inscribed C.I.G., Garde, Chet, Chester Garde, with photograph of cartoonist, a page from "Life" with a cartoon by Chester Ivers Garde & S.C., 13 3/4 x 10 3/4 in.

Estimate: \$ 300.00 - \$ 500.00



Lot #143: WILLIAM GLACKENS (1870-1938), PENCIL SKETCH

9 1/4 X 7 3/8 in. (sight).

Estimate: \$ 100.00 - \$ 200.00



Lot #144: AMERICAN SCHOOL, PORTRAIT SKETCH

Ink on paper, 12 x 9 3/4 in. (image), with pencil signature lower right CD Gibson.

Estimate: \$ 200.00 - \$ 300.00



Lot #145: AMERICAN SCHOOL, BAREFOOT GIRL

Charcoal on paper, 23 3/4 x 18 1/4 in. (sight), signed lower right N.C. Wyeth.

Estimate: \$ 300.00 - \$ 500.00



Lot #146: LEON MORAN (1864-1941), ELEGANT GIRL WITH PINK ROSES
 Watercolor on paperboard, 21 x 14 1/4 in., (image), signed and dated lower left "Leon Moran 1905."
 Estimate: \$ 400.00 - \$ 600.00



Lot #147: WALT KUHN (1880-1949), FIVE DRAWINGS
 Ink on paper, the largest measures 11 1/8 x 15 3/8 in.; each signed "Walt Kuhn" and dated 1929, 1930 or 1935.
 Estimate: \$ 700.00 - \$ 900.00



Lot #148: ABRAHAM WALKOWITZ (1878-1965), ISADORA IN YELLOW
 Watercolor on paper, mounted on blue posterboard, 14 x 9 in., signed lower left "A. Walkowitz."
 Estimate: \$ 400.00 - \$ 600.00



Lot #149: ABRAHAM WALKOWITZ (1878-1965), ISADORA IN GREEN
 Watercolor on paper mounted on brown posterboard, 14 x 9 in., signed lower left "A. Walkowitz."
 Estimate: \$ 400.00 - \$ 600.00



Lot #150: GUY PENE DU BOIS (1884-1958), PENSIVE GIRL
 Pencil on paper, 13 3/4 x 10 1/2 in. (sight), signed and dated lower right "Guy Pène du Bois '38." Exhibited 2/8 - 3/4, 2000 at James Graham & Sons.
 Estimate: \$ 500.00 - \$ 700.00

[To Top](#)



Lots 151 - 160



Lot #151: GUY PENE DU BOIS (1884-1958), MAN WITH WHEELBARROW

Ink on paper, 8 3/4 x 7 1/4 in., initialed and dated lower right "G. B. 04."

Exhibited Feb.8-Mar.4, 2000 at James Graham & Sons.

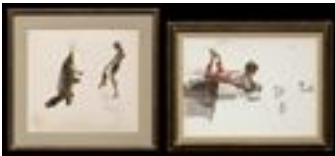
Estimate: \$ 300.00 - \$ 500.00



Lot #152: FAIRFIELD PORTER (1907-1975)

Lithograph on paper, 13 1/2 x 9 1/4 in., signed and numbered lower left "Fairfield Porter 13/85."

Estimate: \$ 300.00 - \$ 500.00



Lot #153: JOHN CHUMLEY (1928-1984) BOY WITH SNAPPING TURTLE & BONNIE WITH GEESE

Watercolor studies, 22 x 23 1/2 in. and 21 x 28 in., both signed "Chumley," together with two small color prints of the finished paintings (2 1/2 x 6 in. and 4 1/8 x 5 3/8 in.). From the Estate of John P. Morgan II.

Estimate: \$ 1000.00 - \$ 1500.00



Lot #154: FREDERIC REMINGTON (1861-1909), CHEYENNE BUCK

Color lithograph, 18 5/8 x 14 3/4 in. (sight), signed and dated in the plate "Frederic Remington/1901," from the "Buckskin" series.

Estimate: \$ 1000.00 - \$ 1500.00



Lot #155: AFTER WHISTLER, SAVOY PIGEONS 1896

Lithograph, 8 3/4 x 6 1/2 in. (sight).

Estimate: \$ 200.00 - \$ 300.00



Lot #156: AFTER WHISTLER, THE DOORWAY

Print on paper, 13 1/4 x 18 3/4 in. (sight).

Estimate: \$ 100.00 - \$ 200.00



Lot #157: CHAUNCY F. RYDER (1868-1949), EUROPEAN SCENE

Watercolor on paper laid down on cardboard, 18 1/4 x 24 in.; signed lower left "Chauncy F. Ryder."

Estimate: \$ 500.00 - \$ 700.00



Lot #158: AMERICAN SCHOOL, VEGETABLE GARDEN AND APPLE TREE

Watercolor on paper, 13 1/2 x 19 1/2 in. (image, sight), initialed and dated lower right "CWB / 1896."

Estimate: \$ 500.00 - \$ 700.00



Lot #159: ATTRIBUTED TO CHARLES BURCHFIELD (1893-1967), PENCIL SKETCH

10 1/2 X 8 1/8 in., dated 6-21-15 and with color notations.

Estimate: \$ 400.00 - \$ 600.00



Lot #160: EDMUND DARCH LEWIS (1835-1910), HOUSE IN THE COUNTRY

Watercolor on paper, 11 1/2 x 25 in. (image, sight).

Estimate: \$ 1500.00 - \$ 2000.00

[To Top](#)



Lots 161 - 170



Lot #161: FAIRFIELD PORTER (1907-1975), "SIXTH AVENUE 1"

Color lithograph, 21 x 28 1/4 (image, sight), signed, titled and numbered 53/60 in pencil below image. Printed by Bank Street Atelier (blind stamp below artist's signature).

Estimate: \$ 1500.00 - \$ 2500.00



Lot #162: ADOLF DEHN (1895-1968), TWO VIEWS IN CENTRAL PARK

Lithographs on paper, 13 1/2 x 12 in. and 19 1/8 x 18 3/4 in., (margins trimmed), both signed and dated in the plate "Adolph Dehn 1927."

Estimate: \$ 50.00 - \$ 75.00



Lot #163: AMERICAN SCHOOL, DOE AND FAWNS IN A LANDSCAPE

Pencil on paper, 9 3/4 x 14 in. (sight).

Estimate: \$ 100.00 - \$ 200.00



Lot #164: AMERICAN SCHOOL, ANIMAL SKETCHES

Pencil on sepia paper, 2 with chalk highlights, 8 3/8 x 10 3/4 to 10 3/8 x 14 5/8, each signed "Wm. duPont" and dated 1870 or 1871.

Estimate: \$ 300.00 - \$ 500.00



Lot #165: AMERICAN SCHOOL, TIGER-STRIPED CAT

Pastel on blue paper, 9 3/4 x 13 3/4 in. (sight), signed and dated lower right "J Hallet/85."

Estimate: \$ 200.00 - \$ 300.00



Lot #166: RUFUS F. ZOGBAUM (1849-1925), SHIPS LEAVING PORT

Watercolor on paper, 11 3/4 x 17 5/8 in. (sight), signed and dated lower left "R. F. Zogbaum/98."

Estimate: \$ 400.00 - \$ 600.00



Lot #167: GEORGE HOWELL GAY (1858-1931), COASTAL VIEW

Watercolor on paper, 17 x 27 1/4 in. (image, sight), signed lower left "Geo. Howell Gay."

Estimate: \$ 700.00 - \$ 900.00



Lot #168: FRANK BOGGS (1855 - 1926), MOONLIGHT HARBOR & "GENESEE FALLS"

Watercolors on paper, 6 3/8 x 4 3/8 in. and 6 1/2 x 9 1/2 in. (sight), both signed.

Estimate: \$ 500.00 - \$ 700.00



Lot #169: EDMUND DARCH LEWIS (1835-1910), COASTAL SCENE

Watercolor on paper, 6 5/8 x 14 1/2 in. (sight), signed and date lower right "Edmund Darch Lewis 1903."

Estimate: \$ 400.00 - \$ 600.00



Lot #170: HENRY GASSER (1909-1981), AT THE SHORE

Watercolor on paper, 8 1/2 x 12 3/8 in. (image, sight), signed lower left "H Gasser."

Estimate: \$ 400.00 - \$ 600.00

[To Top](#)



Lots 171 - 180



Lot #171: SAMUEL R. CHAFFEE (b. 1850), COASTAL SCENE

Watercolor on paper, 15 3/4 x 26 in. (sight), signed lower left "S. R. Chaffee."

Estimate: \$ 300.00 - \$ 500.00



Lot #172: AMERICAN SCHOOL, COASTAL VIEW

Watercolor on paper, 10 x 13 3/4 in. (sight), signed lower right WT Richards.

Estimate: \$ 200.00 - \$ 300.00



Lot #173: AMERICAN SCHOOL, ROCKY COAST

Watercolor on paper, 7 3/4 x 13 1/4 in. (sight), signed lower left Wm T. Richards.

Estimate: \$ 200.00 - \$ 300.00



Lot #174: CHAIM GROSS (1904-1991), PROVINCETOWN FISHERMAN

Watercolor on paper, 22 x 28 in. (sight), signed and dated lower right "Chaim Gross/'53," with Weintraub Gallery label on verso.

Estimate: \$ 600.00 - \$ 800.00



Lot #175: AMERICAN SCHOOL, ROCKPORT HARBOR, MAINE

Watercolor on paper, 18 1/2 x 25 1/2 in. (sight), signed lower right "LH Butcher AWS."

Estimate: \$ 400.00 - \$ 600.00



Lot #176: TWO HAWAIIAN KOA WOOD BOWLS

6 3/4 and 7 1/4 in. high, 14 1/2 and 11 1/2 in. diam.

Estimate: \$ 400.00 - \$ 600.00



Lot #177: LARGE INCISED WOOD BOWL

Possibly Hawaiian, the exterior with concentric bands; 10 1/2 in. high, 33 in. diam.

Estimate: \$ 300.00 - \$ 400.00



Lot #178: LARGE DUGOUT CANOE, POSSIBLY HAWAIIAN

21 in. x 11 ft. 10 in. x 15 in.

Estimate: \$ 700.00 - \$ 900.00



Lot #179: ESKIMO CARVED STONE FIGURE GROUP

Carved as a squatting hunter with right arm around a seal, apparently unsigned; 6 x 12 in.

Estimate: \$ 250.00 - \$ 350.00



Lot #180: GROUP OF TWELVE ESKIMO CARVED BONE MINIATURE FIGURES

Comprising five whales, polar bear with seal, two seated seals and four ducks; 1 to 4 1/4 in. long.

Estimate: \$ 200.00 - \$ 400.00

[To Top](#)



Lots 181 - 190



Lot #181: ESKIMO CARVED PALE GREEN STONE HEAD

6 1/2 X 17 in.

Estimate: \$ 150.00 - \$ 250.00



Lot #182: ESKIMO CARVED STONE FIGURE OF A SEAL HUGGING A MAN

11 X 11 1/4 in.

Estimate: \$ 250.00 - \$ 450.00



Lot #183: ESKIMO CARVED STONE FIGURE OF A BEAR

Walking with raised head and outstretched arms; 10 x 11 1/2 in.

Estimate: \$ 250.00 - \$ 450.00



Lot #184: ESKIMO CARVED FIGURE OF A SEAL

With raised paw and head turned to back; 11 1/2 x 15 1/2 x 7 1/2 in.

Estimate: \$ 300.00 - \$ 500.00



Lot #185: PENOBSCOT INDIAN BASKET

Of oval outline, with stepped interior, stained bands, arch handle, the exterior with outset curls; 11 x 15 1/2 in.

Estimate: \$ 100.00 - \$ 200.00



Lot #186: SOUTHWEST INDIAN COILED BASKET

Of cylindrical outline with two sawtooth and central crenellated bands; 9 1/4 in. high, 10 1/2 in diam.

Estimate: \$ 300.00 - \$ 500.00



Lot #187: INDIAN TWINED "SKULL CAP" BASKET

With stacking triangle band; 3 in. tall, approx. 6 1/4 in. diam.

Estimate: \$ 200.00 - \$ 300.00



Lot #188: ACOMA POT

With terracotta and amber stepped bands on cream ground; 4 5/8 in. high, 7 1/4 in. diam.

Estimate: \$ 300.00 - \$ 500.00



Lot #189: BOLIVIAN POTTERY BOWL

Of squat spherical form with terracotta stepped band; 4 1/4 in. high, 6 3/4 in. diam.

Estimate: \$ 100.00 - \$ 200.00



Lot #190: SOUTHWEST POTTERY POT

With sloping shoulder, bands of waves and stylized flowers; 10 1/4 in. high, 11 in. diam.

Estimate: \$ 500.00 - \$ 700.00

[To Top](#)



Lots 191 - 200



Lot #191: INDIAN SHELL NECKLACE

Estimate: \$ 40.00 - \$ 80.00



Lot #192: NAVAJO TURQUOISE AND CORAL SILVER BRACELET

The quatrefoil front with 4 shaped turquoise mounts and coral "worm" mount, applied coils; 3 1/4 x 3 x 1 3/4 in.

Estimate: \$ 100.00 - \$ 200.00



Lot #193: NAVAJO SILVER-MOUNTED LEATHER CONCHA

Incorporating seven sawtooth ovals and a buckle pierced with dots, and with engraved "rope" band; 4 ft. 4 1/2 in.

Estimate: \$ 700.00 - \$ 900.00



Lot #194: NAVAJO TURQUOISE-MOUNTED SILVER CONCHA

Incorporating eight lobed ovals with raised reeding and engraved "rope" band, and the angular buckle with rays and engraved loop bands; 43 1/2 in.

Estimate: \$ 400.00 - \$ 600.00



Lot #195: INDIAN PAINTED COTTON SHIRT

The yellow ground with black necklace and crosses, green lower border and fringe; 30 in. long.

Estimate: \$ 100.00 - \$ 200.00



Lot #196: PAIR OF INDIAN BEAD AND RAWHIDE WOMAN'S MOCCASINS

Each with white and green cross on sky blue ground; 9 1/4 in. long.

Estimate: \$ 150.00 - \$ 250.00



Lot #197: NATIVE AMERICAN PAINTED CLOTH PANEL

6 ft. 11 in. long, sewn onto a linen liner. Provenance: Sotheby's sale 7066, lot 448.

Estimate: \$ 800.00 - \$ 1200.00

Lot #198: NO LOT

Lot #199: NO LOT



Lot #200: NAVAJO WOOL CARPET

The abrashed gray field worked with interlocking stepped brown and rose bands, latched border; approx. 8 ft. 10 in. x 6 ft. 4 in.

Estimate: \$ 600.00 - \$ 800.00

[To Top](#)

