

Lots 1 - 10



Lot #1: AMERICAN SCHOOL, STILL LIFE IN THE MANNER OF SEVERIN ROESEN

Oil on canvas, signed & dated lower right, A. Schmahl N.Y. 1859.

Estimate: \$ 2000.00 - \$ 3000.00



Lot #2: A. CLARE (BRITISH, 19TH c.), STILL LIFE WITH FRUIT

Oil on canvas, (possibly relined), 12 1/8 x 15 7/8 in., signed lower left, A. Clare.

Estimate: \$ 3000.00 - \$ 5000.00



Lot #3: AMERICAN SCHOOL, STILL LIFE WITH ORIENTAL OBJECTS

Oil on canvas, 22 x 20 in. relined, signed lower left, V. Drake.

Estimate: \$ 600.00 - \$ 800.00



Lot #4: WILMA PREZZI (1915-1964), "WOODEN MAITREYA"

Oil on canvas, 36 x 30 in. signed lower right, Prezzi; exhibited at the de Young Museum, "Paintings of Oriental Objects."

Estimate: \$ 1000.00 - \$ 1500.00



Lot #5: LUIGI LUCIONI (1900-1988), "THE CHINESE ROOM AT LAURELTON HALL"

Oil on canvas, 24 x 20 in, signed & dated lower right, L. Lucioni 1928 & inscribed on the verso: "This painting was done at the Tiffany Foundation in 1928 in the Chinese Room at Laurelton Hall. Luigi Lucioni" Note: the artist received a Tiffany Foundation Scholarship in 1922 that enabled him to study painting in Italy.

Estimate: \$ 7000.00 - \$ 9000.00



Lot #6: JULIA MCENTEE DILLON (1834-1918), STILL LIFE WITH YELLOW ROSES

Oil on canvas, 18 x 14 in., signed lower right, Dillon.

Estimate: \$ 4000.00 - \$ 6000.00



**Lot #7: GEORGE LAURENCE NELSON (1887-1978),
STILL LIFE WITH ROSES AND LUSTREWARE**

Oil on artistboard, 14 1/4 x 10 1/4 in., signed & dated lower left, GL Nelson/1972.

Estimate: \$ 700.00 - \$ 900.00



**Lot #8: GEORGE LAURENCE NELSON (1887-1978),
"HELEN WITH POPPIES"**

Oil on canvas, 45 x 35 in., signed lower right, G.L. Nelson & with exhibition labels on stretcher from The National Academy of Design, Grand Central Galleries, Pennsylvania Academy of Fine Arts (1928) & American Federation of Arts.

Estimate: \$ 5000.00 - \$ 7000.00



**Lot #9: CECIL KENNEDY (1905-1997),
CHRYSANTHEMUMS IN A GLASS VASE**

Oil on canvas, 24 x 18 in., signed & dated lower right, Cecil Kennedy/68.

Estimate: \$ 3000.00 - \$ 5000.00



Lot #10: WALT KUHN (1877-1949), STILL LIFE WITH FRUIT

Oil on canvas, the edges reinforced, 12 1/4 x 15 1/4 in., signed lower right, Walt Kuhn.

Estimate: \$ 9000.00 - \$ 12000.00

[To Top](#)



Lots 11 - 20



Lot #11: CHARLES MELVILLE DEWEY (1849-1937), ON THE MARSHES, LONG ISLAND

Oil on panel en grisaille, 10 3/16 x 16 1/16, signed lower left, Charles Melville Dewey

Estimate: \$ 700.00 - \$ 900.00



Lot #12: WILLIAM MERRITT POST (1856-1935), AUTUMN LANDSCAPE

Oil on canvas, 30 x 40 in., signed lower left, W. Merritt Post.

Estimate: \$ 2500.00 - \$ 3500.00



Lot #13: AMERICAN SCHOOL, CHAMPLAIN VALLEY LANDSCAPE WITH SHEEP

Oil on canvas, 9 x 16 in., unsigned.

Estimate: \$ 150.00 - \$ 250.00



Lot #14: AMERICAN SCHOOL, WINTER AT THE FARM

Oil on artist board, 23 x 27 1/4 in., signed lower left HW King.

Estimate: \$ 400.00 - \$ 600.00



Lot #15: HUDSON RIVER SCENE, AFTER THOMAS CHAMBERS

Oil on canvas, unsigned. 17 3/4 x 23 3/4 in.

Estimate: \$ 400.00 - \$ 600.00



Lot #16: LEVI WELLS PRENTICE (1851-1935), "THOUSAND ISLANDS ALEXANDRIA BAY, ST. LAWRENCE RIVER, NEW YORK"

Oil on artistboard, 10 x 13 3/4 in., signed lower right, LW Prentice & titled on the verso.

Estimate: \$ 7000.00 - \$ 10000.00



Lot #17: ARTHUR PARTON (1842-1914), HUDSON VALLEY VISTA

Oil on canvas, 28 x 38 in., signed lower right, Arthur Parton.

Estimate: \$ 8000.00 - \$ 12000.00



Lot #18: WILLIAM C. FITLER (1857-1915), CHARLES RIVER SCENE

Oil on canvas in grisaille, 14 1/2 x 23 in., signed lower left, WC Filter 184.

Estimate: \$ 2000.00 - \$ 3000.00



Lot #19: ARTHUR CLIFTON GOODWIN (1864-1929), CUSTOMS HOUSE FROM T-WHARF, BOSTON

Oil on canvas, 38 1/4 x 44 1/4 in., signed lower right, A. C. Goodwin.

Estimate: \$ 10000.00 - \$ 15000.00



Lot #20: S.G. MANIATTY (b. 1910), "ARNOLDS WHARF, EAST GLOUCESTER"

Oil on canvas, 20 x 24 in. signed lower right, titled & signed on verso.

Estimate: \$ 600.00 - \$ 800.00



Lot #20A: ALDRO T. HIBBARD/1918, WINTER SCENE

Oil on canvas, 18 x 22, signed and dated lower right, A.T. Hibbard/1918

Estimate: \$ 4000.00 - \$ 6000.00

[To Top](#)



Lots 21 - 30



**Lot #21: HOWARD LOGAN HILDEBRANDT (1872-1958),
PORT SCENE**

Oil on wood panel, 10 x 8 in., signed lower left H.L.
Hildebrandt.

Estimate: \$ 400.00 - \$ 600.00



**Lot #22: J.W. MCINTYRE (1841-1897), VILLAGE ON
THE COAST**

Oil on canvas, 24 x 37 in., signed lower right, J.W.
McIntyre.

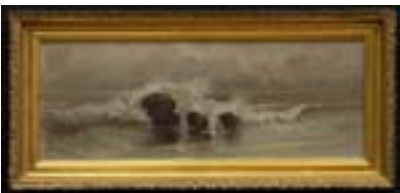
Estimate: \$ 2000.00 - \$ 3000.00



**Lot #23: HOWARD E. SMITH (1885-1970), GATHERING
KELP**

Watercolor on paper, 18 3/8 x 24 1/2 in. (sight), signed
lower left, Howard E. Smith.

Estimate: \$ 400.00 - \$ 600.00



**Lot #24: SARAH E. HARVEY (1834-1924), CRASHING
WAVES**

Oil on artistboard laid down on masonite, 9 1/4 x 24 9/16
in., dated & signed lower left, 1902 SE Harvey.

Estimate: \$ 300.00 - \$ 500.00



Lot #25: WILLIAM LEWELLYN (1858-1941), PEACEFUL SEA

Oil on paper (or paperboard), 12 1/4 x 15 3/4 in., (sight), signed lower right, W. Lewellyn.

Estimate: \$ 1500.00 - \$ 2500.00



Lot #26: BENSON BOND MOORE (1882-1974), "FLORIDA'S ENCHANTED LAKE"

Oil on canvas, 18 1/8 x 24 1/8 in., signed lower left, B. Moore & titled on the stretcher.

Estimate: \$ 1000.00 - \$ 1500.00



Lot #27: FREDERICK JUDD WAUGH (1861-1940), "THE CARIBBEAN"

Oil on canvas, 12 7/8 x 19 1/8 in., signed lower right, Waugh. Titled on a Grand Central Art Galleries label on verso & notated, "painted from the sea direct."

Estimate: \$ 10000.00 - \$ 15000.00



Lot #28: ANDREW T. SCHWARTZ (1867-1942), ROLLING HILLS

Oil on canvas, relined, 31 x 34 3/8 in., signed lower left, Andrew T. Schwartz.

Estimate: \$ 1500.00 - \$ 2500.00



Lot #29: ELMER L. MACRAE (1875-1953), COS COB HARBOR FROM THE BUSH-HOLLEY HOUSE

Oil on canvas, 27 1/4 x 27 1/4 in., relined, signed lower right, EL Macrae. Provenance: Greenwich Historical Society auction to the family of the present owner, 1959.

Estimate: \$ 4000.00 - \$ 6000.00



Lot #30: GEORGE H. MCCORD (1848-1909), STORMY EVENING

Oil on canvas, 20 x 16 in., signed lower right, GH McCord.

Estimate: \$ 1200.00 - \$ 1800.00

[To Top](#)



Lots 31 - 40



Lot #31: AMERICAN SCHOOL, PRIMITIVE WINTER SCENE

Oil on canvas, 18 1/4 x 24 in., signed & dated lower right
PA Winzer Feb 1952.

Estimate: \$ 300.00 - \$ 500.00



Lot #32: CARL WUERMER (1900-1982), NEW ENGLAND WINTER

Oil on canvas, 22 1/16 x 28 1/16 in. signed lower left,
Carl Wuermer & dedicated & dated 1980 on the stretcher.

Estimate: \$ 800.00 - \$ 1200.00



Lot #33: ALFRED VICKERS SR. (1786-1868), VIEW OF LOUGH CORRA LYNN

Oil on canvas, 16 1/2 x 27 in., signed & dated lower left,
A. Vickers 1862.

Estimate: \$ 1500.00 - \$ 2500.00



Lot #34: EUROPEAN SCHOOL, PANORAMIC SCENE

Oil on canvas, 21 x 28 in. signed indistinctly lower right.

Estimate: \$ 200.00 - \$ 300.00



Lot #35: NORTHERN EUROPEAN SCHOOL, LANDSCAPE WITH FIGURES AND DISTANT COTTAGE

Oil on canvas, relined, 28 1/4 x 38 in., unsigned.

Estimate: \$ 2000.00 - \$ 4000.00



Lot #36: BULL AND COWS IN A LANDSCAPE, ATTRIB. TO E.A. WILLIS (1808-1899)

Oil on canvas, relined, 14 1/8 x 20 1/8 in.

Estimate: \$ 1000.00 - \$ 1500.00



Lot #37: ILDEPHONSE STOCQUART (1819-1899), PASTORAL LANDSCAPE

Oil on panel, 15 1/4 x 20 in., signed lower left, Ild Stocquart.

Estimate: \$ 1000.00 - \$ 2000.00



Lot #38: BRITISH SCHOOL, GROWLING DOGS (AFTER MORLAND)

Oil on canvas, 17 3/8 x 22 1/4 in., unsigned.

Estimate: \$ 800.00 - \$ 1200.00



Lot #39: PHILLIP RIDEOUT (1860-1920), PAIR OF COACHING SCENES

Oil on paperboard, 5 5/8 x 9 1/4 in., (sight), signed & dated lower right, P. Rideout 1892.

Estimate: \$ 800.00 - \$ 1200.00



Lot #40: JAMES CLARK (act. 1858 - 1909), WHITE HORSE IN A STALL

Oil on canvas, relined, 19 3/4 x 24 in., signed lower left James Clark & Son.

Estimate: \$ 3000.00 - \$ 5000.00

[To Top](#)



Lots 41 - 50



Lot #41: HANS KLAUSSE (19th c.), STEEPLECHASE
Oil on canvas, 14 1/2 x 21 in. signed lower right, Hans Klausse.

Estimate: \$ 500.00 - \$ 700.00



Lot #42: THOMAS S. LAFONTAINE (b. 1915), THREE YELLOW LABS WITH WARKWORTH CASTLE IN THE DISTANCE

Oil on canvas, 26 x 40 in. signed lower right, T.S. LaFontaine.

Estimate: \$ 2000.00 - \$ 3000.00



Lot #43: J. ORLOFF (19th C.), PAIR OF PAINTINGS: TROIKAS IN SNOW

Oil on mahogany panel, each 6 1/4 x 12 1/2 in., both signed J. Orloff & with label on verso, No. 1051 Motiv aus Russland.

Estimate: \$ 2000.00 - \$ 3000.00



Lot #44: BRITISH SCHOOL, "SAMSON"

Oil on canvas, 16 x 22 in., titled lower center, Samson; unsigned.

Estimate: \$ 800.00 - \$ 1200.00



**Lot #45: ETIENNE BERNE-BELLECOUR (1838-1910),
ON PATROL**

Oil on cradled panel, 14 x 17 3/4 in., signed & dated lower right, E. Berne-Bellecour 1895.

Estimate: \$ 2000.00 - \$ 3000.00



Lot #46: NEW ENGLAND MAPLE HIGHBOY

The slight overhanging cornice above a case fitted with two short & three long drawers above a conforming case fitted with three short drawers, the whole raised on cabriole legs & pad feet; 62 3/4 x 38 x 18 3/8 in.

Estimate: \$ 2000.00 - \$ 4000.00



**Lot #47: FEDERAL MAHOGANY & SATINWOOD
CYLINDER SECRETARY FROM THE WORKSHOP OF
JOHN & THOMAS SEYMOUR, BOSTON, CA. 1810-1815**

The 3/4 in. galleried top above cross banded roll top opening to drawers & pigeonholes, the frieze with two drawers, on reeded legs; 4 ft. 4 1/2 in. x 40 1/2 in. x 22 1/2 in.

Estimate: \$ 7000.00 - \$ 9000.00



Lot #48: FEDERAL CHERRY NIGHT STAND AND A MAPLE SIDE CHAIR

The overhanging top above a drawer, the curly maple chair with foliate carved splat & rush seat with figured maple. 28 1/2 x 17 3/4 x 18 in.

Estimate: \$ 250.00 - \$ 350.00



Lot #49: CHIPPENDALE INLAID MAHOGANY MIRROR
The frame with fruitwood & ebony stringing, shaped crest & base.

Estimate: \$ 500.00 - \$ 700.00



Lot #50: CHIPPENDALE CHERRY CHEST-OF-DRAWERS
The notched top above four cockbeaded drawers flanked by 1/4 round fluted pilasters, ogee bracket feet; 35 1/4 x 37 1/2 x 19 3/4 in.

Estimate: \$ 2000.00 - \$ 4000.00

[To Top](#)



Lots 51 - 60



Lot #51: CHIPPENDALE CARVED MAHOGANY SOFA
With triple lobed top rail, roll-over arms & molded legs joined by an H-stretcher; 37 1/4 in. x 7 ft. 2 in. x 28 1/2 in.

Estimate: \$ 2000.00 - \$ 3000.00



Lot #52: CHIPPENDALE CHERRY SLANT-FRONT DESK
Opening to small drawers & pigeonholes, above 4 molded drawers fitted with brass oval drop handles, bracket feet, 41 x 36 x 19 in.

Estimate: \$ 800.00 - \$ 1200.00



Lot #53: CHIPPENDALE MAHOGANY SERPENTINE FRONT CHEST-OF-DRAWERS

The overhanging top above four drawers with brass bat's-wing drop handles, on ogee bracket feet.

Estimate: \$ 5000.00 - \$ 7000.00



Lot #54: FEDERAL MAHOGANY FIVE-TIER ETAGERE
The block supports with ebonized ring turned top form finials, the base containing a drawer with wood pull; 5 ft. 3 1/2 in. x 19 1/2 in. x 15 3/4 in.

Estimate: \$ 1000.00 - \$ 1500.00



Lot #54A: LATE FEDERAL MAHOGANY TWO DRAWER NIGHT STAND
With turned wood pulls on swelling legs & shaped feet; 28 3/4 x 20 x 17 1/4 in.

Estimate: \$ 200.00 - \$ 300.00



**Lot #55: NEW ENGLAND CHIPPENDALE MAHOGANY
TALL CHEST-OF-DRAWERS**

The molded cornice above five molded drawers, on bracket feet, 4 ft. 4 1/2 in. x 40 3/4 in. x 19 3/4 in.

Estimate: \$ 1000.00 - \$ 1500.00



**Lot #56: FEDERAL CHERRY AND BIRD'S-EYE MAPLE
NIGHT STAND**

With two drop leaves & two cushion molded drawers with brass pulls, on turned legs; 28 3/4 x 16 x 17 in.

Estimate: \$ 400.00 - \$ 600.00

**Lot #57: MAPLE AND FIGURED MAPLE TILT-TOP
CANDLESTAND**

The angular serpentine top on column & vase stem &



tripod legs ending in snake feet; 28 7/8 x 16 1/2 x 17 1/4 in.

Estimate: \$ 800.00 - \$ 1200.00



Lot #58: CHIPPENDALE CHERRY TALL CHEST-OF-DRAWERS

The molded cornice above six drawers with incised borders & brass bat's-wing drop handles, bracket feet, 4 ft. 4 1/2 in. x 41 1/4 in. x 20 in.

Estimate: \$ 1800.00 - \$ 2200.00



Lot #59: FEDERAL CARVED MAPLE AND FIGURED MAPLE NIGHT STAND

The frieze drawer with brass pulls, flanked by outset ringed corners continuing into the reeded legs, 28 3/4 x 18 1/2 x 16 3/4 in.

Estimate: \$ 800.00 - \$ 1200.00



**Lot #60: MASSACHUSETTS FEDERAL MAHOGANY
GAMES TABLE**

The shaped folding top with reeded edge above a figured inlaid frieze with outset spool corners continuing into the reeded legs; 29 1/2 x 36 x 17 1/2 in.

Estimate: \$ 1500.00 - \$ 2500.00

[To Top](#)



Lots 61 - 70



Lot #61: FEDERAL CHERRY CANDLESTAND

The fixed top with notched corners, on ring turned & vase stem & tripod legs; 26 3/4 in. tall.

Estimate: \$ 2000.00 - \$ 4000.00



Lot #62: FEDERAL INLAID MAHOGANY BOW FRONTED CHEST-OF-DRAWERS

The top with inlaid edge above four cross banded drawers fitted with brass oval drop handles, on bracket feet; 38 1/2 x 41 x 22 in.

Estimate: \$ 1500.00 - \$ 2500.00



Lot #63: CHIPPENDALE MAPLE TALL CHEST-OF-DRAWERS

The molded top above 7 molded drawers fitted with brass drop handles on bracket feet; 4 ft. 10 1/2 in. x 41 in. x 20 1/2 in.

Estimate: \$ 1500.00 - \$ 2500.00



Lot #64: FEDERAL MAPLE TILT-TOP CANDLESTAND
With round corners on ring-turned & vase stem & hipped tripod legs; 28 1/2 in. tall.

Estimate: \$ 300.00 - \$ 500.00



Lot #64A: FEDERAL MAHOGANY STATIONERY BOX
The cross banded hinged lid above a case with recessed panels; 4 1/2 x 12 x 10 1/4 in.

Estimate: \$ 150.00 - \$ 250.00



Lot #65: FEDERAL MAHOGANY BOW-FRONTED CHEST-OF-DRAWERS

The top with string & cross banded inlaid edge, above four cockbeaded drawers with brass oval drop handles, splayed bracket feet; 34 1/2 x 41 1/4 x 23 in.

Estimate: \$ 2000.00 - \$ 4000.00



Lot #66: FRITZ G. VOGT (1842-1900), "RESIDENCE OF MR. LARKIN CHRISTMAN PALATINE, NY"

Pencil & colored pencil on paper, 17 5/8 x 28 3/8 in. (sight), signed lower right & dated lower left, August 8, 1894.

Estimate: \$ 8000.00 - \$ 12000.00



Lot #67: FRITZ G. VOGT, (1842-1900) "THE SHINAMAN HOMESTEAD MARSHVILLE NY"

Pencil and colored pencil on paper, 17 5/8 x 23 3/8 in. (sight), signed lower right & dated lower left, Nov. 26, 1894.

Estimate: \$ 7000.00 - \$ 9000.00



Lot #68: FRITZ G. VOGT (1842-1900), "RESIDENCE OF MR. HENRY GOODY, GLEN, NY"

Pencil & colored pencil on paper, 17 1/2 x 22 1/4 in. (sight), signed lower right & dated March 1894 lower left.

Estimate: \$ 2000.00 - \$ 3000.00



Lot #69: REGENCY STUMP AND NEEDLEWORK PICTURE

Showing a cavalier with drawn sword & a lady with a child, painted faces & hands, eglomise mat; 19 1/2 x 16 1/2 in.

Estimate: \$ 400.00 - \$ 600.00



Lot #70: H. SCHILE (PUBLISHER), "SMITH RESCUED BY POCHANTAS"

Lithograph on paper with hand-coloring, laid down on cardboard, 17 x 23 1/2 in. (image, sight).

Estimate: \$ 300.00 - \$ 500.00

[To Top](#)



Lots 71 - 80



Lot #71: MEMORIAL FOR GEORGE WASHINGTON

Watercolor on paper, laid down on paper, 13 1/8 x 10 1/8 in. (sight), unsigned, inscribed on the pedestal: A la Memoire/de George/Washington/Ne le 11 Fev 1732/Decede 13 Decr/1799.

Estimate: \$ 2000.00 - \$ 3000.00



Lot #71A: GEORGE WASHINGTON COMMEMORATIVE PRINT ON LINEN

Print in colors on linen, 23 1/2 x 17 in. (sight). Washington is holding a letter stating: "Victory is ours/ Paul Jones." (On Sept., 23, 1779, the Bon Homme Richard defeated the British ship Serapis in the North Sea.) Note: another example of this piece (dated circa 1830) was featured in The Magazine Antiques, July 1948 and another example was sold by Stair Galleries, April 3, 2004, lot 61.

Estimate: \$ 2000.00 - \$ 4000.00



Lot #72: CHARLESTON SAMPLER

Cross-stitch in colors on linen, 10 3/4 x 10 in.

Estimate: \$ 700.00 - \$ 900.00



Lot #73: AMERICAN NEEDLEWORK SAMPLER AND ANOTHER SAMPLER

The first by "Mary Williams, July the 10 1767," with birds, dogs & alphabet, the other "Montgomery Marcia," with alphabet & numbers. Framed: 11 1/2 x 9 in. & 8 1/4 x 9 1/4 in.

Estimate: \$ 250.00 - \$ 350.00



Lot #74: FEDERAL STAINED PINE LONG CASE CLOCK WITH ENGLISH MOVEMENT

The movement signed Matthews, Penrith, with day-of-the-month crescent & breakarch scene of lovers, the swan's neck hood with rosettes above trunk doors & block base; 7 ft. 6 1/2 in. tall.

Estimate: \$ 1000.00 - \$ 1500.00



Lot #74A: LATE FEDERAL MAPLE TWO-PART CORNER CABINET

Enclosed by a twelve-pane glazed door opening to a painted interior, above a pair of doors with brass drop handle; 7 ft. 1 1/2 in. x 45 in. x 23 1/4 in.

Estimate: \$ 1500.00 - \$ 2500.00



Lot #75: MASSACHUSETTS CHIPPENDALE MAHOGANY TEA TABLE

The angular serpentine top on column & vase stem & tripod cabriole legs ending in claw & ball feet. 30 1/2 x 34 x 33 1/2 in.

Estimate: \$ 2000.00 - \$ 4000.00



Lot #76: NEW ENGLAND CHIPPENDALE MAPLE SLANT-FRONT DESK

The three-tier stepped interior with drawers & pigeon holes above four molded drawers, on ogee bracket feet; 42 x 36 x 17 1/4 in.

Estimate: \$ 1000.00 - \$ 1500.00



Lot #77: AMERICAN CHERRY SIDE CHAIR

The serpentine rail above pierced baluster splat & the drop-in rush seat on block legs joined by box stretchers; 38 3/8 in. tall.

Estimate: \$ 400.00 - \$ 600.00



Lot #78: FEDERAL INLAID MAHOGANY BOW-FRONTED CHEST-OF-DRAWERS

The top with fruitwood edge, above four cockbeaded drawers with fruitwood stringing on slightly splayed bracket feet; 33 3/4 x 42 x 22 in.

Estimate: \$ 2000.00 - \$ 3000.00



Lot #79: FEDERAL MAHOGANY SHELF CLOCK

By Charles Stratton, Holden, Mass.

Estimate: \$ 800.00 - \$ 1200.00



Lot #80: FEDERAL MAHOGANY DRESSING TABLE MIRROR

The swing plate above an arched base containing five drawers, brass acorn finials; 25 x 23 x 8 1/4 in.

Estimate: \$ 200.00 - \$ 400.00

[To Top](#)



Lots 81 - 90



Lot #81: FEDERAL CARVED GILTWOOD OVERMANTLE MIRROR

The three-part plate with leaf carved half round pilasters & cornice & acorn applied outset corners; 29 in. x 5 ft. 10 1/4 in. x 4 3/4 in.

Estimate: \$ 700.00 - \$ 900.00



Lot #82: SIMON WILLARD MAHOGANY AND PARCEL-GILT BANJO CLOCK

The 7 7/8 in. painted tin face in drum case above flared eglomise panel with gilt pendant oak leaves & acorns, the eglomise pendulum door inscribed, S. Willard's Patent, 35 in. long.

Estimate: \$ 1000.00 - \$ 1500.00



Lot #83: FEDERAL INLAID AND CARVED MAHOGANY DRESSING TABLE MIRROR

23 1/2 x 25 3/4 x 7 1/4 in.

Estimate: \$ 150.00 - \$ 250.00



Lot #84: PAIR OF FEDERAL BRASS DOUBLE LEMON DROP ANDIRONS

With swelling hexagonal stems & tiered finials; 24 1/2 in. tall.

Estimate: \$ 800.00 - \$ 1200.00



Lot #85: FOUR FIRE TOOLS

With silvered rods.

Estimate: \$ 500.00 - \$ 700.00



Lot #86: FEDERAL WIREMESH SCREEN

The serpentine fronted screen with brass finials; width of screen: 34 1/2 in., 13 1/2 in. deep.

Estimate: \$ 500.00 - \$ 700.00



Lot #86A: FEDERAL STEEPLETOP BRASS ANDIRONS

19 5/8 in. tall.

Estimate: \$ 700.00 - \$ 900.00



Lot #87: PAIR OF FEDERAL-STYLE ANDIRONS
With tiered double urn finials.

Estimate: \$ 150.00 - \$ 250.00



**Lot #88: FEDERAL MAHOGANY TRIPOD
CANDLESTAND**

The top on swelling stem & tripod on notched snake feet;
27 3/4 x 18 in.

Estimate: \$ 200.00 - \$ 300.00

**Lot #88A: LATE FEDERAL CHERRY TWO-PART
CORNER CABINET**

Enclosed by a twelve-pane glazed door with brass swivel



latch & opening to a painted interior, above a pair of doors with single wood pull; 7 ft. 2 1/2 x 44 x 23 1/2 in.

Estimate: \$ 1500.00 - \$ 2500.00



**Lot #89: FEDERAL MAHOGANY TRIPOD
CANDLESTAND**

The rectangular top on column stem & snake feet; 27 1/4 x 17 3/4 x 17 in.

Estimate: \$ 300.00 - \$ 500.00



**Lot #90: FEDERAL INLAID MAHOGANY DEMILUNE
GAMES TABLE**

The cross banded top opening to a baize panel, the frieze with sawtooth lower edge & concave sided diamond medallions, on tapered legs; 30 x 37 1/4 x 17 1/2 in.

Estimate: \$ 800.00 - \$ 1200.00

[To Top](#)



Lots 91 - 100



Lot #91: AMERICAN QUEEN ANNE WALNUT DOUBLE GATE-LEG TABLE

With two rectangular leaves, above scalloped frieze & cabriole legs ending in trifid feet; 26 3/4 x 46 1/2 (leaves raised) x 35 in.

Estimate: \$ 300.00 - \$ 500.00



Lot #92: MASSACHUSETTS FEDERAL INLAID MAHOGANY GAMES TABLE BY ROGERS AND ATWOOD

The shaped hinged top opening to felt surface, the frieze with bird's-eye maple panels, checkered stringing & two oval couch shell medallions, on tapered legs; 29 1/4 x 35 1/2 x 17 1/4 in. Note: Rogers & Atwood label on the underside; see "The Work of Many Hands: Card Tables in Federal America 1790-1820," Yale University Art Gallery, 1982; example no. 10, pg. 126.

Estimate: \$ 2000.00 - \$ 4000.00



Lot #93: PAIR OF WALNUT LOW BACK WINDSOR ARMCHAIRS, POSSIBLY PENNSYLVANIA

Each horseshoe shaped top rail above twelve spindles, the saddle seat on turned legs joined by an H-stretcher.

Estimate: \$ 600.00 - \$ 800.00



Lot #94: FEDERAL-STYLE STAINED PINE NIGHT STAND

Containing two drawers with brass pulls, tapered legs with button feet; 27 x 18 x 17 1/2 in.

Estimate: \$ 200.00 - \$ 400.00



Lot #95: FEDERAL CARVED GILTWOOD AND PAINTED MIRROR

With bead & ribbon twist border, the crest with eagle above oval centering wheat sheaves; 34 3/4 x 15 3/4 in.

Estimate: \$ 400.00 - \$ 600.00



Lot #96: FEDERAL CHERRY TRIPOD CANDLESTAND

With cockbeaded tilt-top, column stem & snake feet; 27 3/4 x 19 1/4 x 18 3/4 in.

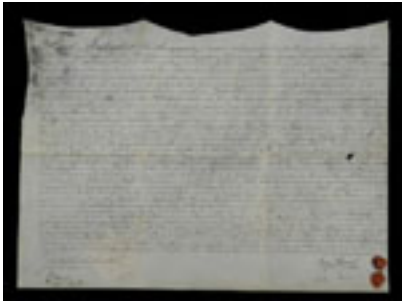
Estimate: \$ 300.00 - \$ 500.00



Lot #97: FEDERAL INLAID MAHOGANY SERPENTINE FRONTED SIDEBOARD

Containing three drawers above four doors & two narrow drawers, 1/4-in. shell inlay & square, tapered legs; 40 1/4 in. x 6 ft. 1/2 in. x 23 1/4 in.; label of Pottier & Stymus, New York.

Estimate: \$ 1000.00 - \$ 1500.00



Lot #98: BENJAMIN RUSH DOCUMENT

Land deed for a parcel "Northside Grey's Alley 20 feet by 50 feet 6 inches," dated August 16, 1783, sold by Benjamin Rush physician & his wife Julia to John Elliott, druggist for "the sum of one hundred & eighty five pounds current money of Pennsylvania... in gold & silver coin..."

Estimate: \$ 75.00 - \$ 125.00



Lot #99: 1795 PHILADELPHIA DECLARATION

To the Commissioners of Bankruptcy informing them that Benjamin Nones has made good on his debts; signed by his creditors. 18 1/8 x 11 1/4 in.

Estimate: \$ 75.00 - \$ 125.00



Lot #100: "HUDSON," AFTER W. G. WALL

Published by H.I. Magarey, NY; aquatint in colors on paper, 14 1/4 x 21 1/2 in. (image, sight). Note: "No. 13 of the Hudson River Port Folio."

Estimate: \$ 2000.00 - \$ 3000.00

[To Top](#)

