

Lots 1 - 10



Lot #1: AMERICAN LATE CLASSICAL MAHOGANY MARBLE-TOP CENTER TABLE, PROBABLY NEW YORK

The polygonal top over conforming ogee-molded frieze above arcaded apron, on scrolled legs centering octagonal plinth with domed finial; 28 1/2 x 33 3/4 x 33 3/4 in.

Estimate: \$ 700.00 - \$ 900.00



Lot #2: AMERICAN LATE CLASSICAL MAHOGANY DESK AND BOOKCASE, PROBABLY NEW YORK

The upper section with molded cornice over plain frieze above pair of glazed cupboard doors with pointed-arched mullions, flanked by pilasters, the lower section fitted with three drawers over fold-out writing surface above frieze drawer over pair of paneled cupboard doors flanked by scrolls, on scrolled feet; 89 1/2 x 44 x 23 1/4 in.

Estimate: \$ 700.00 - \$ 900.00



Lot #3: LOUIS-PHILIPPE MAHOGANY MARBLE-TOP COMMODE

The rectangular top over conforming case fitted with frieze drawer above three long drawers, on bun feet; 36 x 51 x 22 3/4 in.

Estimate: \$ 800.00 - \$ 1200.00



Lot #4: LOUIS-PHILIPPE BRASS AND GILT-BRONZE CATHEDRAL MANTEL CLOCK

The dial with trefoil number panels, set into a lancet arched niche with hexagonal bell tower enclosing a seated female playing the lyre, on stepped base and bracket feet; 27 x 11 x 6 in.

Estimate: \$ 3000.00 - \$ 5000.00



Lot #5: PAIR OF FRENCH GOTHIC REVIVAL PARCEL-GILT AND PATINATED BRONZE STANDS WITH CUT BLUE OVERLAY GLASS SCENT BOTTLES

The stands with pierced decoration of tracery, the bottles cut with diaperwork and lancets; 12 x 3 1/4 x 3 1/4 in.

Estimate: \$ 300.00 - \$ 500.00



Lot #6: TWO PARIS PORCELAIN GILT AND POLYCHROME ENCRIERS

One decorated with gothic tracery on a lavender ground, the other decorated with landscapes. Together with a Paris porcelain teacup and vase in the gothic taste; encrriers 3 x 3 in. to 4 x 6 in.

Estimate: \$ 200.00 - \$ 300.00



Lot #7: AMERICAN GOTHIC REVIVAL ROSEWOOD DRESSING BUREAU, ATTRIBUTED TO MITCHELL AND RAMMELSBERG, CINCINNATI

The rectangular molded top over conforming arcaded frieze above rectangular mirror flanked by oblong compartments with cupboard doors applied with ripple moldings, over ogee-molded glove boxes centering marble top above two long drawers flanked on either side by cupboard door applied with ripple moldings, above shaped apron; 83 1/4 x 48 1/2 x 20 1/2 in. Note: The June 9, 2007 sale at Neal Auction Company in New Orleans included a nearly identical rosewood dressing bureau bearing the label of Mitchell and Rammelsberg. The dressing bureau from the Slonem collection differs from the labeled example only in terms of the cornice.

Estimate: \$ 800.00 - \$ 1200.00



Lot #8: THREE ENGLISH STONEWARE 'APOSTLE' PITCHERS

Each relief-molded with tracery, crockets, pinnacles and figures of apostles in pointed-arch niches. Together with an English stoneware pitcher relief-molded with hunt scene; 9 1/2 to 11 1/2 in.

Estimate: \$ 250.00 - \$ 350.00



Lot #9: PAIR OF GOTHIC REVIVAL DAY'S PATENT GILT-BRASS FACE SCREENS

The one with circular paper label, each cast as a column with two tripartite lancet windows, the cylinder holder with screw-off cap opening to folding fabric fan, on lancet base; 9 1/2 in.

Estimate: \$ 200.00 - \$ 400.00



**Lot #10: WILLIAM IV MAHOGANY PRIE DIEU WITH
GOTHIC-STYLE NEEDLEWORK UPHOLSTERY**

The tall rectangular back above overupholstered trapezoidal seat
over molded seat rails, on turned legs; 44 1/4 x 20 1/2 x 22 1/2 in.
Estimate: \$ 400.00 - \$ 600.00

[Back](#)

[Next](#)

Lots 11 - 20



Lot #11: ENGLISH GOTHIC REVIVAL TRANSFER-PRINTED AND POLYCHROMED IRONSTONE PART TOILET SET

Comprising wash basin, pitcher, brush stand, chamber pot and cover, each piece with decoration of ogee arches, pinnacles, crockets and tracery; basin 5 1/4 in., 15 1/2 in. diam., pitcher 13 1/2 in.
Estimate: \$ 400.00 - \$ 600.00



Lot #12: THREE GOTHIC REVIVAL GILT-METAL AND PATINATED-METAL POCKET WATCH STANDS

Each decorated with pointed arches and tracery, one fitted with later clock. Together with a gilt-metal potpourri and a parcel-gilt and patinated metal stand, each in the gothic taste; pocket watch stands 6 1/2 x 4 in. to 12 1/4 x 5 1/4 in.
Estimate: \$ 300.00 - \$ 500.00



Lot #13: PAIR OF AMERICAN GOTHIC REVIVAL CARVED ROSEWOOD ARMCHAIRS, PROBABLY NEW YORK

Each with pointed-arch crest over carved and pierced tracery above oval upholstered panel flanked by spiral-turned stiles over trapezoidal overupholstered seat centered by padded arms, on spiral-turned legs; 51 1/2 x 26 x 23 in.
Estimate: \$ 2000.00 - \$ 4000.00



Lot #14: PAIR OF FRENCH GOTHIC REVIVAL PATINATED METAL AND CUT GLASS CANDLESTICKS, ON EBONIZED WOOD STANDS

Each lattice-cut stem with prism-hung roll-over leafy collar and urn nozzle, gothic galleried base; 9 1/4 in., 16 1/2 in. overall.
Estimate: \$ 250.00 - \$ 450.00



Lot #15: PAIR OF GOTHIC REVIVAL GILT-METAL WALL MIRRORS

Each with rectangular mirror plate in conforming pierced frame decorated with tracery and cusping; 15 x 9 in.
Estimate: \$ 200.00 - \$ 300.00



Lot #16: GOTHIC REVIVAL CAST-IRON OIL LAMP

The cylindrical glass bowl with nine lancet windows beneath shell-cast top, the stand will roll-over rim, on lancet stem and concave-sided base with four cherub heads; 14 x 7 1/2 in.
Estimate: \$ 150.00 - \$ 250.00



**Lot #17: GOTHIC REVIVAL CARVED AND EBONIZED
OAK MARBLE-TOP CENTER TABLE, AFTER A DESIGN
BY A.W.N. PUGIN**

The later rectangular molded top over conforming paneled apron above tracery-carved supports centering molded stretcher surmounted by truss with carved and pierced tracery; 28 1/2 x 39 1/2 x 21 in.

Estimate: \$ 1500.00 - \$ 2500.00



**Lot #18: CONTINENTAL BISCUIT PORCELAIN TOWER-
FORM VEILLEUSE AND TWO STONEWARE JUGS**

The veilleuse with teapot modeled as a cylindrical cupola over warming stand in the shape of a stone tower with dormered roof, the pear-form jug with four maidens, the pewter-lidded hexagonal jug with figures of knights in niches; 6 to 9 1/2 in.

Estimate: \$ 100.00 - \$ 200.00



**Lot #19: FIVE LOUIS-PHILIPPE GILT-BRONZE AND
PATINATED BRONZE ARTICLES IN THE GOTHIC TASTE**

Including a potpourri, two pastille burners, a lantern and a stand, each with decoration of tracery, pointed arches and crockets; 7 1/4 to 9 in.

Estimate: \$ 1000.00 - \$ 1500.00



**Lot #20: GOTHIC REVIVAL CARVED GILTWOOD
PEDESTAL**

The polygonal top over conforming frieze with tracery above standard decorated with ogee arches and tracery, on plinth base; 38 3/4 x 21 1/2 x 15 1/4 in.

Estimate: \$ 700.00 - \$ 900.00

Lots 21 - 30

Lot #21: PARIS PORCELAIN GILT AND POLCHROME DECORATED PAIR OF TEA CUPS AND SAUCERS AND A PAIR OF SCENT BOTTLES



The cups and saucers decorated with gothic tracery, the scent bottles with vertical panels of floral and geometric decoration. Together with a Meissen porcelain tea cup decorated in the gothic taste; bottles 6 1/2 in., 5 in. diam.

Estimate: \$ 200.00 - \$ 400.00

Lot #22: AMERICAN GOTHIC REVIVAL MAHOGANY FOLD-TOP CARD TABLE, POSSIBLY J. & J.W. MEEKS, NEW YORK



The rectangular top with hinged leaf over cavetto apron above concave-sided standard with ogee arches supported by hexagonal corner columns, above shaped plinth, on hexagonal feet; 29 1/4 x 36 x 18 in. (36 in. open). Note: This card table is similar to a Late Classical mahogany center table bearing the paper label of J. & J.W. Meeks, now in the collections of the New York State Museum. The labeled Meeks table, like the card table, features a standard with concave panels surmounted by arches supported by corner columns (see John L. Scherer, *New York Furniture at the New York State Museum*, 1984, p. 75).

Estimate: \$ 500.00 - \$ 800.00

Lot #23: ELIZABETHAN REVIVAL ROSEWOOD FIRESCREEN



The pierced crest with scrolling leaves over rectangular needlework panel in conforming molded frame flanked by spiral-turned uprights rising from plinth supports, on bun feet; 44 1/4 x 31 1/4 in.

Estimate: \$ 250.00 - \$ 500.00

Lot #24: CONTINENTAL RUBY FLASHED AND CUT GLASS SCENT BOTTLE AND A PARIS PORCELAIN GILT AND POLYCHROME DECORATED SCENT BOTTLE



One bottle in gilt-bronze stand in the gothic taste, the other in patinated bronze stand in the classical taste; 12 1/2 x 14 1/4 in.

Estimate: \$ 300.00 - \$ 500.00

Lot #25: GOTHIC REVIVAL BRASS HOT WATER JUG AND A GOTHIC REVIVAL GILT-METAL STATIONERY HOLDER



The hexagonal jug with two relief panels depicting the Madonna, Child and St. John, spaced by tracery panels, the hinged cover with Venus and Cupid, the three-tier holder decorated with tracery and figures of Venus and Cupid, the base with stag-drawn chariot; 9 x 6 3/4 in. and 11 1/4 x 7 in.

Estimate: \$ 250.00 - \$ 350.00



Lot #26: AMERICAN GOTHIC REVIVAL WALNUT HALL CHAIR

The crocketed ogee-arch crest over pierced tracery back above solid trapezoidal seat, on square tapering legs terminating in spade feet; 55 x 22 x 21 in.

Estimate: \$ 300.00 - \$ 500.00



Lot #27: FIVE FRENCH GOTHIC REVIVAL GILT-BRONZE AND PATINATED BRONZE STANDS WITH CUT GLASS SCENT BOTTLES

Three stands with decoration of tracery, pointed arches and crocketed gables, a pair of stands decorated with vertical bands of dolphins and acanthus leaves rising from bases with tracery; 11 to 13 1/2 in.

Estimate: \$ 1500.00 - \$ 2500.00



Lot #28: GOTHIC REVIVAL GILT-METAL, ROSEWOOD AND SILK CENTERPIECE BASKET

The pleated silk oval bowl suspended from frame applied with two handles, the supports in the form of traseried niches with figures; 7 1/4 x 14 in.

Estimate: \$ 700.00 - \$ 900.00



Lot #29: PAIR OF ROYAL WORCESTER GILT PORCELAIN POTPOURRIS IN THE GOTHIC TASTE

Each with domed pierced cover decorated with tracery. Together with a Meissen porcelain tea cup and saucer, a porcelain tower-form flower holder, a stoneware 'Apostle' bowl and a French blue transfer-printed pottery plate; 3 1/4 x 6 in. diam.

Estimate: \$ 150.00 - \$ 200.00



Lot #30: ENGLISH GOTHIC-STYLE CARVED OAK PANELED CHEST

The rectangular paneled hinged lid over tracery and linenfold panels, on stile feet; 25 1/4 x 53 x 20 3/4 in.

Estimate: \$ 400.00 - \$ 800.00

Lots 31 - 40



Lot #31: AMERICAN GOTHIC REVIVAL MAHOGANY MARBLE-TOP DRESSING BUREAU, PROBABLY PHILADELPHIA

The oval mirror centered by oblong compartments with paneled cupboard doors decorated with tracery over one long and two short drawers above rectangular top over conforming case fitted with a frieze drawer above three graduated long drawer flanked by octagonal columns surmounted by boxes with pin cushions; 82 1/4 x 48 x 23 in.

Estimate: \$ 1000.00 - \$ 2000.00



Lot #32: SEVEN ASSORTED BLOWN GLASS, MOLD-BLOWN GLASS AND PRESSED GLASS ARTICLES IN THE GOTHIC TASTE

Including an enameled cobalt glass trumpet-form vase, a gilt clear glass scent bottle, a mold-blown glass tower-form decanter, a gilt blue opaline glass vase, a pressed glass celery vase, a pressed glass trumpet-form vase and a small satin glass pitcher; 5 1/2 to 13 3/4 in.

Estimate: \$ 100.00 - \$ 200.00



Lot #33: TWO FRENCH GOTHIC REVIVAL SCENT BOTTLE STANDS WITH LATER GLASS INSERTS

One patinated bronze, the other gilt bronze, each with pierced decoration of tracery and crocketed gables. Together with a stoneware hexagonal vase and a gilt and enameled metal stand, each in the gothic taste; 4 1/2 to 8 in.

Estimate: \$ 400.00 - \$ 600.00



Lot #34: PAIR OF AMERICAN GOTHIC REVIVAL GILT-BRASS, MARBLE AND CUT GLASS 'BIGELOW CHAPEL' SINGLE-LIGHT GIRANDOLES, W.S. SHAW, BOSTON

Each with candle socket surmounting stem rising from chapel-form standard; 13 1/2 x 6 3/4 x 3 3/4 in.

Estimate: \$ 150.00 - \$ 250.00



Lot #35: AMERICAN GOTHIC REVIVAL CARVED WALNUT SLIPPER CHAIR

The crocketed ogee-arch crest over carved and pierced back flanked by spiral-turned stiles above trapezoidal overupholstered seat, on spiral-turned legs; 43 x 19 x 18 1/2 in.

Estimate: \$ 150.00 - \$ 250.00



Lot #36: CHARLES X OAK MARBLE-TOP COMMODE IN THE GOTHIC TASTE

The rectangular top over conforming case fitted with ogee-molded frieze drawer above fall-front panel with carved and applied tracery, enclosing three drawers, on plinth base; 40 3/4 x 45 3/4 x 23 1/4 in.
Estimate: \$ 1500.00 - \$ 3000.00



Lot #37: GOTHIC REVIVAL CAST-IRON PIANO STOOL

The octagonal seat rotating over conforming standard rising from tripod base decorated with pierced diaperwork of quatrefoils centering shells; 19 x 13 1/2 x 13 1/2 in.
Estimate: \$ 200.00 - \$ 400.00



Lot #38: AMERICAN ELIZABETHAN REVIVAL CARVED WALNUT SLIPPER CHAIR AND A LOUIS XVI REVIVAL GILT-INCISED AND EBONIZED SLIPPER CHAIR

The walnut chair with arched, pierced tracery-carved crest over spool-turned stiles centering a pierced splat flanked by ball-turned slats above overupholstered seat, on spool-turned legs; the ebonized chair with padded crest flanked by column-form stiles above overupholstered seat over reeded front rail, on round tapering legs surmounted by blocks. Together with a Neo-Grec gilt-incised and ebonized low chair; slipper chairs 28 3/4 x 22 in. and 39 1/2 x 16 in.
Estimate: \$ 600.00 - \$ 1000.00



Lot #39: FIVE FRENCH GOTHIC REVIVAL GILT-BRONZE AND PATINATED BRONZE STANDS WITH COBALT GLASS AND AMETHYST GLASS SCENT BOTTLES

The pierced stands with decoration of pointed arches and tracery; 9 1/2 x 3 in. to 13 x 3 1/2 in.
Estimate: \$ 1800.00 - \$ 2200.00



Lot #40: PAIR OF GOTHIC REVIVAL GILT-METAL SEVEN-LIGHT WALL SCONCES

Each with foliate cast back, pierced tracery projecting arm and tiered candle branches; 12 1/4 x 19 1/2 x 20 1/4 in.
Estimate: \$ 1000.00 - \$ 2000.00

Lots 41 - 50



Lot #41: GOTHIC REVIVAL CARVED OAK LIBRARY ARMCHAIR, ATTRIBUTED TO THE TOBEY FURNITURE COMPANY, CHICAGO

The deep-buttoned rectangular back with leaf-carved frame above upholstered seat with cushion flanked by padded arms over tracery-carved panels, the paneled arm supports rising from leaf-carved feet. Together with a footstool; 34 1/2 x 26 x 31 in.
Estimate: \$ 700.00 - \$ 900.00



Lot #42: GOTHIC-STYLE RED PAINTED AND GILT GONDOLA-FORM ARMCHAIR

The prow-like crest with lion finial, the hull-like seat resting on splayed legs; 67 x 24 1/2 x 36 in.
Estimate: \$ 1000.00 - \$ 2000.00



Lot #43: FOUR FRENCH GOTHIC REVIVAL GILT-BRONZE AND PATINATED BRONZE STANDS WITH CUT GLASS SCENT BOTTLES

The stands with pierced decoration of pointed arches and tracery; 12 1/4 to 14 in.
Estimate: \$ 1800.00 - \$ 2200.00



Lot #44: FOUR LOUIS-PHILIPPE GILT-BRONZE AND PATINATED BRONZE ARTICLES IN THE GOTHIC TASTE

Including an encier with domed cover, a candle screen, a stand and a dressing mirror, each decorated with tracery, pointed arches and crocketed gables; dressing mirror; 14 x 4 3/4 in.
Estimate: \$ 800.00 - \$ 1200.00



Lot #45: PAIR OF FRENCH GOTHIC REVIVAL GILT-METAL CANDLESTICKS

Each with hexagonal baluster standard with arcaded canopy, rising from pedestal decorated with figures in niches flanked by colonettes, resting on griffin feet; 25 1/2 x 8 in.
Estimate: \$ 500.00 - \$ 800.00



Lot #46: AMERICAN ELIZABETHAN REVIVAL ROSEWOOD STOOL

The square needlework-upholstered seat over pierced strapwork apron, on pierced strapwork supports applied with bosses; 16 1/4 x 20 1/2 x 20 1/2 in.
Estimate: \$ 100.00 - \$ 200.00



Lot #47: AMERICAN GOTHIC REVIVAL CARVED OAK ARMCHAIR AND A GOTHIC REVIVAL CARVED ROSEWOOD ARMCHAIR

Each with crocketed ogee-arch crest above carved and pierced tracery over upholstered pointed-arch panel above trapezoidal overupholstered seat, one on turned legs, the other on square tapering legs; 60 x 25 in. and 64 x 25 1/4 in.
Estimate: \$ 400.00 - \$ 800.00



Lot #48: PAIR OF FRENCH GOTHIC REVIVAL PARCEL-GILT AND PATINATED BRONZE STANDS WITH CUT GLASS SCENT BOTTLES

The stands with pierced decoration of tracery, pinnacles and crocketed gables, on marble plinths. Together with another Gothic Revival pierced stand with scent bottle; 12 1/2 to 13 in.
Estimate: \$ 700.00 - \$ 1000.00



Lot #49: FRENCH GOTHIC REVIVAL PATINATED BRONZE AND MARBLE COFFRET

The box and cover decorated with tracery; 7 1/4 x 6 3/4 x 5 in.
Estimate: \$ 250.00 - \$ 450.00



Lot #50: FRENCH GOTHIC REVIVAL PARCEL-GILT AND PATINATED BRONZE DESK CALENDAR WITH THERMOMETER

The case in the form of a gothic portal, mounted on marble plinth. Together with a Gothic Revival cast-metal covered box decorated with tracery and a cast-iron hexagonal string holder with pierced tracery decoration; 8 1/8 x 5 in.
Estimate: \$ 250.00 - \$ 350.00

Lots 51 - 60



Lot #51: GOTHIC REVIVAL PAINTED CAST-IRON STOOL

The hexagonal seat over conforming base cast with roundels and tracery; 15 x 16 1/2 x 14 1/2 in.

Estimate: \$ 400.00 - \$ 800.00



Lot #52: AMERICAN GOTHIC REVIVAL PATENTED SILVERPLATE TABLE CASTER, R. GLEASON & SONS, DORCHESTER, MASSACHUSETTS

The domed hexagonal body with six revolving pointed-arch panels opening to reveal compartments for bottles, the pierced base with shell feet. Together with a silverplate cruet frame fitted with five cut ruby glass bottles, a silverplate two-part salt, three silverplate coasters, a silverplate candlestick and a silverplate hexagonal trumpet-form vase; 16 3/4 in. and 11 in.

Estimate: \$ 800.00 - \$ 1200.00



Lot #53: AMERICAN GOTHIC REVIVAL CARVED ROSEWOOD SLIPPER CHAIR, PROBABLY NEW YORK

The ogee-arch crest with crocket finial over carved and pierced leaves above upholstered panel over horseshoe-shaped overupholstered seat, on turned legs; 45 x 18 1/2 x 17 1/2 in.

Estimate: \$ 100.00 - \$ 200.00



Lot #54: CHARLES X GILT-BRONZE ENCRIER IN THE GOTHIC TASTE

The rectangular stand decorated with pierced tracery, fitted with urn-form inkwells; 8 1/4 x 12 x 6 1/2 in.

Estimate: \$ 600.00 - \$ 800.00



Lot #55: LOUIS-PHILIPPE GILT-BRONZE CATHEDRAL MANTEL CLOCK

The later dial in architectural case surmounted by crocketed gable flanked by colonettes terminating in tabernacles with figures, the plinth base decorated with tracery; 13 3/4 x 7 1/2 x 4 1/4 in.

Estimate: \$ 500.00 - \$ 700.00



Lot #56: AMERICAN GOTHIC REVIVAL MAHOGANY BOOKCASE

The rectangular molded top over conforming case fitted with pair of glazed cupboard doors with pointed-arched mullions, on plinth base; 100 3/4 x 58 x 14 1/2 in.

Estimate: \$ 800.00 - \$ 1200.00



Lot #57: AMERICAN ELIZABETHAN REVIVAL WALNUT SLIPPER CHAIR

The arched crest over turned spindles centered by baluster-turned stiles above needlework-upholstered seat, on baluster-turned legs; 40 1/4 x 18 x 17 1/2 in.

Estimate: \$ 50.00 - \$ 75.00



Lot #58: GERMAN GOTHIC REVIVAL POLYCHROMED HALL BENCH

The back comprised of large center panel flanked by two smaller panels, each painted with banners bearing inscriptions, the rectangular plank seat centered by paneled arms, on shaped supports with trefoils and lobed arches; 44 x 78 1/4 x 21 1/2 in.

Estimate: \$ 750.00 - \$ 1000.00



Lot #59: TWO PAIRS OF GOTHIC REVIVAL DAY'S PATENT GILT-BRASS FACE SCREENS

Three with paper labels on underside, each with folding fan-shaped screen fitted in telescopic stand decorated with ogee arches, tracery and crocketed gables; 9 1/2 to 22 1/2 in. x 3 1/4 to 6 1/4 in. diam.

Estimate: \$ 300.00 - \$ 600.00



Lot #60: GOTHIC REVIVAL GILT-BRONZE AND MARBLE SEVEN-LIGHT CANDELABRUM

The baluster-form standard issuing scrolling branches decorated with leaves and flowers, rising from hexagonal base with tracery and stepped buttresses; 21 x 20 3/4 in.

Estimate: \$ 400.00 - \$ 600.00

Lots 61 - 70



Lot #61: GOTHIC REVIVAL CARVED OAK WALL BRACKET

The rectangular top on tripartite c-scroll tracery support; 16 x 20 x 14 1/8 in.

Estimate: \$ 150.00 - \$ 250.00



Lot #62: AMERICAN GOTHIC REVIVAL CARVED ROSEWOOD ARMCHAIR, PROBABLY NEW YORK

The crocketed ogee-arch back with carved and pierced tracery over upholstered panel above trapezoidal overupholstered seat flanked by padded arms, on square tapering legs surmounted by blocks with quatrefoils.

Estimate: \$ 700.00 - \$ 900.00



Lot #63: PAIR OF GOTHIC REVIVAL PAINTED CAST-IRON ANDIRONS AND A ROCOCO REVIVAL PAINTED CAST-IRON FIRE FENDER

The andirons decorated with pinnacles, crockets and tracery, the fender decorated with scrolls, rocaille, swirling leaves and flowers; andirons 14 1/2 x 7 x 14 in., fender 12 1/4 x 44 1/2 x 12 in.

Estimate: \$ 300.00 - \$ 600.00



Lot #64: GOTHIC REVIVAL WALL MIRROR

The rectangular mirror plate in conforming frame applied with pinnacles, gables and galleries with tracery; 43 x 24 in.

Estimate: \$ 400.00 - \$ 800.00



Lot #65: TWO AMERICAN ELIZABETHAN REVIVAL CARVED ROSEWOOD SLIPPER CHAIRS

Each back with arched crest over carved and pierced tracery or scrolls flanked by spiral-turned stiles above trapezoidal overupholstered seat, on spiral-turned legs; 43 1/2 x 18 x 18 1/4 in. and 44 1/2 x 19 x 18 1/4 in.

Estimate: \$ 250.00 - \$ 500.00



Lot #66: GOTHIC REVIVAL PAINTED CAST-IRON FIRE FENDER

With pierced decoration of oak leaves and acorns surmounted by triangular crest with crockets; 8 x 34 x 12 in.

Estimate: \$ 150.00 - \$ 250.00



Lot #67: GOTHIC REVIVAL SILVERPLATE SANCTUARY LAMP

The octagonal font surmounted by traceried canopy with pinnacles; 57 x 13 1/2 in.

Estimate: \$ 1000.00 - \$ 1500.00



Lot #68: AMERICAN GOTHIC REVIVAL CARVED ROSEWOOD DOUBLE CHAIR-BACK SETTEE

Each arched padded back surmounted by gabled crest, above trapezoidal upholstered seat flanked by shaped arms, on square chamfered legs; 50 1/4 x 58 1/2 x 22 1/2 in.

Estimate: \$ 600.00 - \$ 800.00



Lot #69: GOTHIC REVIVAL CARVED AND EBONIZED PEDESTAL

The octagonal molded top over four chevron-and-leaf carved columns rising from octagonal plinth; 33 x 17 x 17 in.

Estimate: \$ 200.00 - \$ 300.00



Lot #70: AMERICAN GOTHIC REVIVAL CARVED WALNUT SLIPPER CHAIR

The back with arched crest over carved and pierced tracery flanked by spiral-turned stiles above trapezoidal upholstered seat, on spiral-turned legs; 44 x 19 x 17 1/2 in.

Estimate: \$ 100.00 - \$ 200.00

Lots 71 - 80



Lot #71: GOTHIC REVIVAL CARVED HARDWOOD TABLE DISPLAY CABINET

The glazed cupboard door with gable flanked by pinnacles over lobed pointed arch, the glazed sides with tracery, on polygonal plinth base raised on porcelain bun feet; 30 x 14 1/2 x 8 1/2 in.
Estimate: \$ 200.00 - \$ 400.00



Lot #72: AMERICAN GOTHIC REVIVAL WALNUT CHURCH PEW

The rectangular back with three upholstered panels with chamfered edges above upholstered seat flanked by arms over pierced quatrefoils, on square chamfered legs with brackets; 43 1/4 x 72 x 24 1/4 in.
Estimate: \$ 400.00 - \$ 600.00



Lot #73: AMERICAN GOTHIC REVIVAL CARVED ROSEWOOD ARMCHAIR, PROBABLY NEW YORK

The crocketed pointed-arch crest over pierced tracery flanked by spool-turned stiles above overupholstered seat centered by spool-turned arms, the front seat rail over cusped apron, on spool-turned legs; 48 1/2 x 22 1/4 x 21 in.
Estimate: \$ 300.00 - \$ 500.00



Lot #74: TWO ENGLISH PEWTER-MOUNTED STONWARE JUGS IN THE GOTHIC TASTE

One jug relief-molded with apostles, the other relief-molded with medieval scene of jousting knights. Together with two English glazed stoneware cream pitchers with gothic-style decoration; 5 3/4 to 9 1/2 in.
Estimate: \$ 200.00 - \$ 400.00



Lot #75: AMERICAN ROCOCO REVIVAL ROSEWOOD MARBLE-TOP SOFA TABLE, POSSIBLY J. & J.W. MEEKS OR ALEXANDER ROUX, NEW YORK

The rectangular molded top over shaped apron with pendants above shaped supports joined by scrolled stretchers centering an urn finial; 30 x 25 1/2 x 16 1/2 in.
Estimate: \$ 600.00 - \$ 800.00



Lot #76: ROCOCO REVIVAL PART-EBONIZED AND CARVED WALNUT SOFA

The three oval backs with deep-buttoned upholstery enclosed by carved and pierced scrolling leaves and flowers above overupholstered seat centered by padded arms, on cabriole legs; 40 x 63 1/2 x 24 1/2 in.
Estimate: \$ 1000.00 - \$ 2000.00



Lot #77: ASSEMBLED VICTORIAN GILT-METAL, MARBLE AND CUT GLASS THREE-PIECE GIRANDOLE SET

Comprising a pair of two-light candelabra, each cast with recumbent stag against tiered tree, and a single three-light candelabrum with knopped stem; 15 1/2 x 14 in. and 18 1/4 x 16 in.

Estimate: \$ 300.00 - \$ 500.00



Lot #78: AMERICAN ROCOCO REVIVAL ROSEWOOD CABINET, POSSIBLY MITCHELL AND RAMMELSBURG, CINCINNATI

The pierced arched crest with scrolling leaves over serpentine cornice above conforming frieze over pair of cupboard doors inset with mirror glass framed by ripple moldings, the lower section with pair of paneled cupboard doors, on plinth base with block feet; 84 1/2 x 42 x 20 in.

Estimate: \$ 800.00 - \$ 1200.00



Lot #79: ANGLO-INDIAN ROCOCO-STYLE CARVED HARDWOOD HALL MIRROR AND MARBLE-TOP CONSOLE

The serpentine crest carved with scrolls, flowers and leaves, over three arched mirror plates flanked by columns above console with serpentine top over three carved panels flanked by console brackets; 9 ft. 8 1/4 in. x 5 ft. 9 1/2 in. x 20 in.

Estimate: \$ 1000.00 - \$ 2000.00



Lot #80: PARIANWARE FIGURE OF SANTA FILOMENA

Wearing a wreath and classical robe with anthemion hem, holding aloft an oil lamp, and a spear in other arm; 24 1/2 x 8 1/2 in.

Estimate: \$ 400.00 - \$ 600.00

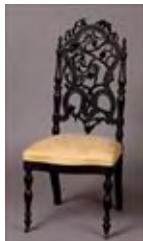
Lots 81 - 90



Lot #81: ENGLISH ROCOCO REVIVAL CARVED WALNUT CHAISE LOUNGE

The shaped asymmetrical back with paneled and cartouche-carved crest rail above overupholstered seat with rounded end, on tapered octagonal legs; 38 3/4 x 62 x 30 in.

Estimate: \$ 200.00 - \$ 400.00



Lot #82: AMERICAN ROCOCO REVIVAL CARVED WALNUT SLIPPER CHAIR

The shaped back carved and pierced with grape clusters and grape leaves, centered by turned stiles, above overupholstered seat, on baluster-turned legs; 39 x 18 x 18 1/4 in.

Estimate: \$ 50.00 - \$ 75.00



Lot #83: PAIR OF VICTORIAN GILT AND ENAMELED CASED GLASS MANTEL LUSTERS

Each with bowl decorated with flower-filled urns, over baluster-form standard, hung with cut glass prisms; 14 in., 7 1/4 in. diam.

Estimate: \$ 150.00 - \$ 250.00



Lot #84: ROCOCO REVIVAL GILTWOOD OVERMANTEL MIRROR

The arched mirror plate in conforming molded frame surmounted by crest of grape clusters and grape leaves, re-gilded; 87 x 48 in.

Estimate: \$ 700.00 - \$ 900.00



Lot #85: ROCOCO REVIVAL PARCEL-GILT, PAINTED AND CARVED THREE-PIECE PARLOR SUITE

Comprising a settee and two side chairs, each with cartouche-shaped back above overupholstered seat, on cabriole legs terminating in scroll feet; settee 45 3/4 x 62 in., side chairs 39 1/2 x 19 1/2 in.

Estimate: \$ 700.00 - \$ 900.00



Lot #86: ROCOCO REVIVAL GILT GESSO WALL MIRROR

The oval mirror plate in conforming molded frame with border of swirling leaves, flowers and scrolls; 27 x 20 in.

Estimate: \$ 100.00 - \$ 200.00



**Lot #87: ANGLO-INDIAN ROCOCO-STYLE CARVED
HARDWOOD HALL MIRROR AND MARBLE-TOP
CONSOLE**

The serpentine crest carved with scrolls, flowers and leaves, over three arched mirror plates flanked by columns above console with serpentine top over three carved panels flanked by console brackets; 116 1/4 x 69 1/2 x 20 in.

Estimate: \$ 1000.00 - \$ 2000.00



**Lot #88: AMERICAN RENAISSANCE REVIVAL CARVED
ROSEWOOD MARBLE-TOP CENTER TABLE,
PROBABLY NEW YORK**

The oval top above conforming frieze with panels centering applied bosses over octagonal standard centered by four shaped supports rising from shaped plinth, on molded feet; 29 1/4 x 38 1/2 x 26 in.

Estimate: \$ 800.00 - \$ 1200.00



**Lot #89: PAIR OF MID-VICTORIAN WALNUT
ARMCHAIRS WITH DEEP-BUTTONED AND PLEATED
VELVET UPHOLSTERY**

Each with shaped padded back flanked by outcurved arms centering overupholstered seat, on turned legs; 40 x 36 in.

Estimate: \$ 400.00 - \$ 800.00



Lot #90: VICTORIAN CARVED ALABASTER PEDESTAL

The round top over leaf-carved baluster-form standard rising from domed base; 30 1/2 x 14 in. diam.

Estimate: \$ 300.00 - \$ 600.00

Lots 91 - 100



Lot #91: AMERICAN NEO-GREC PART-EBONIZED AND GILT-INCISED WALNUT PEDESTAL

The square molded top over conforming frieze above shaped apron over columnar standard rising from molded base; 38 1/2 x 14 1/4 x 14 1/4 in.

Estimate: \$ 400.00 - \$ 600.00

Lot #92: AMERICAN RENAISSANCE REVIVAL CARVED WALNUT AND TULIPWOOD FOUR-PIECE PARLOR SUITE, POSSIBLY THOMAS H. GODEY, BALTIMORE

Comprising a sofa, an armchair and two side chairs, each with arched crest rail centering cartouche over padded back above overupholstered seat, on turned trumpet-form legs, the frame applied with pierced panels; sofa 44 1/4 x 68 x 24 in., side chairs 38 3/4 x 22 x 19 in. Note: Included in the furniture collections of the Maryland Historical Society is a Renaissance Revival walnut armchair applied with pierced tulipwood panels, bearing the mark of Baltimore cabinetmaker Thomas Godey. The pieces in the parlor suite are similar to the Godey armchair not only in the use of pierced tulipwood panels, but also in terms of the shape of the crest rail and cartouche and the form of the arm supports on the sofa and armchair (see Romaine S. Somerville, "Furniture at the Maryland Historical Society," *The Magazine Antiques*, May 1976, p. 989).

Estimate: \$ 1000.00 - \$ 1500.00



Lot #93: ASSEMBLED STAFFORDSHIRE PINK LUSTERWARE PART TEA SERVICE

Comprising eleven cups and saucers, teapot, sugar bowl and cover, two jugs, two sauceboats, two bowls and four plates.

Estimate: \$ 150.00 - \$ 300.00



Lot #94: RENAISSANCE-STYLE MAJOLICA PEDESTAL

The square molded top over concave frieze decorated with volutes and scrolling leaves above square, tapering paneled standard with grotesque ornament, on molded base; 42 1/2 x 11 3/4 x 11 3/4 in.

Estimate: \$ 600.00 - \$ 900.00



Lot #95: SOHMER & CO. GRAND PIANO

With ebonized and parcel-gilt case, standing on round tapering legs surmounted by rosette-carved blocks centered by leaf-carved brackets; 39 1/2 x 58 1/2 in.

Estimate: \$ 700.00 - \$ 900.00





Lot #96: AMERICAN RENAISSANCE REVIVAL CARVED GILTWOOD PIER MIRROR AND MARBLE-TOP CONSOLE

The crest with cartouche flanked by palmette finials over frieze with cabachons above arched mirror plate flanked by pilasteres over console with shaped top above serpentine frieze, on baluster-shaped legs; 8 ft. 10 1/2 in. x 35 1/2 x 12 1/2 in.

Estimate: \$ 300.00 - \$ 400.00



Lot #97: AMERICAN RENAISSANCE REVIVAL PART-EBONIZED AND GILT-INCISED WALNUT STAND

The square onyx-inset top over arched apron above shaped supports over flared legs centering an urn-shaped finial; 32 1/2 x 18 1/2 x 18 1/2 in.

Estimate: \$ 300.00 - \$ 600.00



Lot #98: PAIR OF STAFFORDSHIRE POTTERY SPILL VASES WITH LAMB FIGURES

Together with two pairs of Staffordshire pottery spaniel figures; spill vases 7 1/4 x 6 in.

Estimate: \$ 200.00 - \$ 400.00



Lot #99: PARIANWARE BUST OF GEORGE WASHINGTON, AFTER HOUDON

Modeled with ribbon-tied hair and cloak over shoulders, inscribed twice in pencil Christmas 1863, on ebonized wood stand; 11 x 8 1/4 in., overall 15 1/4 in.

Estimate: \$ 200.00 - \$ 300.00



Lot #100: ENGLISH VICTORIAN MAHOGANY EXTENSION DINING TABLE

The rectangular molded top with rounded corners over conforming apron, on tapered columnar legs joined by shaped stretchers; 31 3/4 x 50 x 46 3/4 in.

Estimate: \$ 500.00 - \$ 800.00