

Lots 101 - 110



Lot #101: TWO VICTORIAN PLUSH-UPHOLSTERED SOFAS

Each with deep-buttoned and pleated back, one sofa on turned walnut legs; 32 x 83 x 30 in. and 36 x 84 x 33 in.

Estimate: \$ 1000.00 - \$ 1500.00



Lot #102: RENAISSANCE REVIVAL CARVED GILTWOOD WINDOW CORNICE

With arched pediment surmounted by palmette flanked by meander and scrolling leaves; 28 x 80 x 10 1/2 in.

Estimate: \$ 300.00 - \$ 500.00



Lot #102A: PAIR OF VICTORIAN-STYLE LIGHT BLUE, DARK BLUE AND SILVER SILK BROCATELLE WINDOW CURTAINS

Each panel approx. 10 ft. 4 in. x 5 ft. 2 in.

Estimate: \$ 200.00 - \$ 400.00



Lot #103: ENGLISH VICTORIAN CARVED OAK LIBRARY TABLE, GILLOWS OF LANCASTER

Bearing remnants of a paper label, the molded rectangular leather-inset top with rounded ends over conforming frieze, on gadrooned turned legs surmounted by console brackets; 30 x 14 ft. 1/2 in. x 60 1/2 in.

Estimate: \$ 1000.00 - \$ 2000.00



Lot #104: PAIR OF SECOND EMPIRE CARVED GILTWOOD SIDE CHAIRS IN THE LOUIS XVI STYLE, CHARLES MUNIER

Each with chapeau-de-gendarme crest rail over lyre-shaped splat flanked by fluted columnar stiles above deep-buttoned upholstered seat, on turned legs joined by stretchers, one chair with stenciled label on underside; 34 1/2 x 16 1/2 x 16 in.

Estimate: \$ 150.00 - \$ 250.00





**Lot #105: PAIR OF ITALIAN CARVED ALABASTER
MANTEL URNS**

Each with bowl centered by Bacchante mask and with s-scroll grapevine handles, lobed roll-over rim, leafy stem and block base; 19 1/8 x 7 in.

Estimate: \$ 200.00 - \$ 300.00



**Lot #106: CONTINENTAL GILT-METAL FIGURE OF A
RECLINING MUSE WITH LYRE, MOUNTED AS A LAMP**

Figure 9 x 13 1/2 in. (24 in. to shade).

Estimate: \$ 150.00 - \$ 250.00



Lot #107: VICTORIAN ROUGE MARBLE PEDESTAL

31 x 12 1/8 x 12 1/8 in.

Estimate: \$ 500.00 - \$ 700.00



**Lot #108: RENAISSANCE REVIVAL CARVED GILTWOOD
MARBLE-TOP CENTER TABLE**

The cartouche-shaped top over conforming frieze with incised decoration of ivy leaves, on round tapering fluted legs joined by shaped stretchers surmounted by urn finial; 32 x 38 x 23 1/2 in.

Estimate: \$ 500.00 - \$ 800.00



**Lot #109: RENAISSANCE REVIVAL GILTWOOD
OVERMANTEL MIRROR**

The arched mirror plate in conforming frame with molded pilasters surmounted by clusters of grapes. Together with a giltwood rectangular wall mirror; 42 1/4 x 28 1/2 in.

Estimate: \$ 100.00 - \$ 200.00



**Lot #110: SIX ENGLISH RENAISSANCE REVIVAL
INCISED WALNUT DINING CHAIRS**

Each with concave back centering splat above overupholstered seat, on turned trumpet-form legs; 35 x 19 1/2 x 20 in.

Estimate: \$ 500.00 - \$ 800.00

Lots 111 - 120



Lot #111: VICTORIAN-STYLE CARVED SLATE-TOP STAND

The round top over male figure with dead game above triangular plinth resting on paw feet; 27 in., 23 in. diam.

Estimate: \$ 150.00 - \$ 250.00



Lot #112: THREE STAFFORDSHIRE POTTERY ARTICLES

Including a figure group of Uncle Tom and Eva, an equestrian figure of a mounted youth and a cottage-form pastille burner; 6 3/4 to 9 1/2 in.

Estimate: \$ 150.00 - \$ 250.00



Lot #113: VICTORIAN GILTWOOD WALL MIRROR

The oval beveled mirror plate in conforming pierced frame decorated with scrolling leaves; 46 1/2 x 24 1/2 in.

Estimate: \$ 50.00 - \$ 75.00



Lot #114: PAIR OF RENAISSANCE REVIVAL BRASS-MOUNTED OPALINE GLASS VASES, MOUNTED AS LAMPS

Each urn-form body applied with scrolled handles with classical masks, the base decorated with scrolls and anthemia; vases 15 1/2 x 9 in. (29 in. overall).

Estimate: \$ 200.00 - \$ 300.00



Lot #115: AMERICAN RENAISSANCE REVIVAL INCISED WALNUT AND FIGURED WALNUT FOUR-PIECE PARLOR SUITE

Comprising a sofa, an armchair and two side chairs, each with arched crest over oval upholstered panel above overupholstered trapezoidal seat, on turned trumpet-form legs. Together with a Renaissance Revival walnut side chair carved with dolphins; sofa 40 1/2 x 68 x 25 in., side chairs 40 1/2 x 20 x 18 1/2 in.

Estimate: \$ 1000.00 - \$ 2000.00



Lot #116: SECOND EMPIRE CARVED GILTWOOD MARBLE-TOP GUÉRIDON IN THE LOUIS XVI STYLE

The round top over conforming frieze above three columnar supports centering fluted, leaf-carved turned standard rising from shaped acanthus-carved legs terminating in scrolls; 28 in., 24 1/2 in. diam.

Estimate: \$ 300.00 - \$ 500.00



Lot #117: VICTORIAN COTTAGE PAINTED BEDSTEAD AND WASHSTAND

The bedstead with headboard surmounted by segmental pediment over pilasters centering panel decorated with clusters of grapes, the washstand with shaped backplash over case fitted with frieze drawer above pair of paneled cupboard doors; 72 x 58 1/2 x 82 1/2 in. Note: This lot does not include the bed coverings, mattress, box spring or bed slats.

Estimate: \$ 600.00 - \$ 800.00



Lot #118: VICTORIAN CAST-IRON COAL SCUTTLE

The hinged cover with cast decoration of shell and scrolling leaves. Together with a cast-iron lyre-form doorstop; 11 x 13 1/2 x 21 in.

Estimate: \$ 150.00 - \$ 300.00



Lot #119: NEOCLASSICAL-STYLE MIXED MARBLE CAMPAGNA-FORM URN ON STAND

The shallow reeded bowl with everted rim and now with single handle, on flared fluted stem, on a block-form pedestal; 17 x 14 in.

Estimate: \$ 300.00 - \$ 500.00



Lot #120: EGYPTIAN REVIVAL PATINATED METAL AND MARBLE TWO-LIGHT CANDELABRUM

The ovoid and spindle standard with Egyptian lion's mask, issuing leafy arms, the black marble base with gilt-incised Egyptian motifs, on papyrus banded feet; 19 1/2 x 8 1/2 in.

Estimate: \$ 75.00 - \$ 125.00

Lots 121 - 130



Lot #121: AMERICAN RENAISSANCE REVIVAL BRASS-MOUNTED, CARVED AND INCISED WALNUT ARMCHAIR, IN THE MANNER OF JOHN JELLIFF

The arched crest rail centering cartouche over padded back above overupholstered seat flanked by arms with arm supports carved with classical figures, on turned trumpet-form legs; 41 x 28 x 28 1/2 in.
Estimate: \$ 300.00 - \$ 800.00



Lot #122: TWO NEOCLASSICAL-STYLE FAUX MARBLE COLUMN-FORM PEDESTALS

Each with fluted shaft rising from molded base; 39 x 16 in. and 51 1/2 x 17 in.
Estimate: \$ 300.00 - \$ 600.00



Lot #123: AMERICAN RENAISSANCE REVIVAL WALNUT LOW TABLE

The oval top over four shaped supports with incised decoration. Together with an upholstered x-frame stool with velvet cover; table 15 3/4 x 30 x 22 in., stool 18 1/2 x 21 1/2 x 18 1/2 in.
Estimate: \$ 100.00 - \$ 200.00



Lot #124: THREE VELVET-COVERED BOXES AND A PICTORIAL BIBLE

The bible "super fine edition" published in 1872 by Nelson & Phillips, New York. Together with a two-drawer box with Egyptian head medallion, a smaller box with applied composition rondel of an Elizabethan lady and another box; 8 to 12 1/4 in.
Estimate: \$ 100.00 - \$ 200.00



Lot #125: NEO-GREC CARVED GILTWOOD WALL MIRROR

The arched mirror plate in conforming frame with petal-tip cavetto molding flanked by engaged columns supporting the anthemion-banded crest centered by mask, with entrelac base and foliate apron; 41 x 44 in.
Estimate: \$ 150.00 - \$ 250.00



Lot #126: TWO SIMILAR RENAISSANCE REVIVAL MARBLE TAZZAS

The one with shallow two-handled bowl on pedestal with oval cameo on rosso-antico ground, the other with bowl with everted rim, on shaped pedestal applied with verde antico fluted pilaster; 8 1/4 x 10 1/4 in. and 9 1/4 x 7 1/2 in.
Estimate: \$ 250.00 - \$ 450.00



Lot #127: NEOCLASSICAL-STYLE GILT-METAL MOUNTED MARBLE PEDESTAL

The square molded top over columnar standard rising from molded base; 41 1/2 x 11 1/4 x 11 1/4 in.
Estimate: \$ 400.00 - \$ 800.00



Lot #128: FOUR ENGLISH PARIANWARE ARTICLES

Including a figure of the Virgin Mary, a hexagonal vase with tracery, a stand in the form of a baptismal font and a lobed covered box decorated with arabesques. Together with a stoneware 'Apostle' teapot and a porcelain miniature font; Virgin Mary figure 12 3/4 x 4 1/2 in. diam.
Estimate: \$ 150.00 - \$ 250.00



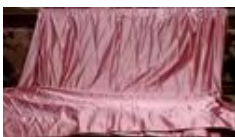
Lot #129: AMERICAN RENAISSANCE REVIVAL GILT-INCISED WALNUT, ROSEWOOD, BURL ASH AND BURR-THUYA BEDSTEAD, PROBABLY NEW YORK

The headboard with scrolled pediment centering cartouche over paneled frieze with tablet above pair of panels flanked by columnar posts with urn finials, the paneled footboard centered by columnar posts with urn finials. Purported to have been made for the Astor family; 89 1/2 x 66 x 86 in. Together with a silk lampas coverlet trimmed with netted tassel fringe. Note: This lot does not include a mattress, box spring or bed slats.
Estimate: \$ 1000.00 - \$ 2000.00



Lot #130: AMERICAN RENAISSANCE REVIVAL PART-EBONIZED AND INCISED WALNUT SLIPPER CHAIR

The shaped crest rail with cartouche over deep-buttoned back above overupholstered seat over serpentine front rail, on turned trumpet-form legs; 38 3/4 x 20 1/2 x 18 1/2 in.
Estimate: \$ 250.00 - \$ 500.00



Lot #130A: PAIR OF PINK SILK SATIN WINDOW CURTAINS

Each panel approx. 7 ft. 8 in. x 9 ft. 2 in.
Estimate: \$ 100.00 - \$ 200.00

Lots 131 - 140



Lot #131: AMERICAN RENAISSANCE REVIVAL GILT-INCISED WALNUT BOOKCASE

The rectangular molded top over conforming frieze with raised panel, above pair of glazed cupboard doors flanked by pilasters with raised panels, over two drawers, on plinth base; 71 1/2 x 47 x 18 1/2 in.

Estimate: \$ 500.00 - \$ 1000.00



Lot #132: NEOCLASSICAL-STYLE BLACK AND ROUGE MARBLE COLUMNAR PEDESTAL

43 1/2 x 16 x 16 in.

Estimate: \$ 400.00 - \$ 800.00



Lot #133: RED JAPANNED PAPIER-MÂCHÉ BOX

The hinged lid with grape cluster panel, above sloping case with overlapping pendants; 3 x 12 in.

Estimate: \$ 200.00 - \$ 300.00



Lot #134: TWO PAIRS OF MID-VICTORIAN PURPLE SILK DAMASK WINDOW CURTAINS

Each panel trimmed with red, green, silver and gold flat braid.

Note: According to the consignor, these window curtains were made in the 1850's for Andalusia, Nicholas Biddle's estate along the Delaware River outside Philadelphia. Each panel approx. 10 ft. 4 in. x 5 ft.

Estimate: \$ 750.00 - \$ 1000.00



Lot #135: AMERICAN LOUIS XVI REVIVAL GILT-INCISED AND EBONIZED PEDESTAL

The square molded top over cavetto-molded frieze above arched apron over fluted columnar supports rising from plinth base; 42 1/4 x 13 1/2 x 13 1/2 in.

Estimate: \$ 200.00 - \$ 400.00



Lot #136: AMERICAN RENAISSANCE REVIVAL INCISED WALNUT AND MARQUETRY SOFA

The rectangular deep-buttoned panel surmounted by crest with cartouche, flanked on either side by padded rail over scrolled support, above overupholstered seat centered by deep-buttoned arms, on turned trumpet-form legs; 43 x 64 x 27 in.

Estimate: \$ 700.00 - \$ 900.00



Lot #136A: VICTORIAN CUT GLASS CENTERPIECE BOWL

The hexagonal paneled bowl with shaped rim, the knopped standard rising from lobed base; 9 x 11 1/4 diam.
Estimate: \$ 200.00 - \$ 300.00



Lot #137: ITALIAN CARVED ALABASTER FOUNTAIN

The hemispherical basin with two mask-carved handles centering carved masks and anthemia, over fluted columnar standard rising from molded base; 36 x 19 in. diam.
Estimate: \$ 300.00 - \$ 500.00



Lot #138: RENAISSANCE-STYLE PATINATED METAL PLAQUE WITH TROPHY OF ARMS

Together with a velvet-covered shield mounted with cast-iron miniature armor and weapons, a patinated metal round plaque with relief of knight mounted on horse, a Renaissance-style cast-metal shield, a patinated metal plaque with portrait bust of a soldier and a patinated sheet-metal plaque with relief of a soldier mounted on a horse; plaque with trophy of arms 18 1/4 x 13 in.
Estimate: \$ 200.00 - \$ 300.00



Lot #139: GRAY AND WHITE MOTTLED MARBLE PEDESTAL

The hexagonal top on reeded shaft and octagonal base; 42 x 14 1/4 in.
Estimate: \$ 400.00 - \$ 600.00



Lot #140: PAIR OF STAFFORDSHIRE POTTERY POODLE FIGURES

Together with an Indian papier-mâché box, a painted octagonal box and a lacquer square box; poodles 6 1/2 x 5 in.
Estimate: \$ 100.00 - \$ 200.00

Lots 141 - 150

Lot #141: PARIS PORCELAIN PART DINNER SERVICE



Each piece with purple border and gilt bands, comprising twelve 9 in. plates, seventeen 8 in. plates, an oval platter, a covered soup tureen, a covered vegetable dish, a fruit bowl, two pairs of stands, a sauceboat with attached stand and two lobed dishes; fruit bowl 5 x 9 in. diam.

Estimate: \$ 400.00 - \$ 600.00

Lot #142: TWO LIMOGES BISCUIT PORCELAIN BUSTS



Each on cobalt blue-glazed socle with gilt bands. Together with a stoneware vase with vine decoration and a Staffordshire pottery figure group; busts 7 x 3 3/4 in.

Estimate: \$ 150.00 - \$ 250.00

Lot #143: PAIR OF FRENCH GILT AND POLYCHROME DECORATED PORCELAIN CANDLESTICKS WITH PERSIAN FIGURES



Each male or female figure in elaborately patterned costume, holding aloft an amphora, on base with Rococo scrollwork; 15 1/2 x 5 x 4 1/2 in.

Estimate: \$ 100.00 - \$ 200.00

Lot #144: NEOCLASSICAL-STYLE MARBLE AND FAUX MARBLE PEDESTAL



The round molded top over conforming shaft, on molded base; 44 1/2 in., 15 in. diam.

Estimate: \$ 500.00 - \$ 800.00

Lot #144A: FOUR AMERICAN RENAISSANCE REVIVAL CARVED WALNUT CHAIRS



Comprising two armchairs and two slipper chairs, each with pedimented back surmounted by cartouche over carved and pierced leaves above upholstered arched panel over trapezoidal overupholstered seat, on turned tapering legs; 54 3/4 x 26 1/2 x 27 1/2 in., slipper chairs 43 1/4 x 19 x 21 1/4 in. Note: This lot is not part of the collection of Hunt Slonem.

Estimate: \$ 500.00 - \$ 800.00

Lot #145: AMERICAN RENAISSANCE REVIVAL INCISED WALNUT MARBLE-TOP LOW TABLE AND A RENAISSANCE REVIVAL WALNUT SIDE TABLE



Each with rectangular top over four shaped legs; 20 x 28 x 19 in.

Estimate: \$ 150.00 - \$ 250.00



Lot #146: SEVEN ASSORTED GLASS TABLE ARTICLES

Including a decanter and stopper with Greek key band, 10 in. pressed cake plate with rope-twist arched handle, a pair of hexagonal 11 in. candlesticks, an etched glass candlestick, a pressed glass sugar bowl and a green and frosted white glass small compote. Estimate: \$ 80.00 - \$ 120.00



Lot #147: FRENCH PÂTE-SUR-PÂTE PORCELAIN VASE

The baluster-form body decorated with flowers and birds in shaped reserves on blue ground, applied with gilt handles. Together with a French transfer-printed and polychromed pottery bowl, a Dutch transfer-printed pottery bowl, a Chinese blue and white porcelain teapot and a polychrome decorated pottery vase with applied insect; 9 1/2 in., 5 in. diam.

Estimate: \$ 100.00 - \$ 150.00



Lot #148: AMERICAN RENAISSANCE REVIVAL WALNUT AND FIGURED WALNUT BEDSTEAD

The headboard and arched footboard decorated with raised panels; 56 1/2 x 69 x 86 1/2 in. Together with a faux mink bed cover. Note: This lot does not include a mattress, box spring or bed slats.

Estimate: \$ 1000.00 - \$ 2000.00



Lot #149: COPELAND PARIANWARE BUST OF A GIRL, AFTER JOHN HANCOCK

Impressed Copeland, John Hancock Sc. and 1865, above a rubbed printed inscription; 11 1/2 x 6 in.

Estimate: \$ 200.00 - \$ 400.00



Lot #150: VICTORIAN PAINTED PEDESTAL

The rectangular top trimmed with bullion fringe, over tapered standard rising from molded base. Together with a voided velvet table cover and a brocaded silk table cover; 36 x 12 1/8 x 11 3/4 in.

Estimate: \$ 200.00 - \$ 400.00

Lots 151 - 160



Lot #151: FRENCH PATINATED AND PARCEL-GILT CAST-METAL FIGURAL GAS LAMP

Labeled by Fourment Houlle & Cie, Val d'osne, modeled as a classical maiden wearing necklace and gown with trefoil florettes, holding aloft an oil lamp fitted with gas burner with etched glass shade, on fluted composition "porphyry" pedestal; figure 5 ft. 6 in., stand 16 in.

Estimate: \$ 800.00 - \$ 1200.00



Lot #152: AMERICAN RENAISSANCE REVIVAL GILT-INCISED AND EBONIZED ARMCHAIR

The rectangular deep-buttoned back above overupholstered seat flanked by shaped arms, on tapered turned legs; 32 1/2 x 26 x 23 1/2 in.

Estimate: \$ 250.00 - \$ 450.00



Lot #153: AMERICAN RENAISSANCE REVIVAL INCISED WALNUT SLIPPER CHAIR

The arched crest with cartouche over padded back above overupholstered seat, on turned trumpet-form legs. Together with a Louis XV-style white painted window bench and a Victorian white painted side table; slipper chair 41 1/2 x 20 in.

Estimate: \$ 100.00 - \$ 200.00



Lot #154: HEISEY PRESSED GLASS PUNCH BOWL AND STAND

The bowl and stand in the Greek Key pattern and with impressed mark, 14 1/2 x 15 in. diam.; together with a pair of espergues with scalloped dish and trumpet-form flower holder, 15 x 13 in. diam.

Estimate: \$ 500.00 - \$ 700.00



Lot #155: VICTORIAN GILTWOOD AND MOLDED GESSO OVAL MIRROR

The frame decorated with cartouche, scrolling leaves, flowers and fruit. Together with two rococo-style carved wall brackets and a Gothic-style carved wall bracket; mirror 18 1/4 x 12 3/4 in.

Estimate: \$ 250.00 - \$ 350.00



Lot #156: FRENCH NEOCLASSICAL-STYLE PATINATED METAL AND MARBLE MANTEL CLOCK, THE DIAL SIGNED LEVROUX VALENCAY

The painted porcelain dial set in architectural niche flanked by column and male figure and surmounted by eagle clutching fragments of a column in his talons; 28 1/2 x 13 3/4 x 8 1/2 in.
Estimate: \$ 500.00 - \$ 800.00



Lot #157: ENGLISH NEO-GREC PART-EBONIZED AND GILT-INCISED FIGURED MAPLE DRAWING ROOM CABINET

The shaped molded top with quarter-circle ends over conforming case fitted with center glazed cupboard door flanked on either side by a rectangular mirror plate fronted by columns supporting projecting canopy, centered by convex glazed cupboard doors, the base with shaped aprons; 42 x 76 1/4 x 25 in.
Estimate: \$ 1500.00 - \$ 3000.00



Lot #158: AMERICAN NEO-GREC GILT-INCISED AND EBONIZED WALL BRACKET AND AN AESTHETIC MOVEMENT GILT-INCISED AND EBONIZED WALL MIRROR

The bracket with shaped back panel issuing semicircular shelf, the mirror with diamond-shaped beveled plate in conforming frame;
wall bracket 32 x 13 1/4 in.
Estimate: \$ 75.00 - \$ 125.00



Lot #159: ENGLISH SILVERPLATE OVAL MEAT DISH DOME

Engraved with two oval cartouches and Greek key band, with beaded handle and gadrooned molding on base; 12 x 20 1/2 in.
Estimate: \$ 150.00 - \$ 250.00



Lot #160: COPELAND PARIANWARE FIGURE, "MENDING THE NET"

Impressed with title, Copeland and, "Art Union of London Copyright Reserved," modeled as a barefoot girl seated on the beach with net over knee; 17 x 17 in.
Estimate: \$ 300.00 - \$ 500.00

Lots 161 - 170



Lot #161: FRENCH REVOLUTION CENTENNIAL CARVED WALNUT CABINET

The upper section with crest of entwined oak branches centering female bust, flanked by finials in the form of busts of laughing and crying children, over paneled cupboard door above two short drawers centering open compartment, flanked by shelves, all resting on leaf-carved console brackets with busts, the lower section fitted with pair of paneled cupboard doors carved with trophies, centered by grapevine-form brackets, over shaped apron, on bracket feet; 95 x 44 1/4 x 21 in.

Estimate: \$ 1500.00 - \$ 3000.00



Lot #162: VICTORIAN-STYLE EBONIZED, FAUX PAINTED AND GILT-INCISED PEDESTAL

The square molded top over tapering standard above molded base; 41 1/2 x 12 x 12 in.

Estimate: \$ 200.00 - \$ 400.00



Lot #162A: SEVEN BOHEMIAN RUBY FLASHED AND AMBER FLASHED GLASS DECANTERS

Each with etched decoration of geometric motifs or flowers, leaves, cartouches and stags; 14 to 16 1/4 in.

Estimate: \$ 300.00 - \$ 600.00



Lot #163: MERCURY GLASS GAZING BALL ON STAND

The patinated composition stand decorated with leaves and egg-and-dart molding, marked Luxwell. Together with two other mercury glass gazing balls.

Estimate: \$ 150.00 - \$ 250.00



Lot #164: VICTORIAN GLASS DOME WITH TWO FAUX OSTRICH EGGS

The dome rising from round, molded giltwood base; dome 28 1/2 in., 14 3/4 in. diam.

Estimate: \$ 100.00 - \$ 200.00



Lot #165: CARVED ALABASTER CANDLESTICK WITH OWL FIGURES, MOUNTED AS A LAMP

20 1/2 in.

Estimate: \$ 125.00 - \$ 175.00



Lot #166: RENAISSANCE REVIVAL CARVED GILTWOOD WINDOW CORNICE

With two arched pediments surmounted by palmettes flanked by scrolling leaves.

Estimate: \$ 400.00 - \$ 600.00



Lot #167: TWO AMERICAN RENAISSANCE REVIVAL CARVED WALNUT ARMCHAIRS

One armchair with arched crest over padded back above upholstered arms terminating in carved classical masks, on turned trumpet-form legs; the other armchair with shaped back over upholstered arms above overupholstered seat, on round tapering legs; 39 1/2 x 28 in. and 41 x 31 in.

Estimate: \$ 500.00 - \$ 800.00



Lot #167A: REED & BARTON SILVERPLATE TEAPOT

The hexagonal body with engraved decoration of pointed arches suspending floral festoons, applied with scrolled handle. Together with silverplate candlestick, toast rack, octagonal bottle coaster and a candle extinguisher; teapot 6 1/2 x 8 1/2 in.

Estimate: \$ 75.00 - \$ 125.00



Lot #168: VICTORIAN MARBLE COLUMNAR PEDESTAL

38 x 14 x 14 in.

Estimate: \$ 300.00 - \$ 600.00



Lot #169: PAIR OF NEOCLASSICAL-STYLE COMPOSITION WALL BRACKETS

Each with relief decoration of feathers. Together with two painted cast-iron tassel-form pendants; brackets 8 x 6 in.

Estimate: \$ 50.00 - \$ 100.00



Lot #170: ROCOCO-STYLE GILTWOOD WALL MIRROR

The rectangular mirror plate in conforming frame decorated with scrolls and rocaille; 31 x 26 1/4 in.

Estimate: \$ 200.00 - \$ 400.00

[Back](#)

[Next](#)

Lots 171 - 180



**Lot #171: COPELAND PARIANWARE FIGURE,
"PENELOPHON THE BEGGAR MAID"**

Impressed Copeland, the barefoot girl covering her breasts with her hands, the circular base with title; 27 in.

Estimate: \$ 300.00 - \$ 500.00



**Lot #172: AMERICAN RENAISSANCE REVIVAL PART-
EBONIZED AND GILT-INCISED WALNUT MARBLE-TOP
CENTER TABLE**

Lateral rail under marble top bears the stenciled label From/C.F. WEBER FURNITURE MANUFACTORY, the shaped top over conforming frieze with raised panels above four shaped supports centering a baluster-turned and octagonal block standard, on downswept legs applied with bosses; 30 x 33 x 23 in.

Estimate: \$ 600.00 - \$ 800.00



**Lot #173: RENAISSANCE REVIVAL GILTWOOD PIER
MIRROR**

The crest with shield-shaped cartouche flanked by palmette finials over frieze with cabachons above rectangular mirror plate in conforming molded frame; 10 ft. 5 in. x 39 1/2 in.

Estimate: \$ 400.00 - \$ 800.00



**Lot #174: FOUR ASSORTED PORCELAIN AND POTTERY
ARTICLES**

Including two small pottery pitchers, a Chinese celadon-glazed figure group and a biscuit porcelain stand in the form of a hand holding a scallop shell; 4 1/2 to 6 in.

Estimate: \$ 75.00 - \$ 125.00



**Lot #175: RENAISSANCE REVIVAL INCISED AND
EBONIZED BEDSTEAD**

The headboard with arched crest centering cartouche over turned spindles flanked by baluster-turned and block posts surmounted by turned finials, the similar footboard with turned spindles over incised rail centering rosette; 58 x 57 x 80 1/2 in. Together with a silk lampas coverlet trimmed with netted tassel fringe. Note: This lot does not include a mattress, box spring or bed slats.

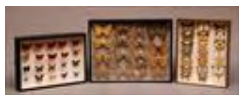
Estimate: \$ 400.00 - \$ 800.00



**Lot #176: VICTORIAN PAINTED CAST-METAL
KEROSENE LAMP**

The baluster-shaped standard rising from concave-sided base resting on scrolled feet. Together with an Empire-style candlestick lamp and a table lamp with Chinese polychrome carved wood base; kerosene lamp 34 1/2 x 7 1/2 x 7 1/2 in.

Estimate: \$ 50.00 - \$ 75.00



**Lot #177: COLLECTION OF NATURAL HISTORY
SPECIMENS**

Including a tortoise shell, section of coral and mounted butterflies and moths; tortoise shell 2 1/2 x 7 3/4 x 10 1/2 in.

Estimate: \$ 150.00 - \$ 250.00



**Lot #178: PAIR OF NEOCLASSICAL-STYLE PATINATED
METAL AND MARBLE URNS**

Each amphora-form body decorated with classical figures and anthemion; 11 1/2 x 6 1/2 in.

Estimate: \$ 250.00 - \$ 450.00



Lot #179: PARIANWARE FIGURE OF A SCULPTOR

Modeled wearing belted tunic, with left arm resting on a classical sculpture of a woman. Together with a gilt gesso and wood stand; 13 1/2 and 19 1/4 in.

Estimate: \$ 200.00 - \$ 400.00



**Lot #180: RENAISSANCE REVIVAL GILTWOOD PIER
MIRROR AND MARBLE-TOP CONSOLE**

The crest with pedimented cartouche over frieze with rosettes above arched mirror plate in conforming molded frame over console with oval top resting on s-shaped bracket; 12 ft. 4 1/2 in. x 34 1/2 x 14 in.

Estimate: \$ 700.00 - \$ 900.00

Lots 181 - 190



Lot #181: AMERICAN RENAISSANCE REVIVAL CARVED AND INCISED ROSEWOOD MARBLE-TOP CENTER TABLE

The shaped top over conforming frieze with raised panels above octagonal standard centered by four shaped supports over turned stretchers joining to blocks resting on toupie feet; 29 x 36 1/2 x 26 3/4 in.

Estimate: \$ 1000.00 - \$ 1500.00



Lot #182: VICTORIAN GILT-METAL MOUNTED MOLDED AND ENAMELED GLASS KEROSENE LAMP

The baluster-form body decorated with rosettes and scrolling leaves, electrified. Together with a Bristol pink glass vase; 19 1/2 in. (32 1/2 in. to shade).

Estimate: \$ 40.00 - \$ 60.00



Lot #182A: RENAISSANCE REVIVAL GILTWOOD OVERMANTEL MIRROR

The arched mirror plate in conforming molded frame surmounted by cartouche; 72 x 29 in.

Estimate: \$ 300.00 - \$ 600.00



Lot #183: VICTORIAN WAX FLOWER ARRANGEMENT IN GILTWOOD SHADOW-BOX FRAME

Frame 15 x 18 1/2 x 5 in.

Estimate: \$ 150.00 - \$ 250.00



Lot #184: FRENCH EGYPTIAN REVIVAL PAINTED AND GILT-METAL MOUNTED BLACK SLATE MANTEL CLOCK

The enameled dial with red Roman numerals set in pylon-form case with wing-and-disc decorated cavetto frieze, surmounted by an Assyrian winged bull and flanked by seated Egyptian figures, the plinth base decorated with Egyptian deities; 20 1/2 x 18 x 6 in.

Estimate: \$ 1000.00 - \$ 1500.00



Lot #184A: FOUR PAIRS OF VICTORIAN GREEN, PINK AND CREAM SILK BROCATELLE WINDOW CURTAINS

Trimmed with open braid and knotted cord. Together with four cord-and-tassel tie backs. Three pairs approx. 9 ft. 6 in. x 6 ft., one pair approx. 7 ft. 8 in. x 6 ft.

Estimate: \$ 300.00 - \$ 600.00



Lot #185: VICTORIAN-STYLE EBONIZED STAND

The round, molded marble-inset top over carved Nubian figure standing on molded round base, on lion's paw feet; 32 1/2 x 20 1/2 in. diam.

Estimate: \$ 300.00 - \$ 500.00



Lot #186: VICTORIAN SILK MOIRÉ-UPHOLSTERED WALNUT EASY CHAIR

The deep-buttoned outscrolled back above trapezoidal overupholstered seat flanked by horizontally rolled arms, on turned legs; 39 1/2 x 38 x 38 in.

Estimate: \$ 400.00 - \$ 600.00



Lot #187: NEOCLASSICAL-STYLE GILTWOOD COLUMN-FORM PEDESTAL

The round molded top over stop-fluted standard above base with egg-and-dart molding; 46 x 11 in. diam.

Estimate: \$ 200.00 - \$ 400.00



Lot #188: AMERICAN RENAISSANCE REVIVAL INCISED WALNUT AND FIGURED WALNUT BEDSTEAD

The arched and paneled headboard centering cartouche, the head posts surmounted by columns with finials, the paneled and arched footboard flanked by columnar posts; 91 1/2 x 65 x 86 1/2 in. Note: This lot does not include the bed coverings, mattress, box spring or bed slats.

Estimate: \$ 800.00 - \$ 1200.00



Lot #189: AMERICAN RENAISSANCE REVIVAL GILT-INCISED WALNUT FOUR-PIECE PARLOR SUITE

Comprising a sofa, an armchair and two side chairs, the sofa with triple back with arched crests applied with gilt rosettes, the center crest with classical portrait medallion, above overupholstered seat flanked by outscrolled arms, on turned legs, the armchair and side chairs of similar form and decoration; sofa 40 1/2 x 63 x 26 in., side chairs 36 x 20 1/2 x 24 in.

Estimate: \$ 750.00 - \$ 1000.00



Lot #190: TWO VICTORIAN MAJOLICA LOW PEDESTALS

One pedestal with Egyptian-style decoration on a blue ground, the other with flowers and acanthus leaves on an ivory ground. Together with a transfer-printed ironstone hexagonal stand; 22 3/4 x 11 in. diam. and 32 x 13 1/2 in. diam.

Estimate: \$ 700.00 - \$ 1000.00

[Back](#)

[Next](#)

Lots 191 - 200



Lot #191: VICTORIAN ZSOLNAY FAIENCE AND EBONIZED PEDESTAL

Together with a stick-and-ball hexagonal stand and a white-painted tray-top table; pedestal 37 3/4 x 11 1/4 x 11 1/4 in.
Estimate: \$ 600.00 - \$ 900.00



Lot #192: MERCURY GLASS GAZING BALL ON GOTHIC REVIVAL BRASS STAND

Together with another gazing ball, a porcelain candlestick and a bronze-patinated metal classical bust; gazing ball on stand; 18 1/2 in., 10 in. diam.
Estimate: \$ 50.00 - \$ 100.00



Lot #193: PAIR OF VICTORIAN MAJOLICA PEDESTALS

Each with round top over egg-and-dart, leaf and bead-and-reel moldings above standard decorated with trophy of musical instruments, on molded base; 44 x 16 in. diam.
Estimate: \$ 800.00 - \$ 1200.00



Lot #194: FRENCH MOORISH-STYLE MOTHER-OF-PEARL INLAID ROSEWOOD AND MARQUETRY LIBRARY TABLE AND A MATCHING PAIR OF SIDE CHAIRS

The table with shaped molded top inset with red plush and needlework panel over conforming apron decorated with leafy arabesques, one side fitted with drawer, on square tapering legs joined by shaped stretchers; each side chair with pointed-arch crest over red plush and needlework upholstered panel above trapezoidal seat with similar upholstery over shaped apron with leafy arabesques, on square tapering legs; table 29 1/2 x 43 1/2 x 25 1/2 in., side chairs 38 x 17 in.
Estimate: \$ 3500.00 - \$ 4500.00



Lot #195: LATE VICTORIAN TURKISH-STYLE SOFA WITH PRINTED PLUSH UPHOLSTERY

The rectangular padded back above overupholstered seat flanked by bolster-form arms suspending tassels, the base trimmed with bullion fringe; 40 x 72 x 30 in.
Estimate: \$ 1000.00 - \$ 2000.00



Lot #196: TURKISH PIERCED BRASS TABLE LAMP

Together with a Victorian painted cast-metal figural candlestick, mounted as a lamp; 25 1/2 in. and 34 in.

Estimate: \$ 50.00 - \$ 100.00



Lot #197: AMERICAN AESTHETIC MOVEMENT CARVED, INCISED AND EBONIZED CORNER CHAIR

The padded crest rails over pierced latticework panels above overupholstered seat, on straight legs; 24 1/2 x 23 1/2 x 23 1/2 in.

Estimate: \$ 400.00 - \$ 600.00



Lot #198: AESTHETIC MOVEMENT CARVED AND EBONIZED PEDESTAL

The rectangular molded top over conforming denticulated frieze above fluted turned standard flanked by figures of storks, rising from round plinth; 37 1/2 x 20 1/2 x 14 1/2 in.

Estimate: \$ 300.00 - \$ 500.00



Lot #199: AMERICAN AESTHETIC MOVEMENT SILVERPLATE PRESENTATION TWO-HANDLED TRAY

Rogers, New Haven, inscribed "Mr. & Mrs. Edward P. Yale Maynd 1852-1877," flanked by views of Poseidon, with diecast figural border and spool handles; 28 in.

Estimate: \$ 100.00 - \$ 200.00



Lot #200: TWO VICTORIAN GILT-GESSO WALL MIRRORS

One with round beveled mirror plate in conforming frame decorated with various moldings enclosed by floral border, the other with rectangular mirror plate in conforming frame decorated with grape clusters and grape leaves, the corners with rosettes; 30 in. diam. and 17 x 15 1/4 in.

Estimate: \$ 400.00 - \$ 600.00