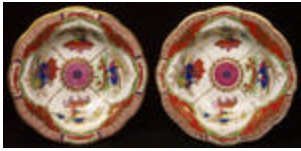


# Lots 1 - 10



**Lot #1:** PAIR OF CHAMBERLAIN WORCESTER SOUP PLATES.

**Descripton:** In the Bengal Tiger pattern, inscribed in iron red above No. 75.

dimensions: 9 and 3/4 inches

Estimate: \$400.00 - \$600.00



**Lot #2:** SET OF EIGHT CROWN DERBY "IMARI PATTERN" LUNCH PLATES.

**Descripton:** With crown monogram and iron red above no. 383.

dimensions: 9 inches diameter

Estimate: \$300.00 - \$400.00



**Lot #3:** GROUP OF FIVE PORCELAIN TABLE ARTICLES.

**Descripton:** Comprising: Derby floral decorated 11 1/2 inch serving dish with gold anchor mark, two-handled cup with floral spray and bird in flight, pair of Berlin floral decorated two-handled urns, English floral-decorated still wells.

dimensions: 4 inches to five inches long

Estimate: \$300.00 - \$500.00



**Lot #4:** SET OF EIGHT WORCESTER PORCELAIN TEA BOWLS AND SAUCERS.

**Descripton:** Underglazed blue seal mark, each decorated with prunus blossoms.

Estimate: \$500.00 - \$700.00



**Lot #5:** PAIR OF ENGLISH PORCELAIN CYLINDRICAL CUPS & COVERS.

**Descripton:** One with underglazed blue "C" mark, transfer decorated with roses, morning glories and butterflies, floral knob.

dimensions: 3 3/4 inches high

Estimate: \$100.00 - \$200.00



**Lot #6:** WORCESTER PORCELAIN BLUE & WHITE BUTTER TUB & COVER.

**Descripton:** With underglazed crescent mark; with scroll handles decorated with a pagoda on an island, birds, peonies and garden fence, floral knob.

dimensions: 4 3/4 inches wide

Estimate: \$100.00 - \$200.00



**Lot #7: PAIR OF WORCESTER PORCELAIN OVAL BUTTER TUBS WITH COVERS AND STANDS.**

**Descripton:** With underglazed blue crescent mark, decorated with roses, tulips and morning glories; together with a matching 8 1/2 inch two-handled stand.

dimensions: of pair 7 1/2 inches wide

Estimate: \$400.00 - \$600.00



**Lot #8: ENGLISH CREAMWARE SMALL TUREEN & COVER.**

**Descripton:** Of oval cross section and beaker form, loop handles and grisaille loop foliate borders.

Estimate: \$400.00 - \$600.00



**Lot #9: PAIR OF CREAMWARE SAUCE TUREENS.**

**Descripton:** With stands and covers. The oval bowls with lozange stands and grisaille grape vine borders. Each cover cracked.

Estimate: \$500.00 - \$700.00



**Lot #10: PAIR OF LEEDS CREAMWARE RETICULATED OVAL PLATES.**

**Descripton:** With basket-weave surfaces and brown highlights.

dimensions: 9 and 3/4 inches wide

Estimate: \$300.00 - \$400.00

# Lots 11 - 20



**Lot #11:** PAIR OF SPODE PLATES.

**Description:** With bronzed scenes of classical figures, gilt foliate cavetti and iron red scrollwork border.

dimensions: 9 inches wide

Estimate: \$300.00 - \$500.00



**Lot #12:** WORCESTER PORCELAIN WHITE GROUND PART TEA SERVICE.

**Description:** Comprising: a teapot, cover and stand, three tea bowls and three saucers; each piece of spiral-fluted form with gilt rims, the spout and handle of the teapot gilt with foliage and the knob with a flowerhead.

Estimate: \$150.00 - \$200.00



**Lot #13:** ENGLISH CREAMWARE PLATE.

**Description:** Transfer-printed in black with an oval medallion of the seated Minerva and her owl flanked by trophies of dead game and a side loped rim with shell molded devices.

dimensions: 10 inches wide

Estimate: \$300.00 - \$500.00



**Lot #14:** ENGLISH CREAMWARE PLATE.

**Description:** The center transfer-printed in black with two exotic birds strutting on a plateau beneath other birds in flight, the rim with further vignettes of exotic birds within a feather-molded rim edge.

dimensions: 9 1/2 inches wide

Estimate: \$300.00 - \$500.00



**Lot #15:** DUTCH DECORATED ENGLISH CREAMWARE PLATE.

**Description:** Painted in the center with a scene depicting the "Parable of the Hidden Treasure".

dimensions: 8 1/4 wide

Estimate: \$500.00 - \$700.00



**Lot #16:** STAFFORDSHIRE PEARLWARE SILVER RESIST PART TEA SERVICE.

**Description:** Comprising a teapot and cover, milk jug, pair of dessert trays, four tea bowls and six saucers. (14 pieces)

Estimate: \$400.00 - \$600.00



**Lot #17:** STAFFORDSHIRE POTTERY LUSTER THREE-PIECE TEA SERVICE.

**Description:** Comprising a teapot and cover and a milk jug, and an associated sugar bowl and cover; each piece of fluted bombe form, the teapot and milk jug applied with C-scroll handles, the sugar bowl with molded foliate handles.

Estimate: \$150.00 - \$250.00



**Lot #18:** THREE STAFFORDSHIRE POTTERY PITCHERS.

**Description:** Comprising a Portobello pitcher decorated with a chinoiserie figural scene, a yellow ware silver resist pitcher decorated in foliate patterns; and a pink lustreware "House" pattern pitcher. Various cracks and breaks.

dimensions: Portobello Pitcher 5 1/2 inches tall, Yellow ware Pitcher 5 3/4 inches tall, Pink Lustreware Pitcher 4 1/2 inches tall.

Estimate: \$150.00 - \$200.00



**Lot #19:** CHRISTIAN'S LIVERPOOL COFFEE POT WITH COVER.

**Description:** Of baluster form, painted with sprigs and a floral spray on each side in shades of puce, yellow, blue, green and iron-red, the neck surrounded by an iron-red scallop and dot band, the handle with comma terminal, the similar cover surrounded by a matching border.

dimensions: 9 inches high

Estimate: \$400.00 - \$600.00



**Lot #20:** WEDGWOOD CREAMWARE 4 PIECE TEA SET AND MATCHING TRAY.

**Description:** Impressed Wedgwood mark and THA, Transfer decorated in iron red with foo dogs butterflies and floral sprigs, comprising a spherical tea pot, covered creamer and covered sugar bowl with faux bois handles, and a waste pail.

dimensions: pot 3 7/8 inches high, tray 17 inches long

Estimate: \$400.00 - \$600.00

# Lots 21 - 30



**Lot #21:** WEDGWOOD ETRURIA PART TEA SERVICE.

**Descriptor:** With transfer-decorated floral decoration. Comprising: 12 tea cups, 11 saucers, 12 plates, covered tea pot, covered sugar bowl, creamer and two handled cake plate.

(approx. 40 pieces)

Estimate: \$150.00 - \$200.00



**Lot #22:** PAIR OF WEDGWOOD BLACK BASALTES CANDLESTICKS.

**Descriptor:** Relief molded with classical figures; together with six Wedgwood black basaltes demi-tasse cups and saucers matching covered sugar bowl and creamer with unembellished surfaces. (approx 16 pieces)

dimensions: candlesticks 4 3/4 inches high

Estimate: \$175.00 - \$225.00



**Lot #23:** TWO SIMILAR BASALTES CREAMERS.

**Descriptor:** One impressed "Princess Royal".

approximately 4 inches tall

Estimate: \$80.00 - \$120.00



**Lot #24:** WEDGWOOD TRANSFER- DECORATED PART DINNER SERVICE.

**Descriptor:** In the "Napoleon Ivy" pattern.

Comprising: 8 dinner plates, 10 salad plates, 10 broad rim soup plates, 10 bread & butter plates, 10 cups and 10 saucers, 10 bowls, covered vegetable dish, covered butter dish, sauce boat and stand, oval vegetable dish and 8 other serving pieces, (81 pieces)

Estimate: \$250.00 - \$350.00



**Lot #25:** THE VILLAGERS CHARM TO LURE THE BEES AND THE MIRTH AND PLEASURES OF A COUNTRY FAIR.

**Descriptor:** Black and white engravings on paper, R. Pollard, publisher, each image 16 inches x 20 inches (sight), matted and framed under glass.

Estimate: \$125.00 - \$175.00



**Lot #26:** SELLING RABBITS AND THE GLEANERS RETURNED.

**Descripton:** Black and white engravings, each 17 and 3/4 inches x 23 and 1/2 inches (sight) matted & framed under glass.  
Estimate: \$50.00 - \$75.00



**Lot #27:** DOMESTIC SCENE.

**Descripton:** Black & white engraved on paper, oval image, 17 inches x 13 and 3/4 inches, laid down on board, under glass in a rectangular gold frame.  
Estimate: \$20.00 - \$30.00



**Lot #28:** MORNING AMUSEMENT AND ANOTHER PRINT.

**Descripton:** Two colored engravings on paper. The larger 17 and 1/2 inches x 23 inches (sight), both framed under glass.  
Estimate: \$40.00 - \$60.00



**Lot #29:** "THE COUNTRY CLERGYMAN" AND "THE FATHERS ADMONITION".

**Descripton:** Colored engravings on paper, each 13 inches x 16 and 1/2 inches (image) framed under glass.  
Estimate: \$75.00 - \$125.00



**Lot #30:** TOWN & COUNTRY COSTUMES.

**Descripton:** A pair of sepia oval mezzotints, each 4 and 3/4 inches x 3 and 3/4 inches, in gilded liners in painted frames.  
Estimate: \$40.00 - \$60.00

## Lots 31 - 40



**Lot #31:** SIX ROUND ENGRAVINGS.

**Description:** One black and white, the others colored, framed under glass. One set of three one set of two and one individual (pictured). The largest approximately 15 inches diameter.  
Estimate: \$75.00 - \$100.00



**Lot #32:** FOUR OVAL COLORED ENGRAVINGS, THREE FIGURAL, ONE LANDSCAPE.

**Description:** Two identified on verso, the first "Jane Shore introduced to King Edward IV" the second "The jealousy of Lord Darnley Husband of Mary Queen of Scotts" approximately 13 and 1/2 inches x 15 and 1/2 inches (including frame).  
Estimate: \$75.00 - \$100.00



**Lot #33:** DOG PORTRAIT.

**Description:** Black and white print on paper, 9 3/4 inches x 9 5/8 inches, (image, sight) in a modern frame.  
Estimate: \$50.00 - \$75.00



**Lot #34:** DOG PORTRAIT (PROFILE).

**Description:** Watercolor on paper, 4 1/4 inches x 5 1/4 inches (image) in a painted molded plaster frame.  
Estimate: \$75.00 - \$125.00



**Lot #35:** JACK RUSSELL TERRIER.

**Description:** Pastel on paper, 10 1/4 inches x 14 1/2 inches (sight) in a painted plaster decorated frame.  
Estimate: \$250.00 - \$350.00



**Lot #36:** IN THE DOGHOUSE.

**Description:** Oil on canvas, 12 inches x 8 inches in a carved and partially gilded wooden frame.

Estimate: \$75.00 - \$100.00



**Lot #37:** TERRIERS RATTING IN A BARN.

**Description:** Oil on wooden panel, 8 and 1/4 inches x 7 inches, with "Armfield" signature lower left, in a wood and tortoise shell frame.

Estimate: \$700.00 - \$900.00



**Lot #38:** SLEEPING HOUNDS.

**Description:** Oil on panel, 9 inches x 11 1/2 inches in a gilded liner and painted plaster decorated frame.

Estimate: \$225.00 - \$325.00



**Lot #39:** COURSING HOUNDS.

**Description:** Oil on wooden panel, 6 1/2 inches x 9 inches, in a gilded frame.

Estimate: \$175.00 - \$225.00



**Lot #40:** POODLE IN A LANDSCAPE.

**Description:** Oil on canvas, 10 inches x 14 inches.

Estimate: \$250.00 - \$350.00



# Lots 41 - 50



**Lot #41:** DOG WITH TORN CLOTH.

**Description:** Oil on canvas, 10 inches x 16 inches, signed lower right "R. Ramsey", in a metal leaf frame. Estimate: \$300.00 - \$500.00



**Lot #42:** LONG-HAIRED DACHSHUND.

**Description:** Oil on canvas, 12 inches x 14 inches signed lower left "P Donovan". Estimate: \$250.00 - \$350.00



**Lot #43:** CAT & KITTENS.

**Description:** Oil on panel, 8 inches x 10 inches, in a gilded liner and ogee wooden frame. Signed indistinctly lower right. Estimate: \$125.00 - \$175.00



**Lot #44:** BAY HORSE IN A LANDSCAPE.

**Description:** Oil on canvas, 26 1/4 inches x 36 inches, signed lower left "W. Barraud" in a carved and gilded frame. Estimate: \$1500.00 - \$2000.00



**Lot #45:** "VIRGIL" .

**Description:** Oil on canvas, 18 inches x 24 inches, signed and dated lower left "Henry Stull / 1880", and inscribed on verso "Virgil/1880"; in a wooden frame with gilded liner. Estimate: \$2000.00 - \$3000.00



**Lot #46:** BLACK HORSE WITH A WHITE BLAZE IN A LANDSCAPE.

**Description:** Oil on canvas, 19 3/4 inches x 24 inches, signed and dated lower right " Raoul Millais/1967", bearing label on verso from the collection of Miss Jeanne Courtauld #27775; in a linen liner and modern frame. Estimate: \$2000.00 - \$3000.00



**Lot #47: "MARES AND FOALS AT SUNSET".**

**Description:** Oil on canvas 23 1/4 inches x 32 1/4 inches, signed lower right "John King/1961" and titled verso on the stretcher; in a linen liner and a modern gilded frame.

Estimate: \$2000.00 - \$3000.00



**Lot #48: "GRAND ANNUAL CHASE".**

**Description:** Oil on canvas, 24 inches x 36 inches, signed lower right "John King/ 1962/ Cheltenham" and inscribed on the stretcher "Grand Annual Chase 1962/Croise"; in a linen liner and modern gilded frame.

Estimate: \$1000.00 - \$1500.00



**Lot #49: PERSIAN CARPET.**

**Description:** The ivory field with all over vine work, within salmon primary and two celadon guard borders. dimensions: approximately 8 feet x 11 feet 5 inches

Estimate: \$1000.00 - \$1500.00



**Lot #50: BOKARA CARPET.**

**Description:** The wine red field worked with six rows of octagonal gulls within multiple borders. dimensions: approximately 8 feet 5 and 12 inches x 2 and 1/2 inches

Estimate: \$600.00 - \$800.00

# Lots 51 - 60



**Lot #51:** PERSIAN SIGNATURE LONG RUG.

**Description:** The cream field with four latched tan diamonds, primary cafe au lait border and two striped guard borders.  
dimensions: approximately 34 inches x 6 feet 1 inch  
Estimate: \$125.00 - \$175.00



**Lot #52:** SHIRAZ RUG.

**Description:** The stepped wine red field on blue ground within three borders.  
dimensions: 5 feet 2 inches x 7 feet 4 inches  
Estimate: \$600.00 - \$800.00



**Lot #53:** PERSIAN CARPET.

**Description:** The wine red field with tree and flower branch medallions within primary indigo border and four guard borders. (one selvage frayed)  
dimensions: approximately 9 feet 4 inches x 11 feet 9 and 1/2 inches  
Estimate: \$1000.00 - \$1500.00



**Lot #54:** BALUCHISTAN RUG.

**Description:** With dark blue field, rose and rosettes with in wine red primary borders and guard borders.  
dimensions: approximately 44 inches x 6 feet 6 inches  
Estimate: \$150.00 - \$200.00



**Lot #55:** TURKISH CARPET.

**Description:** The abraded light blue field with foliate lattice overlay, within primary cafe au lait border.  
dimensions: approximately 9 feet 1 1/2 inches x 11 feet 7 1/2 inches  
Estimate: \$600.00 - \$800.00



**Lot #56:** TWO MOLDED COMPOSITION FIGURES OF BLACK YOUTHS.

**Description:** One standing holding a pink top hat and one barefoot lying down with hand on chin.  
dimensions: 11 inches high (larger)  
Estimate: \$75.00 - \$100.00



**Lot #57:** ENGLISH BRASS-BANDED MAHOGANY BUCKET.

**Description:** Of cylindrical form with three bands.  
dimensions: 8 1/2 inches high  
Estimate: \$40.00 - \$60.00



**Lot #58:** REGENCY STYLE BRASS-MOUNTED MESH WORK U-SHAPED FENDER

**Description:**  
dimensions: 4 feet 3/4 inches long  
Estimate: \$100.00 - \$200.00



**Lot #59:** REGENCY STYLE BRASS MOUNTED SHEET METAL FIRE FENDER.

**Description:** With pierced chinoiserie fret band.  
dimensions: 4 feet long  
Estimate: \$100.00 - \$200.00



**Lot #60:** ENGLISH BRASS-MOUNTED CAST IRON SCALE.

**Description:** W. & T. Avery, Birmingham. The spiral twist stem with adjustable cross arm fitted with a chained and an L-hooked brass pan; together with a nest of 5 weights.  
dimensions: 22 1/4 inches high, 23 inches long  
Estimate: \$200.00 - \$300.00

# Lots 61 - 70



**Lot #61:** FRENCH MEDIEVAL STYLE THREE-PIECE CLOCK GARNITURE.

**Description:** The movement by Japy Freres. The clock with octagonal face on spindle supports, with spires centering a brass bell; the candelabra with two crenellated drip pans; on walnut bases.  
dimensions: height of clock 23 1/2 inches  
Estimate: \$300.00 - \$500.00



**Lot #62:** GEORGE III MAHOGANY LIBRARY ARMCHAIR.

**Description:** The serpentine crested rail above a padded back rest and seat covered in old needlework, with carved arms. The whole supported by square chamfered legs, joined by an "H" shaped stretcher.  
Estimate: \$3000.00 - \$5000.00



**Lot #63:** PAIR OF REGENCY STYLE CARVED, IVORY PAINTED AND PARCEL-GILT OPEN ARMCHAIRS, IN THE MANNER OF HENRY HOLLAND.

**Description:** Each curved top rail with 1/2 round fan terminals above upholstered back and fluted uprights, the bow-fronted seat above beaded panel and raised on fluted, tapered legs.  
Estimate: \$1000.00 - \$1500.00



**Lot #64:** SET OF FOUR CHIPPENDALE STYLE CARVED MAHOGANY "RIBBAND-BACK" PANELS.

**Description:** Each pierced panel with acorn-laden branches and ribbonwork, oak frames.  
dimensions: each 21 1/2 inches x 22 inches  
Estimate: \$800.00 - \$1200.00



**Lot #65:** REGENCY STYLE MAHOGANY CIRCULAR-TOP DINING TABLE.

**Description:** The molded top raised on four column-form supports joined by a ring stretcher and raised on splayed legs ending in brass cup casters.  
dimensions: 31 inches high x 5 feet 6 inches deep  
Estimate: \$1000.00 - \$1500.00



**Lot #66:** PAIR OF REGENCY STYLE CARVED GREEN PAINTED AND PARCEL GILT STOOLS.

**Description:** Each with roll-over arms on fluted supports continuing into the rails and arched legs. dimensions: length over arms 33 inches  
Estimate: \$200.00 - \$300.00



**Lot #67:** PAIR OF REGENCY STYLE CARVED IVORY PAINTED AND PARCEL-GILT STOOLS.

**Description:** Each with roll over arms on fluted supports continuing into the rails and arched legs. dimensions: 33 inches wide  
Estimate: \$200.00 - \$300.00



**Lot #68:** SMALL ENGLISH SIDEBOARD.

**Description:** The bow-fronted case fitted with four drawers raised on square tapering legs and spade feet. dimensions: 35 and 1/2 inches high x 42 inches wide x 22 inches deep  
Estimate: \$1800.00 - \$2200.00



**Lot #69:** MECHANICAL MAHOGANY WRITING TABLE.

**Description:** The upper section containing a bank of drawers above a sliding top revealing a writing surface and drawers, raised on turned and reeded legs. dimensions: 42 inches high x 57 inches wide x 28 inches deep  
Estimate: \$1400.00 - \$1600.00



**Lot #70:** SERPENTINE FRONT CHESTERFIELD SETTEE.

**Description:** The padded and button tufted arms back and seat supported by two turned feet. dimensions: 27 inches high x 75 inches wide x 35 inches deep  
Estimate: \$1200.00 - \$1400.00

# Lots 71 - 80



**Lot #71:** WILLIAM & MARY STYLE SIDEBOARD.

**Description:** The veneered top above a case with six drawers and a shaped and molded frieze with turned legs and a wavy stretcher ending in bun feet.  
dimensions: 35 and 1/2 inches high x 66 inches long x 21 inches deep

Estimate: \$1600.00 - \$1800.00



**Lot #72:** ENGLISH SETTEE.

**Description:** With a flat back above five arched inset panels on a board seat supporting arms and raised on cabriole legs.

dimensions: 40 1/2 inches high x 72 inches wide x 25 inches deep

Estimate: \$800.00 - \$1200.00



**Lot #73:** QUEEN ANNE WALNUT CARD TABLE.

**Description:** The double top opening to reveal a baize lined surface above a frieze drawer raised on four turned legs and pad feet.

dimensions: 27 and 1/2 inches high x 30 and 1/2 inches wide x 15 inches deep

Estimate: \$800.00 - \$1200.00



**Lot #74:** NEAR PAIR OF CHIPPENDALE STYLE MAHOGANY AND PARCEL-GILT WALL MIRRORS.

**Description:** The fret pierced cresting with carved and gilt HO HO Bird above a central rectangular plate and fret carved outer frame.

28 inches high x 17 inches wide

Estimate: \$400.00 - \$600.00



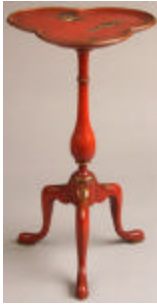
**Lot #75:** GEORGE I MAHOGANY TRAY TOP TABLE.

**Description:** The galleried top pierced with handles, above a frieze drawer and raised on tapered legs joined by an x-stretcher and ending in pad feet.

Provenance: Apter Fredricks Ltd.

dimensions: 28 3/4 inches high x 20 and 1/2 inches long

Estimate: \$400.00 - \$600.00

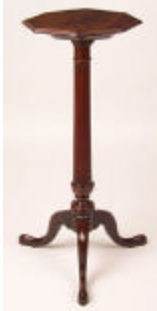


**Lot #76:** GEORGIAN STYLE CINNABAR LACQUER TRIPOD CANDLESTAND.

**Description:** The trefoil tray top decorated with figures in boats.

dimensions: 18 inches high x 10 inches wide

Estimate: \$200.00 - \$300.00



**Lot #77:** GEORGE III INLAID MAHOGANY CANDLESTAND.

**Description:** The octagonal top with ebonized and fruitwood inlay on a fluted pedestal and tripod cabriole legs.

dimensions: 29 inches high x 11 and 1/2 inches wide

Estimate: \$400.00 - \$600.00



**Lot #78:** GEORGE III STYLE MAHOGANY STOOL.

**Description:** With gros and petite needlework panel raised on square tapered molded legs.

dimensions: width 17 inches

Estimate: \$200.00 - \$300.00



**Lot #79:** ENGLISH ARTS & CRAFTS STYLE MAHOGANY BREAKFAST TABLE.

**Description:** After a design by Phillip Webb for Morris & Co., the circular top with reeded edge, raised on seven faux bamboo legs joined by conforming stretchers.

dimensions: 29 3/4 inches high x 4 feet 2 inches wide

Estimate: \$1200.00 - \$1800.00



**Lot #80:** PAIR OF EDWARD LUYTENS DESIGN OAK & CANE CHAIRS.

**Description:** In the "New Delhi" pattern, each shaped top rail above cane back and armrests on turned supports, the cane seat on turned and block legs.

Estimate: \$500.00 - \$700.00



# Lots 81 - 90



**Lot #81:** ENGLISH MOTHER-OF-PEARL INLAID TOLE BED.

**Description:** The arched head and footboards with gilt decoration and inlaid mother-of-pearl, joined by metal stretchers and bed rails.  
dimensions: 70 inches high approximately x 41 inches wide approximately x 79 inches long approximately  
Estimate: \$1200.00 - \$1400.00



**Lot #82:** TWO TABLE ARTICLES.

**Description:** Comprising: a tooled leather day-of-the-week stationery box and a French papier-mache patch box with engraved figural panel.  
Estimate: \$150.00 - \$200.00



**Lot #83:** GEORGE III BLACK PAINTED TOLE LANTERN.

**Description:** With tapered glass-paneled sides, pierced rectangular base, oval dome chimney.  
dimensions: 17 inches high x 10 1/4 inches wide  
Estimate: \$100.00 - \$200.00



**Lot #84:** PAIR OF BRASS-MOUNTED AMBER GLASS HALL LANTERNS.

**Description:** Each of lobe ovoid form with everted rim, with three chain supports.  
dimensions: overall approximately 18 1/2 inches  
Estimate: \$400.00 - \$600.00



**Lot #85:** BRASS-MOUNTED AMBER GLASS LANTERN.  
**Description:** The squat bowl with brass pendant, joined to chimney cover by three chains.  
dimensions: length approx. 16 inches  
Estimate: \$100.00 - \$150.00



**Lot #86:** ENGLISH CAST IRON BOOK PRESS.  
**Description:** S. Mordan & Co., London. The rectangular plates with spiral twist T-handle.  
dimensions: 12 1/2 inches high x 16 inches long  
Estimate: \$80.00 - \$120.00



**Lot #87:** PAIR OF ENGLISH AESTHETICS MOVEMENT EBONIZED WOOD HANGING SHELVES WITH PAINTED FLORAL RONDELS.  
**Description:** Each mirror back with two D-shaped galleried shelves centering gold-ground floral rondels  
dimensions: 36 inches high x 17 3/4 inches wide  
Estimate: \$300.00 - \$500.00



**Lot #88:** GROUP OF FIVE INDIAN QUILL-MOUNTED EBONY BOXES.  
**Description:** Comprising four rectangular boxes and an hexagonal box, with ivory-inlaid ebony bands, some opening to Elephant medallions.  
dimensions: lengths 7 inches to 11 1/4 inches  
Estimate: \$700.00 - \$900.00



**Lot #89:** CHINESE METAL-MOUNTED RED LACQUER PICNIC BOX.  
**Description:** The oval domed top with carrying handle, and a D-shaped lid with brass drop lock, above tapered sides.  
dimensions: 11 3/4 inches high x 12 3/4 inches long  
Estimate: \$40.00 - \$60.00



**Lot #90:** LOUIS XVI STYLE BRASS TWO-LIGHT BOUILLOTTE LAMP.

**Description:** With toile peinte shade.  
dimensions: 18 inches high  
Estimate: \$80.00 - \$120.00

## Lots 91 - 100



**Lot #91:** AMERICAN PRESSED GLASS TABLE SERVICE.

**Description:** Comprising: oval spot decoration ten water goblets, one 12 inch plate, 2, 9 1/2 inch oblong octagonal plates, 2, 12 1/2 inch two-handled plates, two covered bowls, a beaker and a creamer.  
Estimate: \$75.00 - \$100.00



**Lot #92:** AMERICAN ENGRAVED GLASS STEMWARE SET.

**Description:** Comprising: 12 water goblets and 12 red wines with bell form bowls engraved with floral medallions.  
Estimate: \$200.00 - \$300.00



**Lot #93:** SET OF EIGHT CUT-GLASS WINE GLASSES.

**Description:** With diamond faceted bowls.  
Estimate: \$125.00 - \$175.00



**Lot #94:** TWO ENGRAVED GLASS TABLE ARTICLES.

**Description:** Comprising: a small centerpiece with squat bowl and trumpet-form flower holder, and a large stemmed goblet, each engraved with ferns.  
dimensions: 13 inches high and 10 inches high  
Estimate: \$80.00 - \$120.00



**Lot #95:** GROUP OF RUBY GLASS TABLE ARTICLES.



**Lot #95:** GROUP OF RUBY GLASS TABLE ARTICLES.

**Description:** Comprising: a pair of engraved candlesticks; an engraved footed 4 inch bowl; pair of pressed and engraved beakers, ring necked decanter and stopper; and pair of ovoid cruets and stoppers with gilt bands.

dimensions: 3 3/4 inches high to 9 inches high (8 pieces)

Estimate: \$200.00 - \$300.00



**Lot #96:** PAIR OF CUT GLASS CANDLESTICKS MOUNTED AS LAMPS.

**Description:** Each faceted pear-form stem with dome base.

dimensions: height of sticks 12 inches.

Estimate: \$100.00 - \$150.00



**Lot #97:** JAPANESE BRONZE TWO-HANDLED VASE MOUNTED AS A LAMP.

**Description:** Relief applied with birds perched on flowering branches, flanked by grotesque mask head handles, dome base, fitted with oil holder.

dimensions: 22 inches high

Estimate: \$125.00 - \$175.00



**Lot #98:** CHINESE GREEN CRACKLE-GLAZED BALUSTER-FORM VASE MOUNTED AS A LAMP, HARDWOOD BASE

**Description:** -

dimensions: 21 inches high

Estimate: \$100.00 - \$150.00



**Lot #99:** PAIR OF CHINESE BLACK GROUND CLOISSONNE VASES MOUNTED AS LAMPS.

**Description:** Each with floral branch and vinework decoration beneath tassled border.

dimensions: 21 inches overall

Estimate: \$200.00 - \$300.00



**Lot #100:** TWO SIMILAR AMERICAN PRESSED AMETHYST GLASS OIL LAMPS.

**Description:** Of faceted bell form, on stepped bases.  
dimensions: 12 1/2 inches high  
Estimate: \$200.00 - \$300.00