

Lots 101 - 110



Lot #101: INTERIOR-DECORATED GLASS BALUSTER-FORM VASE MOUNTED AS A LAMP.

Description: With Chinoiserie figures and floral branches on an ivory ground.
dimensions: height of vase 9 1/2 inches
Estimate: \$175.00 - \$225.00



Lot #102: "FAMILLE ROSE" APPLE GREEN GROUND BALUSTER-FORM VASE MOUNTED AS A LAMP.

Description: Enamel decorated with pink, lavender, blue and yellow floral branches, a bridge with birds in flight, gilt-metal base and collar.
dimensions: height of vase 12 inches.
Estimate: \$200.00 - \$300.00



Lot #103: PAIR OF "FAMILLE ROSE" BALUSTER-FORM VASES MOUNTED AS LAMPS.

Description: Enamel decorated with pink roses, butterflies and gilt scroll work.
dimensions: 24 1/2 inches high.
Estimate: \$300.00 - \$400.00



Lot #104: PAIR OF BLACK LACQUER OVOID VASES MOUNTED AS LAMPS.

Description: Decorated with gilt chinoiserie flowers, birds and a bridge.
dimensions: height of vases 15 3/4 inches
Estimate: \$200.00 - \$300.00



Lot #105: HAMPSHIRE GREEN-GLAZED POTTERY TABLE LAMP.

Description: Of squat globe form, with removable well section, electrified.
Impressed "Hampshire Pottery"
dimensions: 19 inches overall
Estimate: \$400.00 - \$600.00



Lot #106: GROUP OF FOUR BLUE & WHITE MILK JUGS.

Description: One Copeland with bridge and tower, one with Chinamen and pagoda, one with figures in a boat and ruins, the last with a figure in a boat and a harpist.
Estimate: \$200.00 - \$300.00



Lot #107: GROUP OF FOUR BLUE & WHITE TRANSFER-DECORATED JUGS.

Description: Comprising: one with family on a road, one a Latin Tiber jug, one of barrell form with ducks, one Copeland "Spode" Italian.
dimensions: 33 1/2 inches high to 5 inches high
Estimate: \$150.00 - \$200.00



Lot #108: GROUP OF THREE STAFFORDSHIRE BLUE & WHITE PITCHERS.

Description: The first with a waterfall underglaze blue #8, the second two figures with sheep, thatched cottage and windmill, the third with three figures, dog, bridge and church tower.
dimensions: 8 3/4 inches high, 8 inches high and 9 inches high
Estimate: \$200.00 - \$300.00



Lot #109: TWO STAFFORDSHIRE BLUE & WHITE OVOID PITCHERS.

Description: The one with figures in a rowboat, the other is a Stone China "Willow" pattern pitcher.
dimensions: 8 3/4 inches high and 9 inches high
Estimate: \$150.00 - \$200.00



Lot #110: TWO STAFFORDSHIRE BLUE & WHITE PLATTERS.

Description: The first of oval scalloped outline, in the "Verona Italian" pattern, with gilt scroll handles, the second oval scalloped outline in the "Verandah Pattern" by Davenport.
dimensions: 17 1/4 inches oval, 23 inches oval
Estimate: \$200.00 - \$300.00

Lots 111 - 120



Lot #111: STAFFORDSHIRE BLUE & WHITE OVAL MEAT DISH STRAINER.

Description: Impressed Sharpe, figures in deer park.

dimensions: 15 inches

Estimate: \$100.00 - \$150.00



Lot #112: STAFFORDSHIRE BLUE & WHITE CHAMFERED RECTANGULAR PLATTER.

Description: Decorated with couple with child and dog in garden by river's edge with crane and dolphin fountain.

dimensions: 21 3/4 inches wide

Estimate: \$300.00 - \$400.00



Lot #113: GROUP OF THREE STAFFORDSHIRE BLUE & WHITE RECTANGULAR PLATTERS.

Description: The first with mounted figures visiting a country house, shaped gadrooned border; the second with a horse and cart in farmyard; and the third with a family by river's edge gazing at a castle, impressed crown mark.

dimensions: First one 13 3/4 inches long, Second one 12 5/8 inches long, Third one 12 1/2 inches long

Estimate: \$200.00 - \$300.00



Lot #114: TWO BLUE & WHITE RECTANGULAR CHAMFERED PLATTERS.

Description: The first by Copeland and Barret, late Spode, with impressed rondel, in "The Dog in the Manger Pattern" from Aesop's Fables series, the second with rabbits outside a burrow beneath thatched cottages.

dimensions: of each 18 and 3/4 inches wide

Estimate: \$250.00 - \$350.00



Lot #115: TWO STAFFORDSHIRE BLUE & WHITE CHAMFERED RECTANGULAR PLATTERS.

Description: One rectangular 17 1/2 inches wide and one oval 17 inches wide. Impressed mark 16 on both.

Estimate: \$300.00 - \$400.00



Lot #116: TWO STAFFORDSHIRE BLUE & WHITE CHAMFERED RECTANGULAR PLATTERS.

Description: One Semi-China, with fountain, deer and figures in a country house park, second impressed "Impb.Co" in the "Italian Lakes" pattern".
dimensions: one 16 1/2 inches long and the other 15 inches long

Estimate: \$200.00 - \$300.00



Lot #117: STAFFORDSHIRE BLUE & WHITE CHAMFERED RECTANGULAR PLATTER.

Description: Decorated with fisherman with nets, colonnated house, flower and grape bunch border.
dimensions: 20 3/4 inches long

Estimate: \$300.00 - \$400.00



Lot #118: STAFFORDSHIRE BLUE & WHITE CHAMFERED RECTANGULAR PLATTER.

Description: With oval scene of Chinese figures within a floral border. Impressed #20.
dimensions: 21 inches long

Estimate: \$300.00 - \$400.00



Lot #119: PAIR OF SPODE BLUE & WHITE OVAL STANDS.

Description: Impressed Spode above the letter "D", decorated with an arched bridge and tower, together with an oval 9 1/2 inch dish showing figures among ruins, a 10 inch oval stand showing Gothic church ruins, 8 3/4 inches in oval vegetable dish with figures across a lake from a village. (5 pieces)

Estimate: \$200.00 - \$300.00



Lot #120: PAIR OF ENGLISH TRANSFER-DECORATED PORCELAIN TWO HANDLED BASKETS.

Description: In the manner of canton ware, one with underglaze blue X mark.

dimensions: 8 1/2 inches wide

Estimate: \$150.00 - \$250.00

Lots 121 - 130



Lot #121: THREE STAFFORDSHIRE BLUE & WHITE TABLE ARTICLES.

Description: Comprising: a reticulated two handled basket in the "British Scenery" pattern, a two-handled platter in the "Rural Scenery" pattern and a scalloped rectangular dish in the "Ciala Kavak" pattern.
Estimate: \$200.00 - \$300.00



Lot #122: GROUP OF SEVEN BLUE & WHITE TRANSFER-DECORATED PLATES.

Description: Comprising: two 7 1/4 inch plates and a pair of seven and one half inch plates with pierced borders showing two huntsmen and dogs, a pair of 6 1/2 plates showing rabbits in a burrow fitted in ebonized frames, a 7 1/2 inch plate by Rogers inscribed "Who was it when we both were young..."
Estimate: \$150.00 - \$250.00



Lot #123: SET OF SIX STAFFORDSHIRE BLUE & WHITE RETICULATED PLATES.

Description: Impressed 7.14, each with a mounted figure and a maiden, cows in front of a thatched cottage.
dimensions: 9 1/4 inches diameter
Estimate: \$125.00 - \$150.00



Lot #124: GROUP OF EIGHT MISCELLANEOUS STAFFORDSHIRE BLUE AND WHITE PLATES.

Description: Comprising: a pair of 10 3/4 inch soup plates in the "Country Scenery Pattern", a pair of 10 3/4 plates, in the "Canova Pattern" by T. Mayer, and four other plates.
Estimate: \$175.00 - \$225.00



Lot #125: GROUP OF THREE STAFFORDSHIRE BLUE & WHITE SAUCE BOATS.

Description: One by Jones & Sons with "Elizabeth Addressing the Troops", the second with figures, bridge and castle, the third with a band of flowers, impressed mark ERS;
together with a two-handled bowl decorated with cows and a two-handled stand with thatched roof, figures and a church. (5 pieces)
Estimate: \$100.00 - \$150.00



Lot #126: STAFFORDSHIRE BLUE & WHITE TUREEN & COVER.

Description: With foliate molded handles, four feet, with castellated tower by a lakeside; together with a blue and white ladle.

dimensions: 14 inches wide (2 pieces)

Estimate: \$200.00 - \$300.00



Lot #127: SPODE BLUE & WHITE TUREEN & COVER WITH ATTACHED STAND.

Description: In the "Spode's Tower" pattern, of boat form showing views of Rome pointed oval stand; together with a blue and white oval tureen and cover, decorated with figures centered by a fountain and garden.

dimensions: first 8 inches long, second 9 and 1/2 inches long (2 pieces)

Estimate: \$200.00 - \$300.00



Lot #128: PAIR OF ENGLISH BLUE & WHITE STONE CHINA VEGETABLE DISHES AND COVERS.

Description: In the "Berlin Chaplet" pattern, each with an everted scalloped rim, floral clusters, molded shellwork and loop handles and four feet. Chips to rims.

dimensions: 11 inches long

Estimate: \$200.00 - \$300.00



Lot #129: GROUP OF STAFFORDSHIRE BLUE & WHITE TABLE ARTICLES.

Description: Comprising a two- handled sauce tureen, a cover and stand, a matching sauce boat and stand, cracked, pair of two-handled 8 3/4 inch stands in the "Antiquarian" pattern, and a ladle. (6 pieces)

Estimate: \$200.00 - \$300.00



Lot #130: GROUP OF COPELAND BLUE & WHITE TABLEWARES.

Description: In Spode's "Italian" pattern. Including: a pair of 12 1/2 inch chamfered rectangular platters, 14 1/2 inch platter, 11 1/2 inch two handled cake plate, butter dish and cover, 7 inch stand, 7 1/2 inch coffee pot and four other items together with six other blue and white articles.

Estimate: \$200.00 - \$300.00

Lots 131 - 140



Lot #131: GROUP OF BLUE & WHITE TEA WARES.

Description: Including: a Wood and Brettell teapot showing the "Death of Ophelia", another tea pot, Clews Stone China two-handed sugar bowl, another sugar bowl by W. Smith & Co., sugar urn in the Lion pattern, W. Smith & Co., tea cup and saucer, two cylindrical mugs, 6 inch waste pail with figure of a mother and four children in front of a thatched cottage and an individual tea pot.

Estimate: \$200.00 - \$300.00



Lot #132: GROUP OF BLUE & WHITE LOZENGE SHAPED DISHES.

Description: Comprising: a Wood & Brettell (impressed W & B) dish, another dish with honeycomb and pagoda panels, the third with thatched cottage within floral border, two small dishes with figures and a bridge.

dimensions: 5 1/4 inches wide to 11 3/8 inches wide.

Estimate: \$125.00 - \$175.00



Lot #133: TWO FRENCH TOLE PAINTED TRADE SIGNS IN THE FORM OF NAPOLEONIC HATS.

Description: The one now a lampshade, maroon ground with gilt buttoned medallion, the other rose-ground with tiered "ribbon" medallion.

dimensions: lengths 25 1/2 inches and 18 inches

Estimate: \$1000.00 - \$1500.00



Lot #134: A CONTINENTAL GILTWOOD MIRROR.

Description: Five finials above a fluted cresting and an oval and beveled mirror plate (possibly Swedish).

dimensions: 30 inches high x 21 inches wide

Estimate: \$800.00 - \$900.00



Lot #135: A TABERNACLE STYLE PAINTED AND PARCEL-GILT PICTURE FRAME.

Description: Of typical form with painted and gilt decorated decoration. Bearing a label on the reverse

"J.J. Patrickson, 10 Church St., Chelsea, London"

dimensions: 22 1/2 inches high x 18 inches wide
Estimate: \$500.00 - \$600.00



Lot #135A: EMPIRE PAINTED & PARCEL-GILT MIRROR.

Description: The rectangular painted and parcel-gilt frame surrounding a beveled mirror plate.
dimensions: 58 and 1/2 inches high x 39 inches wide
Estimate: \$200.00 - \$300.00



Lot #136: ZEBRA SKIN COVERED LOW TABLE.

Description: The circular top above a cylinder shaped table with tapering underside on three splayed legs ending in hoof feet.
dimensions: 22 inches high x 33 inches wide
Estimate: \$2000.00 - \$3000.00



Lot #137: LARGE LOUIS XV WALNUT ARMOIRE.

Description: Mid Eighteenth Century. The shaped and molded cresting above two doors opening to reveal shelves above a shaped and molded plinth fitted with a drawer raised on short cabriole legs.
dimensions: 101 inches tall x 55 inches wide x 23 inches deep
Estimate: \$2500.00 - \$3500.00



Lot #138: CARVED CONTINENTAL COFFER ON STAND.

Description: The carved hinged top above a body carved with figures, on a stand with molded frieze supported by turned legs.
dimensions: 27 and 1/4 inches high x 42 and 1/2 inches wide x 22 and 1/2 inches deep.
Estimate: \$1800.00 - \$2200.00



Lot #139: SWISS BAROQUE CHAIR.

Description: The solid cresting rail raised on turned supports also supporting an upholstered seat below turned legs joined by a shaped stretcher.
Estimate: \$1400.00 - \$1600.00



Lot #140: PAIR OF ITALIAN PAINTED ARMCHAIRS.

Description: The shaped cresting above a pierced back splat the drop in seat supported by square tapering legs in the front decorated in creamy white and light green paint.
Estimate: \$1400.00 - \$1600.00

Lots 141 - 150



Lot #141: BAROQUE ARMCHAIR (PROBABLY SWISS).

Description: The padded and upholstered back raised on upholstered seat, the whole raised on turned legs joined by an H-shaped stretcher.

Estimate: \$1200.00 - \$1400.00



Lot #142: LOUIS XV SIDE CABINET.

Description: The top above a case with a frieze drawer above a shaped apron raised on short cabriole legs.

approximately: 43 inches high x 54 and 1/2 inches wide x 25 and 1/2 inches deep

Estimate: \$1500.00 - \$2500.00



Lot #143: LATE NINETEENTH CENTURY CONTINENTAL SPINNING WHEEL.

Description: The whole raised on turned legs and joined by a stretcher (appears to be lacking elements).

dimensions: 33 inches high x 32 inches wide

Estimate: \$100.00 - \$125.00



Lot #144: LOUIS XV/XVI TRANSITIONAL FRUITWOOD ARMOIRE.

Description: The shaped cresting above a pair of paneled doors opening to reveal an interior with shelves, the whole raised on bun feet.

dimensions: 79 inches high x 63 inches wide x 21 inches deep

Estimate: \$2500.00 - \$3500.00



Lot #145: CONTINENTAL WALNUT COMMODOE.

Description: The top with molded edge above a case containing three drawers with fluted corner columns, raised on bun feet.

dimensions: 32 inches high x 46 inches wide x 20 and 1/2 inches deep

Estimate: \$1200.00 - \$1400.00



Lot #146: WILLIAM & MARY STYLE SETTEE.

Description: The arched upholstered cresting and out scrolling arms on an upholstered seat with a loose cushion, the whole raised on cabriole legs with wavy stretcher.

dimensions: 40 inches high x 63 inches wide x 30 inches deep

Estimate: \$1000.00 - \$1200.00



Lot #147: DIRECTOIRE FRUITWOOD SEMANIERE.

Description: The molded top with round corners above 7 drawers fitted with brass oval keyhole escutcheons, raised on short cabriole legs.

dimensions: 4 feet 11 1/4 inches high x 24 3/4 inches wide

Estimate: \$800.00 - \$1200.00



Lot #148: LOUIS XVI STYLE PORCELAIN & GILT-METAL MOUNTED VITRINE CABINET.

Description: The onyx top (cracked) above a frieze with two oval porcelain portraits spaced by pomegranate mounts; the case enclosed by a beveled glass door with petal tip and fitted with portrait rondels and musical trophy corner panels, painted cream with floral branches.

dimensions: 4 ft. 5 1/4 in. high x 26 1/2 in. wide

Estimate: \$400.00 - \$600.00



Lot #149: LOUIS XV STYLE GILTWOOD FIRE SCREEN.

Description: A carved cresting joined by C-scroll carved supports surrounding a cloth-covered panel the whole raised on carved feet. Losses and flaking throughout, previous in-painting with gold paint.

dimensions: 48 inches high x 35 inches wide x 17 inches deep

Estimate: \$1400.00 - \$1600.00



Lot #150: LARGE LOUIS XV STYLE EXTENSION DINING TABLE.

Description: The oak triple top with molded edge above a carved and shaped frieze on cabriole legs with hoof feet. Labeled "Richards Saalfeeld Patent Automatentisch".

dimensions: 30 and 1/2 inches high x 59 inches wide (closed) x 47 inches deep. Opens to 163 inches, approximately.

Estimate: \$2200.00 - \$2400.00

Lots 151 - 160



Lot #151: ITALIAN ROCOCO WALNUT SETTEE.

Description: The serpentine padded cresting rail and out scrolled arms above a caned seat with loose cushion, raised on cabriole legs ending in scroll feet
Estimate: \$2500.00 - \$3500.00



Lot #152: NEST OF FOUR CHINESE HARDWOOD TABLES.

Description: Each rectangular molded top above pierced foliate frieze raised on ox bow legs.
dimensions: 30 inches high x 20 1/4 inches wide (largest)
Estimate: \$700.00 - \$900.00



Lot #153: ANGLO INDIAN TEAKWOOD FOUR-POSTER BEDSTEAD.

Description: The posts with spiral reeded sections and applied brass diamond panels, joined by spindle galleries with shaped crestings.
dimensions: height approx. 6 feet 10 inches, width of headboard approx. 5 feet 4 inches
Estimate: \$1200.00 - \$1500.00



Lot #154: FRENCH IRON, BRASS AND MARBLE BAKER'S TABLE.

Description: The marble top supported by a brass and iron base with scrolling supports and turned stretcher.
dimensions: 28 inches high x 60 inches wide x 35 inches deep
Estimate: \$1500.00 - \$1700.00



Lot #155: An item to be sold

Description: PAIR OF COLONIAL ARMCHAIRS. The flat cresting rail and adjustable ladder-back supports with flat arms and turned supports, the whole on square legs with casters with embroidered cushions.
For a similar chair see Christie's sale October 25, 1998 lot #160
Estimate: \$2000.00 - \$3000.00



Lot #156: PAIR OF CHINESE MING STYLE BRASS-MOUNTED HARDWOOD SIDE CABINETS.

Description: Each rectangular top above an open shelf with applied moldings, above a pair of doors fitted with circular lock plate and hinges.
dimensions: 4 feet 3 7/8 inches high x 27 inches wide
Estimate: \$1200.00 - \$1800.00



Lot #157: LARGE GEORGE III CARVED GILTWOOD RECTANGULAR FRAME.

Description: Carved with shell medallions and corners, floral clusters and S-scrolls.
dimensions: approximately 6 feet 8 inches x 9 feet
Estimate: \$2500.00 - \$3500.00



Lot #158: LARGE LOUIS XV STYLE CARVED GILTWOOD RECTANGULAR FRAME.

Description: The outer edges carved with leaf tips centering a raised band carved with shells, strapwork and foliage.
dimensions: approximately 8 feet 9 inches x 7 feet 8 inches
Estimate: \$1500.00 - \$2000.00



Lot #159: SOUTH BAY, HUDSON, NEW YORK.

Description: Oil on paperboard, 7 and 7/8 inches x 13 inches. Note: This work is from the estate of Lillian Reineck of Hudson, New York. It was done by her grandmother Laura Seymour Hasbrouck(1841-1900), who frequently painted with Sanford Robinson Gifford.
Estimate: \$500.00 - \$700.00



Lot #160: "GRAIN ELEVATORS".

Description: Watercolor on paperboard, 9 1/2 inches x 13 3/4 inches (image, sight) signed in the image lower left R. Hurley and signed again on the mat lower right R.N. Hurley and titled lower left.
Estimate: \$400.00 - \$600.00

Lots 161 - 170



Lot #161: MISCELLANEOUS WORKS ON PAPER.

Description: "Luggelaw (County 7010 15 Wicklow). Including a reproduction Fouquet print, four Bartlett reproduction prints of Hudson River views, a cartoon of the "Hudson - Fulton Celebration Oct. 7" from the NY Sunday World & a January 1938 reprint for Fortune Magazine of the "Pied Piper of Toledo".
Estimate: \$75.00 - \$125.00



Lot #162: FIVE MISCELLANEOUS PRINTS.

Description: One color, the others black and white, all framed. The largest 16 3/4 inches x 17 inches. All are signed. Comprising: etching and aquatint of fishermem stamped and signed "Sherwood" 10 1/4 inches x 9 inches, Tropical Village etching, #10/100 "WW Rogers" 3 inches x 3 7/8 inches, Tropical Scenery etching, #10/100 "WW Rogers" 5 7/8 inches x 4 3/8 inches, a scenic lithograph, 7 inches x 9 3/8 inches, a color lithograph of a tugboat, 7 1/2 inches x 8 3/4 inches; the last two signed indistinctly.
Estimate: \$200.00 - \$300.00



Lot #163: TWO PRINTED ILLUSTRATIONS BY G. TOURNON OF CRAFTSMEN.

Description: Each 4 and 7/8 inches x 3 and 1/8 inches (image, sight), matted and framed under glass.
Estimate: \$50.00 - \$75.00



Lot #164: EUROPEAN VILLAGE SCENE WITH FIGURES.

Description: Pastel on paper laid down on paper; 6 7/8 inches x 5 11/16 inches. Initialed lower left "FW" and signed below image lower right "Georges Weber(?)" and inscribed below image lower left "LH (?) St. Germain". In a wooden frame.
Estimate: 5\$0.00 - \$75.00



Lot #165: COASTAL LANDSCAPE.

Description: Watercolor on paperboard with gold leaf beveled edges 4 7/8 inches x 5 13/16 inches (sight), in a gold painted shadow box frame. Canadian gallery label on verso.
Estimate: \$75.00 - \$100.00



Lot #166: THIRTEEN MAPS OF THE CITY OF HUDSON, NEW YORK.

Description: From the "Atlas of Columbia County/New York/From actual survey's and Official Records/Compiled and Published by O.G. Beers & Co./320 Chestnut Street Philadelphia/1873"
Estimate: \$75.00 - \$125.00



Lot #167: SMALL MEXICAN SILVER OVAL PLATTER by Miciel.

Description: With fluted border engraved with birds and flower heads; together with a wood-handled silver-plated silent butler, slotted tomato server by Alvin and seven silver plated articles including a West German oval scalloped 14 3/4 inch tray, well-and-tree platter and four small articles and a silver plated two handled circular tray. Approximately ten pieces.
Estimate: \$50.00 - \$75.00



Lot #168: COLLECTION OF MORTARS & PESTLES.

Description: Comprising: approximately sixteen treen sets, of various woods, together with two miniature wood mortars and wood pestles; a Central American volcanic rock set, an alabaster set, Kashmiri lacquer set with brass liner, three brass sets, one cast with a face of a bearded man, three miniature brass sets and a brass bowl, a cast iron set, aluminum set by Wilton, Portuguese amber glass set and a clear glass pestal, nine various ceramic mortars and four pestles. (Approximately 31 pieces)
Estimate: \$200.00 - \$250.00



Lot #169: FOUR SHERATON STYLE MAHOGANY OPEN ARMCHAIRS.

Description: Each with upholstered back, S-form arms, serpentine seats and reeded legs, variously upholstered.
Estimate: \$200.00 - \$300.00



Lot #170: PAIR OF CZECHOSLOVAKIAN BENTWOOD CHAIRS.

Description: With pressed board seats each with paper label of "Fischel" each with a ballon back, circular seat and splayed legs together with six turned wood display stands. From Vasilow Brother's confectionary, Hudson, New York.
dimensions: height of four stands 23 1/2 inches, height of two stands 17 1/4 inches
Estimate: \$100.00 - \$125.00

Lots 171 - 180



Lot #171: WILLIAM & MARY STYLE TWELVE PIECE SATINWOOD SUITE OF DINING ROOM FURNITURE.

Description: Comprising a dining table with three leaves, eight side chairs and two armchairs and a sideboard.

dimensions of sideboard: 39 inches high x 30 inches long x 29 inches deep, length of dining table fully extended 8 feet 2 inches.

Estimate: \$1000.00 - \$1500.00



Lot #172: VICTORIAN WALNUT CHEST-OF-DRAWERS.

Description: The white marble top above three graduating drawers raised on a shaped and molded plinth.

dimensions: 30 inches high x 47 1/2 inches wide x 20 inches deep

Estimate: \$400.00 - \$600.00

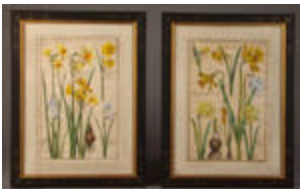


Lot #173: EARLY TWENTIETH CENTURY MAHOGANY SIX PIECE BEDROOM SUITE.

Description: Comprising: a pair of twin beds, each with a solid headboard and footboard with arched crests; two chest-of-drawers and a kneehole desk and stool.

dimensions: of stool 22 1/2 inches high. of kneehole desk 32 inches high x 4 feet long

Estimate: \$500.00 - \$700.00



Lot #174: PAIR OF NARCISSUS PRINTS.

Description: Black and white engravings with hand coloring, each 13 and 1/8 inches x 9 and 5/8 inches (image), matted and framed under glass.

Discolored.

Estimate: \$125.00 - \$175.00



Lot #175: PAIR OF HAND-COLORED BOTANICAL PRINTS.

Description: Each 14 3/4 inches x 10 1/2 inches (image, sight); inscribed in the plate lower left "P.Sluyter/Sculp." in gilt and painted liner in a modern gilded frame.

Estimate: \$125.00 - \$175.00



Lot #176: PAIR OF HAND-COLORED BOTANICAL PRINTS.

Description: Each 15 5/8 inches x 11 3/8 inches (image, sight); inscribed in the plate lower left "P. Sluyter/Sculp." in gilt and painted liner in a modern gilded frame.

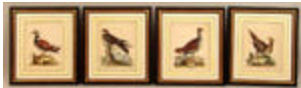
Estimate: \$150.00 - \$200.00



Lot #177: PAIR OF DECORATIVE PAPER PANELS OF BIRDS.

Description: Color prints on paper, laid down on board, each 13 and 1/2 inches x 11 and 1/2 inches (image) in antiqued shadow box frames.

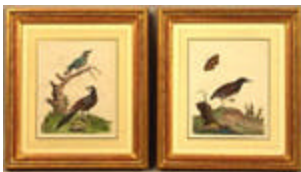
Estimate: \$175.00 - \$225.00



Lot #178: SET OF FOUR BIRD PRINTS AFTER GEORGE EDWARDS.

Description: Hand colored etchings on paper, each approximately 9 and 1/4 inches x 7 and 3/8 inches (plate), matted and framed under glass.

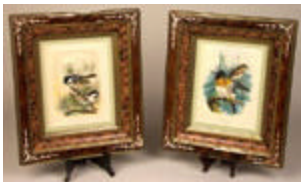
Estimate: \$275.00 - \$375.00



Lot #179: PAIR OF BIRD PRINTS AFTER BROWN.

Description: Hand colored etchings, marked P. Brown in the plate, each 11 and 1/2 inches x 8 and 3/4 inches (page), matted and framed, one glass missing.

Estimate: \$125.00 - \$175.00



Lot #180: PAIR OF FRENCH HAND COLORED LITHOGRAPHIC ORNITHOLOGICAL PRINTS BY P.W.M. TRAP, AFTER J.G. KEULEMANS.

Description: Framed in a pair of incised walnut grained and parcel gilt frames

Estimate: \$40.00 - \$60.00

Lots 181 - 190



Lot #181: BIRD ON A BRANCH.

Description: Watercolor on paper. 5 and 5/8 inches x 7 and 3/8 inches (sight), framed under glass.

Estimate: \$40.00 - \$60.00



Lot #182: "PRIMROSE AND FLOWERING CACTUS".

Description: Watercolors on paper, each 9 and 3/4 inches x 8 and 5/8 inches (sight), framed under glass.

Estimate: \$30.00 - \$50.00



Lot #183: "RESTE DES WARMEN BADES BIN LICODIA AM AETNA".

Description: Sepia ink on paper, framed under glass. 10 and 3/4 inches x 13 and 1/2 inches (sight).

Estimate: \$200.00 - \$300.00



Lot #184: FARM SCENE AND COWS IN A FIELD.

Description: Watercolors on paper, the first 7 and 1/4 inches x 9 and 1/2 inches (sight) the second 7 inches x 9 inches (sight) both framed under glass.

Estimate: \$100.00 - \$200.00



Lot #185: GRAZING SHEEP.

Description: Pastel on paper, 16 inches x 20 inches (sight), in a carved and gilded frame under glass.

Estimate: \$300.00 - \$500.00



Lot #186: LOT OF NINE MISCELLANEOUS WORKS ON PAPER.

Description: Colored prints and watercolors on paper, miscellaneous sizes. The largest 8 and 1/2 inches x 12 and 1/4 inches (image) all framed under glass.

Estimate: \$300.00 - \$400.00



Lot #187: TWO WATERCOLORS CASTLE AND RUINS.

Description: Watercolors on paper, the largest 7 and 1/8 inches x 8 and 1/2 inches (image) both framed under glass.

Estimate: \$50.00 - \$75.00



Lot #188: FRENCH WALLPAPER PANEL.

Description: Color print on paper, 15 inches x 11 inches (sight), framed under glass.

Estimate: \$75.00 - \$125.00



Lot #189: "TWICKENHAM".

Description: Colored engraving after W. Pickett, 10 inches x 14 3/8 inches (image, sight) matted and framed under glass.

Estimate: \$50.00 - \$75.00



Lot #190: TWO VIEWS OF THE THAMES.

Description: Colored prints on paper, each 11 and 1/4 inches x 17 and 7/8 inches (image, sight) framed under glass.

Estimate: \$30.00 - \$50.00

Lots 191 - 200



Lot #191: GROUP OF FIVE BLACK & WHITE ENGRAVINGS.

Description: Depicting Jane, Comtess of Harrington; Edward Southwell: Thomas Maxwell: The Lady Brandon: and a mariner: all framed, the largest 17 inches x 13 and 5/8 inches (including frame).
Estimate: \$200.00 - \$300.00



Lot #192: FOUR PRINTS OF TITLED CHILDREN.

Description: Black and white engravings on paper framed as two pair, the larger, 20 1/4 inches x 14 1/8 inches; all matted and in shadow box frames.
Estimate: \$250.00 - \$300.00



Lot #193: JOHN WILKES, ESQ.

Description: Mezzotint on paper, 12 inches x 10 inches (image, sight) matted and framed under glass.
Estimate: \$20.00 - \$30.00



Lot #194: THREE MEZZOTINTS.

Description: Two depicting people in gardens; one after Van Dyke; all framed under glass.
Estimate: \$125.00 - \$175.00



Lot #195: SIR BALTHAZAR GERBIER AND HIS FAMILY.

Description: Black and white engraving on paper after the portrait by Van Dyck, 15 and 3/4 inches x 22 and 1/4 inches (image) matted and framed under glass.
Estimate: \$75.00 - \$100.00



Lot #196: TWO INTERIORS.

Description: Black and white prints laid down on paper, each 2 and 3/8 inches x 3 and 1/2 inches (sight), framed under glass.

Estimate: \$30.00 - \$50.00



Lot #197: PAIR OF PUTTI PRINTS.

Description: Oval sepia mezzotints, the larger 5 1/4 inches x 4 1/2 inches (image, sight); each signed "F. Bartolozzi Esq. R.A. Inv. Del & Sculp."; in gilded frames under glass.

Estimate: \$80.00 - \$100.00



Lot #198: VENUS CROUCHING.

Description: Engraving on paper, 2 3/8 inches x 1 9/16 inches (image, sight). Inscribed on the mat verso "Altdorfer/VenusCrouching/Original engraving/B.33/W.55". Matted and framed under glass.

Estimate: \$200.00 - \$400.00



Lot #199: FROLICKING NYMPHS.

Description: Woodblock print on paper, 7 7/8 inches x 10 7/8 inches (image sight), signed in the margin lower right "Arthur B. Davies", matted and framed under glass.

Estimate: \$150.00 - \$250.00



Lot #200: TURRET IN MOONLIGHT.

Description: Etching in sepia ink, 11 9/16 inches x 9 7/17 inches (plate, sight); signed in the plate "T. Moran, 1883"; the initials conjoined and signed in pencil in the margin "T. Moran", matted and framed under glass.

Estimate: \$400.00 - \$600.00