

## Lots 201 - 210



**Lot #201:** PAINTED & PARCEL-GILT FIGURE OF CHRIST ON CRUCIFIX.

**Description:** Of typical form inscribed INRI.  
From the Estate of Frederick W. Hughes  
Estimate: \$600.00 - \$800.00



**Lot #202:** LOUIS XVI STYLE GILT-METAL TWO-LIGHT WALL LIGHT.

**Description:** With an urn form finial above a bow knot with a tapering shaft supporting two foliate cast arms and gadrooned nozzles, the shaft below, entwined by floral sprays.  
dimensions: 28 inches high x 15 inches wide  
From the Estate of Frederick W. Hughes  
Estimate: \$200.00 - \$300.00



**Lot #203:** BRONZE AND ORMOLU-MOUNTED HOT WATER URN.

**Description:** Of typical urn form with Egyptian motif ring handles above a hot water spigot, ending in a square molded base on circular feet.  
dimensions: 18 1/2 inches high x 11 inches wide  
From the Estate of Frederick W. Hughes  
Estimate: \$300.00 - \$400.00



**Lot #204:** CONTINENTAL ETCHED GLASS AND LEAD-MOUNTED MIRROR.

**Description:** The arched mirror plate etched with chinoiserie designs mounted in a lead border. dimensions: 25 inches high x 15 inches wide  
From the Estate of Frederick W. Hughes  
Estimate: \$100.00 - \$150.00



**Lot #205:** ITALIAN ROCOCO GILTWOOD MIRROR.

**Description:** The foliate carved cresting above roccoco foliate carving surrounding an oval frame with carved C-scrolls centering a mirror plate dimensions: 17 inches high x 11 inches wide  
From the Estate of Frederick W. Hughes  
Estimate: \$200.00 - \$400.00



**Lot #206:** AMERICAN MAHOGANY PIER MIRROR.

**Description:** The broken pediment cresting hung with acorns over a frame with fluted and ring turned columns flanking a veneered border framing a mirror plate. dimensions: 55 inches high x 32 1/2 inches wide  
From the Estate of Frederick W. Hughes  
Estimate: \$800.00 - \$1200.00



**Lot #207: AMERICAN MAHOGANY SHELF CLOCK.**

**Description:** By Williams, Orton & Preston & Co. The carved central cresting centered by a pair of columns centering a mahogany crossbanded door with mirror plate and panel fitted with print of George Washington. Movement replaced.

dimensions: 32 inches high x 16 1/2 inches wide x 4 3/4 inches deep

From the Estate of Frederick W. Hughes

Estimate: \$150.00 - \$200.00



**Lot #208: LARGE AMERICAN BRASS MANTEL CLOCK.**

**Description:** By the Chelsea Clock Co. Boston, MA., Retailed by Tiffany & Co. The silvered dial surrounded by a circular brass case raised on a pedestal ending in scroll feet.

dimensions: 13 inches high x 14 inches wide x 7 inches deep

From the Estate of Frederick W. Hughes

Estimate: \$400.00 - \$600.00



**Lot #209: "GRECIAN MOSAIC SHELF CLOCK".**

**Description:** By Ingrahm. The tin painted dial with Roman numerals surrounded by brass bezel set in a conforming case raised on plinth with two rondels. With one key and pendulum bob.

dimensions: 14 inches high x 10 1/2 inches wide x 4 1/2 inches deep

From the Estate of Frederick W. Hughes

Estimate: \$200.00 - \$300.00



**Lot #210: PAINTED WOOD MODEL OF NOAH'S ARK**

**Description:** With painted wooden figures. The barn of typical barn form painted blue and white with red and black painted roof with various animals and figures. Approximately 33 pieces

dimensions: 8 1/2 inches high x 14 1/2 inches wide x 6 inches deep

From the Estate of Frederick W. Hughes

Estimate: \$300.00 - \$500.00

## Lots 211 - 220



**Lot #211:** AMERICAN PAINTED FALL-FRONT DESK.

**Description:** The hinged and lidded top opening to reveal an open well and pigeon hole dividers above a pair of doors flanked by columns ending in bun feet. dimensions: 38 1/2 inches high x 37 inches wide x 22 1/2 inches deep

From the Estate of Frederick W. Hughes

Estimate: \$600.00 - \$800.00



**Lot #212:** PLASTER FIGURE OF VENUS.

**Description:** Depicting "Venus after the Bath", plaster and painted greenish gray. Attributed to Humpfrey Hopper.

64 inches tall

From the Estate of Frederick W. Hughes

Estimate: \$1000.00 - \$1500.00



**Lot #213:** PAIR OF THREE LIGHT CANDELABRA.

**Description:** Of cut glass, ormolu, and marble. Possibly Swedish. A crescent moon finial supported by a brass shaft raised on a cut glass and marble support. The out scrolled body fitted with pendant drops. The whole supporting three candle arms with nozzles. (elements lacking and repaired)

dimensions: 28 1/2 inches high x 9 inches wide

From the Estate of Frederick W. Hughes

Estimate: \$700.00 - \$900.00



**Lot #214:** AMERICAN "ADIRONACKS" CARVED PICTURE FRAME.

**Description:** The border carved with a natural branch and leaf motif surrounding a scoop molded frame with incised and gilded corners with an ebonized and gilded liner.

dimensions: 33 inches high x 38 1/2 inches wide x 3 1/2 inches deep

From the Estate of Frederick W. Hughes

Estimate: \$200.00 - \$300.00



**Lot #215: AMERICAN FEDERAL FIRE FENDER.**

**Description:** Of serpentine form with four turned brass finials and steel grate raised on turned brass feet.

dimensions: 23 inches high x 29 inches wide x 13 inches deep

From the Estate of Frederick W. Hughes

Estimate: \$1000.00 - \$1500.00



**Lot #216: PAIR OF AMERICAN PAINTED SIDE CHAIRS.**

**Description:** With rush seats, each with two horizontal back splats and shaped stiles continuing to turned legs joined by stretchers.

From the Estate of Frederick W. Hughes

Estimate: \$100.00 - \$200.00



**Lot #217: FEDERAL FAUX PAINTED CANDLESTAND.**

**Description:** The rectangular shaped top above a finely turned urn-form standard on inverted spider legs ending in brass ball feet.

dimensions: 26 1/4 inches high x 19 inches wide x 13 1/4 inches deep.

From the Estate of Frederick W. Hughes

Estimate: \$500.00 - \$700.00



**Lot #218: REGENCY MAHOGANY TRIPOD TABLE.**

**Description:** The rectangular top above an urn-turned standard with tripod arched spider legs.

dimensions: 27 inches high x 38 inches wide x 23 inches deep

From the Estate of Frederick W. Hughes

Estimate: \$300.00 - \$500.00



**Lot #219: AMERICAN CLASSICAL BAROMETER.**

**Description:** Of typical form fitted with a thermometer and barometer, inscribed on paper barometer dial L.A. Smith.

dimensions: 38 inches high x 10 inches wide

From the Estate of Frederick W. Hughes

Estimate: \$700.00 - \$900.00



**Lot #220:** ASSEMBLED PAIR OF AMERICAN SIDE CHAIRS.

**Description:** Of tiger and birdseye maple, the shaped cresting rail above a vase-shaped figured back splat over a caned seat ending in saber legs.  
From the Estate of Frederick W. Hughes  
Estimate: \$400.00 - \$600.00

## Lots 221 - 230



**Lot #221:** AMERICAN CLASSICAL MAHOGANY DROP-LEAF TABLE.

**Description** The rectangular top with 2 drop leaves on a square standard raised on four scroll feet.  
dimensions: 29 1/2 inches high x 42 inches wide  
From the Estate of Frederick W. Hughes  
Estimate: \$200.00 - \$300.00



**Lot #222:** GILTWOOD PIER MIRROR, POSSIBLY AMERICAN.

**Description** A broken pediment with acorns below a panel with case foliate ornaments centered by a shell, flanked by turned, fluted and carved supports and conforming apron.  
dimensions: 55 inches high x 32 1/2 inches wide  
From the Estate of Frederick W. Hughes  
Estimate: \$1500.00 - \$2000.00



**Lot #223:** AMERICAN CLASSICAL MAHOGANY BOOKCASE.

**Description** The shaped and molded cresting above a pair of glazed doors flanked by S-scroll supports, on a conforming plinth ending in shaped square feet  
dimensions: 63 inches high x 52 inches wide x 17 inches deep  
From the Estate of Frederick W. Hughes  
Estimate: \$700.00 - \$900.00



**Lot #224:** PALISANDER EBONY AND GILT DOOR SURROUND.

**Description** The gilt molded cresting above a veneered panel flanked by a pair of gilt capitals and flat veneered columns ending in gilt plinths.  
dimensions: 118 inches high x 79 inches wide  
From the Estate of Frederick W. Hughes  
Estimate: \$1500.00 - \$2500.00



**Lot #225:** PAIR OF LOUIS XVI STYLE GREY PAINTED SIDE CHAIRS.

**Description** Each with a carved cresting rail and carved lyre-form back rest, the upholstered seat on turned and fluted legs ending in turned feet.  
From the Estate of Frederick W. Hughes  
Estimate: \$300.00 - \$500.00



**Lot #226:** BAMBOO AND LACQUER SIDE TABLE.

**Description** The inset lacquer top surrounded by bamboo border the whole raised on bamboo legs joined by a stretcher ending in out splayed bamboo feet.  
dimensions: 28 inches high x 30 inches wide x 21 1/2 inches deep  
From the Estate of Frederick W. Hughes  
Estimate: \$200.00 - \$300.00



**Lot #227:** VICTORIAN OAK "GOTHIC" METAMORPHIC SIDE CHAIR.

**Description** The arched "Gothic" cresting rail above a pierced "Gothic" back splat above a plank seat and hinged mechanism opening to reveal library steps raised on oak legs.  
From the Estate of Frederick W. Hughes  
Estimate: \$200.00 - \$400.00



**Lot #228:** ENGLISH DRAW-LEAF TABLE.

**Description** The elm top overhanging a plain frieze with two leaves supported by a plain molded frieze, supported by square tapering legs.  
dimensions: 30 inches high x 30 inches wide 115 inches long fully extended  
From the Estate of Frederick W. Hughes  
Estimate: \$1200.00 - \$1400.00





**Lot #229: CARLO BUGATTI CORNER CHAIR.**

**Description** Ebonized wood parchment and hammered copper.

The curved back rail inlaid in pewter with a typical geometric pattern above two parchment covered roundels painted with female figures, pendent from cord, inset with pierced hammered copper roundels, the upholstered parchment seat above a conformingly inlaid apron raised on copper wrapped turned legs. (distressed)

From the Estate of Frederick W. Hughes

Estimate: \$4000.00 - \$6000.00



**Lot #230: LACQUER TRAY BY JEAN DUNAND.**

**Description** The rectangular tray with a dished top and eggshell border and rich red color. Signed on the reverse Jean Dunand.

dimensions: 8 1/4 inch wide x 6 1/2 inch deep

From the Estate of Frederick W. Hughes

Estimate: \$2000.00 - \$3000.00

## Lots 231 - 240



**Lot #232:** THREE GLASS HURRICANE SHADES.

**Description:** Two clear with brass rings and one frosted with enamel floral band.

dimensions: 9 1/4 inches to 11 1/4 inches high

Estimate: \$100.00 - \$150.00



**Lot #234:** FEDERAL GILTWOOD CARVED PIER MIRROR.

**Description:** The upright plate surmounted by a diamond lattice panel; with ball applied sides and cornice.

dimensions: 4 feet 2 1/2 inches x 30 1/2 inches

Estimate: \$3000.00 - \$5000.00



**Lot #236:** AMERICAN SCALE.

**Description:** In red paint with gold highlights with a brass hopper marked "Perfection Scale Co. New Canaan, CT. No. 3".

dimensions: 13 inches high x 18 inches wide

Estimate: \$100.00 - \$150.00



**Lot #238:** AMERICAN SCHOOL HALF LENGTH PORTRAIT OF A GENTLEMAN AND A HALF LENGTH PORTRAIT OF A LADY WITH BROOCH AND GOLD PENDANT WITH PENCIL.

**Description:** Oil on Canvas; Framed in Mahogany veneered frames

dimensions: 30 inches x 25 inches

Estimate: \$3500.00 - \$4500.00



**Lot #240:** SMALL NEOCLASSICAL GILTWOOD MIRROR.

**Description:** The broken crest above a verre eglomise tablet and a mirror. Paint distressed on tablet. Chips.

dimensions: 25 inches high x 15 and 1/2 inches wide  
Estimate: \$200.00 - \$300.00

# Lots 241 - 250



**Lot #241:** BLACK TOLE CHINOISERIE DECORATED TRAY.

**Description:** The rectangular tray with rounded corners and decorated with Chinese figures, buildings and dragon.

dimensions: 27 inches wide x 21 inches deep

Estimate: \$300.00 - \$500.00



**Lot #242:** THREE BROWN SHOE-FORM SNUFF BOXES.

**Description:** Of typical-form, height of tallest 3 inches.

Estimate: \$100.00 - \$200.00



**Lot #243:** SMALL GILTWOOD CONVEX MIRROR.

**Description:** The dish frame and ebonized inner border surrounding a convex plate.

dimensions: 11 1/2 inches wide

Estimate: \$200.00 - \$300.00

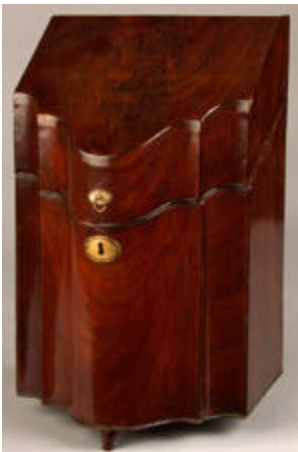


**Lot #244:** GEORGE III MAHOGANY TEA CADDY.

**Description:** The lidded top opening to reveal three sections. The whole raised on bracket feet.

dimensions: 6 inches high x 9 inches wide x 5 inches deep

Estimate: \$200.00 - \$400.00



**Lot #245:** PAIR OF SIMILAR GEORGE III MAHOGANY KNIFE BOXES.

**Description:** Each veneered in mahogany and opening to reveal a fitted sections

dimensions: height of tallest 14 1/2 inches

Estimate: \$350.00 - \$450.00

**Lot #246:** REGENCY PARTRIDGE WOOD TEA CADDY



**Lot #246: REGENCY PARTRIDGE WOOD TEA CADDY.**

**Description:** Together with a mahogany and cross banded box. The teacaddy of rectangular form with gilt metal carrying handles and raised on ball feet. The box of rectangular form; opens to reveal a lift out section raised on bun feet.

dimensions: largest: 13 inches wide x 10 inches deep x 7 inches high

Estimate: \$300.00 - \$500.00



**Lot #247: GROUP OF THREE BOXES.**

**Description:** Includes a chinese red lacquer box, chinese export box and a rosewood brass and mother-of-pearl inlaid box.

dimensions: 12 inches deep x 8 inches wide x 10 inches high (largest)

Estimate: \$200.00 - \$350.00



**Lot #248: PHOEBE THE CUP BEARER.**

**Description:** Oil on canvas, relined; 18 1/2 inches x 15 15/16 inches; in a gilded liner.

Estimate: \$200.00 - \$300.00



**Lot #249: AMERICAN HOOKED CARPET.**

**Description:** Worked with oval floral medallion on oatmeal ground within grape border with floral clusters and scroll work.

dimensions: approx. 9 feet 3 1/2 inches x 11 feet 3 inches

Estimate: \$1200.00 - \$1400.00



**Lot #250: HOOKED CARPET.**

**Description:** The oval ivory field with floral stalks within cafe au lait surround.

dimensions: approx. 7 feet 11 1/2 inches x 9 feet 11 1/2 inches

Estimate: \$1000.00 - \$1500.00

# Lots 251 - 260



**Lot #251:** AMERICAN RED GREEN AND CREAM COVERLET.

**Description:** Centered by a floral leaf medallion on a basket weave pattern ground with floral border, fringed edge.

dimensions: approximately 7 feet x 6 feet 4 inches

Estimate: \$150.00 - \$250.00



**Lot #252:** AMERICAN COVERLET.

**Description:** Dark blue ground worked with tiles incorporating latched ivory medallions and iron red checker medallions, fringed edge.

dimensions: 6 feet x 6 feet 10 inches approximately.

Estimate: \$200.00 - \$300.00



**Lot #253:** AMERICAN GREEN, RED AND BLUE COVERLET.

**Description:** With three color stripes, floral central medallion and oak leaves, fringed border.

dimensions: approximately 6 feet 8 inches x 7 feet 6 inches

Estimate: \$150.00 - \$200.00



**Lot #254:** AMERICAN FLAT WEAVE RUNNER.

**Description:** With horizontal stripes in cafe au lait on a black ground overlaid with ivory circles.

dimensions: approximately 44 inches x 83 inches

Estimate: \$80.00 - \$120.00



**Lot #255:** AMERICAN MARBLE-TOP CAST IRON TABLE.

**Description:** The base incised Wood & Co. Philadelphia. The rectangular top on a stand cast with fruit and foliage, with conforming stretcher.

dimensions: 31 inches high x 30 inches long

Estimate: \$400.00 - \$600.00



**Lot #256:** SET OF THREE BLACK LACQUER CHINESE EXPORT NESTING TABLES.

**Description:** The rectangular tops decorated with Chinese decoration raised on turned supports and ending in shaped feet. One table missing, originally a set of four.

dimensions: 28 inches high x 19 inches wide x 12 inches deep

Estimate: \$300.00 - \$500.00



**Lot #257:** PAIR OF OAK CARVED WALL BRACKETS.

**Description:** The central body surmounted by sprigs with foliage.

dimensions: 10 inches wide

Estimate: \$200.00 - \$300.00



**Lot #258:** MAHOGANY "GONDOLA" SIDE CHAIR.

**Description:** Of typical form lacking slip seat.

Estimate: \$100.00 - \$200.00



**Lot #259:** TWO ROCKING CHAIRS.

**Description:** Comprising one bentwood with cane back and seat and one with serpentine crest above a cane back (lacking seat)

Estimate: \$75.00 - \$100.00



**Lot #260:** AMERICAN CLASSICAL MAHOGANY GAMES TABLE.

**Description:** The rectangular hinged and swivel top above cushion molded frieze above rope-twist edge; acanthus-carved pedestal, shaped base and claw feet.

dimensions: 29 3/4 inches H x 36 inches L

Estimate: \$300.00 - \$500.00

# Lots 261 - 270



**Lot #261:** AMERICAN CLASSICAL MAHOGANY DRESSER.

**Description:** The oval mirror plate with floral-carved cresting and double scroll supports above two small drawers; the lower section containing four long drawers, raised on bracket feet.

dimensions: 6ft 6 inches H x 42 inches W

Estimate: \$300.00 - \$500.00



**Lot #262:** AMERICAN EMPIRE CARD TABLE.

**Description:** The flip top above a molded frieze supported by a banjo shaped standard raised on four scroll feet.

dimensions: 28 and 1/2 inches high x 39 and 1/2 inches

wide x 19 inches deep

Estimate: \$400.00 - \$600.00



**Lot #263:** AMERICAN FEDERAL MAHOGANY TWO-PART DROP-LEAF DINING TABLE.

**Description:** Each table with rounded corners and a drop-leaf, above a plain frieze on reeded and turned legs and feet, possibly Philadelphia.

dimensions: 29 inches high x 48 inches wide x 86 inches long open

Estimate: \$2000.00 - \$3000.00



**Lot #264:** AMERICAN CHERRY CHEST OF DRAWERS.

**Description:** The molded top above five graduated drawers raised on bracket feet. 45 inches high x 38 inches wide x 18 inches deep

Estimate: \$800.00 - \$1200.00



**Lot #265:** SET OF FOUR WINDSOR CHAIRS.

**Description:** The shaped cresting above a spindle back and a plank seat supported by bamboo turned legs.

Estimate: \$1000.00 - \$1500.00





**Lot #266: AMERICAN RENAISSANCE WALNUT WORK TABLE.**

**Description:** The molded top above a foliate-incised frieze drawer, raised on tapered legs formed by pierced stretchers cantering on wood finial; together with a Victorian Walnut Side Chair with spiral twist uprights and black ground floral needlework (2 pieces) dimensions of work table: 29" h x 28" w x 20" d  
Estimate: \$250.00 - \$350.00



**Lot #267: "WALLACE NUTTING" EARLY AMERICAN STYLE STAINED WOOD LADDER BACK SIDE CHAIR WITH RUSH SEAT.**

**Description:** With break arch splats; ring turned uprights and turned legs. The back rail incised in script "Wallace Nutting"  
Estimate: \$300.00 - \$400.00



**Lot #268: PAIR OF EARLY AMERICAN STYLE TIGER MAPLE LADDERBACK ARMCHAIRS.**

**Description:** The open back, with turned finials and cotton web seats.  
Estimate: \$250.00 - \$350.00



**Lot #269: SET OF FOUR SHAKER STYLE TIGER MAPLE CHAIRS.**

**Description:** Comprising two armchairs and two side chairs, each with three ladder-back splats on turned stiles and legs with woven taped seats.  
Estimate: \$500.00 - \$700.00



**Lot #270: FEDERAL STYLE CREAM-GROUND PAINTED WOOD MIRROR.**

**Description:** With 1/2 round pilasters and black corner squares.  
dimensions: 16 inches x 14 inches  
Estimate: \$75.00 - \$125.00

# Lots 271 - 280



**Lot #271:** AMERICAN COUNTRY GREEN PAINTED CABINET.

**Description:** The rectangular flat top above open shelves flanked by fielded panels, raised on a plinth. dimensions: 7 feet 6 3/4 inches high x 4 feet 8 1/2 inches wide

Estimate: \$700.00 - \$900.00



**Lot #272:** AN AMERICAN TIGER MAPLE DOOR.

**Description:** Made up of four highly figured and wonderfully colored panels, removed from "Needles" workshop, Baltimore, Maryland.

dimensions: 100 inches high x 34 inches wide

Estimate: \$500.00 - \$700.00



**Lot #273:** AMERICAN MAHOGANIZED CHEST OF DRAWERS.

**Description:** The thumb molded top above a case fitted with five drawers. The whole raised on shaped bracket feet.

dimensions: 36 inches high x 37 1/2 inches wide x 19 inches deep

Estimate: \$400.00 - \$600.00



**Lot #274:** FEDERAL CARVED PAINTED WOOD DOOR FRAME.

**Description:** The rectangular opening surmounted by a lunette window with fan-shaped panes, arched molded surround.

dimensions: approx. 9 feet 1/2 inch high x 38 inches wide

Estimate: \$300.00 - \$500.00



**Lot #275:** PAIR AMERICAN PRESSED CLEAR GLASS DOLPHIN-FORM CANDLESTICKS.

**Description:** With flower cup nozzles and stepped bases.

dimensions: 9 3/4 inches high

Estimate: \$100.00 - \$150.00



**Lot #276:** ELI TERRY MAHOGANY, PILLAR AND SCROLL CLOCK.

**Description:** With paper label, "Patent Clocks Invented by Eli Terry, made and sold at Plymouth, Conn..."; The white-painted wood dial enclosed by a double pane door, the lower pane painted with a white-columned building centering the pendulum aperture; flanked by free-standing columns, raised on bracket feet.

dimensions: 29 inches high x 17 1/4 inches wide

Estimate: \$1200.00 - \$1800.00



**Lot #277:** TWO SMALL TABLE CLOCKS.

**Description:** One Chelsea with silvered steel dial and drum case, the second French with enamel dial, fluted pilasters and flower basket decoration.

dimensions: 7 and 1/4 inches high, 8 and 3/4 inches high

Estimate: \$100.00 - \$200.00



**Lot #278:** SETH THOMAS ROSEWOOD GRAINED 30-HOUR SHELF CLOCK.

**Description:** With label, "Brass clocks made and sold by Seth Thomas, Plymouth Hollow, Conn."; the double-pane door with floral roundel on black ground, flanked by 1/2 round faux marble pilasters, shaped base.

dimensions: 25 1/4 inches high x 15 inches wide

Estimate: \$100.00 - \$200.00



**Lot #279:** AMERICAN EASTLAKE INCISED WALNUT SHELF CLOCK.

**Description:** The applied paper chapter ring with brass movement, the case with architectural crests enclosed by a glass door, raised on a plinth.

dimensions: 22 3/4 inches high x 15 inches long

Estimate: \$100.00 - \$200.00



**Lot #280: AMERICAN INCISED OAK CALENDAR  
SHELF CLOCK.**

**Description:** With patent October 9, 1894. The white enamel dial above a month-of-the year dial enclosed by a glass door beneath a shaped crest; the base with day-of-the week aperture.

dimensions: 22 inches high x 13 inches wide

Estimate: \$300.00 - \$500.00

## Lots 281 - 290



**Lot #281:** AMERICAN CLASSICAL ROSEWOOD VENEERED AND PARCEL GILT 8-DAY SHELF CLOCK WITH EGLOMISE PANELS.

**Description:** The double-pane door with floral panel on an ivory ground, flanked by 1/2-round pilasters; the pendulum door also with floral spray flanked by socles.

dimensions: 32 1/4 inches high x 16 3/4 inches wide  
Estimate: \$200.00 - \$300.00



**Lot #282:** SETH THOMAS THIRTY-DAY OAK WALL CLOCK.

**Description:** The white enamel dial within molded frame.

dimensions: 22 inches deep  
Estimate: \$200.00 - \$300.00



**Lot #283:** AMERICAN AESTHETIC MOVEMENT INCISED OAK SHELF CLOCK.

**Description:** The paper-applied dial enclosed by an arched door beneath a spindle-applied cresting, bracket feet.

dimensions: 20 1/2 inches high x 14 1/4 inches high.  
Estimate: \$100.00 - \$200.00



**Lot #284:** FEDERAL BRASS-MOUNTED MAHOGANY BANJO CLOCK WITH EGLOMISE PANELS.

**Description:** Simon Willard's patent. The white enamel dial within a drum case with brass finial above flared trunk with glass panel decorated with acorns and oak leaves on an ivory ground, flanked by C-scroll brackets, the rectangular pendulum door with gilt cherub heads, ivory, black and pale blue borders.

dimensions: length 34 1/2 inches  
Estimate: \$1800.00 - \$2200.00



**Lot #285: MENS GUBELIN WRIST WATCH**

**Description:** -

Estimate: \$1000.00 - \$1300.00



**Lot #286: LARGE GROUP OF MENS WRISTWATCHES**

**Description:** -

Estimate: \$100.00 - \$200.00



**Lot #287: MENS MIDO CHRONOMETER WRIST WATCH.**

**Description:** Gold case and band.

Estimate: \$800.00 - \$1200.00



**Lot #288: TIFFANY & CO. DESK ALARM CLOCK.**

**Description:** Together with a Gubelin desk clock. dimensions: of Tiffany & Co. clock 4 inches high

Estimate: \$100.00 - \$150.00



**Lot #289: MENS ROLEX WRISTWATCH.**

**Description:** 26 jewels, presidential, day and date, oyster perpetual, RF#1803.

Estimate: \$3500.00 - \$4500.00



**Lot #290: MISCELLANEOUS "VIDE POCHE" ARTICLES.**

**Description:** Comprising: three New Haven pedometers; Hoffritz. Swiss army knife and another Swiss army knife, 2 other pocket knives, a Hubeo eleven-part travel tool kit, six miniature wood duck decoys and two hardstone roosters.

Estimate: \$100.00 - \$125.00

# Lots 291 - 300



**Lot #291:** PAIR OF CANTON BLUE AND WHITE SAUCE BOATS AND QUATREFOIL STANDS.

**Description:** -  
dimensions: 7 1/2 inches long  
Estimate: \$100.00 - \$200.00



**Lot #292:** PAIR OF CHINESE BLUE AND WHITE PORCELAIN PILGRIM BOTTLES.

**Description:** Each of disc form with scaly dragon decoration on cracked ice ground with foo dog handles.  
dimensions: 10 1/8 inches high  
Estimate: \$200.00 - \$300.00



**Lot #293:** CHINESE EXPORT PORCELAIN ARMORIAL TEAPOT.

**Description:** Of oval section with double twist handle, upraised spout, painted. Arms of Arbutnot, now with silver-plated lid; together with a Chinese blue and white barrel-form teapot with foo dog knob.  
dimensions: 5 inches high and 5 1/4 inches high  
Estimate: \$150.00 - \$200.00



**Lot #294:** CHINESE EXPORT PORCELAIN TWO-HANDLED CUP.

**Description:** With double twist handles and a mantled shield; together with a pair of Chinese blue and white 6 1/2 inch dishes with scalloped rims.  
dimensions: of cup 3 1/2 inches high  
Estimate: \$100.00 - \$150.00



**Lot #295:** TWO CHINESE BLUE AND WHITE TWO HANDED CIRCULAR TUREENS AND COVERS.

**Description:** One in the Willow pattern with boar's head handles and a pierced crown form knob, the second with chrysanthemum decoration, shell-form handles and mushroom knob.  
dimensions of each 9 3/4 inches  
Estimate: \$300.00 - \$500.00



**Lot #296:** TWO PAIRS OF CHINESE BLUE AND WHITE PLATES.

**Description:** Comprising: a pair of 8 1/2 inch octagonal plates with bamboo, rock and chrysanthemums and a pair of 9 inch lotus plates.  
Estimate: \$200.00 - \$300.00





**Lot #297:** TWO CHINESE BLUE AND WHITE CHAMFERED RECTANGULAR SMALL PLATTERS.

**Description:** The first with flower-filled basket and prunus branch and water lily, the second with water lilies and other aquatic plants.

dimensions: 11 1/2 inches wide and 11 1/4 inches wide.

Estimate: \$300.00 - \$400.00



**Lot #298:** CANTON BLUE & WHITE RETICULATED OVAL BOWL & STAND.

**Description:** With everted rim; together with a Staffordshire blue and white two handled reticulated basket, with bridge scene and an associated stand. dimensions: of stands 9 3/4 inches and 9 1/4 inches (4 pieces)

Estimate: \$150.00 - \$250.00



**Lot #299:** CHINESE EXPORT PORCELAIN "FAMILLE ROSE" PUNCH BOWL.

**Description:** The exterior with pierced foliate garlands and clusters.

dimensions: 11 and 1/4 inches wide

Estimate: \$275.00 - \$375.00



**Lot #300:** CHINESE BLUE & WHITE PORCELAIN THREE-PIECE GARNITURE.

**Description:** Comprising: a pair of high shouldered angular baluster-form vases and covers and a central baluster-form vase.

dimensions: 8 1/2 inches high and 9 1/2 inches high

Estimate: \$400.00 - \$600.00