

# Lots 301 - 310



**Lot #301:** GROUP OF FIVE CANTON BLUE AND WHITE TABLE ARTICLES.

**Description:** Comprising: a heart-shaped 6 3/4 inch dish, two fan shaped dishes and two triangular dishes, variously with chrysanthemum and lake side scenes.  
Estimate: \$100.00 - \$200.00



**Lot #302:** DUTCH DELFT BLUE AND WHITE PLATE.

**Description:** With central rondel within floral sprays, extensively restored.  
dimensions: depth 13 5/8 inches  
Estimate: \$75.00 - \$125.00



**Lot #303:** FIVE VARIOUS CHINESE EXPORT PORCELAIN TEAWARES.

**Description:** Including: a waste bowl and a large saucer painted in flower sprigs in blue and three teabowls.  
dimensions of largest 6 inches.  
Estimate: \$100.00 - \$200.00



**Lot #304:** TWO CHINESE EXPORT COFFEE CUPS & TWO SAUCERS.

**Description:** All painted with flower sprays and sprigs painted in pinks, purples and iron red.  
Estimate: \$100.00 - \$150.00



**Lot #305:** PAIR OF ENGLISH JASPERWARE SPILL VASES.

**Description:** Of ringed beaker form, relief molded with floral vines and stars.  
dimensions: 4 and 1/4 inches high  
Estimate: \$200.00 - \$300.00



**Lot #306:** COALBROOKDALE FLOWER-ENCRUSTED PORCELAIN BASKET.

**Description:** With underglazed monogram CD in script, of angular scalloped outline with arched interlaced handle, painted with floral clusters.  
dimensions: 10 1/4 inches wide  
Estimate: \$400.00 - \$600.00



**Lot #307: PAIR OF OPAQUE CHINA BLUE & WHITE DISHES.**

**Description:** In the "British Flowers" pattern, each of shell-form, with tulip stem molded handles together with a Davenport circular dish with Chinese figures and ruin, impressed Davenport above an anchor. (3 pieces)

dimensions: each 10 1/2 inches

Estimate: \$200.00 - \$300.00



**Lot #308: GROUP OF ENGLISH PORCELAIN TEAWARES.**

**Description:** With underglazed iron red pattern pattern no. 288, comprising: An 8 inch serving dish, 3 tea bowls and saucers decorated with iron red thistles and gilt foliage; together with a pair of English porcelain stands with iron red five petal flowers, green corn flowers and green foliage. (9 pieces)

Estimate: \$80.00 - \$120.00



**Lot #309: MISCELLANEOUS GROUP OF ENGLISH PORCELAIN TEA ARTICLES.**

**Description:** Including: an individual teapot with iron red and gold carnation stems, and a spiral fluted pear-form coffee pot ensuite; a tea cup and matching saucer, three cylindrical cups one with gilt monogram; a two-handled cup and stand with gilt decoration; a scalloped bowl with gilt decoration; a pair of saucers with gilt decoration; two other saucers; two graduated jugs; and a transfer decorated 7 1/4 inch waste pail; together with a German porcelain figural-decorated stand with the AR monogram.

Estimate: \$300.00 - \$400.00



**Lot #310: TWO ENGLISH SPHERICAL TEAPOTS.**

**Description:** With floral decoration; together with an octagonal teapot stand, two Famille Rose 8 1/3 inch oval dishes and four export porcelain stands.

Estimate: \$300.00 - \$400.00

# Lots 311 - 320



**Lot #311:** PAIR OF ENGLISH PORCELAIN SAUCE TUREEN COVERS & STANDS.

**Description:** With angular "pearl" handles, turquoise and gilt loop bands.

Estimate: \$80.00 - \$120.00



**Lot #312:** TWO ENGLISH SMEAR-GLAZED STONEWARE JUGS.

**Description:** Comprising: a Charles Meigh white smear-glazed stoneware jug molded in relief with scenes of Bacchic revelry; and a Staffordshire blue-grey tinted smear-glazed stoneware jug molded in relief with scenes of Paul and Virginia, the first jug with applied pad with impressed manufacturers and diamond registry mark for 1844.

Estimate: \$125.00 - \$175.00



**Lot #313:** LIVERPOOL PORCELAIN SLOP BOWL AND A WORCESTER SAUCER.

**Description:** The slop bowl painted on the exterior with a rose spray and other flower sprigs, the interior with a flower sprig and narrow iron-red border; the saucer printed in black with "L'Amour" after Robert Hancock.

Estimate: \$120.00 - \$180.00



**Lot #314:** LOWESTOFT "REDGRAVE" PATTERN TEA BOWL & SAUCER.

**Description:** The bowl and saucer decorated in blue and red with birds amongst a floral landscape. dimensions: of bowl 1 1/2 inches, of saucer 4 1/2 inches, of bowl 3 inches.

Estimate: \$200.00 - \$300.00



**Lot #315:** WORCESTER WASTE BOWL AND A CHRISTIANS LIVERPOOL BLUE AND WHITE WASTE BOWL.

**Description:** The Worcester waste bowl painted in the 'Mansfield' pattern: the Christians Liverpool waste bowl painted in the 'Peony and Dots' pattern and with a bird perched upon a sprig.

Estimate: 300.00 - 400.00



**Lot #316:** TWO PAIRS OF GREEN-GLAZED POTTERY LEAF-FORM PLATES.

**Description:** Of overlapping grape leaves, together with a pair of oval 7 3/4 inch plates impressed Schranveri, and an 11 inch Wedgwood green glazed leaf dish. (7 pieces)

Estimate: \$100.00 - \$150.00



**Lot #317:** PAIR OF CHELSEA PORCELAIN STYLE FIGURES.

**Description:** Of a shepherdess and a youth, together with four Sitzendorf miniature figures of 18th Century children

dimensions: 3 1/2 inches high to 11 1/2 inches high (6 pieces)

Estimate: \$250.00 - \$350.00



**Lot #318:** LEEDSWARE TWO-HANDLED TUREEN.

**Description:** With reticulated cover.

dimensions: 11 and 1/4 inches

Estimate: \$100.00 - \$150.00



**Lot #319:** PAIR OF LEEDSWARE SAUCE BOATS AND STANDS.

**Description:** Together with a transfer decorated platter.

Estimate: \$80.00 - \$100.00



**Lot #320:** GROUP OF ENGLISH POTTERY ARTICLES.

**Description:** Comprising: a pair of creamware 9 inch grisaille-decorated botanical plates, a creamware 9 1/2 inch two-handled reticulated basket, a blue and white decorated creamware sauce boat with impressed mark BL over 16 and a Parianware gadroon-decorated teapot with blue edges.

Estimate: \$150.00 - \$200.00

# Lots 321 - 330



**Lot #321:** PAIR OF SALTGLAZE OVAL BASKETS.  
**Description:** With naturalistic basket-weave sides and loop handles.  
dimensions: 9 3/4 inches wide  
Estimate: \$300.00 - \$400.00



**Lot #322:** GROUP OF SIX SALTGLAZE PITCHERS.  
**Description:** Comprising: two Minton graduated cream jugs with satyr head spouts, a floral molded jug and cover impressed DON, and three tan-glazed jugs with faux bois handles.  
dimensions: from 5 to 9 inches high  
Estimate: \$500.00 - \$700.00



**Lot #323:** RIDGWAY SALTGLAZE STONEWARE INK STAND.  
**Description:** Impressed Ridgway Son & Co. beneath an anchor, with berry and leaf border, two urn-form wells and a chamber taper stick.  
dimensions: 12 3/4 inches wide  
Estimate: \$150.00 - \$200.00



**Lot #324:** TWO WEDGWOOD ARTICLES.  
**Description:** Comprising: a caneware beehive-form covered honey pot with attached stand and a creamware "basket-weave" teapot and cover with wheat sheath knob, each impressed Wedgwood.  
dimensions: of honey pot 3 and 3/4 inches high  
Estimate: \$100.00 - \$200.00



**Lot #325:** WEDGWOOD CANEWARE GAME TUREEN AND COVER.  
**Description:** Impressed Wedgwood, of oval shape relief molded with grape vines, the cover, associated, with cauliflower knob; together with another English pottery game tureen and cover relief molded with pheasant trophies.  
Estimate: \$400.00 - \$600.00



**Lot #326:** STAFFORDSHIRE SALTGLAZE GAME TUREEN, COVER AND STAND.  
**Description:** The basket-weave bowl with flower heads, the cover molded with a bird trophy and ferns.  
dimensions: 11 inches wide  
Estimate: \$300.00 - \$400.00



**Lot #327:** WEDGWOOD CREAMWARE LARGE BARRELL-FORM PITCHER.

**Description:** With blue stripes and bracket spout. dimensions: 11 1/2 inches high  
Estimate: \$80.00 - \$120.00



**Lot #328:** GROUP OF CERAMIC TABLEWARES.

**Description:** Comprising: two English ivory-glazed jelly molds, mocha-glazed cylindrical jar and cover and two dot-decorated jugs.  
Estimate: \$75.00 - \$100.00



**Lot #329:** ENGLISH STONEWARE CHEESE DOME AND PLATE.

**Description:** Impressed patent "Mosaic" above the number 800, the cover with faux bamboo handle and blue and white checker bands, the footed stand with conforming decoration; together with an English ivory-glazed fern-decorated cheese dish and cover.  
Estimate: \$100.00 - \$200.00



**Lot #330:** GROUP OF SEVEN DRESDEN PORCELAIN TABLE ARTICLES.

**Description:** Comprising: a 7 1/2 inch lighthouse-form coffee pot, 5 1/4 inch baluster-form creamer, 6 inch balloon-shaped dish, 5 inch waste pail, two 7 inch dishes, 11 inch two-handled cake plate, all with floral sprays and gilt highlights.  
Estimate: \$150.00 - \$200.00

# Lots 331 - 340



**Lot #331:** PAIR OF PARIS PORCELAIN URNS.

**Description:** Each of angular campani form, with pink floral garlands, green and gold scroll work; together with a Paris porcelain sepia-decorated helmet-form cream jug with a boy and dog; and a Paris porcelain pear-form milk pitcher with floral reserves and peach border.

dimensions: of pair 8 inches high (4 pieces)

Estimate: \$300.00 - \$400.00



**Lot #332:** SITZENDORF FIGURE OF A CELLIST

**Description:** -

dimensions: 5 and 1/2 inches high

Estimate: \$100.00 - \$200.00



**Lot #333:** BELGIAN IVORY-GROUND POTTERY THREE-PIECE WASH SET.

**Description:** Marked Manufacture Imperiale et Royale Comprising: 11 1/4 inch cylindrical pitcher and a 16 inch basin and a beaker; each decorated with storks.

Estimate: \$40.00 - \$60.00



**Lot #334:** CLAY JARDINIERE

**Description:** In the Neoclassical style.

dimensions: 7 and 1/2 inches high x 6 and 3/4 inches wide

Estimate: \$40.00 - \$60.00



**Lot #335:** PORTUGUESE IVORY-GLAZED POTTERY, TWO-HANDLED CYLINDRIAL BASKET.

**Description:** Made for Casa Fina

dimensions: 13 inches wide

Estimate: \$75.00 - \$100.00



**Lot #336:** ENAMEL-DECORATED BLACK GROUND POTTERY VASE.

**Description:** With floral stalks and green leafage.  
dimensions: 6 1/8 inches high and 4 inches high  
Estimate: \$70.00 - \$90.00

**Lots 337-350 are being sold to benefit Meals on Wheels**



**Lot #337:** AMERICAN SILVER 5 PIECE TEA AND COFFEE SERVICE.

**Description:** International Silver Co., Meriden, CT. Comprising two pots, creamer and covered sugar bowl and a waste pail, of scalloped hexagonal outline, with oval bases.

Dimensions: Height of coffee pot 8 1/2 inches (approximately 76 ounces)

Estimate: \$1000.00 - \$1500.00



**Lot #338:** GROUP OF SILVER-PLATED TABLE ARTICLES.

**Description:** Comprising a 20 inch oval platter with beaded outer edge, a 14 1/2 inch piecrust tray with three bun feet (L.B.S & Co.); a Reed & Barton 9 3/4 inch fruit bowl, with petal tip and scroll border; 4 serpentine coasters with gadroon rim, impressed sunburst mark; an asparagus basket; and a covered jar with glass liner and orchid handle (9 pieces).

Estimate: \$200.00 - \$300.00



**Lot #339:** SET OF EIGHT AMERICAN SILVER "GEORGE WASHINGTON REPRODUCTION" PEPPERETTES.

**Description:** Black, Starr & Gorham. Of flared block form, with twist-on caps.

dimensions: 1 1/2 inches, approximately 10 ounces.

Estimate: \$120.00 - \$180.00



**Lot #340:** AMERICAN SILVER RECTANGULAR ENTREE DISH.

**Description:** With gadroon and beaded edge.  
dimensions: 11 inch length, approximately 26 ounces  
Estimate: \$150.00 - \$250.00



# Lots 341 - 350

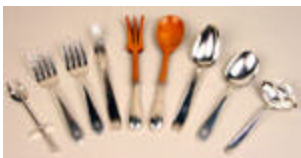


**Lot #341:** TWO AMERICAN SILVER CAKE PLATES.

**Description:** The first by International, in the "Prelude" pattern with flowerhead and c-scroll border, the second footed with pierced border and wreath-engraved center.

dimensions: diameter of each 10 1/2 inches, approximately 20 ounces total weight.

Estimate: \$120.00 - \$180.00



**Lot #342:** TWO AMERICAN SILVER SERVING FORKS AND TWO MATCHING SPOONS.

**Description:** Gorham Mfg. Co. in the "Old Colony" pattern. Monogrammed; together with a pair of American silver-handled wood salad servers, monogrammed "H"; two piece French silver-plated fruit set; French silver-plated ladle; and a silver plated two-prong fork with pusher (nine pieces).

dimensions: approximately 8 ounces total weight

Estimate: \$100.00 - \$150.00



**Lot #343:** PAIR OF ENGLISH SHEFFIELD PLATE RECTANGULAR ENTREE DISHES AND COVERS.

**Description:** Each with round corners and gadroon edge, the flattened dome covers with removable loop handles and inscribed "1" and "2".

dimensions: 11 1/2 inches long

Estimate: \$450.00 - \$650.00



**Lot #344:** ENGLISH SILVER PLATED TWO-HANDLED TRAY.

**Description:** "Elkington & Co., 1897". The gadroon rim centered by acanthus medallions and with leaf-capped loop handles; raised on a stand with faux bamboo members and chain supports.

dimensions: height of stand 21 3/4 inches, length over handles 30 inches.

Estimate: \$450.00 - \$650.00



**Lot #345:** FRENCH ART DECO SILVER PLATTER.

**Description:** Of chamfered rectangular outline, with serpentine corners.

dimensions: 17 3/4 inches long, approximately 42 oz.

Estimate: \$600.00 - \$800.00



**Lot #346:** AUSTRIAN SILVER FISH PLATTER.

**Description:** Of angular scalloped outline with inset corners, the border cast with ribbon-bound husk band, monogrammed.

dimensions: length 26 3/4 inches, approximately 58 ounces.

Estimate: \$450.00 - \$650.00



**Lot #347:** AUSTRIAN SILVER SAUCE BOAT WITH ATTACHED STAND, AND A LADLE.

**Description:** Of oval scalloped outline with molded edge and C-scroll handle, the ladle with flared handle and script monogram. (2 pieces)

dimensions: length 10 1/2 inches , approximately 29 ounces.

Estimate: \$400.00 - \$600.00



**Lot #348:** AUSTRIAN SILVER RETICULATED CAKE BASKET.

**Description:** Makers Mark V.M.S. The dipped sides with bead-and-reel edge above pierced scrollwork sides, arched handle.

dimensions: 12 3/4 inch length, approximately 30 ounces

Estimate: \$600.00 - \$800.00



**Lot #349:** TWO AUSTRIAN SILVER RIMMED CUT GLASS GRADUATED BOWLS.

**Description:** Each circular, the one with the honeycomb surface enclosing octagons; the other with wave and trifoil motif.

dimensions: diameters 8 1/2 inches and 9 1/2 inches

Estimate: \$120.00 - \$180.00



**Lot #350:** GROUP OF AUSTRIAN SILVER FLATWARE ARTICLES.

**Description:** Comprising eight table spoons, a pastry server with shovel-form holder; a pair of pastry tongs; a fish knife engraved with fish and a fish fork with flared handles, script monogram (twelve pieces)

dimensions: approximately 36 ounces total weight.

Estimate: \$300.00 - \$500.00

# Lots 351 - 360



**Lot #351:** SPANISH SILVER VASE IN THE ARTS & CRAFTS STYLE.

**Description:** Of flattened ovoid form repoussé and chased with bees, honeycombs and floral stems. dimensions: 12 1/2 inches high (approx. 68 ounces) Estimate: \$200.00 - \$400.00



**Lot #352:** PAIR OF ENGLISH SILVER PLATED CANDLESTICKS.

**Description:** With removable two light arm sections. With trumpet stems, s-form arms, urn nozzles and removable drip pans. height 15 3/8 inches Estimate: \$250.00 - \$350.00



**Lot #353:** GROUP OF FOUR ENGLISH SILVER OR SILVER-MOUNTED TABLE ARTICLES.

**Description:** Comprising: a 4 1/2 inch oblong quatrefoil box with tortoise shell panel and four scroll feet, 3 1/2 inch oval tea caddy with urn-form knob, a Victorian silver-lidded glass inkwell with hinged mushroom lid, inkwell with sloping sides and ribbon-bound meated borders. Estimate: \$400.00 - \$600.00



**Lot #354:** TWO PAIRS OF ENGLISH SILVER TRUMPET FORM BUD VASES.

**Description:** One maker R & B Birmingham 1905, the second W.I. Birmingham 1907, the larger with gadrooned everted rim, each weighted. dimensions: 7 3/4 inches high and 5 3/4 inches high Estimate: \$300.00 - \$400.00



**Lot #355:** GROUP OF SIX AMERICAN SILVER SMALL TABLE ARTICLES.

**Description:** Comprising: three miniature candlesticks by Ensko, in the Queen Anne style with baluster stems and octagonal bases; a pair of octagonal urn-form pepperettes by J.E. Caldwell & Co.; and a circular ring box by Alvin with pierced gallery and velvet lining. Dimensions: Height 3 1/4 inches to 4 3/4 inches. Estimate: \$250.00 - \$350.00



**Lot #356:** PAIR OF AMERICAN SILVER-PLATED OPEN VEGETABLE DISHES.

**Description:** By Gorham Mfg. Co., Of oval scalloped outline together with a silver plated 7 inch shell-form dish, a silver plated coaster with pierced sides and a brass 21 1/4 inch tray. (5 pieces)

Estimate: \$80.00 - \$120.00



**Lot #357:** AMERICAN ART NOUVEAU SILVER TWO-HANDLED CENTERPIECE HOLDER.

**Description:** By Gorham "Athenic", 1900-1910. Pierced and chased with daisies, on four scroll feet. Approximately 19 ounces. Width over handles 12 3/4 inches.

Estimate: \$700.00 - \$900.00



**Lot #358:** TWO PAIR OF AMERICAN SILVER-PLATED MATCH BOX HOLDERS.

**Description:** By Tiffany & Co., N.Y. Each with scalloped flower head edge centering the holder engraved with armorial, together with a Tiffany & Co. silver-plated 7 inch square salver with engraved surface. 5 pieces.

Estimate: \$200.00 - \$300.00



**Lot #359:** AMERICAN SILVER MUSTARD POT.

**Description:** By Tiffany & Co., N.Y. 1902-1907. The hinged lid with mineral knob above an engraved armorial, on four scrolled feet. height 3 1/4 inches. Approximately five ounces.

Estimate: \$125.00 - \$175.00



**Lot #360:** EIGHT AMERICAN SILVER FLATWARE PIECES.

**Description:** Tiffany & Co., 7016 18 N.Y. in the "Chrysanthemum" pattern comprising: 4 dinner forks and 4 matching table spoons (8 pieces)

Estimate: \$700.00 - \$900.00

# Lots 361 - 370



**Lot #361:** AMERICAN SILVER PLATE.

**Description:** By Tiffany & Co., N.Y. 1907-1938, in the "Chrysanthemum" pattern. With reeded edge and engraved armorial, surface abraded. Approximately 20 ounces. diameter 10 inches  
Estimate: \$400.00 - \$600.00



**Lot #361A:** AMERICAN TWO-HANDLED SILVER TRAY.

**Description:** By Tiffany & Co., New York, 1907-1938; in the "Chrysanthemum" pattern with engraved armorial; 15 3/16 inches x 11 1/4 inches x 2 3/16 inches  
Estimate: \$2000.00 - \$3000.00



**Lot #362:** PAIR OF GILT GESSO AND WOOD WALL BRACKETS.

**Description:** Each in the form of feathers supporting a serpentine shelf.  
dimensions: 10 and 1/2 inches high x 9 inches wide  
Estimate: \$75.00 - \$100.00



**Lot #363:** PAIR OF LOUIS XVI STYLE CARVED GILTWOOD WALL APPLIQUES.

**Description:** Each in the form of a ribbon-bound flower-filled basket incorporating a musical trophy.  
dimensions: 4 feet 7 inches long.  
Estimate: \$600.00 - \$800.00



**Lot #364:** PAIR OF SILVERED METAL PRICKET CANDLESTICKS.

**Description:** Each foliate bobèche supported by a hammered metal body supported by scroll feet ending in ball feet.  
dimensions: 30 inches high  
Estimate: \$900.00 - \$1000.00



**Lot #365:** WALNUT SINGLE DRAWER SIDE TABLE.

**Description:** The dished top above a frieze with one drawer and a shaped skirt, supported by four square tapering legs.

dimensions: 26 1/2 inches x 27 inches x 21 inches

Estimate: \$800.00 - \$900.00



**Lot #366:** A SPANISH CHESTNUT SIDE CABINET.

**Description:** A shaped cresting above two shelves a drawer, another shelf and another drawer.

dimensions: 73 inches high x 20 1/2 inches wide x 13 1/2 inches deep.

Estimate: \$700.00 - \$900.00



**Lot #367:** CHINOISERIE MAROON LACQUER TRAY ON BLACK LACQUER STAND.

**Description:** Of oblong scallop outline decorated in gold with rock work and chrystanemum brackets, the stand on cabriole legs.

dimensions: 6 and 1/2 inches high x 38 and 1/2 inches long

Estimate: \$500.00 - \$700.00



**Lot #368:** AMERICAN AESTHETIC MOVEMENT MAHOGANY ARMCHAIR.

**Description:** The mahogany cresting rail above a padded back and seat with out swept arms raised on a fluted frieze and turned legs.

Estimate: \$125.00 - \$175.00



**Lot #369:** ITALIAN SIDE CHAIR

**Description:** - Walnut, swag carved front rail on turned legs with carved back rail.

dimension: 38 inches x 18 1/2 inches x 17 inches

Estimate: \$800.00 - \$900.00



**Lot #370:** PAIR OF VICTORIAN MAHOGANY & EBONIZED CIRCULAR FOOT STOOLS.

**Description:** With needlepoint seats each with veneered sides and three bun feet.  
dimensions: width 10 and 3/4 inches  
Estimate: \$300.00 - \$400.00

# Lots 371 - 380



**Lot #371:** VICTORIAN GRAINED TOLE SPICE BOX.  
**Description:** With dome hinged top, opening to a removable tray with spice canisters.  
dimensions: 11 inches high x 19 inches wide  
Estimate: \$200.00 - \$300.00



**Lot #372:** CARVED OAK COFFER ON STAND.  
**Description:** The hinged top above a carved frieze, below three carved panels. The whole raised on carved bracket feet.  
dimensions: 33 inches high x 57 inches wide x 23 inches deep  
Estimate: \$3000.00 - \$3500.00



**Lot #373:** VICTORIAN STYLE NEEDLEWORK OTTOMAN.  
**Description:** With floral roundels above fringe worked skirt.  
dimensions: length 22 inches  
Estimate: \$200.00 - \$300.00



**Lot #374:** AN ENGLISH OAK COFFER.  
**Description:** The flat hinged top above a four-panelled front with fluted supports.  
dimensions: 22 inches high x 47 inches wide x 20 1/2 inches deep  
From the Estate of Bert Barkas, Claverack, New York  
Estimate: \$600.00 - \$800.00



**Lot #375:** TWO CARVED WOOD ARTICLES.  
**Description:** Comprising a half round oak cherub head and Spanish Colonial figure of the Virgin, traces of gilt decoration.  
dimensions: 4 1/2 inches high and 8 3/4 inches high  
Estimate: \$125.00 - \$175.



**Lot #376:** TWO VICTORIAN PAPIER-MACHE SMALL TRAYS ON FAUX BAMBOO STANDS.  
**Description:** One painted with figures in a church yard within a floral border and black ground, the second (formerly a fire screen) with a harbor scene inlaid with mother-of-pearl.  
Estimate: \$500.00 - \$600.00





**Lot #377: COLONIAL ROSEWOOD OVAL CENTER TABLE.**

**Description:** The solid oval top supported by a barley twist turned and carved pedestal terminating in four foliate carved legs and ending in scroll feet. Hinges replaced, re-finished, losses and scratches at feet. dimensions: 28 inches high x 54 inches wide x 40 inches deep

Estimate: \$3000.00 - \$4000.00



**Lot #378: AUSTRIAN PAINTED ARMOIRE.**

**Description:** The shaped and molded crested above a carcass with two doors opening to a plain interior, the whole raised on turned bun feet, decorated in geometric patterns in green, brown, and red. dimensions: 62 inches high x 60 inches wide x 28 inches deep

Estimate: \$1800.00 - \$2200.00



**Lot #379: LOUIS XV/XVI TRANSITIONAL STYLE GILT SIDE TABLE.**

**Description:** The oval top fitted with a fabric panel on conforming frieze raised on foliate and bead carved legs joined by an oval caned stretcher ending in hoof feet.

dimensions: 30 inches high x 24 inches wide x 18 inches deep

Estimate: \$700.00 - \$900.00



**Lot #380: CONTINENTAL ROCOCO SIDE TABLE.**

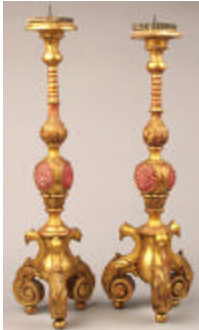
**Description:** The later top with a molded edge raised on a shaped and molded frieze with a drawer supported by cabriole legs. dimensions: 27 and 1/2 inches high x 33 inches wide x 20 inches deep

Estimate: \$1800.00 - \$2200.00

# Lots 381 - 390



**Lot #381:** ENGLISH MAHOGANY TABLE BOOKSHELF.  
**Description:** Incorporating: four rectangular tiers raised on spindle supports with brass acorn finials and shaped feet.  
dimensions: 25 1/2 inches long  
Estimate: \$200.00 - \$300.00



**Lot #382:** PAIR OF CONTINENTAL CARVED WOOD PRICKET STICKS.  
**Description:** The metal bobeche above a carved and turned stem, supported by scrolling feet.  
Estimate: \$1000.00 - \$1200.00



**Lot #383:** BAROQUE OAK SIDE TABLE.  
**Description:** The plank top above a frieze fitted with a drawer supported by turned legs and joined by a stretcher.  
dimensions: 27 inches high x 38 and 1/2 inches wide x 23 and 1/2 inches deep  
Estimate: \$700.00 - \$900.00



**Lot #384:** GEORGE III BUTLER'S TRAY.  
**Description:** With hinged rounded corners and pierced carrying handles.  
Estimate: \$150.00 - \$200.00



**Lot #385:** ITALIAN ROCOCO CARVED & PAINTED BERGERE.  
**Description:** The tub back and shaped arms with nailed leather upholstery; the serpentine molded rails raised on cabriole legs ending in scroll feet.  
Estimate: \$600.00 - \$800.00



**Lot #386:** FOUR BAROQUE CHAIRS.  
**Description:** All four with ladder-backs and all on turned legs (variations)  
Estimate: \$700.00 - \$900.00



**Lot #387: SWISS BAKER'S TABLE.**

**Description:** The flat hinged top opening to a well, on X-form legs joined by a molded stretcher with iron carrying handles.

dimensions: 32 inches high x 57 inches wide x 24 inches deep

Estimate: \$2500.00 - \$3000.00



**Lot #388: ITALIAN SIDE CHAIR.**

**Description:** A shaped cresting above a solid covered back splat the upholstered seat raised on four fluted square tapering legs.

Estimate: \$600.00 - \$800.00



**Lot #389: LOUIS XV WALNUT CENTER TABLE.**

**Description:** The circular molded top with a thumb molded edge, raised on a base with shaped frieze with cabriole legs and hoof feet. Minor scratches.

dimensions: 30 inches high x 62 and 1/2 inches wide

Estimate: \$1500.00 - \$1700.00



**Lot #390: CONTINENTAL BAROQUE PAINTED PINEWOOD LECTERN.**

**Description:** The slant bookrest with faux marble panel on trestle supports.

dimensions: 11 inches high x 14 inches long

Estimate: \$100.00 - \$200.00

# Lots 391 - 400



**Lot #391:** LOUIS XV STYLE FIRESCREEN.

**Description:** The shaped wooden surround framing a tapestry panel, on foliate carved scroll feet.  
dimensions: 39 inches tall x 24 and 1/2 inches wide  
Estimate: \$300.00 - \$500.00



**Lot #392:** BLACK-GROUND TOLE PEINTE COAL SCUTTLE.

**Description:** Painted with a crown above a hinged coal holder flanked by lions head ring drop handles, on bracket feet.  
dimensions: 18 inches high x 11 1/4 inches wide  
Estimate: \$200.00 - \$300.00



**Lot #393:** LOUIS XV/XVI STYLE DRESSING TABLE.

**Description:** The rectangular top with rounded corners and three hinged panels opening to a mirror; inlaid with floral sprays and raised on shaped pierced trestle supports joined by a stretcher.  
dimensions: height 27 inches x width 39 inches x depth 16 inches  
Estimate: \$800.00 - \$1200.00



**Lot #394:** DIRECTOIRE STYLE SLATE-TOP STEEL & BRASS GUERIDON.

**Description:** The circular top raised on C-scroll legs joined by a brass ring and ending in hoof feet.  
dimensions: 24 inches high x 27 3/4 inches deep  
Estimate: \$200.00 - \$400.00



**Lot #395:** PAIR OF GEORGIAN STYLE MAHOGANY ARMCHAIRS.

**Description:** After a design by Sir Edward Luytens, with pierced oval back, shaped arms and serpentine-fronted drop-in seat on tapered legs joined by an X-stretcher.  
Estimate: \$800.00 - \$1200.00



**Lot #396:** SET OF FOUR GEORGIAN STYLE OAK OPEN ARMCHAIRS.

**Description:** In the "Little Thankeham" pattern after a design by Sir Edward Luytens. Each with four serpentine splats, rush seat and turned legs.

Estimate: \$700.00 - \$900.00



**Lot #397:** GEORGIAN STYLE ROSEWOOD ARMCHAIR.

**Description:** After a design by Sir Edward Luytens, with pierced oval back, shaped arms, serpentine-fronted drop-in seat on tapered legs joined by an X-stretcher.

Estimate: \$400.00 - \$600.00



**Lot #398:** GEORGE III INLAID SATINWOOD OCCASIONAL TABLE.

**Description:** The rectangular top with narrow crossbanding above a shallow frieze inlaid at the corners with oval fan medallions, raised on square tapered legs.

dimensions: 28 1/2 inches high x 27 inches long

Estimate: \$1000.00 - \$2000.00



**Lot #399:** GEORGE III INLAID MAHOGANY PEDESTAL.

**Description:** The rectangular cross-banded top above a flute-inlaid frieze, a deep drawer and a cupboard door, raised on a plinth.

dimensions: 42 inches high x 20 inches wide

Estimate: \$700.00 - \$900.00



**Lot #400:** QUEEN ANNE STYLE OAK DROP-LEAF TABLE.

**Description:** The top with bowed ends and two D-shape leaves, raised on cabriole legs ending in pad feet.

dimensions: 28 1/2 inches high x 37 inches long

Estimate: \$200.00 - \$400.00