

Lots 401 - 410



Lot #401: PAIR OF VICTORIAN SIDE CHAIRS.

Description: The Rococo carved cresting rail above a shaped and padded back rest supported on an upholstered seat raised on turned legs, the whole joined by a barley twist stretcher.

Estimate: \$600.00 - \$800.00



Lot #402: AMERICAN RENAISSANCE INCISED AND INLAID WALNUT PEDESTAL.

Description: The molded top with incised bell flower band above an inlaid frieze, a cupboard door, a base drawer and bracket feet.

dimensions: 33 inches H x 16 1/2 inches W x 18 1/4 inches D

Estimate: \$200.00 - \$400.00



Lot #403: AESTHETIC MOVEMENT EBONIZED CENTER TABLE.

Description: The circular top with tooled leather panels above four shallow frieze drawers with pierced brass pulls spaced by pierced fretwork panels, raised on four fluted supports joined by an X-stretcher on scroll legs.

dimensions: 29 inches high x 41 1/2 inches deep

Estimate: \$1500.00 - \$2500.00 Reserve: \$1000.00



Lot #404: AMERICAN RENAISSANCE REVIVAL WALNUT HALL TREE.

Description: The upper part with arched mirror plate flanked by six turned wood hooks beneath a pedimented foliate-carved cresting; the lower section with bracket surface flanked by open holders above a breakfront base with marble panel and drawer, together with a carved walnut hanging towel rack with needlepoint and beadwork panel.

Hall Tree dimensions: 7ft 4inches x 36 3/4 inches

Towel Rack dimensions: 14inches x 23 1/2 inches

Estimate: \$300.00 - \$500.00



**Lot #405: VICTORIAN BLACK GROUND PAPIER
MACHE SEWING TABLE.**

Description: The oblong scalloped hinged top above a tapered spool holder and tripod legs.
dimensions: 28 3/4 inches H x 20 inches L
Estimate: \$300.00 - \$500.00



**Lot #406: AN AMERICAN RENAISSANCE REVIVAL
MIRROR & CONSOLE.**

Description: The broken cresting above a veneered panel above a large central mirror plate flanked by columns. Raised on turned legs supporting a marble top on a plinth base.
dimensions: 98 inches high x 28 inches wide x 11 inches deep
From the Estate of Bert Barkas, Claverack, New York
Estimate: \$1000.00 - \$1500.00 ~~Reserve: \$675.00~~



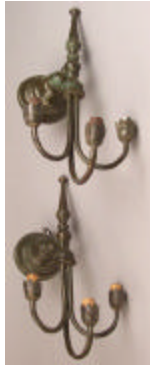
**Lot #407: AMERICAN COPPER SIX-LIGHT
CHANDELIER.**

Description: The onion shaped stem with two graduated tiers of candlearms, the upper tier with crescent supported pendants and drops. Possibly Tiffany & Co.
dimensions: 41 inches high x 26 inches wide
Estimate: \$400.00 - \$600.00



**Lot #408: AMERICAN ARTS & CRAFTS BRASS SIX-
LIGHT GASOLIER.**

Description: The pierced ring with outset arms and cast with flower heads with domed and spire upper section cast with flower heads and vine work.
dimensions: 43 1/2 inches high x 34 1/2 inches wide
Estimate: \$1200.00 - \$1800.00 ~~Reserve: \$800.00~~



Lot #409: PAIR AMERICAN ARTS AND CRAFTS PATINATED BRONZE AND TIN THREE LIGHT WALL APPLIQUES.

Description: Each circular back plate supporting the C-scroll pendant arms.

dimensions: 14 1/2 inches wide

Estimate: \$100.00 - \$150.00



Lot #410: PAIR OF GEORGIAN STYLE BRASS 2-LIGHT WALL APPLIQUES

Description: -

dimensions: 8 inches high

Estimate: \$20.00 - \$30.00

Lots 411 - 420



Lot #411: CARVED MARBLE TRESTLE BENCH.

Description: The rectangular seat on shaped supports relief carved with rose garlands centering a monogram.

dimensions: length 36 1/2 inches

Estimate: \$400.00 - \$600.00



Lot #412: PAIR OF CARVED MARBLE TRESTLE BENCHES.

Description: Each rectangular seat on shaped supports; relief carved with rose garlands enclosing a monogram.

dimensions: 4 ft. long x 18 inches high

Estimate: \$1000.00 - \$1500.00 Reserve: \$675.00



Lot #413: TWO AMERICAN VINTAGE PAINTED WICKER ARMCHAIRS.

Description: One with shallow wings.

Estimate: \$200.00 - \$300.00



Lot #414: AMERICAN VINTAGE BROWN-STAINED WICKER LOVE SEAT

Description: The tubular top rail continuing around into the armrests; the matted seat on flared legs; together with a brown-stained armchair, a white painted fan-back side chair and a 44 1/2 inch wicker love seat. (4 pieces)

Estimate: \$1500.00 - \$2000.00 Reserve: \$1200.00



Lot #415: GOTHIC REVIVAL WHITE-PAINTED ALUMINUM BENCH.

Description: With wings, pierced with quatrefoils, honeycomb lattice seat.

dimensions: 4ft 7 inches Length

Estimate: \$1200.00 - \$1800.00 Reserve: \$1000.00



Lot #416: CHINESE GARDEN SEAT.

Description: Of typical barrel-form decorated with foliage.

dimensions: 18 and 1/2 inches high x 13 inches wide

Estimate: \$500.00 - \$600.00



Lot #417: PAIR OF SEATED CHINESE FIGURES.

Description: The pair of seated, carved Chinese figures dressed in typical costume and wearing a necklace of beads. Raised on bracket ebonized plinths.
dimensions: 34 inches high
Estimate: \$800.00 - \$1200.00



Lot #418: CONTEMPORARY BROWN GLAZED CERAMIC SINK BASIN WITH LEAF BANDS.

Description: -
dimensions: 18 1/2 inches
Estimate: \$100.00 - \$150.00



Lot #419: CONTEMPORARY WHITE MARBLE CIRCULAR SINK BASIN.

Description: With everted rim.
dimensions: 19 1/2 inches diameter
Estimate: \$150.00 - \$200.00



Lot #420: SEVRES BISQUE PORCELAIN FIGURAL JARDINERE.

Description: In form of two Chinamen supporting a basket on rockwork base impressed with interlaced L's enclosing the number 11, with ebonized stand.
dimensions: 9 1/2 inches high x 13 1/2 inches wide
Estimate: \$250.00 - \$350.00

Lots 421 - 430



Lot #421: JAPANESE IMARI FISH BOWL.

Description: Of bell form, painted with rockwork, bamboo, cherry blossoms and pines, the interior painted with fish, hardwood stand.
dimensions: 9 1/4 inches high x 15 1/2 inches wide
Estimate: \$250.00 - \$350.00



Lot #422: JAPANESE BRONZE JARDINIERE.

Description: Relief applied with birds perched on blossoming branches.
dimensions: 11 1/4 inches high x 14 1/2 inches wide
Estimate: \$300.00 - \$500.00



Lot #423: PAIR OF JAPANESE WOOD HIBACHIS.

Description: With floral lacquer decoration. Of typical cylindrical form.
dimensions: 8 1/4 inches high x 13 1/2 inches wide
Estimate: \$300.00 - \$500.00



Lot #424: DRIP-GLAZED POTTERY VASE.

Description: Probably Japanese, of swelling triangular form, relief- molded with a crab and rope bands.
dimensions: 8 3/4 inches high
Estimate: \$100.00 - \$150.00



Lot #425: TEN ANTIQUE JAPANESE PHOTOGRAPHS.

Description: Colored photographs depicting Japanese life showing trades people, professions and scenery. All images are matted to approximately 7 inches x 9 inches (two images are vertical). All ten matted and framed as a set in carved oak frames with batwing motif.
Estimate: \$800.00 - \$1200.00



Lot #426: CONTINENTAL SPINNING WHEEL.

Description: Of typical form.
Estimate: \$50.00 - \$75.00



Lot #427: SMALL ARTS AND CRAFTS CRACKLE GLAZE PORCELAIN VASE.

Description: Impressed "1069".

4 1/2 inches tall

Estimate: \$30.00 - \$50.00



Lot #428: GROUP OF APPROXIMATELY 20 BOLTS OF FABRIC

Description: -

Estimate: \$200.00 - \$300.00



Lot #429: FORMICA TABLE.

Description: 38 inch circular top, skirted, with glass top.

Estimate: \$150.00 - \$200.00



Lot #430: PAIR OF SILKWORK PICTURES (SHEPARDESS & PARROT).

Description: Silk and paint on fabric; each oval approx. 10 3/8 inches x 8 1/4 inches (sight), in gold painted mats, framed under glass.

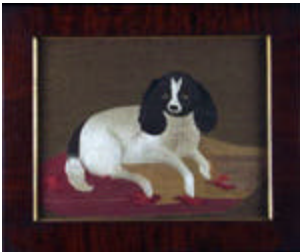
Estimate: \$200.00 - \$400.00

Lots 431 - 440



Lot #431: "COTTAGE ON THE WATER".

Description: Silkwork and ink on fabric, 5 1/2 inches x 7 3/4 inches (image), framed under glass.
Estimate: \$150.00 - \$250.00



Lot #432: SILKWORK SPANIEL.

Description: Silk embroidery on silk, 14 and 1/2 inches x 18 and 3/4 inches (sight) in a gilded liner and mahogany frame under glass.
Estimate: \$300.00 - \$500.00



Lot #433: GROUP OF THREE ANIMAL SKIN THROW RUGS.

Description: On velvet backings.
dimensions: 5 feet 1 inch wide x 6 feet 6 inches long,
4 feet 4 inches wide x 6 feet 6 inches long, 36 inches wide x 46 1/2 inches long.
Estimate: \$150.00 - \$200.00



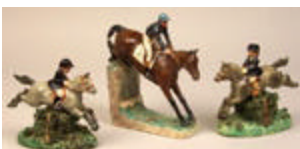
Lot #434: GROUP OF BESWICK CERAMIC ANIMAL FIGURES.

Description: Comprising: two pigs, Ch. Wall Champion Boy and Girl, seven ducks, modelled by Peter Scott, together with four Royal Doulton porcelain piglets and three Royal Doulton miniature rabbits and six miniature duck decoys and a cock and hen.
Estimate: \$125.00 - \$175.00



Lot #435: THREE BESWICK POTTERY BULLS, TWO BESWICK COWS, THREE BESWICK CALVES, A BOEHM BLACK BULL.

Description: -
Estimate: \$175.00 - \$225.00



Lot #436: KATHLEEN WHEELER POTTERY EQUESTRIAN FIGURE.

Description: Of a jockey clearing a hedge, incised signature; together with a pair of pottery hunt figures of jumpers by B. McLaughlin, Newtown Square, Pa., for Touchtone Ceramics. (3 pieces)
dimensions: 9 1/2 inches and 7 inches
Estimate: \$75.00 - \$100.00



Lot #437: TWO CERAMIC ARTICLES.

Description: Comprising a Staffordshire figure of a zebra and a hen-on-nest tureen and cover.
dimensions: length 7 3/4 inches and 7 inches
Estimate: \$80.00 - \$120.00



Lot #438: TAN-GLAZED POTTERY DOGS.

Description: Seated Dogs. With glass eyes, gilt collars and chamfered bases.
Estimate: \$150.00 - \$200.00



Lot #439: GROUP OF EIGHT ENGLISH CERAMIC DOGS.

Description: Comprising: a pair of seated black-faced pug dogs, three seated spaniels, and three standing spaniels.
Estimate: \$250.00 - \$350.00



Lot #440: GROUP OF EIGHT ENGLISH CERAMIC DOG MODELS.

Description: Comprising: a pair of Chelsea type miniature 1 3/4 inch seated spaniels, pair of 4 1/2 inch pug dogs, Rockingham glazed 3 1/2 inch spaniel, 5 inch spongware spaniel, 3 1/2 inch spaniel on cushion and a 4 1/4 inch spaniel penny bank.
Estimate: \$250.00 - \$350.00

Lots 441 - 450



Lot #441: STAFFORDSHIRE WATCH TOWER.

Description: Centered by a clock face surrounded by three sheep; together with a pair of 8 1/4 inch seated poodles, two 5 1/2 inch poodles and 7 7/8 inch spaniel pitcher.

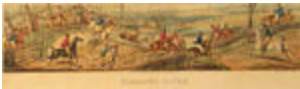
dimensions: height of tower 8 3/4 inches (6 pieces)
Estimate: \$250.00 - \$350.00



Lot #442: GROUP OF FOUR DOG MODELS.

Description: Comprising: alabaster group of poodle and pup on tassled pillow; bronze-patinated metal figure of dachshund; ceramic dachshund; and a pug dog.

dimensions: 5 1/2 inches to 9 inches
Estimate: \$125.00 - \$175.00



Lot #443: FOUR FOX HUNT PRINTS AFTER ALKEN.

Description: Each image (sight) 23 15/16 inches x 6 3/8 inches framed under glass. All marked in the plate below the image "Etched by H. Alken/London, Published by Thos. McLean, 26 Haymarket, 1824/Aquatinted by T. Sutherland" and titled in the margin. Together with 2 folios of German black and white prints.

Estimate: \$200.00 - \$300.00



Lot #444: SIX FOX HUNT PRINTS AFTER ALKEN.

Description: Six colored prints on paper, each marked "H. Alken, Del." in the plate and titled in the margin. All measure 8 1/4 inches x 11 1/4 inches (image, sight), matted and framed under glass; together with 2 small prints of horses after Col. H. Smith.

Estimate: \$250.00 - \$350.00



Lot #445: HARE HUNTING.

Description: Oil on canvas; 10 inches x 14 inches. Bearing label on verso "13 landscape, Hare-hunting. Painted by John Griffier who was born at Amsterdam 1643, died 1718."

Estimate: \$300.00 - \$500.00



Lot #446: THE BIRDCATCHER.

Description: Oil on canvas; 9 5/6 inches x 10 13/16 inches; inscribed on the stretcher verso, "Old Elve - The Birdcatcher".

Estimate: \$300.00 - \$500.00



Lot #447: COWS IN A LANDSCAPE.

Description: Oil on canvas, 16 inches x 24 inches in an antique frame painted gold.

Estimate: \$400.00 - \$600.00



Lot #448: FARM SCENE.

Description: Oil on canvas, 20 inches x 30 inches; signed lower left, "R. Benedict"; in a modern gilded frame.

Estimate: \$800.00 - \$1200.00



Lot #449: CATTLE IN A STREAM.

Description: Oil on board, 8 and 3/8 inches x 10 and 1/4 inches in a gilded liner and frame.

Estimate: \$175.00 - \$225.00



Lot #450: SHEPARD SURVEYING HIS FLOCK.

Description: Oil on canvas, 17 inches x 25 and 1/2 inches in a modern frame.

Estimate: \$700.00 - \$900.00

Lots 451 - 460



Lot #451: EUROPEAN LANDSCAPE WITH FIGURES AND HOUSE.

Description: Oil on wooden panel laid down on paperboard; 7 5/8 inches x 10 1/2 inches, in an ornate gold frame with molded plaster decoration.
Estimate: \$400.00 - \$600.00



Lot #452: LANDSCAPE WITH RUINS.

Description: Oil on copper, 6 inches x 4 inches, signed lower center "Rogers"; in a cast metal frame.
Estimate: \$80.00 - \$100.00



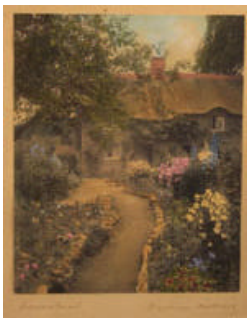
Lot #453: EUROPEAN PORT.

Description: Oil on canvas, 25 inches x 33 inches; signed indistinctly lower right.
Estimate: \$800.00 - \$1200.00



Lot #454: COTTAGE & GARDEN.

Description: Oil on canvas, 10 inches x 13 and 3/4 inches, signed and dated lower right, F. Vincoe 1902. Framed.
Estimate: \$175.00 - \$275.00



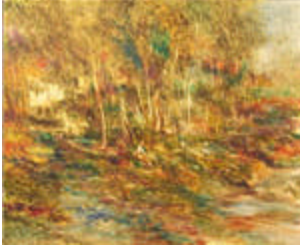
Lot #455: "LARKSPUR".

Description: Print with heightened color on paper, 9 1/4 inches x 7 7/16 inches (image, sight), titled in the margin lower left, and signed right "Wallace Nutting". Framed under glass
Estimate: \$100.00 - \$200.00



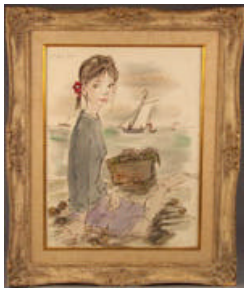
Lot #456: "THE HILLS OF HOME".

Description: Oil on canvas, 29 inches x 36 inches; signed lower right "Anton Kamp" and inscribed on the stretcher "Anton Kamp/1952 Sall Mill River Rd./White Plains NY/Title "The Hills of Home"; framed.
Estimate: \$500.00 - \$700.00



Lot #457: RESTING IN THE WOODS.

Description: Oil on canvas, 19 inches x 23 inches. Signed upper left "Pollack '63 and inscribed on verso "Reginald Pollack/1963 copyright/ 'Woods and Seated Man' ".
Estimate: \$200.00 - \$300.00



Lot #458: YOUNG GIRL BY A HARBOR.

Description: Watercolor and marker on paper, 24 7/8 inches x 19 inches (image, sight); signed upper left "P.L. Noyer" 1967"; in a period frame.
Estimate: \$100.00 - \$200.00



Lot #459: ENGLISH CARVED FRUITWOOD TOBACCO JAR.

Description: In the form of the head of a bulldog with glass eyes and red felt collar.
dimensions: height 5 and 7/8 inches
Estimate: \$200.00 - \$300.00



Lot #460: TWO ENGLISH TREENWARE COIN BANKS.

Description: Each in the form of a crenellated tower one applied with a view "The Harbour-Ramsgate"; together with a salmon-ground toile peinte lidded box.
dimensions: 3 inches and 4 1/4 inches
Estimate: \$150.00 - \$200.00

Lots 461 - 470



Lot #461: TWO ENGLISH WOODEN BOXES.

Description: The first of chamfered outline, decorated with feathers centering a landscape scene on paper, opening to a fitted interior; the second inlaid fruitwood, mounted with a portrait engraving of a woman, after Ander.

dimensions: 12 1/4 inches, 6 1/8 inches

Estimate: \$225.00 - \$325.00



Lot #462: TWO LIDDED BOXES.

Description: One cream ground lacquer in the paisley pattern, the other wood with reclining nude figure, mirror on reverse.

dimensions: 9 inches long and 10 inches long

Estimate: \$30.00 - \$50.00



Lot #463: VICTORIAN PAPIER-MACHE MINIATURE TRAY-ON-STAND.

Description: The oval surface with mother-of-pearl band; together with a pair of 4 1/4 inch papier-mache dishes. (3 pieces)

Estimate: \$200.00 - \$300.00



Lot #464: VICTORIAN MOTHER-OF-PEARL INLAID BLACK LACQUER PAPIER-MACHE GAMES BOX.

Description: The angular scalloped hinged top with floral cluster, opening to five lidded boxes containing mother-of-pearl chips and counters. With key.

dimensions: 12 1/2 inches wide

Estimate: \$150.00 - \$200.00



Lot #465: VICTORIAN MOTHER-OF-PEARL INLAID BLACK LACQUER PAPIER-MACHE INK STAND.

Description: With scalloped hinged three compartment box fronted by a pen tray with floral decoration; together with a maroon ground papier-mache 13 3/4 inch shell-form tray.

Estimate: \$150.00 - \$250.00



Lot #466: ENGLISH BLACK-GROUND TOLE PEINTE CRUET STAND.

Description: Together with four glass cruets, two with silver-plated lids centered by a gilt-metal handle.
dimensions: 8 and 1/2 inches high
Estimate: \$100.00 - \$150.00



Lot #467: PAIR OF WROUGHT IRON ANDIRONS.

Description: In the Renaissance style.
dimensions: 22 inches high
Estimate: \$175.00 - \$225.00



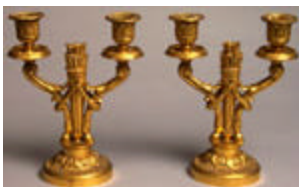
Lot #468: VINTAGE OLIVER TYPEWRITER.

Description: "The Printype" patented Nov. 5, 1912, with labor patents through 1917. Together with an iron cooking implement.
Estimate: \$40.00 - \$60.00



Lot #469: GROUP OF THREE BRASS TABLE ARTICLES.

Description: Comprising a sunflower tripod dish, oval lidded tea caddy with drop handles and a stationery clip cast with wheat sheaths.
Estimate: \$60.00 - \$80.00



Lot #470: PAIR OF LOUIS XVI GILT BRONZE TWO-LIGHT CANDELABRA.

Description: Each stem in the form of a fluted arrow flanked by husk-hung candlearms with hoof feet and circular bases.
dimensions: 8 inches high
Estimate: \$250.00 - \$350.00

Lots 471 - 479



Lot #471: FRENCH GILT BRONZE BUST OF A GENTLEMAN.

Description: On verde antico marble base.
dimensions: 7 inches
Estimate: \$100.00 - \$200.00



Lot #472: TIFFANY FURNACES FAVRILE GLASS AND BRONZE PLATE.

Description: Impressed "Louis C. Tiffany Furnaces Inc." Favrite with narrow mosaic-inlaid edge, surface severely abraded.
dimensions: 11 3/4 inches diameter
Estimate: \$40.00 - \$60.00



Lot #473: PAIR OF BLUE AND WHITE CHINESE VASES.

Description: Of typical tapered cylindrical form and decorated with figures.
Estimate: \$1000.00 - \$1500.00 Reserve: \$950.00



Lot #474: PAIR OF CHINESE BLUE AND WHITE VASES WITH LIDS.

Description: Of typical bulbous form decorated with Chinese characters and floral motifs.
dimensions: 19 inches high
Estimate: \$900.00 - \$1100.00 Reserve: \$950.00



Lot #475: PAIR OF CHINESE CYLINDRICAL FORM VASES.

Description: Decorated in green, pink and red depicting dragons and birds.
dimensions: 11 and 1/2 inches high x 5 inches wide
Estimate: \$400.00 - \$600.00 Reserve: \$375.00



Lot #476: PAIR OF CHINESE VASES.

Description: Decorated in a blue and gold background, the central panels depicting hunting scenes.

dimensions: 12 inches high x 10 inches wide

Estimate: \$900.00 - \$1000.00



Lot #477: LIDDED CHINESE ARMORIAL VASE.

Description: Decorated in orange and black with an unidentified coat of arms.

dimensions: 16 inches high x 6 and 1/2 inches wide

Estimate: \$250.00 - \$275.00 **Reserve: \$225.00**



Lot #478: A LARGE CHINESE VASE.

Description: Decorated with birds and cherry blossoms.

dimensions: 22 inches high

Estimate: \$1000.00 - \$1500.00 **Reserve: \$950.00**



Lot #479: CHINESE FISH BOWL.

Description: Decorated with a landscape.

dimensions: 14 inches high x 16 inches wide

Estimate: \$500.00 - \$600.00 **Reserve: \$425.00**