

## Lots 1 - 10

### **Lot #1: SIX CHINESE PORCELAIN SNUFF BOTTLES AND ASSOCIATED STOPPERS**



Comprising 2 cylindrical with cock or figure on a road beneath a figure in the clouds, a flattened spherical bottle with iron red flowers, 2 flat bottles with bird or flower and character reserve, and a butterfly and chrysanthemum-decorated bottle; 1 7/8 to 3 in. Provenance: From the estate of Fernando Sanchez.  
Estimate: \$ 250.00 - \$ 350.00

### **Lot #1A: FIVE CHINESE PORCELAIN SNUFF BOTTLES**



Comprising an ovoid peach bloom and a flattened solid green bottle, an ovoid figural bottle with iron red 6-character mark, a 2-handled blue bottle and a red mineral bulls eye bottle, associated jade or coral stoppers; 1 3/4 to 3 in.  
Estimate: \$ 200.00 - \$ 300.00

### **Lot #2: FOUR CHINESE PORCELAIN SNUFF BOTTLES AND STOPPERS**



Comprising 2 cylindrical with maroon dragon amidst clouds and figures and household implements, a blue and white double bottle with vinework and a baluster bottle with fu dogs, 4 character mark; 2 5/8 to 3 1/8 in.  
Estimate: \$ 200.00 - \$ 300.00

**Lot #2A: TWO CHINESE CARVED AND POLYCHROME IVORY FIGURAL SNUFF BOTTLES AND STOPPERS AND FOUR JAPANESE IVORY FIGURES**



The 2, a lady with bird, or a gentleman with fan, together with a boy riding a koi, a seated figure holding a staff and 2 squatting figures holding a basket or a panel; 1 1/2 to 3 1/4 in. Estimate: \$ 150.00 - \$ 250.00



**Lot #3: CHINESE BLUE AND WHITE PORCELAIN DRAGON SNUFF BOTTLE**

With underglaze blue 6-character mark of Qianlong, the cylindrical bowl with scaly dragon, flaming pearl and clouds, stained ivory disc stopper cap; 2 15/16 in. Provenance: From the estate of Fernando Sanchez.

Estimate: \$ 300.00 - \$ 500.00

**Lot #4: FIVE CHINESE PORCELAIN SNUFF BOTTLES AND STOPPERS**



Comprising 3 of flattened ovoid form with cabbage leaf yellow-ground flower and vine and green and iron red dragon on blue ground, each with 4 character iron red mark, one block form with iron red vinework, and bird and blossom enameled bottle; 1 5/8 to 2 1/2 in.

Estimate: \$ 150.00 - \$ 200.00

**Lot #5: GROUP OF SIX CHINESE IRON-RED DECORATED PORCELAIN SNUFF BOTTLES**



Comprising a cylindrical bottle with fu dog and wheel, 2 flattened spherical with dragon and flaming pearl or 2 figural rondels, one ovoid with carp, and 2 pear-form with figures or fu dog, 3 with associated stoppers; 2 1/2 to 3 in. Provenance: From the collection of Gordon Getty.

Estimate: \$ 700.00 - \$ 900.00

**Lot #6: GROUP OF TEN CHINESE SNUFF BOTTLES AND ASSOCIATED STOPPERS**



Comprising 3 light green jade bottles, one relief-carved with caparisoned elephant, 4 agate with carved cock or crane amidst foliage, or unembellished, a red overlay and a blue Peking glass bottle, dragon carved ivory cylindrical bottle, and cylindrical bottle with maroon fu dogs; 2 1/4 to 4 in.

Estimate: \$ 400.00 - \$ 600.00

**Lot #7: FOUR CHINESE INTERIOR PAINTED GLASS SCENT BOTTLES**



Comprising one with prunus plant in jardinière and marine plants, 2 red overlay with lake scenes and goats, tiao tieh mask handled, the last amber with figures seated on rockwork, associated stoppers; 1 7/8 to 2 5/8 in.

Estimate: \$ 250.00 - \$ 350.00



**Lot #8: CHINESE INTERIOR PAINTED  
GLASS SNUFF BOTTLE AND STOPPER**

Comprising 3 light green jade bottles, one relief-carved with caparisoned elephant, 4 agate with carved cock or crane amidst foliage, or unembellished, a red overlay and a blue Peking glass bottle, dragon carved ivory cylindrical bottle, and cylindrical bottle with maroon fu dogs; 2 1/4 to 4 in. Provenance: From the estate of William M. V. Kingsland.

Estimate: \$ 500.00 - \$ 800.00



**Lot #9: PEKING SPATTER GLASS SNUFF  
BOTTLE**

Of flattened ovoid form, with iron red, black and opaque spatters, lacking lid, with dipper; 2 3/4 in.

Estimate: \$ 250.00 - \$ 350.00



**Lot #10: THREE PEKING GLASS  
YELLOW SWIRL SNUFF BOTTLES AND  
ASSOCIATED STOPPERS**

Each of flattened ovoid form, 2 with yellow glass-topped stopper, one with stained cork, orange-stained dippers; 2 1/4 to 2 3/8 in.

Provenance: From the estate of Fernando Sanchez.

Estimate: \$ 150.00 - \$ 250.00

[To Top](#)

[Back](#)

[Next](#)

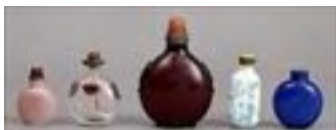
## **Lots 11 - 20**



### **Lot #11: GROUP OF NINE PEKING AMBER GLASS SNUFF BOTTLES AND ASSOCIATED STOPPERS**

Of flattened spherical ovoid or pear form, unembellished; 2 1/4 to 2 3/4 in. Provenance: From the estate of Fernando Sanchez.

Estimate: \$ 300.00 - \$ 400.00



### **Lot #12: FIVE PEKING GLASS SNUFF BOTTLES**

Comprising one red with tiao tieh mask handles and brass and coral stopper, turquoise-overlay opaque bottle with figure in a boat and another figure, another with ruby bats and stylized handled, each with cork stopper, a blue and a pink flattened spherical bottle, one with cork stopper; 1 7/8 to 3 1/4 in. Provenance: From the estate of Fernando Sanchez.

Estimate: \$ 300.00 - \$ 400.00



### **Lot #13: FIVE CHINESE MINERAL GLASS SNUFF BOTTLES AND ASSOCIATED STOPPERS**

Of flattened spherical or ovoid form, 3 with yellow-rimmed coral glass stoppers, 2 with painted cork stoppers, all with wood dippers; 2 3/8 to 2 3/4 in. Provenance: From the estate of Fernando Sanchez.

Estimate: \$ 300.00 - \$ 500.00

**Lot #14: MUTTON FAT JADE FOOTED  
SNUFF BOTTLE AND FOUR PEKING  
OPAQUE GLASS BOTTLES AND  
ASSOCIATED STOPPERS**



The one of flattened ovoid form, the others including 2 similar with belted shoulders and 2 flattened ovoid, associated stopper; 2 1/8 to 2 3/8 in. Provenance: From the estate of Fernando Sanchez.

Estimate: \$ 200.00 - \$ 300.00



**Lot #15: CHINESE CARVED AGATE  
SNUFF BOTTLE AND STOPPER**

Relief-carved with 2 figures on a parapet, above incised waves and a leaping fish, a floating figure above; 2 in.

Estimate: \$ 200.00 - \$ 300.00

**Lot #16: GROUP OF FIVE CHINESE  
MINERAL SNUFF BOTTLES**



Comprising 3 agate with leaf inclusions, one with tiao tieh mask handles; a jadite ovoid bottle and a vertical grooved bottle, associated stoppers; 2 1/8 to 2 3/4 in. Provenance: From the estate of William M. V. Kingsland.

Estimate: \$ 300.00 - \$ 500.00



**Lot #17: CHINESE INCISED AND  
CARVED TORTOISESHELL  
OCTAGONAL SCENT BOTTLE AND  
STOPPER**

Incised with mountain landscape and calligraphy flanked by tiao tieh ring handles, cloud band-carved amber stopper; 3 1/8 in.

Estimate: \$ 400.00 - \$ 600.00

**Lot #18: THREE CHINESE CARVED  
IVORY SNUFF BOTTLES AND  
STOPPERS, A CINNEBAR LACQUER  
BOTTLE AND A MONGOLIAN BOTTLE**



The 3 variously carved with an elephant flanking praying bodhisattvas, household implements, and peonies, picked out in black, the lacquer carved with a lake scene, gilt 4-character mark, the Mongolian with 2 ivory panels of figures in a pagoda, coral and turquoise-mounted metal ground; 2 1/2 to 3 3/4 in.

Estimate: \$ 250.00 - \$ 350.00

**Lot #19: TWO ARCHAISTIC BRONZE  
ARTICLES AND A BRASS HAND  
WARMER**



One Chinese with 4 character panels, the other Japanese modeled as a dragon boat with incised flamework, signed, the hand warmer with honeycomb cover swing handle and incised rondels and butterflies; 3 to 3 3/8 in. x 4 to 7 3/4 in.

Estimate: \$ 200.00 - \$ 400.00



**Lot #20: SHANG BRONZE TRIPOD GU**

Of banded helmet-form with beaker-form spout, flanked by pointed triangular posts, with c-scroll handle and flared legs, in fitted box; 6 7/8 x 5 7/8 x 3 in.

Estimate: \$ 400.00 - \$ 600.00

[Back](#)

[To Top](#)

[Next](#)

## **Lots 21 - 30**



### **Lot #21: CHINESE BRONZE SMALL MOUNTAIN GROUP**

Modeled as 5 graduated peaks pierced with 3 caves and with a crab, a turtle, a leaping stag and 2 birds, fitted onto a hardwood stand; 4 7/8 x 7 3/4 in.

Estimate: \$ 300.00 - \$ 500.00



### **Lot #22: CHINESE SILVER JARDINIÈRE ON STAND**

Of cylindrical form, repoussé and chased with scaly dragons, on x-form "bamboo" stand, each with impressed mark; 5 1/4 x 10 3/4 x 2 in., approx. 14 oz.

Estimate: \$ 300.00 - \$ 400.00



### **Lot #23: TWO CHINESE ENGRAVED SILVER TRAYS**

Each with bamboo shoots centering a disc or an oval, the larger with "bamboo" rim, unmarked; 13 1/4 in. diam., approx. 43 oz.

Estimate: \$ 300.00 - \$ 500.00





**Lot #24: CHINESE JADE-MOUNTED  
HARDWOOD PICTURE FRAME AND  
TWO JADE PANELS**

Pierced and carved with flowers, vinework and birds, the circular disc with 2 figures amidst clouds, the other with vinework, hardwood stands; 11 x 8 1/2 in.

Estimate: \$ 250.00 - \$ 350.00



**Lot #25: CHINESE CARVED JADE-  
MOUNTED AND PEWTER-INLAID  
EBONY JUI SCEPTER**

The 3 oblong plaques carved with a figure in a boat, a figure on a mountain ledge, and a child on a path flanked by a pine tree, the waved scepter inlaid with characters and cloud bands;

3 1/8 x 20 1/4 x 5 1/2 in.

Estimate: \$ 600.00 - \$ 800.00



**Lot #26: CHINESE CARVED AGATE  
QUATREFOIL FOOTED BOX AND  
COVER**

The cover carved with a coiled snake, salamander, spider and 2 crustaceans, pierced hardwood stand; 3 1/4 x 5 1/2 in.

Estimate: \$ 250.00 - \$ 450.00



**Lot #27: TWO ARCHAISTIC CARVED  
JADE ANIMALS**

The larger a feline incised with scrolls and lines centering a bowl, the other a growling dragon, hardwood stands; 5 1/4 x 7 1/2 in. and 6 1/4 x 9 1/2 in.

Estimate: \$ 300.00 - \$ 500.00



**Lot #28: TWO CHINESE CARVED GREEN ROCK CRYSTAL JARS AND COVERS**

Of graduated size, pierced and carved with birds amidst flowering vines, on pierced and blossom-carved stands; overall: 9 1/4 and 10 1/4 in.

Estimate: \$ 400.00 - \$ 600.00



**Lot #29: CHINESE CARVED PALE GREEN JADE FOOTED SHALLOW BOX AND COVER**

The flat dome cover relief-carved with horses on the banks of a river, with bridge and willow branches, on tiered hardwood and pierced sandalwood stand; 3 7/8 x 5 1/2 in., 6 1/4 in. diam.

Estimate: \$ 500.00 - \$ 800.00



**Lot #30: GROUP OF SIX CHINESE SMALL TABLE ARTICLES**

Comprising a pair of green jade fu dogs, a rock crystal trumpeting elephant and sphere, a green striated peking glass cabbage-form snuff bottle and stopper, and a pair of champlévé and gilt-metal fu dogs; 1 3/8 to 1 7/8 in. x 1 3/4 to 2 3/4 in.

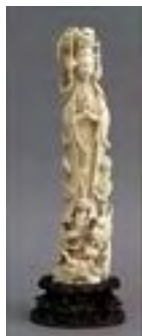
Estimate: \$ 125.00 - \$ 175.00

[To Top](#)

[Back](#)

[Next](#)

## Lots 31 - 40



### **Lot #31: CHINESE CARVED IVORY FIGURE OF KWAN YIN PRAYING**

In elaborate headdress flanked by eagle and flowing robes with bead swags, standing on a dragon and hovered dog, on pierced hardwood stand; 14 in.

Estimate: \$ 500.00 - \$ 800.00



### **Lot #32: CHINESE CARVED IVORY CLAM GROUP AND A FRUIT GROUP**

The shell incised with flower head and fronds, the interior pierced and carved with a village scene incorporating an equestrian and figures on the street, the fruit with lotus tendrils also enclosing a village scene, on hardwood stands; 2 1/4 x 3 in. and 2 1/8 x 2 1/4 in.

Estimate: \$ 300.00 - \$ 500.00



### **Lot #33: CHINESE CARVED IVORY PUZZLE BALL ON FIGURAL STAND**

Pierced and carved with concentric balls incorporating scaly dragons, the stand carved with a female figure holding a lotus stem; 8 x 2 7/8 in.

Estimate: \$ 250.00 - \$ 450.00



**Lot #34: CHINESE CARVED IVORY VISE AND A FILIGREE CALLING CARD CASE**

The one with relief-carved figure panels with screw post and handle with 2 loose discs, the pierced case carved with figure panels; 4 1/4 x 1 1/4 in. and 3 1/4 x 1 3/4 in.

Estimate: \$ 300.00 - \$ 400.00



**Lot #35: CHINESE CARVED IVORY FILIGREE VASE**

The hexagonal tapered bowl with sloping shoulder and cylindrical neck, pierced and carved with figure panels; 8 3/4 x 3 3/4 in.

Estimate: \$ 400.00 - \$ 600.00



**Lot #36: CHINESE CARVED IVORY FIGURE OF A GUARD**

Standing, wearing mail and holding a spear, on hardwood stand; 13 3/4 in.

Estimate: \$ 300.00 - \$ 500.00



**Lot #37: CHINESE CELADON-GLAZED HEXAGONAL BARREL-FORM STOOL**

The seat with pierced rondel and 5 blue and white bats, the bamboo textured bowl with 6 oblong quatrefoil floral or pierced disc and bat medallions; 18 x 12 in.

Estimate: \$ 500.00 - \$ 700.00



**Lot #38: SIX BLANC DE CHINE  
PORCELAIN ARTICLES**

Comprising a 9 3/4 in. plate with floral center and fret band, an 11 in. fu dog, 3 rhinoceros horn cups and a tripod censer with pierced wood cover, shaped base.

Estimate: \$ 150.00 - \$ 250.00



**Lot #39: TWO CHINESE IVORY-GLAZED  
PORCELAIN ARTICLES**

Comprising a dish with incised fruit and foliage and a plate relief-decorated with floral rondel, vinework and scroll border, unmarked; 5/8 in., 5 7/8 in. diam. and 7/8 in. and 8 5/8 in. diam.

Provenance: From the estate of Fernando Sanchez.

Estimate: \$ 250.00 - \$ 350.00



**Lot #40: COLLECTION OF SEVENTEEN  
CHINESE PORCELAIN MINIATURE  
VASES**

Variously glazed in tea dust, mirror black, flambé, turquoise drip and monochrome, of baluster, pear and double-gourd form; 2 1/4 to 3 in.

Estimate: \$ 400.00 - \$ 600.00

[To Top](#)

[Back](#)

[Next](#)

## **Lots 41 - 50**



### **Lot #41: PAIR OF GLAZED BISCUIT FIGURES OF SAGES**

Identical molds of smiling bearded man holding a blue branch with pomegranates over his shoulder, raised left hand, unmarked.

Estimate: \$ 1000.00 - \$ 1500.00



### **Lot #42: PAIR OF CHINESE GREEN-GLAZED PORCELAIN BOTTLE VASES**

Each with underglaze blue 6-character mark of Qianlong, each footed with crackle glaze and ivory rim and interior; 15 3/4 in., approx. 10 1/2 in. diam.

Estimate: \$ 1500.00 - \$ 2000.00



### **Lot #43: TWO CHINESE FLAMBÉ-GLAZED FOOTED DISHES AND A BLUE-GLAZED DISH**

The 2 with ivory rims, the smaller with underglaze blue qianlong mark, the blue dish with brown rim and inset corners; 7/8, 1 1/4 and 1 1/8 in. and 4 1/2 to 7 5/8 in. diam.

Provenance: From the estate of Fernando Sanchez.

Estimate: \$ 400.00 - \$ 600.00



**Lot #44: FAMILLE VERTE  
POLYCHROME BISQUE FIGURE OF  
KWAN YIN ON LOTUS STAND**

Modeled seated with hands down on lap, the lotus stand above pierced gallery and oblong hexagonal lower section; 16 1/2 in.

Estimate: \$ 1500.00 - \$ 2500.00



**Lot #45: FAMILLE VERTE  
POLYCHROME BISQUE FIGURE OF  
KWAN YIN**

Modeled seated with right hand holding a box and left hand down on knee; 9 5/8 in.

Estimate: \$ 1200.00 - \$ 1800.00



**Lot #46: CHINESE FAMILLE VERTE  
LARGE BALUSTER-FORM JAR AND  
COVER**

The bowl with continuous garden view of ladies and scholars within iron red fencing and flanking rockwork and palms, the cover with 2 boys playing, unmarked, on pierced hardwood stand; 19 1/4 in., approx. 14 1/2 in. diam.

Estimate: \$ 700.00 - \$ 1000.00



**Lot #47: CHINESE "FAMILLE ROSE"  
PORCELAIN VASE**

The baluster-form bowl enameled with 2 woman in a garden, the neck with tiao tieh mask ring handle.

Estimate: \$ 300.00 - \$ 500.00



**Lot #48: PAIR OF FAMILLE ROSE PORCELAIN FIGURES OF LADIES ON STANDS**

Each identical mold, wearing 3-prong headpiece and holding a scepter over colorful robes, separate stands pierced with quatrefoils; overall: 13 in. Provenance: Earle D. Vandekar. Estimate: \$ 800.00 - \$ 1200.00



**Lot #49: FAMILLE ROSE PORCELAIN RECUMBENT NODDING HEAD FIGURE**

The smiling face with knotted hair, wearing a red robe with raised hands. Estimate: \$ 800.00 - \$ 1200.00



**Lot #50: TWO CHINESE SMALL BLUE AND WHITE BOWLS AND A YELLOW-GROUND VASE**

The one restored with Qianlong mark and with the 8 immortals, the other, Ming, with honeycomb band, the vase with pseudo mark, with relief vast green and aubergine dragons; 2 1/2 to 8 3/4 in. x 4 1/4 to 5 7/8 in. Estimate: \$ 1500.00 - \$ 2500.00

[To Top](#)

[Back](#)

[Next](#)



## **Lots 51 - 60**



### **Lot #51: PAIR OF CHINESE BLUE AND WHITE PORCELAIN GINGER JARS AND COVERS**

Each spherical bowl with 4 lobed reserves depicting household articles, on cracked ice and prunus blossom ground, underglaze blue concentric circle mark; 12 1/4 in., approx. 11 in. diam.

Estimate: \$ 1200.00 - \$ 1800.00



### **Lot #52: ASSEMBLED PAIR OF CHINESE BLUE AND WHITE GARDEN SEATS**

Each of barrel form with shi shi dog, ribbon bands and molded nail heads, bead enclosed mask head handles; 20 in., 13 in. diam.

Estimate: \$ 500.00 - \$ 1000.00



### **Lot #53: KOREAN RED-DECORATED PORCELAIN BOWL**

The interior border with 2 fish and 2 fruiting branch ovals on trellis ground, the exterior with birds amidst band of bamboo, prunus and pines; 6 5/8 in., 12 in. diam.

Estimate: \$ 300.00 - \$ 500.00



**Lot #54: PAIR OF CHINESE  
LACQUERED WOOD FIGURAL  
PRICKET STICKS**

Each in the form of a smiling attendant wearing a banded hat and holding aloft the candle dish, on flared block base; approx. 8 3/4 x 4 3/4 x 4 3/4 in.

Estimate: \$ 300.00 - \$ 500.00



**Lot #55: SINO-TIBETAN CARVED  
POLYCHROME GROUP**

Carved as Kwan Yin with scepter, on the back of a trumpeting elephant naturalistic base; 29 x 24 in.

Estimate: \$ 500.00 - \$ 700.00



**Lot #56: PAIR OF CHINESE CARVED  
AND PAINTED WOOD FIGURES OF  
KWAN YIN, MOUNTED ON LAMP  
STANDS**

Each in flowing robes seated on rockwork holding a vase; 19 1/2 in. tall.

Estimate: \$ 250.00 - \$ 350.00



**Lot #57: CHINESE CARVED  
HARDWOOD LARGE FIGURAL GROUP**

Carved as Kwan Yin with ivory and ebony inlaid eyes, curving to the right and holding a scroll and beads, with praying child attendant amidst lotus blooms, with fu dog peering out at bottom; 4 ft. 3 in. x 17 in.

Estimate: \$ 700.00 - \$ 1000.00



**Lot #58: CHINESE ROOTWOOD BOWL**

Of natural form, the flattened bowl surface with central ovoid recess; 13 1/2 x 24 x 21 in.

Estimate: \$ 800.00 - \$ 1200.00



**Lot #59: CHINESE CARVED  
HARDWOOD KANG TABLE**

The rectangular top above a molded frieze, serpentine apron and shaped legs joined by ox-bow stretchers; 11 1/2 x 41 3/4 x 20 1/2 in.

Estimate: \$ 250.00 - \$ 450.00



**Lot #60: PAIR OF CHINESE HUANG  
HUALI ARMCHAIRS**

Each horseshoe shape top rail and arms above spoon-shape splat with relief-carved medallion, the woven paneled seat on round legs joined by arched backs and box stretchers; 38 x 25 1/2 in.

Provenance: From the estate of Fernando Sanchez.

Estimate: \$ 800.00 - \$ 1200.00

[To Top](#)

[Back](#)

[Next](#)

## Lots 61 - 70



### **Lot #61: PAIR OF CHINESE CARVED HARDWOOD PEDESTALS**

Each square overhang top above a drawer with incised quatrefoil panel and pomegranate aprons, the block legs joined by 2 spindle shelves; 34 1/2 x 14 in.

Estimate: \$ 700.00 - \$ 900.00



### **Lot #62: CHINESE BRASS-MOUNTED HUANG HUALI TWO-PART CUPBOARD**

The upper part enclosed by a pair of doors with circular lock plates and hinges, the lower section enclosed by a pair of doors, above an apron relief-carved with dragons amidst vine work; 8 ft. 8 1/2 in. x 4 ft. 7 1/2 in. x 22 1/4 in.

Estimate: \$ 2500.00 - \$ 3500.00



### **Lot #63: PAIR OF CHINESE BLACK-STAINED ELM ARMCHAIRS**

Each with central vertical splat with pierced red-painted shaped lattice panel, the arms on turned supports and the plank seats on pierced rails and round legs joined by s-stretcher; 42 3/4 x 24 x 17 in.

Estimate: \$ 500.00 - \$ 800.00



**Lot #63A: GNARLED ELM MIRROR**

The shaped plate within natural rootwood frame, modern; 34 1/2 x 28 in. Provenance: From the estate of Fernando Sanchez.  
Estimate: \$ 500.00 - \$ 800.00



**Lot #64: CHINESE RED-STAINED ELM CENTER TABLE**

The rectangular top on angular legs joined by raised c-scroll brackets and ending in scroll feet; 33 x 5 ft. 3 1/4 in. x 28 in.  
Estimate: \$ 800.00 - \$ 1200.00



**Lot #65: CHINESE ELM ALTAR TABLE**

The rectangular overhang top with applied molded edge, and ox-bow stretchers, on round legs, formerly lacquered; 33 3/4 x 4 ft. x 15 in.  
Estimate: \$ 400.00 - \$ 600.00



**Lot #66: PAIR OF CHINESE CARVED HARDWOOD ARMCHAIRS**

Each waved top rail above a pierced fruit, foliate and c-scroll splat, the plank seat above cloud band rails and angular legs joined by box stretcher; 38 x 23 1/2 x 19 in.  
Estimate: \$ 800.00 - \$ 1200.00

**Lot #67: NO LOT**



**Lot #68: CHINESE PAINTING ON A LEAF**

Watercolor, depicting figures seated on either side of a tree, laid down on blue ground, with inscription upper right, giltwood frame; leaf: 7 1/2 in. x 5 1/2 in. Provenance: From the estate of William M. V. Kingsland.

Estimate: \$ 200.00 - \$ 300.00



**Lot #69: TWO MING ANCESTRAL PORTRAITS ON SILK**

The larger wearing red robes with a brocade sash, and a pearl-trimmed tiara, the other wearing a hat and a lapis blue robe with black and brown trimmings, each in giltwood frame; sight: 45 1/2 x 19 1/4 in. and 38 x 16 3/4 in.

Estimate: \$ 800.00 - \$ 1200.00



**Lot #70: PAIR OF CHINESE ANCESTOR PORTRAITS**

Watercolor on paper: a seated official in ermine-trimmed cobalt coat with badge, and a lady in gold embroidered red coat and wearing an elaborate headdress, matted and framed; 4 ft. 6 1/2 in. x 34 in.

Estimate: \$ 1200.00 - \$ 1800.00

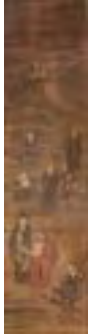


**Lot #70A: XHANG CHANG GONG SCROLL PAINTING**

Wash and ink on silk: showing a village by a river nestled into foot hills, with cloud-enshrouded mountain peaks in rear, artist's chop and inscription upper right, on white silk, with hardwood base pole, titled on upper pole; image: 4 ft. 3 1/2 x 20 in., overall: 7 ft. 1 in. x 25 in.

Estimate: \$ 300.00 - \$ 500.00

## Lots 71 - 80



### **Lot #71: SET OF SIX CHINESE SCROLL PAINTINGS**

Watercolor on silk, variously depicting sages, priests and immortals in tiered mountain landscapes; image: 5 ft. 9 in. x 17 1/2 in.  
Estimate: \$ 800.00 - \$ 1200.00



### **Lot #72: CHINESE PAINTING ON SILK**

Watercolor, showing figures in a landscape behind a wall, some at table, others viewing rockwork and others in conversation, mountains in rear, beneath detailed inscription, on silk mat and in giltwood frame; image: 4 ft. 7 in. x 27 3/8 in., overall: 5 ft. 5 1/4 in. x 35 in.  
Estimate: \$ 500.00 - \$ 700.00



### **Lot #73: HE WEIPU: LANDSCAPE**

Watercolor on silk; with pagodas nestled in the mountains with water, silk mat and hardware pole, artist's chop and inscription upper left; image: 4 ft. 11 1/4 x 16 in., scroll: 7 ft. 10 1/4 in. x 22 in.  
Estimate: \$ 700.00 - \$ 900.00



**Lot #74: THREE JAPANESE  
WOODBLOCK PRINTS BY UTAMARA**

Showing geisha reading, 2 sewing and 2  
chatting, unframed; sheet: 14 3/4 x 9 7/8 or 10  
1/4 in.

Estimate: \$ 300.00 - \$ 500.00



**Lot #75: GROUP OF FOUR JAPANESE  
WOODBLOCK PRINTS**

Three of vertical composition showing a lady  
and suitor on either side of wall, seated man  
with fan with geisha, and a group on a road, the  
last, horizontal, with ladies at tea with  
musicians, matted, iron red painted frames;  
sight: 25 x 4 1/2 in., 19 x 7 1/4 in., 14 3/4 x 10  
in. and 7 x 10 in.

Estimate: \$ 150.00 - \$ 250.00



**Lot #76: JAPANESE WOODBLOCK  
PRINT BY HARNANOBU**

Showing a maiden on horseback with girl  
attendant, together with a print by Hokkei with  
fish and nuts, unframed; sheet: 10 3/4 x 7 7/8  
in. and 9 7/8 x 6 1/2 in.

Estimate: \$ 100.00 - \$ 200.00



**Lot #77: THREE JAPANESE  
WOODBLOCK PRINTS**

9 1/2 x 4 1/2 in., 3 3/4 x 6 1/8 in. and 6 x 5 1/8  
in.

Estimate: \$ 100.00 - \$ 200.00



**Lot #78: PAIR OF JAPANESE  
WOODBLOCK TRYPTYCHS**



The one depicting a battle with swordsmen, cavalry and riflemen, the other with figures on a bank above boats and waves, figures with torches on far shore, each with inscription and artist's mark, matted and framed; sight: 13 3/4 x 27 1/2 in., frame: 21 1/2 x 35 1/4 in.  
Estimate: \$ 400.00 - \$ 600.00



**Lot #79: JAPANESE WOODBLOCK  
TRYPTYCH**

Showing a continuous scene of a noble court with seated lords and ladies, serving girls, and monsters, pavilions and porches at rear, unframed; each sheet: 14 3/4 x 9 3/4 in.  
Estimate: \$ 150.00 - \$ 250.00



**Lot #80: JAPANESE PAINTING ON SILK**  
Showing 2 female musicians in a garden pavilion, one reading music, screen to right and rail and prunus blossom to rear, artist's chop lower left; 17 x 21 1/2 in. (sight).  
Estimate: \$ 300.00 - \$ 500.00

[To Top](#)

[Back](#)

[Next](#)

## Lots 81 - 90



**Lot #81: MEJII BOX AND COVER,  
SIGNED ANDO**

Enameled and hammered copper, with design  
in low relief, 3/4 x 4 1/4 x 3 5/8 in.

Estimate: \$ 200.00 - \$ 300.00



**Lot #82: PAIR OF JAPANESE INLAID  
BRONZE STIRRUPS**

Each c-scroll footrest with pierced grill bracket,  
and inlaid with water ripples and foliate shoots;  
10 x 11 x 5 1/4 in.

Estimate: \$ 300.00 - \$ 500.00



**Lot #83: JAPANESE BRONZE-  
PATINATED FIGURE OF A STALKING  
TIGER**

With head raised growling, outstretched tail,  
unmarked; 6 7/8 x 16 in.

Estimate: \$ 300.00 - \$ 500.00



**Lot #84: JAPANESE BRONZE  
ANIMALIER GROUP**

Modeled as a rearing elephant with raised trunk  
battling 3 tigers, impressed artist's mark on  
belly, lacking elements; approx. 27 1/4 x 23 3/4  
x 12 in.

Estimate: \$ 700.00 - \$ 1000.00



**Lot #85: JAPANESE BRONZE  
ANIMALIER GROUP**

Modeled as a brown bear warding off a monkey from his hind leg, impressed signature on belly; 7 3/4 x 11 in.

Estimate: \$ 700.00 - \$ 900.00



**Lot #86: GROU OF SIX JAPANESE  
CARVED IVORY NETSUKES**

Variouly carved as 2 crouching peasants, 2 street vendors carrying a drum or fruit basket above chicken, a shi shi on the back of a tortoise and a shore bird, each signed; 1 to 2 in.

Estimate: \$ 300.00 - \$ 400.00



**Lot #87: THREE JAPANESE CARVED  
IVORY ARTICLES**

Comprising a treasure ship, signed, netsuke with dragon prow and 7 passengers, a small okimono of a peasant cutting grapes and the figure of a woman holding a scroll; 2 3/8 to 5 5/8 in. x 1 1/8 to 2 1/2 in.

Estimate: \$ 200.00 - \$ 300.00



**Lot #88: JAPANESE CARVED IVORY  
BATON**

The tapered shaft relief carved with iris and chrysanthemums at one side and incised with 2 ladies on the obverse, signed; 13 1/8 x 1 1/16 in.

Estimate: \$ 400.00 - \$ 600.00

**Lot #89: THREE JAPANESE RELIEF  
BRONZE-MOUNTED IVORY MANJUS  
AND AN IVORY MANJU**



The 3 discs with head of Buddha, figure carrying another across water, or a growling figure with raised hand clutching a dagger, the last, signed, with intaglio carved figure of an immortal and an engraved stag on obverse; 1 1/2 to 1 7/8 in. diam.

Estimate: \$ 500.00 - \$ 700.00

**Lot #90: THREE JAPANESE CARVED  
IVORY FIGURES AND A SMALL  
LACQUER LIDDED BOX**



Comprising a seated peasant holding a fan and a bowl, a crouching youth holding a dog-headed sack, signed, another crouching and holding a rope-handled brush, the box with gilt bamboo and floral stalks; 1 1/4 to 3 3/4 in. x 1 1/4 to 2 3/4 in.

Estimate: \$ 250.00 - \$ 350.00

[To Top](#)

[Back](#)

[Next](#)

## Lots 91 - 100



### **Lot #91: JAPANESE CARVED IVORY OKIMONO**

Modeled as a fisherman with basket feeding fish to seagulls, inset red signature panel; 8 x 3 1/4 in.

Estimate: \$ 250.00 - \$ 350.00



### **Lot #92: THREE JAPANESE CARVED IVORY FIGURES**

The largest a woman in wood shoes, incised signature; the second an immortal carrying a pomegranate and the last a crouching official holding a palmette fan, each with inset red signature panel; 3 to 5 3/8 in.

Estimate: \$ 250.00 - \$ 450.00



### **Lot #93: JAPANESE CARVED IVORY CHRYSANTHEMUM GROUP, SIGNED KOG YOKU**

Comprising 3 stems rising out of a brown-stained oblong octagonal jardinière, 2-character signature; 7 x 3 1/2 x 3 3/4 in.

Estimate: \$ 600.00 - \$ 800.00



**Lot #94: JAPANESE CARVED IVORY GROUP**

Carved as a fruiting tree stump encircled by crab and supporting a chained basket with crab inside and 3 climbing the exterior, unsigned; 6 3/8 x 7 in.

Estimate: \$ 600.00 - \$ 800.00



**Lot #95: JAPANESE CARVED IVORY OKIMONO**

Carved as a seated bare-foot youth holding a spiral twist ring above a bucket, incised red ground signature inset; 3 7/8 x 2 1/4 x 3 1/4 in.

Estimate: \$ 300.00 - \$ 500.00



**Lot #96: JAPANESE CARVED IVORY OKIMONO**

Of a bare-foot smiling peasant holding a basket of grapes, flanked by a squirrel, incised 2-character signature beneath trefoil flower; 6 3/4 x 2 3/8 x 1 3/4 in.

Estimate: \$ 400.00 - \$ 600.00



**Lot #97: JAPANESE CARVED IVORY OKIMONO**

Of a skirted fisherman with back pack and basket of fish, engraved red-ground signature inset; 9 3/4 x 3 x 2 3/8 in.

Estimate: \$ 500.00 - \$ 700.00



**Lot #98: JAPANESE CARVED IVORY  
OKIMONO**

Carved as a kneeling woman at a loom, flanked by a small child, stained signature inset; 3 1/8 x 2 3/4 x 2 3/8 in.

Estimate: \$ 350.00 - \$ 450.00



**Lot #99: JAPANESE CARVED IVORY  
OKIMONO**

Of a bare-foot peasant holding a rope-tied marine bird and 2 fish, unsigned; 6 x 2 1/2 x 1 in.

Estimate: \$ 300.00 - \$ 500.00



**Lot #100: JAPANESE CARVED IVORY  
OKIMONO**

Of a fisherman standing on a stump holding a fish net, flanked by a child with a fish, above waves, incised red-ground signature inset beneath oval floral medallion; 10 1/8 x 2 3/4 x 2 3/8 in.

Estimate: \$ 500.00 - \$ 700.00

[To Top](#)

[Back](#)

[Next](#)