

## **Lots 1 - 10**



### **Lot #1: BERLIN IVORY-GLAZED PORCELAIN FIGURE GROUP**

Modeled as 2 nymphs with entwined hands, seated on stylized clouds, underglaze blue sceptre mark; 12 x 10 x 8 1/2 in. Provenance: Property from the collection of Muriel Karasik. Estimate: \$ 1000.00 - \$ 1500.00



### **Lot #2: PAIR OF TIFFANY-STYLE FAVRILE AMBER GLASS SMALL VASES**

Each etched L.C.T. Favre 1833: each slender ovoid bowl with waisted neck, together with a Loetz type shallow bowl with claret lustre overlay and waved rim; 7 1/2 and 2 5/8 in., 2 1/2 and 8 in. diam.

Estimate: \$ 400.00 - \$ 600.00



### **Lot #3: TIFFANY FAVRILE GLASS FLORIFORM VASE**

Etched L.C.T. Favre 5771D: the tapered 10-sided bowl with feathered veined leaves, beneath everted lip, knopped stem; 10 7/8 in.

Estimate: \$ 1500.00 - \$ 2500.00



**Lot #4: GALLÉ CAMEO-CUT GLASS VASE**

The swelling bowl with signature and floral stems in rose on an opaque yellow ground, trefoil everted lip; 7 7/8 in.

Estimate: \$ 700.00 - \$ 1000.00



**Lot #5: AUSTRIAN ART DECO TWENTY-PIECE PORCELAIN TEA SERVICE, ATTRIBUTED TO THE WIENER WERKSTATTE WORKROOMS**

Underglaze blue crown shield and Wien mark and Augarten Austria, comprising 7-7 3/8 in. plates each with girl in a castle tower and 6 cups and 7 saucers, variously decorated with ships and knights (damages and repairs).

Estimate: \$ 600.00 - \$ 800.00



**Lot #6: TIFFANY STUDIOS BRONZE LAMP BASE TOGETHER WITH AN UNSIGNED FAVRILLE GLASS SHADE**

The bell-form violet shade on flared octagonal stem with urn-form lower part and molded base, incised Tiffany Studios New York and numbered 31; 26 1/2 in., 12 1/2 in. diam. of shade.

Estimate: \$ 1200.00 - \$ 1800.00



**Lot #7: THREE TIFFANY FAVRILE GLASS GRADUATED BOWLS**

Etched mark L.C.T. Favrile or L.C. Tiffany Favrile: each with wavy rim; 2 to 2 5/8 in. and 4 to 9 in. diam.

Estimate: \$ 500.00 - \$ 800.00



**Lot #8: LALIQUE OPALESCENT GLASS VASE**

Etched R. Lalique, France, No. 986: relief molded with song birds and berries; 5 3/4 in., 6 3/4 in. diam.

Estimate: \$ 300.00 - \$ 400.00



**Lot #9: AMPHORA PORCELAIN FIGURE OF A GRAY-HAIRED LADY**

Impressed Amphora and crowned mark, made in Czechoslovakia; modeled wearing long plaid dress and jacket with crossed arms, holding a book or tip of chin; 16 x 3 7/8 in. Provenance: Property from the collection of Muriel Karasik.

Estimate: \$ 600.00 - \$ 800.00



**Lot #10: PAIR OF ITALIAN IVORY-GLAZED MAJOLICA FIGURE GROUPS, BY E. MAZZOLANI**

Modeled as a mother embracing a boy or a girl, signed at bases; 16 x 9 3/4 in. and 16 5/8 x 8 3/4 in. Provenance: Property from the collection of Muriel Karasik..

Estimate: \$ 1000.00 - \$ 1500.00

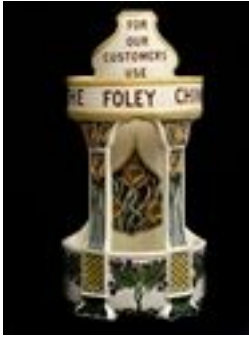


**Lot #10A: EDRIS ECKHARDT (c. 1905-1998): GRAY-PAINTED POTTERY HEAD OF A ROYAL**

Wearing a crown and a beaded necklace, signed Edris Eckhardt inside the crown, hollow throne; 19 1/2 x 6 1/2 in. Provenance: Property from the collection of Muriel Karasik.

Estimate: \$ 800.00- \$ 1200.00

## **Lots 11 - 20**



**Lot #11: ENGLISH ART NOUVEAU  
POTTERY STORE UMBRELLA STAND:  
"FOR OUR CUSTOMER'S USE, FOLEY  
CHINA"**

Of d-shape with shaped inscribed crest and bar stylized tulip stems on supports and grapes and fish scale panels at base; 26 1/2 x 14 x 8 in.

Provenance: Property from the collection of Muriel Karasik.

Estimate: \$ 1800.00 - \$ 2200.00



**Lot #12: GERMAN ART NOUVEAU  
DELFT CHARGER**

Relief modeled with the head of a black-haired nymph facing, left on a yellow ground and sunset border surmounted by a dove, marked Germany; 16 1/8 in. diam. Provenance: Property from the collection of Muriel Karasik.

Estimate: \$ 300.00 - \$ 500.00



**Lot #13: LENCI-DESIGN MAJOLICA  
FIGURE OF A 16TH C. LADY**

Inscribed Lenci Torino, Italy; modeled wearing belted gilt-embroidered red dress, with hands on hips, flanked by cacti; 18 1/8 in. Provenance: Property from the collection of Muriel Karasik.

Estimate: \$ 800.00 - \$ 1200.00



**Lot #14: LENCI-DESIGN FIGURE OF A GIRL**

Marked Lenci Made in Italy; modeled wearing black head scarf and brown and red full skirt, holding a bunch of flowers in her left hand; 11 7/8 in. Provenance: Property from the collection of Muriel Karasik.

Estimate: \$ 800.00 - \$ 1200.00



**Lot #15: FOUR ORREFORS GLASS STEMMED GOBLETS BY NILS LINDBERG**

The bowls of tulip, flute or bell shape in blue, pink and claret, etched Orrefors and Expo. No. 311-57, 312-57, 62-64 and 64-64.

Estimate: \$ 1000.00 - \$ 2000.00



**Lot #16: TINO SARPENEVA GLASS VASE**

Etched signature: the angular baluster bowl with ice textured surface; 8 5/8 x 9 in.

Estimate: \$ 300.00 - \$ 600.00



**Lot #17: PAIR OF ORREFORS GLASS GOBLETS AND A BOWL BY GUNNAR CYRON**

Each clear goblet on yellow, blue, white and orange stripe stem and blue foot, the blood red over blue bowl with blue rings, numbered 222-65; 4 3/8 and 8 3/8 in., 10 1/4 and 4 1/4 in. diam.

Estimate: \$ 250.00 - \$ 450.00



**Lot #18: FRENCH MACHINE-WOVEN  
CARPET: "RHYTHME" DESIGNED BY  
DUBRUNFAUT**

With label of Sion Tapies, the tomato field worked with gray leaves with black and ivory detailing, designer's name at one side; 6 ft. 7 in. x 9 ft. 8 in. Provenance: Property from the collection of Muriel Karasik.

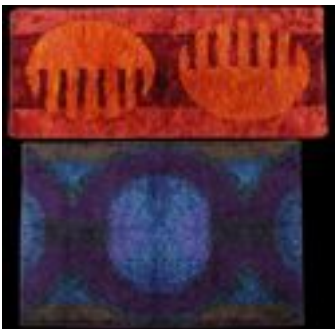
Estimate: \$ 1000.00 - \$ 2000.00



**Lot #19: FRENCH ART DECO MACHINE  
WOVEN TAPESTRY**

Worked with a tennis scene of mixed singles, with 2 girls looking on, the border with paired rackets and balls, giltwood frame. Provenance: Property from the collection of Muriel Karasik.

Estimate: \$ 600.00 - \$ 800.00



**Lot #20: TWO RYA SHAG RUGS**

The one in tones of blue, purple and green, the other in tones of orange and red; 4 ft. 6 in. x 5 ft. 8 in. and 3 ft. 5 in. x 6 ft. 5 in.

Estimate: \$ 400.00 - \$ 600.00

[To Top](#)

[Back](#)

[Next](#)

## **Lots 21 - 30**



### **Lot #21: LOUIS XVI-STYLE BRASS-EDGED STEEL BUREAU PLAT**

The top with gold-tooled leather panel and outset rounded corners, above 3 frieze drawers, the one with digital lock, and a leather-lined pull-out slide at either end, on round fluted legs; 29 in. x 4 ft. 11 in. x 30 1/2 in. Provenance: Property from the collection of Muriel Karasik. Estimate: \$ 1800.00 - \$ 2200.00



### **Lot #22: PAINTED AND CUT-WOOD FIGURE OF A SEATED MAN**

Incorporating 5 conjoined cut outs, wearing stripped jacket and trousers and a hat, together with a painted ladder-back side chair with rush seat; 4 ft. 3 3/4 in. x 6 1/2 x 30 in. Provenance: Property from the collection of Muriel Karasik. Estimate: \$ 400.00 - \$ 600.00



### **Lot #23: PAIR OF CONTEMPORARY CIRCULAR BRASS-TOP CHROME LOW TABLES**

Each glass-fitted top cut with a polo or football scene, ring surround and 3 rectangular supports; 18 1/4 in., 25 1/4 in. diam. Provenance: Property from the collection of Muriel Karasik. Estimate: \$ 2000.00 - \$ 4000.00





**Lot #24: CONTEMPORARY CHROME-MOUNTED FAUX ALLIGATOR SKIN COVERED ETAGERE**

Incorporating 5 rectangular shelves on block supports joined by cross bars; 7 ft. x 36 i x 12 1/4 in. Provenance: Property from the collection of Muriel Karasik.

Estimate: \$ 1200.00 - \$ 1800.00



**Lot #25: 20TH C. BLACK GLASS-TOP CHROME PARSON'S TABLE**

The oval top above 2 shelves; 34 in. x 6 ft. x 18 in. Provenance: Property from the collection of Muriel Karasik.

Estimate: \$ 2000.00 - \$ 3000.00



**Lot #26: CHINESE SILK-EMBROIDERED OTTOMAN**

The circular seat worked with colorful flowers, above black base with maroon cord; 16 1/2 in., 39 in. diam. Provenance: Property from the collection of Muriel Karasik.

Estimate: \$ 400.00 - \$ 600.00



**Lot #27: SET OF SEVEN 20TH C. TUBULAR CHROME DINING CHAIRS**

Each curved back and dipped seat fitted with green faux leather cushion; 20 1/2 in. Provenance: Property from the collection of Muriel Karasik.

Estimate: \$ 800.00 - \$ 1200.00





**Lot #28: ART MODERNE PIER MIRROR**

The narrow ebonized and parcel-gilt frame with shaped crest enclosing 18 mirror tiles reverse painted with gilt tasseled drapery swags; 7 ft. 2 in. x 20 1/2 in. Provenance: Property from the collection of Muriel Karasik.

Estimate: \$ 800.00 - \$ 1200.00



**Lot #29: ART DECO MARQUETRY-  
INLAID WALNUT SMALL SIDE  
CABINET**

Enclosed by a pair of doors inlaid with tulip stems and other flowers and stars, above 4 base drawers with chrome pulls, on disc feet; 27 3/4 x 31 1/2 x 10 1/2 in. Provenance: Property from the collection of Muriel Karasik.

Estimate: \$ 1800.00 - \$ 2200.00



**Lot #30: AMUSING INLAID WALNUT  
AND MAPLE TEN-DRAWER  
CHIFFONIERE IN THE FORM OF A  
WOMAN**

The circular head with hinged lid, above the 10 narrow drawers, applied with arms at the sides; 6 ft. 3/4 in. x 15 1/2 x 10 in. Provenance:

Property from the collection of Muriel Karasik.

Estimate: \$ 800.00 - \$ 1200.00

[To Top](#)

[Back](#)

[Next](#)

## **Lots 31 - 40**



**Lot #31: ATTRIBUTED TO ANDREW SZOKE: MARQUETRY-INLAID BURL WALNUT SIDE CABINET**

In 3 tiers, with 2 drop fronts each inlaid with figure reserves, opening to a pair of small central doors, centering 2 drawers with stellate-inlaid circular pulls, on block feet; 4 ft. 2 1/8 in. x 4 ft. x 19 1/8 in. Provenance: Property from the collection of Muriel Karasik.

Estimate: \$ 8000.00 - \$ 12,000.00



**Lot #32: FRENCH PAINTED CAST IRON BUTLER CADDY**

Modeled as a bewhiskered butler holding a tray fitted with 4 removable dishes, on square base, impressed *Deposé* and with manufacturer's logo; 37 1/4 x 11 3/4 x 8 3/4 in. Provenance: Property from the collection of Muriel Karasik.

Estimate: \$ 600.00 - \$ 800.00



**Lot #33: 20TH C. WHITE FORMICA PEDESTAL BREAKFAST TABLE**

The circular top on drum pedestal; 28 3/4 in., 4 ft. 8 in. diam. Provenance: Property from the collection of Muriel Karasik.

Estimate: \$ 300.00 - \$ 500.00



**Lot #34: PAIR OF STRIPED CHARCOAL GRAY UPHOLSTERED SOFAS**

6 ft. 4 in. Provenance: Property from the collection of Muriel Karasik.

Estimate: \$ 1000.00 - \$ 1500.00



**Lot #34A: PAIR OF STRIPED CHARCOAL GRAY UPHOLSTERED SWIVEL ARMCHAIRS**

31 in. Provenance: Property from the collection of Muriel Karasik.

Estimate: \$ 1000.00 - \$ 1500.00



**Lot #35: 20TH C. GREEN-GLAZED BURLAP-COVERED CHEST OF DRAWERS AND MATCHING NIGHT STAND AND A MIRROR**

Containing 6 drawers with horizontal chrome pulls, the stand with a single drawer and the mirror in molded frame; 34 1/2 x 46 x 20 in., mirror: 42 1/4 x 36 in. Provenance: Property from the collection of Muriel Karasik.

Estimate: \$ 1200.00 - \$ 1500.00



**Lot #36: PHILIP AND KELVIN LAVERNE: COFFEE TABLE**

Bronze, pewter and enamel, the top engraved with mythological figures, raised on fluted legs; 17 x 50 x 36 in.

Estimate: \$ 2000.00 - \$ 4000.00



**Lot #37: GUIRARD RIVIERE: DANCING NUDE IN TURBAN**

Silvered bronze, on 6-pointed star, veined black marble base, incised signature and impressed Etling, Paris; 24 3/4 x 15 3/4 in. Provenance: Property from the collection of Muriel Karasik. Estimate: \$ 3000.00 - \$ 5000.00



**Lot #38: CAST LUCITE HEAD OF AUGUSTUS CAESAR, AFTER THE ANTIQUE**

On flared block-form base; 17 x 7 1/2 in. Provenance: Property from the collection of Muriel Karasik. Estimate: \$ 200.00 - \$ 400.00



**Lot #39: ITALIAN BRONZE WINGED CLASSICAL HEAD, AFTER THE ANTIQUE**

Impressed Del Nero on reverse of neck, fitted onto a veined gray marble socle; 13 1/2 x 23 1/2 in. Provenance: Property from the collection of Muriel Karasik. Estimate: \$ 300.00 - \$ 500.00



**Lot #40: BRONZE ACUPUNCTURE FIGURE**

Standing erect with hands at sides, pleated long hair and multiple body piercings, black veined marble base; 12 1/4 x 3 1/4 in. Provenance: Property from the collection of Muriel Karasik. Estimate: \$ 400.00 - \$ 600.00

## **Lots 41 - 50**



### **Lot # 41: ENAMELED TIN MODEL OF A SKYSCRAPER**

The 4-tiered structure composed of square windowed panels, the base with 2-level store fronts and with balconies, unmarked; the back unfinished except for base store fronts and vertical corners; 42 x 18 x 8 1/2 in. Provenance: Property from the collection of Muriel Karasik. Estimate: \$ 300.00 - \$ 500.00



### **Lot #42: CHROME-PLATED FIGURE OF A FEMALE DANCER**

Modeled with back curved and with raised arms with joined hands; 13 1/4 x 11 1/2 in. Provenance: Property from the collection of Muriel Karasik. Estimate: \$ 300.00 - \$ 500.00



### **Lot #43: ART DECO VERDIGRIS AND GILT PATINATED FIGURE OF A FEMALE NUDE**

Impressed "M" at rear of base and dated 1920, standing with head turned to left and with outstretched hands, circular base; 4 ft. 1 1/2 in. x 24 1/2 in. Provenance: Property from the collection of Muriel Karasik. Estimate: \$ 2000.00 - \$ 4000.00



**Lot #44: R. ASSA: FIGURE OF A FLAPPER**

Gilt-bronze, incised signature and C. Valsuni are perdue mark; 20 1/4 in. Provenance: Property from the collection of Muriel Karasik. Estimate: \$ 1000.00 - \$ 1500.00



**Lot #45: PAIR OF ART MODERNE WAX DISPLAY BUSTS ON MARBLE BASES, BY P. IMANS**

Each with draped bosom, head to right or left, fitted with glass eyes and lashes, one now with wig and broad-rimmed hat, the other with turban, on fleur de peche socle or brocatelle base, each signed; 27 1/2 x 16 1/2 in. and 27 1/2 x 15 in. Provenance: Property from the collection of Muriel Karasik. Estimate: \$ 2000.00 - \$ 4000.00



**Lot #46: ART DECO GILT BRONZE FIGURE OF A NUDE**

Modeled seated with head resting on raised right knee, interlaced fingers, on veined breche violette marble base, unsigned; 13 3/4 x 14 1/2 in. Provenance: Property from the collection of Muriel Karasik. Estimate: \$ 1000.00 - \$ 1500.00





**Lot #47: PAIR OF 1950'S COMPOSITION MANNEQUINS**

Each with head tilted to right, with pivoting arms and displaying a cocktail dress with faux pearl bracelet, on wood stand; 30 1/2 x 15 in.

Provenance: Property from the collection of Muriel Karasik.

Estimate: \$ 600.00 - \$ 800.00



**Lot #48: PAIR OF LENCI DESIGN POTTERY HEN-FORM CUPS**

The one with green interior, numbered 95/723, the other with pink interior, unmarked, each with incised vertical strips; 4 1/2 x 6 in.

Provenance: Property from the collection of Muriel Karasik.

Estimate: \$ 200.00 - \$ 400.00



**Lot #49: ROYAL COPENHAGEN PORCELAIN FIGURE GROUP, AFTER LENCI**

Modeled as a stylized Persian couple, he with gold apple, she seated on ground touching his hand, blue wave mark and crowned heart, initials L.T. 6/2 30 II KI., in iron red; 8 3/4 x 9 in. Provenance: Property from the collection of Muriel Karasik.

Estimate: \$ 800.00 - \$ 1200.00



**Lot #50: HAMMERED ALUMINUM  
RELIEF BUST OF A WOMAN, IN THE  
MANNER OF HAGENAUER**

The head tilted to right with applied brass  
coiffure, adjustable arms, fitted to a black  
formica pedestal; 33 x 16 1/2 in. Provenance:  
Property from the collection of Muriel Karasik.  
Estimate: \$ 2000.00 - \$ 4000.00

[To Top](#)

[Back](#)

[Next](#)

## **Lots 51 - 60**



### **Lot #51: ART MODERNE COMPOSITION DISPLAY FIGURE: "DUAL STRETCH"**

Modeled barefoot with raised arms and wearing a corset and faux pearl necklace and earrings; 4 ft. 6 in. x 15 1/2 in. Provenance: Property from the collection of Muriel Karasik.

Estimate: \$ 600.00 - \$ 800.00



### **Lot #52: TWO ART MODERNE POTTERY WALL HEADS**

The one with black loop coiffure, impressed R. Knorlein and inscribed Gimbels, the other a red head with closed eyes, stamped Handmalat Hackefoes and impressed number 438; 8 1/2 and 9 7/8 in. Provenance: Property from the collection of Muriel Karasik.

Estimate: \$ 200.00 - \$ 400.00



### **Lot #53: TWO ART MODERNE COMPOSITION WALL HEADS**

The one with green waved coif, impressed John Pearce and Reg, No. 3376, the other with green hat over gilt waved hair, unmarked; 10 and 11 1/2 in. Provenance: Property from the collection of Muriel Karasik.

Estimate: \$ 200.00 - \$ 400.00



**Lot #54: TWO ART MODERNE  
COMPOSITION WALL DISPLAY HEADS**

Each in profile wearing red or green polka dot scarf, each impressed Jon Douglas, copyright, Rd. No 3378; 18 1/4 x 10 in. and 16 x 9 in.

Provenance: Property from the collection of Muriel Karasik.

Estimate: \$ 300.00 - \$ 500.00



**Lot #55: LENCI-DESIGN PORCELAIN  
FIGURAL GROUP**

Marked Wilhelms Fild; modeled with woman seated in recamier with book and hound, restored; 6 3/4 x 7 1/2 in. Provenance: Property from the collection of Muriel Karasik.

Estimate: \$ 800.00 - \$ 1200.00



**Lot #56: TWO ART MODERNE POTTERY  
WALL HEADS**

The one with green hat and rouged cheeks, the other in vizored cap, each unmarked, together with a 1989 head, "Amy Air Ace," 9 1/2 and 8 in. Provenance: Property from the collection of Muriel Karasik.

Estimate: \$ 200.00 - \$ 400.00



**Lot #57: TWO ART MODERNE GLAZED  
POTTERY WALL DISPLAY HEADS**

The one a blonde, stamped Czechoslovakia Hand-Painted, the other with blue hood and closed eyes, unmarked; 8 and 6 1/8 in.

Provenance: Property from the collection of Muriel Karasik.

Estimate: \$ 200.00 - \$ 400.00



**Lot #58: C. HENNECKE CO.  
COMPOSITION WALL HEAD**

Modeled wearing a star-embroidered blue diaphanous head scarf, fitted with oval label "... Milwaukee, WI," 16 x 9 in. Provenance: Property from the collection of Muriel Karasik. Estimate: \$ 300.00 - \$ 500.00



**Lot #59: ART MODERNE GLAZED  
POTTERY WALL HEAD**

With auburn hair and orange scarf over turquoise blouse, unmarked; 15 x 13 in. Provenance: Property from the collection of Muriel Karasik. Estimate: \$ 300.00 - \$ 500.00



**Lot #60: TWO ART MODERNE  
COMPOSITION CASTS:  
"MARGUERITE"**

Each impressed Jon Douglas (John Pearce), Reg. No. 3377, Made in England; the one bronzed, each wearing a striped hat; 14 x 12 in. Provenance: Property from the collection of Muriel Karasik. Estimate: \$ 600.00 - \$ 800.00

[To Top](#)

[Back](#)

[Next](#)

## **Lots 61 - 70**



### **Lot #61: THREE FABRIC-CLOTHED WOOD MAQUETTES**

Variously garbed in fantasy costume studies for the Ballet Russe, on velvet or embroidery-covered ground; 10 in. Provenance: Property from the collection of Muriel Karasik.

Estimate: \$ 800.00 - \$ 1200.00



### **Lot #62: EUROPEAN SCHOOL: SET DESIGN (CLOWN PROSCENIUM)**

Watercolor, 17 x 11 3/4 in. (sight), in a shadow-box frame. Provenance: Property from the collection of Muriel Karasik.

Estimate: \$ 200.00 - \$ 400.00



### **Lot #63: EUROPEAN SCHOOL: SET DESIGN (INTERIOR)**

Watercolor, 13 3/4 x 21 in. (sight), in a shadow-box frame. Provenance: Property from the collection of Muriel Karasik.

Estimate: \$ 200.00 - \$ 400.00



### **Lot #64: EUROPEAN SCHOOL: SET DESIGN (LANDSCAPE)**

Watercolor on paper, 10 7/8 x 19 7/8 in. (sight), in a shadow-box frame. Provenance: Property from the collection of Muriel Karasik.

Estimate: \$ 200.00 - \$ 400.00





**Lot #65: EUROPEAN SCHOOL: SET DESIGN (ART NOUVEAU GARDEN)**

Watercolor on paper, 10 1/4 x 17 3/8 in., in a shadow-box frame. Provenance: Property from the collection of Muriel Karasik.

Estimate: \$ 200.00 - \$ 400.00



**Lot #66: EUROPEAN SCHOOL: SET DESIGN (FLOWERING GARDENS WITH VISTA BEYOND)**

Watercolor, 15 1/2 x 21 5/8 in. (sight), in a shadow-box frame. Provenance: Property from the collection of Muriel Karasik.

Estimate: \$ 200.00 - \$ 400.00



**Lot #67: EUROPEAN SCHOOL: SET DESIGN (VIEW THROUGH THE PROSCENIUM ARCH)**

Watercolor, 13 x 17 1/4 in. (sight), in a shadow-box frame. Provenance: Property from the collection of Muriel Karasik.

Estimate: \$ 200.00 - \$ 400.00



**Lot #68: EUROPEAN SCHOOL: SET DESIGN (PERISTYLE)**

Watercolor on paper, 10 1/4 x 17 1/2 in., in a shadow-box frame. Provenance: Property from the collection of Muriel Karasik.

Estimate: \$ 200.00 - \$ 400.00



**Lot #69: EUROPEAN SCHOOL: SET  
DESIGN (PURPLE PALMS)**

Watercolor and glitter on paper, 8 5/8 x 12 5/8 in., in a shadow-box frame. Provenance:

Property from the collection of Muriel Karasik.

Estimate: \$ 200.00 - \$ 400.00



**Lot #70: EUROPEAN SCHOOL: SET  
DESIGN (OCEAN FLOOR)**

Watercolor, 9 7/8 x 16 3/4 in. (sight) in a shadow-box frame. Provenance: Property from the collection of Muriel Karasik.

Estimate: \$ 200.00 - \$ 400.00

[To Top](#)

[Back](#)

[Next](#)

## **Lots 71 - 80**



**Lot #71: MARCEL DEBUT (1865-1933):  
"LES PAVOTS"**

Bronze with impressed signature: modeled as the bust of an art nouveau maiden with poppies in her long flowing hair, the waisted pedestal with inscribed title; 28 x 17 1/2 x 10 in.

Estimate: \$ 2000.00 - \$ 4000.00



**Lot #72: SAUL BALZERMAN (1889-1957):  
"THE ITALIAN WOMAN"**

Bronze, 6 1/4 x 3 1/4 x 3 1/2 in., with metal base, 7 1/2 x 5 1/8 x 6 in.

Estimate: \$ 1000.00 - \$ 1500.00



**Lot #73: AFTER CHAIM GROSS:  
"MOTHER & CHILD"**

Bronze, 8 5/8 x 5 1/2 x 5 in., signed, numbered 41/47 and with foundry mark; on a mitred wood base (damaged).

Estimate: \$ 800.00 - \$ 1200.00



**Lot #74: JOACHIM BERTHOLD (1917-1990): UNTITLED (ABSTRACT BIRD)**

Patinated bronze hollow-cast sculpture, 4 1/2 x 12 1/2 x 6 in., signed and numbered 1/9, on a black lacquered base. Note: The sculpture is weighted internally.

Estimate: \$ 300.00 - \$ 500.00



**Lot #75: HENRY ARNOLD (b. 1920): FIGURE OF A WOMAN WITH BIRD**

Bronze, 12 3/4 x 3 3/8 in., on bronze base, signed and with foundry mark of Susse Frères etrs, Paris.

Estimate: \$ 700.00 - \$ 900.00



**Lot #76: VARUJAN BOGHOSIAN (B. 1926): NAPOLEON**

Bronze, 14 x 21 x 5 in. on a 8 x 9 x 3 1/2 in. black granite base. Note: Purchased from the artist.

Estimate: \$ 1000.00 - \$ 3000.00



**Lot #77: WILL HORWITT (1934-1985): UNTITLED, 1966**

Bronze with dark blue patina, 10 x 31 x 11 1/2 in., signed, dedicated, dated, numbered 1/1 and stamped with foundry mark MAF NY.

Estimate: \$ 1000.00 - \$ 2000.00



**Lot #78: CONTEMPORARY BRONZE**

Initialed; 12 1/2 x 14 x 18 in.

Estimate: \$ 200.00 - \$ 400.00



**Lot #79: ATTRIBUTED TO ERNEST  
NEIZVESTNY: ABSTRACT FIGURE**

Bronze, 24 x 12 x 13 1/2 in., signed E. Neiz and  
copyrighted, ed. 1/9.

Estimate: \$ 1000.00 - \$ 1500.00



**Lot #80: LATE 19TH C. SCHOOL: SUTRO  
BATHS, SAN FRANCISCO, CALIFORNIA**

Color lithograph in 4 joined panels, approx. 72  
x 79 1/2 in. Provenance: Property from the  
collection of Muriel Karasik.

Estimate: \$ 10,000.00 - \$ 15,000.00

[To Top](#)

[Back](#)

[Next](#)

## **Lots 81 - 90**



**Lot #81: AFTER PIERRE BONNARD (1867-1947): RUE VU D'EN HAUT**

Color print on paper, 15 x 9 in. (image).

Estimate: \$ 1000.00 - \$ 2000.00



**Lot #82: AFTER MAX WEBER: STILL LIFE WITH FRUIT**

Print on paper, 13 x 16 1/2 in. (sight), signed in the plate, Lexington Art Gallery label on verso.

Estimate: \$ 700.00 - \$ 900.00



**Lot #83: AFTER JOAN MIRO (1893-1983): ABSTRACT COMPOSITION**

Colored lithograph on folio page, 11 1/2 x 1 3/4 in. (sight), initialed lower right, edition 95/100 lower left.

Estimate: \$ 500.00 - \$ 1000.00





**Lot #84: AFTER JOAN MIRO (1893-1983):  
"IN MY GARDEN"**

Colored lithograph, 8 1/2 x 8 1/2 in. (sight),  
signed lower right and with Dain/Schiff label on  
verso.

Estimate: \$ 1000.00 - \$ 2000.00



**Lot #85: AFTER PICASSO:  
"SALTIMBANQUE AUX REPOS"**

Drypoint on paper, 4 5/8 x 3 1/4 in. (plate,  
sight).

Estimate: \$ 400.00 - \$ 600.00



**Lot #86: ATTRIBUTED TO MARIE  
LAURENCIN: GIRL ON HORSEBACK**

Pencil and colored pencil on paper, 9 3/8 x 7 1/2  
in. (sight).

Estimate: \$ 2000.00 - \$ 4000.00



**Lot #87: ATTRIBUTED TO RENÉ  
MAGRITTE: LA ROSE ET LE LIVRE  
AND LA ROSE ET LE VISAGE**

Pencil on paper, 3 7/8 x 5 5/8 in.

Estimate: \$ 1500.00 - \$ 2500.00



**Lot #88: SATURNINO HERRAN (1887-1918): PROFILE**

Watercolor, 10 x 9 1/2 in. (lower right quadrant gone), raised lower left, inscribed Mex and dated 1918; multiple museum labels on verso. Ex collection Col. Mario & Adriana Garcia Flores.

Estimate: \$ 800.00 - \$ 1200.00



**Lot #89: AFTER CHAGALL: THE ACROBAT**

Etching on paper, 15 3/4 x 11 3/4 in. (image, sight).

Estimate: \$ 1000.00 - \$ 2000.00



**Lot #90: AFTER PICASSO: CERAMIC PLATE**

8 in. diam., stamped Madoura Plein Feu and Empreinte Originale de Picasso.

Estimate: \$ 800.00 - \$ 1200.00

[To Top](#)

[Back](#)

[Next](#)

## **Lots 91 - 100**



### **Lot #91: AFTER PICASSO :CERAMIC PLATE**

Inscribed underglaze, 2 iene version/edition Picasso and stamp Madoura Plein Feu and Edition Picasso; 12 1/2 x 15 1/4 in.

Estimate: \$ 3000.00 - \$ 5000.00



### **Lot #92: AFTER PICASSO: CERAMIC PLATE**

Stamped madoura Plein Feu and Edition Picasso; 12 1/4 x 15 in.

Estimate: \$ 3000.00 - \$ 5000.00



### **Lot #93: AFTER PICASSO: CERAMIC PLATE**

Stamped Madoura Plein Feu and Edition Picasso and numbered 199/200; 12 1/2 x 15 3/8 in.

Estimate: \$ 3000.00 - \$ 5000.00



### **Lot #94: MAN RAY (1890-1976): PORTRAIT OF PATTI BIRCH**

Black and white photograph mounted on board, signed Man Ray in pencil on the mount; 9 3/4 x 7 5/8 in. Provenance: Property from the collection of Patti Cadby Birch.

Estimate: \$ 2000.00 - \$ 3000.00



**Lot #95: ATTRIBUTED TO MAN RAY:  
PORTRAIT OF A STANDING FEMALE  
FIGURE**

Black ink on gray-toned paper, stamped MR and with notation lower left in pen "To Peter P. P.C. Man Ray, June 5, 1947." Provenance: Property from the collection of Patti Cadby Birch.

Estimate: \$ 1200.00 - \$ 1800.00



**Lot #96: EUGENE CARRIERE (1849-1906):  
UNTITLED (LANDSCAPE)**

Oil on canvas, 8 3/4 x 9 5/8 in., signed lower right. Provenance: Property from the collection of Patti Cadby Birch.

Estimate: \$ 500.00 - \$ 700.00



**Lot #97: FOLLOWER OF KASIMIR  
MALEVICH: STYLIZED WOMAN**

Watercolor on paper, 8 3/16 x 9 5/16 in., bearing signature lower left and dated 32, inscribed illegibly in cyrillic on verso.

Estimate: \$ 500.00 - \$ 700.00



**Lot #98: WILLIAM VALENTINE  
SCHEVILL (1864-1951): THE ESTHETE**

Oil on panel, 39 1/2 x 25 1/2 in., signed upper left. Provenance: Property from the collection of Muriel Karasik.

Estimate: \$ 3000.00 - \$ 5000.00



**Lot #99: CLEMENTINE HELENE DUFAU  
(1869-1937): MADEMOISELLE AVEC  
UNE RAQUETTE DE TENNIS**

Oil on canvas, 29 x 24 in., relined, signed lower left. Provenance: Property from the collection of Muriel Karasik.

Estimate: \$ 8000.00 - \$ 12,000.00



**Lot #100: JACOB EPSTEIN (1880-1959):  
TWO FEMALE NUDES**

Pencil on paper, 19 x 21 in., (sight), signed lower right.

Estimate: \$ 1000.00 - \$ 2000.00

[To Top](#)

[Back](#)

[Next](#)