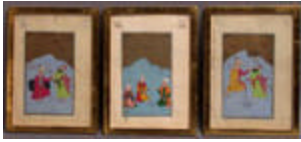


# Lots 101 - 110



## **Lot #101:** THREE INDIAN MINIATURES

**Description:** Hand-colored and mounted under glass in gilded frames(one glass missing).  
9 1/4 inches x 6 3/4 inches (framed)  
From the Estate of Frederick W. Hughes  
Estimate: \$75 - \$125



## **Lot #102:** TWO INDIAN MINIATURES

**Description:** Hand-colored, mounted and framed under glass. 9 1/2 inches x 6 3/16 inches (framed)  
From the Estate of Frederick W. Hughes  
Estimate: \$75 - \$100



## **Lot #103:** TWO INDIAN MINIATURES

**Description:** Hand-colored, mounted and framed under glass. 12 1/2 inches x 8 5/8 inches (framed)  
From the Estate of Frederick W. Hughes  
Estimate: \$100 - \$150



## **Lot #104:** A CAST IRON UMBRELLA RACK

**Description:** Of aesthetic form signed "Falkirk" on reverse 29 1/2 inches high x 15 inches wide x 8 inches deep  
Estimate: \$300 - \$400



## **Lot #105:** GEORGE III SILVERED STEEL SERPENTINE FRONTED FIREPLACE FENDER

**Description:** Pierced with fluting and vitruvian scrollwork 24 3/4 inches long  
From the Estate of Frederick W. Hughes  
Estimate: \$300 - \$500



## **Lot #106:** GROUP OF BRASS HEARTH EQUIPMENT

**Description:** Comprising four fire tools and stand and a brass-mounted wire mesh screen.  
Screen: 31 1/2 inches high x 27 inches wide (closed)  
Estimate: \$75 - \$125



**Lot #107: LOUIS XVI STYLE BRASS FIRE SCREEN**

**Description:** Forming a pierced fan-shape screen with crown finial; together with a Renaissance style brass door bell with griffin holder and Latin inscription. Screen: 21 inches high  
Estimate: \$200 - \$300



**Lot #108: GROUP OF FIVE TURNED WOOD TABLE ARTICLES**

**Description:** Comprising a pair of 13 1/4 inch candlesticks, a pair of 8 inch rosewood ovoid vases with copper liners and a 10 inch gavel with brass-plated ring.  
Estimate: \$120 - \$180



**Lot #109: THREE PANEL SCREEN**

**Description:** With brass repousse borders centering tapestry panels. 64 inches high x 28 1/2 inches wide  
Estimate: \$300 - \$500



**Lot #110: SET OF FOUR BIEDERMEIER WALNUT SIDE CHAIRS**

**Description:** Each with curved top rail with lobed lower edge, horizontal splat, shaped seat and square, tapered legs  
Estimate: \$2500 - \$3500

---

**To Top**



## Lots 111 - 120



**Lot #111: SET OF FOUR GEORGE III CARVED MAHOGANY SIDE CHAIRS**

**Description:** Each carved and shaped cresting rail above a carved and pierced vase shaped back splat above a slip seat raised on square legs  
Estimate: \$2000 - \$3000



**Lot #112:** REGENCY EBONIZED,  
PAINTED & PARCEL-GILT WOOD CANED  
SEAT OPEN ARMCHAIR

**Description:** The flat crestring rail supporting an astrical shaped back splat supported by a caned seat and raised on turned legs

Estimate: \$1000 - \$1500



**Lot #113:** PAIR OF LOUIS XV/XVI  
TRANSITIONAL CARVED AND PAINTED  
CANED SEAT SIDE CHAIRS

**Description:** The arched crestring rail above a caned back and seat raised on cabriole legs

Estimate: \$1500 - \$2000



**Lot #114:** ARTS AND CRAFTS OAK SIDE  
CHAIR

**Description:** The tenoned top rail above horizontal splat, the nailed seat on block legs joined by side splats.

Estimate: \$200 - \$400



**Lot #115:** ART NOUVEAU CARVED OAK  
SIDE CHAIR

**Description:** The open work back with incised stylized floral stem, the shaped seat on tapered legs.

Estimate: \$150 - \$200



**Lot #116:** AMERICAN BRASS DOUBLE  
BEDSTEAD

**Description:** With tubular rails and spindles. Height of headboard 5 feet 2 inches, width 4 feet 1 inch, length approximately 6 feet 10 inches.

Estimate: \$300 - \$500



**Lot #117: AMERICAN FAUX-PAINTED SLEIGH BED**

**Description:** The head and footboards with inset upper corners, shaped sides, painted with bamboo borders 4 feet 3 inches high x 6 feet 5 1/2 inches long x 41 1/2 inches wide

Estimate: \$1200 - \$1800



**Lot #118: BIEDERMEIER BIRCH AND WALNUT VENEERED CHEST OF DRAWERS**

**Description:** The rectangular top above three drawers inlaid with shield-shape key escutcheons, raised on block feet. 33 1/2 inches high x 45 inches wide x 23 1/2 inches deep

Estimate: \$2000 - \$3000



**Lot #119: AUSTRIAN RENAISSANCE STYLE CARVED OAK CREDENZA**

**Description:** The superstructure with fruit-carved cresting above a shelf and an oval mirror plate; the rectangular marble top lower part containing two frieze drawers and a pair of doors with fruit and cabochon pulls, raised on a plinth. 7 feet 4 inches x 45 inches wide x 18 inches deep

Estimate: \$2500 - \$3500



**Lot #120: GEORGE I INLAID WALNUT CHEST-OF-DRAWERS**

**Description:** The veneered top above a case fitted with two short and two long drawers raised on bracket feet 31 inches high x 37 1/2 inches wide x 22 inches deep

Estimate: \$3000 - \$5000

---

**To Top**



**Lots 121 - 130**



**Lot #121: GEORGE III SINGLE DOOR  
MAHOGANY BEDSIDE CUPBOARD**

**Description:** The top fitted with a splash rail above a single door raised on four square inlaid tapering legs. 34 inches high x 15 inches wide x 13 1/2 inches deep

Estimate: \$800 - \$1200



**Lot #122: ART MODERNE STYLE  
WALNUT CORNER CUPBOARD**

**Description:** Enclosed by a door with vertical pole handle, recessed base. 38 1/2 inches high x 30 1/2 inches wide x 22 3/4 inches deep

Estimate: \$100 - \$150



**Lot #123: GERMAN ART DECO  
BURRWOOD SIDE CABINET**

**Description:** The rectangular top above three drawers and recessed ebonized base.

22 1/4 inches high x 20 1/4 inches wide x 21 1/4 inches deep

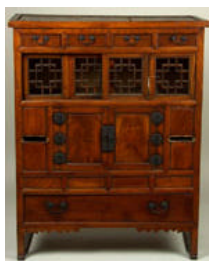
Estimate: \$200 - \$300



**Lot #124: ART DECO CHROME-  
MOUNTED ROSEWOOD VENEERED BAR  
CABINET**

**Description:** The striated black marble top above an open section and a door, raised on ebonized arch base 41 inches high x 47 inches wide x 16 1/4 inches deep

Estimate: \$700 - \$900



**Lot #125: KOREAN ELMWOOD CHEST**

**Description:** The front containing three shallow frieze drawers above two pairs of sliding fret doors, the lower part with two doors above a base drawer. 4 feet 1 1/2 inches high x 39 1/2 inches wide x 18 1/4 inches deep

Estimate: \$400 - \$600





**Lot #126: PAINTED PINEWOOD CORNER CUPBOARD**

**Description:** With three graduated bow-fronted shelves on waved supports, above a fielded paneled door, raised on bun feet. 5 feet 5 1/2 inches high x 28 3/4 inches high x 24 inches deep  
Estimate: \$400 - \$600



**Lot #127: CONTINENTAL OAK COFFER**

**Description:** The hinged top above a paneled front raised on bun feet. 21 inches high x 51 1/2 inches wide x 21 1/2 inches deep  
Estimate: \$500 - \$700



**Lot #128: "A WINTER IN THE COUNTRY"**

**Description:** Signed and dated "D. C. Grose. 1871". Oil on canvas. 24 inches x 36 inches  
Estimate: \$2000 - \$3000



**Lot #129: IDYLLIC LANDSCAPE WITH FIGURES**

**Description:** Oil on canvas, 19th c., unsigned, unframed. 26 inches x 36 inches  
From the Estate of Frederick W. Hughes  
Estimate: \$900 - \$1200



**Lot #130: PRIMITIVE PAINTING**

**Description:** Oil on canvas, signed and dated lower right "M. Persson 1929," unframed.  
14 1/4 inches x 22 inches  
From the Estate of Frederick W. Hughes  
Estimate: \$125 - \$175

---

**To Top**



**Lots 131 - 140**



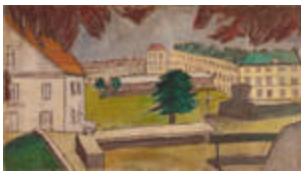
**Lot #131: THREE ITEMS ON PAPER**  
**Description:** Watercolor and gouache of a European coastal scene (matted and framed under glass); watercolor en grisailles of farmers (matted and framed under glass) and a double sided graphite drawing (church/windmill), unframed. Various sizes, the largest, 14 1/2 inches x 17 inches (framed)  
 From the Estate of Frederick W. Hughes  
 Estimate: \$150 - \$250



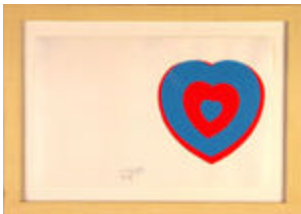
**Lot #132: PROFILE OF A BEARDED MAN**  
**Description:** Oil on canvas, signed lower left "Parrish [Stephen Parrish, 1846 - 1938]," not framed. 10 inches x 7 7/8 inches  
 From the Estate of Frederick W. Hughes  
 Estimate: \$150 - \$250



**Lot #133: MOUNTAIN VIEW WITH LAKE IN FOREGROUND.**  
**Description:** Possibly upstate New York, oil on board, within a liner and gilt frame bearing a picture framers label on reverse. size of frame 8 1/2 inches high x 10 1/2 inches wide  
 Estimate: \$400 - \$600



**Lot #134: SOUTHERN EUROPEAN TOWNSCAPE**  
**Description:** Oil on canvas, unsigned. 20 inches x 36 inches, unframed.  
 From the Estate of Frederick W. Hughes  
 Estimate: \$100 - \$200



**Lot #135: FLUTTERING HEARTS**  
**Description:** Color silkscreen print on paper, signed, dated and numbered lower left "Marcel Duchamp/Stockholm/1961/77-125." 12 5/8 inches x 20 1/8 inches (sheet, sight)  
 From the Estate of Frederick W. Hughes  
 Estimate: \$700 - \$900



**Lot #136: "LOOKING AT MARCEL"**

**Description:** Black glazed pottery vase by Ron Cooper, underside with impressed signature, title, date of 1988, numbered 19/75.

6 3/8 inches high x 5 1/4 inches wide  
From the Estate of Frederick W. Hughes  
Estimate: \$75 - \$125



**Lot #137: "COLLAGE WITH BIG BIRDS AND LITTLE BIRDS"**

**Description:** Oil and cutouts on cardboard, circa 1970 by Edward Patrick Byrne (1877 - 1974). Provenance: Kronen Gallery

19 1/2 inches x 23 inches (framed)  
From the Estate of Frederick W. Hughes  
Estimate: \$200 - \$300



**Lot #138: "AGONY IN THE GARDEN - REPRISE"**

**Description:** Oil on masonite, initialled and dated lower right MS [Mary Sherwood] 85" in a painted wooden frame.

Provenance: Clark Gallery, Lincoln, Mass.  
8 inches x 9 7/8 inches (framed)  
From the Estate of Frederick W. Hughes  
Estimate: \$175 - \$225



**Lot #139: "#23"**

**Description:** Acrylic on canvas, signed and titled on the stretched canvas verso "Stanley Twardowicz," unframed. A note from the artist to Fred Hughes is stapled to the stretcher and dated "Dec. 1993." 11 inches x 20 inches

From the Estate of Frederick W. Hughes  
Estimate: \$125 - \$225





**Lot #140:** "ROSABELLE, BELIEVE/  
MOVEMENT WREATH - 1 - B"

**Description:** Acrylic on canvas, titled  
and signed on the canvas verso  
"[copyright] 1988 Thomas Woodruff" in a  
hand-painted frame.

Provenance: P.P.O.W

17 1/2 inches x 13 1/2 inches (framed)

From the Estate of Frederick W. Hughes

Estimate: \$400 - \$600

---

**To Top**



## Lots 141 - 150



**Lot #141:** "ELF FOOTWEAR OR SCIENCE  
FAIR"

**Description:** Oil on linen, titled, signed  
and dated on the stretched linen verso  
"Thomas Woodruff 1986" in a painted  
wooden frame.

12 inches x 14 inches (framed)

From the Estate of Frederick W. Hughes

Estimate: \$300 - \$500



**Lot #142:** "THE LETTER"

**Description:** Photograph, signed in  
margin in ink Deborah Turbeville and  
dated Setpember 10, 1988, matted and  
framed; together with cross stitch  
sampler.

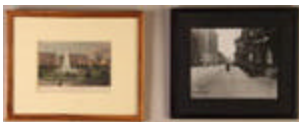
Photo: Framed 13 1/2 inches x 17 1/2  
inches

Estimate: \$100 - \$200



**Lot #144: TWO ARCHITECTURAL ELEVATIONS**

**Description:** Both with hand-coloring done for Barklie Henry Esq., Old Westbury L.I., together with an interior rendering of the "Dramatic Club Room - Williston Academy - Easthampton Mass.," all three framed under glass. 14 inches x 24 inches (framed elevation) From the Estate of Frederick W. Hughes Estimate: \$60 - \$80



**Lot #145: TWO NEW YORK CITY-RELATED ITEMS**

**Description:** The first, a colored engraving of Union Park in the 19th c.; the second, a black and white photograph dated and identified as "4-5-31/Lexington Ave - W.S./90th St. South" by Frank S. Savastano. Both are matted and framed under glass. From the Estate of Frederick W. Hughes Estimate: \$150 - \$200



**Lot #146: INDUSTRIAL SCENE WATERCOLOR ON PAPER, MATTED AND FRAMED**

**Description:** Signed lower right, John Manship. John Paul Manship, born NYC 1927. 23 1/4 inches x 27 1/2 inches (of frame) Estimate: \$600 - \$800



**Lot #147: "ART ET INDUSTRIE"**

**Description:** Ink and gouache on paper, signed lower left "Erté" (Romain de Tiroff, 1892 - 1990), matted and framed under plexiglass. Provenance: Sonnabend Gallery. 11 1/2 inches x 9 1/2 inches (sight) From the Estate of Frederick W. Hughes Estimate: \$1500 - \$2000



**Lot #148: HARPER'S BAZAAR COVER**

**Description:** Gouache on paper, signed lower right "Erté" (Romain deTirtoff, 1892 - 1990), matted and framed under plexiglass. Provenance: Sonnabend Gallery. 12 3/4 x 9 1/2 (sight)  
From the Estate of Frederick W. Hughes  
Estimate: \$1500 - \$2000



**Lot #149: ART DECO STATUE**

**Description:** Cast in bronze, signed "M Sain" in the base with a foundry mark. 34 inches x 17 inches x 6 1/2 inches  
From the Estate of Frederick W. Hughes  
Estimate: \$1800 - \$2200



**Lot #150: CECIL BEATON COSTUME DESIGN**

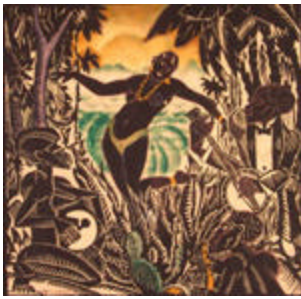
**Description:** Ink on paper, signed lower right, matted and framed under glass. Ex Warhol Collection. 11 inches x 5 7/8 (sight)  
From the Estate of Frederick W. Hughes  
Estimate: \$500 - \$700

---

[To Top](#)



**Lots 151 - 160**



**Lot #151: DANCER AND MUSICIANS**

**Description:** Color woodblock print on paper with heightened color, signed lower left "ADROESBEKE (?)," matted and framed under glass.

11 inches x 11 1/8 inches (sight)

From the Estate of Frederick W. Hughes

Estimate: \$75 - \$125



**Lot #152: NIGHTCLUB SCENE**

**Description:** Mixed media on cloth, framed, unsigned. 40 inches x 27 3/8 inches (framed)

From the Estate of Frederick W. Hughes

Note : This work was listed in the Hughes art collection documents as "Cotton Club, circa 1920, by Thelma Fraser Wright."

Estimate: \$500 - \$700



**Lot #152A: "LE TUMULTE NOIR" BY PAUL COLIN**

**Description:** A book that chronicles Paris night life circa 1918 - 1928 in colorplate illustrations; unbound and framed. 20 pieces are double sided; 5 are not. 24 measure 24 inches x 17 3/8 inches (framed); one is 24 inches x 30 inches framed)

From the Estate of Frederick W. Hughes

Estimate: \$1000 - \$1500



**Lot #153: GROUP OF THREE BACCARAT MOLDED CLEAR GLASS OBELISKS**

**Description:** Comprising two small and one large

25 1/2 inches high

Estimate: \$700 - \$900



**Lot #154: PAIR OF FRENCH BACCARAT  
MOLDED BLACK GLASS OBELISKS**

**Description:** 10 inches high

Estimate: \$300 - \$500



**Lot #155: SET OF TWELVE ENGLISH  
CUT GLASS WINE RINSERS**

**Description:** The tapered faceted bowls with double spouted rims; together with a pair of cut-glass 10 1/2 inch stemmed urns and covers with faceted bell-form bowls and covers with prism knobs.

Height of rinsers: 4 inches and 6 inches

Estimate: \$250 - \$300



**Lot #156: PAIR OF VERLYS ART  
MODERNE GLASS VASES**

**Description:** "The Four Seasons" each inscribed with 1940 copyright and one signed Carl Shnutz, each tapered bowl with relief acid finish figures of the seasons.

8 1/8 inches high x 5 inch diameter

Estimate: \$200 - \$300

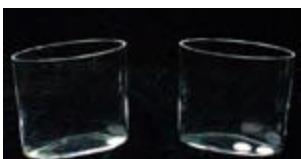


**Lot #157: GROUP OF GLASS TABLE  
ARTICLES**

**Description:** Comprising a pair of cut ovoid decanters and stoppers, and engraved 8 1/4 inch ring neck decanter, a 5 1/2 inch engraved bell-form vase, Bohemian stag engraved ruby flash finger bowl and stand, pair of millefiori 5 1/4 inch scent bottles and stoppers, Murano "Cactus"

paperweight, "Octopus" paperweight, 4 inch clear bowl and two Orrefors orange dishes.

Estimate: \$175 - \$270



**Lot #158: PAIR OF FINNISH ART GLASS  
VASES**

**Description:** Each engraved "Tapis Wirkala"; the clear bowls of narrow oval cross section.

6 1/2 inches high x 6 1/2 inches wide

From the Estate of Frederick W. Hughes

Estimate: \$100 - \$150





**Lot #159:** PAIR OF ENGLISH CUT EMERALD GREEN GLASS SMALL DECANTERS AND STOPPERS

**Description:** Each cut with flutes and swags, faceted pear-form stoppers. 10 1/2 inches high  
From the Estate of Frederick W. Hughes  
Estimate: \$125 - \$175



**Lot #160:** GROUP OF HAWKES CUT GLASS TABLE ARTICLES

**Description:** Comprising nine water goblets, eight white wines and seven finger bowls, with oval, dot and flute bands, some pieces marked.  
From the Estate of Frederick W. Hughes  
Estimate: \$250 - \$350

[To Top](#)



## Lots 161 - 170



**Lot #161:** ENAMEL BOX WITH GILT HIGHLIGHTS

**Description:** In the form of a coach. 2 inches high x 3 inches wide x 2 inches deep  
Estimate: \$1000 - \$1500



**Lot #162:** GROUP OF SIX ENGLISH CERAMIC TABLE ARTICLES

**Description:** Comprising: a pair of Wedgwood 10 3/4 inch shell-form creamware dishes; a Wedgwood 8 5/8 inch shell-form creamware dish; a Wedgwood 8 5/8 inch shell-form creamware dish; a Wedgwood 8 5/8 inch shell-form creamware dish; a Wedgwood 8 5/8 inch shell-form creamware dish; a Wedgwood 8 5/8 inch shell-form creamware dish.



**Lot #163:** THREE ENGLISH STONEWARE DESSERT ARTICLES

**Description:** Comprising: a 12 1/4 inch stemmed compote, an 8 3/4 inch rectangular plate and an 8 1/2 inch shell-form creamware dish.



**Lot #163: THREE ENGLISH STONEWARE DESSERT ARTICLES**

**Description:** Comprising: a 12 1/4 inch stemmed compote, an 8 3/4 inch rectangular plate and an 8 1/2 inch shell form dish, all with gilt waved rims and molded grape cluster handles.  
From the Estate of Frederick W. Hughes  
Estimate: \$100 - \$150



**Lot #164: ENGLISH TRANSFER-DECORATED PLATTER IN THE FAMILLE ROSE PALETTE.**

**Description:** With oval chinoiserie figural scene on iron red border spaced by floral reserves. 13 inch length  
From the Estate of Frederick W. Hughes  
Estimate: \$80 - \$120



**Lot #165: ENGLISH RELIEF-MOLDED STONEWARE DESSERT SERVICE**

**Description:** With vinework borders enclosing flowerheads and acanthus leaf centers, comprising nine 8 1/4 inch plates, two-handled sauce tureen, cover and stand, ten inch rectangular stemmed compote, an eight inch square dish, and three 10 1/2 inch shell form dishes.  
From the Estate of Frederick W. Hughes  
Estimate: \$250 - \$350



**Lot #166: GROUP OF WEDGWOOD TRANSFER-DECORATED CREAMWARE ARTICLES**

**Description:** In the "Begonia" pattern. Comprising ten 10 1/4 inch plates, two 9 1/2 inch plates, 22 1/4 inch well and tree platter on bracket feet, a 16 1/2 inch and a 17 1/2 inch platter.  
From the Estate of Frederick W. Hughes  
Estimate: \$250 - \$350



**Lot #167: STAFFORDSHIRE "FAMILLE ROSE" CHAMFERED RECTANGULAR PLATTER**

**Description:** Decorated with figures in a garden within a border with iris and peony blooms. 17 1/4 inches long  
From the Estate of Frederick W. Hughes  
Estimate: \$80 - \$120



**Lot #168:** VIENNA IVORY - GLAZED  
PORCELAIN TEA POT

**Description:** Of squat spherical form, with bracket spout, s-scroll handle, the cover with the head of a Chinese girl with braid; underglaze blue crowned beehive mark above "Wien" and "Made in Austria".

5 1/2 inches high x 11 inches wide  
Estimate: \$100 - \$150



**Lot #169:** GROUP OF WEDGWOOD  
JASPERWARE TEA ARTICLES

**Description:** Comprising: a squat spherical teapot, matching tea pot, four cups and saucers, handleless cup and stand and a cream jug together with a set of eight Johnson Brothers "Pareek" demitasse cups and saucers.

Estimate: \$100 - \$150



**Lot #170:** SET OF SIX CROWN DERBY  
PORCELAIN SOUP PLATES

**Description:** With orange crowned D mark and number "22"; each border embossed with c-scroll foliage and painted with berries and leaves, gilt pendant cavetto. 10 inches diameter  
Estimate: \$200 - \$300

---

**To Top**



## Lots 171 - 180



**Lot #171:** MASONS IRONSTONE  
COVERED SERVING DISH

**Description:** Impressed in interior "stone china 63". 8 inches high x 13 inches wide x 11 inches deep  
Estimate: \$150 - \$250



**Lot #173: SET OF TWELVE CAULDON'S CHINA DINNER PLATES**

**Description:** 10 3/8 inch diameter  
Estimate: \$200 - \$300



**Lot #174: GROUP OF CERAMIC TABLE ARTICLES**

**Description:** Comprising: a pair of Bennington Potteries 8 inch square tiles; a Wedgwood shell-shape 11 inch plate; a Wedgwood pictorial plate, "Marble Quarrying" after Clare Leighton; a French 8 1/4 inch yellow-ground dish, retailed by Tiffany & Co.; and eight Burgess & Leigh 7 1/2 inch "Pictorial Britain" transfer decorated blue and white dishes.  
Estimate: \$80 - \$120



**Lot #175: ENGLISH LUSTREWARE PITCHER**

**Description:** The sky-blue ground relief molded with putti; together with a pair of modern Leedsware creamers with double twist handles and a pair of modern Portmerion Parian creamers.  
4 1/4 inches to 5 1/4 inches high  
From the Estate of Frederick W. Hughes  
Estimate: \$70 - \$90



**Lot #176: CHINESE EXPORT PORCELAIN TEAPOT**

**Description:** The tapered cylindrical body with handle and spout decorated all over with flowers  
10 1/2 inches high  
Estimate: \$200 - \$400



**Lot #177: CHINESE EXPORT TOBACCO  
PATTERN PORCELAIN SERVING DISH**

**Description:** The scalloped edge  
painted with floral motif.

Provenance: Elinor Gordon, Villanova, PA

Estimate: \$600 - \$800



**Lot #178: CHINESE SPECKLED GREEN-  
GLAZED BOTTLE FORM VASE**

**Description:** Relief molded with a fawn  
dragon, underglaze blue six character  
reign mark 7 3/8 inches high

From The Estate of Frederick W. Hughes

Estimate: \$150 - \$200



**Lot #179: CHINESE BLUE AND WHITE  
PORCELAIN YEN-YEN VASE.**

**Description:** Of double beaker form,  
painted with figures in garden with  
pavillions and a bridge.

21 3/4 inches x 10 inch diameter

Estimate: \$200 - \$300



**Lot #180: ASSEMBLED PARIS  
PORCELAIN IVORY - GLAZED PART  
DINNER SERVICE**



**Description:** All with gilt bands, comprising: thirteen 9 1/2 inch plates, eleven 9 1/2 inch soup plates, fourteen 7 3/4 inch plates, fourteen 7 inch plates, 5 cups, eleven saucers, two 12 1/4 inch two handled tureens with covers, one 9 inch two handled tureen (no cover), two octagonal cake plates, two 8 3/4 inch stemmed compotes, three platters, lengths 15 1/2 inches, 17 3/4 inches and 20 inches, one gravy boat and stand; together with a Wedgwood coffee pot, a Spode covered sugar bowl and a Schwarzburg creamer.  
Estimate: \$300 - \$500

---

**To Top**



## Lots 181 - 190



**Lot #181: PARIS PORCELAIN TRIPOD  
CUP AND SAUCER**

**Description:** Together with a matching cup and saucer; a Paris porcelain faceted footed bowl and a jardiniere; and a bisque 11 1/4 inch bust.  
From the Estate of Frederick W. Hughes  
Estimate: \$150 - \$250



**Lot #182: GERMAN PORCELAIN LARGE VASE AND COVER**

**Description:** 23 inches high  
Estimate: \$100 - \$150



**Lot #183: GERMAN PAINTED PORCELAIN SOUP TUREEN by Meisen**

**Description:** 8 inches high x 14 inches wide  
Estimate: \$200 - \$400



**Lot #184: CONTINENTAL PAINTED PORCELAIN COVERED VEGETABLE DISH**

**Description:** Slightly domed top with gilt floral finial opening to a crowned cipher.  
5 1/2 inches high x 13 inches wide  
Estimate: \$400 - \$400



**Lot #185: PAIR OF FRENCH FAIENCE ARMORIAL PLATES, early 20th Century**

**Description:** 10 inches wide  
Estimate: \$300 - \$500



**Lot #186: AMERICAN SILVER-PLATED SERVING PLATTER**

**Description:** By Towle, the oval floral cast rim centered by a well-and-tree platter and two crescent shape covers.  
Length 21 3/4 inches  
Estimate: \$100 - \$150



**Lot #187: TWO SILVER SPOONS**

**Description:** Comprising a Tiffany & Co. monogrammed combination tea and tablespoon and an Italian horn-handled sugar spoon; together with an English silver-plated thirteen inch punch ladle.  
From the Estate of Frederick W. Hughes  
Estimate: \$30 - \$50



**Lot #188: FEDERAL SILVER HELMET-FORM CREAMER**

**Description:** With beaded rim, script initials, s-form handle and square foot, unmarked. 6 inches high  
From the Estate of Frederick W. Hughes  
Estimate: \$150 - \$200



**Lot #189: AMERICAN SILVER RESIST GLASS PITCHER**

**Description:** By Alvin Silver Co., the flared cylindrical bowl overlaid with grape vine-engraved casing. Height 9 1/4 inches.  
Estimate: \$200 - \$400



**Lot #190: AMERICAN ELECTROPLATED PITCHER**

**Description:** by the Meriden Company, with patent dates June 13 and November 3, 1868; ceramic lined. 12 3/4 inches high  
Estimate: \$100 - \$200

---

[To Top](#)



**Lots 191 - 200**

**Lot #191: GROUP OF THREE SILVER  
TABLE ARTICLES**



**Description:** Comprising an American 3 1/2 inch mug dated Jan. 1 1860 within repousse c-scrolls, an English 3 inch part reeded mug J.W.D. maker, London 1906, and a Russian tea glass holder with spiral twist handle, floral engraving and fleur de lys punch work; together with a Georgian silver tea strainer with faux ivory handle. From the Estate of Frederick W. Hughes  
Estimate: \$200 - \$300

**Lot #192: AMERICAN SILVER FOUR  
PIECE TEA SERVICE**



**Description:** J.J. Monell and C. J. Williams, circa 1830. Comprising a pot, covered sugar bowl, creamer and waste pail; with lobed bowls, claw and ball feet, the dome covers with wheat sheaf knob. Height of pot 10 inches; approx. 124 troy ounces.  
Provenance: Hirschl & Adler Galleries  
From the Estate of Frederick W. Hughes  
Estimate: \$2000 - \$3000

**Lot #193: PAIR OF AMERICAN SILVER  
LIGHTHOUSE-FORM SHAKERS**



**Description:** Together with a French cut-glass castor with Cristofle silver-plated twist on cover and another glass castor with silver-plated cover. From the Estate of Frederick W. Hughes  
Estimate: \$80 - \$120

**Lot #194: SET OF NINE AMERICAN  
SILVER DINNER FORKS AND FOUR  
MATCHING LUNCH FORKS**

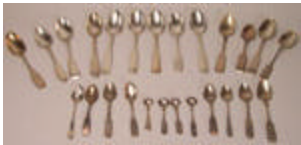


**Description:** Impressed mark, "Lincoln & Reed", in the "Fiddle" pattern; together with ten Cristofle "Fiddle" pattern silver-plated dinner forks, four silver-plated knives, and eleven bone-handled fruit knives. From the Estate of Frederick W. Hughes  
Estimate: \$250 - \$350



**Lot #195: AMERICAN SILVER TWO AND QUARTER PINT COFFEE POT**

**Description:** Retailed by Black, Starr & Gorham; the footed pear-form bowl with angular swan's neck spout, wood handle, gadroon edge, and pineapple knob. 8 3/4 inches high; approx. 23 troy ounces  
From the Estate of Frederick W. Hughes  
Estimate: 125.00 - 175.00



**Lot #196: GROUP OF AMERICAN COIN SILVER SPOONS**

**Description:** Most in the "Fiddle" pattern: including four soup spoons by Jones, Lows & Bell with waved handles, five other soups, two teaspoons with wheat sheaf or flower basket terminals, five other teaspoons and four salts; together with five Russian Silver "Fiddle" pattern soup spoons.  
From the Estate of Frederick W. Hughes  
Estimate: \$100 - \$150



**Lot #197: AMERICAN HAMMERED SILVER WELL-AND-TREE PLATTER**

**Description:** Shreve & Co., San Francisco. The partially notched border with rounded corners, raised on four scroll feet. 24 inches long, approx. 100 troy ounces  
From the Estate of Frederick W. Hughes  
Estimate: \$1000 - \$1500



**Lot #198: PAIR OF AMERICAN SILVER-PLATED RECTANGULAR ENTREE DISHES AND COVERS**

**Description:** W. Adams, retailed by Brown & Bush, circa 1850. The everted rims with rounded corners and cast with anthemion bands, the covers with removable handles.  
From the Estate of Frederick W. Hughes.  
Estimate: \$500 - \$700



**Lot #199: ASSEMBLED GROUP OF TWENTY-SEVEN ALASKAN SILVER SOUVENIR SPOONS**

**Description:** The handles variously engraved with Eskimo motifs; together with two Alaskan copper spoons and a two piece Southwest Indian silver salad set.  
From the Estate of Frederick W. Hughes  
Estimate: \$100 - \$200





**Lot #200: PAIR OF MEXICAN SILVER  
BAROQUE STYLE CANDLESTICKS**

**Description:** Retailed by the  
Metropolitan Museum of Art. With  
baluster-form stems and concave sided  
triangular bases; together with a Mexican  
hammered and repousse bowl. Height of  
candlesticks 14 1/2 inches, diameter of  
bowl 9

1/4 inches, approx. 94 troy ounces

From the Estate of Frederick W. Hughes

Estimate: \$300 - \$400

---

**To Top**

