

Lots 1 - 10



Lot #1: PORTUGUESE NEEDLEWORK CARPET

Description: The green with floral medallions within green and ivory stripe border with flowerheads.

Approx. 7 feet 6 1/2 inches x 9 feet 10 inches.

Estimate: \$400 - \$600



Lot #2: CHINESE NEEDLEWORK CARPET

Description: The ivory field with terracotta trellis overlay centering floral clusters, within flowerhead border.

Approx. 17 feet 10 inches x 14 feet 3 inches

Estimate: \$800 - \$1200



Lot #3: NEEDLEWORK "AUBUSSON" CARPET

Description: Centered by an oval floral wreath on ivory and oatmeal ground within shaped tan border worked with ivory floral garlands and floral clusters.

Approx. 7 feet 9 inches x 9 feet 9 inches

Estimate: \$600 - \$800



Lot #4: PERSIAN MESHED CARPET.

Description: The shaped cobalt foliate meander medallion anchored to a rose field with floral trelliswork, within primary cobalt and six guard borders

Approx. 8 feet 4 inches x 10 feet 11 inches

Estimate: \$900 - \$1200



Lot #5: USBEK KAZAK RUG.

Description: The rose field with lattice design within ivory flower head main and two narrow blue borders.

Approx. 6 feet 6 inches x 8 feet 7 1/2 inches

Estimate: \$600 - \$800



Lot #6: PERSIAN "GARDEN" TILE BAKTIARI.

Description: Incorporating 56 tiles variously worked with stylized flower heads and stems within primary rust and gray flower head borders and three guard borders, in tones of ivory, grey, tan, rust and salmon.

Approx. 10 feet x 12 feet 3 inches

Estimate: \$1400 - \$1800



Lot #7: CAUCASIAN LONG RUG

Description: The ivory field with diamond trellis overlay within main rose cruciform border, S-hook, barber pole and serrated subsidiary borders.

Approx. 8 feet 3 1/2 inches x 45 1/2 inches

Estimate: \$700 - \$900



Lot #8: PERSIAN CARPET

Description: The dark blue field with floral trellis overlay within primary wine red flower stem border and five guard borders.

Approx. 9 feet 7 1/2 inches x 12 feet 7 inches

Estimate: \$1400 - \$1600



Lot #9: PAIR OF KILIMS.

Description: Each worked with oblong hexagonal oatmeal medallion anchored to a rose field within multiple borders.

Approx. 40 inches x 5 feet 1 inch and 41 inches x 5 feet 2 inches

Estimate: \$400 - \$600



Lot #10: PERSIAN CARPET.

Description: The brick field with lattice overlay within oatmeal primary border and two guard borders.

Approx. 9 feet 3 inches x 11 feet 6 inches

Estimate: \$300 - \$500

Lots 11 - 20



Lot #11: CAUCASIAN RUG

Description: With stepped cruciform medallions on a tan field.

Approx. 4 feet 6 inches x 43 1/2 inches.

Estimate: \$150 - \$250



Lot #12: NORTHWEST PERSIAN RUNNER

Description: The brick field with six oatmeal diamond medallions, three inner borders, camel's hair ground outer borders; together with two tartan pattern throw pillows and a velvet pillow.

Approx. 40 1/4 inches x 15 feet 2 inches

Estimate: \$200 - \$300



Lot #13: PERSIAN TRIBAL RUG

Description: The blue field with three conjoined stepped octagons within primary indigo border and multiple guard borders.

Approx. 9 feet 1 inch x 6 feet 2 1/2 inches

Estimate: \$700 - \$900

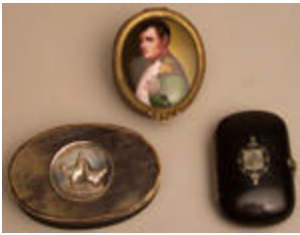


Lot #14: NAVAJO RUG

Description: The ivory field worked with black and tan concentric zig-zag diamonds

Approx. 38 1/2 inches x 5 feet 5 inches

Estimate: \$150 - \$250



Lot #15: GROUP OF THREE LIDDED BOXES

Description: The first an English oval horn box fitted with silver medallion, "The Welsummer Club"; the second a French gilt-metal with oval painted porcelain portrait of Napoleon; the last, pewter-inlaid horn. lengths: 3 inches to 3 3/4 inches

From the Estate of Frederick W. Hughes

Estimate: \$125 - \$175



Lot #16: AMERICAN ROSEWOOD GRAINED AND STENCILED BOX

Description: The hinged lid initialed "I.H." within a wreath and a gilt foliate border.

3 5/8 inches high x 8 7/8 inches wide x 5 1/8 inches deep

From the Estate of Frederick W. Hughes

Estimate: \$300 - \$500



Lot #17: GROUP OF FOUR LIDDED BOXES

Description: Comprising: two gilt metal with portraits of William Pitt and Charles James Fox, above Greek fret bands; two papier mache boxes fitted with gilt-metal medallion of George IV or copper medallion of Marie Antoinette; together with a pierced monogram medallion within floral wreath entwined with hearts.

Diameters: 2 1/8 inches to 3 3/4 inches

From the Estate of Frederick W. Hughes

Estimate: \$300 - \$400



Lot #18: ENGLISH GOLD TOOLED LEATHER STORAGE BOX

Description: The lock plate engraved, "E. Dreyfous, 99 Mount Street, London" and "582 Fifth Avenue, NY"; with tooled vinework borders on a brown ground, three brass knob combination lock mechanism.

4 1/2 inches high x 14 1/2 inches wide x 9 3/4 inches deep

From the Estate of Frederick W. Hughes

Estimate: \$200 - \$300



Lot #19: TWO ENGLISH CERAMIC MUGS

Description: Comprising a transfer-decorated blue and white mug inscribed "His Royal Highness Frederick Duke of York"; and a lustreware mug inscribed "Thomas." 4 3/4 inches and 2 7/8 inches

From The Estate of Frederick W. Hughes

Estimate: \$100 - \$150



Lot #20: STAFFORDSHIRE COTTAGE-FORM PASTILLE BURNER AND INK STAND

Description: The central section with pierced dome, flanked by wings with ink wells, stepped base. 5 3/8 inches high x 6 1/2 inches wide
From the Estate of Frederick W. Hughes
Estimate: \$150 - \$200

Lots 21 - 30



Lot #21: GROUP OF CERAMIC TABLE DECORATIONS

Description: Comprising a pair of yellow-glazed figures of pug dogs, length 7 3/4 inches; a pair of ivory-glazed rooster and hen, height 8 inches; and a pair of Chinese matte brown-ground spherical bowls, relief applied with aquatic flowers, diameter 5 1/4 inches.
Estimate: \$80 - \$120



Lot #22: FOUR TURQUOISE-GLAZED POTTERY FIGURES.

Description: Comprising two seated fu dogs, one impressed "Vietnam", heights 8 1/4 inches and 13 1/2 inches, an 8 1/4 inch seated cat and a 3 1/2 inch beetle scarab; together with a 10 1/2 inch flambe-glazed barrel-form small garden seat, pierced with conjoined rondels.
Estimate: \$100 - \$150



Lot #23: GROUP OF CONTINENTAL CERAMIC TABLE ARTICLES

Description: Comprising a Samson "Famille Verte" 5 3/4 inch covered jar, a chantilly style 7 3/4 inch yellow ground vase, Paris porcelain creamer and covered sugar bowl, a 6 3/4 inch reticulated bowl, a pair of small blue-glazed cylindrical covered jars, a green figure decorated coffee pot, and a Danish 4 3/4 inch "1968" mug with silver medallion on the underside.
Estimate: \$125 - \$175



Lot #24: CONTINENTAL BISQUE PORCELAIN FIGURE OF A KNEELING ANGEL

Description: Impressed "B&G" above "Eneret" together with a pair of blue jasperware hexagonal portrait tiles of Abraham Lincoln and Napoleon, by The Mosaic Tile Company, Zanesville, Ohio. 9 inches high x 5 inches x 8 1/2 inches
Estimate: \$150 - \$200



Lot #25: GROUP OF TABLE ARTICLES

Description: Comprising: Two red lacquer rice bowls and covers, a matching 6 1/2 inch bowl and a small plate; a 6 1/2 inch black papier mache figure decorated plate; a two part shell salt and a nautilus shell spoon warmer on silver base; a Chinese 5 7/8 inch brass figure of a child holding a mallet and an 8 3/4 inch wood 1/2 round figure of a woman.
Estimate: \$100 - \$150



Lot #26: CAST PLASTER FIGURE OF A NUDE FEMALE

Description: Together with a veined red marble 11 3/4 inch jardiniere, a 31 inch shell and a glass globe enclosing shells.
Estimate: \$425 - \$625



Lot #27: MARBLEHEAD GREY-GLAZED BALUSTER-FORM VASE

Description: Impressed ship mark flanking M.P. 4 3/4 inches high
From the Estate of Frederick W. Hughes
Estimate: \$100 - \$150



Lot #28: TWO BROWN-GLAZED POTTERY ARTICLES

Description: One impressed "G.E. Ohr" above "Biloxi, Miss", the other incised "Biloxi"; the first spherical with wave rim, the second with thumb press neck. Heights: 3 1/2 inches and 4 1/2 inches
From the Estate of Frederick W. Hughes
Estimate: \$200 - \$300



Lot #29: VICTORIAN SALT-GLAZED STONEWARE PITCHER.

Description: The base impressed, "... July 1, 1842 by Jones & Walley, Cobridge, Gripsey 12"; relief molded with a camp fire scene with figures and a tent. 8 inches high

From the Estate of Frederick W. Hughes

Estimate: \$100 - \$150



Lot #30: GROUP OF WEDGEWOOD GILT RIMMED TAN GLAZED CERAMIC TABLE ARTICLES

Description: Comprising: two 8 inch deep dishes, a 6 3/4 inch dish, six 6 3/8 inch dishes, eleven 7 inch plates, eight 5 5/8 inch dishes, one 10 1/4 inch platter, one 5 5/8 inch bowl, eight coffee cups, four tea cups, one large cup.

From the Estate of Frederick W. Hughes

Estimate: \$250 - \$350

Lots 31 - 40

Lot #31: GROUP OF WEDGWOOD GILT RIMMED TAN GLAZED CERAMIC TABLE ARTICLES



Description: Impressed Wedgwood, Comprising: a 4 1/2 inch honey pot, cover and attached stand, from the McClelland Collection, a 6 1/4 inch two handled covered sugar bowl with chipped foot, two graduated ovoid cream jugs heights 5 1/2 and 6 inches, and a cup and saucer relief molded with cherry blossoms, together with a five inch cream jug with gilt coral decoration, two cylindrical coffee cans and four small tea cups.

From the Estate of Frederick W. Hughes

Estimate: \$125 - \$175

Lot #32: GROUP OF TAN-GLAZED POTTERY DESSERT SERVICE



Description: Relief molded with grape leaves, comprising eight 9 1/4 inch plates, a stemmed two-handled 12 inch compote and two 9 3/4 inch dishes; together with two 11 1/4 inch plates relief molded with ferns and rose leaves.

From the Estate of Frederick W. Hughes

Estimate: \$250 - \$350

Lot #33: GROUP OF SEVEN TAN GLAZED CERAMIC LEAF EMBOSSED TABLE 7027 333 ARTICLES



Description: Comprising: two Wedgwood 8 1/4 inch circular grape leaf plates, impressed "Wedgwood", a pair of 9 inch plates and matching 11 3/4 inch cake plate and two 6 1/2 inch dishes, with embossed number "337"

From the Estate of Frederick W. Hughes

Estimate: \$150 - \$250

Lot #34: WEDGWOOD TAN GLAZED CERAMIC ARMORIAL PART DINNER SERVICE.



Description: Impressed Wedgwood, each piece with gilt rim and grisaille armorial of two cavemen flanking a crowned cartouche. Comprising: eighteen 9 3/4 inch soup plates, fourteen, 9 3/4 inch dinner plates, four 8 inch plates and two 10 1/4 inch oval platters.

From the Estate of Frederick W. Hughes

Estimate: \$300 - \$400



Lot #35: GROUP OF FIVE SPODE TAN GLAZED CERAMIC TABLE ARTICLES

Description: Impressed "Spode": Comprising: a pair of 14 1/4 inch oval platters (one unmarked), and 8 inch basket with concave sides, arch handle and gilt edges and two 7 1/4 inch plates, together with a similar part reeded covered teapot and stand.
From the Estate of Frederick W. Hughes
Estimate: \$200 - \$300



Lot #36: PAIR OF ENGLISH TAN-GLAZED CAMPANIFORM URNS.

Description: Each transfer decorated with rabbit and swan panels, gilt roll-over rims, loop handles and bases; together with a Spode tan-glazed footed beaker.
5 7/8 inches high and 6 1/4 inches high
From the Estate of Frederick W. Hughes
Estimate: \$200 - \$300



Lot #37: BIEDERMEIER FIGURED WALNUT SIDE CHAIR

Description: With curved top rail, horizontal splat, shaped seat and square, tapered legs
Estimate: \$300 - \$500



Lot #38: AMERICAN MISSION OAK SMALL CIRCULAR TOP TABLE

Description: Bearing retail label of W.B. Moses & Sons, Washington, DC; the edge with brass studs, the block legs joined by x-stretcher.
26 3/4 inches high x 23 1/2 inches wide
From the Estate of Frederick W. Hughes
Estimate: \$150 - \$250



Lot #39: GEORGE III MAHOGANY WINDOW BENCH.

Description: The serpentine front flanked by out-sculpted arms raised on cabriole legs with carving at the knees and ending in scroll feet.
26 inches high x 57 inches wide
Estimate: \$2000 - \$3000

Estimate: \$2000 - \$3000



Lot #40: ARTS AND CRAFTS OAK AND BENTWOOD TABLE

Description: The circular top on three supports joined by a triangular shelf.

24 inches high x 13 1/4 inches wide

Estimate: \$80 - \$120

Lots 41 - 50



Lot #41: GEORGE III MAHOGANY PEMBROKE TABLE

Description: With two d-shaped leaves, the frieze drawer with brass ring drop handles, raised on square tapered legs ending in brass box casters. 28 inches high x 20 1/2 inches wide x 31 1/4 inches deep

Estimate: \$1200 - \$1800



Lot #42: GEORGE III MAHOGANY HALL CHAIR.

Description: The balloon shape back with relief-carved rondel of a bear, the plank seat on turned legs.

Estimate: \$300 - \$500



Lot #43: UNUSUAL CERAMIC FRAGMENT INLAY CENTER TABLE

Description: The oval top with three inlaid plate fragments and numerous other plate remnants, the cradle-form support on oval base centered by pink roses and raised on c-scroll feet.

29 1/2 inches high x 36 1/2 inches wide x 26 1/2 inches deep

Estimate: \$500 - \$700



**Lot #43: UNUSUAL CERAMIC FRAGMENT INLAY
CENTER TABLE**

Description: The oval top with three inlaid plate fragments and numerous other plate remnants, the cradle-form support on oval base centered by pink roses and raised on c-scroll feet.

29 1/2 inches high x 36 1/2 inches wide x 26 1/2 inches deep

Estimate: \$500 - \$700



Lot #44: WALNUT CENTER TABLE

Description: The square top above a pedestal containing two drawers above a door, raised on four scroll feet. 26 inches high x 24 inches wide x 24 inches deep

Estimate: \$200 - \$400



**Lot #45: PAINTED AND CHINOISERIE DECORATED
CENTER TABLE**

Description: The disked circular top painted with floral decoration raised on a painted and gilt stenciled base, raised on casters.

32 inches high x 37 1/2 inches deep

Estimate: \$2000 - \$3000



Lot #46: GEORGE II MAHOGANY DROP LEAF TABLE

Description: The drop leaf top inlaid with satinwood above a plain frieze raised on turned legs ending in pad feet. (satinwood inlay of a later date). 28 inches high x 24 inches wide x 44 inches deep (open)

Estimate: \$600 - \$800



Lot #47: LOUIS XVI CARVED MAHOGANY TABLE A ECRIRE, STAMPED JME, CANABAS.

Description: The dish top above a panel frieze fitted with a drawer with fluted out-set corners. Raised on turned and fluted legs ending in sabot and casters. Joseph Gengenbach known as Canabas, is renowned for his use of Mahogany, Maitre 1766, apprenticed to Oben. 29 inches high x 27 1/2 inches wide x 17 inches deep
Estimate: \$5000 - \$7000



Lot #48: DUTCH MARQUETRY MAHOGANY AND FLORAL INLAID KIDNEY SHAPED WRITING TABLE

Description: Raised on square tapering legs, and fitted with drawers
30 inches high x 48 inches wide x 22 inches deep
Estimate: \$1800 - \$2200



Lot #49: ART MODERNE WALNUT -VENEERED KNEEHOLE DESK

Description: The top with round corners above a frieze drawer and two pull-out slides, each pedestal with drawers, recessed ebonized base. 30 1/2 inches high x 7 feet wide x 43 1/2 inches deep
Estimate: \$800 - \$1200



Lot #50:PAIR OF CHARLES II-STYLE CARVED OAK SIDE CHAIRS

Description: Each top rail relief carved with an owl above spiral twist spindles, the plank seats on spiral twist and block legs, with loose burgundy velvet mats. Estimate: \$700 - \$900

Lots 51 - 60



Lot #51: A SET OF TEN LEATHER-UPHOLSTERED ARM CHAIRS

Description: Each upholstered back supported by an upholstered seat with outscrolled arms, raised on square cabriole legs. 39 1/2 inches high x 25 inches wide x 23 inches deep
Estimate: \$3000 - \$4000



Lot #52: GEORGE I WALNUT STOOL.

Description: The upholstered slip seat above a veneered seat rail raised on cabriole legs, ending in pad feet. 18 inches high x 19 inches wide x 15 inches deep
Estimate: \$1200 - \$1400



Lot #52A: BIEDERMEIER WALNUT SETTEE

Description: With arched top rail flanking, s-scroll armrests, the molded rails on lateral splayed feet, upholstered in yellow silk. 6 feet 8 inches long
Estimate: \$3000 - \$5000



Lot #53: LOUIS XV CARVED BEECHWOOD FAUTEUIL EN CABRIOLET.

Description: The carved cresting rail above a padded seat with out scrolled carved arms, the whole raised on floral carved cabriole legs and ending in scroll feet
Estimate: \$1000 - \$1500



Lot #53A: EDWARDIAN UPHOLSTERED SETTEE.

Description: The curved and upholstered back above an upholstered seat raised on turned legs (legs cut and extended).
Estimate: \$500 - \$700



Lot #54: TWO AMERICAN FOOTSTOOLS

Description: One with ring-turned members, the other Renaissance Revival, with hoof feet
Lengths: 17 1/2 inches and 11 inches
Estimate: \$80 - \$100



Lot #55: A MECHANICAL PIANO STOOL.

Description: The needlepoint upholstered seat above a base made up of four turned and out splayed legs joined by a stretcher.
21 inches high x 13 1/2 inches wide
Estimate: \$300 - \$400



Lot #56: "HE IS NOT A - MISS!"

Description: Engraving with hand-coloring, published by Thomas McLean circa 1832; matted and framed under glass.
21 inches x 15 1/2 inches (framed)
From the Estate of Frederick W. Hughes
Estimate: \$75 - \$125



Lot #57: GENTS' FASHION PRINT

Description: 19th c. colored engraving, matted and framed under glass. Provenance: Aileen Minor.
17 inches x 34 inches (framed)
From the Estate of Frederick W. Hughes
Estimate: \$200 - \$300



Lot #58: TWO BALLET PRINTS

Description: In color, identified on labels as "La Cachucha" and "Pera Mema," matted under acetate.
Provenance: Lyons Ltd.
12 inches x 9 inches (mat)
From the Estate of Frederick W. Hughes
Estimate: \$50 - \$75



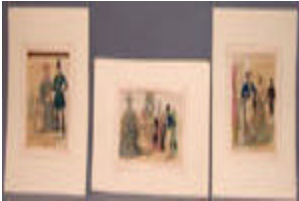
Lot #59: TWO FASHION PRINTS

Description: In color, depicting mens' wear, matted and framed under glass.

22 3/4 inches x 19 7/8 inches (framed)

From the Estate of Frederick W. Hughes

Estimate: \$75 - \$125



Lot #60: THREE COSTUME ILLUSTRATIONS

Description: In color, two titled "Modes de Paris," the third titled "Costumes Parisiens."

8 1/4 inches x 5 3/4 inches (plate)

From the Estate of Frederick W. Hughes

Estimate: \$30 - \$40

Lots 61 - 70



Lot #61: FOUR POLITICAL CARTOONS

Description: Including "A Change in the Head of Affairs", "Fashionable Reading", "The Cardinal in the Dumps" and "Heroes Recruiting at Kelsy's: All prints, three in color and all framed under glass.

18 3/4 inches x 14 7/16 inches (largest, framed)

From the Estate of Frederick W. Hughes

Estimate: \$100 - \$200

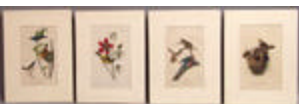


Lot #62: "FIFTY CENTS".

Description: Political cartoon printed by H. R. Robinson, circa 1837, framed under glass. 16 inches x 22 3/4 inches (framed)

From the Estate of Frederick W. Hughes

Estimate: \$75 - \$100



Lot #63: FOUR ORNITHOLOGICAL PRINTS AFTER AUDUBON

Description: Color prints on paper comprising: Blue Long Grosbeak, Common Troupial, Passenger Pigeon and Short-billed Marsh Wren; all identified in the plate as "Drawn from Nature by JJ Audubon" and "Lithographed, Printed and Colored by JT Bowen, Philadelphia." matted under cetate.

10 1/4 inches x 6 1/2 inches (page)

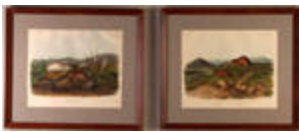
From the Estate of Frederick W. Hughes

Estimate: \$75 - \$125



Lot #64: "LARGE TAILED SKUNK"

Description: Lithograph with hand-coloring after J. W. Audubon, published by J. T. Bowen, 1846.
26 1/2 inches x 20 1/4 inches (sight)
From the Estate of Frederick W. Hughes
Estimate: \$400 - \$600



Lot #65: TWO PRINTS OF LEMMINGS.

Description: Lithographs with color, after J. W. Audubon, published by J. T. Bowen, 1847.
19 inches x 23 inches (image, sight)
From the Estate of Frederick W. Hughes
Estimate: \$400 - \$600



Lot #66: ORNITHOLOGICAL PRINT

Description: In color, after Audubon, printed by J. T. Bowen. 13 inches x 16 1/2 inches (framed)
From the Estate of Frederick W. Hughes
Estimate: \$30 - \$50



Lot #67: THREE NATURE PRINTS

Description: Bookplates with hand-coloring, matted and framed under glass.
9 3/8 inches x 6 inches (image)
From the Estate of Frederick W. Hughes
Estimate: \$50 - \$75



Lot #67A: SIX BUTTERFLY PRINTS IN COLOR

Description: Matted and framed as a set.
9 1/2 inches x 10 1/2 inches (framed)
From the Estate of Frederick W. Hughes
Estimate: \$75 - \$125



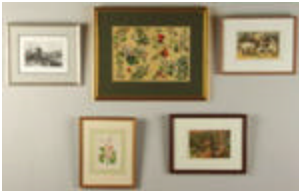
Lot #68: TWO FRENCH PRINTS

Description: "Pavillon Rustique" and "Cabane Rustique de Létang Robert," plates 48 and 49 from "Habitation Champêtre," Paris, Monrocq Freres Editeurs, both signed indistinctly in the plate "Victor Petiz(?)"
10 1/2 inches x 13 7/8 inches (page)
From the Estate of Frederick W. Hughes
Estimate: \$125 - \$175



Lot #69: TWO BOTANICAL PRINTS - BLUE FLOWERS

Description: "Wisenia corymbosa" and "Scutellaria macrantha," after G. Loddiges, both matted under acetate. 19 inches x 16 inches (mat)
From the Estate of Frederick W. Hughes
Estimate: \$50 - \$75



Lot #70: GROUP OF FRAMED PRINTS

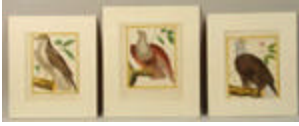
Description: Comprising four botanical studies from "Iconographic de la Flore française"; four black and white American views after Bartlett; two lithographs of goats and cattle; two other prints "Panther" and "Water-Monitors Robbing a Nest"; two prints of pears, and a double fold fruit print. The largest framed 17 3/4 inches x 21 3/4 inches
Estimate: \$150 - \$200

Lots 71 - 80



Lot #71: "MINERALOGIE.... AND SHELLS"

Description: Group of six French engravings, two by Ant. Pazzife, after Jos. Menabuoni, four in giltwood frames, two framed together in ebonized and parcel gilt frame. frame four: 19 inches x 15 1/4 inches double: 21 inches x 28 1/4 inches
Estimate: \$200 - \$300



Lot #72: "BIRDS OF PREY" from "HISTOIRE NATURELLE"

Description: Suite of thirteen hand colored engravings after Martinet of eagles, falcons and other birds with plate numbers, 112, 411, 413, 415, 416, 417, 420, 421, 424, 425, 447, 461, and 462; four with mats, all unframed, five with ink notations in borders or margins; together with twenty-two pages of text.

Impression: 10 inches x 8 1/4 inches

Estimate: \$300 - \$500



Lot #73: GROUP OF FIVE BOTANICAL PRINTS PUBLISHED BY, PHILIP MILLER, LONDON

Description: matted and frame 23 1/2 inches high x 18 1/2 inches wide under glass

Estimate: \$300 - \$400



Lot #74: GROUP OF SIX PRINTS DEPICTING ENGLISH SOLDIERS

Description: Matted and framed; Published by J.S. Virtue & Co., Ltd., matted and framed under glass, frame 19 inches high x 15 1/2 inches wide

Estimate: \$600 - \$800



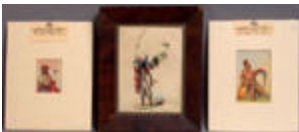
Lot #75: "BUFFALO HUNT, CHASING BACK"

Description: Hand-colored lithograph from Catlin's North American Indian Collection.

12 inches x 17 5/8 inches (image)

From the Estate of Frederick W. Hughes

Estimate: \$2000 - \$3000

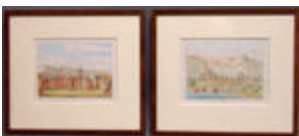


Lot #76: SEVEN COLOR PLATES OF INDIANS

Description: One framed and signed "Pinnemaker" in the plate, the other six, after Catlin, matted under acetate. Various sizes

From the Estate of Frederick W. Hughes

Estimate: \$150 - \$200



Lot #77: FIVE PRINTS AFTER CATLIN

Description: With hand-coloring; matted and framed under glass. Various sizes, 13 inches x 10 1/2 inches (largest, framed)

From the Estate of Frederick W. Hughes

Estimate: \$125 - \$175



Lot #78: SIX PRINTS AFTER CATLIN

Description: With hand-coloring; all matted and framed under glass. 13 inches x 10 1/2 inches (framed)

From the Estate of Frederick W. Hughes

Estimate: \$150 - \$250



Lot #79: FOUR PRINTS AFTER CATLIN

Description: With hand-coloring; matted and framed under glass. 12 3/4 inches x 10 1/4 inches (framed)

From the Estate of Frederick W. Hughes

Estimate: \$100 - \$150



Lot #80: SIX PRINTS AFTER CATLIN

Description: With hand-coloring; all matted and framed under glass. Various sizes, the largest 11 inches x 12 1/2 inches (framed)

From the Estate of Frederick W. Hughes

Estimate: \$150 - \$250

Lots 81 - 90



Lot #81: PAIR OF FRENCH MUMMY PRINTS

Description: Framed under glass in wooden frames which have metal skulls and crossbones affixed to each corner. 19 1/2 x 24 5/8 (framed)

From the Estate of Frederick W. Hughes

Estimate: \$75 - \$125



Lot #82: MUMMIFIED LEFT HAND

Description: With a faience ring on little finger, in a glass top box. 6 inches long

From the Estate of Frederick W. Hughes

Estimate: \$200 - \$300



Lot #83: FOSSILIZED BONE

Description: 20 1/4 inches long

From the Estate of Frederick W. Hughes

Estimate: \$300 - \$500



Lot #84: THREE MINERAL SPECIMENS

Description: Including one with quartz and mica combined.

Lengths: 3 3/4 inches, 4 1/2 inches and 7 3/4 inches

From the Estate of Frederick W. Hughes

Estimate: \$30 - \$40



Lot #85: ROMAN BRONZE OIL LAMP

Description: Cast as an open-mouthed head of a man with coiled hair; together with a verdigris bronze paddle-form fragment, in shadowbox frame, a black ground terracotta footed beaker-form cup, and a Pre-Columbian style gilt-metal bird pendant. Oil lamp 5 inches long.

From The Estate of Frederic W. Hughes

Estimate: \$100 - \$150



Lot #86: GROUP OF ANCIENT ARTIFACTS

Description: Comprising: an Egyptian 8 3/4 inch figure with traces of polychrome decoration; an Egyptian 3 inch faience Ushabti figure; a terracotta three inch head; and a 5 1/2 inch shell fragment.

From The Estate of Frederick W. Hughes

Estimate: \$100 - \$150



Lot #87: TABLE DECORATION " MAMMOTH TOOTH"

Description: On plexiglass stand. 11 inches high

From the Estate of Frederick W. Hughes

Estimate: \$50 - \$75



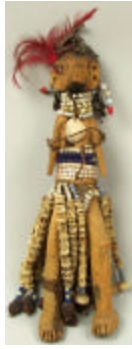
Lot #88: NORTHWEST COAST WOOD STORAGE BOX

Description: The four sides painted in black and red with a pair of totemic bear masks, alternating with abstract symbols, with Hudson-Bay Fur Co. paper label
Ex Warhol Collection

9 1/4 inches high x 12 inches wide x 9 inches deep

From The Estate of Frederick W. Hughes

Estimate: \$500 - \$700



Lot #89: TRIBAL BEAD-MOUNTED WOOD FETISH FIGURE.

Description: With feathered headdress, beaded neck piece and belt and bone bracelet 13 inches long
From The Estate of Frederick W. Hughes
Estimate: \$100 - \$150



Lot #90: TWO TRIBAL ARTICLES

Description: Comprising: a tooth imbedded weapon from Gilbert Island and a Turkish horn spoon. 16 1/4 inches long and 9 1/4 inches long
From The Estate of Frederick W. Hughes
Estimate: \$40 - \$60

Lots 91 - 100



Lot #91: GROUP OF THREE MAYAN POLYCHROME POTTERY VESSELS

Description: Comprising a tripod 4 5/8 inch round tripod vessel, a 5 5/8 inch bowl and a 4 1/2 inch bowl, with stylized figures in shades of orange and black
Provenance: The Andy Warhol Collection, sold Sotheby's New York, April 23 - May 3, 1988, Lot 1679.
From the Estate of Frederick W. Hughes
Estimate: \$400 - \$500



Lot #92: TRIBAL EMBROIDERED ANIMAL SKIN POUCH WITH TIN FRINGES

Description: Of rectangular outline embroidered in orange, sky blue and ivory, contained in a shadowbox frame. Length approx. 14 inches
From the Estate of Frederick W. Hughes
Estimate: \$80 - \$120



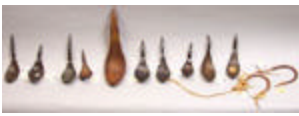
Lot #92A: INDIAN FAMILY

Description: Oil on canvas, signed and dated lower left "McClellan/1881", unframed. Ex Warhol Collection.

30 inches x 25 inches

From the Estate of Frederick W. Hughes

Estimate: \$2500 - \$3500



Lot #93: GROUP OF TEN NORTHWEST COAST INDIAN HORN AND TWO WOOD AND BONE PORPOISE HOOKS

Description: Provenance: The Andy Warhol Collection, Sold Sotheby's New York, April 23 - May 3, 1988, Lot 2590

lengths: 5 3/8 inches to 11 3/4 inches

From the Estate of Frederick W. Hughes

Estimate: \$300 - \$500



Lot #94: NEW GUINEA CARVED PAINTED WOOD SHIELD

Description: In the form of an elongated face with open eyes and mouth, bird -form crest.

37 1/2 inches long x 11 inches wide

Estimate: \$150 - \$250



Lot #95: AFRICAN IRON-MOUNTED CARVED WOOD DANCE MASK

Description: With hinged jaw, cylinder cheeks, nail head decorated nose and eyebrows and metal strap applied skull, with wrought iron stand.

approx. 12 1/2 inches high

Estimate: \$200 - \$300



Lot #96: AFRICAN CARVED WOOD DANCE MASK

Description: The almond-shape face with open eyes and mouth and parted hair with a wrought iron stand. 10 1/2 inches long

From the Estate of Frederick W. Hughes

Estimate: \$150 - \$200



Lot #97: GROUP OF THREE AFRICAN WOOD ARTICLES

Description: Comprising: a 16 1/4 inch figure; a 12 x 8 1/4 inch relief panel carved with an X, a frog and huts; and a 25 inch two handled shallow dish on four round feet, together with a 7 inch coiled skull cap.

From The Estate of Frederick W. Hughes

Estimate: \$125 - \$175



Lot #98: TWO AFRICAN WOOD HEADRESTS

Description: Lengths 6 1/2 inches and 18 1/2 inches

From the Estate of Frederick W. Hughes

Estimate: \$100 - \$200



Lot #99: JAPANESE METAL MASK

Description: With open mouth, nostrils and eyes, raised bushy eyebrows, cheeks applied with butterflies. 8 inches long x 6 1/2 inches wide

From the Estate of Frederick W. Hughes

Estimate: \$100 - \$150



Lot #100: FOUR INDIAN MINIATURES

Description: Hand-colored, mounted and framed under glass. 9 1/4 inches x 7 1/2 inches (framed)

From the Estate of Frederick W. Hughes

Estimate: \$100 - \$150