

Lots 201 - 210



Lot #201: GREEN STAINED BONE-HANDLED STEEL PART FLATWARE SERVICE

Description: With reeded handles, comprising twelve dinner knives, seven fruit knives, eight dinner forks, and eleven fruit fruit forks, together with eleven bone-handled fruit knives by J. Russell & Co.

From the Estate of Frederick W. Hughes
Estimate: \$100 - \$150



Lot #202: GROUP OF THREE ENGLISH SILVER-PLATED TABLE ARTICLES

Description: Length of largest 14 inches
From the Estate of Frederick W. Hughes
Estimate: \$300 - \$400



Lot #203: ENGLISH SILVER-PLATED WINE COOLER

Description: The cylindrical bowl with reeded bands, lion's head ring drop handles, a removable rim and liner. 7 1/2 inches high x 6 3/4 inches diameter
From the Estate of Frederick W. Hughes
Estimate: \$200 - \$300



Lot #204: TWO SILVER ARTICLES

Description: Comprising a French 4 3/4 inch wine taster with shaped handles and an Ellmar silver Co. 6 3/4 inch porringer with pierced handle; together with an English silver-mounted stoneware spherical match striker, S & Ban maker, Birmingham, 1926; a silver-plated wine taster with enameled armorial and a 3 1/4 inch dish mounted with an Argentine medal.

From the Estate of Frederick W. Hughes
Estimate: \$250 - \$350



**Lot #205: AUSTRIAN ART DECO SILVER
PART FLATWARE SERVICE**

Description: Impressed foil mark and mushroom mark: comprising: Six silver hollow-handled dinner knives, six dinner forks, seven large soup spoons, one twelve inch soup ladle, one serving spoon; together with two similar pastry servers; together with a silver-plated wine bucket, impressed "Hotel Lombardy".

Estimate: \$300 - \$400



**Lot #206: TWO GEORGE III SILVER
TABLE ARTICLES**

Description: Comprising a 14 1/4 inch punch ladle, bearing marks "T.C. London, 1772", with shell-form bowl and engraved armorial of a pelican above a crown; and an egg cup stand with date mark for 1805, with ring supports, central pole handle, oval base and lion's paw feet.

6 1/8 inches high x 4 3/4 inches long

Estimate: \$200 - \$250



**Lot #207: FRENCH ART DECO SILVER
COFFEE POT**

Description: Impressed "B.F." 6 3/4 inches high x 7 5/8 inches wide Approx. 28 ounces

Estimate: \$1400 - \$1600



**Lot #208: FRENCH ART DECO SILVER
HAIR BRUSH**

Description: Inscribed on handle, "J. Puiforcat Paris" with engraved concentric circles and flat rectangular handle. 7 3/8 inches long

From The Estate of Frederick W. Hughes

Estimate: \$125 - \$175



**Lot #209: PAIR OF ITALIAN SILVER TEA
CADDIES**

Description: Impressed "Sfriso 800 Venezia"; one of hexagonal outline, the other oblong octagonal, with hinged lids. heights: 3 7/8 inches and 3 3/4 inches; widths: 3 inches and 3 3/8 inches; approx. 16 troy ounces.

From the Estate of Frederick W. Hughes

Estimate: \$125 - \$175



Lot #210: GROUP OF FIVE ITALIAN SILVER TABLE ARTICLES

Description: Impressed "Sfriso 800, Venezia"; comprising a nine inch tray, a 5 7/8 inch plate, a 6 7/8 inch bowl with everted rim, and two plates with gadroon rims, 5 and 5 3/4 inches. approx. 36 troy ounces

From the Estate of Frederick W. Hughes
Estimate: \$150 - \$200

To Top



Lots 211 - 220



Lot #211: FRENCH SILVER INDIVIDUAL COFFEE POT, IN THE LOUIS XVI STYLE

Description: Impressed "A.R." ; together with eight 6 1/2 inch butter plates, monogrammed.

From the Estate of Frederick W. Hughes
Estimate: \$250 - \$350

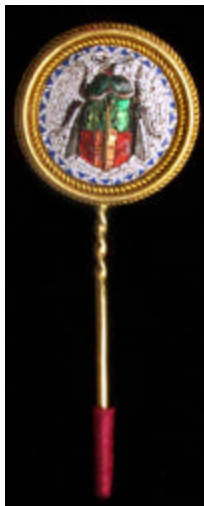


Lot #212: VICTORIAN SILVER AND SILVER GILT PRESENTATION PIN: "ANCIENT ORDER OF FORESTERS" Dibdin & Co., Ltd. London 1882

Description: The relief-molded medallion with two figures flanking a stag's-headed armorial; on an engraved back also with stag's head; the reverse inscribed "Presented to Bro. H.G. Shearing, P.C.R... Sept. 20th 1882" length 4 1/4 inches

From the Estate of Frederick W. Hughes
Estimate: \$300 - \$400





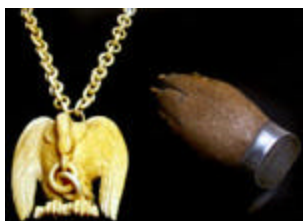
**Lot #213: MICROMOSAIC-MOUNTED
GOLD STICK PIN**

Description: Probably Italian, depicting
a beetle
From the Estate of Frederick W. Hughes
Estimate: \$80 - \$120



Lot #214: BROOCH

Description:
From The Estate of Frederick W. Hughes
Estimate: \$60 - \$80



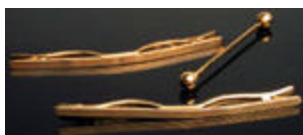
**Lot #215: BROOCH & PENDANT
NECKLACE**

Description: One with underglazed blue
"C" mark, transfer decorated with roses,
morning glories and butterflies, floral
knop.
dimensions: 3 3/4 inches high
From the Estate of Frederick W. Hughes
Estimate: \$100.00 - \$200.00



**Lot #216: GROUP OF THREE CIGARETTE
CASES**

Description: Comprising a Tiffany & Co.
hammered silver rectangular 4 5/8 inch
case, a silver-plated 3 1/4 inch case with
engine-turned surface centering a map of
Holland, and a French silver-plated case
with enameled "snakeskin" surface;
together with a silver-plated spherical 2
1/4 inch compact.
From the Estate of Frederick W. Hughes
Estimate: \$175 - \$225



Lot #217: THREE COLLAR CLIPS

Description: Two marked "585 T & Co."
From the Estate of Frederick W. Hughes
Estimate: \$50 - \$75



Lot #218: TWO MENS DRESS SETS

Description: Each comprising cuff links and three studs.

From the Estate of Frederick W. Hughes
Estimate: \$125 - \$175



Lot #219: THREE PAIRS OF CUFFLINKS

Description:

From the Estate of Frederick W. Hughes
Estimate: \$60 - \$80



Lot #220: THREE POCKET ARTICLES

Description: The cigarette lighter marked "Dunhill/Paris," the pillbox marked "Tiffany & Co./Sterling" Lighter: 2 1/2 inches tall

From the Estate of Frederick W. Hughes
Estimate: \$175 - \$225

[To Top](#)



Lots 231 - 240



Lot #231: TWO SILVER BRACELETS

Description: One with inlaid stones marked "Made in Mexico"; the second with an indistinct mark. From the Estate of Frederick W. Hughes

Estimate: \$250 - \$350



Lot #232: TURQUOISE AND SILVER NECKLACE

Description: Together with a bracelet and necklace.

From the Estate of Frederick W. Hughes
Estimate: \$75 - \$100



Lot #233: SIX CRUCIFORM PENDANTS

Description: One marked "925"

From the Estate of Frederick W. Hughes
Estimate: \$50 - \$75



Lot #233: SIX CRUCIFORM PENDANTS

Description: One marked "925"
From the Estate of Frederick W. Hughes
Estimate: \$50 - \$75



Lot #234: GEORGE III MAHOGANY - INLAID OAK LARGE LONGCASE CLOCK

Description: The 20 inch break arch painted face in a hood with swan's neck cresting on free-standing pilasters with gilt-metal capitals and bases, the trunk with cross banding, block-form base. approx. 7 feet 8 1/4 inches high x 30 1/4 inches wide x 16 inches deep
Estimate: \$3000 - \$5000



Lot #235: L. GILBERT OAK HANGING REGULATOR.

Description: With label "Wm. L. Gilbert Clock Co. Winsted, Conn". the printed paper dial with day of the month indicator, face within an octagonal case, above a pendulum window. 28 1/4 inches long
Estimate: \$150 - \$250



Lot #236: ALPHA HART MAHOGANY PILLAR & SCROLL CLOCK.

Description: With interior paper label: the white painted wood dial within a glass door with eglomise panel inscribed, "College Street, New Haven", within stenciled border. 26 inches high x 16 inches wide
Estimate: \$300 - \$500



Lot #237: SESSIONS OAK WALL REGULATOR.

Description: The 11 1/2 inch dial labeled "Made by the Sessions Clock Co., Forestville, Conn." within a two pane glass door, the case carved with swags and leaf tips, bracket base. 38 1/2 inches high x 16 1/2 inches wide
Estimate: \$200 - \$300



**Lot #238: TWO FEDERAL STYLE
MAHOGANY AND EGLOMISE BANJO
CLOCKS**

Description: by Ingraham and The New Haven Clock Co.; the one with silvered steel dial and foliate strapwork trunk panel, the other with eagle crest, painted dial, floral trunk panel and marine print at base; together with a Sessions shelf clock with painted dial, eglomise panel of a ship, swan's neck pediment. Heights: 33 1/2 inches, 29 inches, 17 inches

Estimate: \$100 - \$200



**Lot #239: GEORGE III STYLE
MAHOGANY BALLOON CASE.**

Description: Retailed by Herman T. Jarecki, Erie: the silvered steel dial within a figural case, raised on ogee bracket feet.

19 inches high x 13 1/2 inches wide
Estimate: \$200 - \$300



**Lot #240: SETH THOMAS POLISHED
BRASS CARRIAGE CLOCK.**

Description: The four inch enameled dial above a mercury pendulum, within a beveled glass and brass case. 11 1/8 inches high x 7 3/8 inches wide
Estimate: \$300 - \$500

To Top



Lots 241 - 250



**Lot #241: CONTINENTAL SILVER OPEN
FACE POCKET WATCH**

Description: With white enamel dial, the hinged back engraved with blind cartouche.

2 3/8 inch cartouche
Estimate: \$100 - \$150



**Lot #242: ENGLISH SILVER-PLATED
OPEN FACE POCKET WATCH**

Description: By Thomas F. Cooper, the enamel face painted with figures by a lakeside town, with attached chain; together with a French Remontoir watch and four American watches by Elgin, Waltham, New England Watch Co.

"Scout"

model and National Watch Co., respectively.

Diameters: 1 3/4 inches to 2 1/4 inches

Estimate: \$100 - \$125



**Lot #243: FIVE AMERICAN OPEN FACE
POCKET WATCHES**

Description: Comprising a Waltham and an Ingersoll Reliance in gold-filled cases; and another Waltham with stag engraved reverse, an Elgin and an Ingersoll-Trenton.

Diameters: 1 3/4 inches to 2 1/8 inches

Estimate: \$75 - \$125



**Lot #244: THREE AMERICAN OPEN FACE
POCKET WATCHES**

Description: By Waltham, Elgin and Hampton Watch Co. Diameter of each 2 1/4 inches

Estimate: \$50 - \$75



**Lot #245: FOUR AMERICAN OPEN FACE
POCKET WATCHES**

Description: Comprising: an Illinois watch with gold-filled case; an American Waltham watch with coin case; and an Equity and a Liberty watch.

Diameter of each: 2 inches

Estimate: \$80 - \$120



**Lot #246: TWO AMERICAN GOLD-
FILLED GENTLEMAN'S POCKET WATCHES**

Description: By Hamilton, and Elgin, with engraved Dueber Special Cases; together with an Elgin gold-plated open face watch.

Diameters: 2 3/8 inches and 3 inches

Estimate: \$75 - \$100



Lot #247: THREE GOLD FILLED GENTLEMAN'S POCKET WATCHES
Description: By Seth Thomas, Standard and Illinois Watch Co., engraved with scrollwork, engine turning and a shell medallion; together with a Waltham Premier open watch with chain and pocket knife.
 Diameters: 1 5/8 inches to 2 1/4 inches
 Estimate: \$150 - \$200



Lot #248: FOUR AMERICAN OPEN FACE POCKET WATCHES
Description: Two by Waltham with engraved gold-filled case or "silveroid" case; one by Elgin and the last by the New England Co. with plated cases.
 Diameters: 1 3/4 inches to 2 1/4 inches
 Estimate: \$75 - \$125



Lot #249: ENGLISH SILVER OPEN FACE POCKET WATCH.
Description: By Kendal & Dent, the case London, 1883: the engine engraved hinged back plate with cartouche, mounted with gilt-metal chain. 2 inch diameter
 Estimate: \$100 - \$150



Lot #250: ELGIN GOLD FILLED GENTLEMAN'S POCKET WATCH
Description: The works by Edward H. Ayres, the case by Premier, engraved with flowers, shells and a cartouche; together with two open face watches by the United States Watch Co. and Supreme, with engraved back plates.
 Diameters: 1 3/4 inches to 2 inches
 Estimate: \$75 - \$100

[To Top](#)



Lots 251 - 260



Lot #251: TWO ELGIN GOLD-FILLED GENTLEMAN'S POCKET WATCHES

Description: One with Dueber case engraved with flowers and a cottage, the other case impressed B II flanking a crown, engraved with a stag and fitted with link chain; together with a Waltham open face watch with floral engraved back.

Diameters: 1 1/2 inches to 2 inches
Estimate: \$75 - \$100



Lot #252: GROUP OF FIVE LADY'S WATCHES

Description: Comprising: a Hamilton 14-carat gold watch with braid strap; an Elgin gold-filled watch with plastic and leather strap; a Gruen watch with braided strap; and two Illinois watches.

Estimate: \$40 - \$60



Lot #253: FOUR AMERICAN OPEN FACE POCKET WATCHES

Description: Two by Elgin and two by Waltham

Estimate: \$75 - \$100



Lot #254: TWO AMERICAN GOLD-FILLED GENTLEMAN'S POCKET WATCHES

Description: One by Elgin in Keystone case with beaded edge and foliate engraving in leatherette box and the other within star and shell engraved case. Diameter of each 1 3/4 inches

Estimate: \$75 - \$125



Lot #255: AMERICAN PAINTED CAST IRON FIGURAL CLOCK.

Description: In the form of an 18th Century officer holding the clock face, the eyes move with the movement, shaped black bordered gilt base. 16 inches high

Estimate: \$150 - \$250



Lot #256: ASHCROFT MFG CO. BRASS SHIP'S CLOCK.

Description: "Retailled by the Wm. Cramp & Sons S. & E. B. Co., Philadelphia: the 7 1/2 inch silvered steel dial within a molded drum case. 9 3/4 inches diameter of case
Estimate: \$300 - \$500



Lot #257: SETH THOMAS VENEERED MAHOGANY WALL CLOCK.

Description: The 11 1/2 inch white enameled dial with S.T. logo within molded surround above glass pendulum door and shaped base. 36 1/2 inches long
Estimate: \$300 - \$400



Lot #258: BIRGE & FULLER MAHOGANY STEEPLE SHELF CLOCK

Description: With open work face aperture within a pointed arch case with pinnacles, the pendulum eglomise door opening to a paper label, on bun feet. 25 1/2 inches high
Estimate: \$150 - \$250



Lot #259: ITHACA CLOCK CO.
ROSEWOOD VENEERED & WALNUT
CALENDAR WALL CLOCK.

Description: With two paper labels on back the paper clock dial above the enameled H.B. Horton's Patents calendar dial, within a break arch case, bracket base. 28 1/4 inches long
Estimate: \$150 - \$250



Lot #260: THREE AMERICAN SHELF
CLOCKS

Description: Comprising: a Seth Thomas rosewood veneered clock with flat top eglomise door and flared base; and F. Kroeder "Angel Swing" eight day walnut clock with architectural pediment and paper label on reverse; and a Seth Thomas clock in architectural case applied with gilt-metal capitals and bases. Heights: 13 5/8 inches, 17 5/8 inches, and 11 3/8 inches

Estimate: \$200 - \$300

To Top



Lots 261 - 270



Lot #261: INGRAHAM OAK WALL REGULATOR

Description: With label of "the E. Ingraham Co...." on reverse; the silver-painted dial within an octagonal surround with egg-and-dart and bead-and-reel moldings, above a glass pendulum door; together with another oak wall regulator. Lengths: 32 inches and 24 1/2 inches Estimate: \$200 - \$400



Lot #262: TWO AMERICAN ROSEWOOD VENEERED EIGHT DAY SHELF CLOCKS.

Description: The one by Ansonia with painted tin dial, pin wheel decorated glass door and pitched pediment, the second, Ingraham, with paper applied label, double circle glass door with gilt strawberry panel within case with applied pilasters and shaped crest. Heights: 18 1/4 inches and 15 1/2 inches Estimate: \$200 - \$300



Lot #263: GROUP OF THREE NOVELTY CLOCKS

Description: Comprising: a German calendar clock with two tiers of rotating numbers in cylindrical glass and brass plated case; a German brass-plated bird in cage clock with music mechanism; and a pendulum clock with silvered dial, open works and wood base, with glass dome. Heights: 5 inches to 8 1/4 inches Estimate: \$100 - \$200



Lot #264: THREE RENAISSANCE REVIVAL OAK OR WALNUT SHELF CLOCKS.

Description: All with paper labels and shaped cases, the doors variously with a steamship, Moorish arch and sun flower. Heights: 21 1/2 inches, 21 3/4 inches and 24 inches Estimate: \$250 - \$350



Lot #265: TWO AMERICAN VENEERED SHELF CLOCKS

Description: Comprising a rosewood piece with enameled tin dial enclosed by glass door with floral panel; and a Forestville Clock Company mahogany clock with enameled tin dial above paper label, the glass door with cherry panel. Heights: 11 3/4 inches and 25 7/8 inches Estimate: \$150 - \$250



Lot #266: SETH THOMAS GRAINED AND VENEERED ROSEWOOD EIGHT DAY SHELF CLOCK.

Description: With interior paper label: the painted tin dial enclosed by a door with eglomise panel of an eagle, above a parrot decorated glass door, the flat top case applied with 1/2 round faux tortoise and parcel gilt pilasters.
32 1/2 inches high x 18 3/4 inches wide
Estimate: \$200 - \$300



Lot #267: AMERICAN MAHOGANY VENEERED STEEPLE SHELF CLOCKS

Description: One with interior label of Elisha Monross with painted tin dial, the other with label of New Haven Clock Co. with applied paper dial, each with pitched crest and turned finials above glass door with a balloon scene.
Height of each 19 3/4 inches
Estimate: \$100 - \$200



Lot #268: NEW HAVEN CLOCK CO. RENAISSANCE REVIVAL OAK SHELF CLOCK.

Description: With torn paper label on back: the enameled tin dial with glass door showing a view of Niagara Falls: the break arch case applied with gilt female mask head and mirror backed cherubs.
24 inches high x 16 inches wide
Estimate: \$100 - \$200



Lot #269: THREE AMERICAN SHELF CLOCKS.

Description: Comprising an Ansonia clock with cast pot metal figures supporting the seven inch paper applied gilt metal dial glass dome lacking, Renaissance Revival walnut clock with enameled dial, decorated glass door and arched case with foliate crest, and a Renaissance-style incised oak clock with applied paper chapter ring.
Heights: 17 inches, 23 inches and 24 1/4 inches

inches
Estimate: \$300 - \$400



Lot #270: SETH THOMAS WALNUT
VIOLIN FORM SHELF CLOCK.

Description: The paper dial with
manufacturers name within foliate carved
case with glass door decorated with
music trophies. 31 inches high
Estimate: \$200 - \$400

[To Top](#)



Lots 271 - 280



Lot #271: AMERICAN ROSEWOOD
GRAINED WALL REGULATOR

Description: With green paper label
"Bristol" on reverse, the 11 1/4 inch
paper dial face with day-of-the month
indicator, in a molded case, above a
pendulum window. 30 1/2 inches tall
Estimate: \$200 - \$300



Lot #272: HOWARD & DAVIS GRAINED ROSEWOOD VENEERED BANJO CLOCK.
Description: The paper mounted tin dial in drum case above eglomise paneled trunk and base, repainted. 32 inches tall
Estimate: \$200 - \$400



Lot #273: CONTINENTAL WALNUT & VENEERED ROSEWOOD SMALL LONGCASE CLOCK.

Description: The 9 1/2 inch painted wood dial surmounted by a bell and two knight form ringers, the swan's neck hood on free standing spiral twist supports, plain trunk door, paneled base and bracket feet. 5 feet 11 and 3/4 inches high
Estimate: \$300 - \$500



Lot #274: AMERICAN ART NOUVEAU PATINATED METAL TABLE LAMP WITH INTERIOR PAINTED GLASS SHADE

Description: The base marked "Rainand", the shade with a continuous landscape scene, the stop-fluted base continuing into a dome base. 22 1/4 inches high x 16 inches wide
Estimate: \$100 - \$150



Lot #275: NEAR EASTERN BRASS TABLE LAMP

Description: The spherical bowl pierced with calligraphic rondels, the dome shade with amber glass bead pendants and with crescent and star finial. 26 inches high, 14 1/4 inches diameter
Estimate: \$100 - \$200



Lot #276: GOTHICK-STYLE GILT-METAL TWELVE-LIGHT CANDELABRUM

Description: The central pole with helmet finial and two graduated rings pierced with vinework, on triangular base and lion's paw feet, with glass beaded shades.
40 inches high x 15 3/4 inches diameter
Estimate: \$300 - \$500



Lot #277: PAIR OF RENAISSANCE STYLE PATINATED METAL FLOOR LAMPS

Description: Each segmented stem with coiled snakes supporting a pierced lantern; together with an Art Moderne brass and wood floor lamp with bell-form shade.
heights: 6 feet 1 inch and 5 feet 5 1/2 inches
Estimate: \$300 - \$400



**Lot #278: PAIR OF AMERICAN
STENCILED BLACK-GROUND TOLE WALL
OIL LAMPS**

Description: One with plaque,
"Manufactured by W. Carleton, Boston",
each back plate with removable oil holder
and supporting the light arm with brass
shade holder; glass shades.

9 3/4 inches high x 5 1/2 inches deep
From the Estate of Frederick W. Hughes
Estimate: \$1200 - \$1400



**Lot #279: PAIR OF AMERICAN GILT-
METAL MOUNTED BRONZE AND TOLE OIL
LAMPS**

Description: 19th c., each column-form
stem applied with a putto holding grape
leaves, foliate repousse spherical oil
holder, square base.

Height to well 12 3/4 inches
From the Estate of Frederick W. Hughes
Estimate: \$400 - \$500



**Lot #280: PAIR OF CHARLES X BRONZE
AND GILT-BRONZE THREE-LIGHT
APPLIQUES**

Description: Each lion head back plate
supporting three arrow-form arms with
feathered terminals and suggesting small
orbs from which rise the flower-cast
nozzles

5 inches high x 15 inches wide x 18
inches deep
From the Estate of Frederick W. Hughes
Estimate: \$2000 - \$3000

To Top



Lots 281 - 290



**Lot #281: PAIR OF GILT METAL WALL
LIGHTS**

Description: After a design by

supporting the s-form candle arms.
8 1/4 inches high x 8 1/2 inches long
From The Estate of Frederick W. Hughes
Estimate: \$200 - \$400



**Lot #282: PAIR OF VICTORIAN
"DECALOMANIA" REVERSE-PAINTED
GLASS VASES, NOW MOUNTED AS
LAMPS**

Description: The balister shaped urns
decorated with pale blue ground and
floral decoupage.
11 inches high x 9 inches wide
Estimate: \$700 - \$900



**Lot #283: PAIR OF CHARLES X STYLE
BRASS THREE-LIGHT WALL APPLIQUES**

Description: Each backplate supporting
the leaf cast s-form arms with circular
drip pans and circular nozzles
7 3/4 inches high x 9 3/4 inches x 6
inches
Estimate: \$150 - \$200



**Lot #284: LOUIS XV-SYTL E GILT METAL
& CUT GLASS CHANDELIER**

Description: The rococo form hung
with cut glass and with 12 candelabra
now fitted for electricity. 40 inches high x
29 inches wide
Estimate: \$1500 - \$2000



**Lot #285: PAIR OF EBONIZED AND GILT
DECORATED SIDE CHAIRS**

Description: The sloped cresting above
a group of turned supports, the whole
raised on turned legs below a caned seat.
Estimate: \$300 - \$500



Lot #286: EDWARDIAN SIDE CHAIR

Description: A shaped cresting above a lacquer panel with rattan seat and back raised on bamboo legs
Estimate: \$200 - \$400



Lot #287: PAIR OF EARLY REGENCY FOUR LIGHT CUT GLASS AND PORCELAIN CANDELABRA

Description: Each angular baluster base with floral reserve on blue ground supported by a central prism and four thumb press s-form drop hung arms. 32 inches high
Estimate: \$3000 - \$5000



Lot #288: LOUIS XV-XVI TRANSITIONAL STYLE GILT-METAL MOUNTED MAHOGANY BIBLIOTHEQUE

Description: The three-quarter mottled marble top above two frieze drawers and adjustable shelves, raised on short legs with scrollwork sabot.
40 1/4 inches high x 29 1/4 inches wide x 10 inches deep
Estimate: \$500 - \$700



Lot #289: GEORGE III STYLE YEWOOD BOOKCASE

Description: With dentil cornice, open adjustable shelves and a plinth 7 feet x 37 inches x 13 3/4 inches
Estimate: \$150 - \$250



Lot #290: ENGLISH OAK BLANKET CHEST

Description: The rectangular hinged top above fielded panels at the front and sides, the base containing two drawers with brass drop handles, raised on stiles. 31 3/8 inches high x 4 feet 7 1/2 inches wide x 20 inches deep
Estimate: \$800 - \$1200

To Top



Lots 291 - 300



Lot #291: BAROQUE STYLE TILE-MOUNTED PAINTED CABINET

Description: The narrow frieze with pink flower head tile band above a pair of glass doors, the lower part with two doors above a base drawer flanked by tiles. 4 feet 5 1/2 inches high x 29 inches wide x 11 1/2 inches deep
Estimate: \$700 - \$900



Lot #292: PAIR OF GEORGE III STYLE TORCHERES

Description: Each with a square top, the stem on tripod angular legs height 37 inches x 9 inches wide
Estimate: \$300 - \$500



Lot #293: A LARGE OAK BOOKCASE

Description: The upper section with clear and colored glass leaded panels above a base fitted with two paneled doors.
87 inches high x 66 inches wide x 20 inches deep
Estimate: \$400 - \$600



Lot #294: AN EDWARDIAN KNEEHOLE DESK.

Description: The serpentine top above a frieze fitted with five drawers raised on carved and turned legs. 29 inches high x 49 1/2 inches wide x 19 inches deep
Estimate: \$300 - \$500



Lot #295: VICTORIAN BURL YEOW WOOD
& SYCAMORE FALL-FRONT DESK

Description: The rectangular case fitted with five graduating drawers incorporating a hidden secretaire drawer fitted with brass handles raised on bracket feet
47 inches high x 28 inches wide x 16 inches deep
Estimate: \$1800 - \$2200



Lot #296: ITALIAN ROCOCO CARVED & PAINTED WOOD TWO-DRAWER
COMMODE

Description: The molded serpentine top above a case fitted with two drawers, fitted with ormolu handles and sabots
32 inches high x 37 inches wide x 19 inches deep
Estimate: \$2000 - \$4000



Lot #296A: LOUIS XV PROVINCIAL
BEECHWOOD FAUTEUIL DE BUREAU

Description: Carved and shaped cresting rail above a leather upholstered back and seat joined together by out-scrrolled arms raised on four cabriole legs
Estimate: \$1000 - \$1500



Lot #297: GEORGE II STYLE JAPANNED
KNEEHOLE DESK

Description: The shaped top decorated all over with Japanned figures above a carcass fitted with a long frieze drawer and three drawers at either side raised on shaped bracket feet
31 inches high x 28 inches wide x 44 inches deep
Estimate: \$2000 - \$3000



Lot #298: GEORGE III MAHOGANY
CHEST-OF-DRAWERS

Description: The rectangular case fitted with two short and three long drawers raised on bracket feet.

41 inches high x 40 inches wide x 19 inches deep

Estimate: \$2000 - \$3000



Lot #299: GROUP OF EIGHT JAPANESE
PAINTED POTTERY FIGURES OF MICKEY
MOUSE, WITH SWING ARMS.

Description: Each with red shorts standing on yellow base. Heights 7 1/2 inches

From the Estate of Frederick W. Hughes

Estimate: \$400 - \$600



Lot #300: TWO CLOTH-BOUND FIGURES
OF MICKEY MOUSE AND MINNIE MOUSE

Description: He with buttoned green shorts, she with pink bloomers.

Length of figures approx. 19 inches

From the Estate of Frederick W. Hughes

Estimate: \$100 - \$150

To Top

